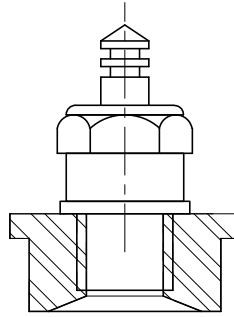
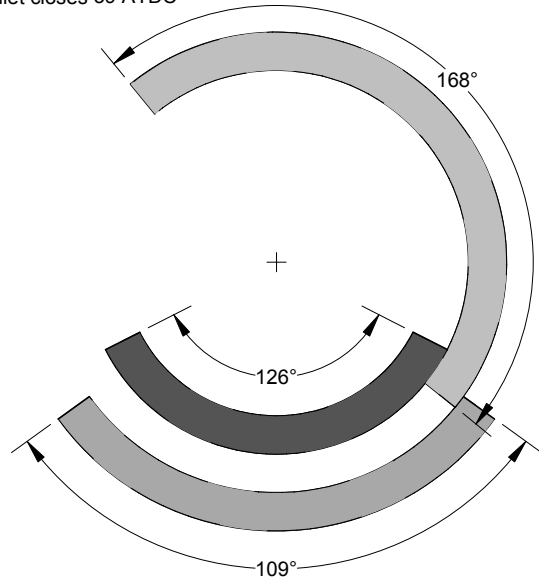
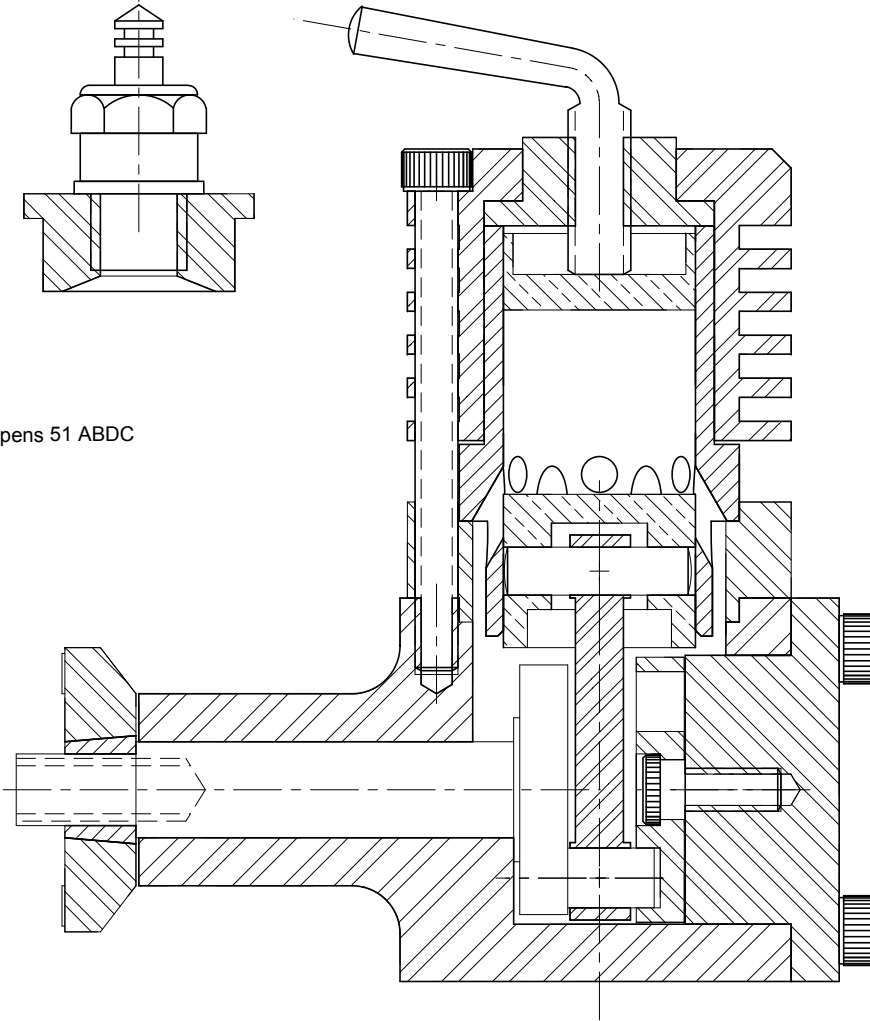


Inlet closes 39 ATDC



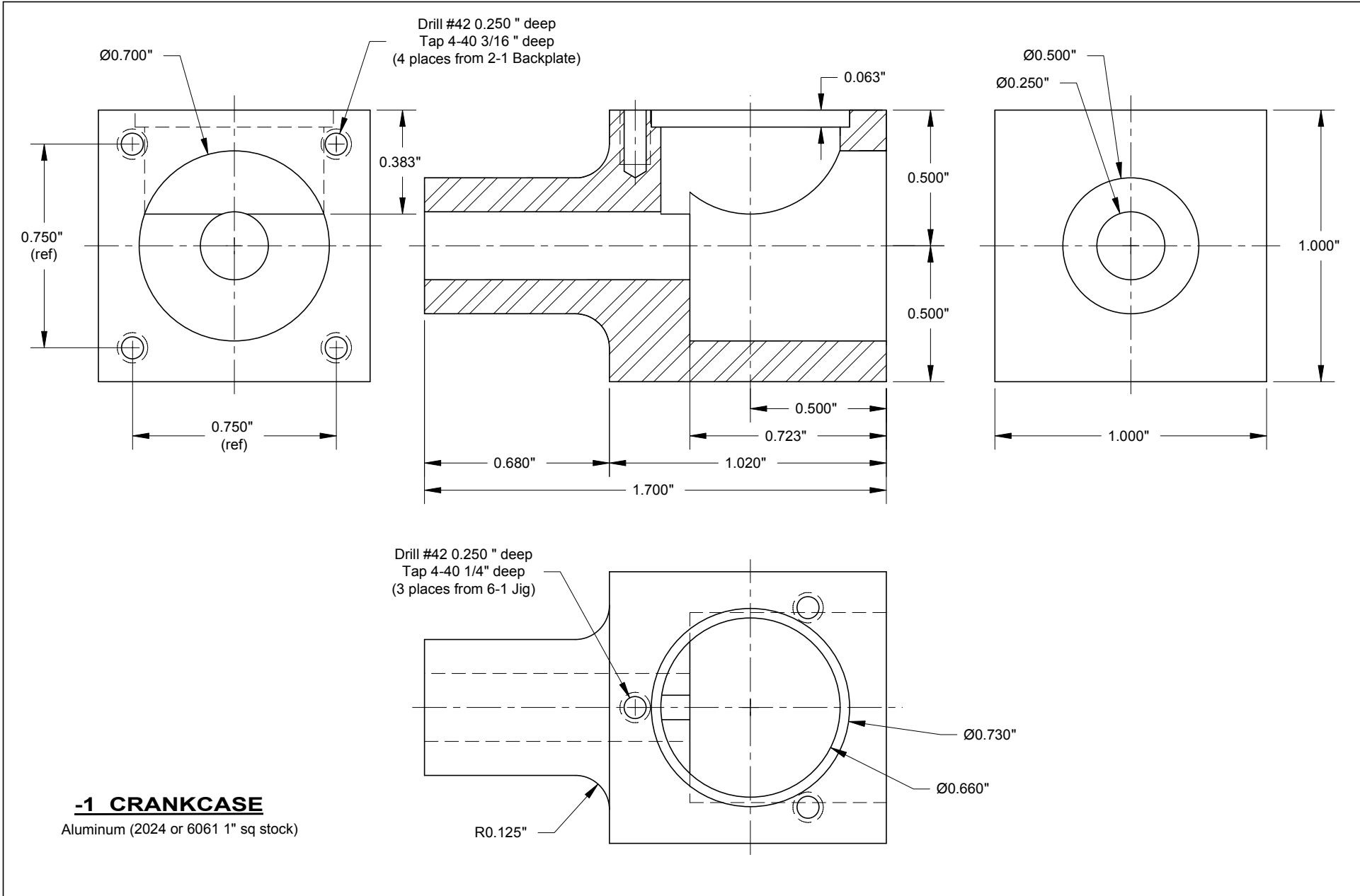
Inlet opens 51 ABDC


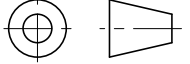


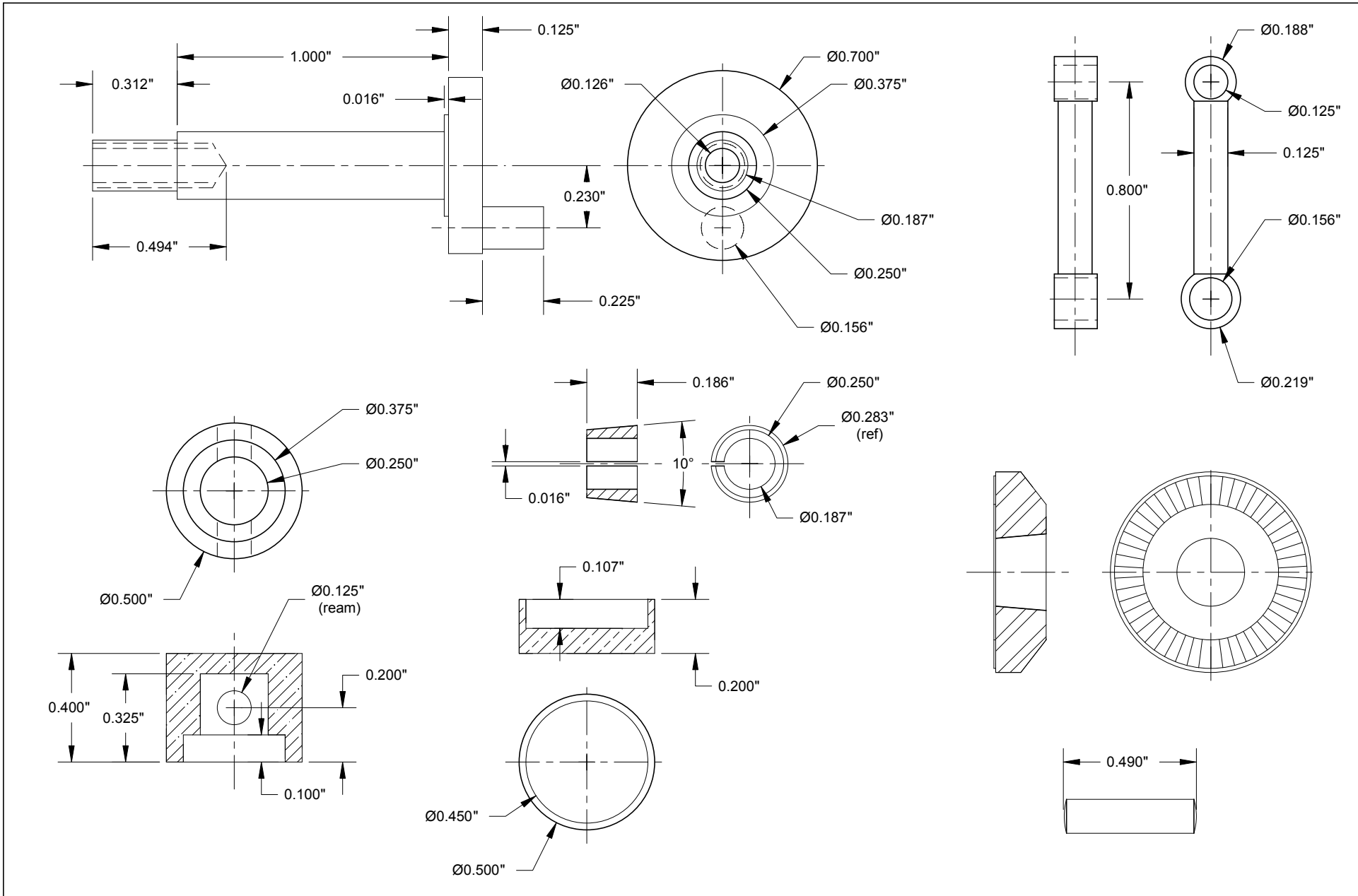
BAR-STOCK 1


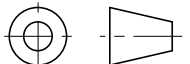
Bore: 0.500" (12,7mm)
 Stroke: 0.460" (11,68mm)
 Capacity: 0.090 cu in (1,48 cc)

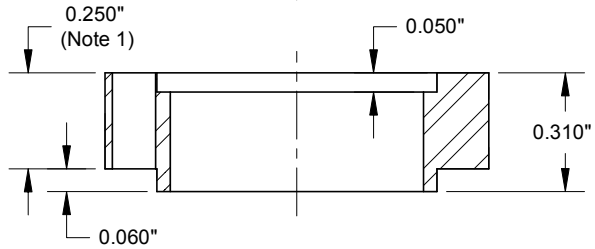
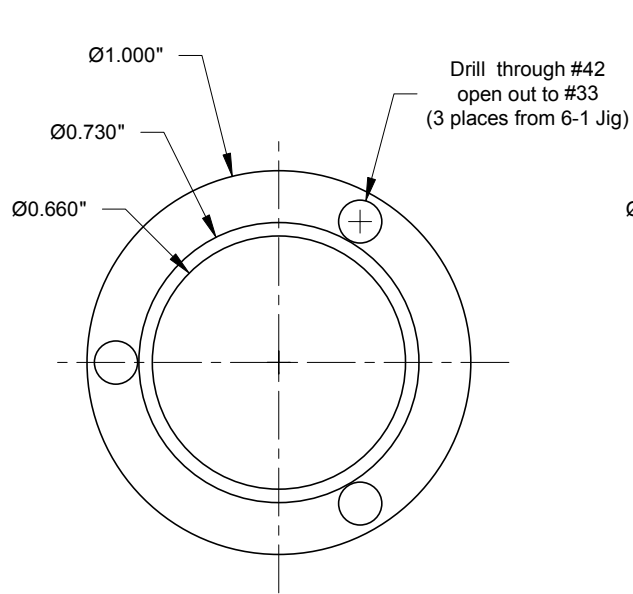
			MAT'L	As Noted	DO NOT SCALE DRAWING WORK TO DIMENSIONS ALL DIMENSIONS ARE IN INCHES	MOTOR BOYS (INTERNATIONAL)	NAME	RC BS-1
			SCALE	2 X SIZE			NUMBER	Sheet 9 - General Arrangement
DATE	CHANGE	BY	DRAWN	RC 2004-10-09				
			CAD	RC 2004-10-09				



			MAT'L	As Noted	DO NOT SCALE DRAWING WORK TO DIMENSIONS ALL DIMENSIONS ARE IN INCHES	 MOTOR BOYS (INTERNATIONAL)	NAME	RC BS-1
			SCALE	2 X SIZE			NUMBER	Sheet 1 - Crankcase
DATE	CHANGE	BY	DRAWN	RC 2004-10-09				
			CAD	RC 2004-10-09				

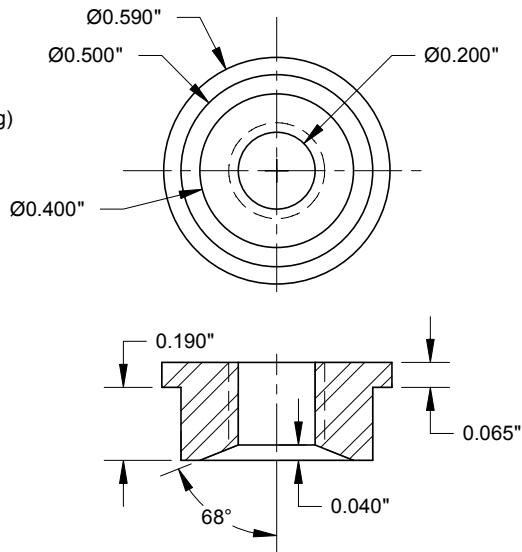


			MAT'L	As Noted	DO NOT SCALE DRAWING WORK TO DIMENSIONS ALL DIMENSIONS ARE IN INCHES	 MOTOR BOYS (INTERNATIONAL)	NAME	RC BS-1
			SCALE	2 X SIZE			NUMBER	Sheet 2 - Cranshaft and Piston
DATE	CHANGE	BY	DRAWN	RC 2004-10-09				
			CAD	RC 2004-10-09				



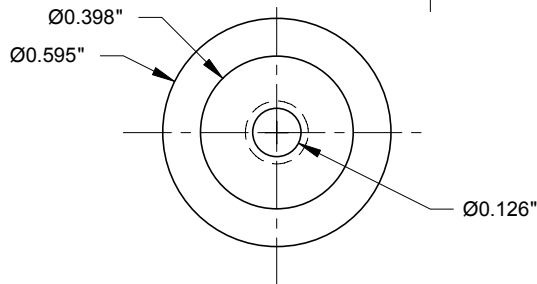
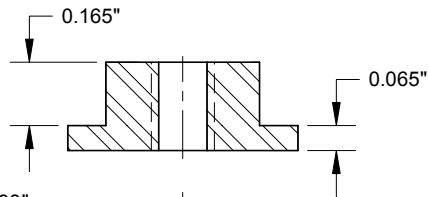
-1 CYLINDER BASE

Aluminum (2024 or 6061)



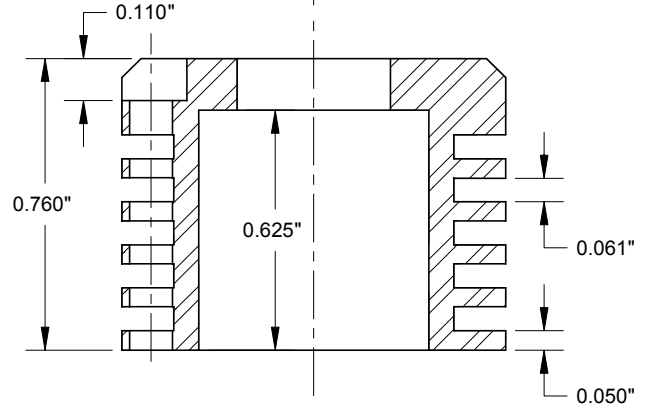
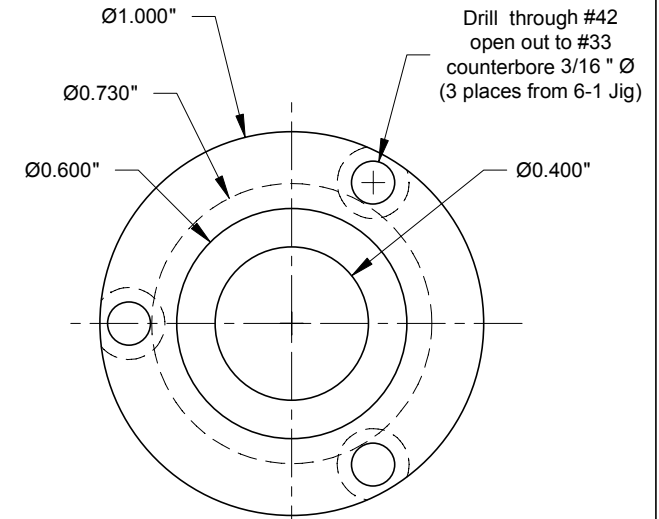
-3G GLOWPLUG BUTTON

Aluminum (2024 or 6061)



-3D DIESEL BUTTON


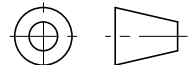
Aluminum (2024 or 6061)



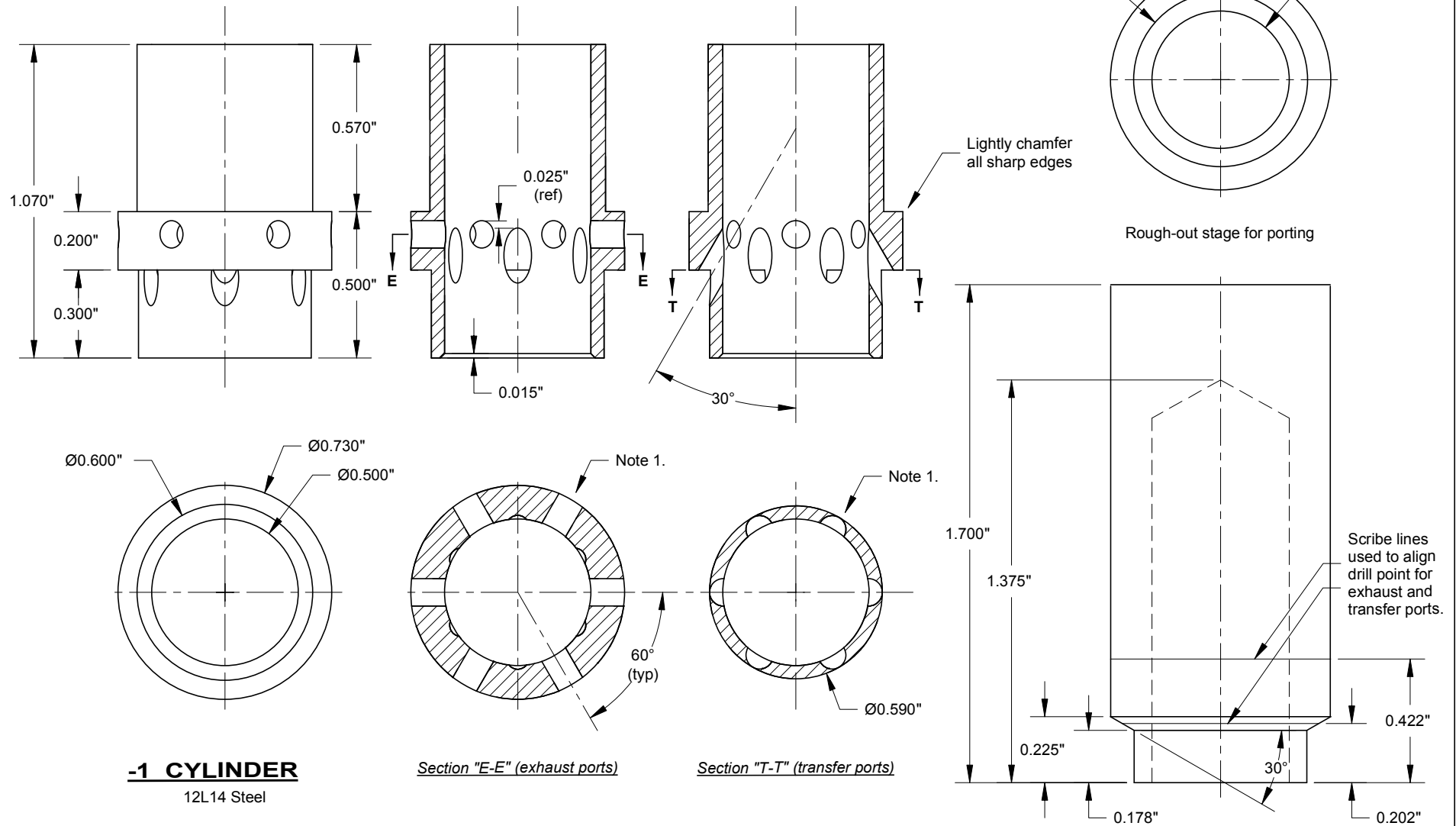
-2 CYLINDER HEAD

Aluminum (2024 or 6061)

Notes: 1. If necessary, adjust this dimension so that the distance from the crankshaft axis to the recessed cylinder seating face is 0.700".

			MAT'L	As Noted	DO NOT SCALE DRAWING WORK TO DIMENSIONS ALL DIMENSIONS ARE IN INCHES	 MOTOR BOYS (INTERNATIONAL)	NAME	RC BS-1
			SCALE	2 X SIZE			NUMBER	Sheet 3 - Cylinder Head
DATE	CHANGE	BY	DRAWN	RC 2007-01-06				
			CAD	RC 2007-01-06				

Notes: 1. All ports:
Center drill with #1 center drill.
Drill through 5/64" Ø,
then 3/32" Ø.

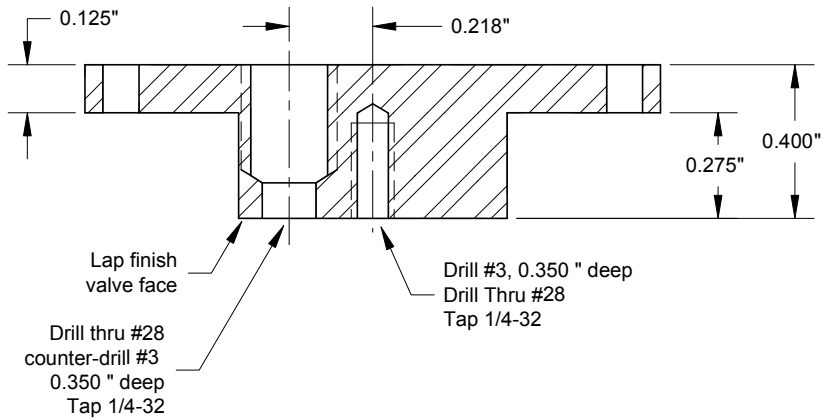
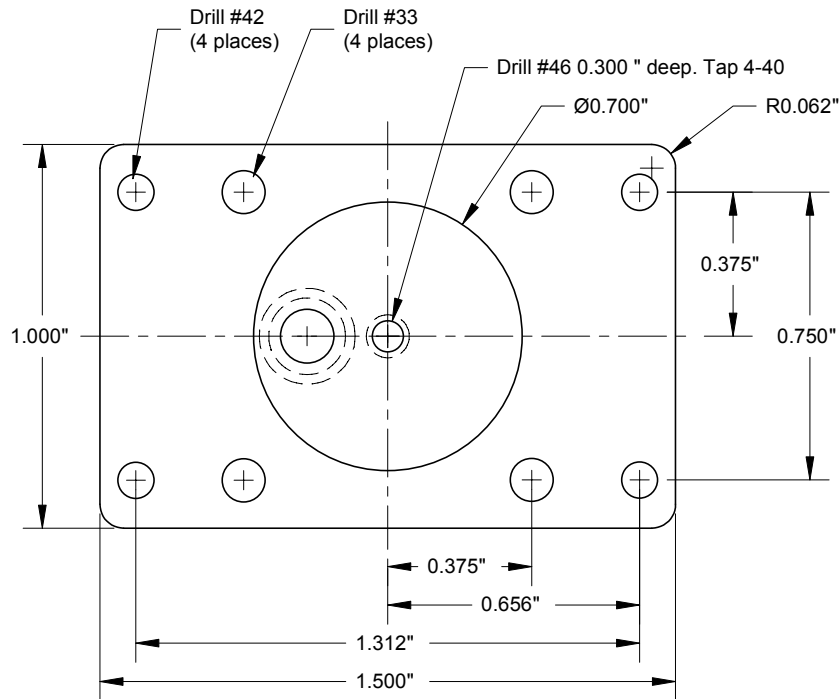


-1 CYLINDER
12L14 Steel

Section "E-E" (exhaust ports)

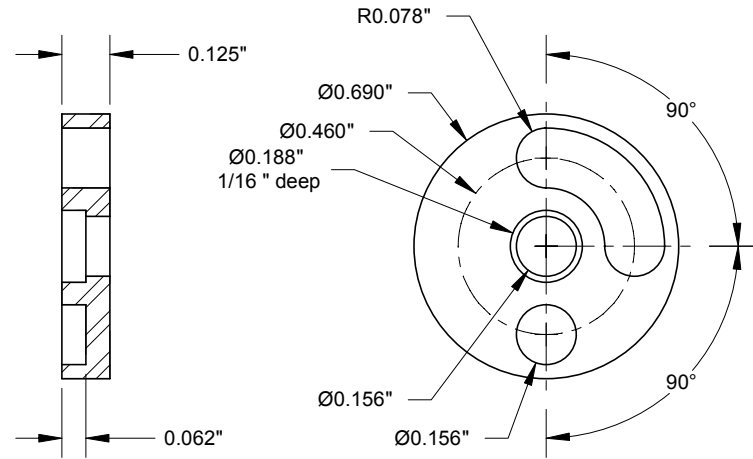
Section "T-T" (transfer ports)

			MAT'L	As Noted	DO NOT SCALE DRAWING WORK TO DIMENSIONS ALL DIMENSIONS ARE IN INCHES	MOTOR BOYS (INTERNATIONAL)	NAME	RC BS-1
			SCALE	2 X SIZE			NUMBER	Sheet 4 - Cylinder
DATE	CHANGE	BY	DRAWN	RC 2007-01-10				
			CAD	RC 2007-01-10				



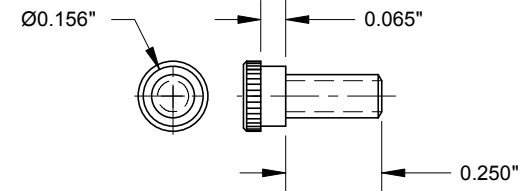
-1 BACKPLATE

Aluminum (2024 or 6061 1" sq stock)




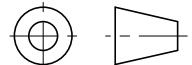
-2 ROTARY VALVE

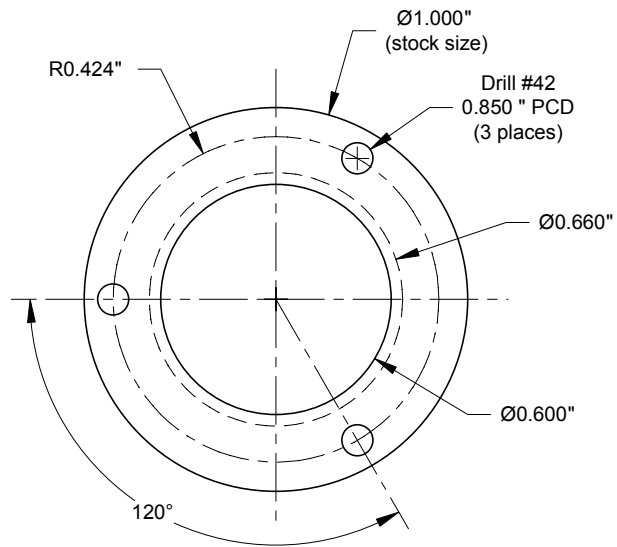
Aluminum (2024 or 6061 1" sq stock)



-3 VALVE PIN

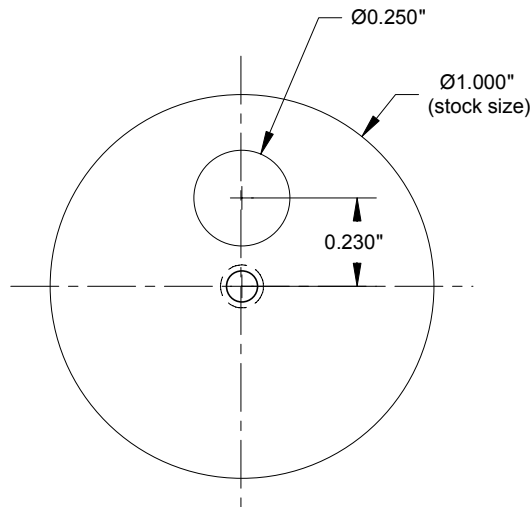
4-140 x 1/4" Cap Head Screw

			MAT'L	As Noted	DO NOT SCALE DRAWING WORK TO DIMENSIONS ALL DIMENSIONS ARE IN INCHES	 MOTOR BOYS (INTERNATIONAL)	NAME
			SCALE	2 X SIZE			RC BS-1
			DRAWN	RC 2004-10-09			NUMBER
DATE	CHANGE	BY	CAD	RC 2004-10-09		Sheet 5 - INLET VALVE	



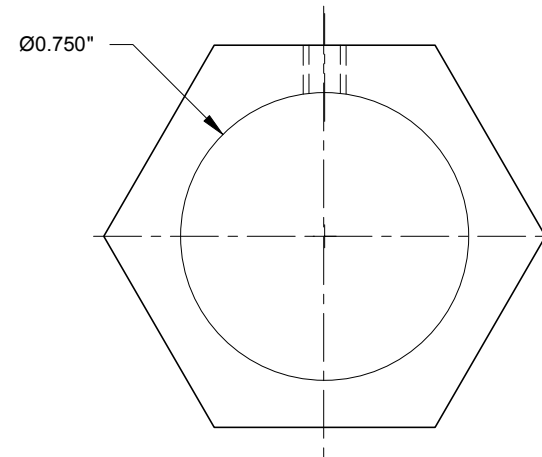
-1 HEAD DRILLING JIG

Steel



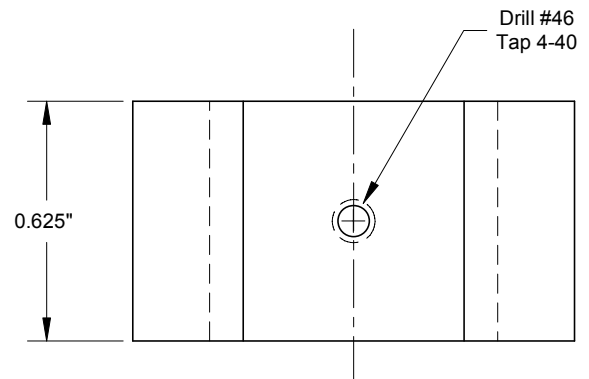
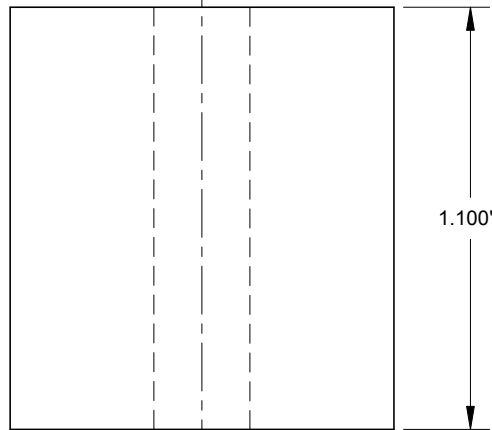
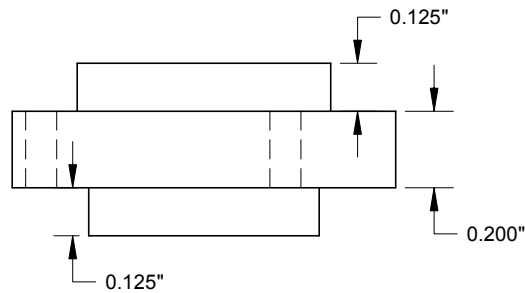
-3 CRANPIN AND VALVE JIG


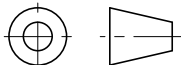
Steel



-2 CYLINDER PORTING INDEX JIG

1" AF Hex Steel



			MAT'L	As Noted	DO NOT SCALE DRAWING WORK TO DIMENSIONS ALL DIMENSIONS ARE IN INCHES	 MOTOR BOYS (INTERNATIONAL)	NAME	RC BS-1
			SCALE	2 X SIZE			NUMBER	Sheet 6 - Jigs
DATE	CHANGE	BY	DRAWN	RC 2007-01-10				
			CAD	RC 2007-01-10				