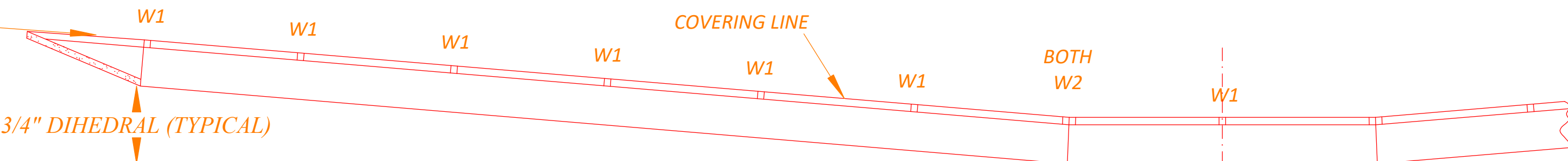


- ALL RIBS 1/16" Balsa Sheet
- W1 - MAKE 25
- W4 - MAKE 1
- W2 - MAKE 6
- W3 - MAKE 2

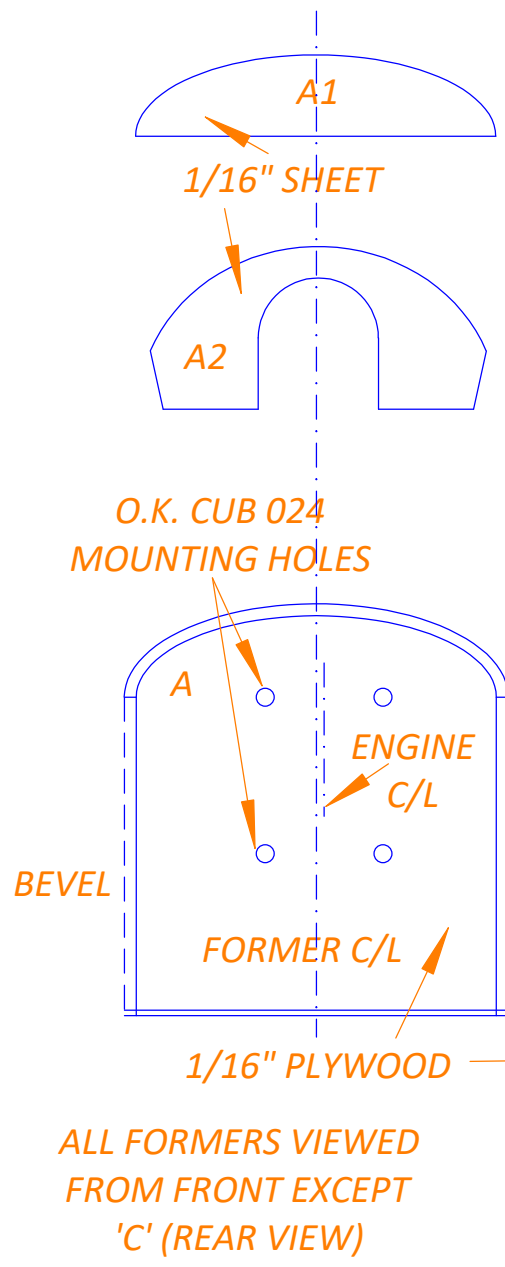
SCRAP FILL-IN CUT TO FIT (BOTH WINGS)



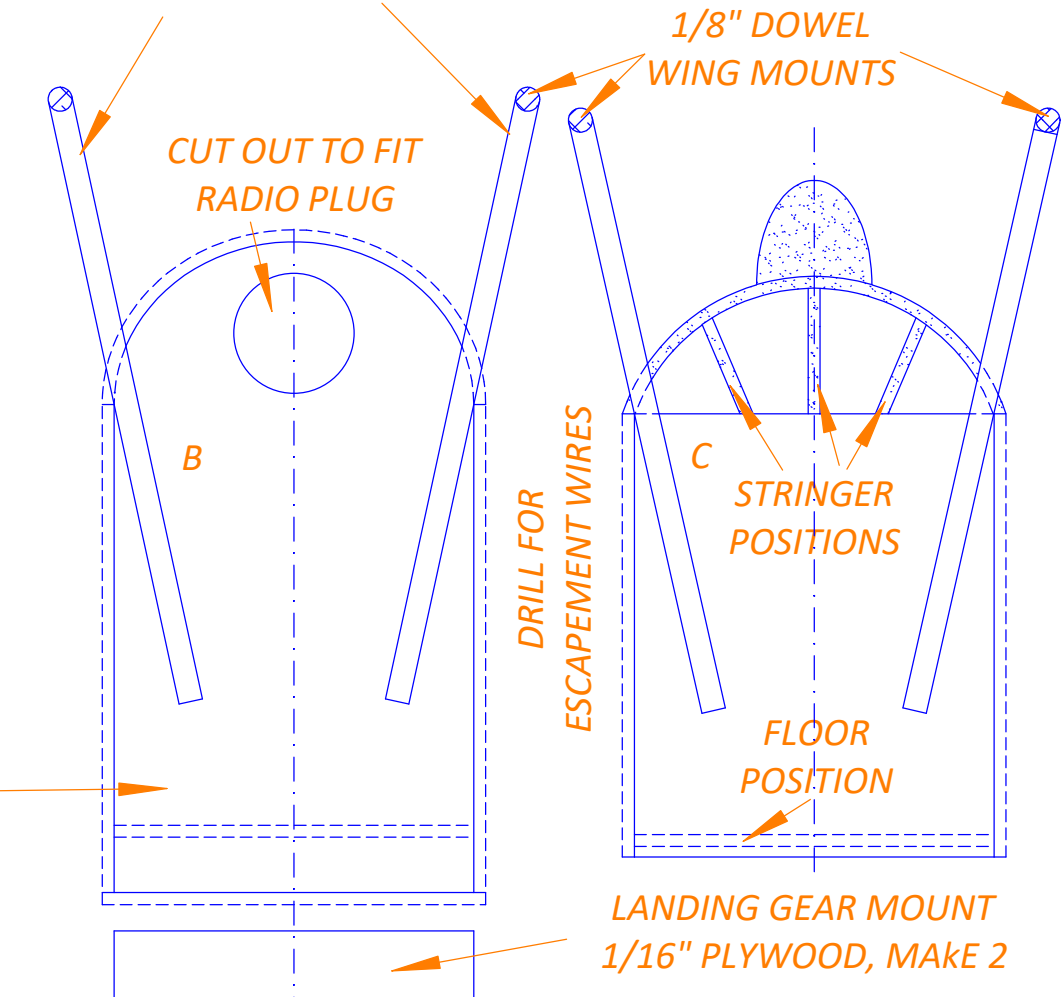
### WING CONSTRUCTION

MAKE 4 PANELS (2 RIGHT HAND & 2 LEFT). LEFT HAND PANEL SHOWN IN SOLID LINE, RIGHT HAND PANEL IS DOTTED. BUILD ON TRUE FLAT SURFACE. MAKE 2 CENTRE SECTIONS (WITH DIHEDRAL BARCES INTEGRAL). ATTACH WING PANELS TO CENTRE SECTIONS. COVER CENTRE 3" OF LOWER WING WITH 1/16" SHEET (TOP SURFACE ONLY).

- LEADING EDGE DIHEDRAL BRACE - MAKE 4 OFF 1/16" PLYWOOD
- TRAILING EDGE DIHEDRAL BRACE - MAKE 4 OFF 1/16" PLYWOOD

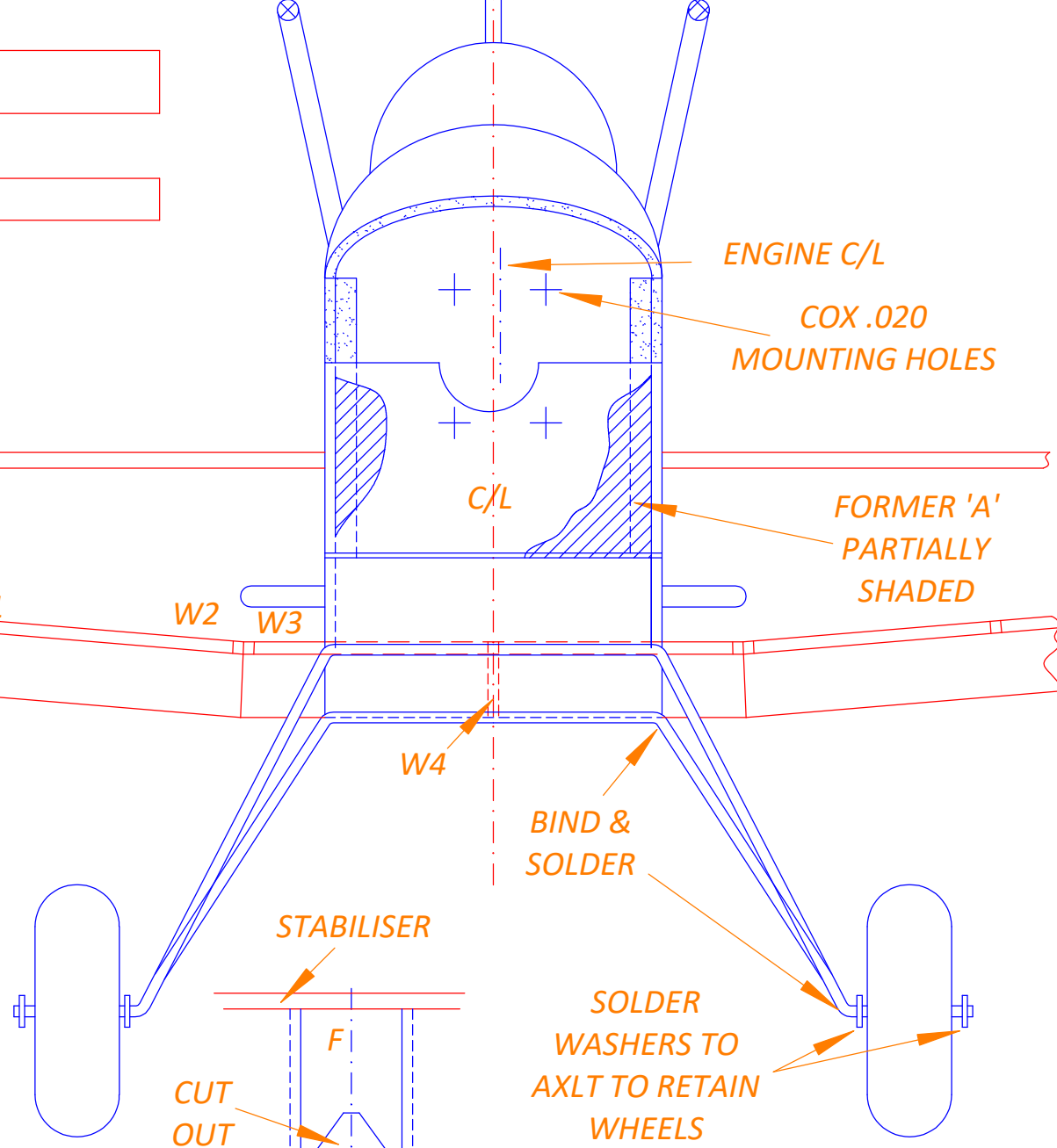
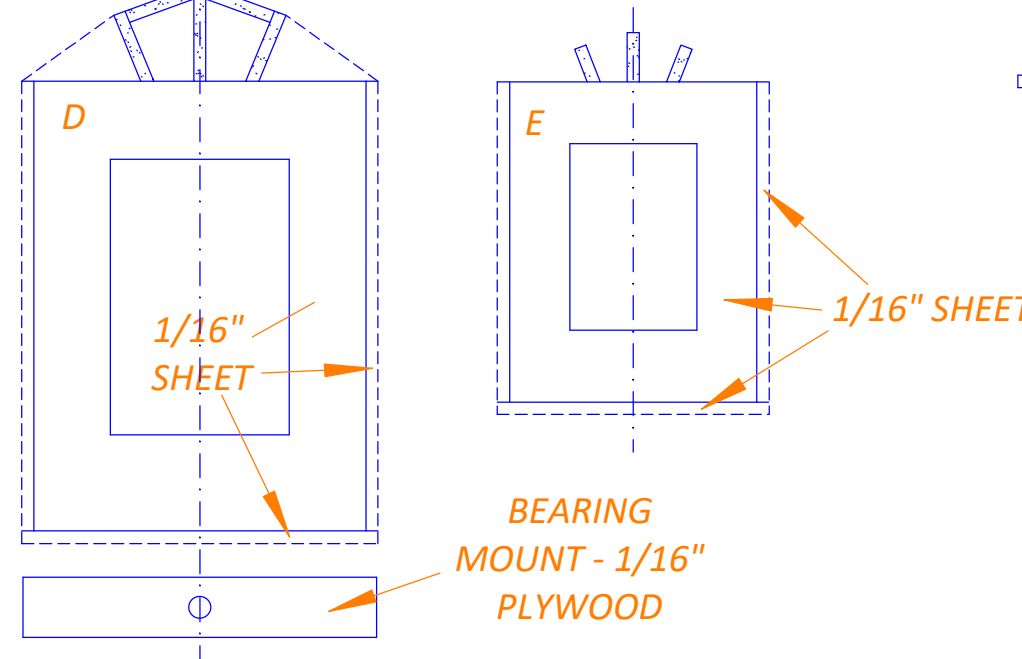


CABANE STRUTS - 1/8" X 3/8" BASS (TRUE LENGTH GIVEN, CUT OUT ACCURATELY)



### LANDING GEAR

USE FRONT STRUT AS PATTERN FOR BOTH STRUTS. BEND FRONT STRUT AS SHOWN, REAR STRUT SIMILAR BUT CUT SHORT AT 'X' POINTS

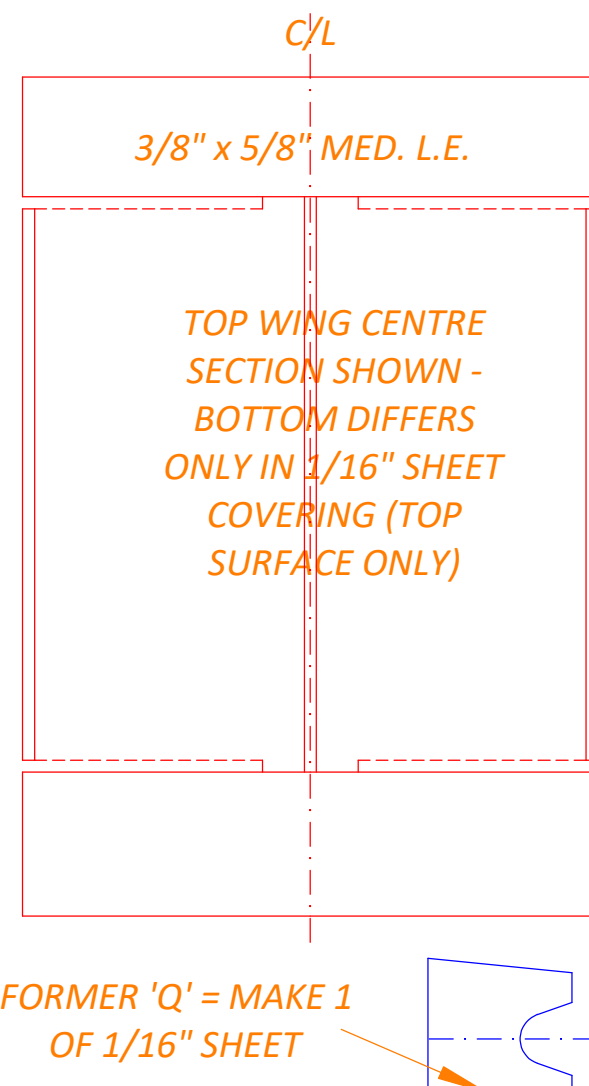
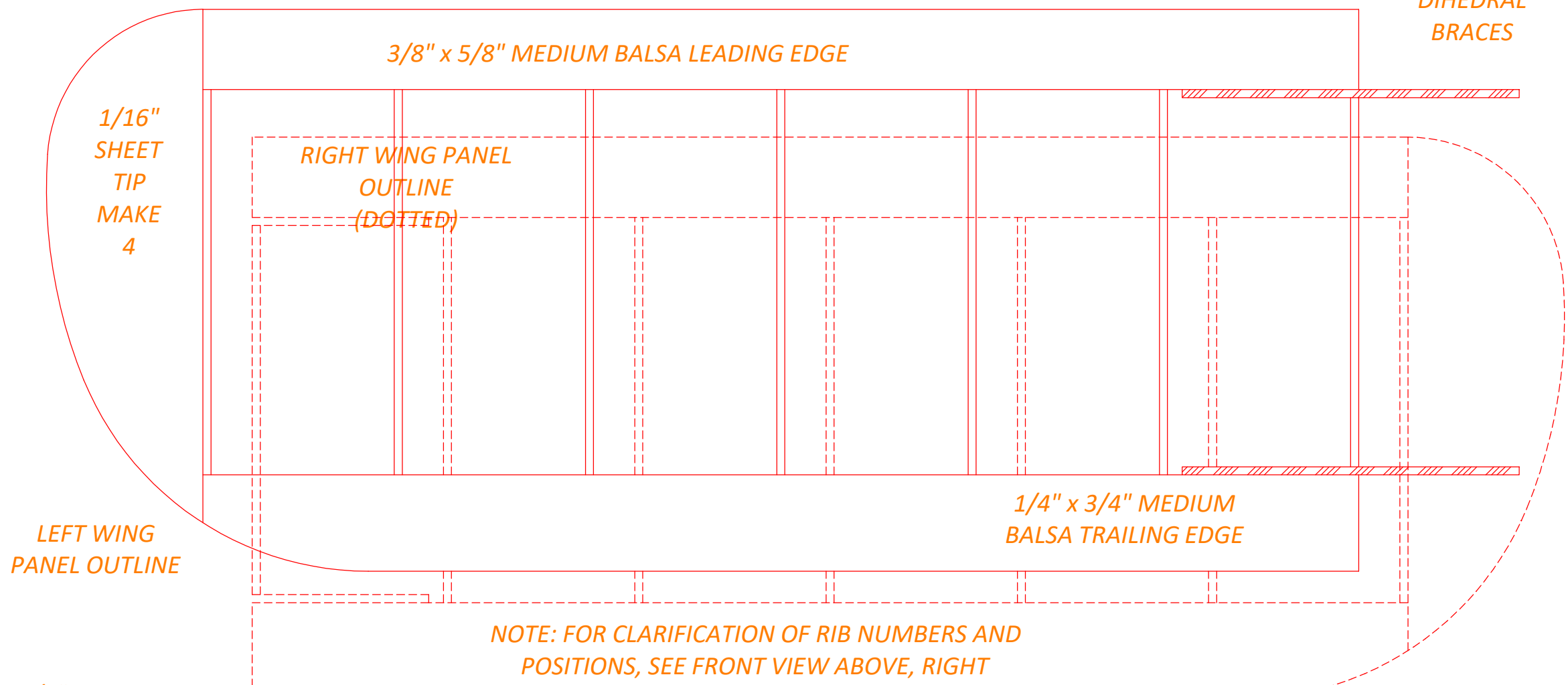


### SPECIFICATIONS

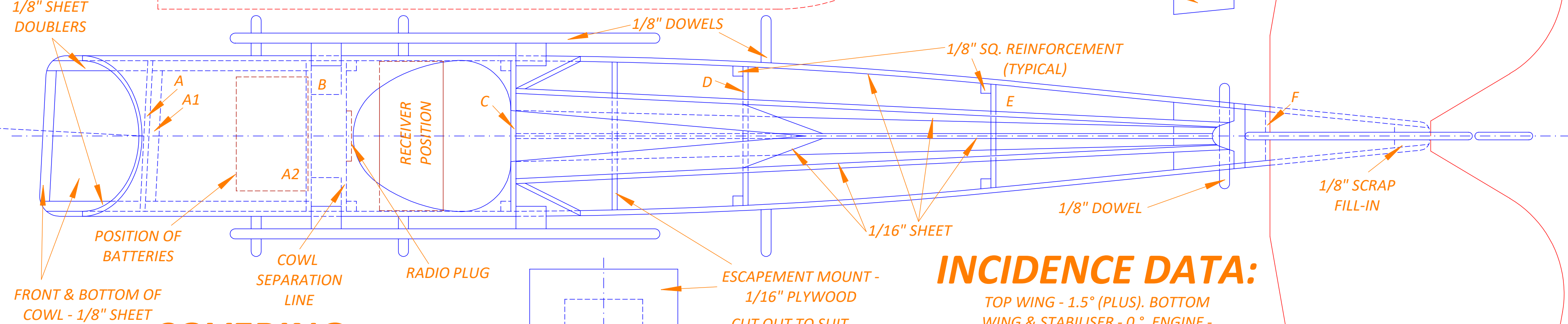
WING SPAN ----- 23-1/4" (TOP & BOTTOM)  
 LENGTH OVERALL ----- 18-7/8"  
 WING AREA (TOTAL) ----- 188 SQ. INS.  
 TOTAL WEIGHT ----- 9 TO 12 OUNCES

### FLYING:

ADJUST FOR FAST STRAIGHT GLIDE. USE 'TOP-FLITE 5-1/4"D, 3" P. NYLON PROP ON EITHER ENGINE. DIFFERENCES IN RADIOS AND BATTERY PACKS WILL ALTER FLYING CHARACTERISTICS, SO TRIM ACCORDINGLY



USE MEDIUM STRAIGHT-GRAINED Balsa FOR STABILISER. CHOOSE FLAT STOCK. ROUND OF ALL EDGES.



### COVERING:

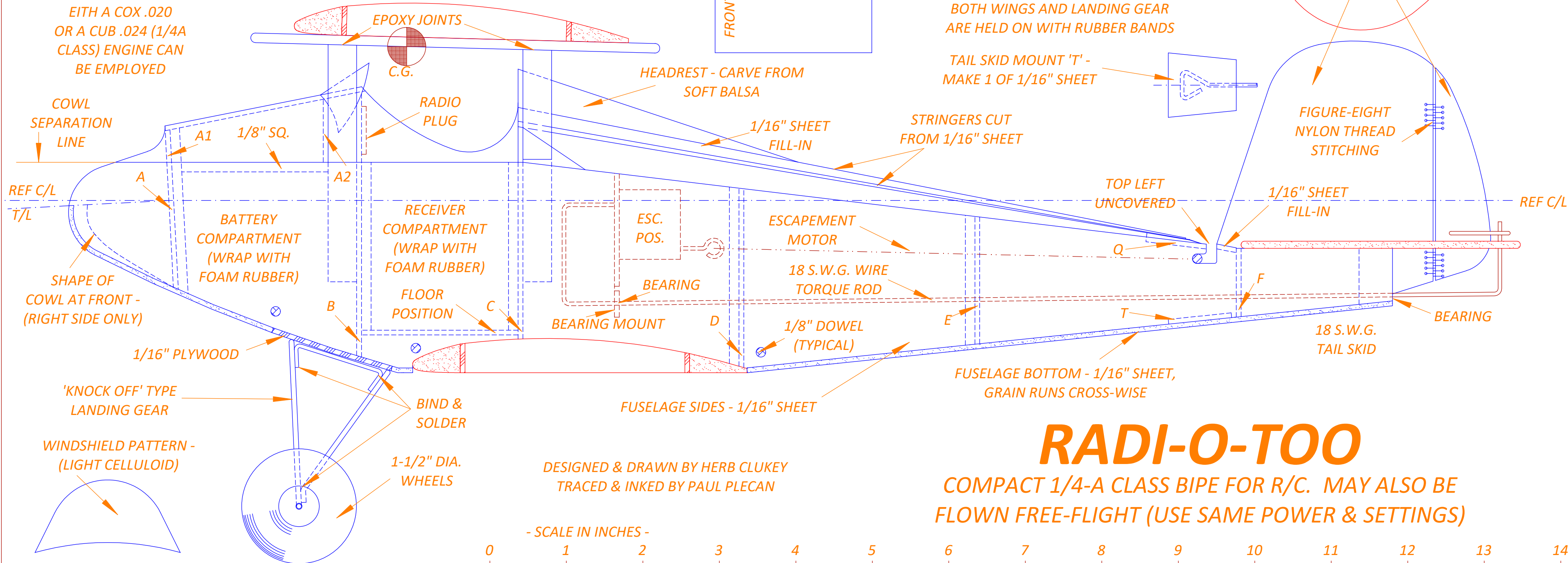
ENTIRE MODEL IS COVERED WITH SILK OF DESIRED COLOUR(S). MINIMUM OF 4 COATS CLEAR DOPE (COLOURED DOPE TO BE USED SPARINGLY, TO KEEP WEIGHT AT A MINIMUM

### INCIDENCE DATA:

TOP WING - 1.5° (PLUS). BOTTOM WING & STABILISER - 0°. ENGINE - 3° DOWN, 3° RIGHT. INCIDENCES & ENGINE OFFSETS ARE HAD WITH CLOSE ADHERENCE TO PLANS. ADDITIONAL ADJUSTMENTS MADE WITH TOP WING AND/OR THRUST VARIATIONS ONLY

### POWER:

EITH A COX .020 OR A CUB .024 (1/4A CLASS) ENGINE CAN BE EMPLOYED



## RADI-O-TOO

COMPACT 1/4-A CLASS BIPE FOR R/C. MAY ALSO BE FLOWN FREE-FLIGHT (USE SAME POWER & SETTINGS)

SCALE IN INCHES -



DESIGNED & DRAWN BY HERB CLUKEY  
 TRACED & INKED BY PAUL PLECAN