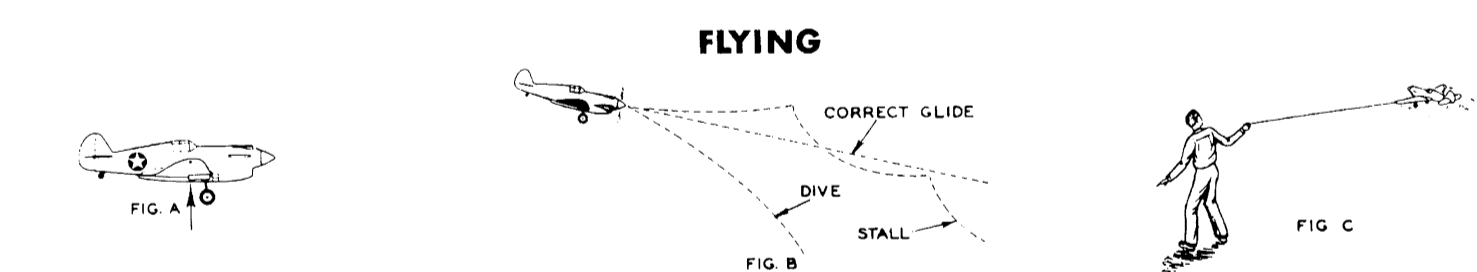
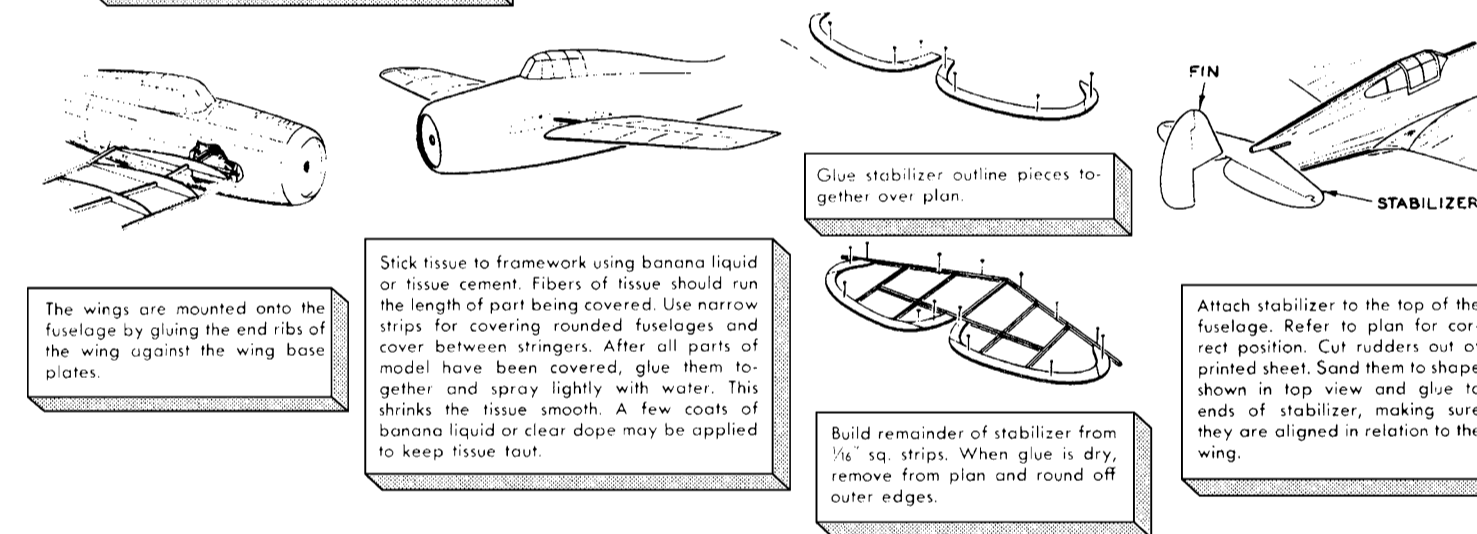
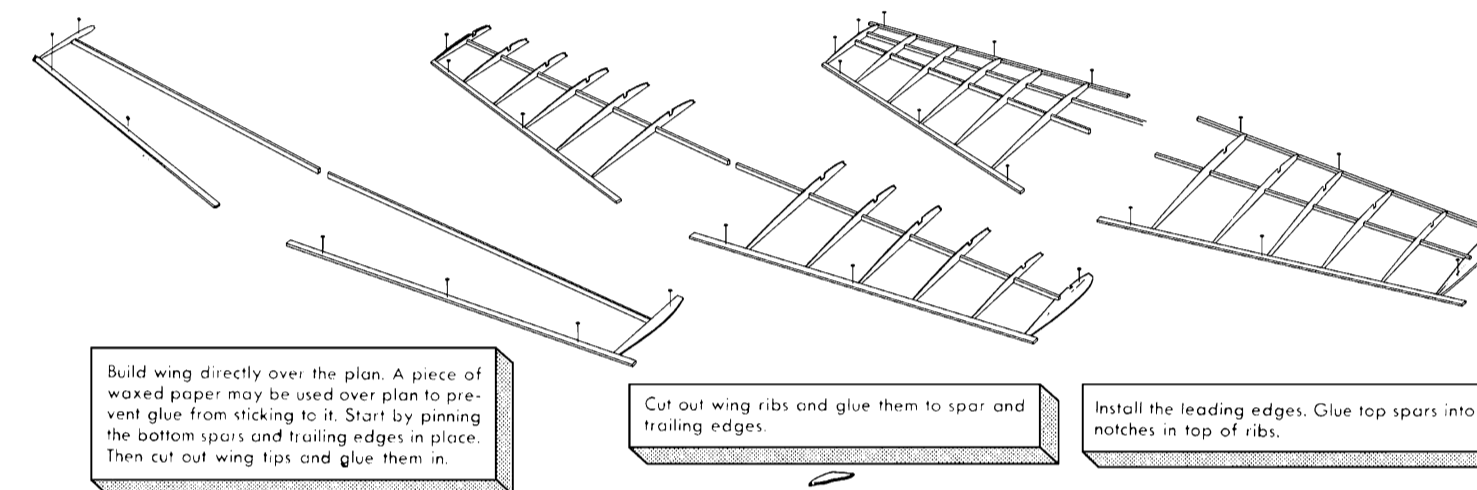
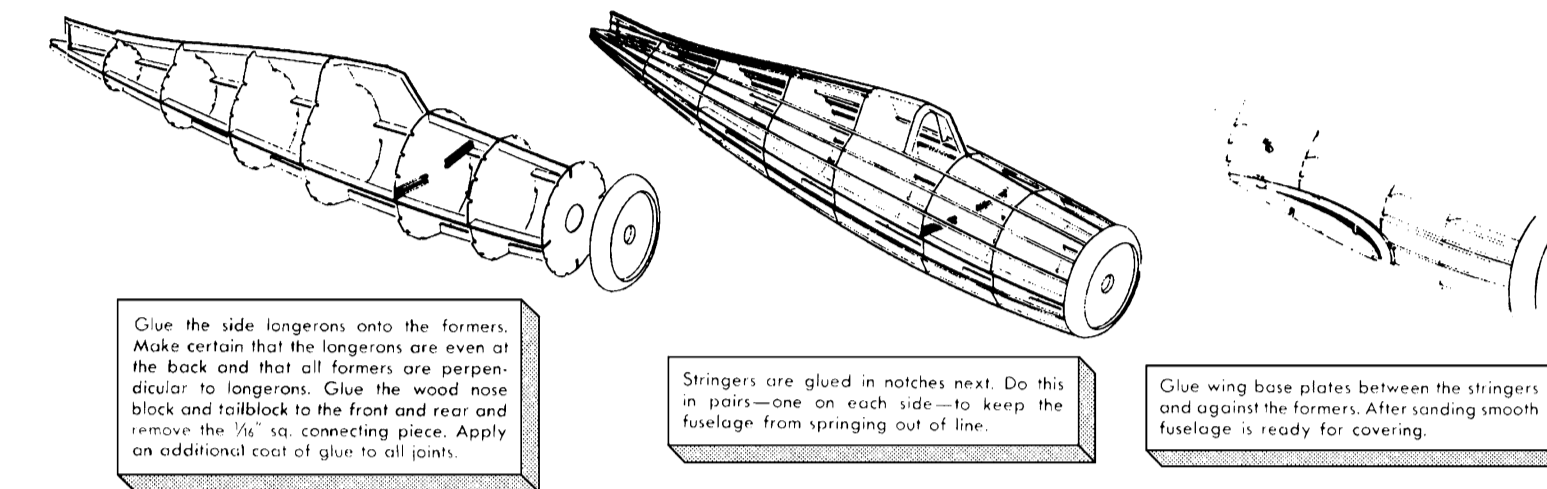
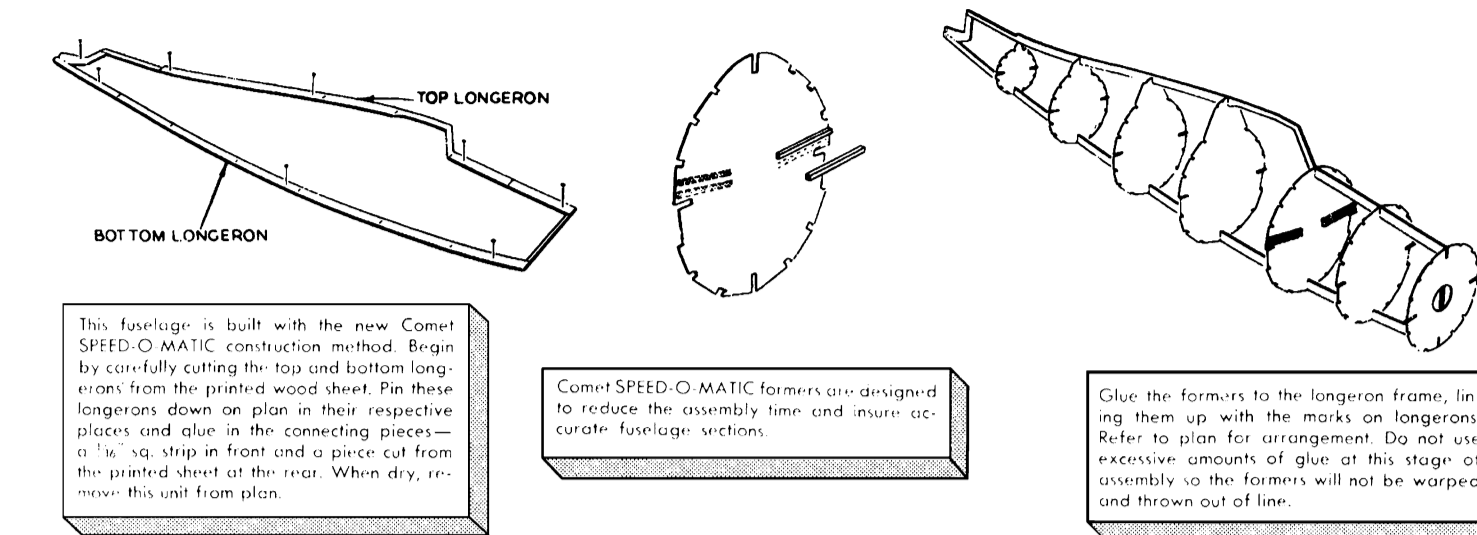


GENERAL INSTRUCTIONS

Although sketches may not be of the particular plane you are building they show typical construction procedure.

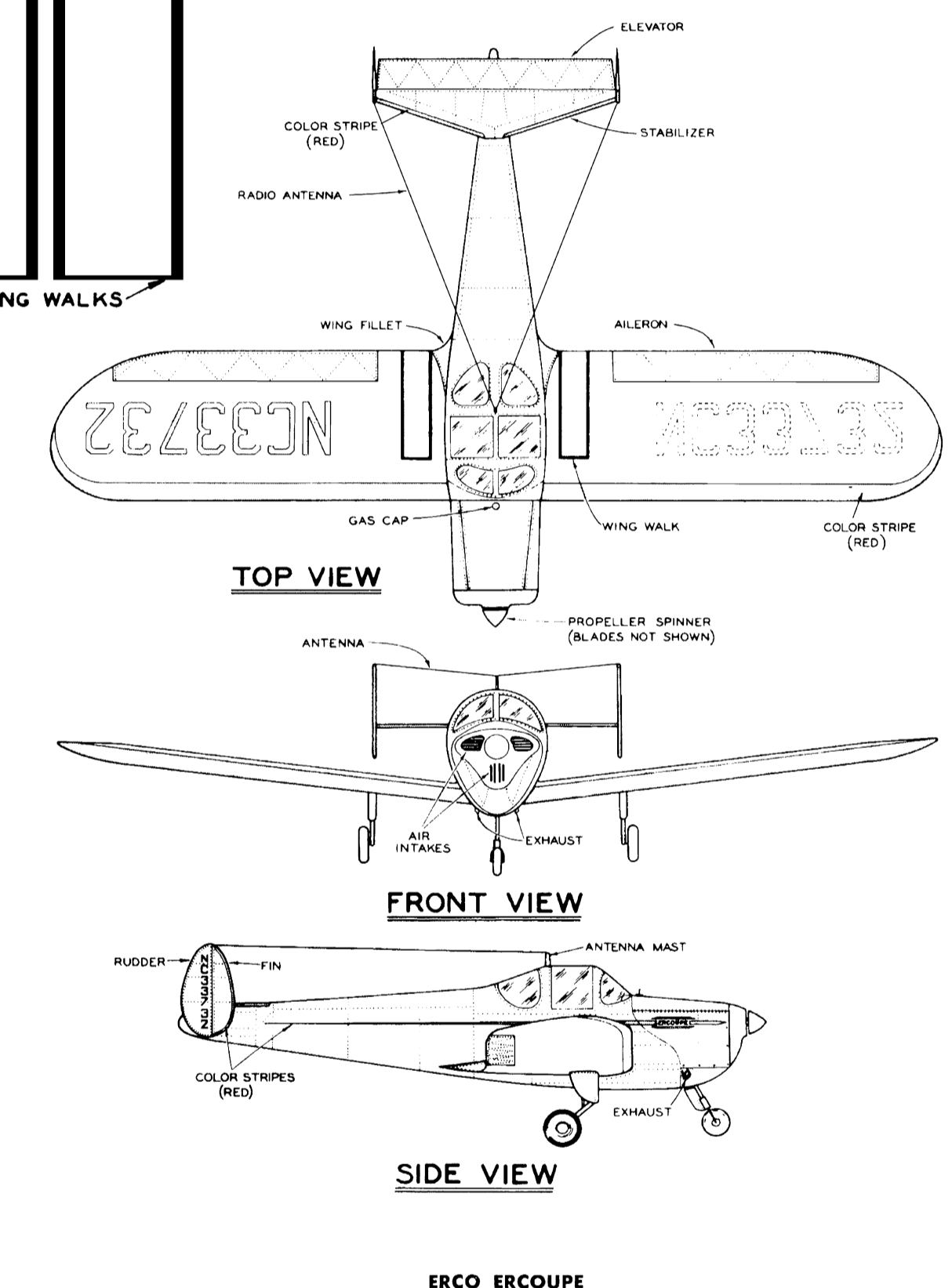
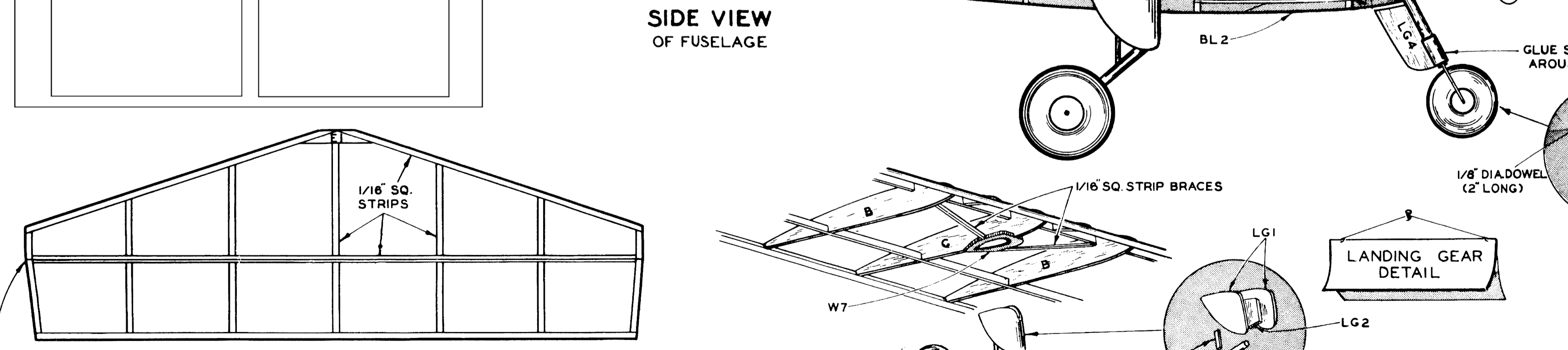
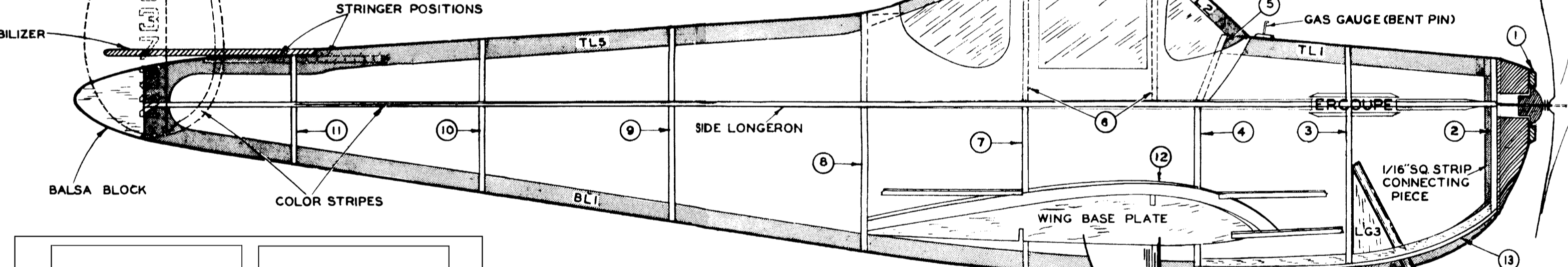
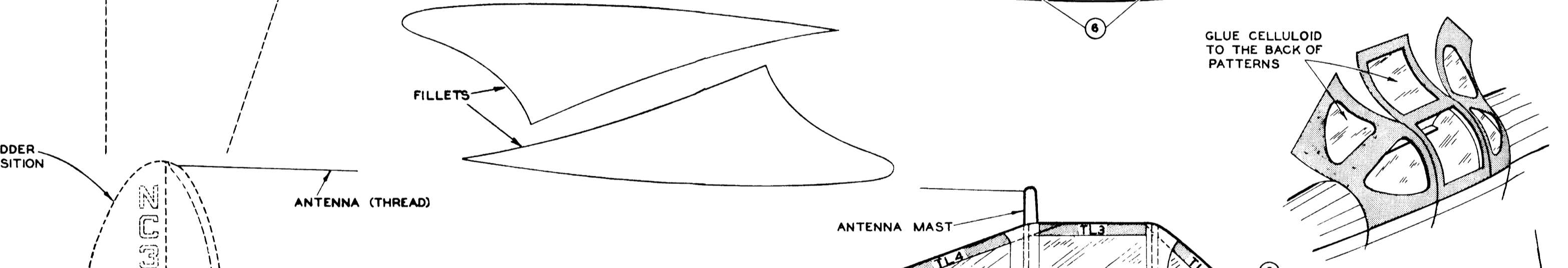
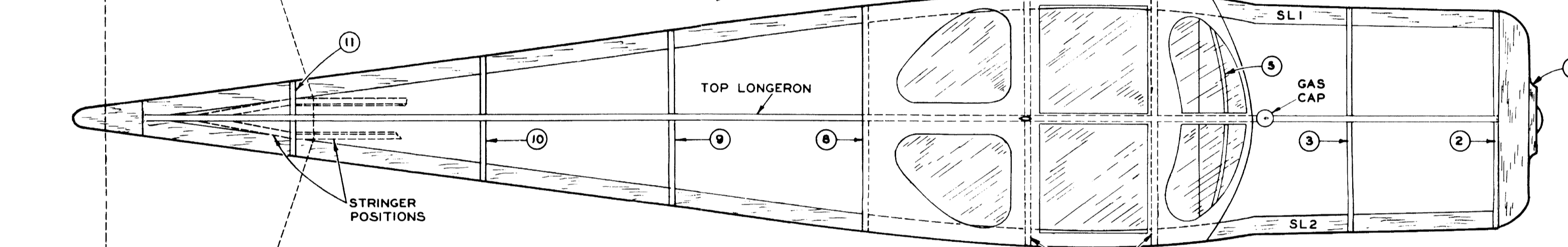
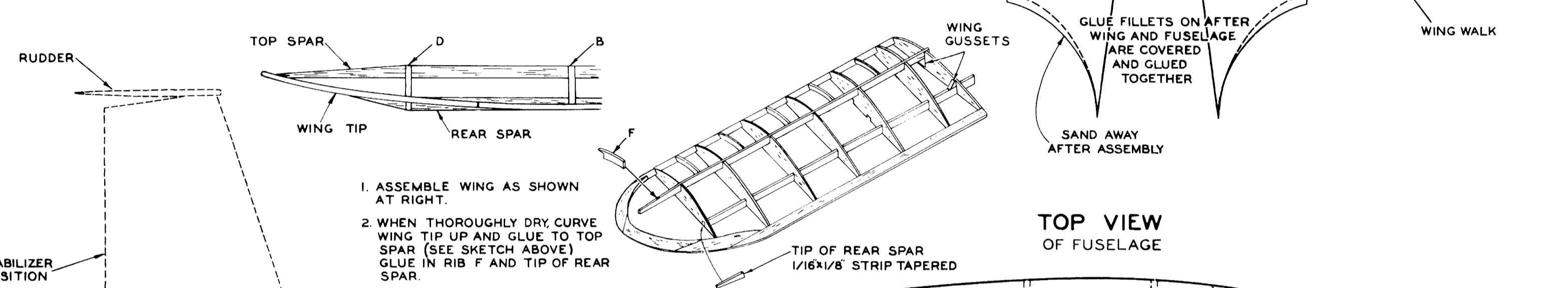
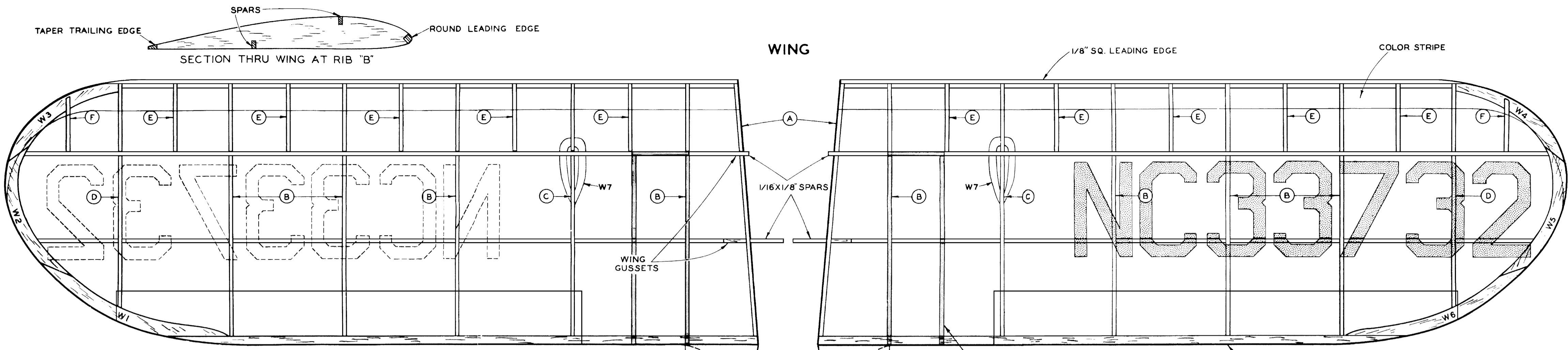


To insure good flights, the wing and tail surfaces must be without warps. Examine them carefully and if any have developed, straighten these out over heat.

Add clay or small tacks to nose of model until it balances at a point about $1/3$ back from leading edge of wing (Fig. A). Glide the model a few times. If it stalls and weight to the nose, or if it dives steeply, remove some of the weight (Fig. B). A bit of fun can be had by whirling the model on a thread (Fig. C). Attach thread to c-wing tip in line with the balance point of plane. Length of thread can vary, depending on space available.

Take-offs can be made easier by shortening the thread and paying it out when model is in the air. With a little practice you can climb or dive the plane by raising or lowering your hand. Perfect take-offs and landings are fun and educational. Spot landing and stunting contests can be held.

Experiments may also be made by tow-launching the model into the air with a length of thread.



The Ercope is an unconventional airplane with many advanced, well-developed features. The stated aim of the design was to have an airplane "intended for use by the private owner, simple and easy to fly and free from all dangers associated with stalling and spinning. A good field of view, low-powered economy and a 100 M.P.H. cruising speed were also desired."

The Ercope meets these exciting requirements with three unconventional features. 1. Inherently spinproof with effective lateral control at all speeds. 2. A simplified control system having the rudders and ailerons linked together thru the control wheel. This eliminates the rudder and the necessity for co-ordinating controls while in flight. 3. Tricycle gear eliminates delicate landing technique, hazards of ground-looping or nosing over. A steerable nose wheel linked with the control wheel makes taxiing easy and safe.

NC33732

NC33732

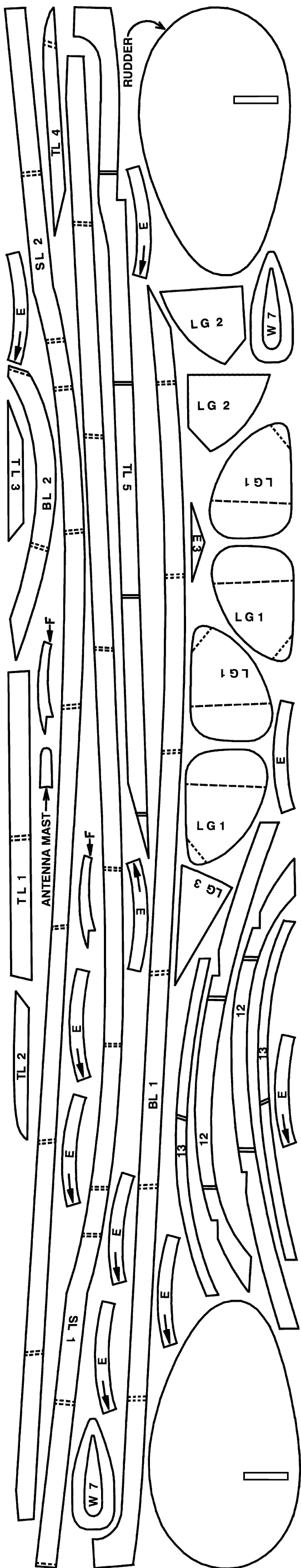
ERCOUPE ERCOUPE

ERCO ERCOUPE

WINGSpan 24 INCHES LENGTH 15-3/4 INCHES

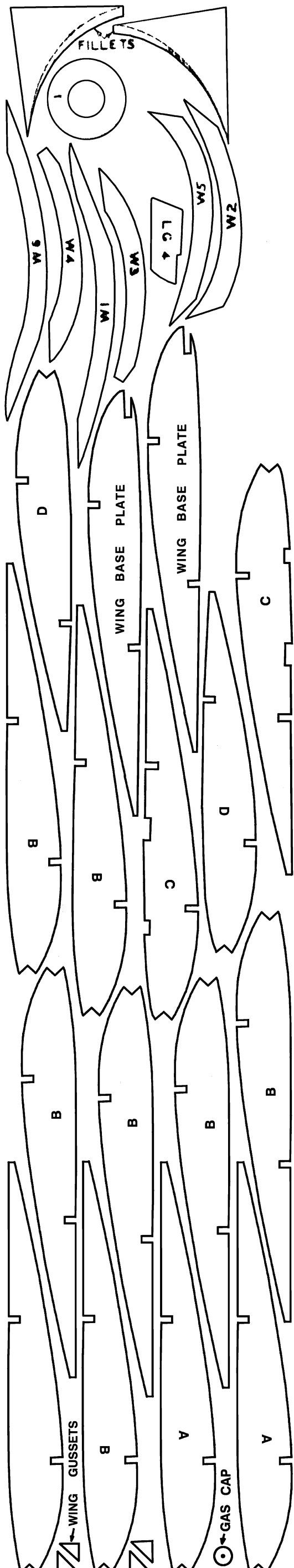
KIT NO. 3407 DRAWN BY Duane Webber

COMET MODEL HOBBYCRAFT CORP., CHICAGO, ILL.



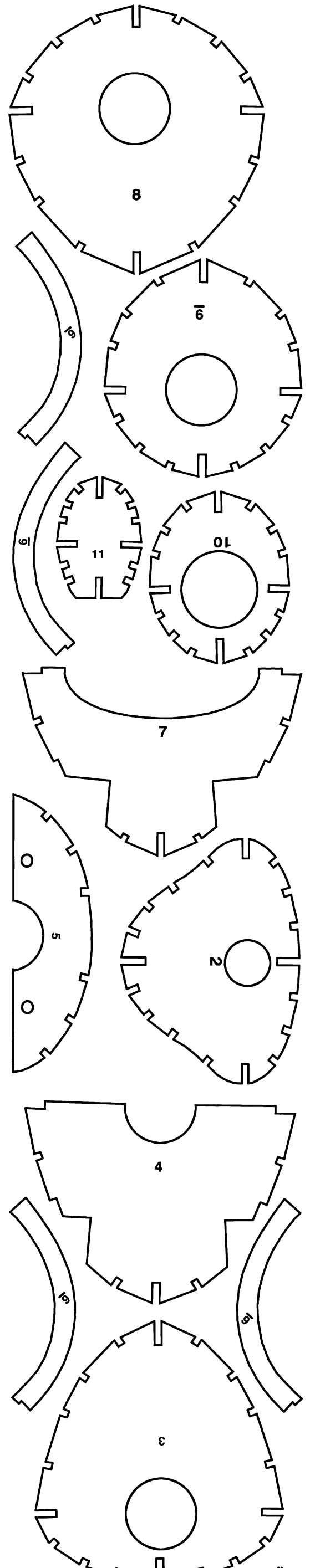
ERCOUPE
SHEET 4

KIT NO. 3407
1/16



ERCOUPE
SHEET 3

KIT NO. 3407
1/16



ERCOUPE KIT 3407 SHEET
1/16"