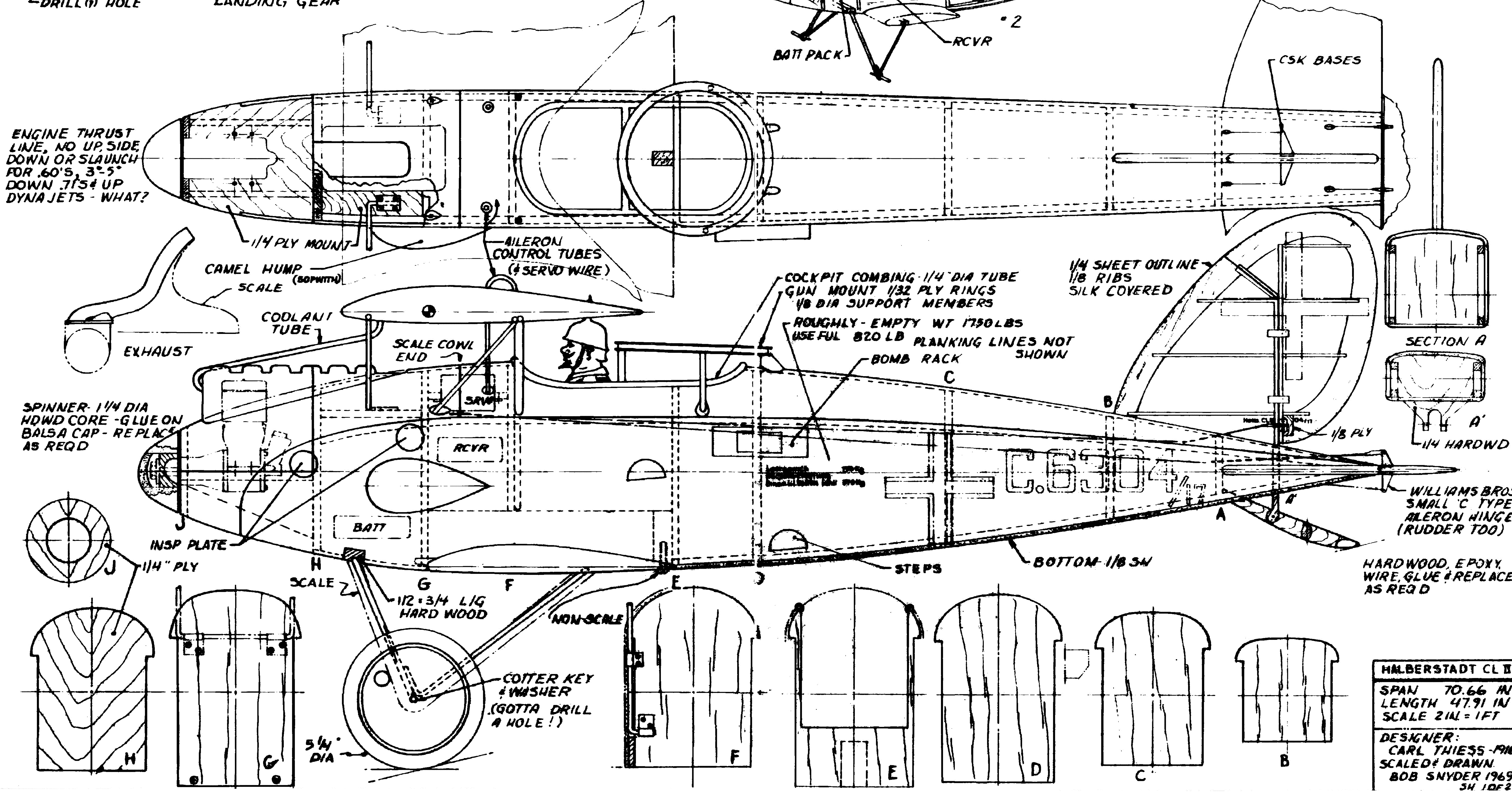
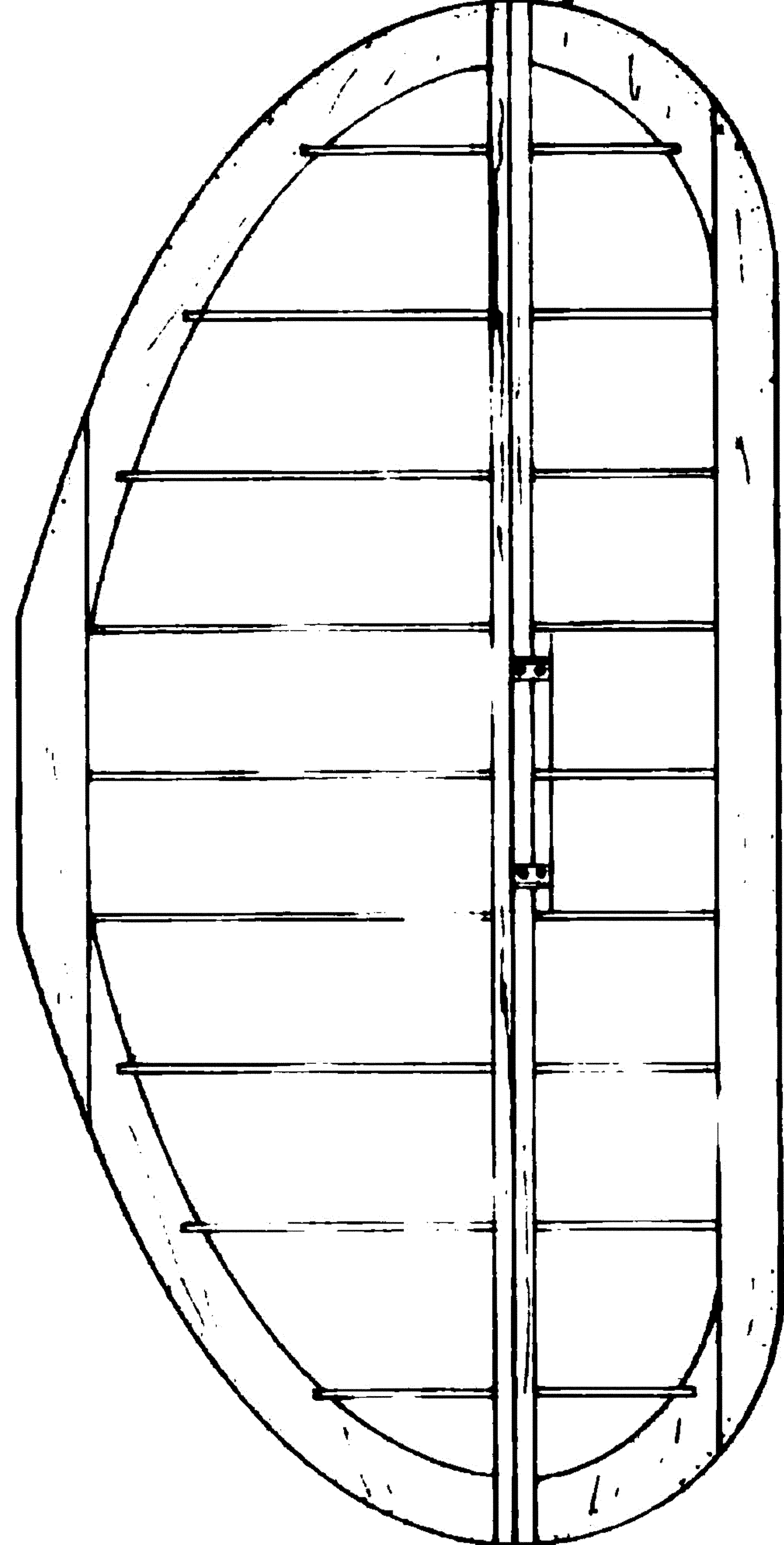


- FUSELAGE NOTES:
1. INSTALL ALL LINKAGES BEFORE PLANKING TOP
  2. PLANK TOP WITH 3/16 - 3/8 STRIP
  3. PUSH RODS ARE 1/4 SPRUCE OR NY-ROD (FOR HIDDEN)
  4. ALL BULK HEADS 1/4 Balsa
  5. WINGS & TAIL 0°-0°-0°

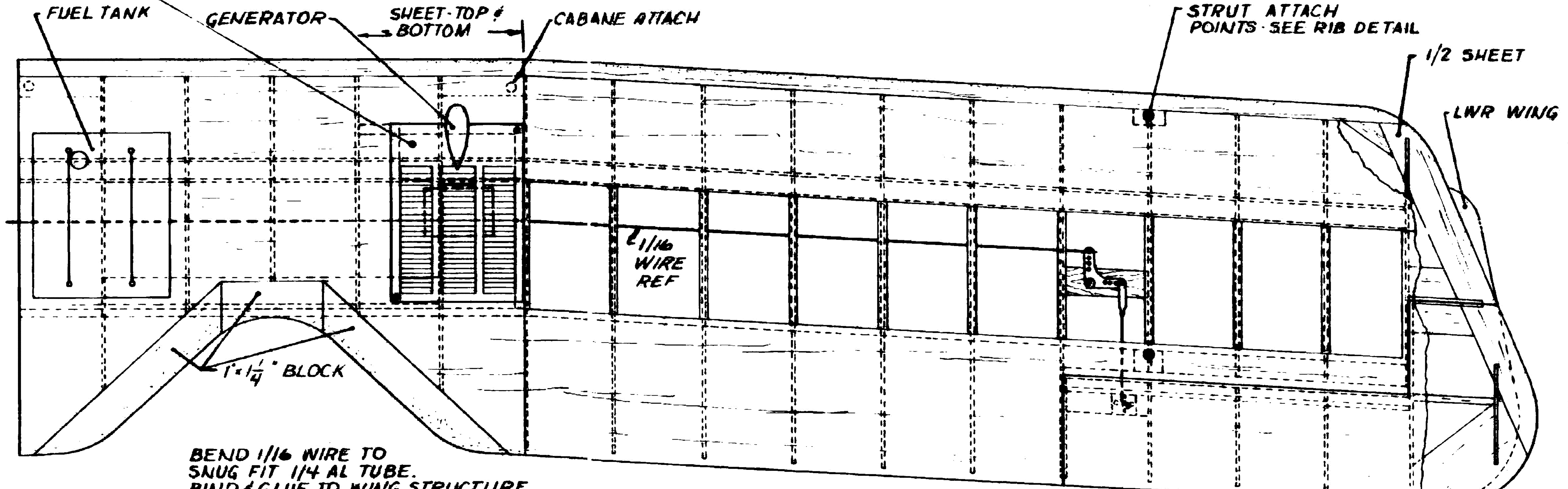
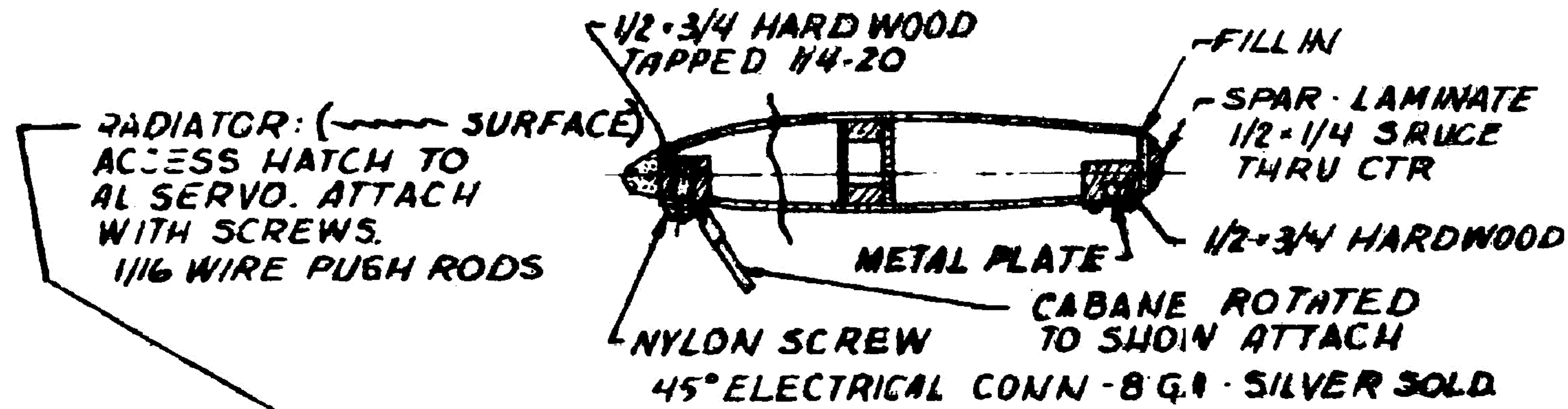


HALBERSTADT CL B  
SPAN 70.66 IN  
LENGTH 47.91 IN  
SCALE 2IN = 1FT  
DESIGNER:  
CARL THIESS - 1968  
SCALED & DRAWN  
BOB SNYDER 1969  
SH 10F2

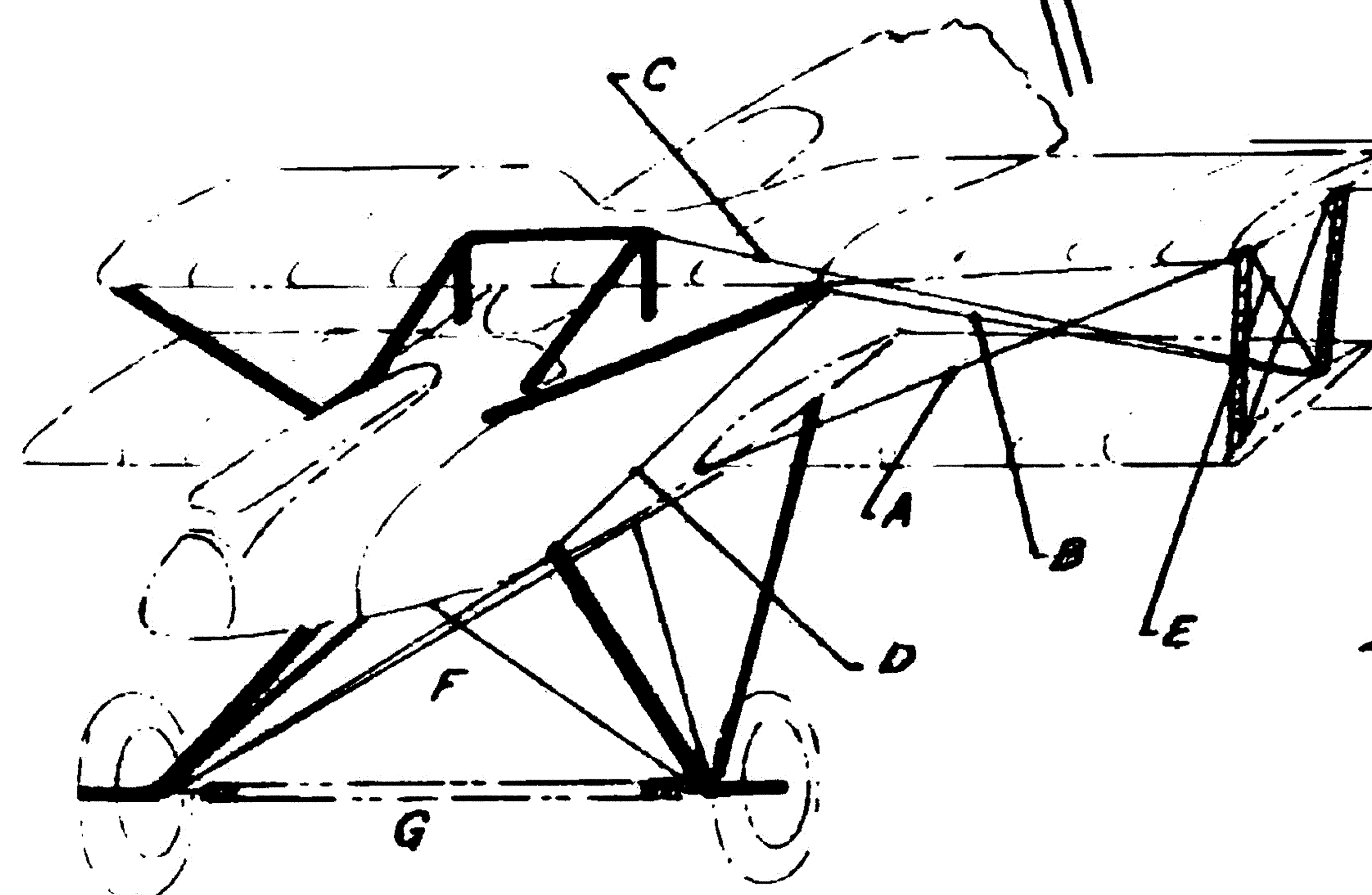
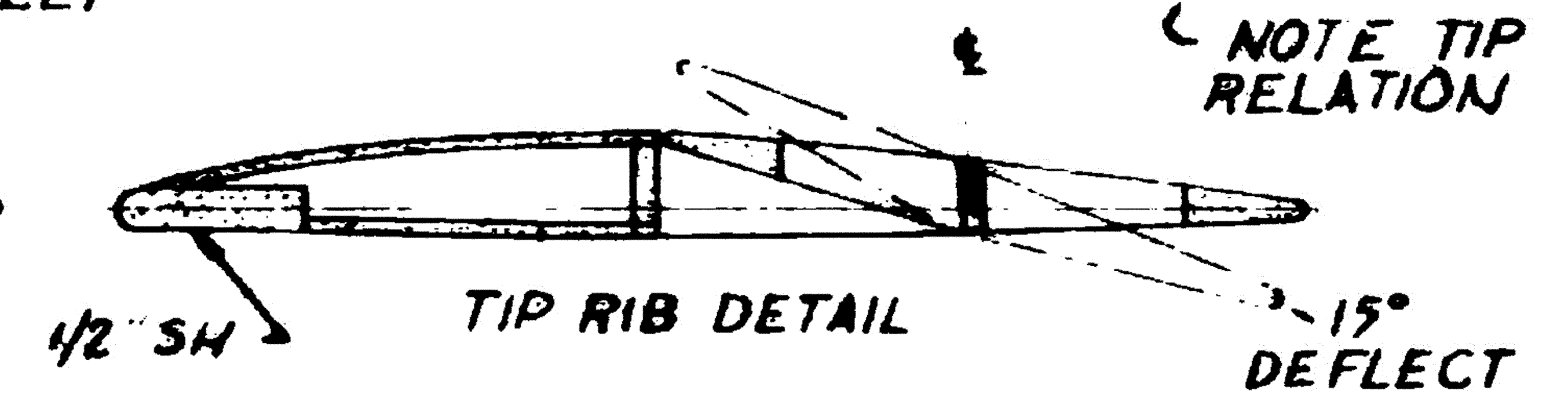
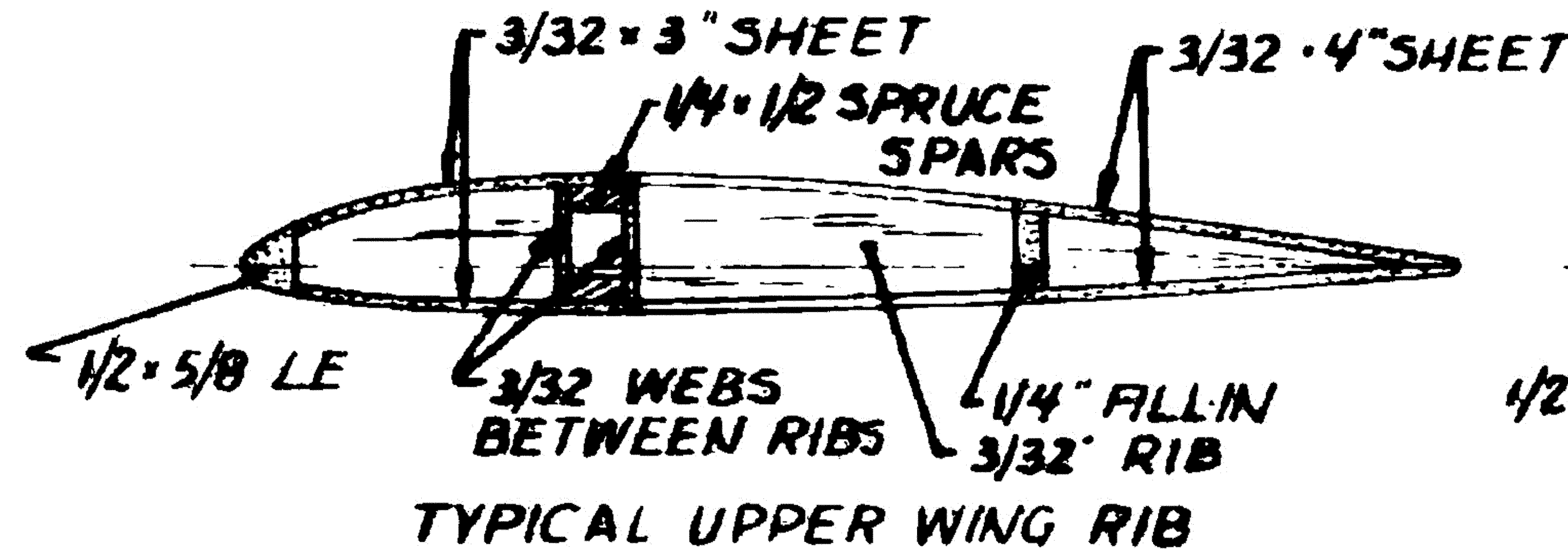
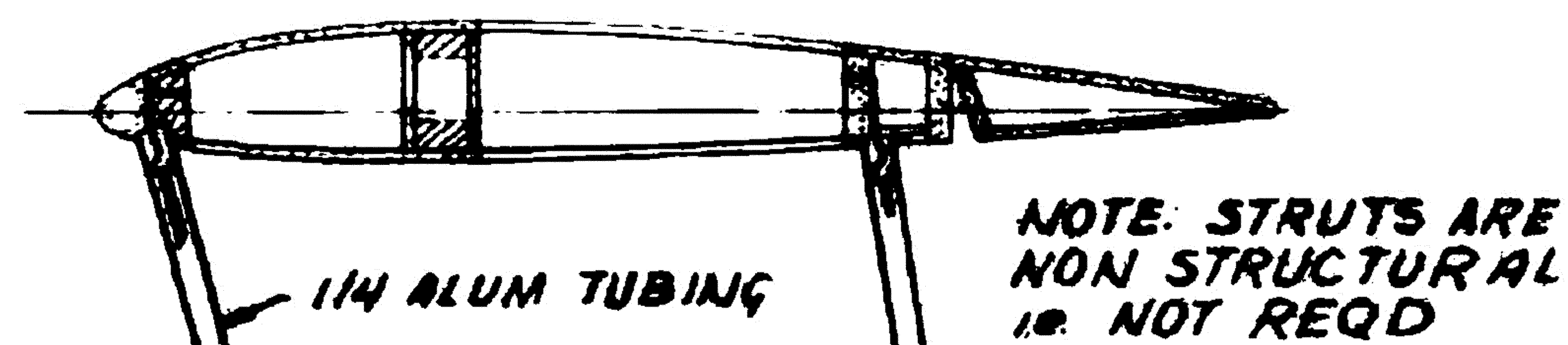
3/8" SHEET OUT LINE



SPARS - 1/4 x 3/8 SPRUCE  
RIBS - 3/32 Balsa  
HORNS - SEE FUS  
HINGE - PREFERENCE

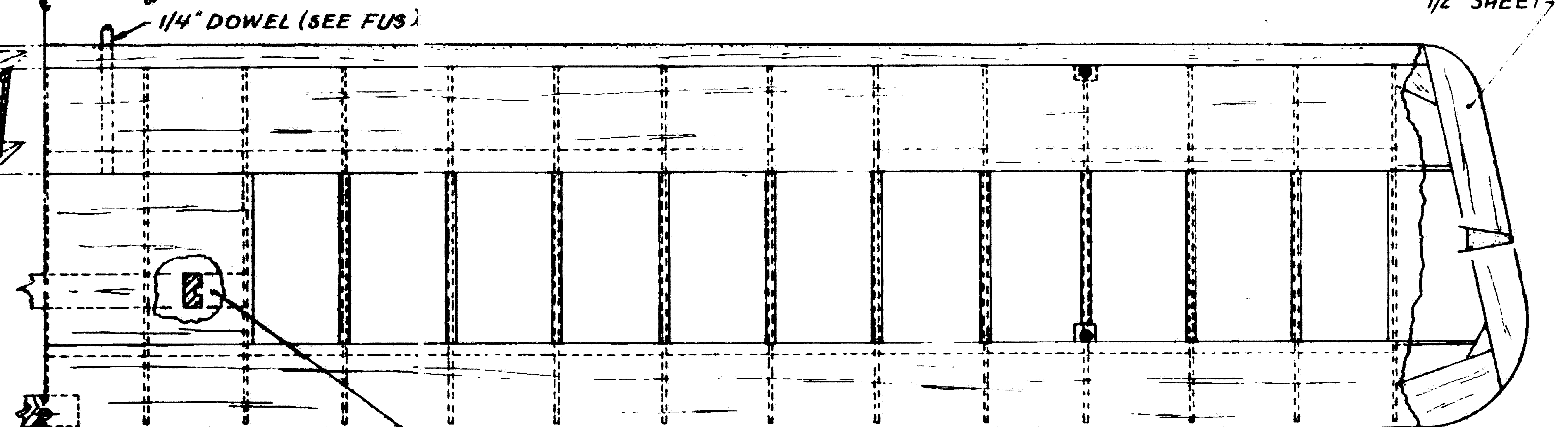


BEND 1/16 WIRE TO SNUG FIT 1/4 AL TUBE.  
BIND & GLUE TO WING STRUCTURE  
CUT STRUTS TO ENTER WING.  
LIGHT RUBBER BAND SECURE STRUTS



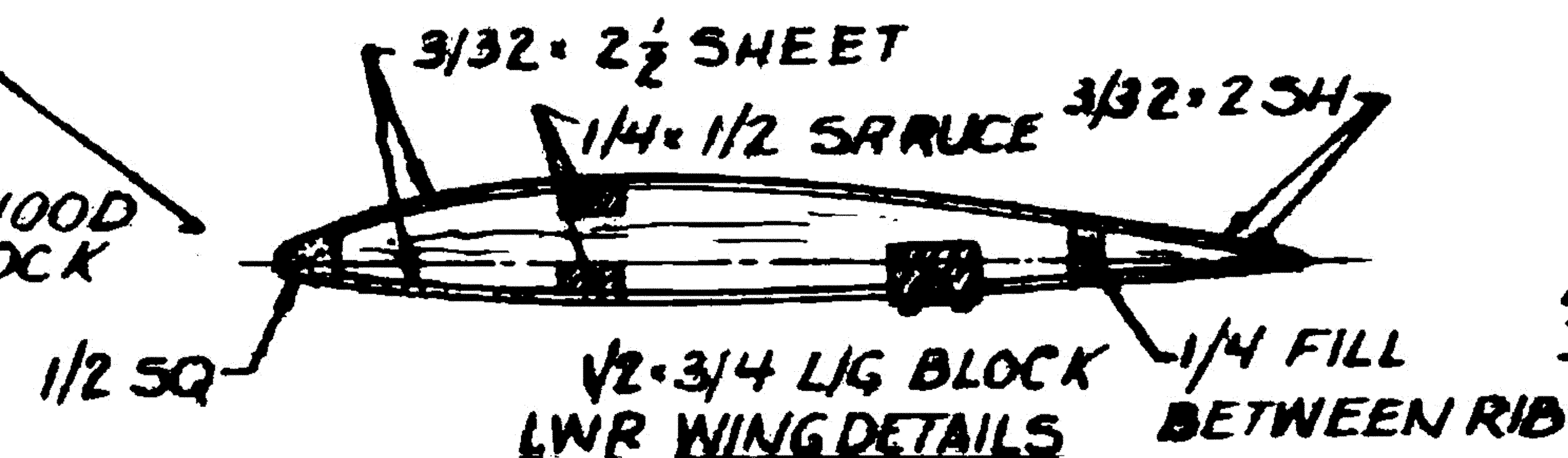
RIGGING

WIRE A - WING ROOT LWR FRONT TO TOP FRONT STRUT  
B - TOP FRONT CABANE TO LWR REAR STRUT  
C - TOP REAR CABANE TO LWR REAR STRUT  
D - TOP FWD CABANE TO FWD L/G  
E - "X" IN STRUTS  
F - "X" IN L/G, FRONT & REAR  
G - SPRING



1/4" DIA WING ATTACH HOLE  
1/8 PLY BACKUP

1/2 x 3/4 HARDWOOD L/G ATTACH BLOCK



WING NOTES:  
1. SILK COVERED.  
2. NO DIHEDRAL, EITHER WING.  
3. BUILD WINGS IN ONE PIECE.

HALBERSTADT CLII