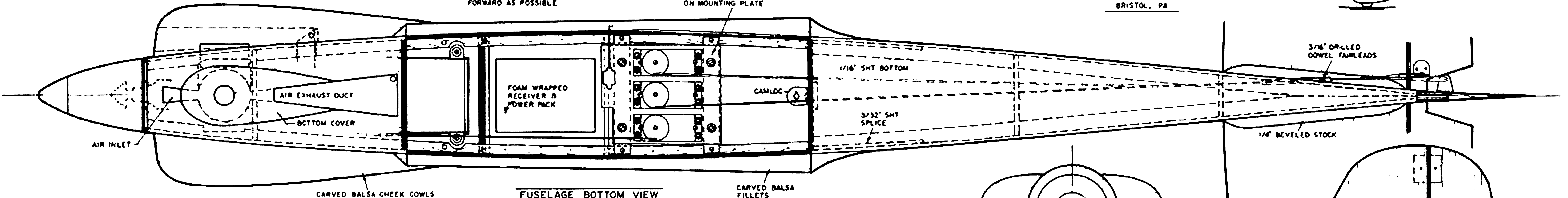


TRACED FROM  
GENERAL ARRANGEMENT  
-DENIGHT SPECIAL-  
DENIGHT AIRCRAFT ASSOCIATES  
BRISTOL, PA

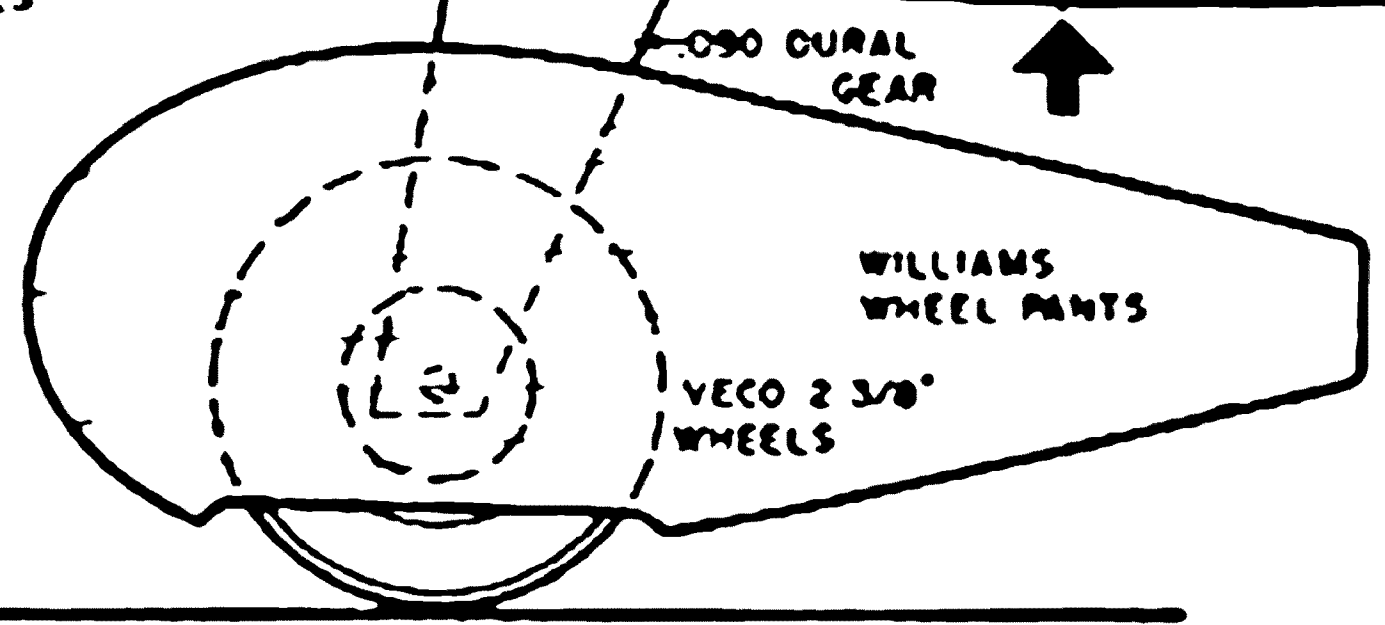
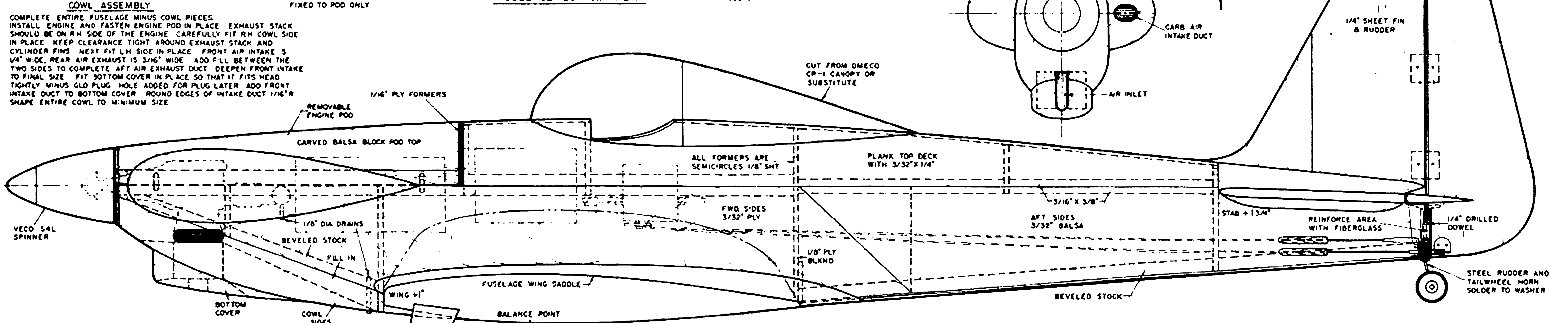


MOUNT RC EQUIPMENT AS FAR FORWARD AS POSSIBLE

ELEVATOR, RUDDER & MOTOR SERVOS ON MOUNTING PLATE

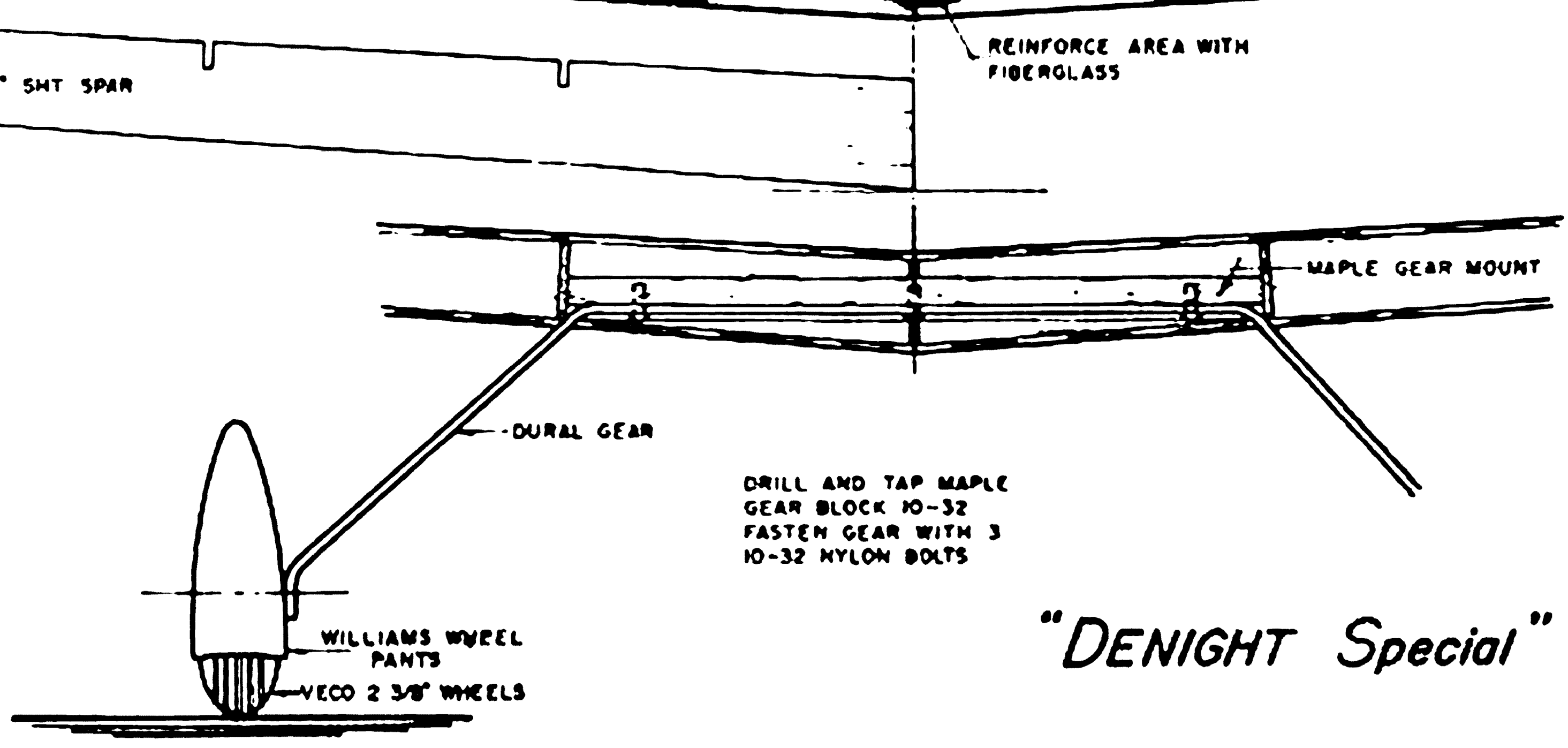
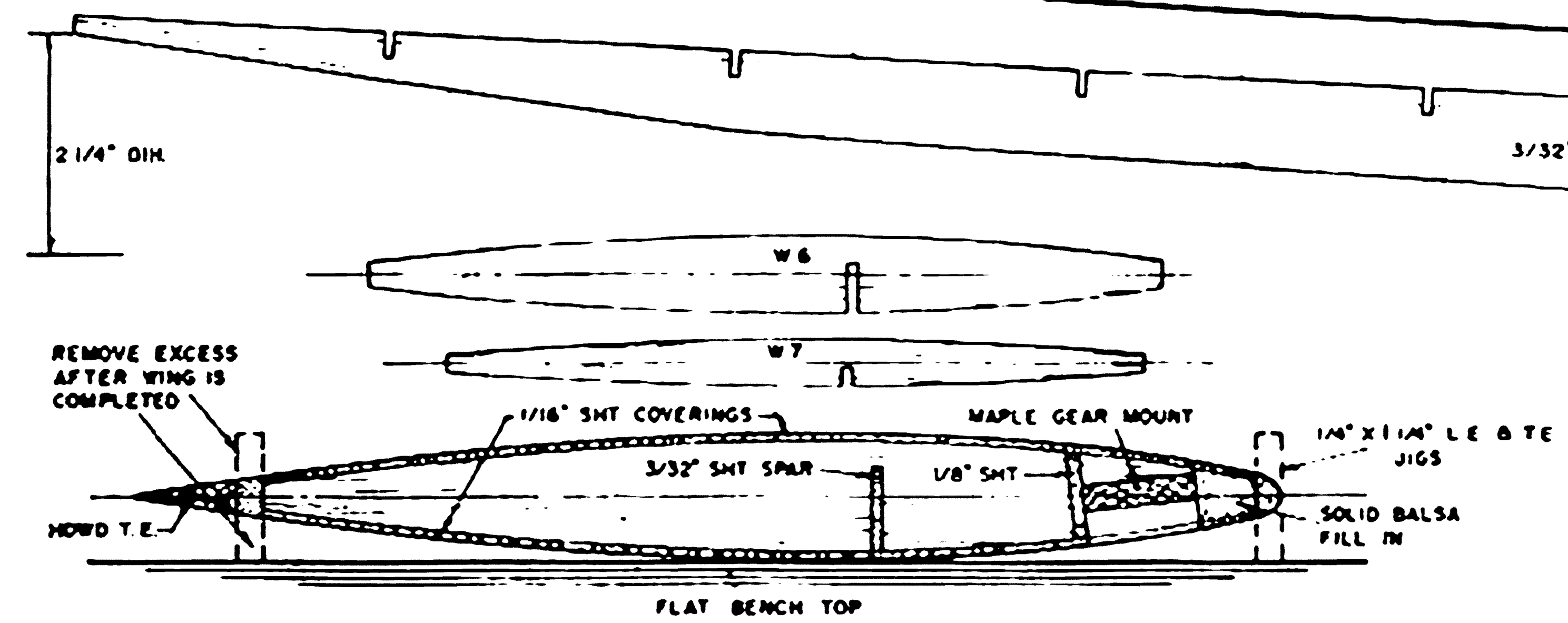
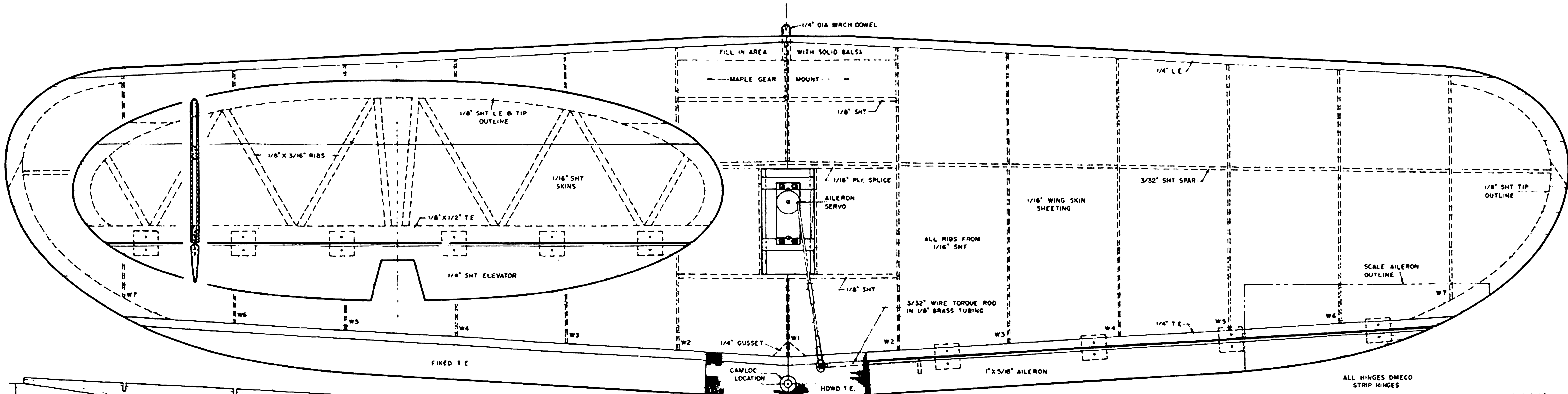


**COWL ASSEMBLY**  
COMPLETE ENTIRE FUSELAGE MINUS COWL PIECES. INSTALL ENGINE AND FASTEN ENGINE POD IN PLACE. EXHAUST STACK SHOULD BE ON RH SIDE OF THE ENGINE. CAREFULLY FIT RH COWL SIDE IN PLACE. KEEP CLEARANCE TIGHT AROUND EXHAUST STACK AND CYLINDER FINS. NEXT FIT LH SIDE IN PLACE. FRONT AIR INTAKE IS 1/4" WIDE. REAR AIR EXHAUST IS 3/16" WIDE. ADD FILL BETWEEN THE TWO SIDES TO COMPLETE AFT AIR EXHAUST DUCT. DEEPEN FRONT INTAKE TO FINAL SIZE. FIT BOTTOM COVER IN PLACE SO THAT IT FITS HEAD TIGHTLY. MINUS GLO PLUG HOLE. ADD FOR PLUG LATER. ADD FRONT INTAKE DUCT TO BOTTOM COVER. ROUND EDGES OF INTAKE DUCT 1/16" R. SHAPE ENTIRE COWL TO MINIMUM SIZE.



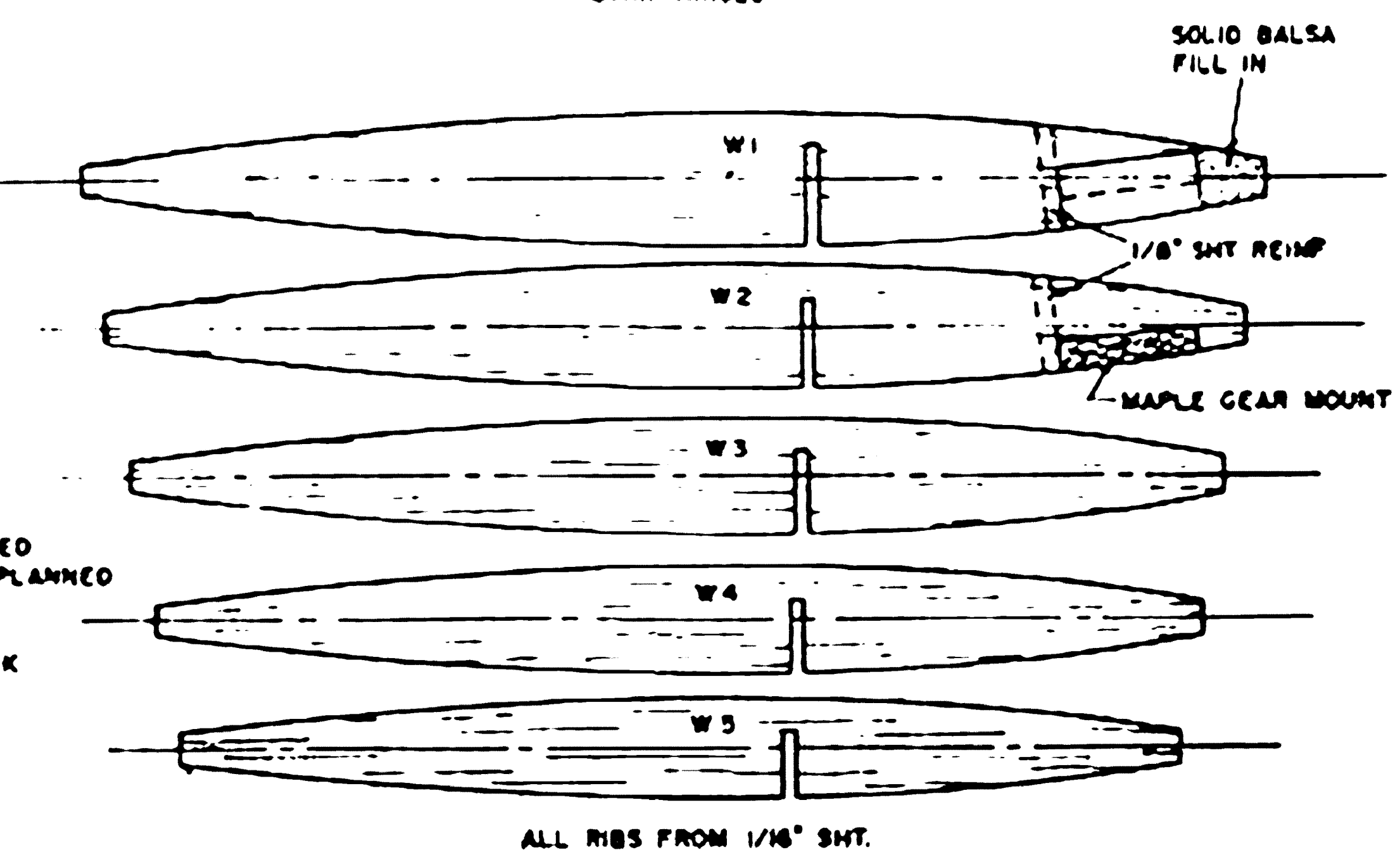
Nick D'Apuzzo's  
"DENIGHT Special" FOR  
FORMULA I RACING

DESIGNED BY HAROLD W BOLT  
WING SPAN - 48"  
WING AREA - 4550"  
WEIGHT - 5 lbs  
POWER - KOB .40RR  
AIRFOIL - NACA 6502  
DRAWN BY - DAVE KELLY



**WING CONSTRUCTION**  
 OVERSIZE LE & TE ARE LAID OUT ON DIHEDRAL BOARD OR MAGNA JIG TO MATCH WING PLAN FORM. C OF LE & TE, RIBS ARE INSTALLED BOTTOM SIDE UP. SPARS & LANDING GEAR MOUNT ARE ADDED. BOTTOM IS SHEETED AND WING THEN IS FLIPPED OVER FOR TOP SHEETING. LE & TE EXCESS IS NOW REMOVED.

**SINGLE AILERON EXPERIENCE**  
 ABOUT 3/16\"/>



*"DENIGHT Special"*