

RIB HOLE PUNCH TEMPLATE



3/32" SHT. L.E. PLANKING
1/4" SQ. L.E.

SOFT Balsa BLOCK HOLLOW AS SHOWN

ADJUSTABLE LEADOUTS - SEE DETAILS

OUTBOARD WING 1" SHORTER RESPACE RIBS AS REQ'D. (1 OZ. TIP WEIGHT, OUTBOARD ONLY)

EXTERNAL 1/4" DOUBLER

1/2" Balsa NOSE RING

FILL W/ SCRAP

ADDITIONAL TK. MODIFICATION

TOP VIEW DETAILING 1/8" SIDES, 1/4" DOUBLERS, ELEVATOR, MOTOR MOUNT & TANK DETAIL.

3/32" PLY NOSE RING

BIND TK TO MOTOR MOUNTS WITH FIBERGLASS STRIPS & EPOXY GLUE

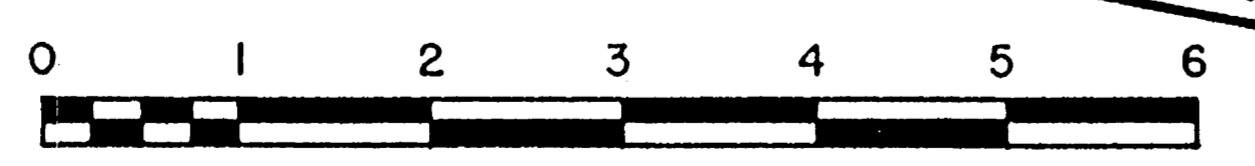
1/2" x 1/2" MOTOR MOUNTS
VECO T-21E TANK MODIFIED TO 525 OZ.
ROUND THESE CORNERS AFTER INITIAL ASSY TO IMPROVE AIRFLOW THRU COWLING

NOTE:
FOR ENGINE OFF-SET IF DESIRED. MOVE ENGINE MOUNT & TK. 3/16" INBOARD ON BULKHEADS 'B' & 'C'. THIS WILL ALLOW 2" OFF-SET WITH PROP. SHAFT ON FUSE. C.

VECO L.G. CLIPS SOLDERED TO 1/8" WIRE STRUT

4- SIG 2-56 X 1/2" FLAT HEAD SCREWS

3" DU-BRO WHEELS



BEARCAT
by
AL RABE

DRAWN BY: CHARLES JACKSON

1/4" SHT. FLAP

FUSELAGE IS WIDER AT BOTTOM

EXTERNAL 1/4" DOUBLER

EXTERNAL 1/4" DOUBLER COMES TO HERE

FIBERGLASS FROM HERE TO NOSE

1/4" SQ. BELLCRANK SUPPORT

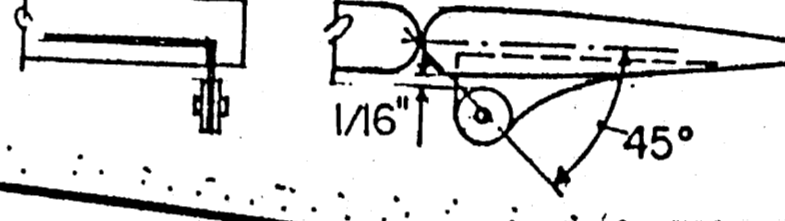
FIBERGLASS AROUND WING T.E. INSIDE & OUTSIDE

1/8" x 1/4" FUSE. SPACERS

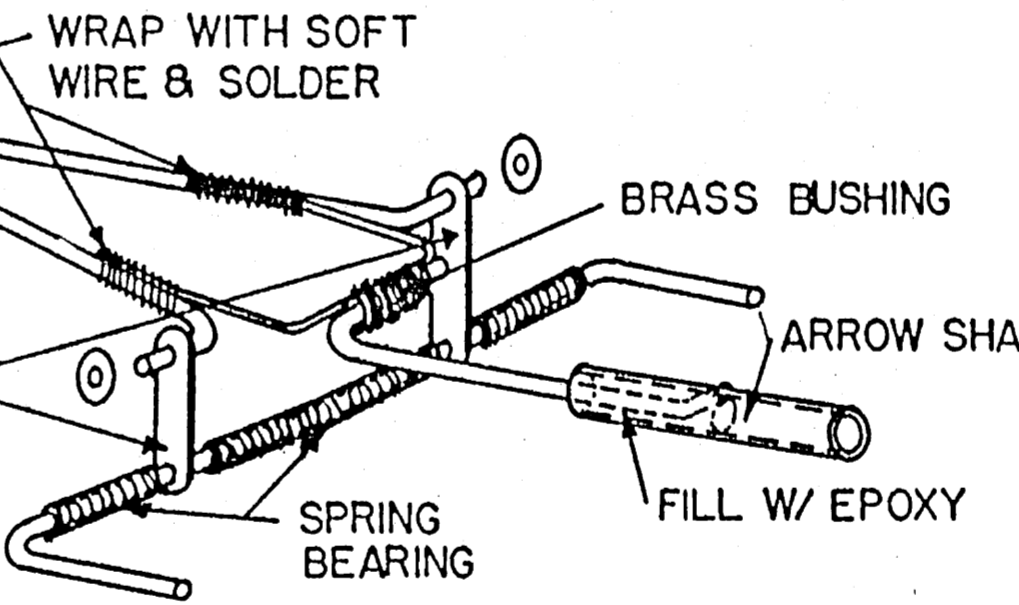
TAILWHEEL SUPPORT BULKHEAD FROM SCRAP 1/8" Balsa

7/8" PERFECT TAILWHEEL GROUND FLAT TO 3/4"

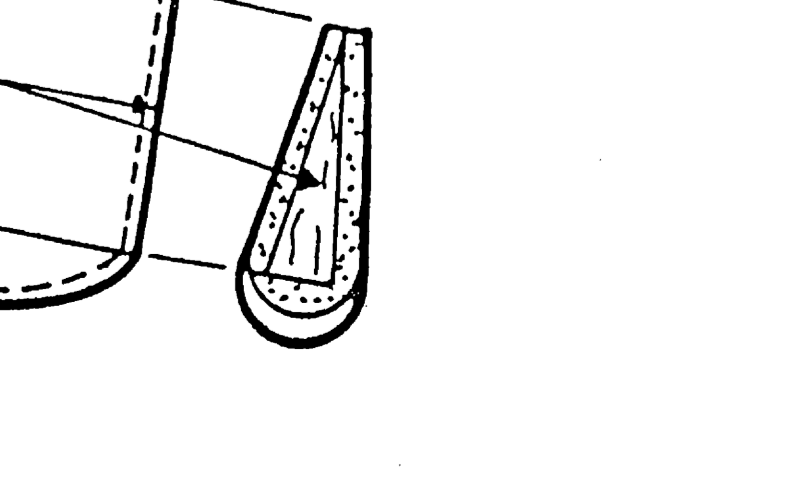
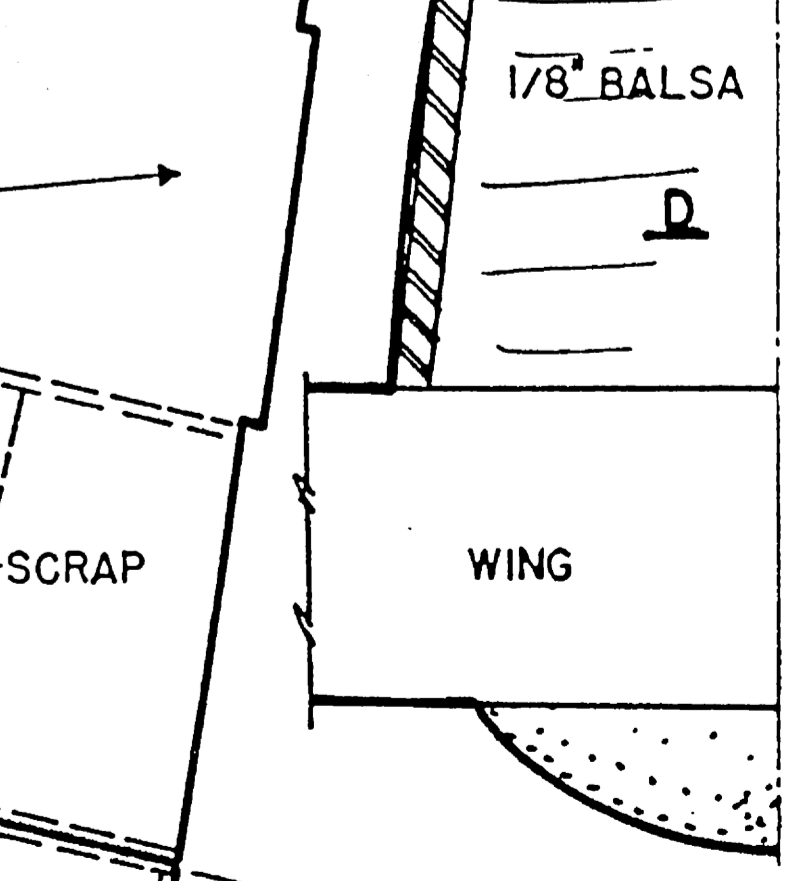
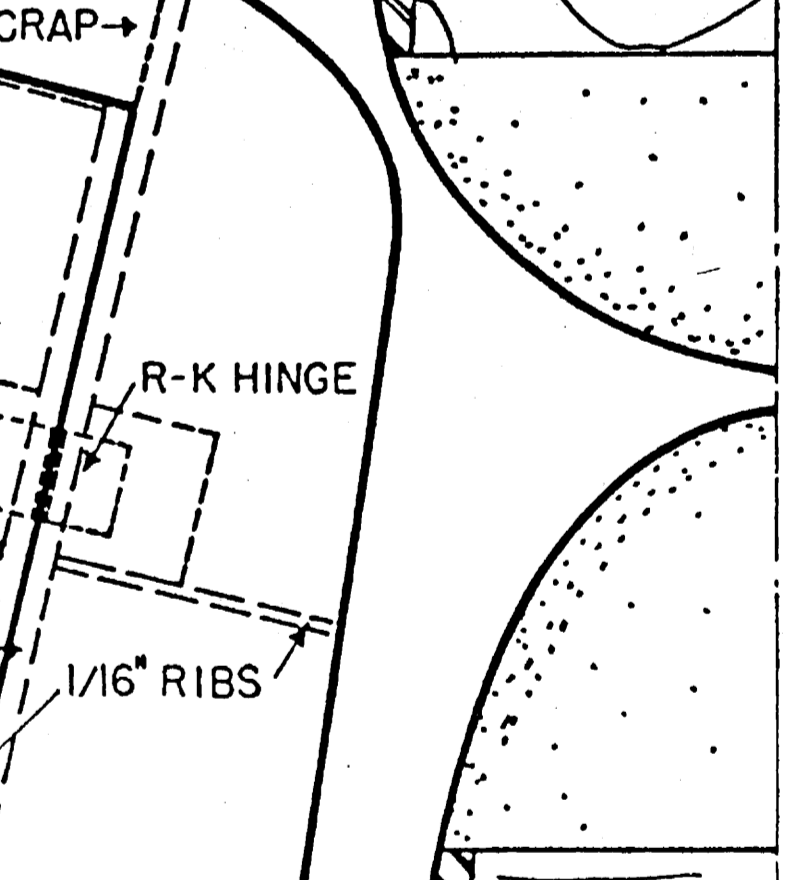
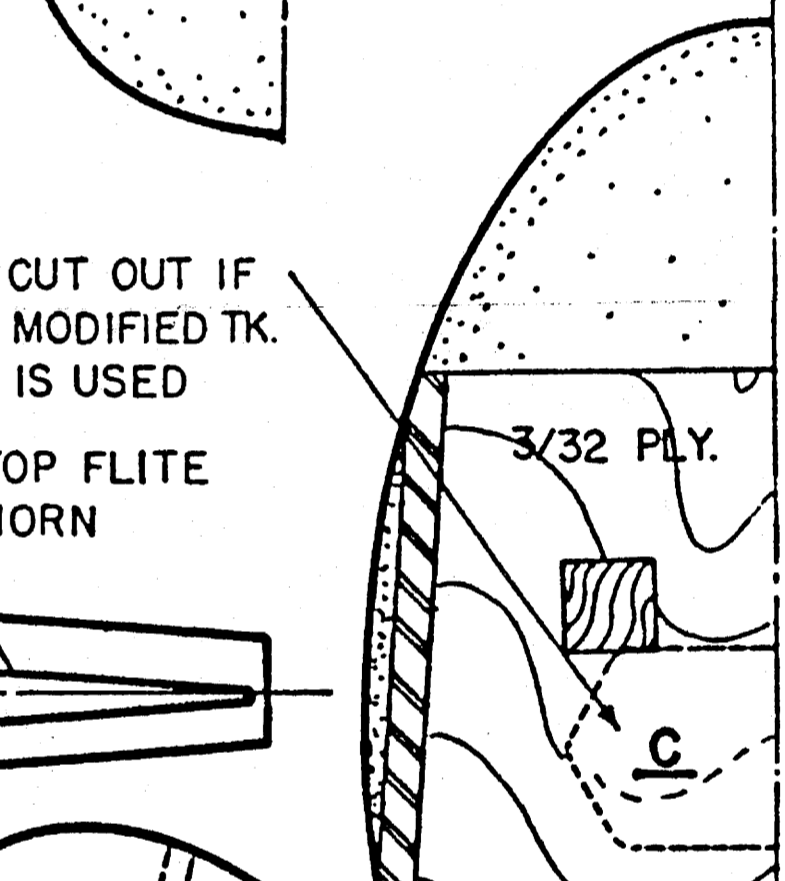
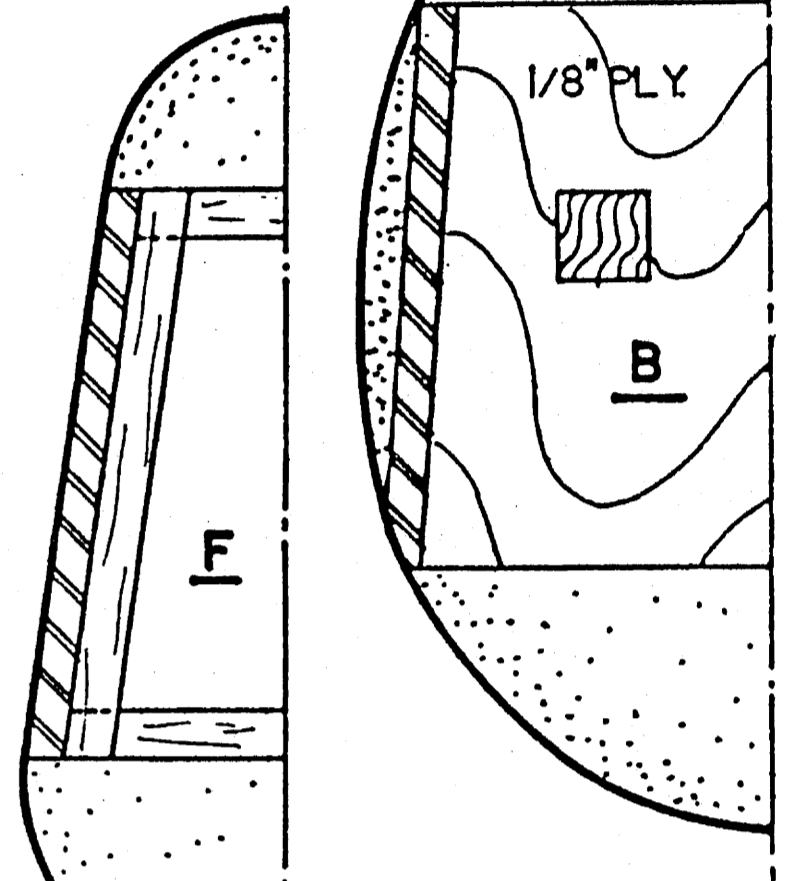
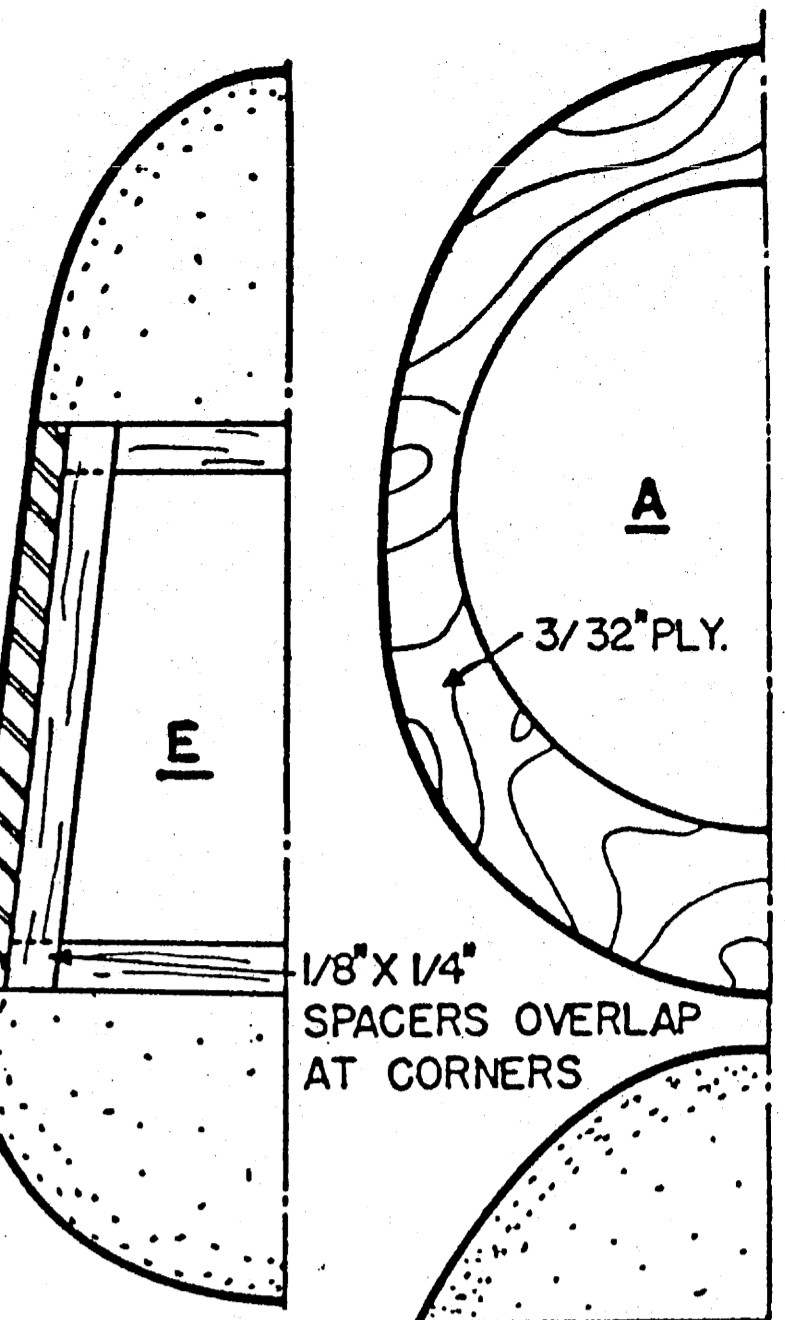
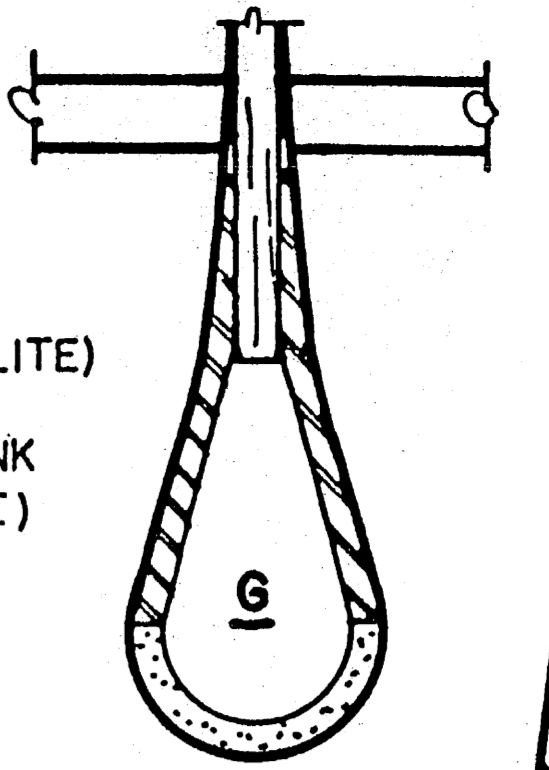
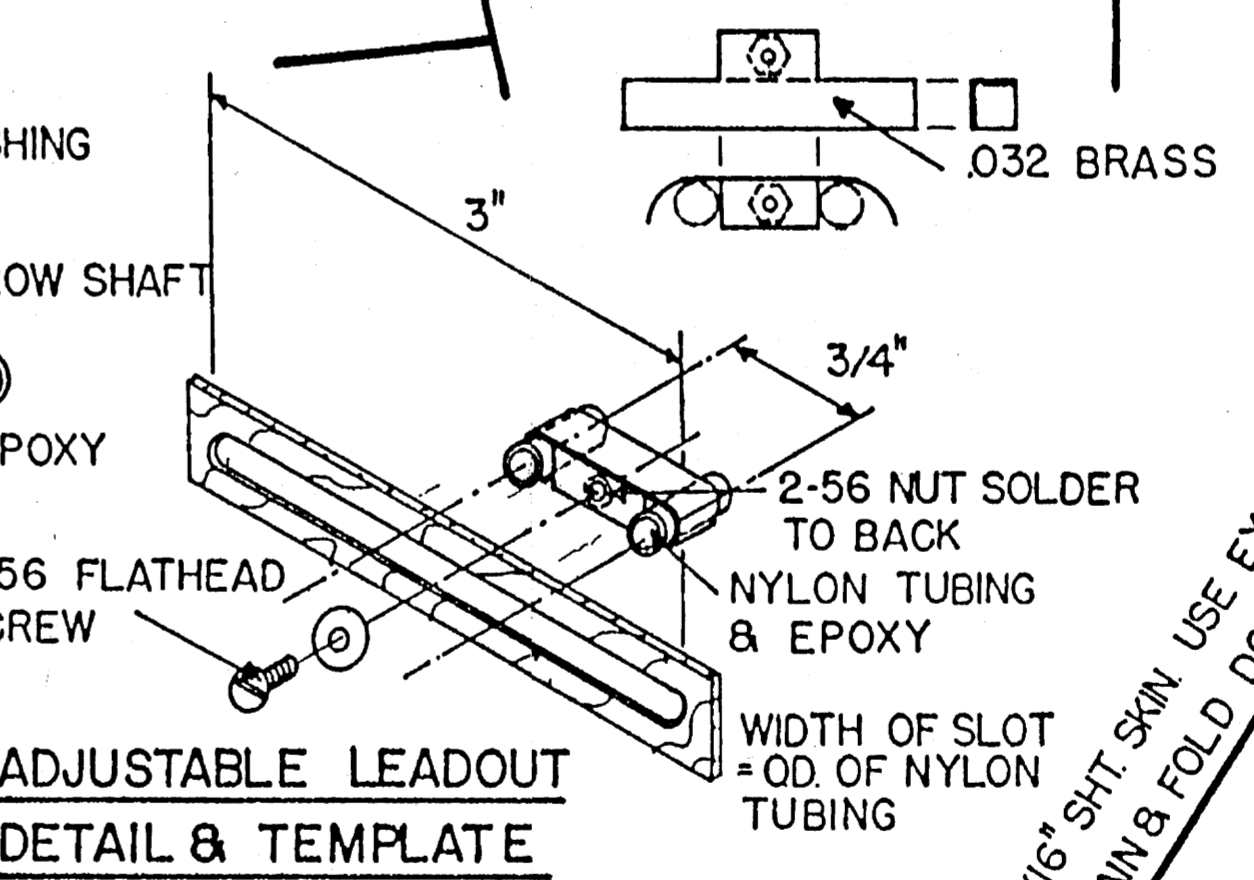
RUDDER PUSHROD HORN DET. & TEMPLATE



FLAP HORN DETAIL



ADJUSTABLE LEADOUT DETAIL & TEMPLATE



F&F