

PR Designs  
**Sperry  
 Monoplane**  
 Copyright P. Rake 2013

plan shows Vapor Rx  
 and  
 Nine Eagles gearbox  
 with extended shaft

glue wing to c/s struts  
**BALANCE**

hatch indicates  
 1/32 balsa behind struts  
 sand flush with sides

cut out and glue to nose  
 shape from  
 scrap 1/16

laminated outline  
 3 off 1/32x1/16  
 tail from 1/16 balsa  
 size or shape shown

alternative MM  
 for AEO 7 mm motor  
 1/32 ply

MM 1/32 ply

all these parts 1/32 ply

UCF

UCR

CSF

CSR

skid

UCD

horn

scrap view showing  
 optional nose detail  
 make from scrap

1/32 ply skid

F1 1/16 balsa

DH

TE1 1/16 balsa

CS1 1/16 balsa

CS2 1/16 balsa

R1

R1

CS1

CS1

3/32x1/8 l.e.

F6 1/16 balsa

F2 1/16 balsa

N1 1/16 balsa

F3 1/16 balsa

N2 1/16 balsa

F4 1/16 balsa

F5 1/16 balsa

pos. of  
 1/32 ply strut

1/32 balsa fill

pos. of  
 1/32 ply strut

uc/ shown actual size  
 assemble from UC parts  
 glue into slots in F2 & F3

1mm c.f. rod axle

1" vac-form wheels

0.02" wire z-bend

heat-shrink tube

1 mm c.f. rod

typical pushrod end

tail from 1/16 balsa  
 size or shape shown

cocktail stick  
 joiner

laminated outline  
 3 off 1/32x1/16

exit plates 1/32 balsa

T2 1/16 balsa

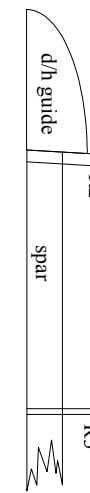
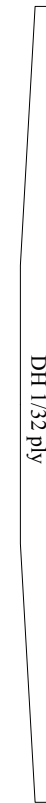
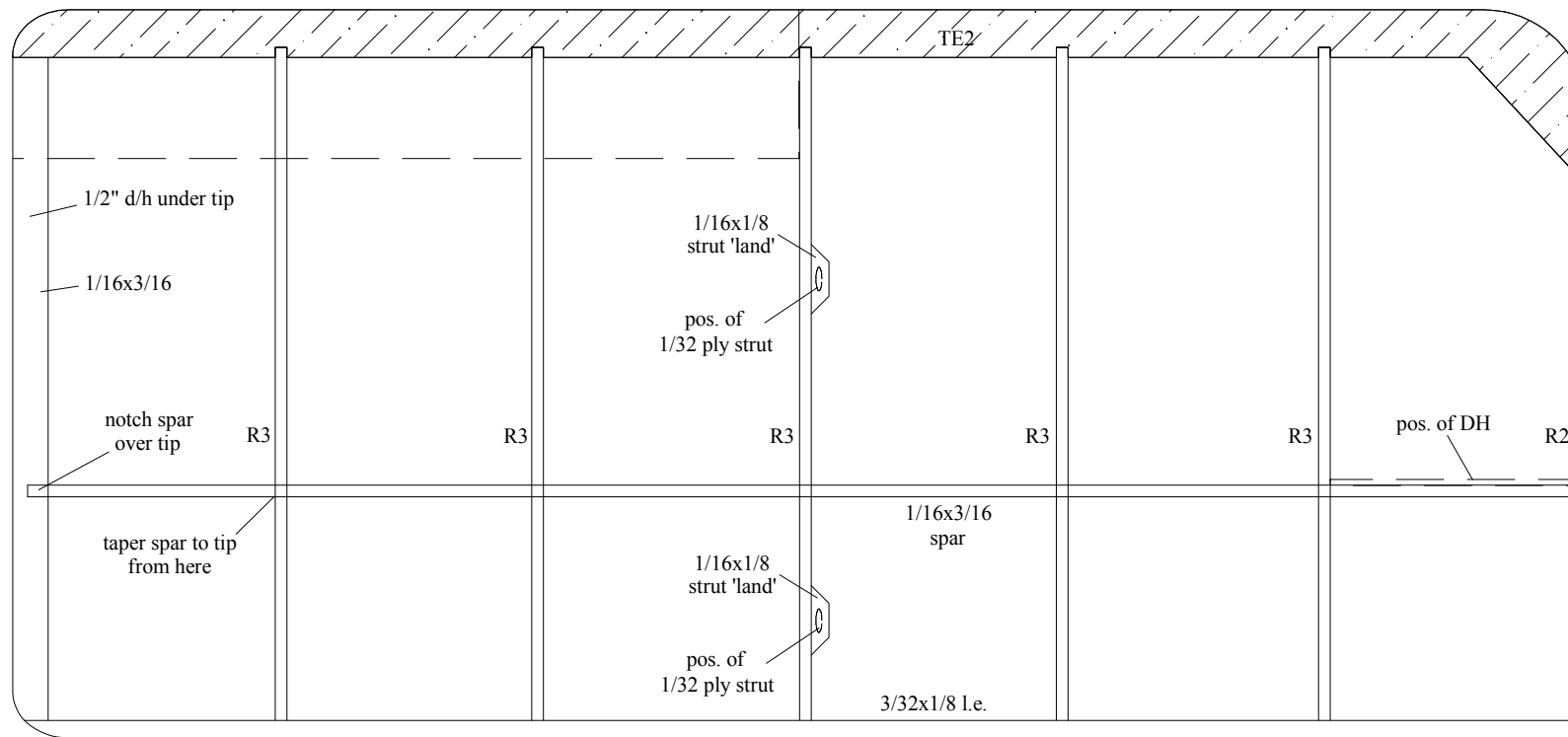
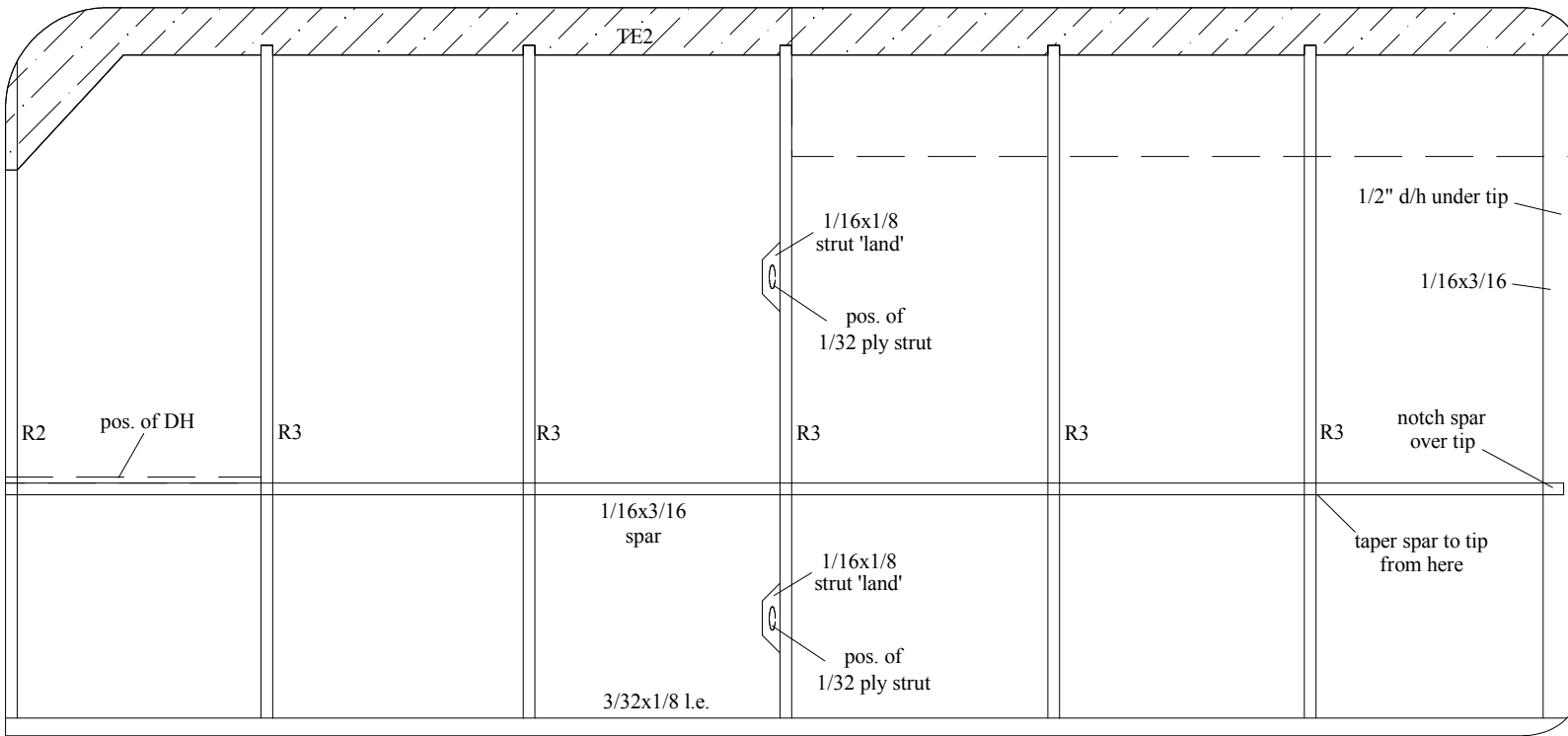
T1 1/16 balsa

T4 1/16 balsa

T3 1/16 balsa

FS 1/16 balsa

PR Designs  
 Sperry  
 Monoplane  
 Copyright P. Rake 2013



use dihedral guide to set angle of root rib

