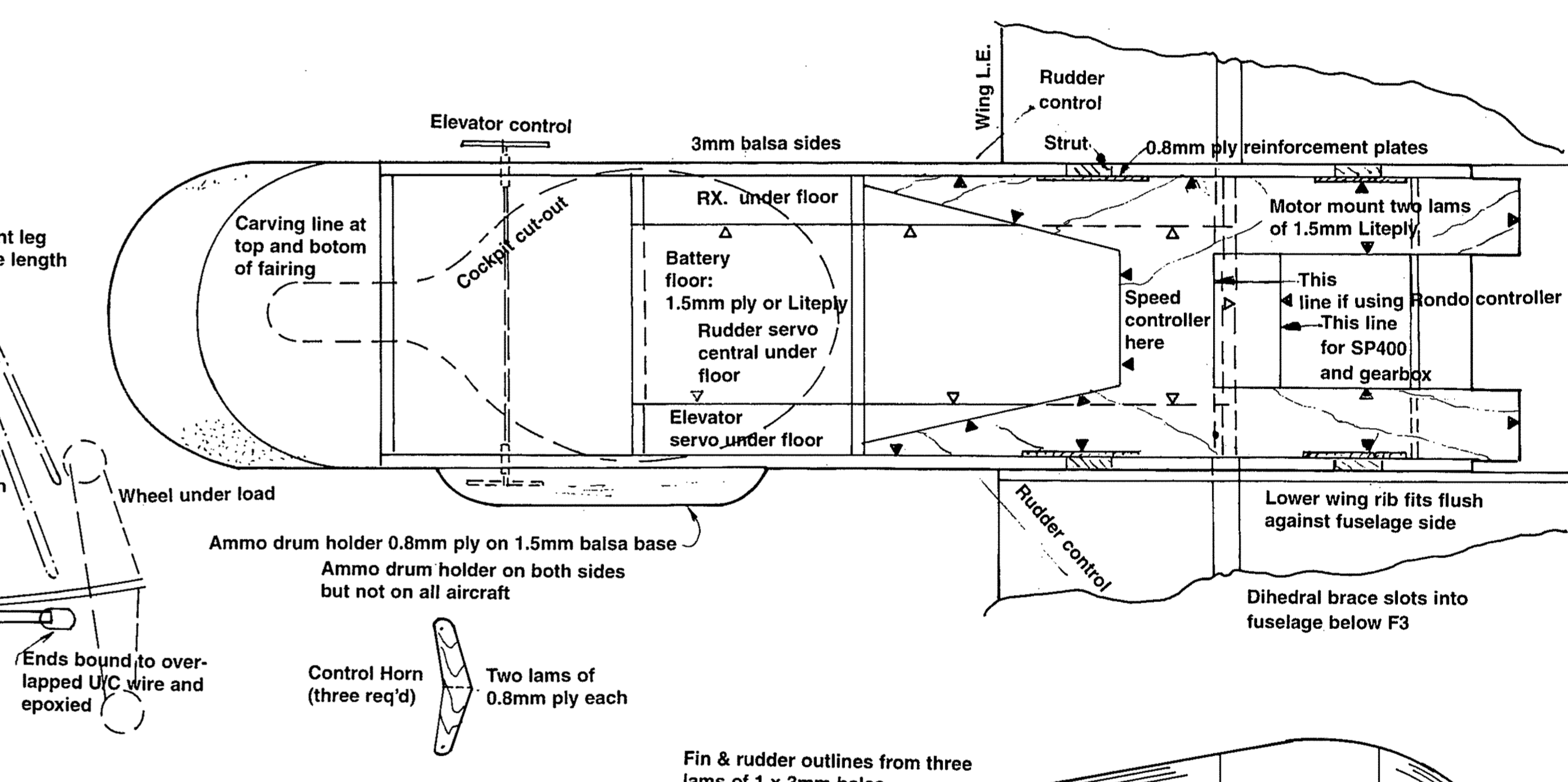
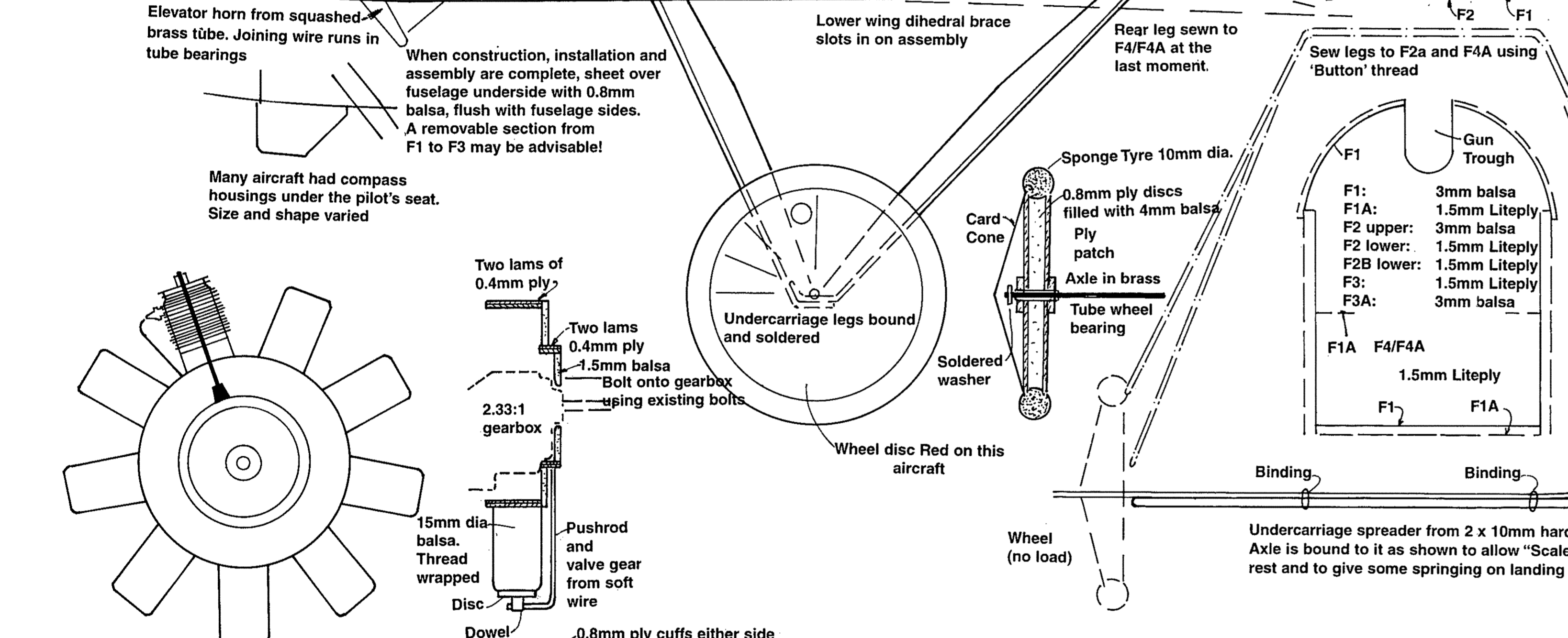
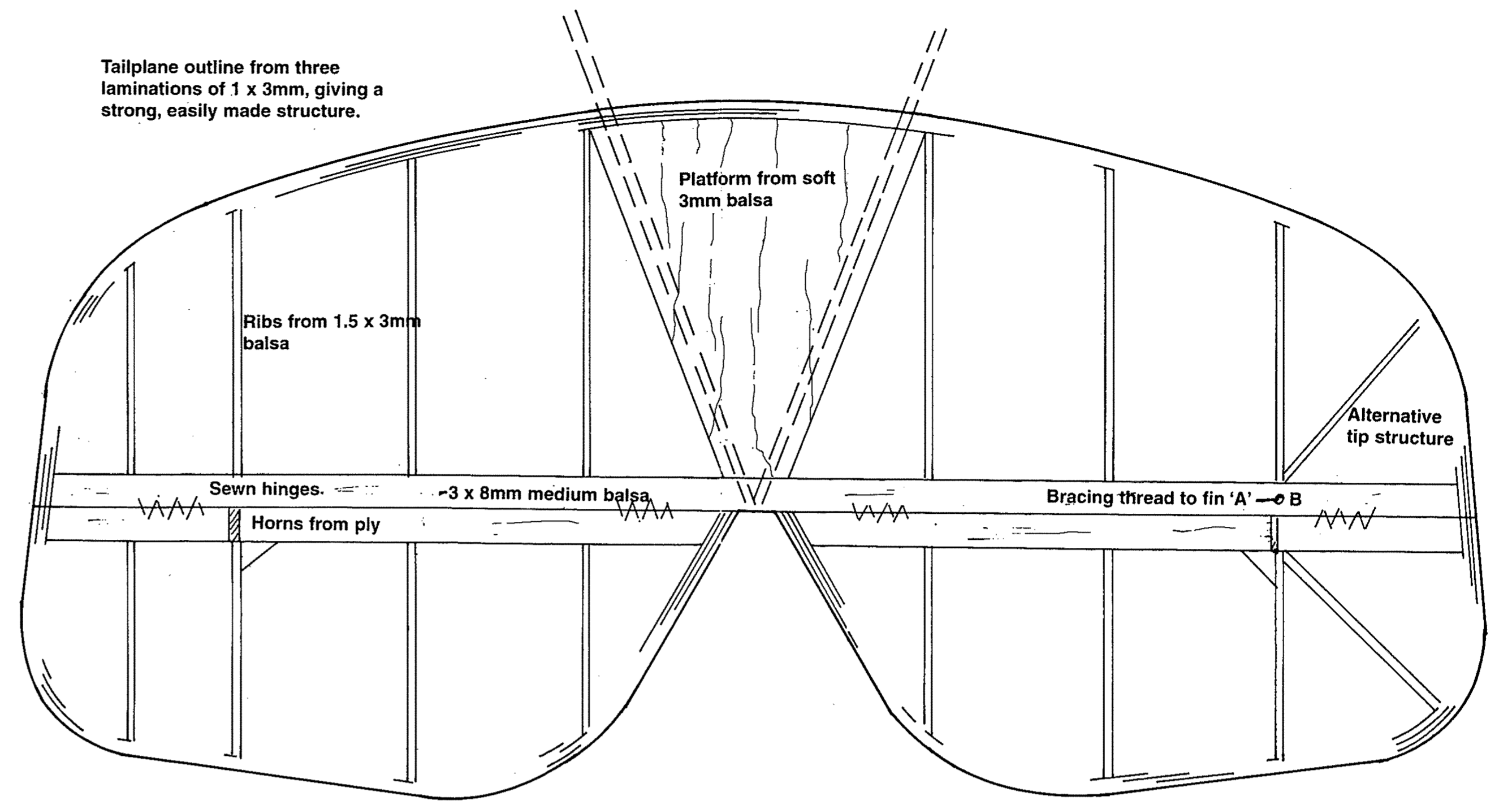
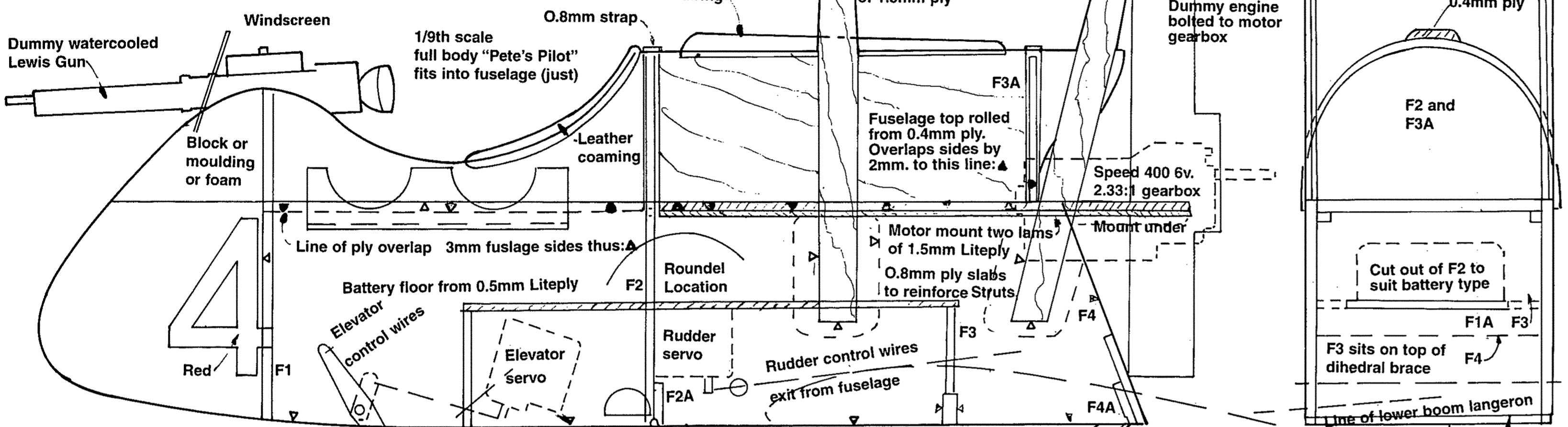


AIRCO DH2

A 38" (990mm) wingspan radio controlled model for rudder, elevator and throttle controls and electric power using a 2.3:1 geared 400 size motor

Designed by
MIKE ROACH



GNOME-MONOSOUPE 9 CYL. ROTARY ENGINE (SEMI-SCALE) TO FIT GRAUPNER SP400 GEARBOX

Make struts from two lams. of 0.8mm ply to exact length shown. This ensures wings are rigged correctly on final assembly

Rear inner struts are butt epoxied to top boom spar and slot partly into lower rib/strut location. (this is the only tricky bit of building)

