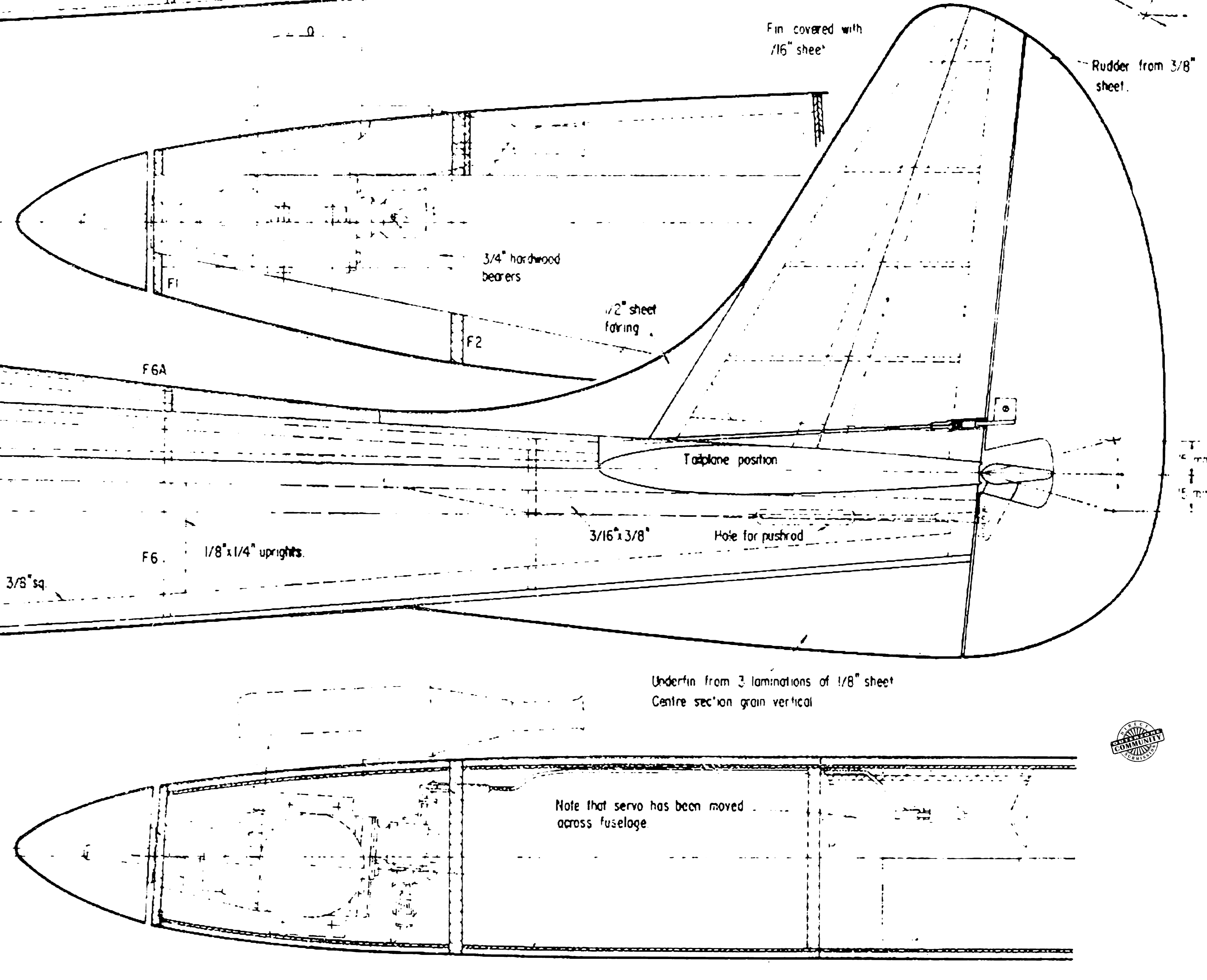
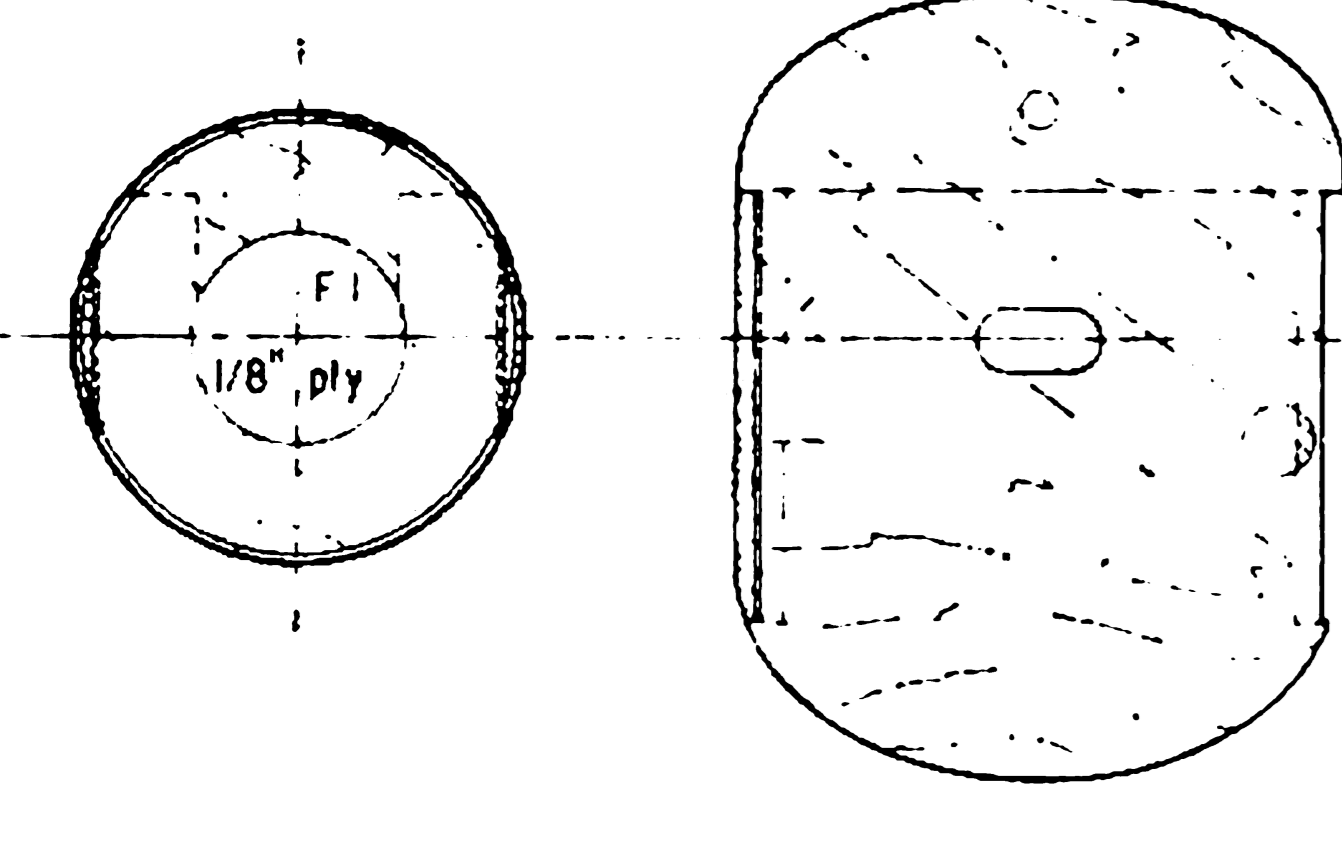
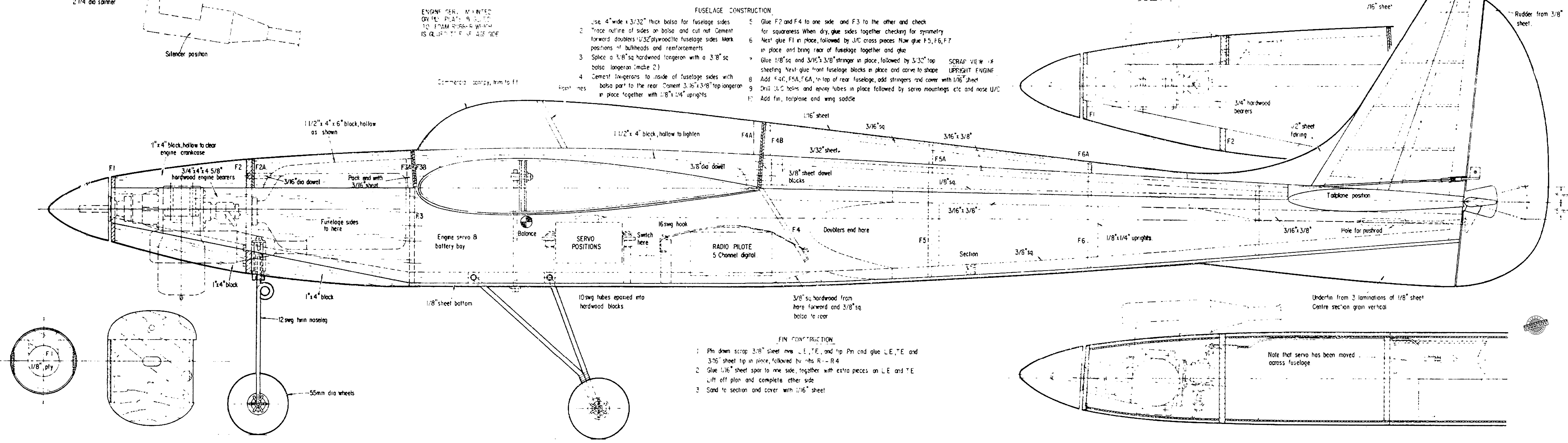


**FUSELAGE CONSTRUCTION**

- Use 4" wide x 3/32" thick balsa for fuselage sides
- Trace outline of sides on balsa and cut out. Cement forward doublers 1/32" plywood to fuselage sides. Mark positions of bulkheads and reinforcements
- Splice a 3/8" sq hardwood longeron with a 3/8" sq balsa longeron (make 2)
- Cement longerons to inside of fuselage sides with balsa part to the rear. Cement 3/16" x 3/8" top longeron in place together with 1/8" x 1/4" uprights
- Glue F2 and F4 to one side and F3 to the other and check for squareness. When dry, glue sides together checking for symmetry
- Next glue F1 in place, followed by U/C cross pieces. Now glue F5, F6, F7 in place and bring rear of fuselage together and glue
- Glue 1/8" sq and 3/16" x 3/8" stringer in place, followed by 3/32" top sheeting. Next glue front fuselage blocks in place and curve to shape
- Add F4C, F5A, F6A, to top of rear fuselage, add stringers and cover with 1/16" sheet
- Drill U/C holes and epoxy tubes in place followed by servo mountings etc and nose U/C
- Add fin, tailplane and wing saddle



THIS PANEL SHOWN WITHOUT SHEETING FOR CLARITY

Tips from 3x1/2" sheet

