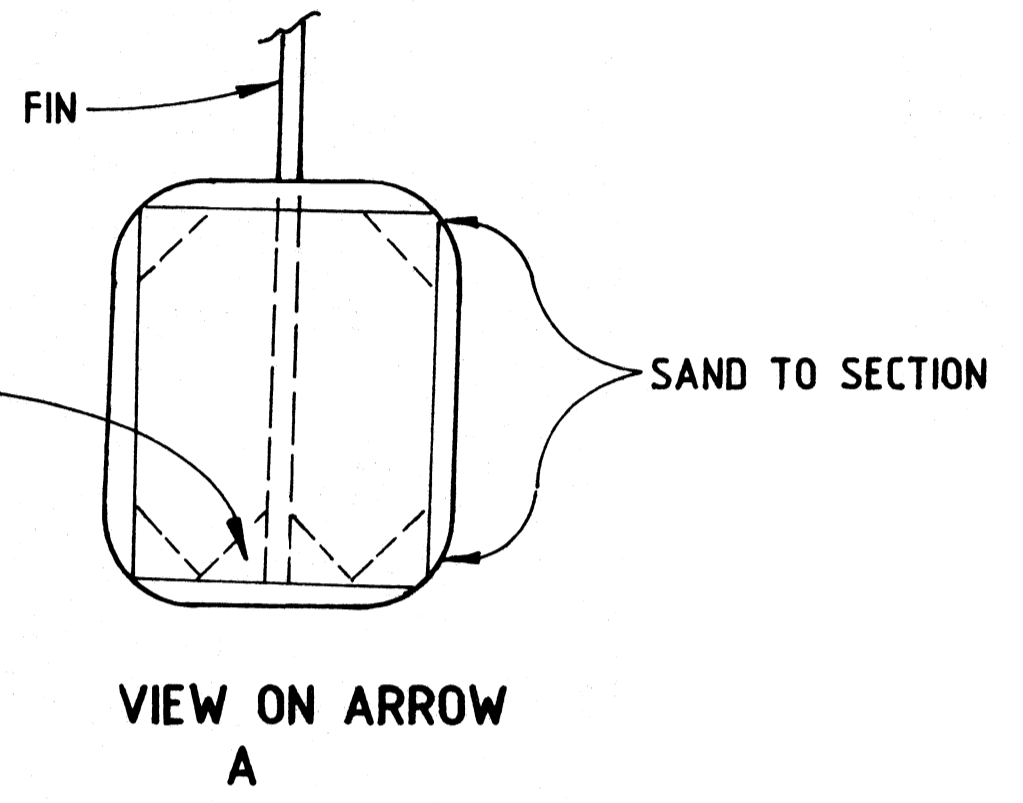
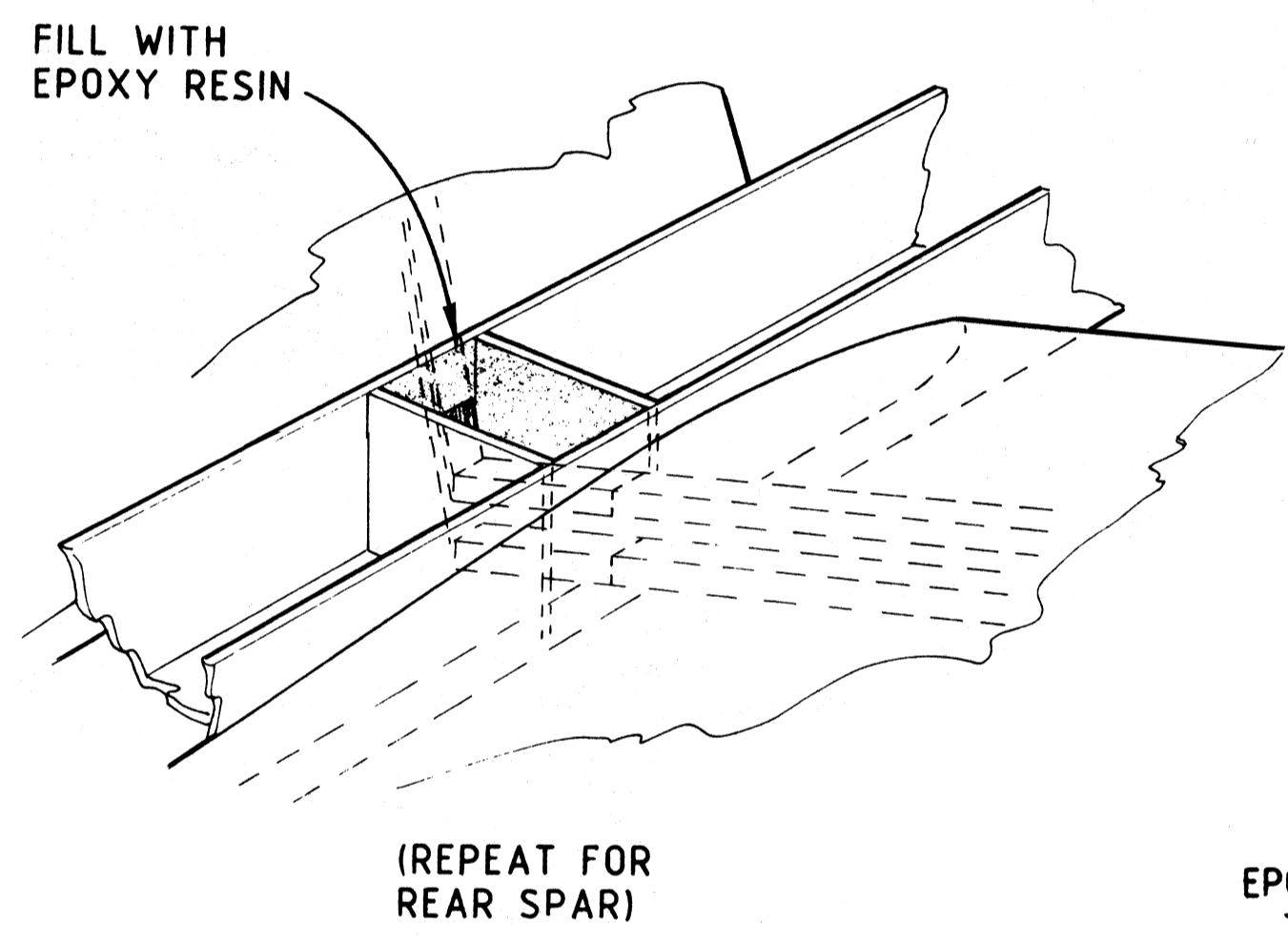


ALL FORMERS 1/8" HARD Balsa



FUSELAGE SIDES FROM MEDIUM/HARD 1/8" Balsa SHEET

1/8" CROSS GRAIN LIGHT Balsa

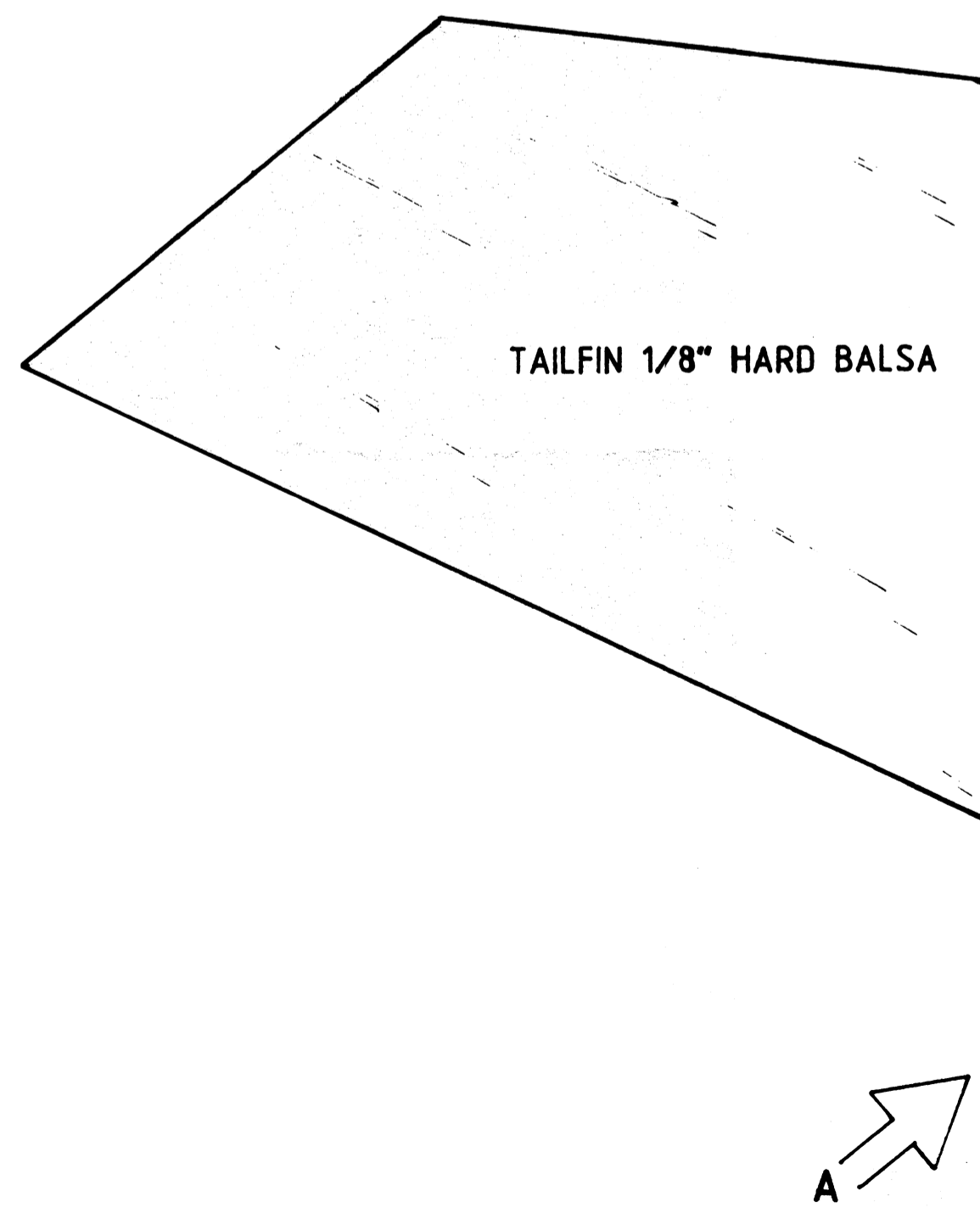
10m.m. TRIANGULAR SECTION

EPOXY RESIN INFILL AFTER FITTING WINGS TO SECURE WINGSPARS

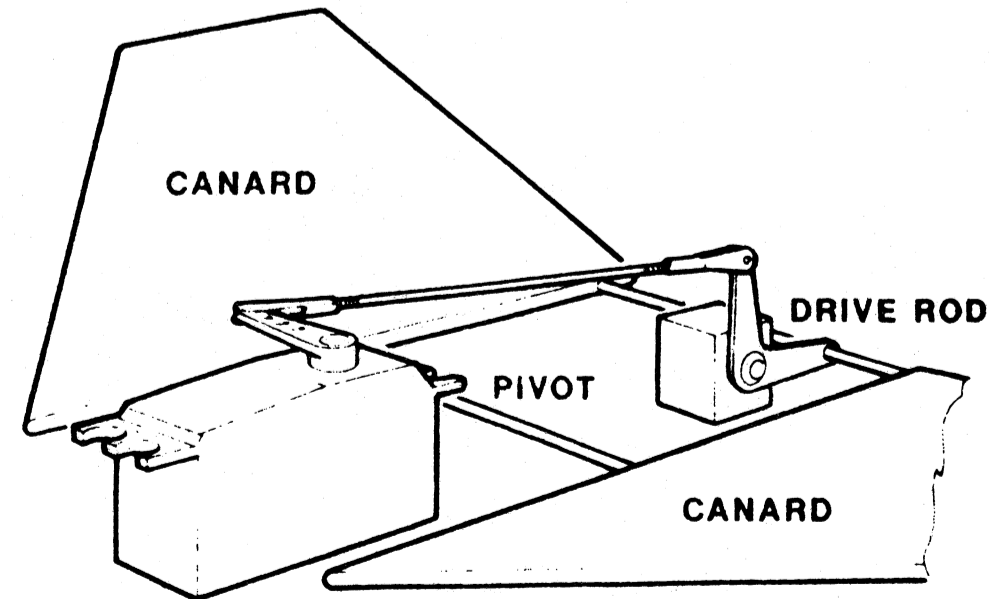
10m.m. TRIANGULAR SECTION

1/8" CROSS GRAIN LIGHT Balsa

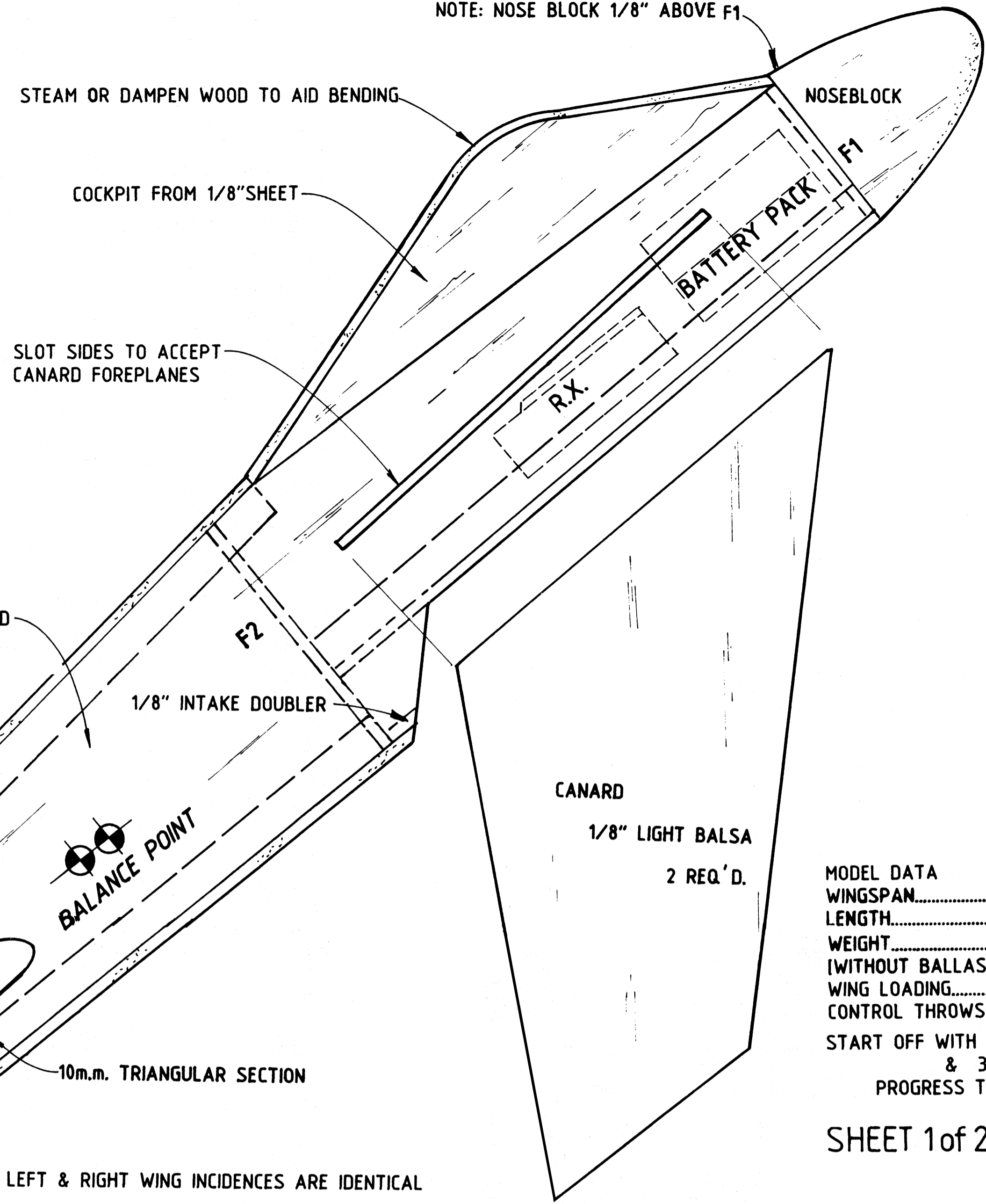
CUT OUT IN SIDES FOR WING SPARS



1/8" SHEET SPAR BOX FRONT & REAR FULL FUSELAGE WIDTH



DETAIL OF OPTIONAL MOVING CANARD LINKAGES



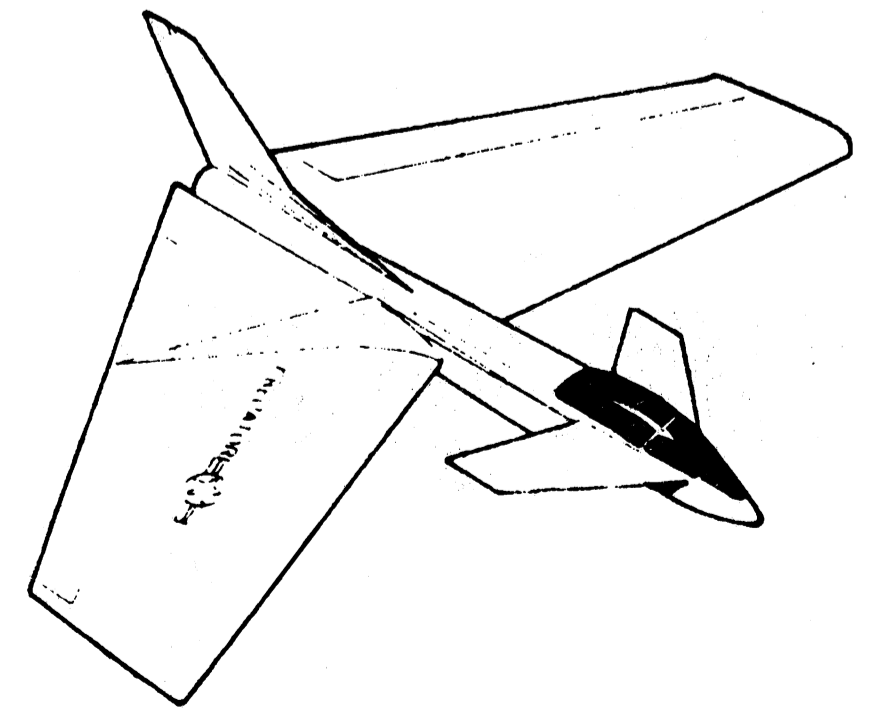
MODEL DATA

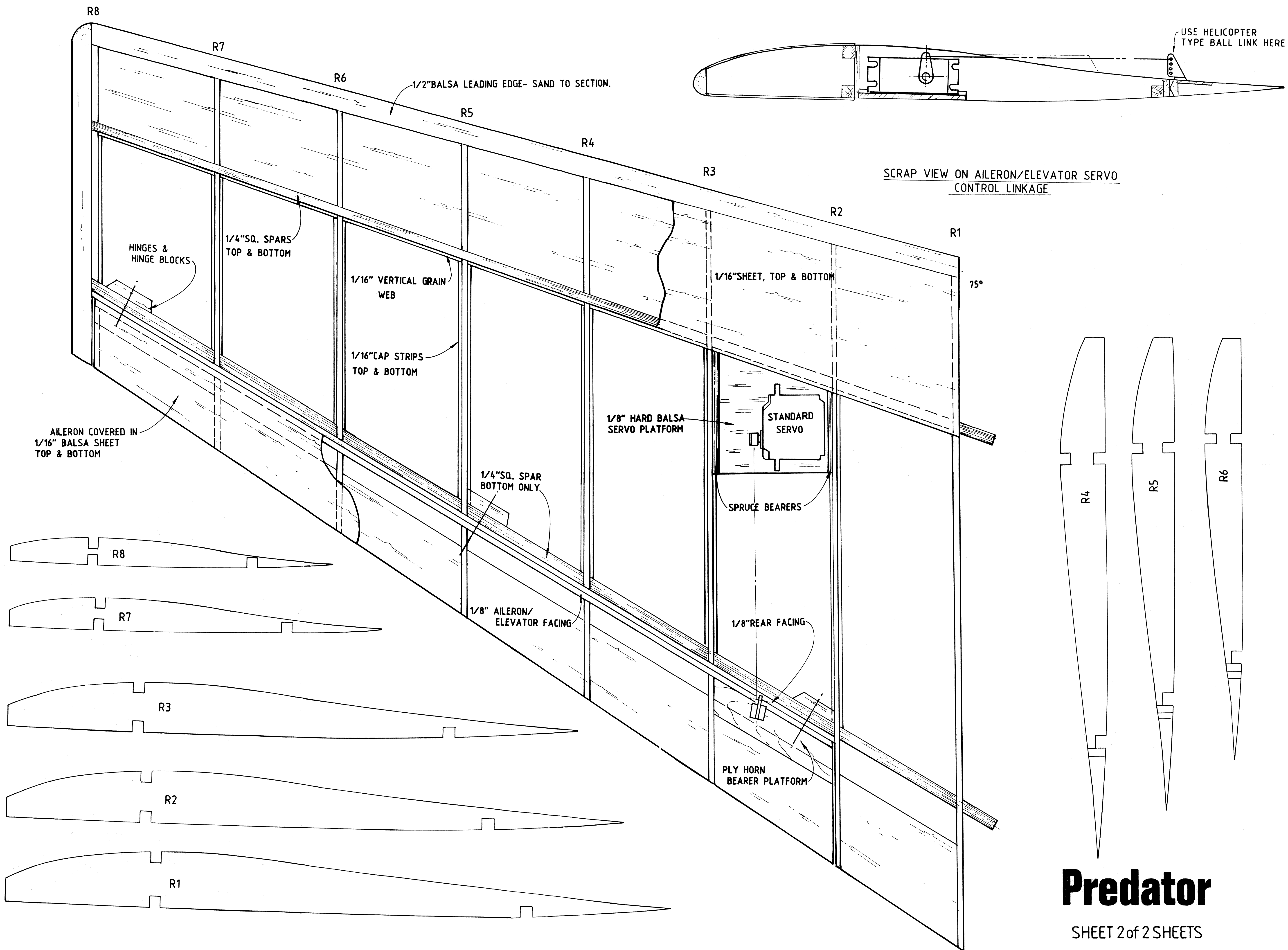
WINGSPAN	43.5"
LENGTH	33"
WEIGHT [WITHOUT BALLAST]	.2lb.
WING LOADING	APPROX 9oz/sq.ft.
CONTROL THROWS	
START OFF WITH 1/2" E/W ONAILERONS & 3/8" E/W FOR ELEV. PROGRESS TO 1" E/W ONAILERONS.	

SHEET 1 of 2 SHEETS

Predator

Forward Swept Wing slope soarer





Predator