

# PEPPER SPROUT

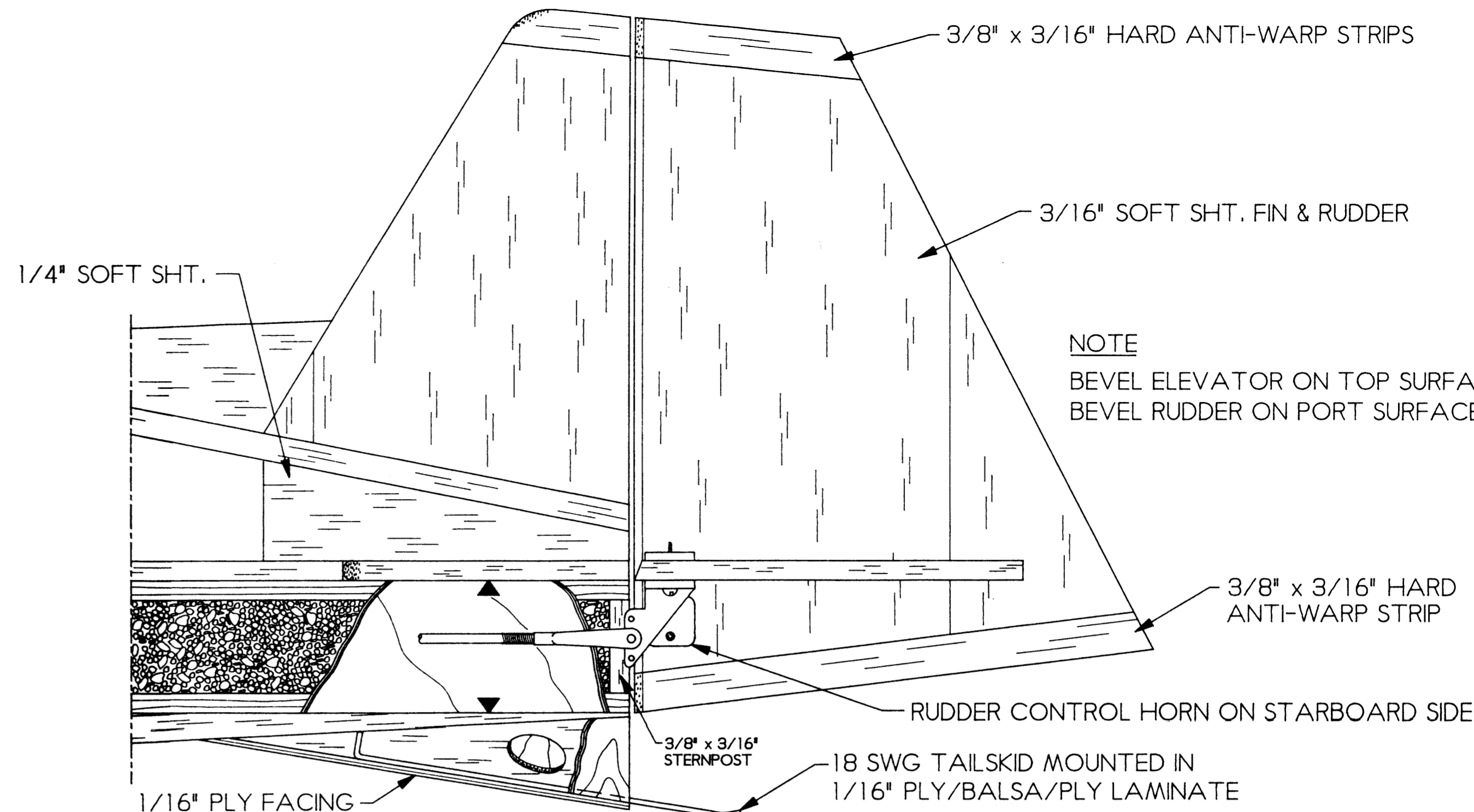
DESIGNED BY  
**MIKE WHITE**

© NEXUS SPECIAL INTERESTS LTD,  
NEXUS HOUSE,  
BOUNDARY WAY,  
HEMEL HEMPSTEAD,  
HERTFORDSHIRE,  
HP2 7ST  
UNITED KINGDOM  
TEL. 01442 66551  
FAX 01442 66998

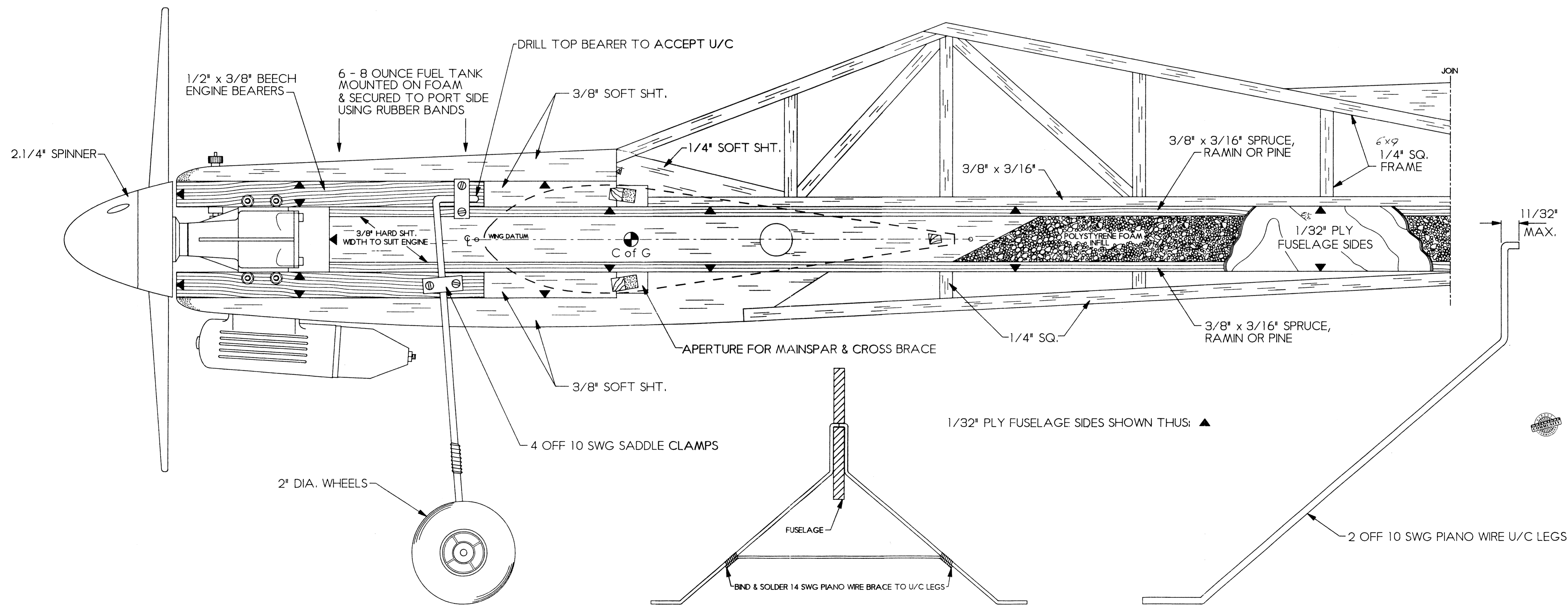
A 36" WINGSPAN PROFILE FUN FLY MODEL FOR 4 FUNCTION R/C  
& .15 - .25 cu.in. ENGINES.

**NOTES**

1. ALL WOOD IS Balsa UNLESS OTHERWISE STATED.
2. CONTROL THROWS:  
RUDDER ± 2".  
ELEVATOR ± 2" (HIGH RATES) ± 1.1/2" (LOW RATES).  
AILERONS ± 1.1/2" (HIGH RATES) ± 3/4" (LOW RATES).
3. ALL UP WEIGHT = 42 OUNCES.
4. CONTROL SURFACES HINGED FULL LENGTH USING SOLARFILM.



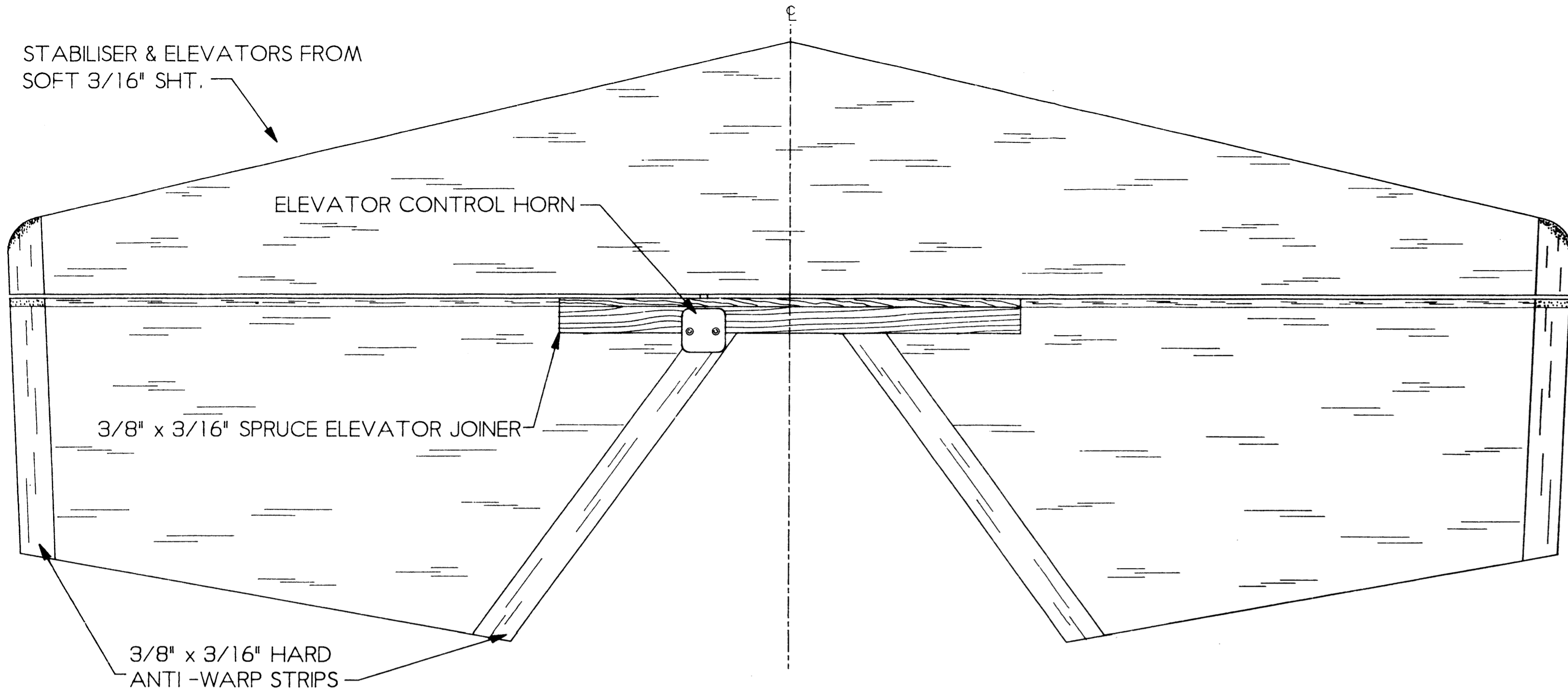
CUT LINE



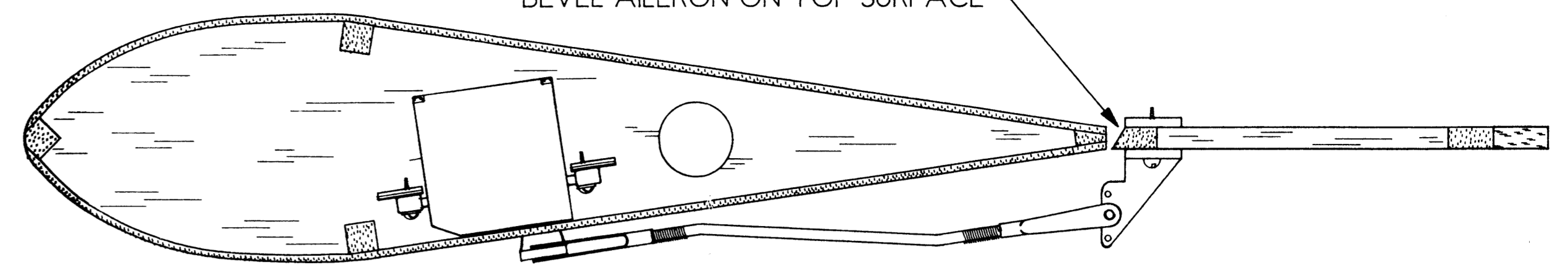
1/32" PLY FUSELAGE SIDES SHOWN THUS: ▲

SCRAP SECTION DETAILING U/C INSTALLATION  
SCALE 1:2

STABILISER & ELEVATORS FROM  
SOFT 3/16" SHT.

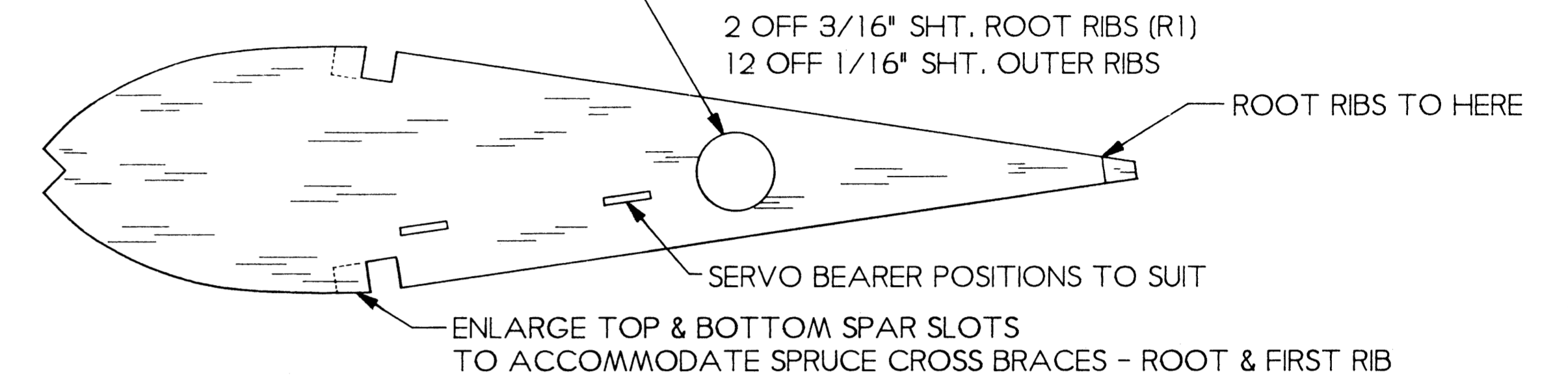


BEVEL AILERON ON TOP SURFACE



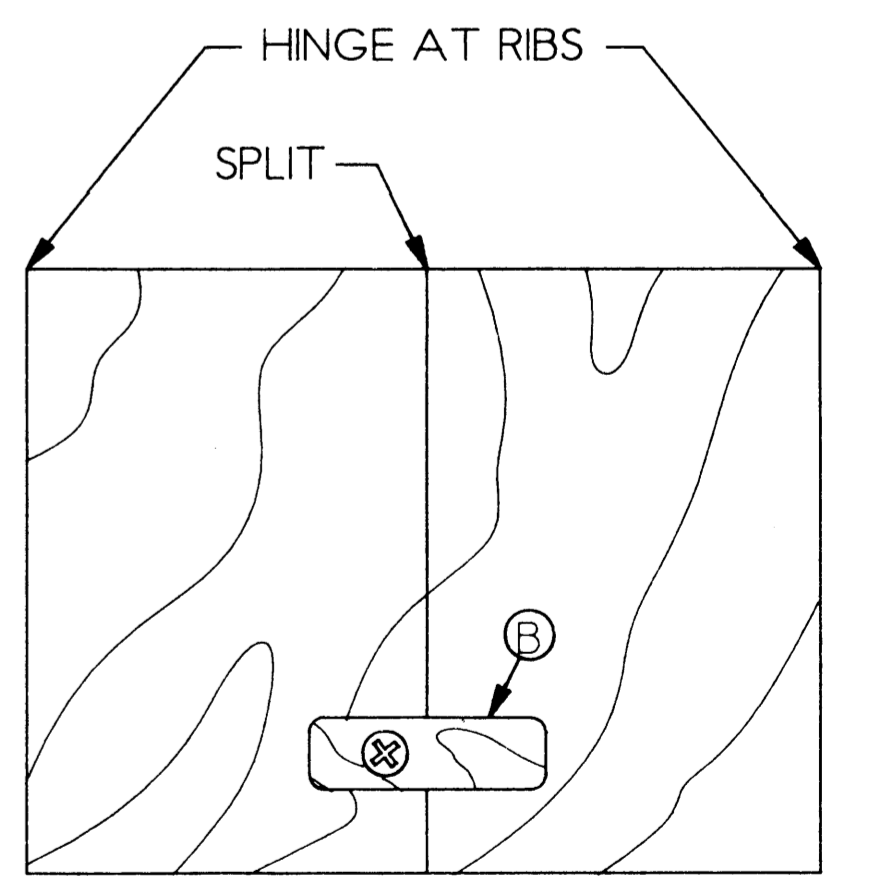
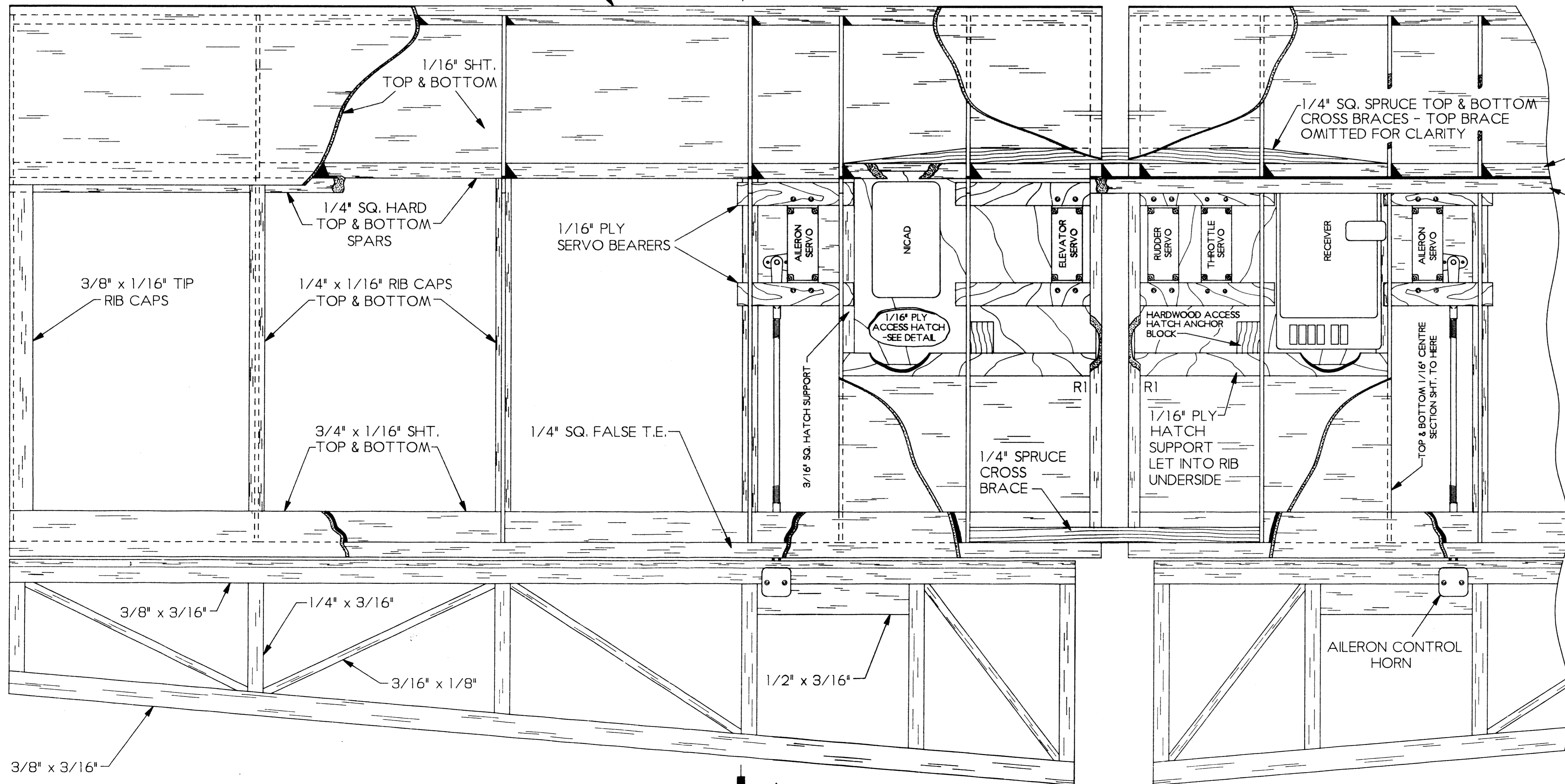
SECTION A-A

ACCESS HOLE FOR  
SERVO/NICAD LEADS



1/4" SQ. L.E.

A



1/16" PLY ACCESS HATCH - 2 OFF  
SPLIT DOWN RIB CENTRE LINE.  
GLUE 1/16" PLY HOLD DOWN (B) TO ONE SIDE & SECURE OTHER SIDE TO WING ANCHOR BLOCK WITH A SELF TAPPING SCREW. HINGE AT RIBS WITH SOLARFILM.  
(NOTE: DETAIL VIEWED FROM UNDERSIDE).