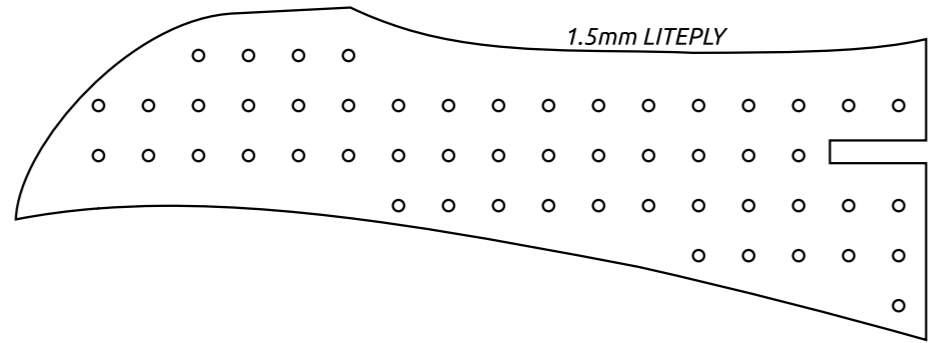
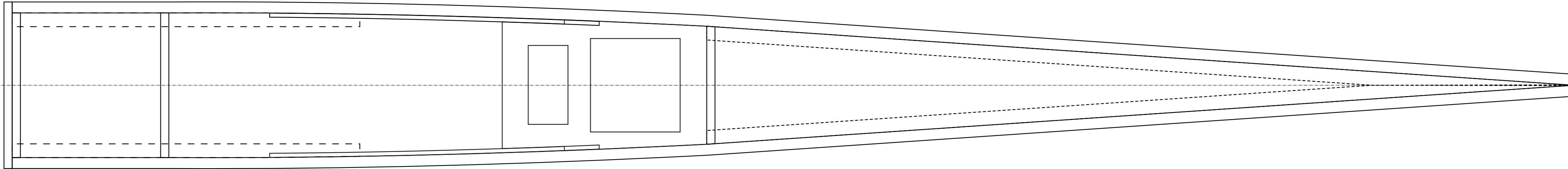
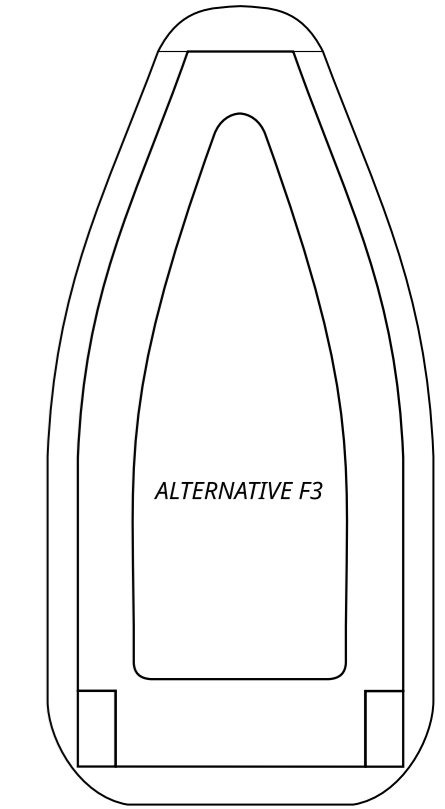
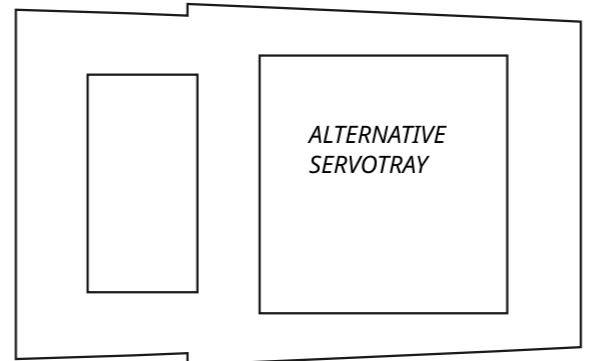




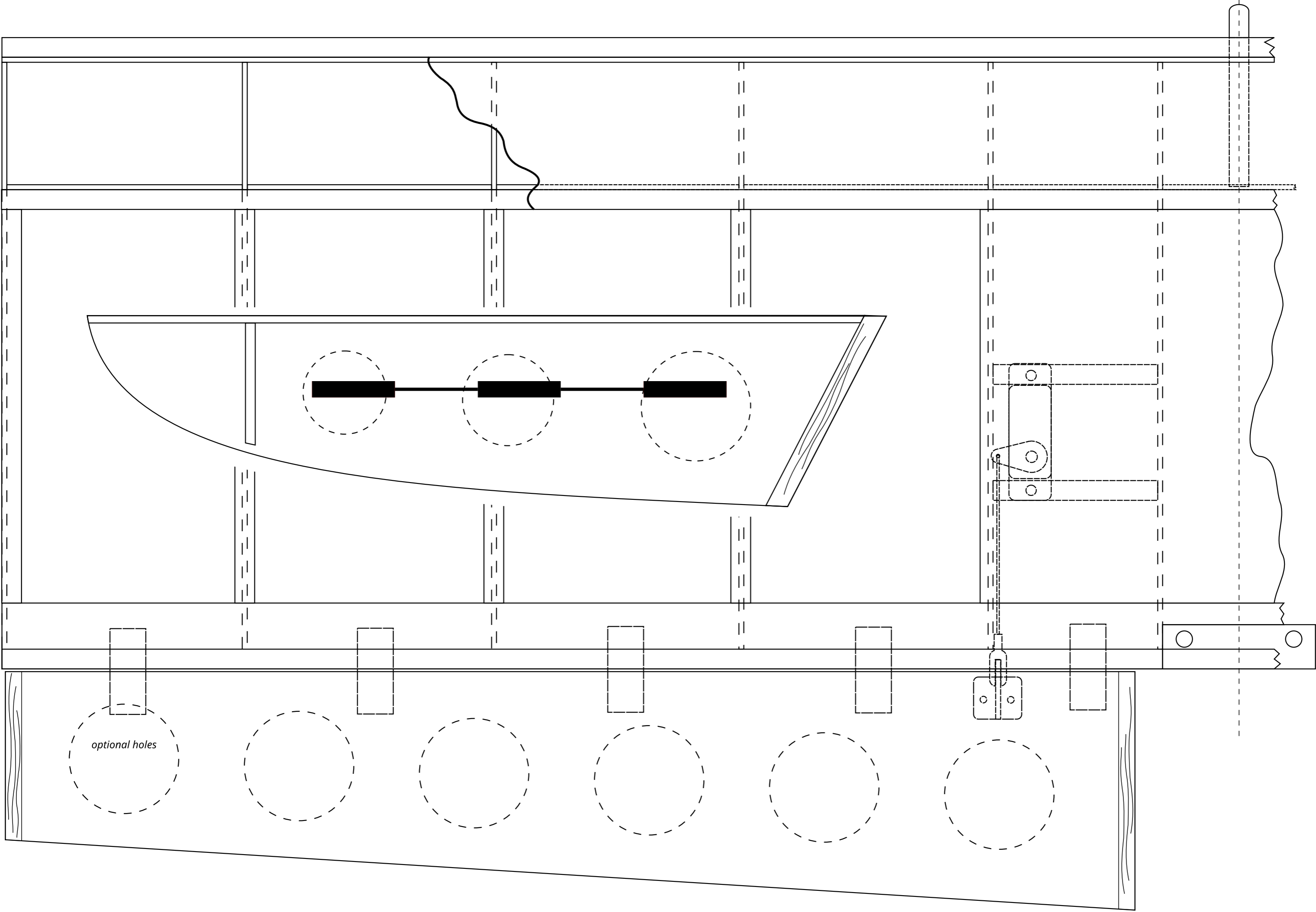
A GOOD FIT BETWEEN WING AND FUSELAGE WOULD MEAN  
F2 DOESN'T ENDURE AERONAUTICAL FORCES; ONLY 1 WOULD SUFFICE  
INSTEAD A FUSELAGE DOUBLER BETWEEN COCKPIT AND WING IS RECOMMENDED



HOLES IN DOUBLER SHOULD MAKE BEND EASIER  
A THRU 'N THRU GLUE JOINT IS VERY STRONG



ALTERNATIVE F3 HAS REDUCED WIDTH  
FUSE AFTER F3 IS STRAIGHT; FUSE BEND  
IS BETWEEN F2 & F3



0"

5" (127mm)



DRAWN IN **INKSCAPE 1.2**  
SELECT INDIVIDUAL PARTS AND DRAG TO PRINTING AREA PAGE 1

