

JEAN MACHINE

designed by
Mike White
copyright of

RCM&E Plans Service

BOX 38 WOLSEY ROAD, HEMEL HEMPSTEAD, HERTS. HP2 4SS.



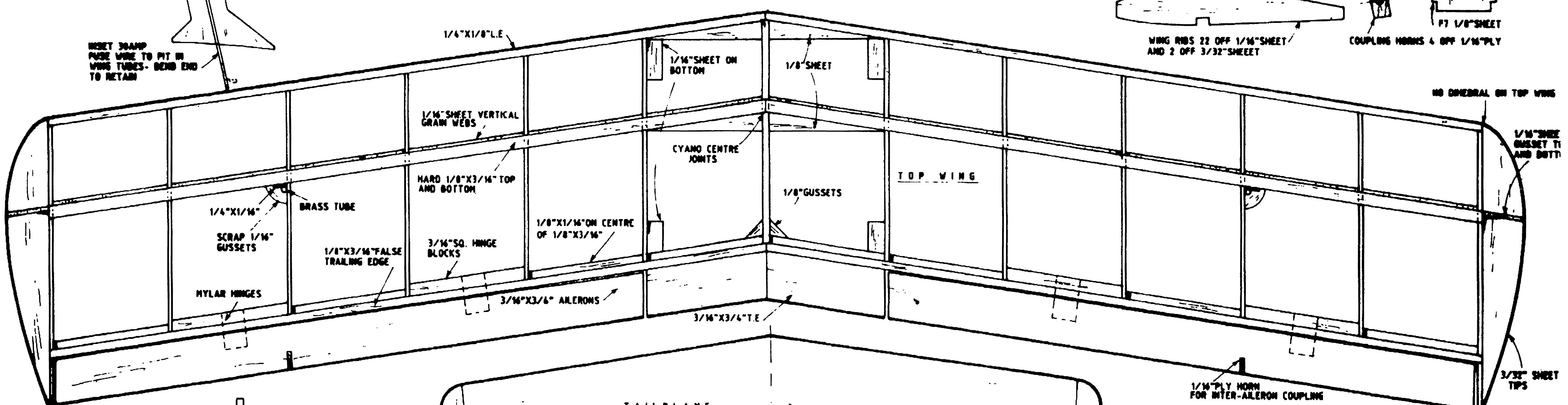
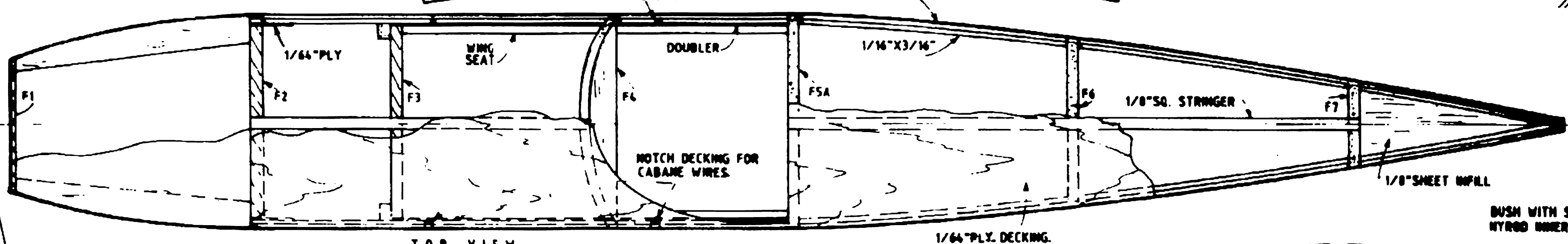
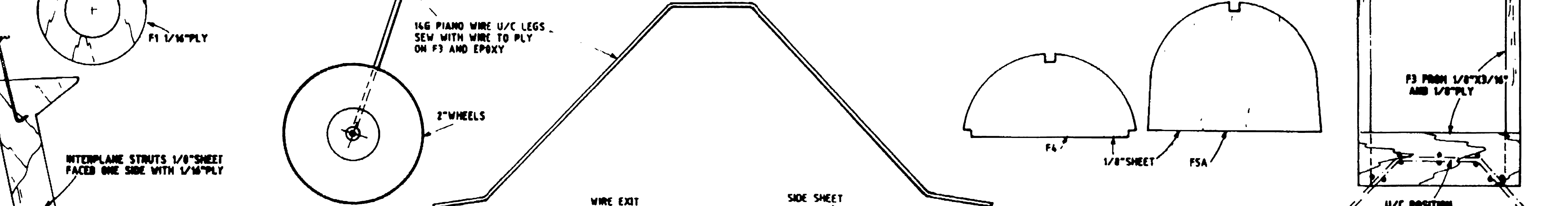
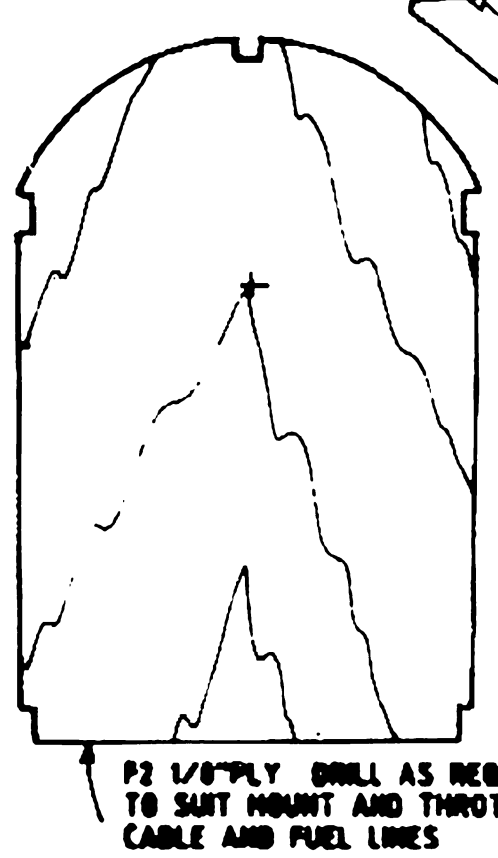
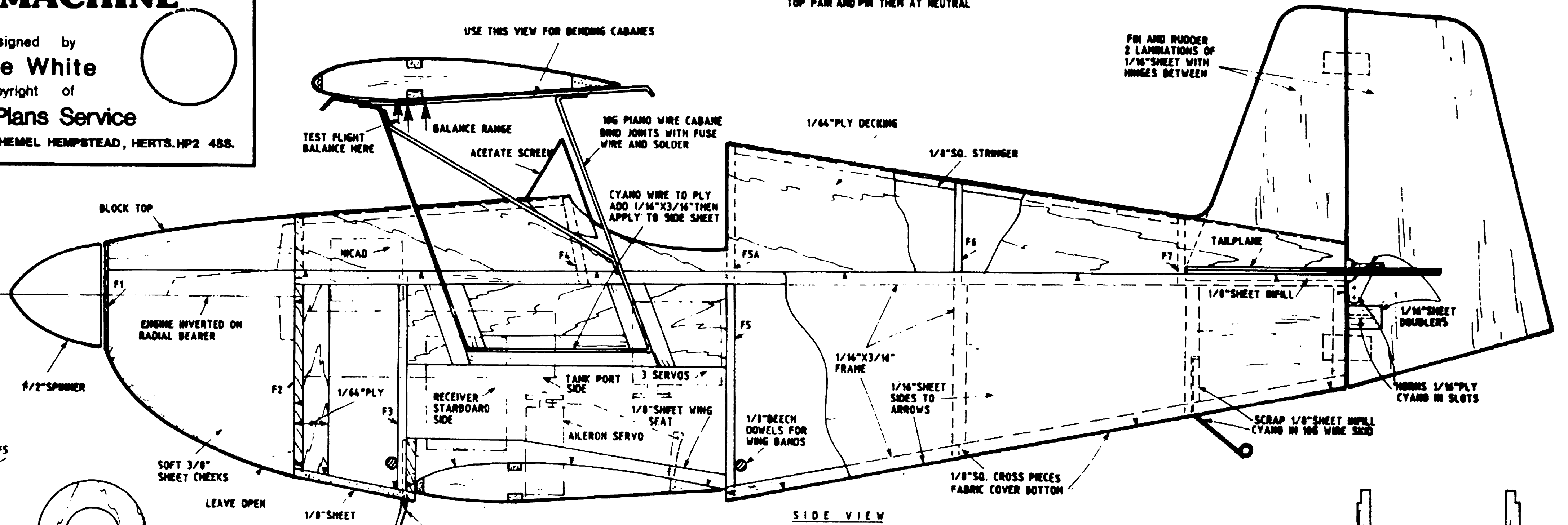
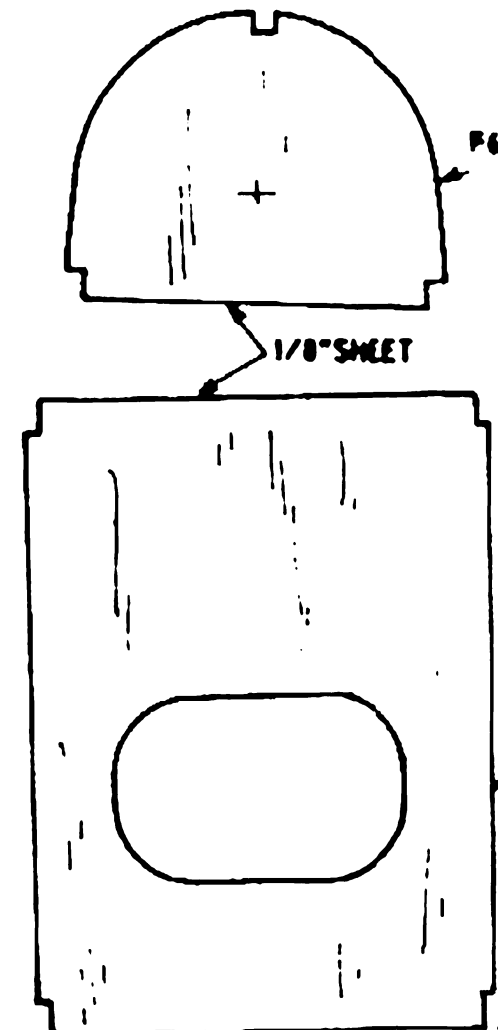
ALL WOODS ARE MEDIUM BALSA UNLESS OTHERWISE STATED

IT IS SUGGESTED THAT TRIMMING FLIGHTS ARE MADE USING BOTTOM ALERONS - UNCOUPLE THE TOP PAIR AND PIN THEM AT NEUTRAL

USE THIS VIEW FOR BENDING CABANES

FIN AND RUDDER 2 LAMINATIONS OF 1/16" SHEET WITH HINGES BETWEEN

FOR EXPERIENCED PILOTS ONLY



TANK MADE FROM 1/32" PLY JOIN WITH CYANO/BAKING SODA, FUEL PROOF WITH CYANO AND USE SAME TO FIT PIPES. BOND BUSHING CLUNK TUBE TO BRASS TUBES WITH COTTON AND CYANO, THEN FIT FRONT END

