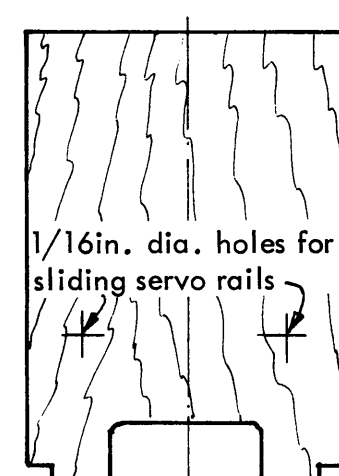
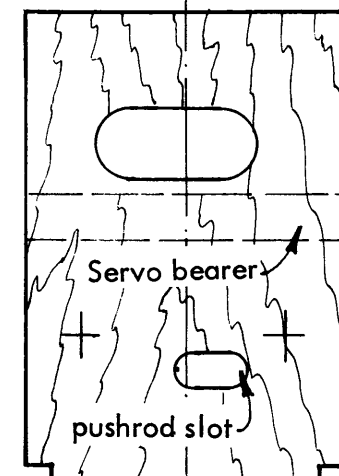
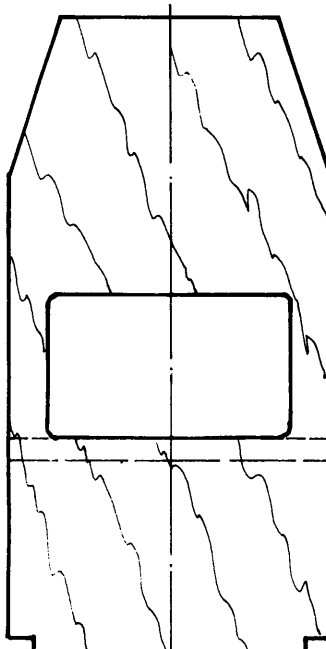
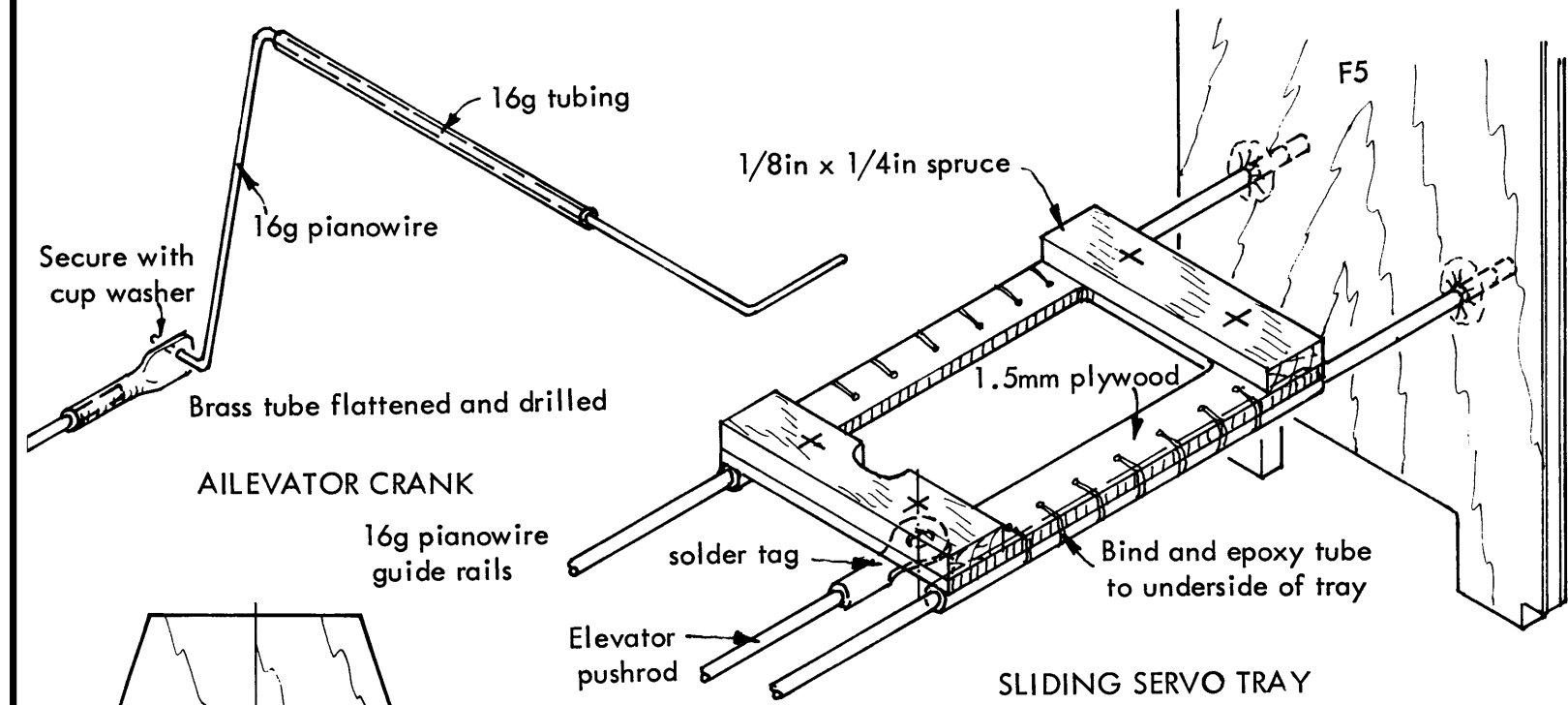


# Elf-16

28 inch wing span semi-scale jet fighter  
for .049 engines and two function mini radio control

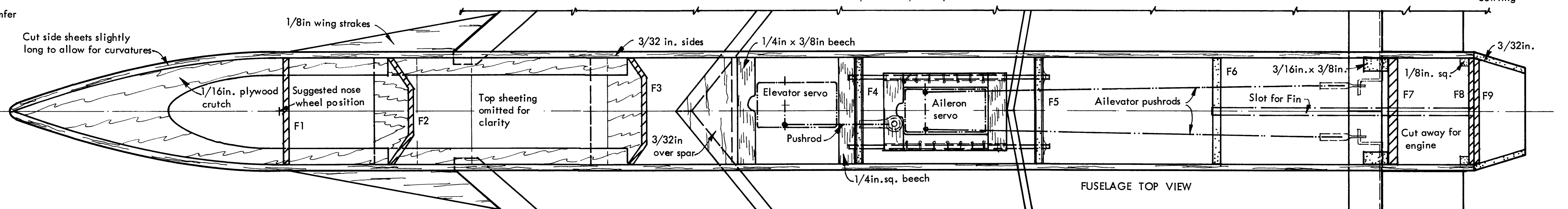
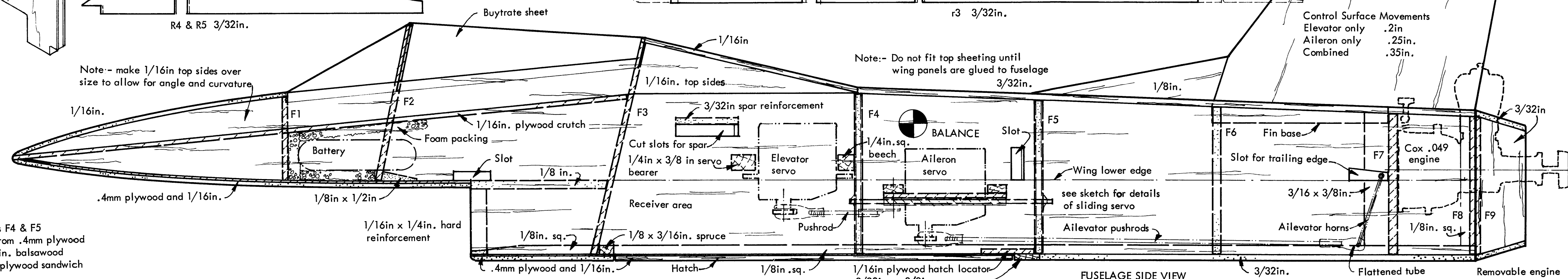
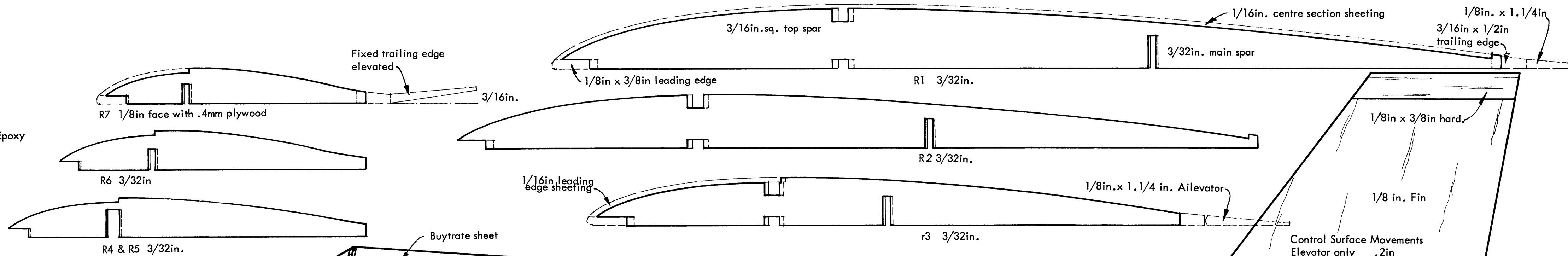


Formers F4 & F5 make from .4mm plywood - 3/32in. balsawood - 4mm plywood sandwich

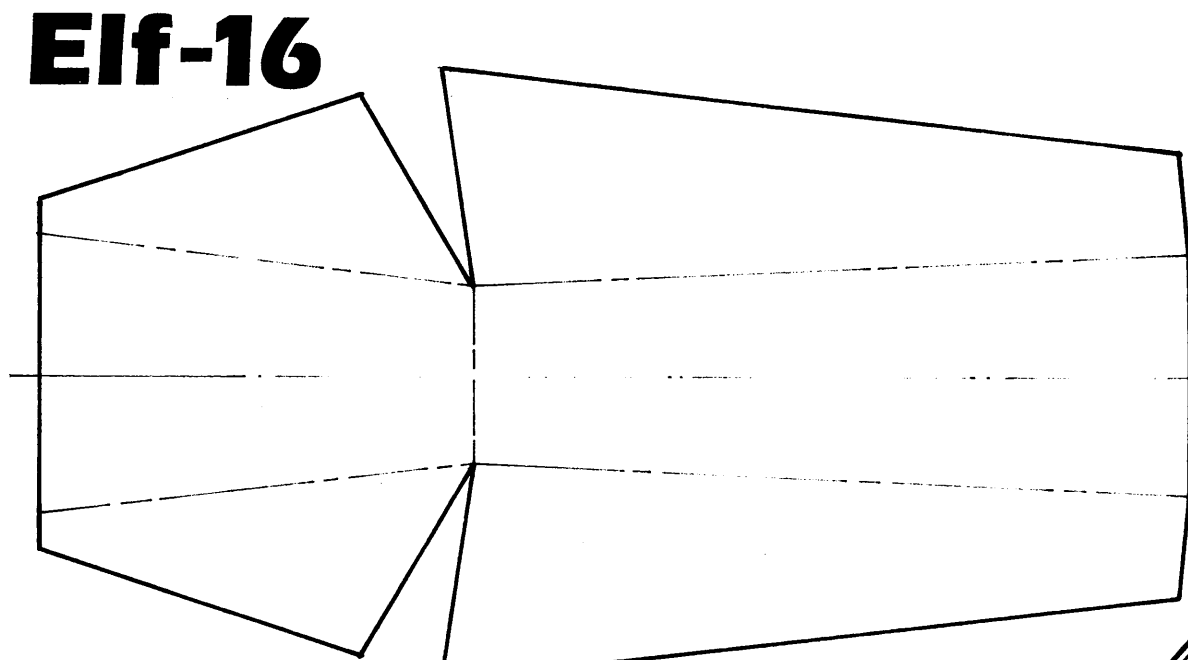
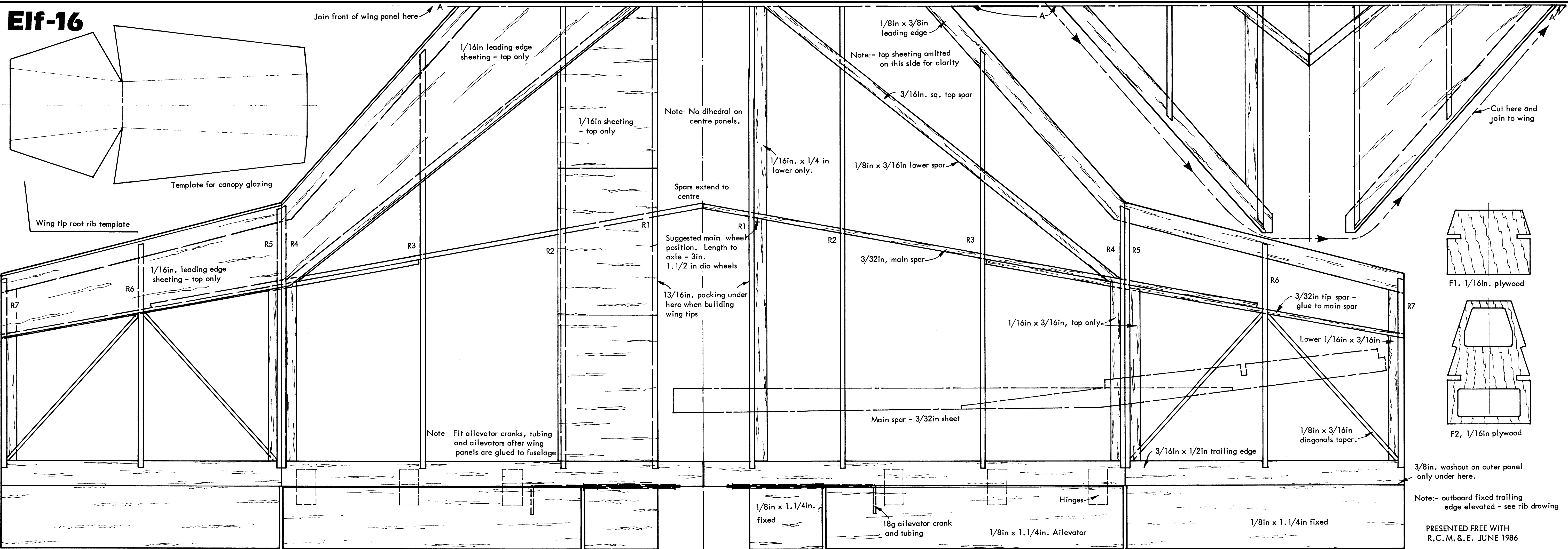
F9 chamfer



F8 & 9 1/16in. plywood



# Elf-16



Template for canopy glazing

Wing tip root rib template

Join front of wing panel here

1/16in leading edge sheeting - top only

1/16in sheeting - top only

Note: No dihedral on centre panels.

1/16in. x 1/4 in lower only.

Note:- top sheeting omitted on this side for clarity

3/16in. sq. top spar

1/8in x 3/16in lower spar

Cut here and join to wing

1/16in. leading edge sheeting - top only

Spars extend to centre

Suggested main wheel position. Length to axle - 3in. 1.1/2 in dia wheels

13/16in. packing under here when building wing tips

3/32in. main spar

1/16in x 3/16in, top only

3/32in tip spar - glue to main spar

Lower 1/16in x 3/16in

F1, 1/16in. plywood

F2, 1/16in plywood

Note: Fit aileron cranks, tubing and ailerons after wing panels are glued to fuselage

Main spar - 3/32in sheet

1/8in x 3/16in diagonals taper.

3/8in. washout on outer panel only under here.

Note:- outboard fixed trailing edge elevated - see rib drawing

1/8in x 1.1/4in. fixed

18g aileron crank and tubing

Hinges

1/8in x 1.1/4in. Aileron

1/8in x 1.1/4in fixed

PRESENTED FREE WITH R.C.M. & E. JUNE 1986