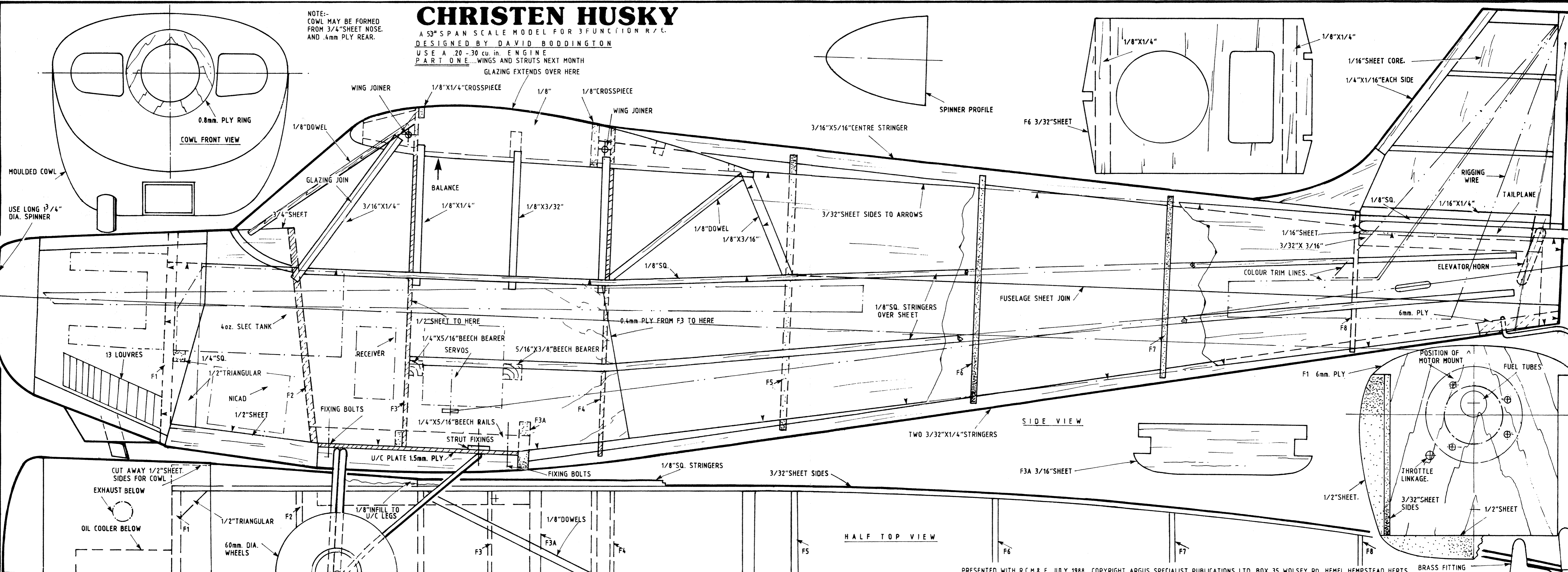


CHRISTEN HUSKY

A 53" SPAN SCALE MODEL FOR 3 FUNCTION R/C.
DESIGNED BY DAVID BODDINGTON
USE A .20-.30 cu. in. ENGINE
PART ONE...WINGS AND STRUTS NEXT MONTH

NOTE:-
COWL MAY BE FORMED
FROM 3/4" SHEET NOSE
AND .4mm PLY REAR.

GLAZING EXTENDS OVER HERE



CHRISTEN HUSKY

BY DAVID BODDINGTON

WING CONSTRUCTION
SEE OTHER SIDE

WING RIBS
6 OFF 3/32" SHEET
30 OFF 1/16" SHEET

SECTION AT TIP BLOCK

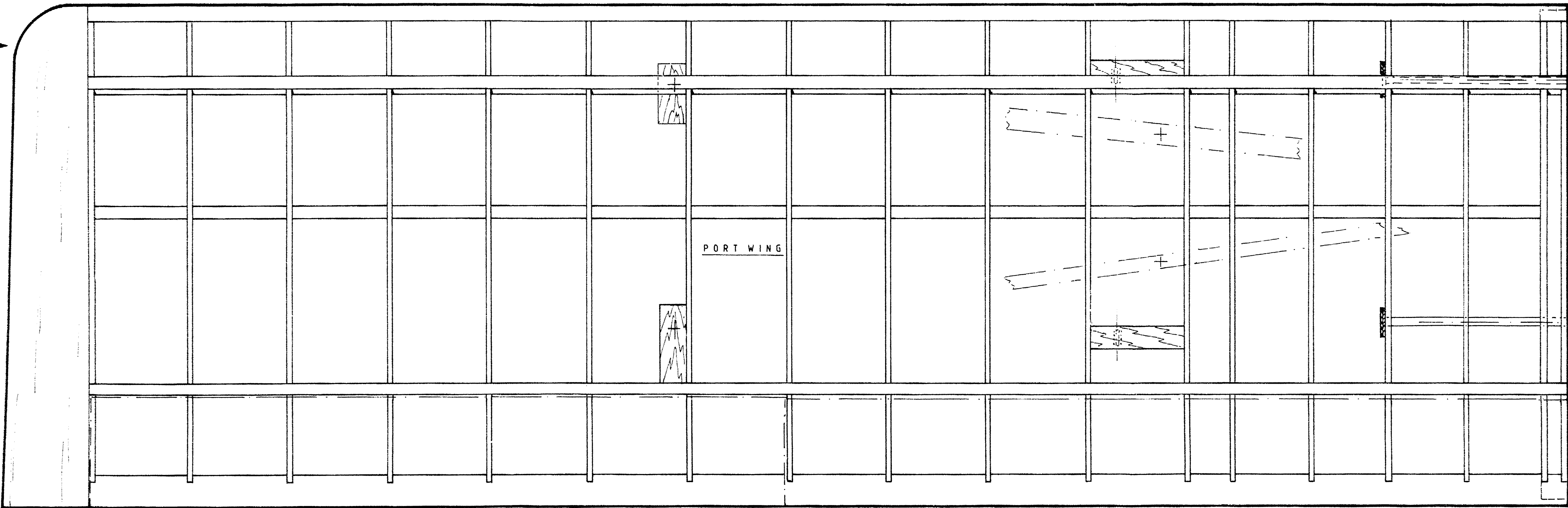
18G TUBES BOUND
TO 1.5mm PLY

SLEEVE WITH
18G ALI TUBE

JURY STRUTS

2X20G

EPOXY INTO STRUTS



CHRISTEN HUSKY

BY DAVID BODDINGTON
PART TWO - PART ONE IN JULY 1988 ISSUE

