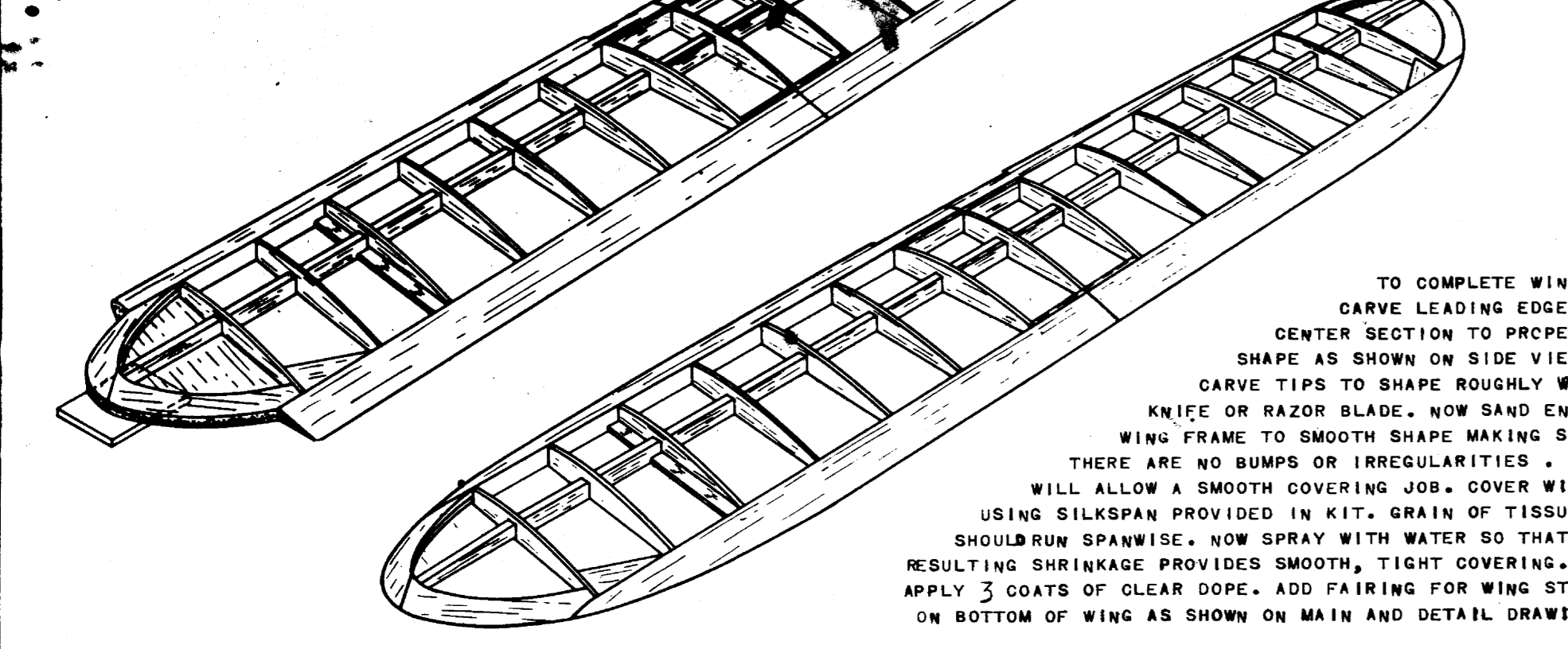


**WING INSTRUCTION NOTES**

APPLY COAT OF CEMENT TO ENDS OF LEADING AND TRAILING EDGES AND SPAR WHERE THEY JOIN IN CENTER OF WING AND ALLOW TO DRY. NOW GLUE SAME SPOTS AND JOIN TOGETHER OVER LAYER OF CEMENT. USE 1/16" Balsa for WING TIP. FLOOR W-1 IS PLACED AND RAISED INTO POSITION BY 3/16" Balsa AS SHOWN. CEMENT TIP PIECES TOGETHER TO COMPLETE TIP. ADD CEMENT TO W-1. NOW ADD W-2 TO COMPLETE TIP. ADD CEMENT TO W-2. CAREFULLY MARK OFF LEADING EDGE SECTION TO BE CUT AWAY WITH PENCIL. THIS WILL BECOME PART OF CABIN WINDSHIELD WHEN WING IS CEMENTED TO FUSELAGE. ALLOW ENTIRE STRUCTURE TO DRY THOROUGHLY.



**CONTROL LINE INSTALLATION NOTE**

CONTROL MECHANISM IS NOT INCLUDED IN THIS KIT. IT IS THE RESPONSIBILITY OF THE BUILDER TO PROVIDE A CONTROL SYSTEM. THE FOLLOWING IS A SUGGESTED CONTROL SYSTEM. THE CONTROL ROD IS ATTACHED TO THE WING STRUTS AND THE CONTROL HORN. THE CONTROL HORN IS ATTACHED TO THE CONTROL ROD AND THE CONTROL LINE. THE CONTROL LINE IS ATTACHED TO THE CONTROL HORN AND THE CONTROL LINE. THE CONTROL LINE IS ATTACHED TO THE CONTROL HORN AND THE CONTROL LINE.

**FUSELAGE ASSEMBLY NOTES**

**STEP 1** TRANSFER BULKHEAD LOCATIONS TO UNPRINTED SIDE OF DECK BY PUSHING STAIRS INTO PRINTED BULK HEAD LOCATIONS ON REVERSE SIDE.

**STEP 2** THE SELECTION OF YOUR ENGINE USED IN THIS MODEL MUST BE DETERMINED NOW SO THAT THE PROPER SPACING AND LOCATION OF YOUR ENGINE BEARERS ARE OBTAINED IN MANNER SHOWN ON DETAIL DRAWING. CUT HOLES IN BULKHEADS PRINTED WITH SAME TO PROPER LOCATION. DRILL HOLES IN PLYWOOD BULKHEAD F-2 AND MOUNT LANDING GEAR AS SHOWN. CEMENT F-4 TO REAR OF F-3 AND F-5 TO REAR OF F-3. NOW SECURELY CEMENT BULKHEAD NO. F-2, F-3, F-4, F-5, F-6, F-7, F-8, F-9, F-10, F-11, and F-12 IN PLACE. MAKE SURE THESE ARE VERTICAL. ADD KEEL F-15.

**STEP 3** INSERT AND CEMENT 3/16" SQ. STRINGERS INTO SLOTS FOR SAME IN BULKHEADS. STRINGERS ARE IN ONE PIECE FROM BULKHEAD F-2 BACK. SHORT STRINGERS FROM BULKHEAD F-2 TO F-3 AND ADD. DO NOT ATTEMPT TO USE ONE SIDE STRINGERS. THEY MUST BE SEPARATE AND BUTTED TO EACH OTHER USING DOUBLE BULKHEAD (F-20) TO RECEIVE THE RESPECTIVE ENDS. SLIDE MOTOR MOUNTS IN PLACE BACKING THEM UP AGAINST F-9. CEMENT SECURELY USING 2 OR 3 COATS OF SLICE. ADD TAIL BLOCK F-17. WHEN DRY, CARVE TO SHAPE COMPLETING THIS STEP.

**STEP 4** TURN FUSELAGE OVER AT THIS STEP.

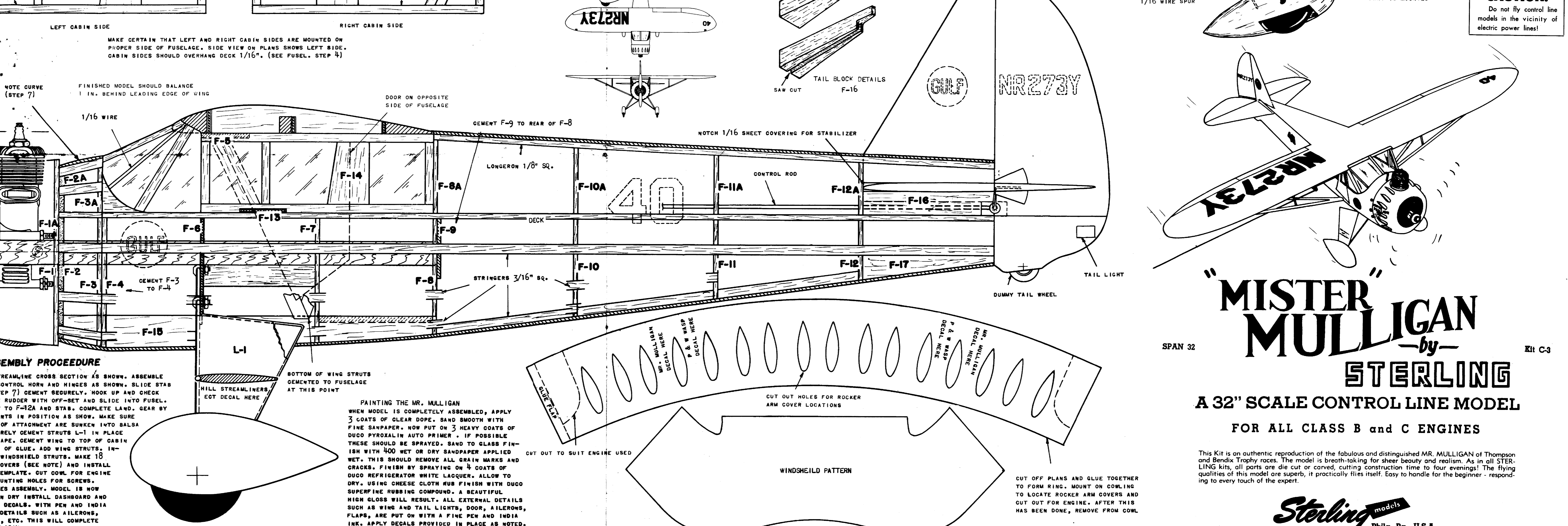
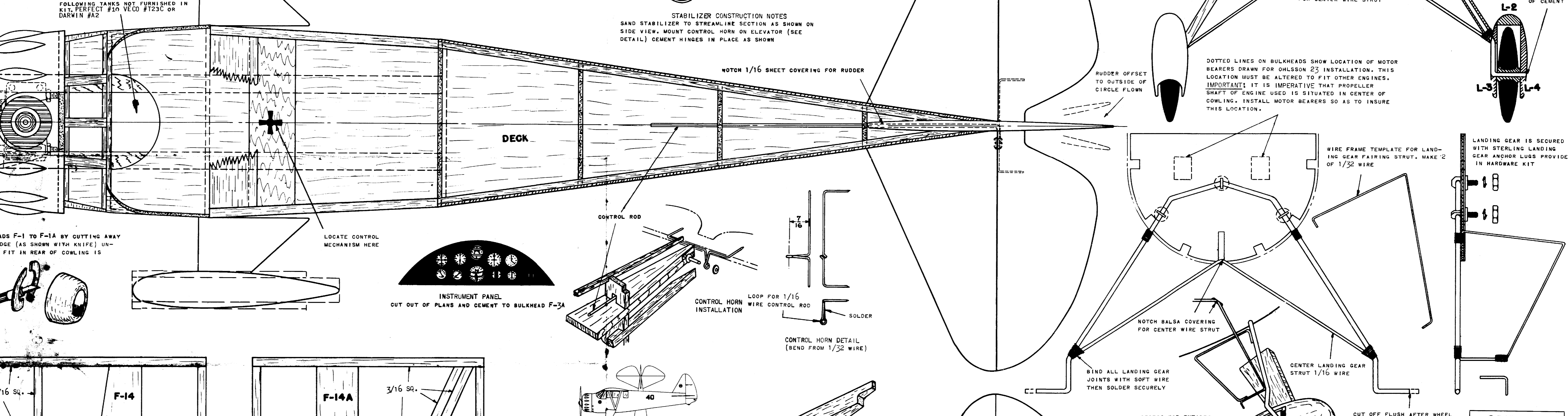
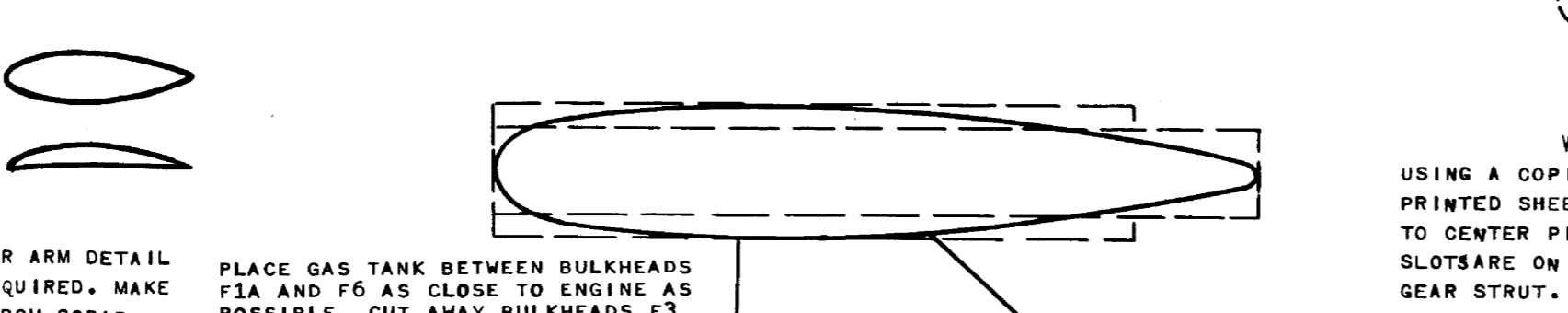
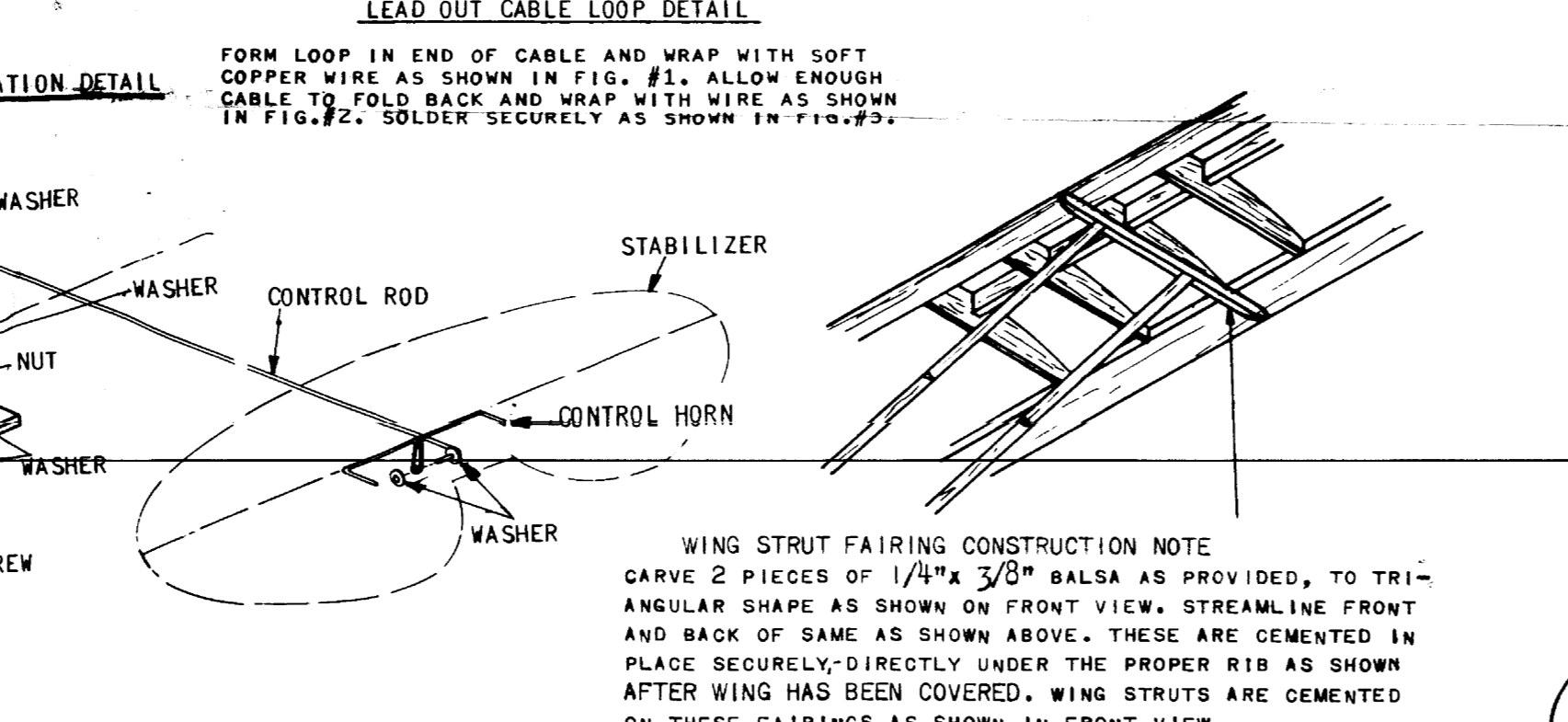
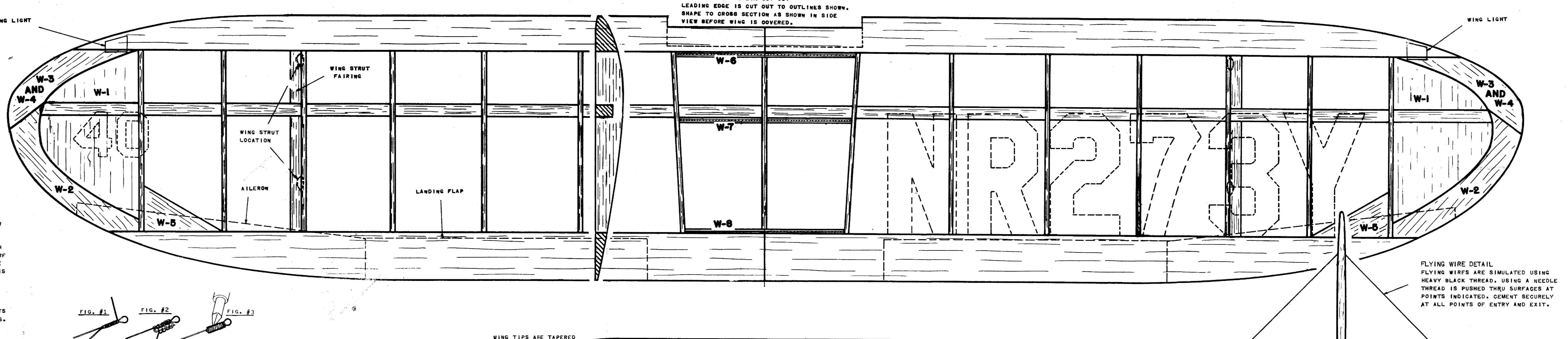
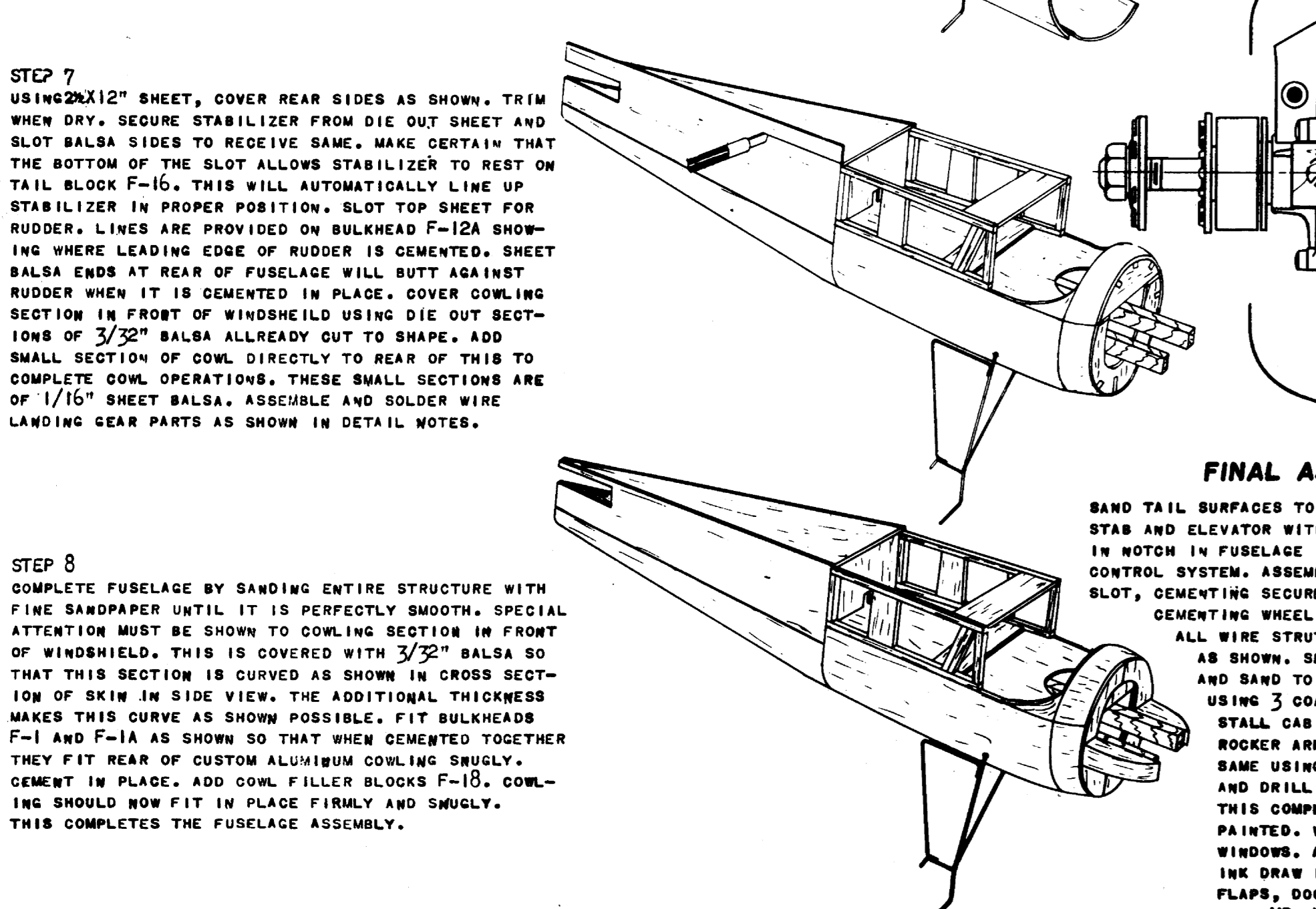
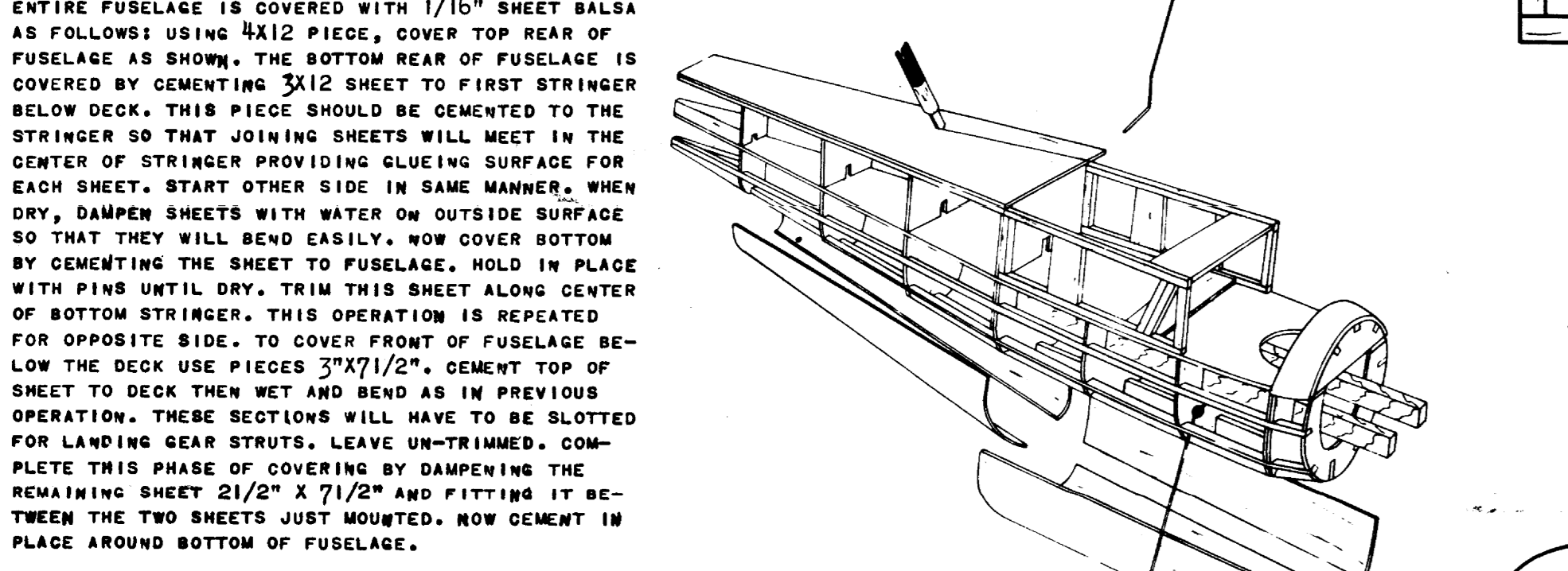
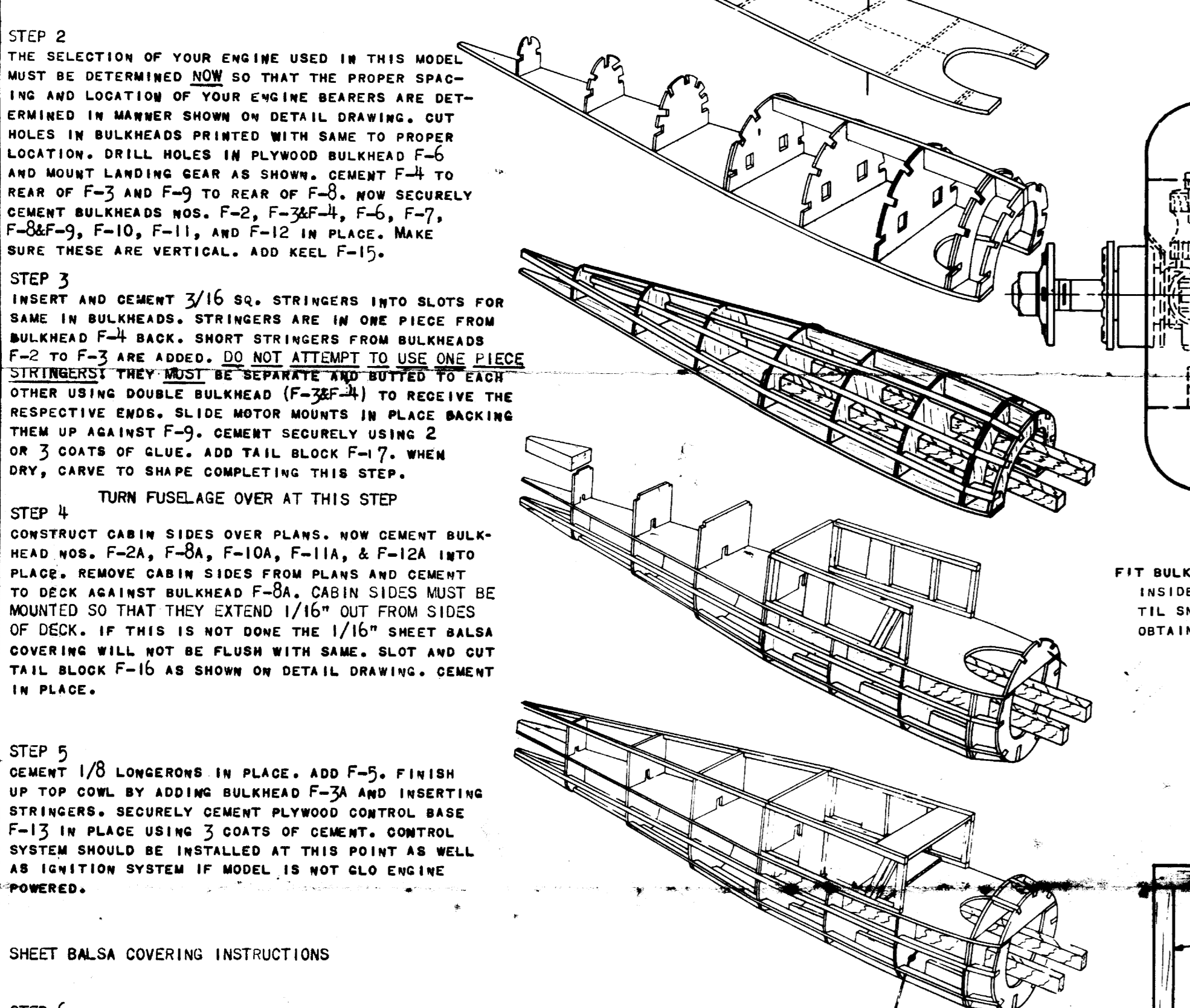
**STEP 5** CONSTRUCT CABIN SIDES OVER PLANS. NOW CEMENT BULKHEAD NO. F-2A, F-3A, F-10A, F-11A, & F-12A INTO PLACE. REMOVE CABIN SIDING FROM PLANS AND CEMENT TO DECK AGAINST BULKHEAD F-3A. CABIN SIDES MUST BE MOUNTED SO THAT THEY EXTEND 1/16" OUT FROM SIDES OF DECK. IF THIS IS NOT DONE THE 1/16" SHEET Balsa COVERING WILL NOT BE FLUSH WITH SAME. SLOT AND CUT TAIL BLOCK F-15 AS SHOWN ON DETAIL DRAWING. CEMENT IN PLACE.

**STEP 6** CEMENT 1/8" LONGERONS IN PLACE. ADD F-5. FINISH UP TOP COVE BY ADDING BULKHEAD F-3A AND INSERTING STRINGERS. SECURELY CEMENT PLYWOOD CONTROL BASE F-13 IN PLACE USING 3 COATS OF CEMENT. CONTROL SYSTEM SHOULD BE INSTALLED AT THIS POINT AS WELL AS IGNITION SYSTEM IF MODEL IS NOT TO BE ENGINE POWERED.

**SHEET Balsa COVERING INSTRUCTIONS**

**STEP 7** ENTIRE FUSELAGE IS COVERED WITH 1/16" SHEET Balsa AS FOLLOWS USING #412 PAPER. COVER TOP REAR OF FUSELAGE AS SHOWN. THE BOTTOM REAR OF FUSELAGE IS COVERED BY CEMENTING #412 SHEET TO FIRST STRINGER BELOW DECK. THIS PIECE SHOULD BE CEMENTED TO THE STRINGER SO THAT JOINING SHEETS WILL MEET IN THE CENTER OF STRINGER PROVIDING GLUING SURFACE FOR EACH SHEET. START OTHER SIDE IN SAME MANNER. WHEN WET, DAMPEN SHEETS WITH WATER ON OUTSIDE SURFACE SO THAT THEY WILL BEND EASILY. NOW COVER BOTTOM BY CEMENTING THE SHEET TO FUSELAGE. HOLD IN PLACE WITH PINS UNTIL DRY. TRIM THIS SHEET ALONG CENTER OF BOTTOM STRINGER. THIS OPERATION IS REPEATED FOR OPPOSITE SIDE TO COVER FRONT OF FUSELAGE BELOW THE DECK USE PIECES 3/4" x 1/2". CEMENT TOP OF SHEET TO DECK THEN NET AND BEND AS IN PREVIOUS OPERATION. THESE RECTANGLES WILL HAVE TO BE SLOTTED FOR LANDING GEAR STRUTS. LEAVE UNTRIMMED. COMPLETE THIS PHASE OF COVERING BY DAMPENING THE REMAINING SHEET 2 1/2" x 3 1/2" AND FITTING IT BETWEEN THE TWO SHEETS JUST MOUNTED. NOW CEMENT IN PLACE AROUND BOTTOM OF FUSELAGE.

**STEP 8** COMPLETE FUSELAGE BY SANDING ENTIRE STRUCTURE WITH FINE SANDPAPER UNTIL IT IS PERFECTLY SMOOTH. SPECIAL ATTENTION MUST BE SHOWN TO COILING SECTION IN FRONT OF WINDSHIELD. THIS IS COVERED WITH 3/32" Balsa SO THAT THIS SECTION IS SHOWN IN CROSS SECTION. MAKE THIS CURVE AS SHOWN POSSIBLE. ADDITIONAL THICKNESS MAKES THIS CURVE AS SHOWN POSSIBLE. FIT BULKHEADS F-1 AND F-1A AS SHOWN SO THAT WHEN CEMENTED TOGETHER THEY FIT REAR OF CUSTOM ALUMINUM COILING BRUSH. CEMENT IN PLACE. ADD COIL FILLER BLOCKS F-10, COILING SHOULD NOW FIT IN PLACE FINELY AND SMOOTHLY. THIS COMPLETES THE FUSELAGE ASSEMBLY.



**"MISTER MULLIGAN"**  
by  
**STERLING**  
A 32" SCALE CONTROL LINE MODEL  
FOR ALL CLASS B and C ENGINES

SPAN 32

THIS KIT IS AN AUTHENTIC REPRODUCTION OF THE FABULOUS AND DISTINGUISHED MR. MULLIGAN OF THORPSON AND BOND'S TRIP TO THE MOON. THE MODEL IS BUILT-HOLDING FOR SHEER BODILY AND REALISM. AS IN ALL STERLING KITS, ALL PORTS ARE DIE CUT OR CARVED, CUTTING CONSTRUCTION TIME TO FOUR EVENINGS! THE FLYING QUALITIES OF THIS MODEL ARE SUPERB, IT PRACTICALLY FLIES ITSELF. EASY TO HANDLE FOR THE BEGINNER - RESPONSIVE TO EVERY TOUCH OF THE DEUT.

**STERLING** models  
Phila. Pa. U.S.A.