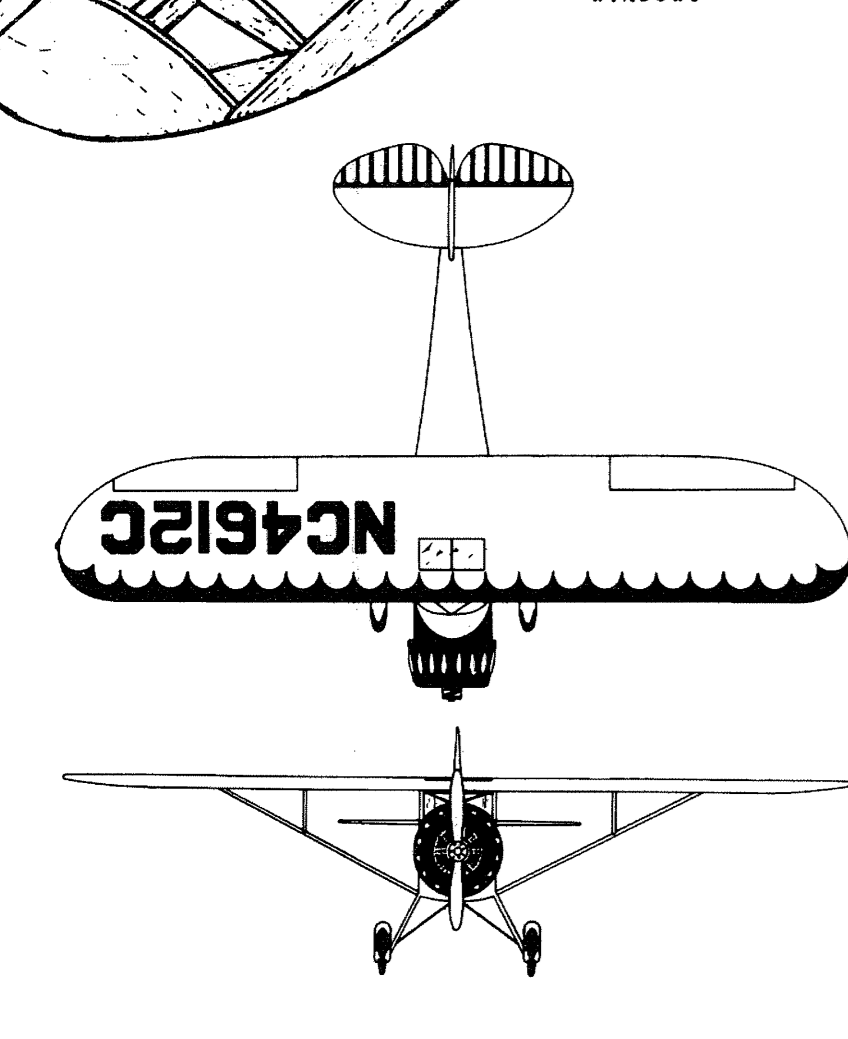
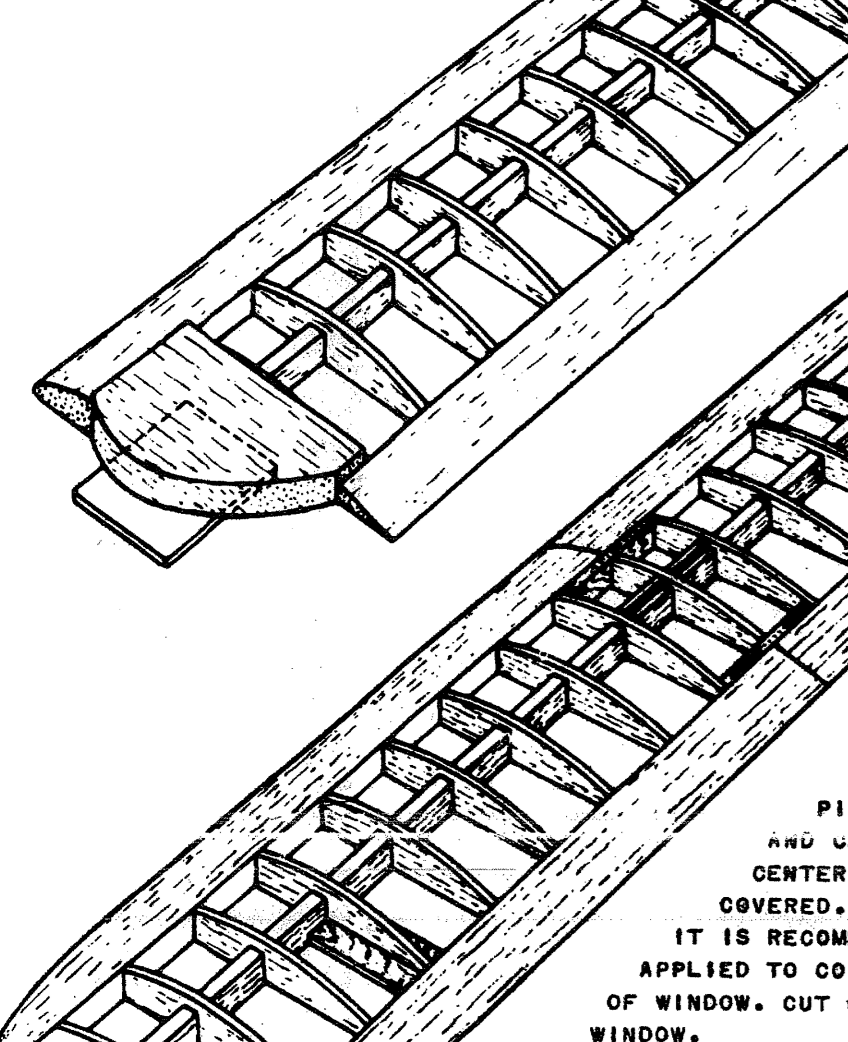


**WING CONSTRUCTION NOTES**

APPLY COAT OF CEMENT TO ENDS OF LEADING AND TRAILING EDGES AND SPARS FOR ADDITIONAL STRENGTH. PLACE LEADING AND TRAILING EDGES AND SPARS DIRECTLY ON DRAWING AND CEMENT CENTER JOINTS SECURELY. NOW CEMENT PLYWOOD REINFORCEMENTS (W-3) INTO POSITION AND ADD RIBS. CUT WING TIP BLOCKS (W-1) FROM PRINTED SHEET AND CEMENT INTO PLACE. 1/16 SHEET SHOULD BE PLACED UNDER WING TIP BLOCKS TO RAISE THEM TO RIB HEIGHT. ALLOW CEMENT TO DRY THOROUGHLY BEFORE REMOVING WING FROM PLANS



**FUSELAGE CONSTRUCTION NOTES**

**STEP 1** TRANSFER BULKHEAD LOCATIONS TO UPPER SIDE OF DECK (F-1) BY PUSHING STRAIGHT PINS THRU BULKHEAD LOCATIONS ALREADY PRINTED ON BOTTOM OF DECK. LOCATE CENTER LINE OF DECK IN SAME MANNER. USING PRINTED SURFACE OF DECK CENTER 1/8" STRIPS ALONG SIDES AS INDICATED BY DOTTED LINES.

**STEP 2** AT THIS POINT LOCATION OF THE ENGINE BEARERS SHOULD BE DETERMINED. (SEE NOTE ON DRAWING) AFTER LOCATION HAS BEEN DETERMINED TO SUIT ENGINE USED, HOLES FOR ENGINE BEARERS MAY BE CUT OUT AND FORMERS (F-2, F-3, F-4, F-5, F-6) CEMENTED IN PLACE. ADD F-7 MAKING SURE BULKHEADS ARE VERTICAL. FINISH THIS STEP BY ADDING BULKHEADS NOS. F-7, F-10, F-11, AND F-12. (F-7 IS CEMENTED TO REAR OF F-6 AS SHOWN.)

**STEP 3** CEMENT INTO POSITION KEELS F-9, 3/16 LONGERONS ARE THEN ADDED AND MOTOR BEARERS ARE GLUED INTO POSITION AND SECURELY CEMENTED USING AT LEAST TWO COATS OF CEMENT.

**TURN FUSELAGE OVER AT THIS STEP**

**STEP 4** CONSTRUCT THE CABIN SIDES ON DRAWING AS SHOWN. CEMENT BULKHEADS NOS. C-3 AND F-13 TOGETHER AND CEMENT INTO POSITION ALONG WITH BULKHEADS NOS. F-14, F-15, F-16, F-17. ADD 1/8" SQ. STRIPS ALONG SIDE OF DECK AS IN STEP 1. CEMENT CABIN SIDES INTO PLACE FLUSH WITH EDGE OF DECK. BEND TAIL SKID AND MOUNT AS SHOWN IN DETAIL DRAWING.

**STEP 5** CEMENT 1/8" SQ. LONGERONS IN PLACE. CUT TAIL BLOCK FROM PRINTED SHEET. IT IS THEN SLOTTED AND CUT AS SHOWN ON DRAWING AND CEMENTED IN PLACE. CEMENT PLYWOOD CONTROL BASE F-21, ALSO C-5, C-6 AND C-6 INTO POSITION. ADD BULKHEAD NOS. F-19 AND F-18. INSTALL LANDING GEAR. (SEE DRAWING FOR DETAILS.) CONSTRUCT BATTERY BOX AND INSTALL IGNITION AND CONTROL SYSTEMS AT THIS POINT.

**SHEET Balsa COVERING INSTRUCTIONS**

**STEP 6** USING THE 1/16 X 12 IN. SHEET COVER TOP OF FUSELAGE AS SHOWN. THE REMAINDER OF THIS SHEET IS USED TO COVER COILING SECTION IN FRONT OF WINDSHIELDS. BOTTOM OF FUSELAGE IS COVERED IN SECTIONS USING 24 IN. LENGTHS CUT AS SHOWN.

**STEP 7**

COVER SIDE OF FUSELAGE FROM THE DECK DOWN. THE CUT OFF PORTION OF THE SHEET IS USED TO COVER UPPER SIDE OF FUSELAGE. ENTIRE FUSELAGE IS NOW SMOOTH. MAKE SURE THE SHEET COVERING AND EDGE OF DECK ARE Sanded FLUSH TO APPEAR AS ONE PIECE.

**STEP 8**

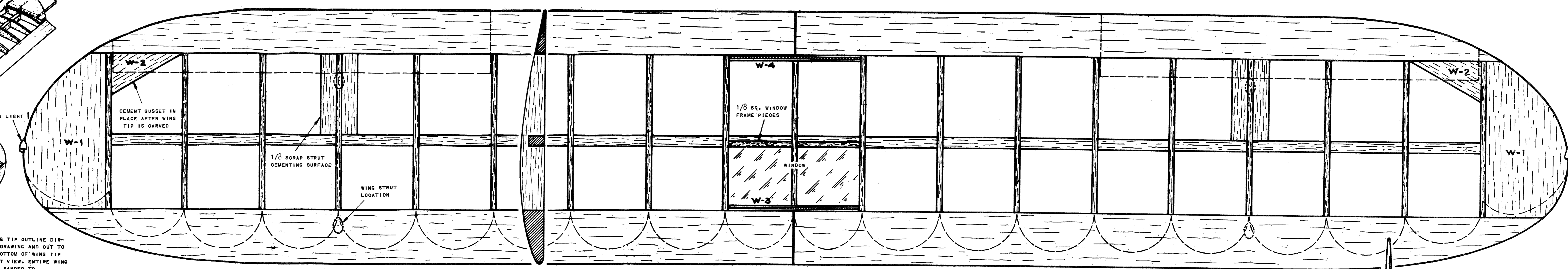
CUT OUT AND HINGE DOOR FOR BATTERY. FIT BULKHEAD NO. F-20 TO REAR OF CUSTOM SPIN ALUMINUM COILING AS SHOWN ON DRAWING TO INSURE SHUT FIT. CEMENT IN PLACE. CUT COILING FILLER BLOCKS F-23 FROM PRINTED SHEET AND CEMENT IN PLACE. CEMENT INSTRUMENT PANEL NO. C-7 IN PLACE AND ADD 1/16 WIRE WINDSHIELD STRUTS. COMPLETE LANDING GEAR AS SHOWN, NOTCHING BOTTOM OF FUSELAGE FOR CENTER LANDING GEAR STRUT.

**BEFORE GLUING F-20 IN PLACE, CUT AWAY INSIDE EDGE (AS SHOWN WITH KNIFE) UNTIL SHUT FIT IN REAR OF COILING IS OBTAINED**

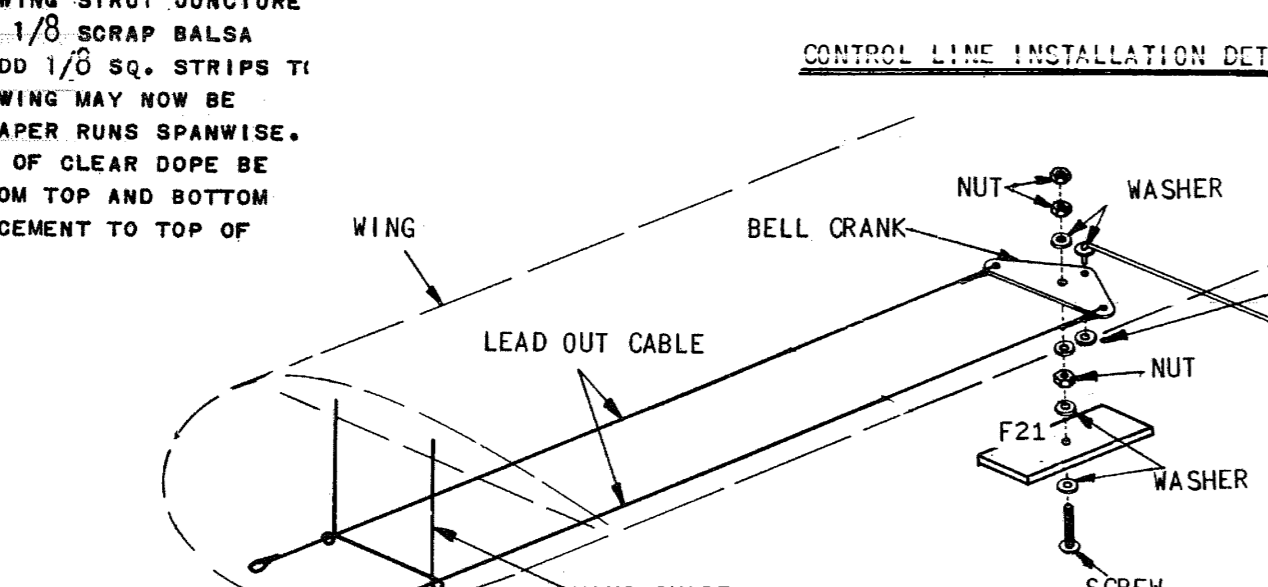
**WINDSHIELD PATTERN**

CUT OUT HOLES FOR ROCKER ARM COVER LOCATIONS

CUT OUT TO SUIT ENGINE USED



**CONTROL LINE INSTALLATION DETAILS**



**WING STRUT CONSTRUCTION NOTES**

ASSEMBLE 1/8 X 1/4 IN. STRIPS DIRECTLY OVER DRAWING. ADD FILLER PIECE. WHEN DRY REMOVE FROM PLANS AND SAND TO STREAMLINE CROSS SECTION AS SHOWN.

**STABILIZER CONSTRUCTION NOTES**

SAND STABILIZER TO STREAMLINE SECTION AS SHOWN ON SIDE VIEW. MOUNT CONTROL HORN ON ELEVATOR (SEE DETAIL) CEMENT HINGES IF PLACE AS SHOWN.

**ELEVATOR HINGE DETAIL**

CEMENT EIGHT HINGES CUT TO 1/2 X 1 1/2 (FROM CLOTH PROVIDED IN HARDWARE KIT) AS SHOWN.

**WING TIPS ARE TAPERED FROM BOTTOM AS SHOWN**

**WING TIPS ARE TAPERED FROM BOTTOM AS SHOWN**

**WING TIPS ARE TAPERED FROM BOTTOM AS SHOWN**

**WING TIPS ARE TAPERED FROM BOTTOM AS SHOWN**

**WING TIPS ARE TAPERED FROM BOTTOM AS SHOWN**

**WING TIPS ARE TAPERED FROM BOTTOM AS SHOWN**

**WING TIPS ARE TAPERED FROM BOTTOM AS SHOWN**

**WING TIPS ARE TAPERED FROM BOTTOM AS SHOWN**

**WING TIPS ARE TAPERED FROM BOTTOM AS SHOWN**

**WING TIPS ARE TAPERED FROM BOTTOM AS SHOWN**

**WING TIPS ARE TAPERED FROM BOTTOM AS SHOWN**

**WING TIPS ARE TAPERED FROM BOTTOM AS SHOWN**

**WING TIPS ARE TAPERED FROM BOTTOM AS SHOWN**

**WING TIPS ARE TAPERED FROM BOTTOM AS SHOWN**

**WING TIPS ARE TAPERED FROM BOTTOM AS SHOWN**

**WING TIPS ARE TAPERED FROM BOTTOM AS SHOWN**

**WING TIPS ARE TAPERED FROM BOTTOM AS SHOWN**

**WING TIPS ARE TAPERED FROM BOTTOM AS SHOWN**

**WING TIPS ARE TAPERED FROM BOTTOM AS SHOWN**

**WING TIPS ARE TAPERED FROM BOTTOM AS SHOWN**

**WING TIPS ARE TAPERED FROM BOTTOM AS SHOWN**

**WING TIPS ARE TAPERED FROM BOTTOM AS SHOWN**

**WING TIPS ARE TAPERED FROM BOTTOM AS SHOWN**

**WING TIPS ARE TAPERED FROM BOTTOM AS SHOWN**

**WING TIPS ARE TAPERED FROM BOTTOM AS SHOWN**

**WING TIPS ARE TAPERED FROM BOTTOM AS SHOWN**

**WING TIPS ARE TAPERED FROM BOTTOM AS SHOWN**

**WING TIPS ARE TAPERED FROM BOTTOM AS SHOWN**

**WING TIPS ARE TAPERED FROM BOTTOM AS SHOWN**

**WING TIPS ARE TAPERED FROM BOTTOM AS SHOWN**

**WING TIPS ARE TAPERED FROM BOTTOM AS SHOWN**

**WING TIPS ARE TAPERED FROM BOTTOM AS SHOWN**

**WING TIPS ARE TAPERED FROM BOTTOM AS SHOWN**

**WING TIPS ARE TAPERED FROM BOTTOM AS SHOWN**

**WING TIPS ARE TAPERED FROM BOTTOM AS SHOWN**

**WING TIPS ARE TAPERED FROM BOTTOM AS SHOWN**

**WING TIPS ARE TAPERED FROM BOTTOM AS SHOWN**

**WING TIPS ARE TAPERED FROM BOTTOM AS SHOWN**

**WING TIPS ARE TAPERED FROM BOTTOM AS SHOWN**

**WING TIPS ARE TAPERED FROM BOTTOM AS SHOWN**

**WING TIPS ARE TAPERED FROM BOTTOM AS SHOWN**

**WING TIPS ARE TAPERED FROM BOTTOM AS SHOWN**

**WING TIPS ARE TAPERED FROM BOTTOM AS SHOWN**

**WING TIPS ARE TAPERED FROM BOTTOM AS SHOWN**

**WING TIPS ARE TAPERED FROM BOTTOM AS SHOWN**

**WING TIPS ARE TAPERED FROM BOTTOM AS SHOWN**

**WING TIPS ARE TAPERED FROM BOTTOM AS SHOWN**

**WING TIPS ARE TAPERED FROM BOTTOM AS SHOWN**

**WING TIPS ARE TAPERED FROM BOTTOM AS SHOWN**

**WING TIPS ARE TAPERED FROM BOTTOM AS SHOWN**

**WING TIPS ARE TAPERED FROM BOTTOM AS SHOWN**

**WING TIPS ARE TAPERED FROM BOTTOM AS SHOWN**

**WING TIPS ARE TAPERED FROM BOTTOM AS SHOWN**

**WING TIPS ARE TAPERED FROM BOTTOM AS SHOWN**

**WING TIPS ARE TAPERED FROM BOTTOM AS SHOWN**

**WING TIPS ARE TAPERED FROM BOTTOM AS SHOWN**

**WING TIPS ARE TAPERED FROM BOTTOM AS SHOWN**

**WING TIPS ARE TAPERED FROM BOTTOM AS SHOWN**

**WING TIPS ARE TAPERED FROM BOTTOM AS SHOWN**

**WING TIPS ARE TAPERED FROM BOTTOM AS SHOWN**

**WING TIPS ARE TAPERED FROM BOTTOM AS SHOWN**

**WING TIPS ARE TAPERED FROM BOTTOM AS SHOWN**

**WING TIPS ARE TAPERED FROM BOTTOM AS SHOWN**

**WING TIPS ARE TAPERED FROM BOTTOM AS SHOWN**

**LEAD OUT CABLE LOOP DETAIL**

FORM LOOP IN END OF CABLE AND WRAP WITH SOFT COPPER WIRE AS SHOWN IN FIG. #1. ALLOW ENOUGH CABLE TO FOLD BACK AND WRAP WITH WIRE AS SHOWN IN FIG. #2. SOLDER SECURELY AS SHOWN IN FIG. #3.

**WHEEL PANT CONSTRUCTION NOTES**

CUT WHEEL PANT CENTER PIECE FROM PRINTED SHEET CEMENT SIDES FROM DIE CUT SHEET SECURELY TO CENTER PIECE. ALLOW ENOUGH TIME FOR GLUE TO SET THEN CARVE AND SAND TO STREAMLINE SHAPE AS SHOWN.

**STABILIZER CONSTRUCTION NOTES**

SAND STABILIZER TO STREAMLINE SECTION AS SHOWN ON SIDE VIEW. MOUNT CONTROL HORN ON ELEVATOR (SEE DETAIL) CEMENT HINGES IF PLACE AS SHOWN.

**ELEVATOR HINGE DETAIL**

CEMENT EIGHT HINGES CUT TO 1/2 X 1 1/2 (FROM CLOTH PROVIDED IN HARDWARE KIT) AS SHOWN.

**WING TIPS ARE TAPERED FROM BOTTOM AS SHOWN**

**WING TIPS ARE TAPERED FROM BOTTOM AS SHOWN**

**WING TIPS ARE TAPERED FROM BOTTOM AS SHOWN**

**WING TIPS ARE TAPERED FROM BOTTOM AS SHOWN**

**WING TIPS ARE TAPERED FROM BOTTOM AS SHOWN**

**WING TIPS ARE TAPERED FROM BOTTOM AS SHOWN**

**WING TIPS ARE TAPERED FROM BOTTOM AS SHOWN**

**WING TIPS ARE TAPERED FROM BOTTOM AS SHOWN**

**WING TIPS ARE TAPERED FROM BOTTOM AS SHOWN**

**WING TIPS ARE TAPERED FROM BOTTOM AS SHOWN**

**WING TIPS ARE TAPERED FROM BOTTOM AS SHOWN**

**WING TIPS ARE TAPERED FROM BOTTOM AS SHOWN**

**WING TIPS ARE TAPERED FROM BOTTOM AS SHOWN**

**WING TIPS ARE TAPERED FROM BOTTOM AS SHOWN**

**WING TIPS ARE TAPERED FROM BOTTOM AS SHOWN**

**WING TIPS ARE TAPERED FROM BOTTOM AS SHOWN**

**WING TIPS ARE TAPERED FROM BOTTOM AS SHOWN**

**WING TIPS ARE TAPERED FROM BOTTOM AS SHOWN**

**WING TIPS ARE TAPERED FROM BOTTOM AS SHOWN**

**WING TIPS ARE TAPERED FROM BOTTOM AS SHOWN**

**WING TIPS ARE TAPERED FROM BOTTOM AS SHOWN**

**WING TIPS ARE TAPERED FROM BOTTOM AS SHOWN**

**WING TIPS ARE TAPERED FROM BOTTOM AS SHOWN**

**WING TIPS ARE TAPERED FROM BOTTOM AS SHOWN**

**WING TIPS ARE TAPERED FROM BOTTOM AS SHOWN**

**WING TIPS ARE TAPERED FROM BOTTOM AS SHOWN**

**WING TIPS ARE TAPERED FROM BOTTOM AS SHOWN**

**WING TIPS ARE TAPERED FROM BOTTOM AS SHOWN**

**WING TIPS ARE TAPERED FROM BOTTOM AS SHOWN**

**WING TIPS ARE TAPERED FROM BOTTOM AS SHOWN**

**WING TIPS ARE TAPERED FROM BOTTOM AS SHOWN**

**WING TIPS ARE TAPERED FROM BOTTOM AS SHOWN**

**WING TIPS ARE TAPERED FROM BOTTOM AS SHOWN**

**WING TIPS ARE TAPERED FROM BOTTOM AS SHOWN**

**WING TIPS ARE TAPERED FROM BOTTOM AS SHOWN**

**WING TIPS ARE TAPERED FROM BOTTOM AS SHOWN**

**WING TIPS ARE TAPERED FROM BOTTOM AS SHOWN**

**WING TIPS ARE TAPERED FROM BOTTOM AS SHOWN**

**WING TIPS ARE TAPERED FROM BOTTOM AS SHOWN**

**WING TIPS ARE TAPERED FROM BOTTOM AS SHOWN**

**WING TIPS ARE TAPERED FROM BOTTOM AS SHOWN**

**WING TIPS ARE TAPERED FROM BOTTOM AS SHOWN**

**WING TIPS ARE TAPERED FROM BOTTOM AS SHOWN**

**WING TIPS ARE TAPERED FROM BOTTOM AS SHOWN**

**WING TIPS ARE TAPERED FROM BOTTOM AS SHOWN**

**WING TIPS ARE TAPERED FROM BOTTOM AS SHOWN**

**WING TIPS ARE TAPERED FROM BOTTOM AS SHOWN**

**WING TIPS ARE TAPERED FROM BOTTOM AS SHOWN**

**WING TIPS ARE TAPERED FROM BOTTOM AS SHOWN**

**WING TIPS ARE TAPERED FROM BOTTOM AS SHOWN**

**WING TIPS ARE TAPERED FROM BOTTOM AS SHOWN**

**WING TIPS ARE TAPERED FROM BOTTOM AS SHOWN**

**WING TIPS ARE TAPERED FROM BOTTOM AS SHOWN**

**WING TIPS ARE TAPERED FROM BOTTOM AS SHOWN**

**WING TIPS ARE TAPERED FROM BOTTOM AS SHOWN**

**WING TIPS ARE TAPERED FROM BOTTOM AS SHOWN**

**WING TIPS ARE TAPERED FROM BOTTOM AS SHOWN**

**WING TIPS ARE TAPERED FROM BOTTOM AS SHOWN**

**WING TIPS ARE TAPERED FROM BOTTOM AS SHOWN**

**WING TIPS ARE TAPERED FROM BOTTOM AS SHOWN**

**WING TIPS ARE TAPERED FROM BOTTOM AS SHOWN**

**WING TIPS ARE TAPERED FROM BOTTOM AS SHOWN**

**WING TIPS ARE TAPERED FROM BOTTOM AS SHOWN**

**WING TIPS ARE TAPERED FROM BOTTOM AS SHOWN**

**WING TIPS ARE TAPERED FROM BOTTOM AS SHOWN**

**WING TIPS ARE TAPERED FROM BOTTOM AS SHOWN**

**WING TIPS ARE TAPERED FROM BOTTOM AS SHOWN**

**WING TIPS ARE TAPERED FROM BOTTOM AS SHOWN**

**WING TIPS ARE TAPERED FROM BOTTOM AS SHOWN**

**WING TIPS ARE TAPERED FROM BOTTOM AS SHOWN**

**WING TIPS ARE TAPERED FROM BOTTOM AS SHOWN**

**LEAD OUT CABLE LOOP DETAIL**

FORM LOOP IN END OF CABLE AND WRAP WITH SOFT COPPER WIRE AS SHOWN IN FIG. #1. ALLOW ENOUGH CABLE TO FOLD BACK AND WRAP WITH WIRE AS SHOWN IN FIG. #2. SOLDER SECURELY AS SHOWN IN FIG. #3.

**WHEEL PANT CONSTRUCTION NOTES**

CUT WHEEL PANT CENTER PIECE FROM PRINTED SHEET CEMENT SIDES FROM DIE CUT SHEET SECURELY TO CENTER PIECE. ALLOW ENOUGH TIME FOR GLUE TO SET THEN CARVE AND SAND TO STREAMLINE SHAPE AS SHOWN.

**STABILIZER CONSTRUCTION NOTES**

SAND STABILIZER TO STREAMLINE SECTION AS SHOWN ON SIDE VIEW. MOUNT CONTROL HORN ON ELEVATOR (SEE DETAIL) CEMENT HINGES IF PLACE AS SHOWN.

**ELEVATOR HINGE DETAIL**

CEMENT EIGHT HINGES CUT TO 1/2 X 1 1/2 (FROM CLOTH PROVIDED IN HARDWARE KIT) AS SHOWN.

**WING TIPS ARE TAPERED FROM BOTTOM AS SHOWN**

**WING TIPS ARE TAPERED FROM BOTTOM AS SHOWN**

**WING TIPS ARE TAPERED FROM BOTTOM AS SHOWN**

**WING TIPS ARE TAPERED FROM BOTTOM AS SHOWN**

**WING TIPS ARE TAPERED FROM BOTTOM AS SHOWN**

**WING TIPS ARE TAPERED FROM BOTTOM AS SHOWN**

**WING TIPS ARE TAPERED FROM BOTTOM AS SHOWN**

**WING TIPS ARE TAPERED FROM BOTTOM AS SHOWN**

**WING TIPS ARE TAPERED FROM BOTTOM AS SHOWN**

**WING TIPS ARE TAPERED FROM BOTTOM AS SHOWN**

**WING TIPS ARE TAPERED FROM BOTTOM AS SHOWN**

**WING TIPS ARE TAPERED FROM BOTTOM AS SHOWN**

**WING TIPS ARE TAPERED FROM BOTTOM AS SHOWN**

**WING TIPS ARE TAPERED FROM BOTTOM AS SHOWN**

**WING TIPS ARE TAPERED FROM BOTTOM AS SH**