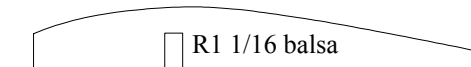
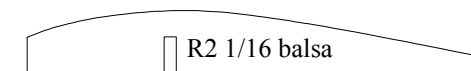
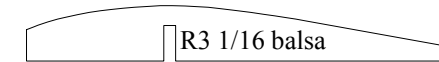
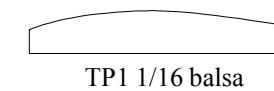
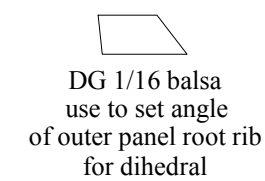
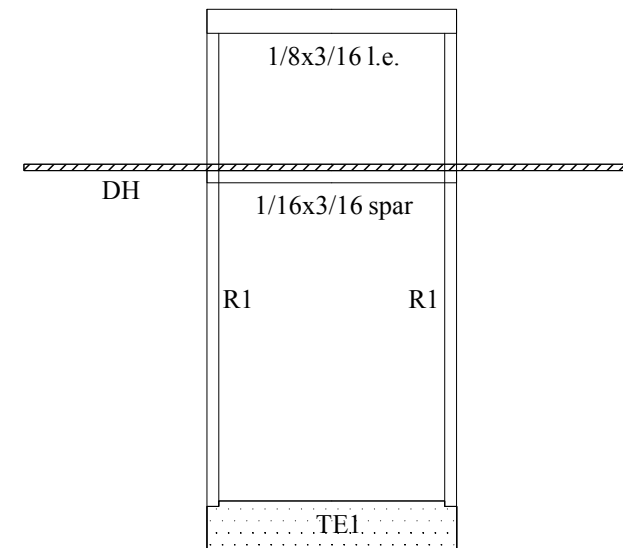
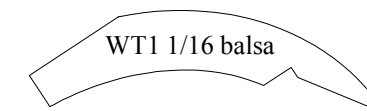
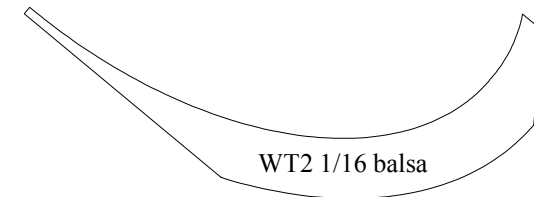


unless stated otherwise
all wood is 1/16 balsa
by size or shape shown

**Peter Rake's
Hummingbird Baby**
Copyright P. Rake 2013



Peter Rake's Hummingbird Baby

Copyright P. Rake 2013

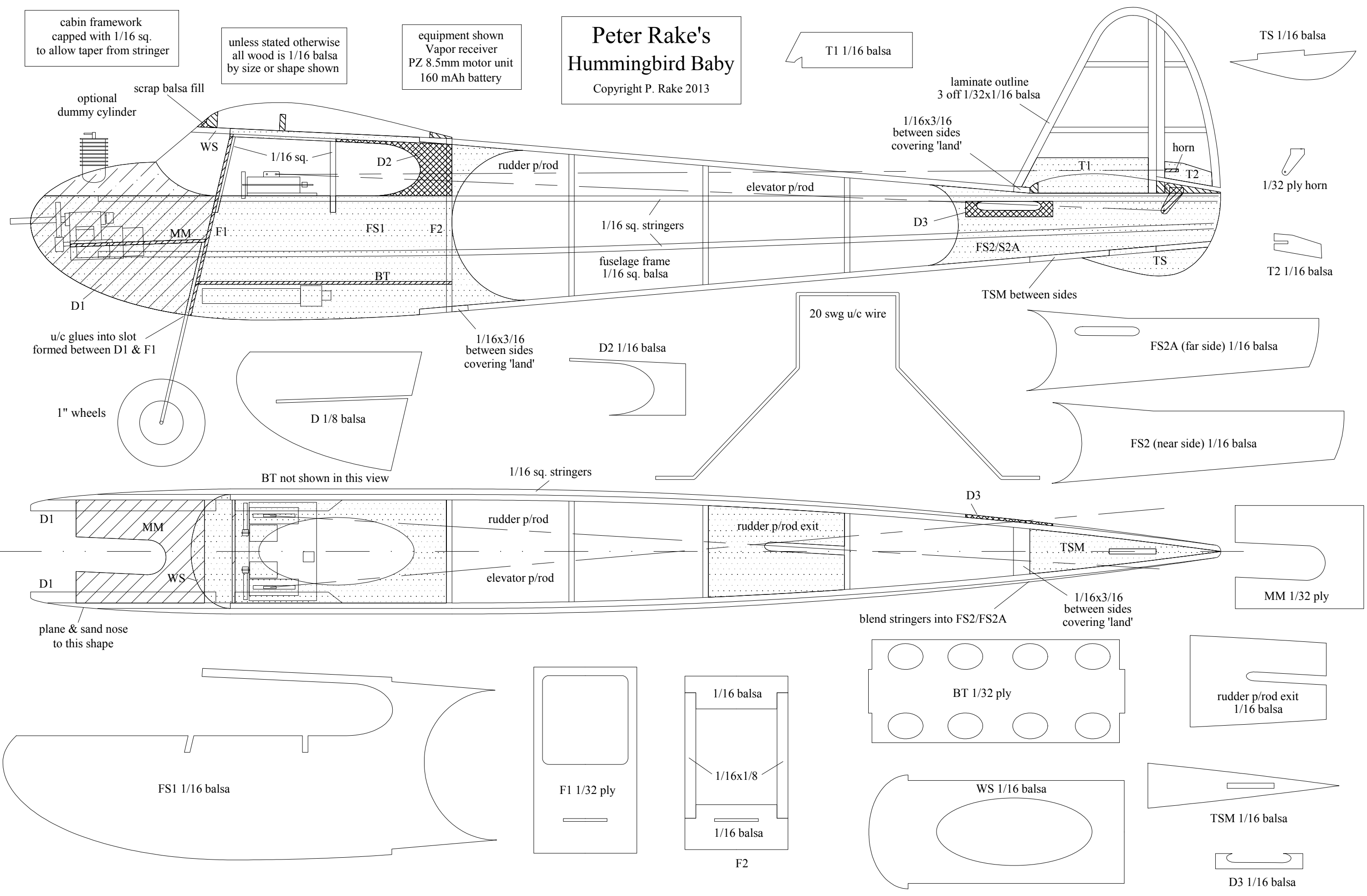
cabin framework capped with 1/16 sq. to allow taper from stringer

unless stated otherwise all wood is 1/16 balsa by size or shape shown

equipment shown
Vapor receiver
PZ 8.5mm motor unit
160 mAh battery

T1 1/16 balsa

TS 1/16 balsa



1/32 ply horn

T2 1/16 balsa

20 swg u/c wire

TSM between sides

FS2A (far side) 1/16 balsa

FS2 (near side) 1/16 balsa

BT not shown in this view

1/16 sq. stringers

D3

blend stringers into FS2/FS2A
1/16x3/16 between sides covering 'land'

MM 1/32 ply

plane & sand nose to this shape

FS1 1/16 balsa

F1 1/32 ply

1/16 balsa

1/16x1/8

1/16 balsa

F2

BT 1/32 ply

WS 1/16 balsa

rudder p/rod exit 1/16 balsa

TSM 1/16 balsa

D3 1/16 balsa