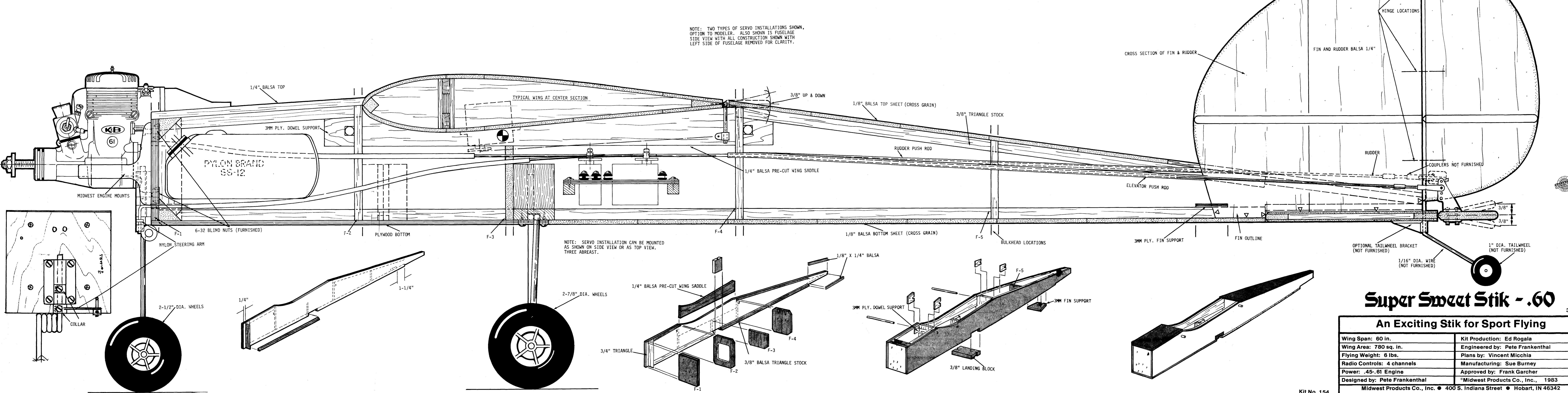
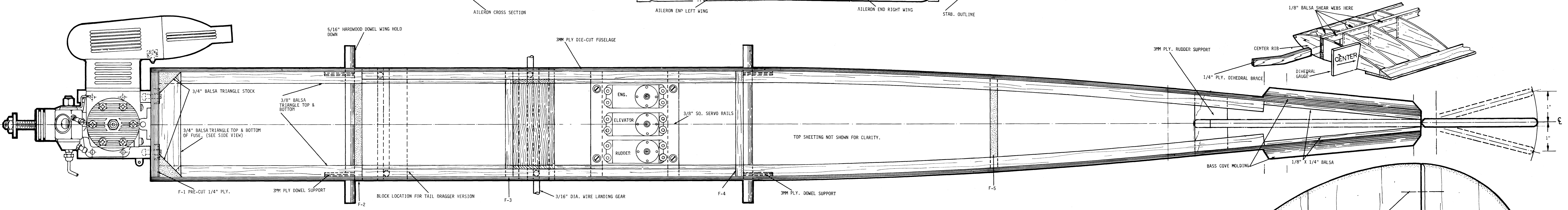
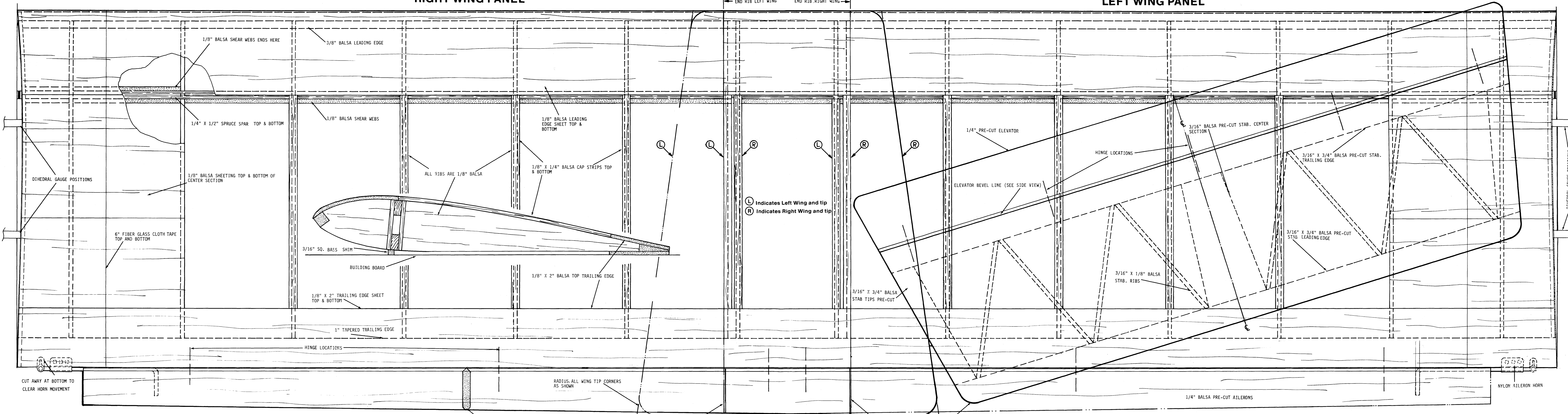


RIGHT WING PANEL

LEFT WING PANEL



NOTE: TWO TYPES OF SERVO INSTALLATIONS SHOWN. OPTION TO MODELER. ALSO SHOWN IS FUSELAGE SIDE VIEW WITH ALL CONSTRUCTION SHOWN WITH LEFT SIDE OF FUSELAGE REMOVED FOR CLARITY.

NOTE: SERVO INSTALLATION CAN BE MOUNTED AS SHOWN ON SIDE VIEW OR AS TOP VIEW. THREE ABBREAST.

Super Sweet Stik - .60

An Exciting Stik for Sport Flying	
Wing Span: 60 in.	Kit Production: Ed Rogala
Wing Area: 780 sq. in.	Engineered by: Pete Frankenthal
Flying Weight: 6 lbs.	Plans by: Vincent Micchia
Radio Controls: 4 channels	Manufacturing: Sue Burney
Power: .45-.61 Engine	Approved by: Frank Garcher
Designed by: Pete Frankenthal	Midwest Products Co., Inc. 1983
Midwest Products Co., Inc. • 400 S. Indiana Street • Hobart, IN 46342	