

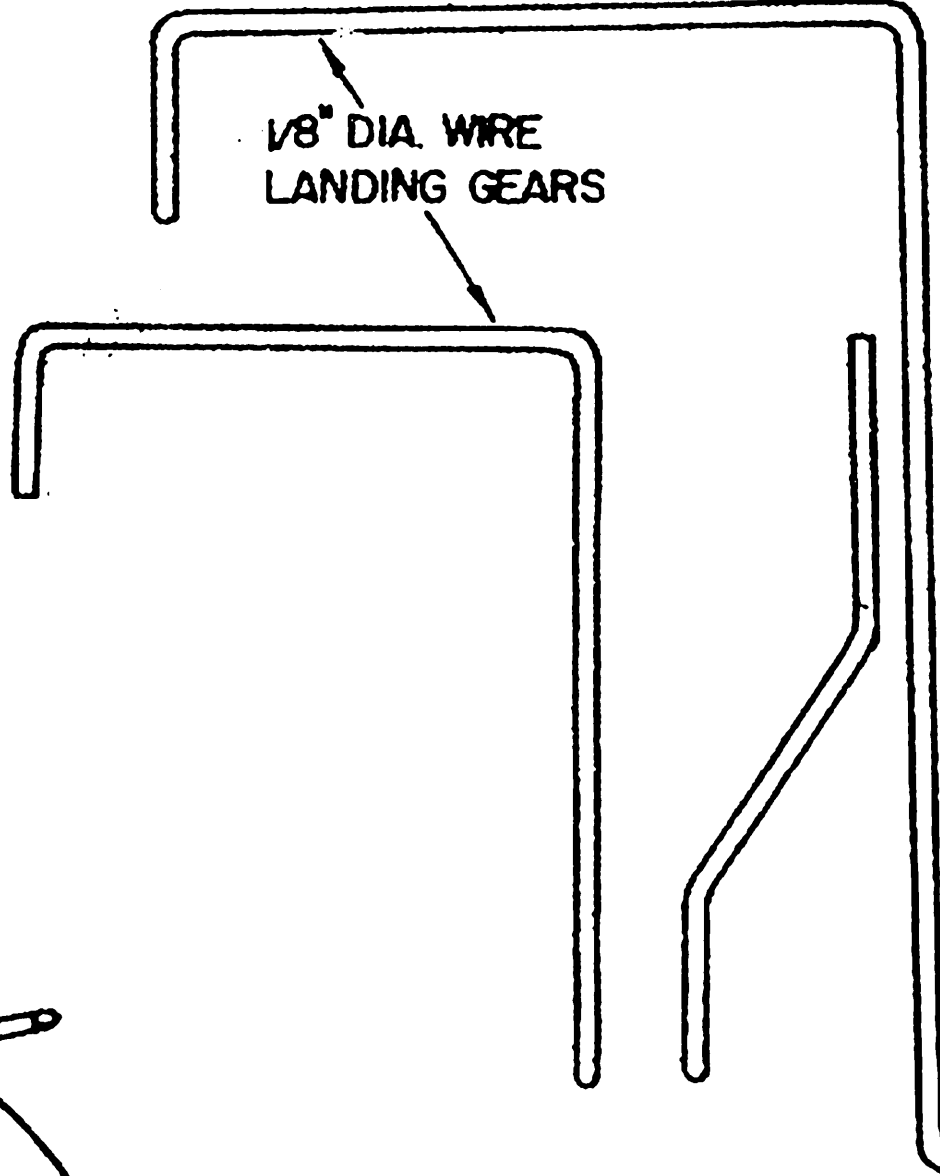
1/4" X 1/2" LEADING EDGE STOCK

3/8" Balsa TIPS
LEADOUT
BIND AND SOLDER
LEADOUT

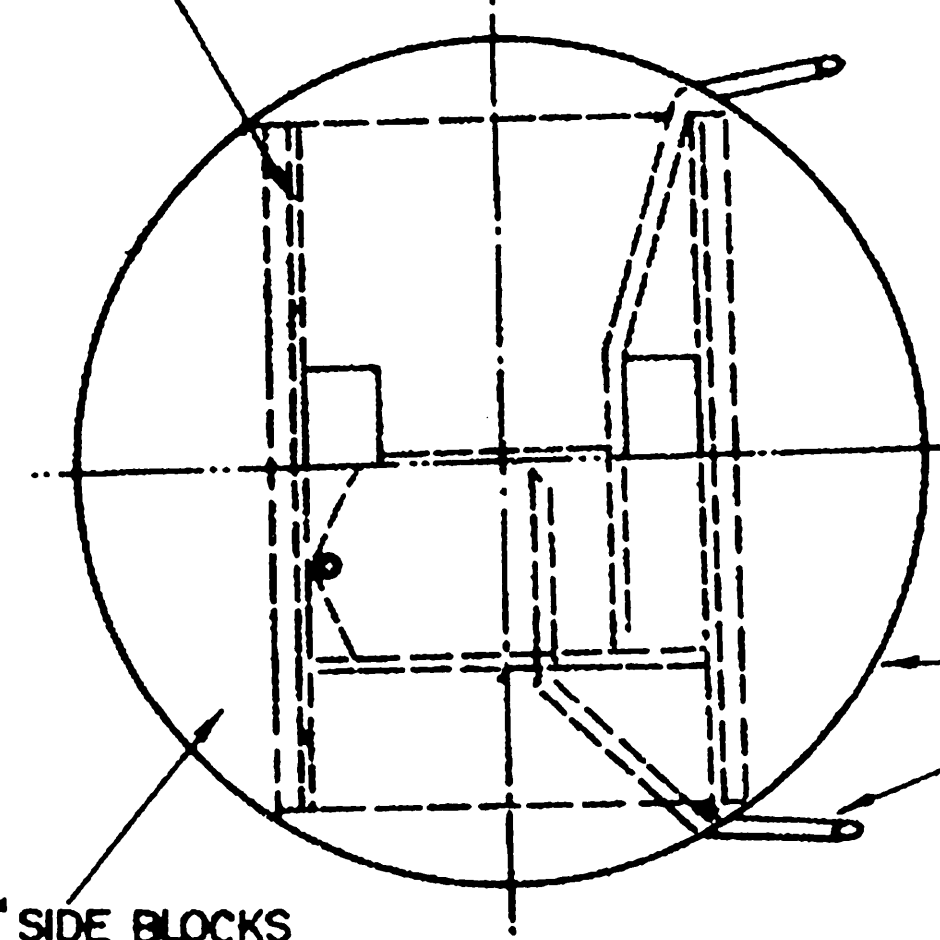
DESIGNED BY JACK SHEEKS
"INDIANAPOLIS STUNT TEAM"

SOFT BLOCK TIP

1/8" DIA. WIRE
LANDING GEARS



1/16" PLYWOOD DOUBLERS

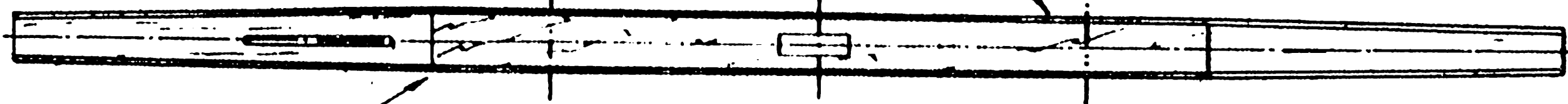


1" SIDE BLOCKS

1/4" PLYWOOD RING
1/8" DIA. COPPER VENT TUBES

1/8" X 1/2" CAPSTRIPS

I-BEAM - REDUCED SCALE



P-47 CANOPY

HOLLOWED Balsa BLOCK

1-1/2" Balsa BLOCK

1-1/2" SPINNERS

POWER:
TWO FOX .35'S

1/2" BLOCK

1/4" X 1/2" Balsa
LEADING EDGE

1/16" PLY DOUBLERS END

1/8" X 3/8" MOTOR MOUNTS

3-1/2" VECO TANKS

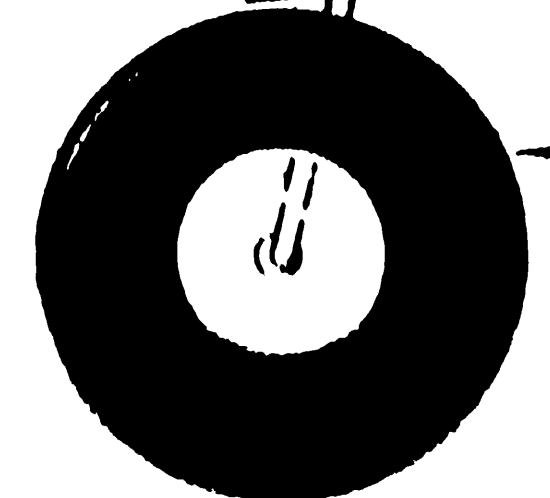
1/8" Balsa SIDES

BLOCK

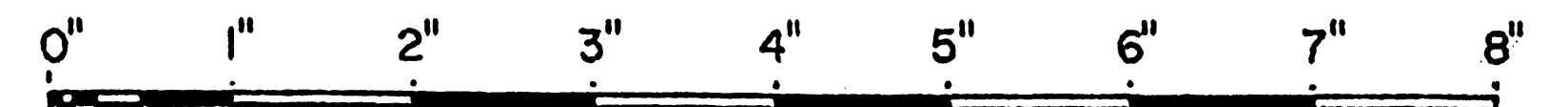
STERLING NIEUPOORT 28 COWLS

1/4" PLYWOOD RING

1/16" PLYWOOD

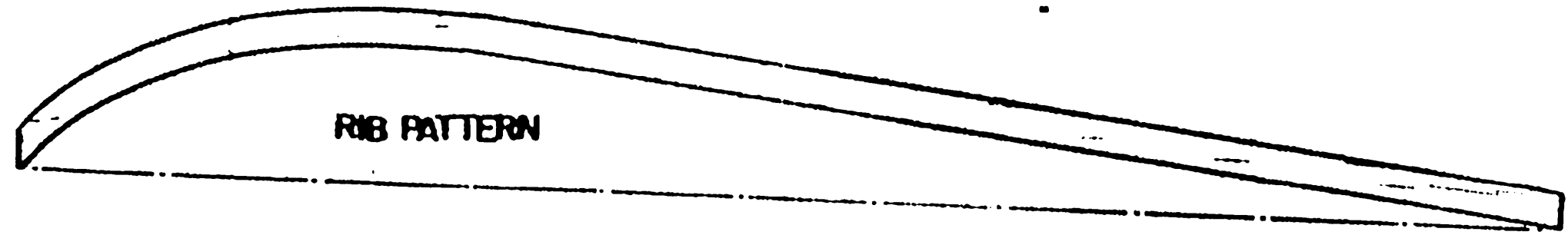
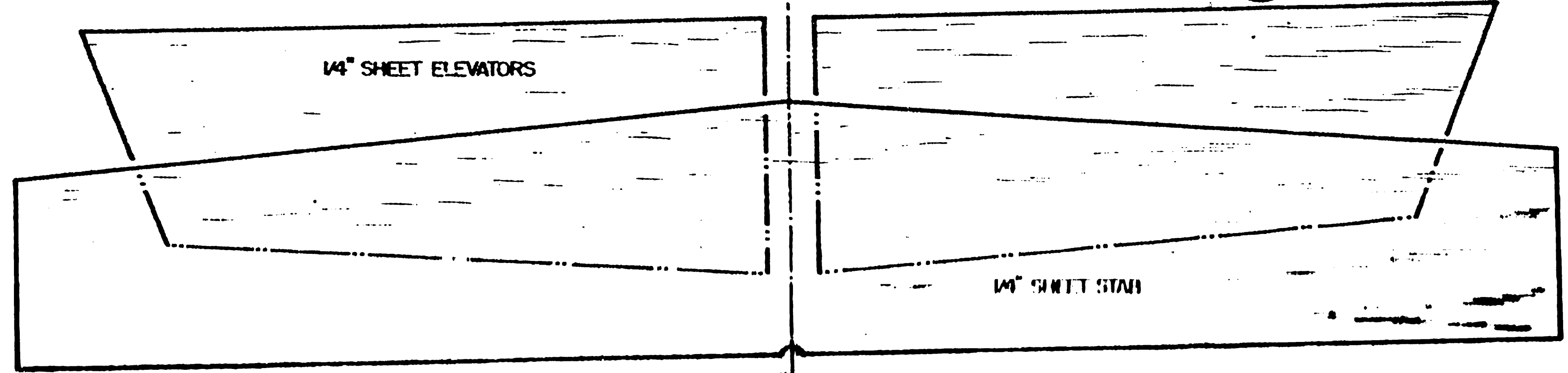


2-1/2" DIA. WHEELS



1/4" SHEET ELEVATORS

1/4" SHEET STAB



RIB PATTERN

1/4" Balsa
RUDDERS

HORN

1/4" Balsa

1/8" Balsa SIDES

1/2" SQ. TRAILING EDGE

1/4" SHEET WORKABLE FLAPS

FUSELAGE
SIDING
PULL TOGETHER
TOWARD
TAIL

1/4" Balsa

FALSE FLAP

FALSE FLAP

1/4" OR 3/8"
RIBS

PLANKED
WITH 1/16"
Balsa

1/16" SH.

1" BOLTS