

Me-110B-1

MOTOR AXIS AT RIGHT ANGLES TO NACELLE FRONT

SPEED 400 NO OFFSET

ENGINE NACELLE INBOARD SIDE TEMPLATE

NACELLE OUTER SIDE TEMPLATE

ROOT TEMPLATE

5mmØ COOLING HOLES ON BOTH SIDES 3/8" Balsa

WING PLAN (White foam)

VENEERED OBECHI OR 0.5mm Balsa

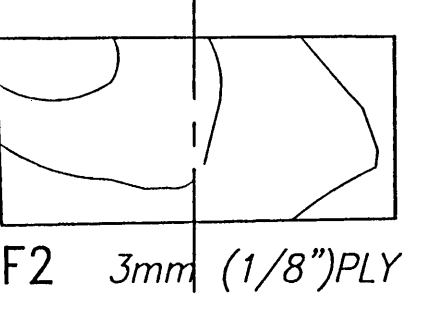
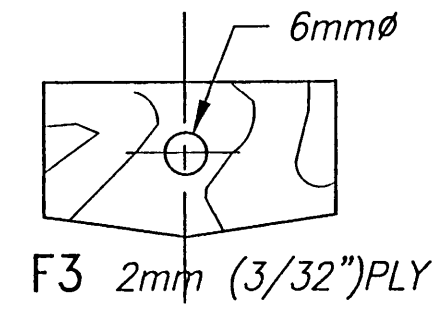
NO WASHOUT

NACELLES LOST FOAM

5mmØ H/W DOWEL

VERTICAL STAB TIP-PLATE FIN (2 off) 4mm(3/16")

GLUE TO TAILPLANE HERE



10mm Balsa

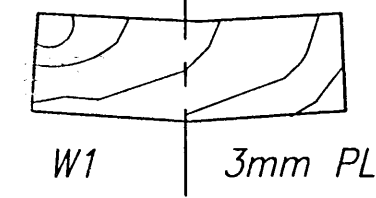
TIP TEMPLATE

Aileron Travel: UP 9mm, DOWN 5mm

WING DIHEDRAL

70mm

3/4" x 3/16" Tr. Edge



2mm (14swg) PIANO WIRE IN PLASTIC TUBE

F3

2mm PIANO WIRE

By: Paul Janssens
Gasthuisstraat 29
2440 GEEL
BELGIUM

FUSELAGE TOP VIEW
R/C COMPONENTS NOT SHOWN FOR CLARITY

PLASTIC TUBE

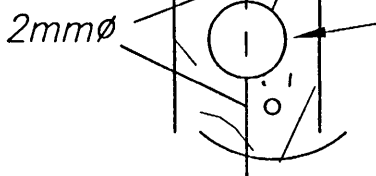
MOULDED CANOPY ALSO AVAILABLE PRICE 550F (Belgian) SEE ADDRESS BOX

F4

F5

W2 2mm PLY

NO DIHEDRAL



ELEVATOR CONTROL LINKAGE

4mm(EX 3/16") TAILPLANE
4mm(EX 3/16") ELEVATOR

BLUE FOAM

BATT PACK

VELCRO

RECEIVER

elevator servo

F2

aileron servo

SWITCH

FUSELAGE SIDE VIEW

F1

3/32" Balsa (2mm)

F4

F5

NYLON M5

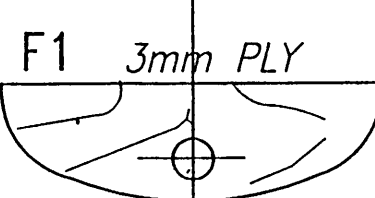
F3

3/16" (5) Sq Balsa

FUSELAGE SIDE VIEW YEMPLATE

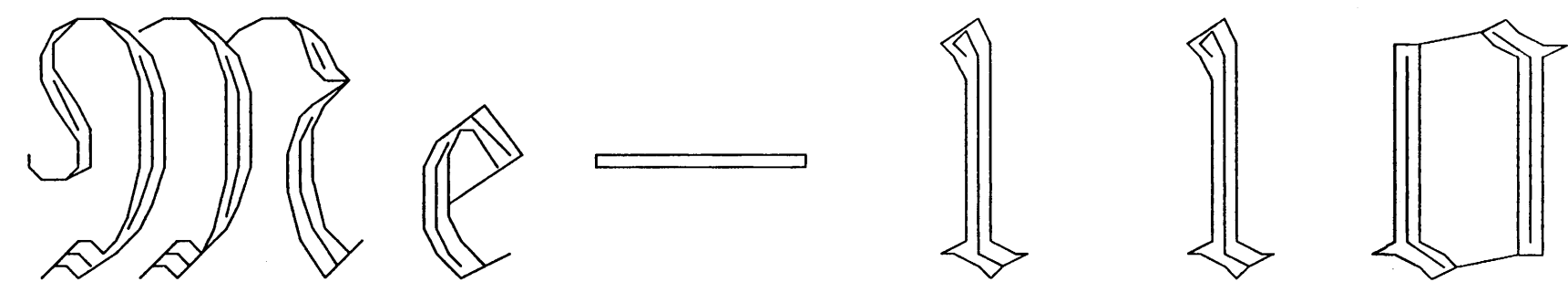
ELEVATOR TRAVEL:
UP - 10mm
DOWN 8mm

SPAN 1180mm
LENGTH 710mm
WEIGHT 1.2Kg



ENGINE NACELLE PLAN VIEW TEMPLATE

REFERENCES TO BLUE FOAM ARE ASSUMED TO BE I.B. GRADE STYROFOAM BY LOW CHEMICALS OR THE EQUIVALENT DENSITY OF MATERIAL



MODEL WORLD

MW2682

ME 110

Sport scale model of this WWII classic as an electric or PSS model.
Radio - 3 function (electric); 2 function (PSS)
Motor - twin speed 400
Wingspan - 1180mm
Weight - 1.2Kg
Designed by Paul Janssens
© R/C Model World Plans Service

TIMBER IS Balsa IF NOT DESCRIBED