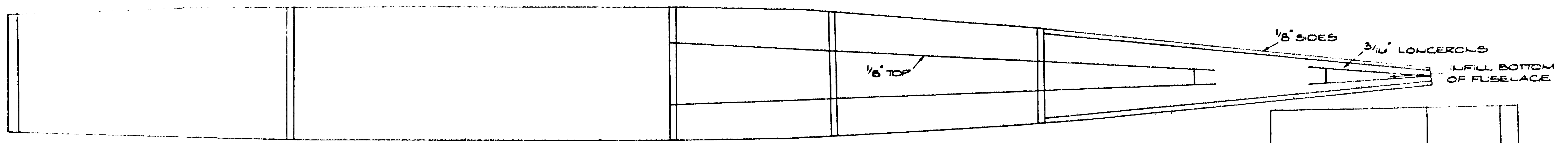
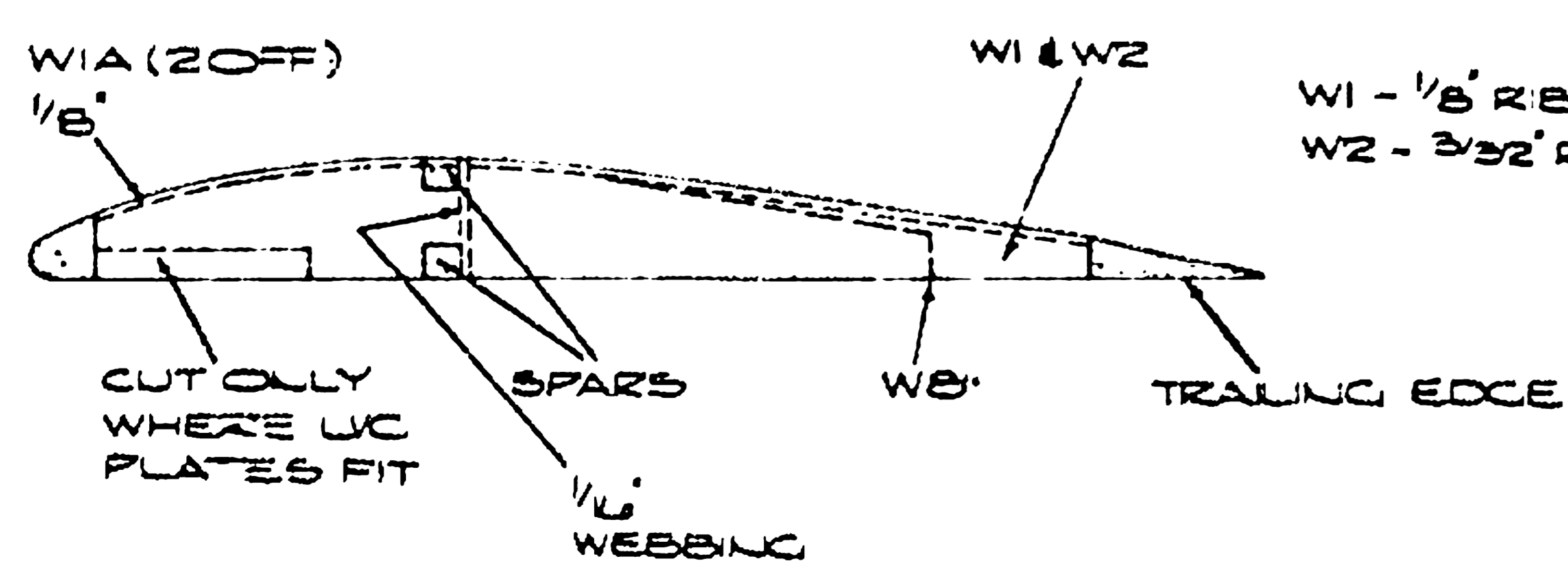
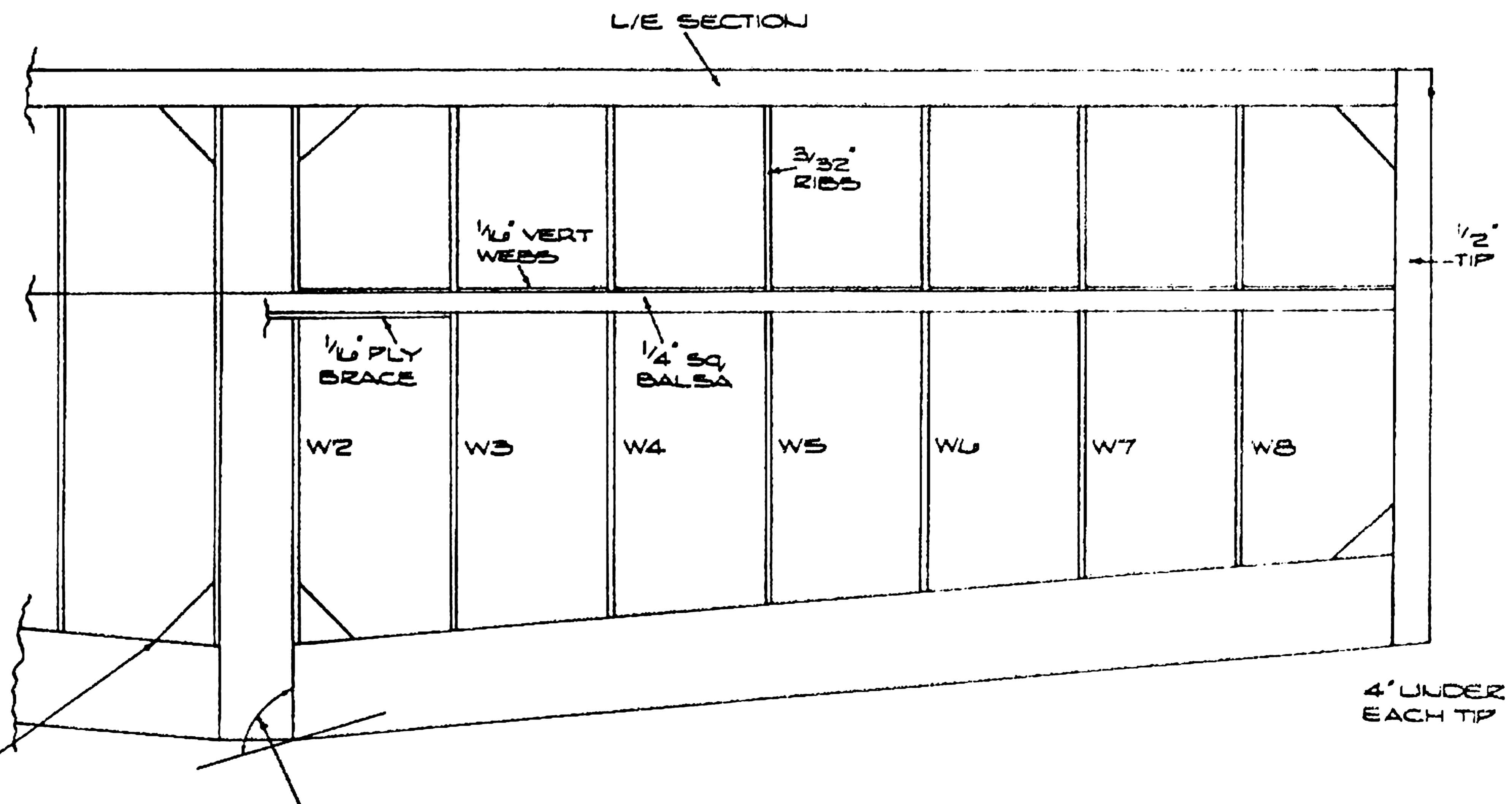
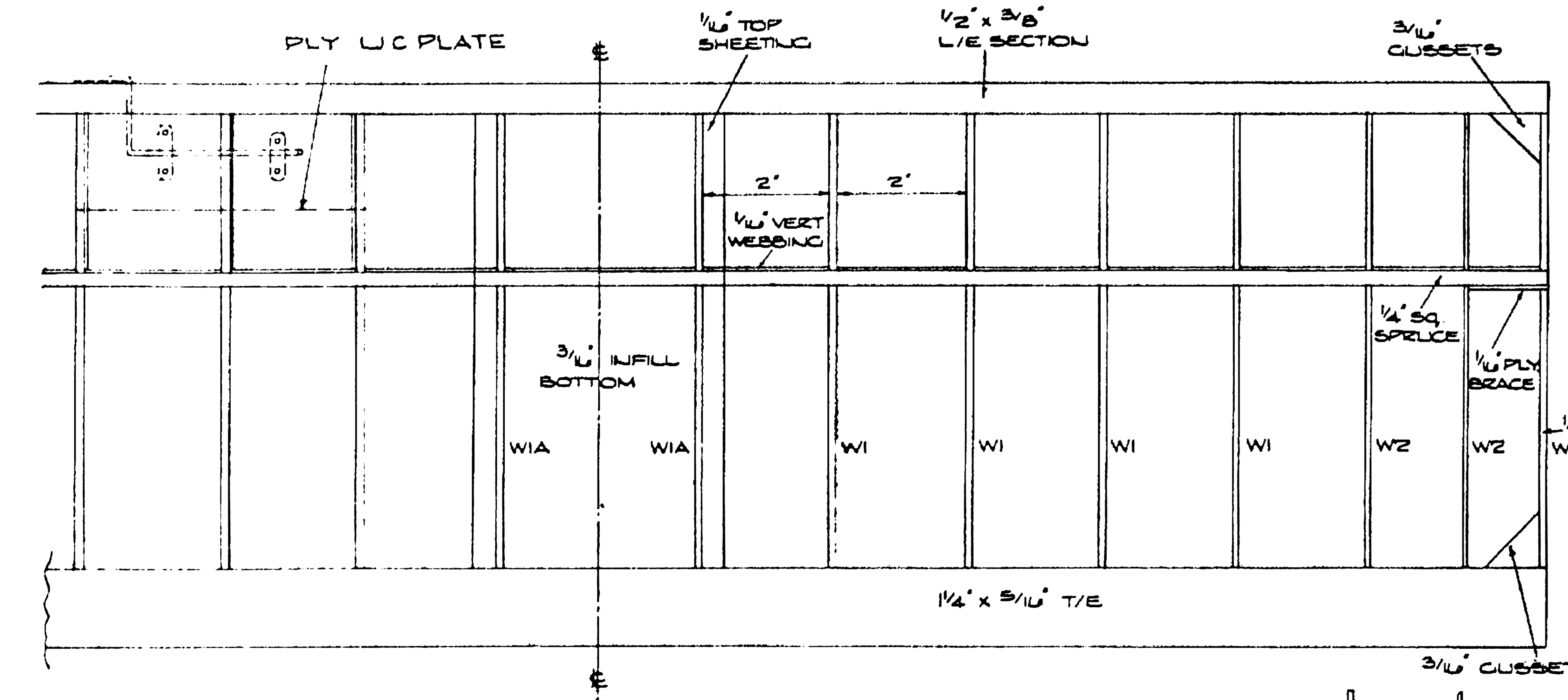
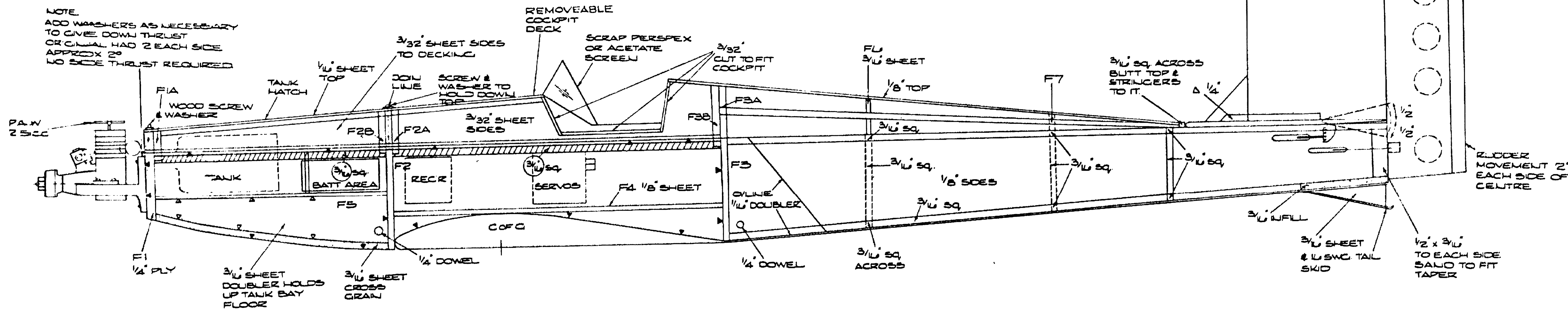


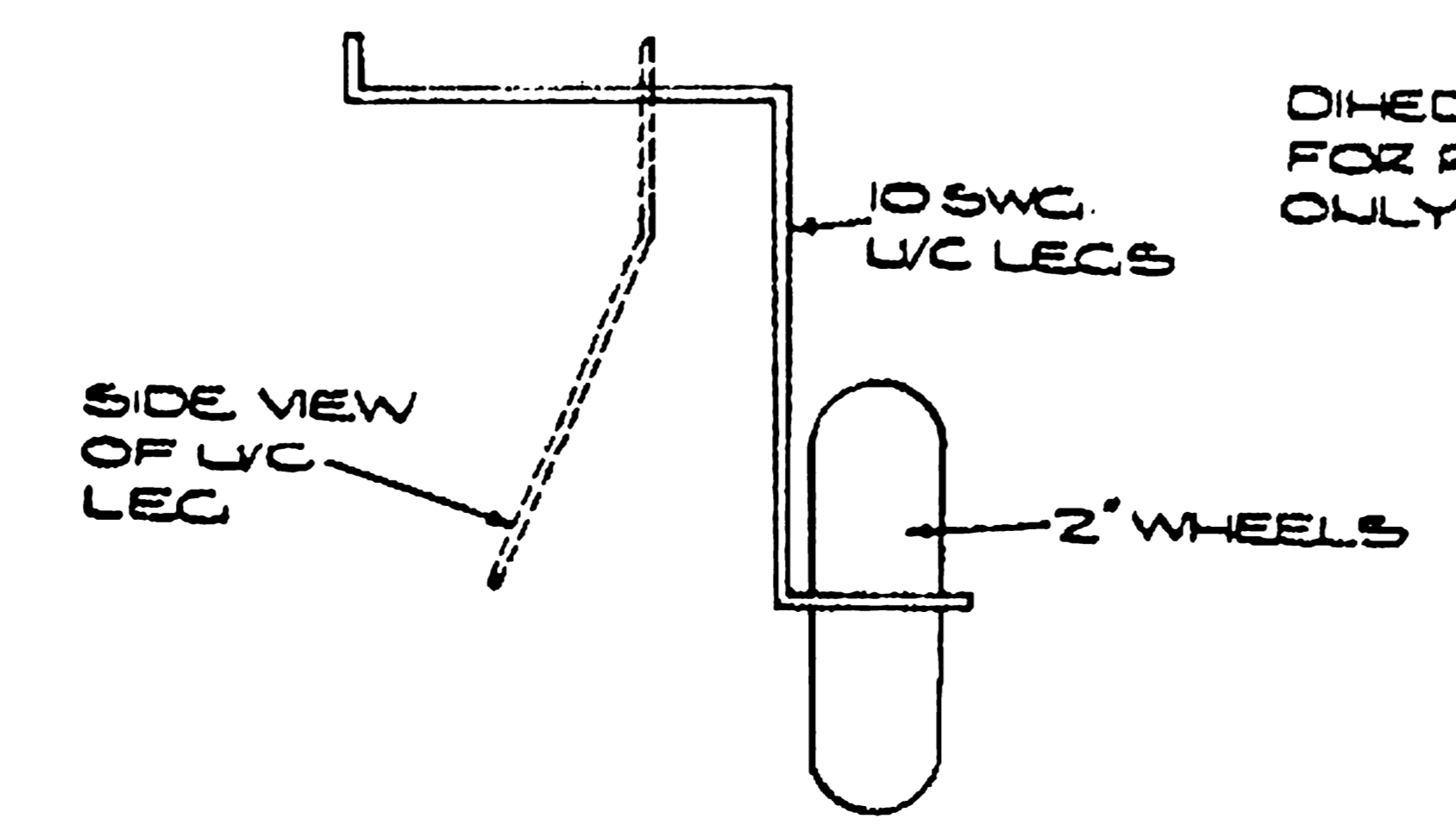
PLAN VIEW OUTLINE



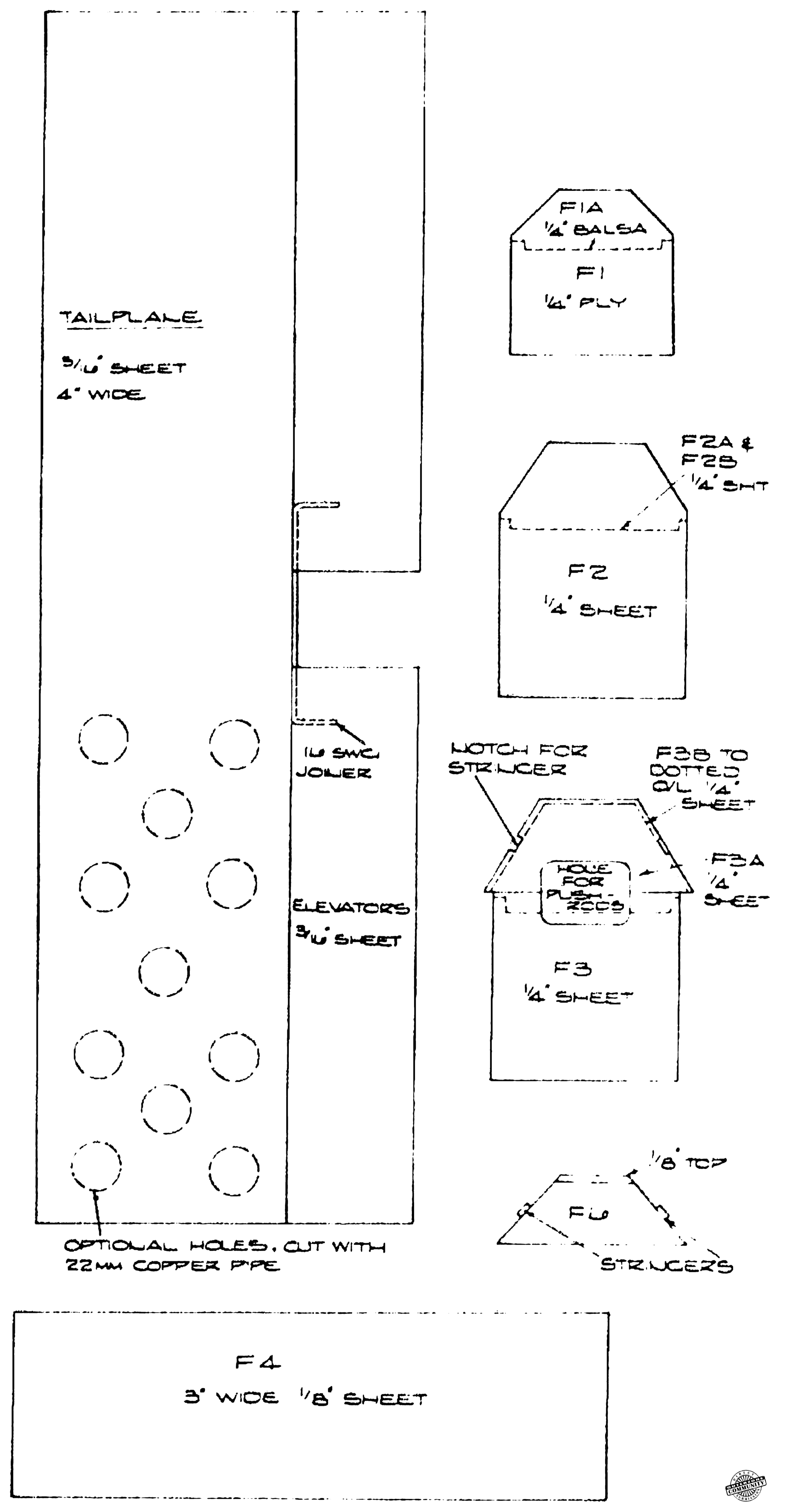
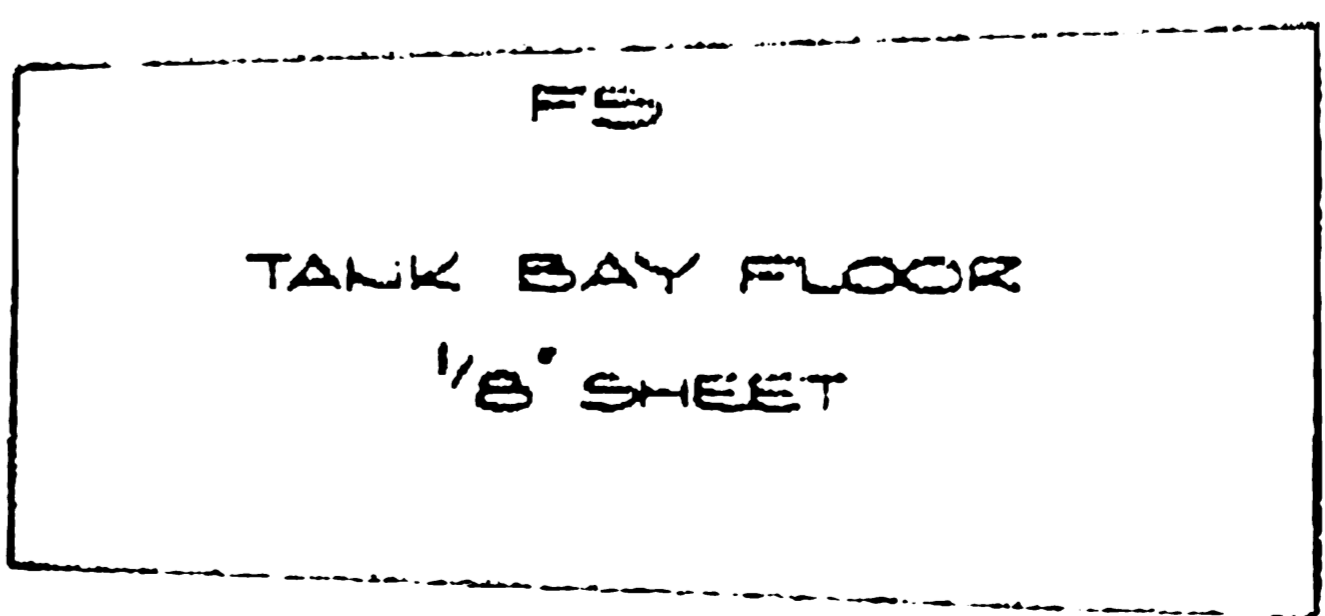
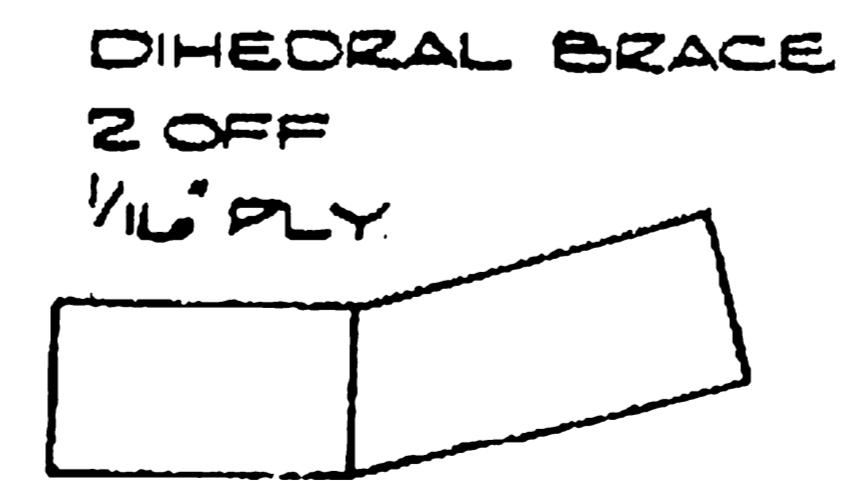
NOTE:  
ADD WASHERS AS NECESSARY  
TO GIVE DOWN THRUST  
OR CANCEL HAD 2 EACH SIDE  
APPROX 20  
NO SIDE THRUST REQUIRED



W1 - 1/8" RIBS (10 OFF)  
W2 - 3/32" RIBS (4 OFF)



DIHEDRAL ANGLE FOR RIBS ON TIPS ONLY



Model **WORLDWIDE** World PLAN SERVICE  
DAINTY MW2221  
Designed by Eric Strefford  
62in sports model for 2.49 diesel or 15-19 two stroke engines and 3 function radio