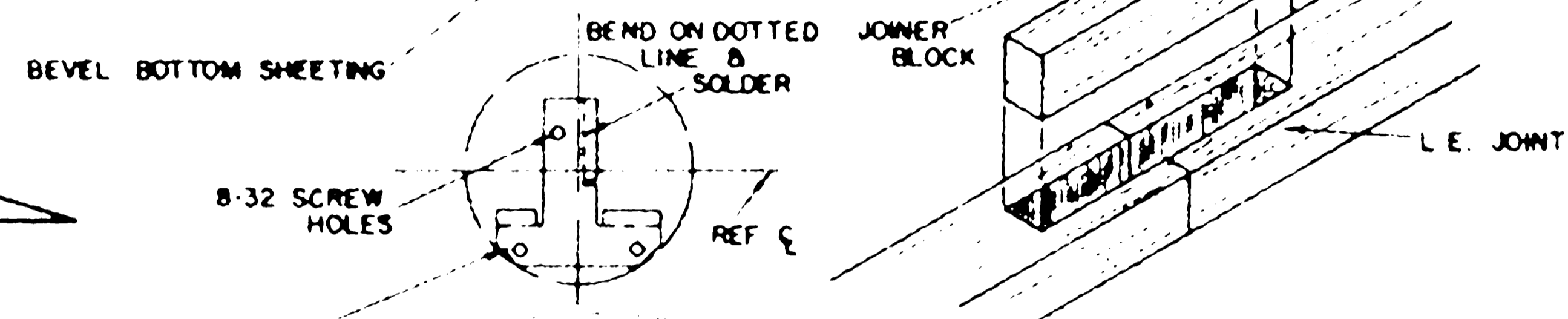
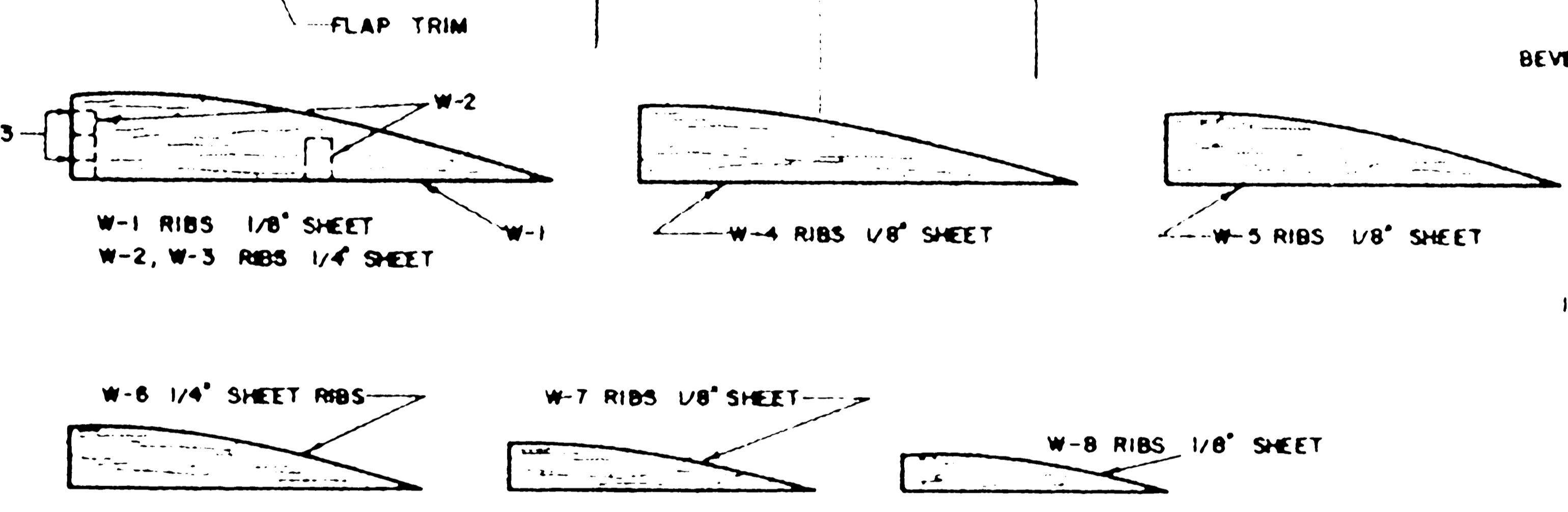
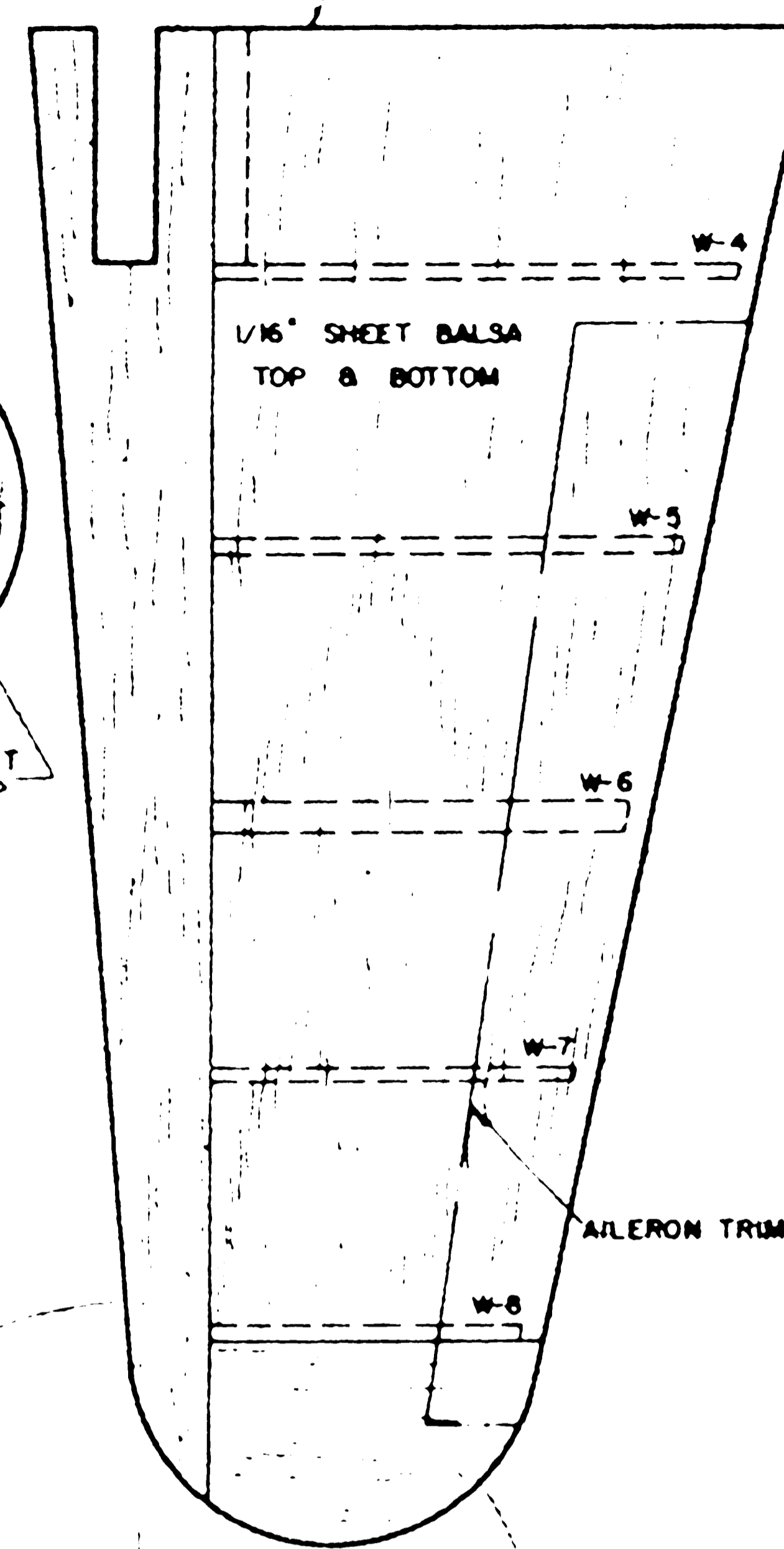
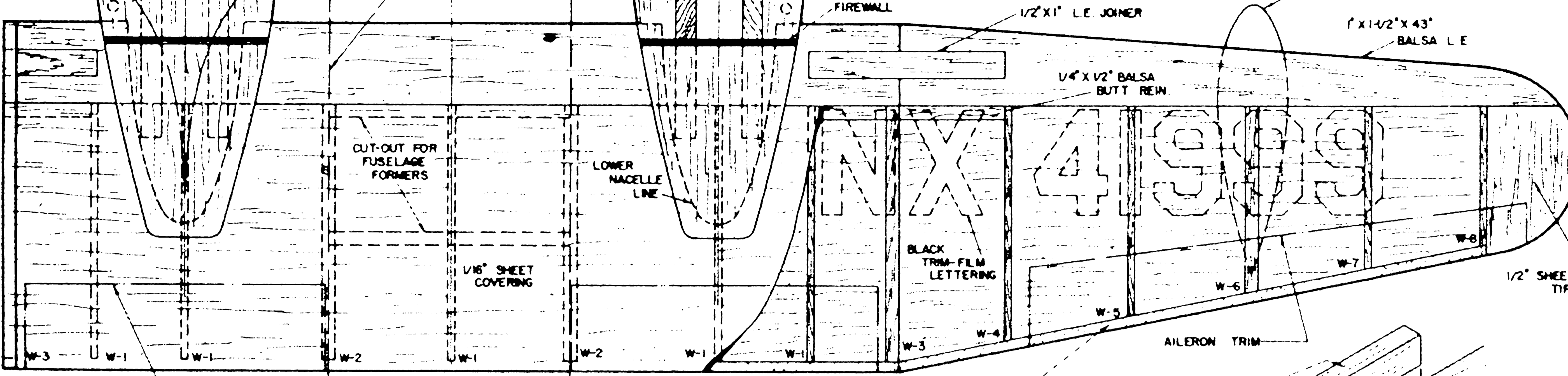


COWL TRIM  
 3/16 DOWELS TO POSITION COWL  
 FUSELAGE LINE

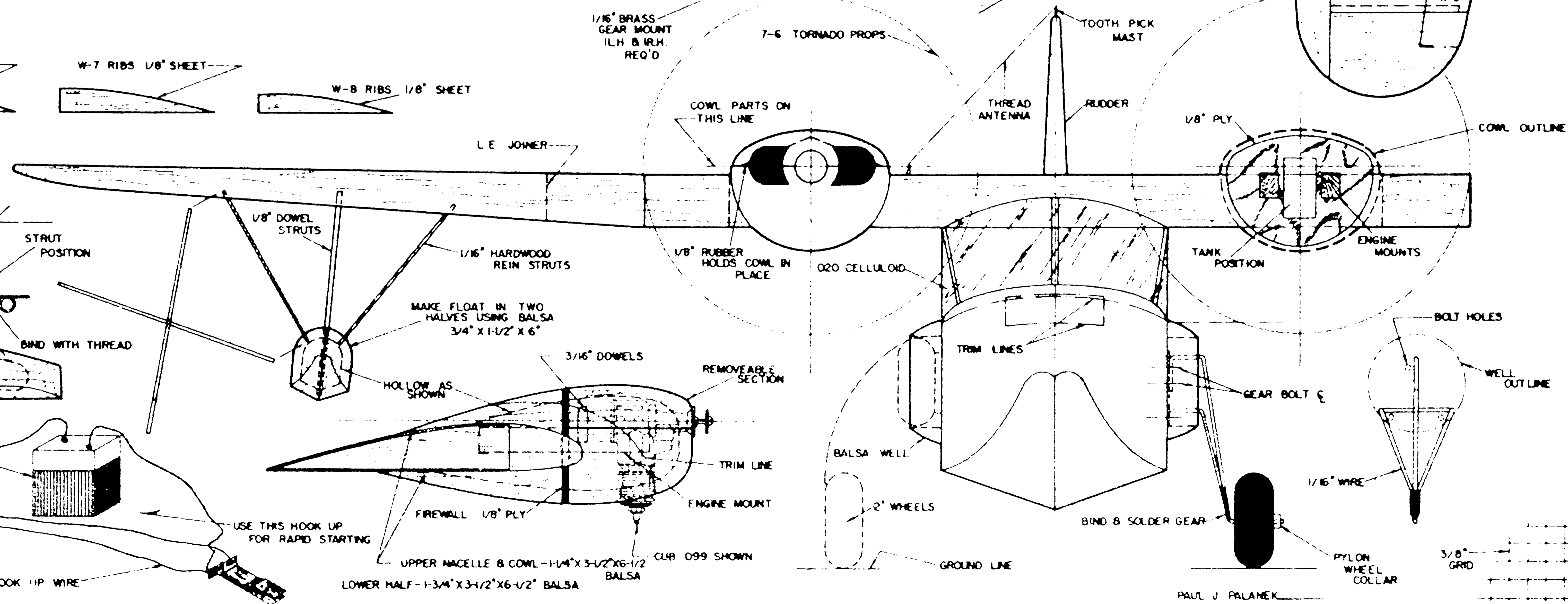
CUT-OUT FOR CYLINDER  
 HOLLOW AS SHOWN  
 NEEDLE VALVE HOLE  
 3/8" X 1/2" X 3-1/2" HARDWOOD MOUNTS

1/16" WIRE  
 1/16" HOLE  
 NEEDLE VALVE EXTENSION  
 TIP FLOAT POSITION

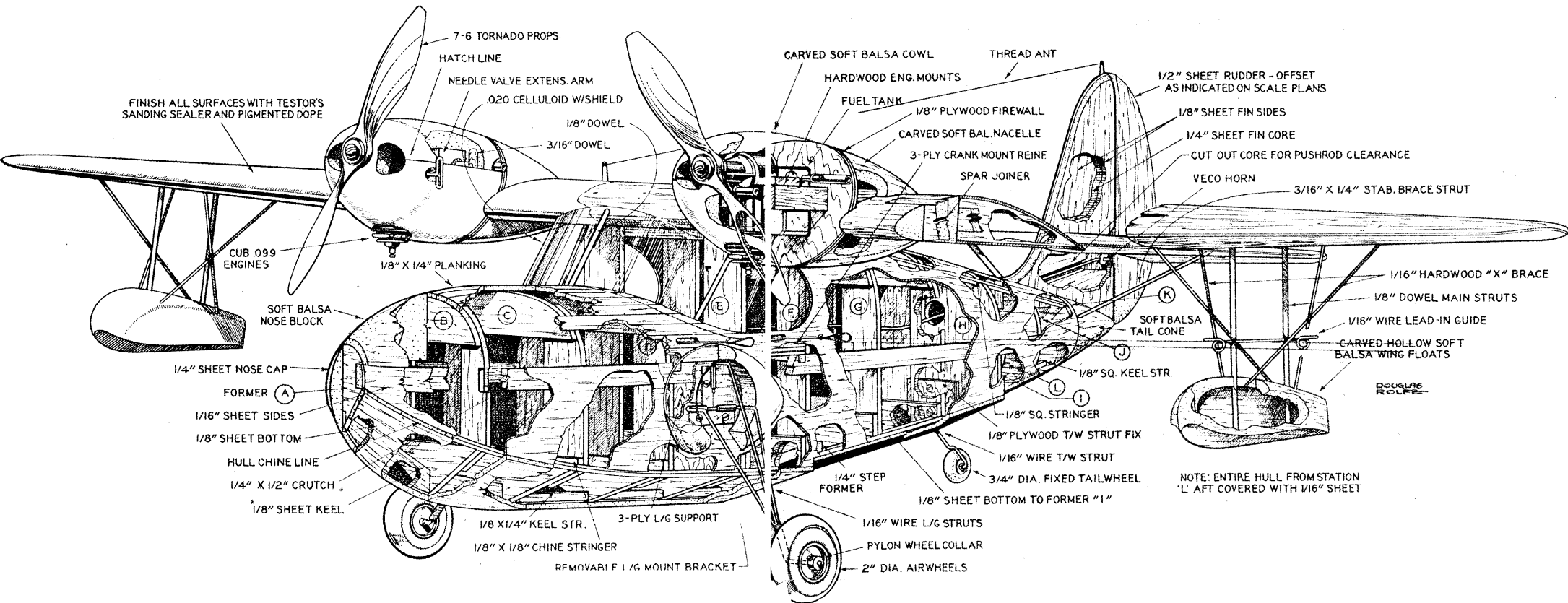
JOIN TO WING CENTER SECTION



1/16" BRASS GEAR MOUNT 1LH & 1RH. REQ'D  
 7-6 TORNAO PROPS



PAUL J. PALANEK



FINISH ALL SURFACES WITH TESTOR'S SANDING SEALER AND PIGMENTED DOPE

7-6 TORNADO PROPS.

HATCH LINE

NEEDLE VALVE EXTENS. ARM

.020 CELLULOID W/SHIELD

1/8" DOWEL

3/16" DOWEL

CUB .099 ENGINES

1/8" X 1/4" PLANKING

SOFT BALSA NOSE BLOCK

1/4" SHEET NOSE CAP

FORMER (A)

1/16" SHEET SIDES

1/8" SHEET BOTTOM

HULL CHINE LINE

1/4" X 1/2" CRUTCH

1/8" SHEET KEEL

1/8 X 1/4" KEEL STR.

3-PLY L/G SUPPORT

1/8" X 1/8" CHINE STRINGER

REMOVE 1/8" MOUNT BRACKET

CARVED SOFT BALSA COWL

HARDWOOD ENG. MOUNTS

THREAD ANT.

FUEL TANK

1/8" PLYWOOD FIREWALL

CARVED SOFT BAL. NACELLE

3-PLY CRANK MOUNT REINF.

SPAR JOINER

1/2" SHEET RUDDER - OFFSET AS INDICATED ON SCALE PLANS

1/8" SHEET FIN SIDES

1/4" SHEET FIN CORE

CUT OUT CORE FOR PUSHROD CLEARANCE

VECO HORN

3/16" X 1/4" STAB. BRACE STRUT

1/16" HARDWOOD "X" BRACE

1/8" DOWEL MAIN STRUTS

1/16" WIRE LEAD-IN GUIDE

CARVED HOLLOW SOFT BALSA WING FLOATS

SOFT BALSA TAIL CONE

1/8" SQ. KEEL STR.

1/8" SQ. STRINGER

1/8" PLYWOOD T/W STRUT FIX

1/16" WIRE T/W STRUT

3/4" DIA. FIXED TAILWHEEL

1/8" SHEET BOTTOM TO FORMER "1"

1/4" STEP FORMER

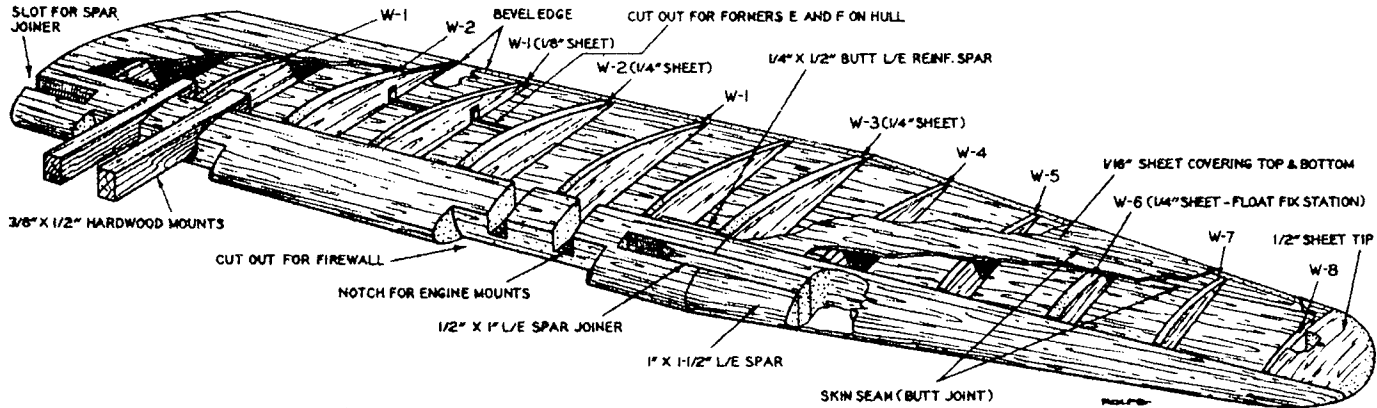
1/16" WIRE L/G STRUTS

PYLON WHEEL COLLAR

2" DIA. AIRWHEELS

NOTE: ENTIRE HULL FROM STATION 'L' AFT COVERED WITH 1/16" SHEET

DOUGLAS ROLFE



**Port Wing Construction**