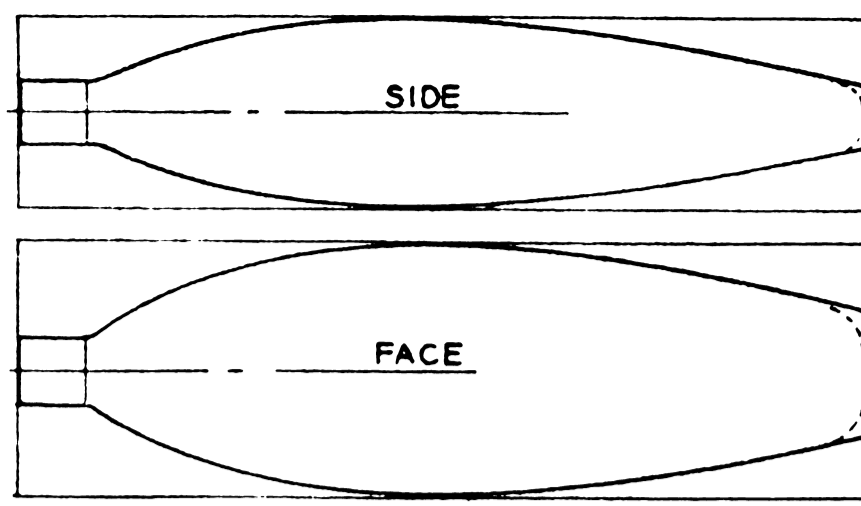


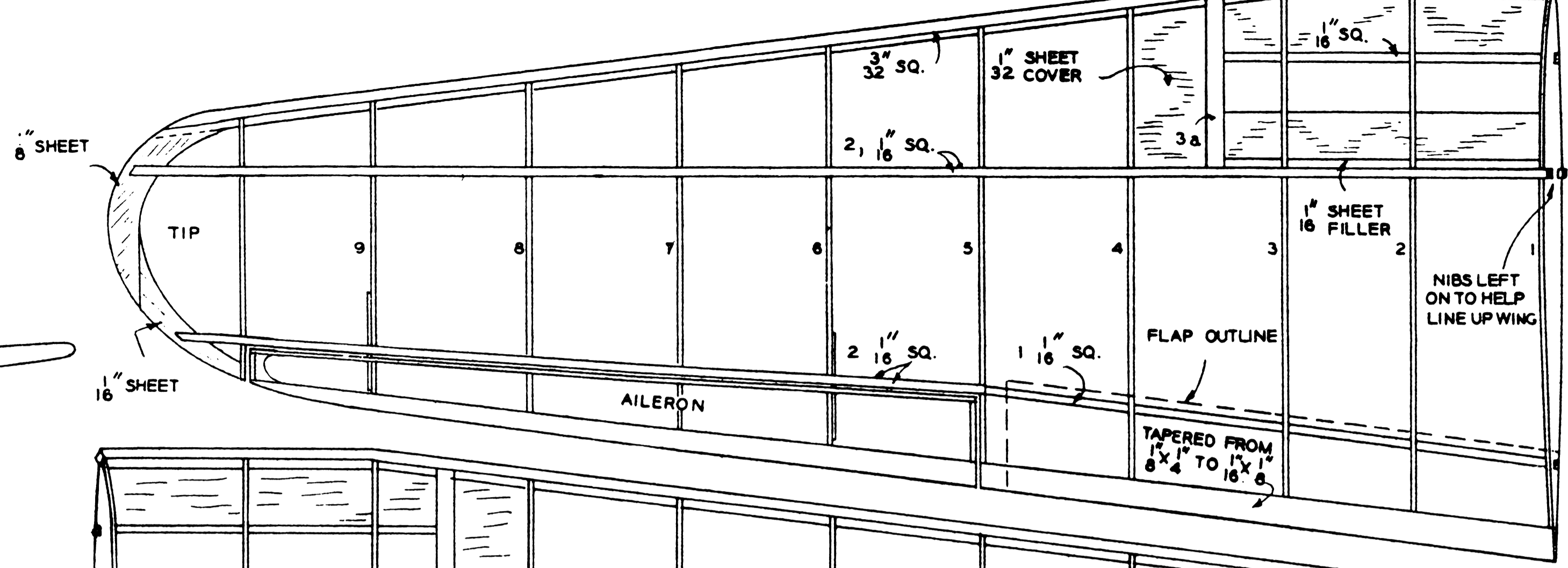
SPINNER FOR 3 BLADES

FLYING PROP
3 BLOCKS-
3/4 X 1/4 X 3/8

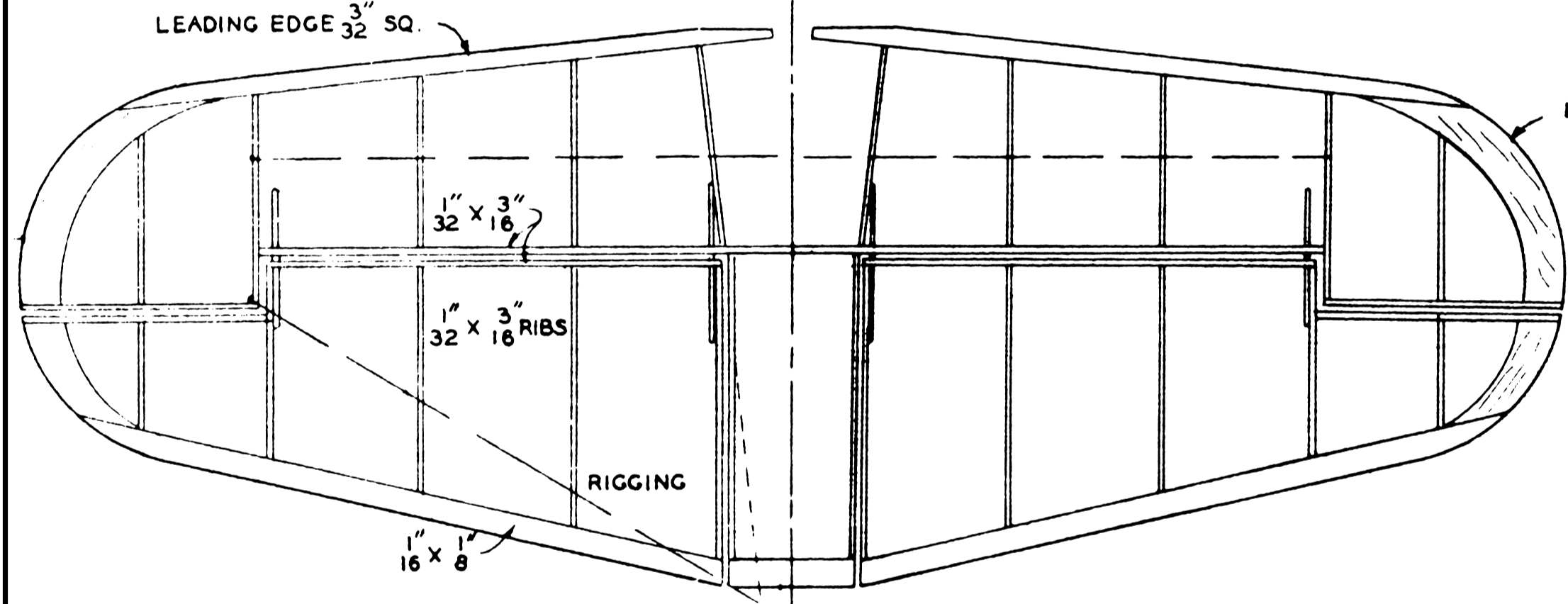


1/8 SHEET

1/16 SHEET

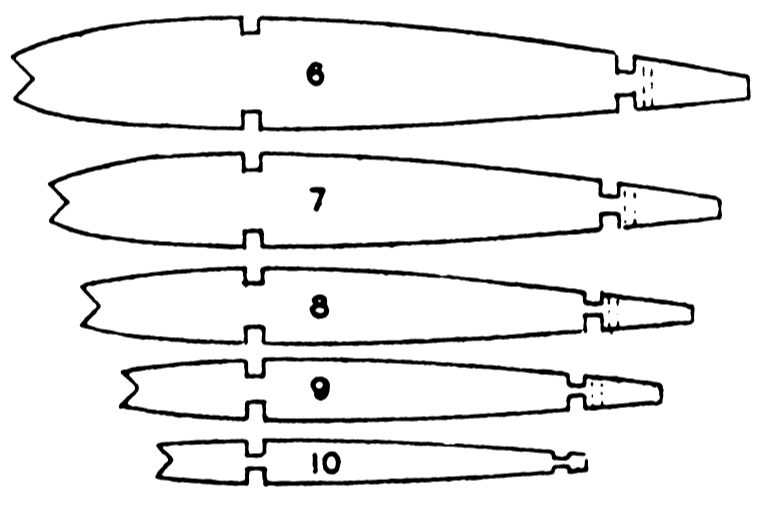
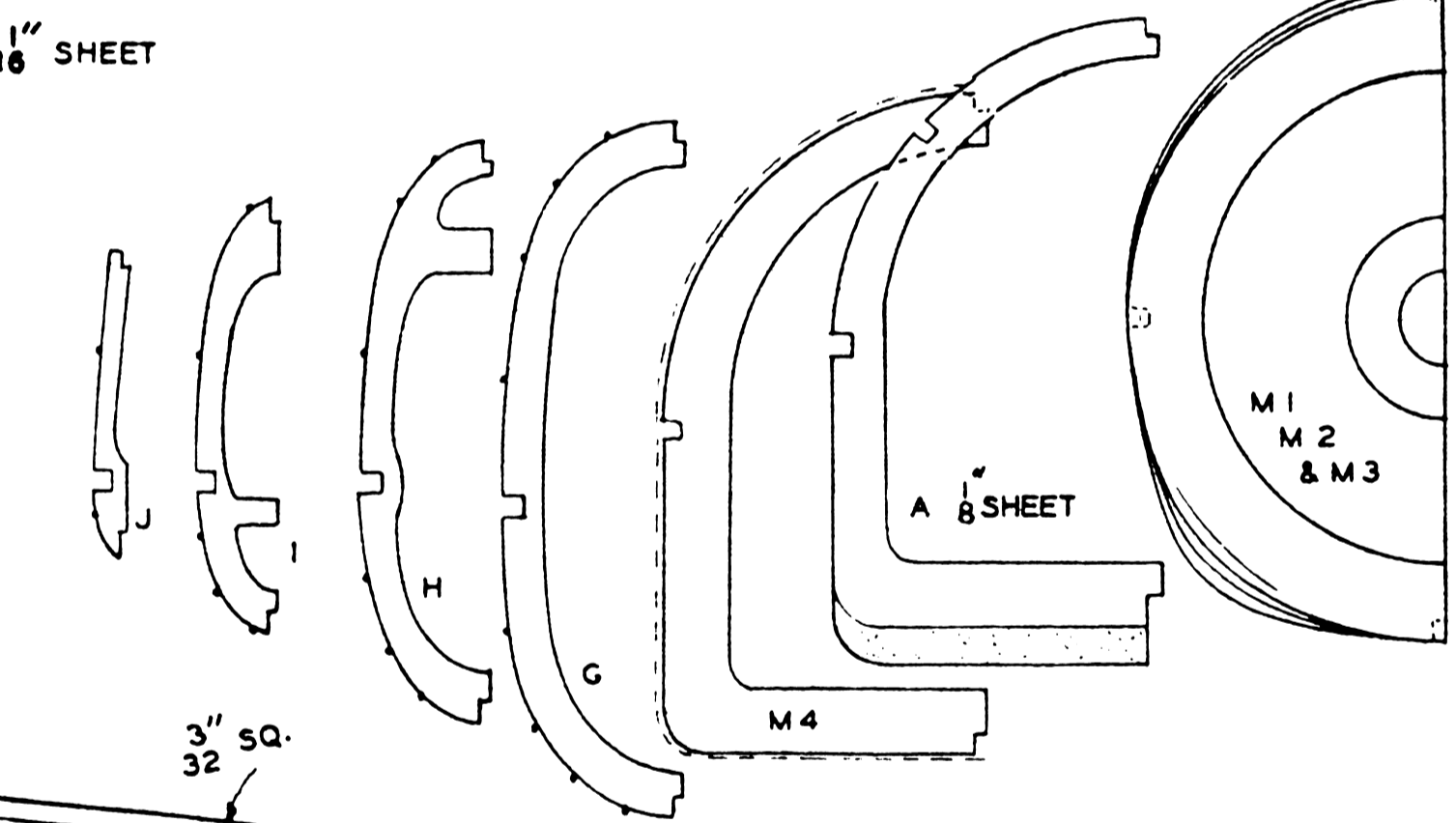


LEADING EDGE 3/32 SQ.

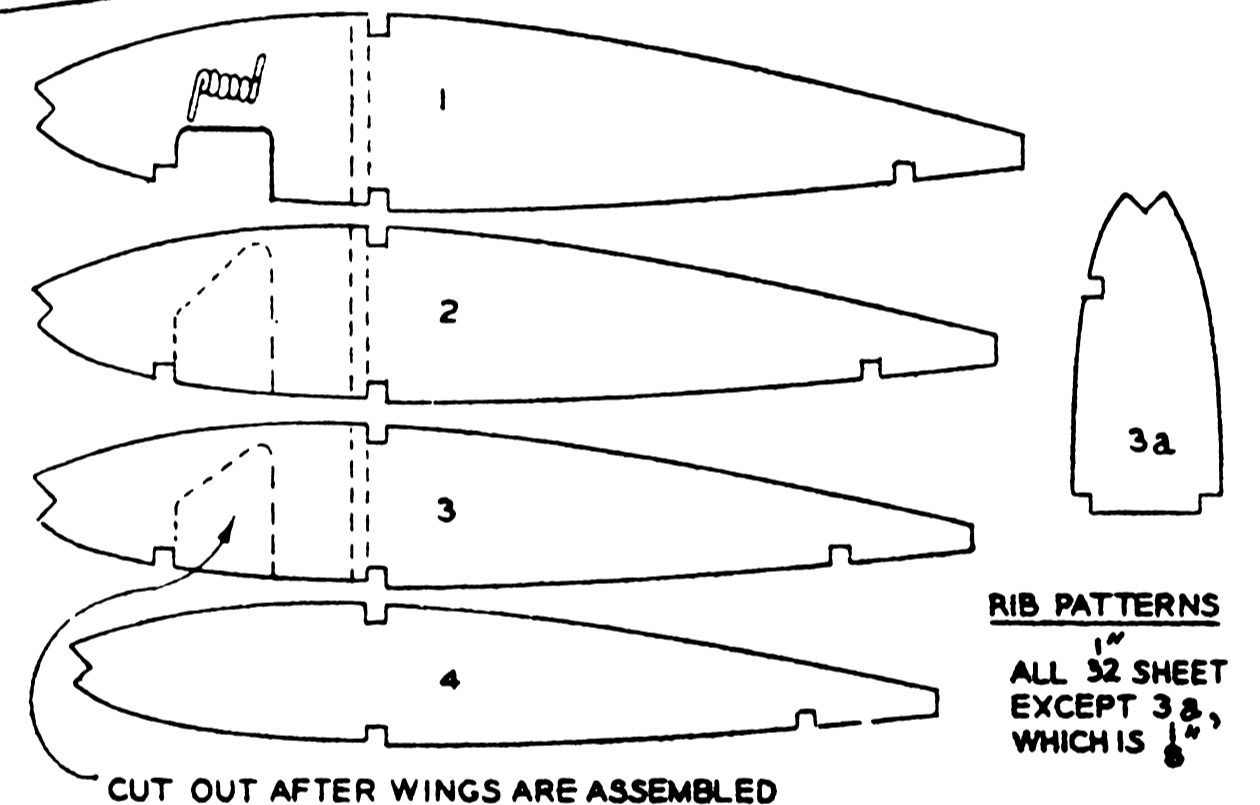
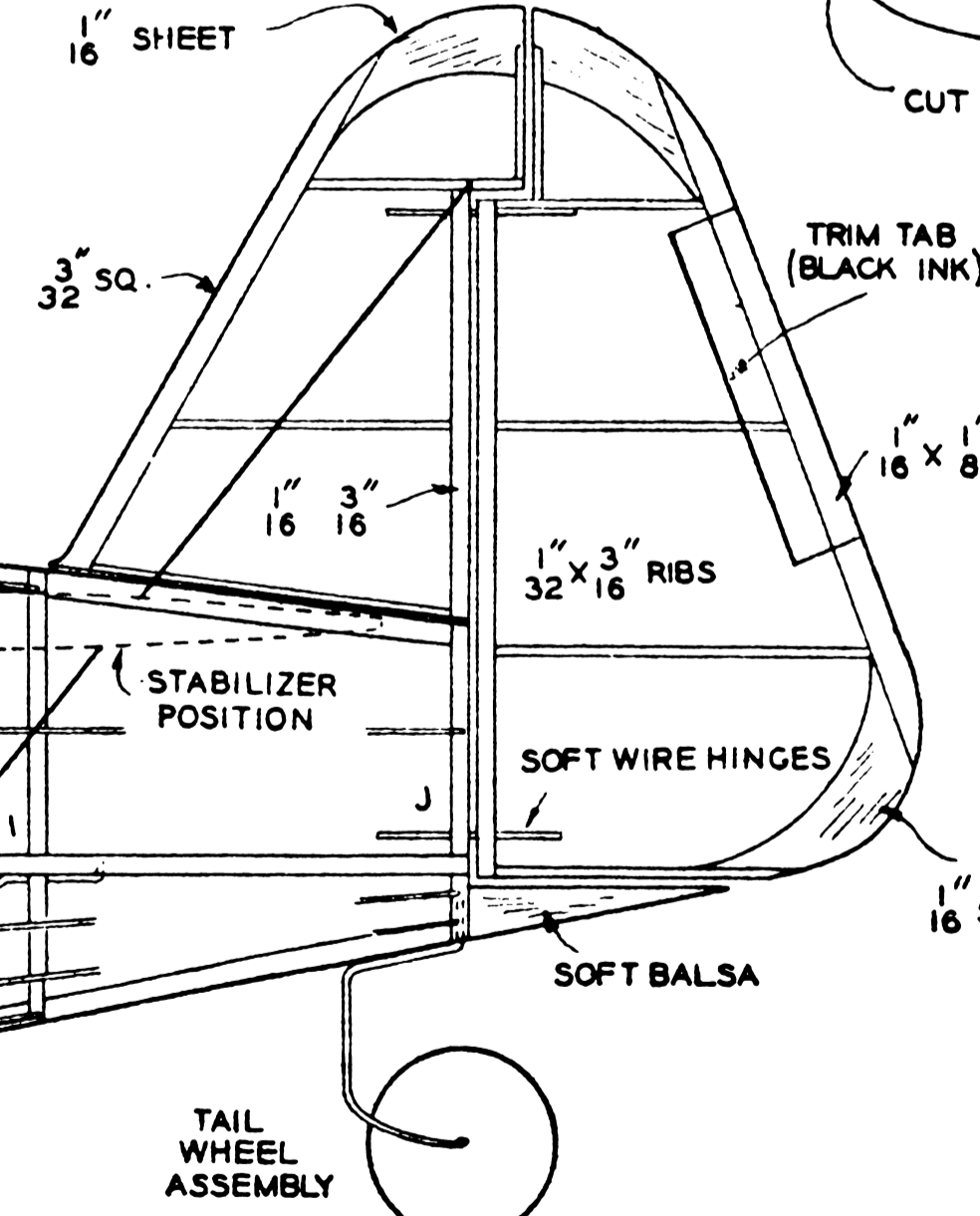


1/16 SHEET

3/32 SQ.

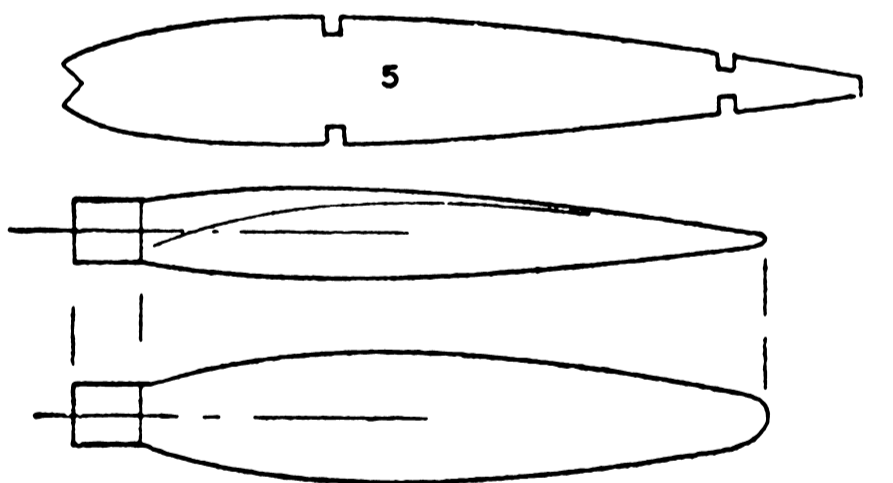


1/16 SHEET



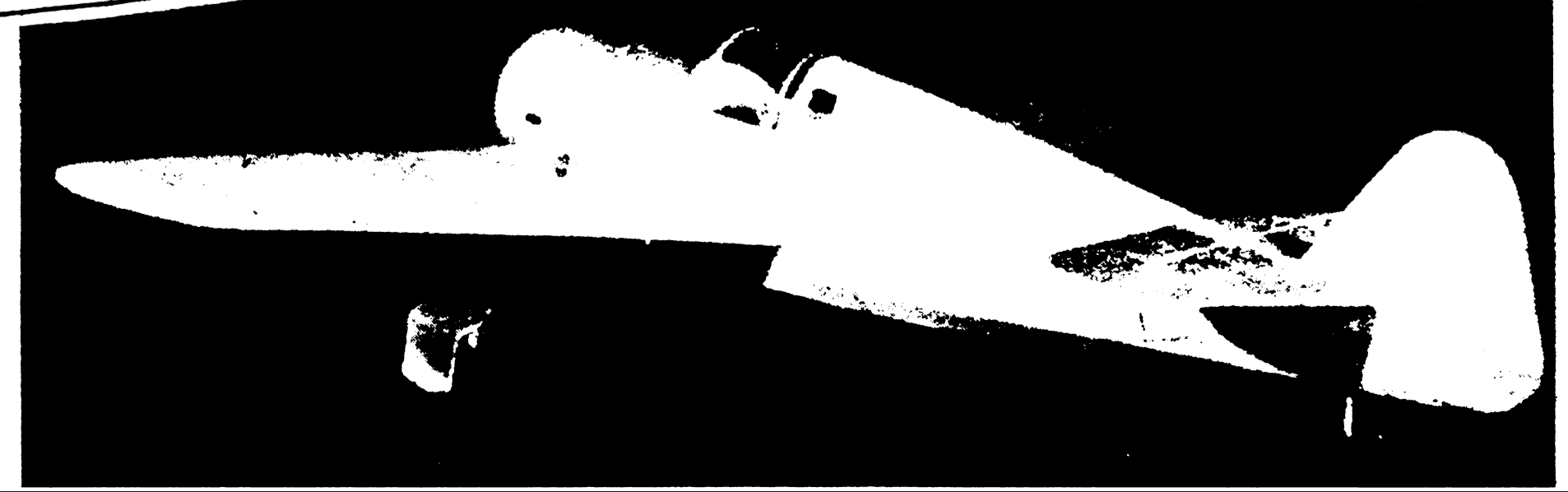
RIB PATTERNS
ALL 3/32 SHEET
EXCEPT 3a,
WHICH IS 1/8"

CUT OUT AFTER WINGS ARE ASSEMBLED



SCALE BLADE DESIGN
INTERCHANGEABLE WITH
FLYING BLADES

REAR AND
5" HOOK
ASSEMBLY



GOLDEN AGE REPRODUCTIONS

KOALHOVEN
FK-58

By ALAN D. BOOTON
AIR TRAILS

Dwg. 208

BILL HARVEY