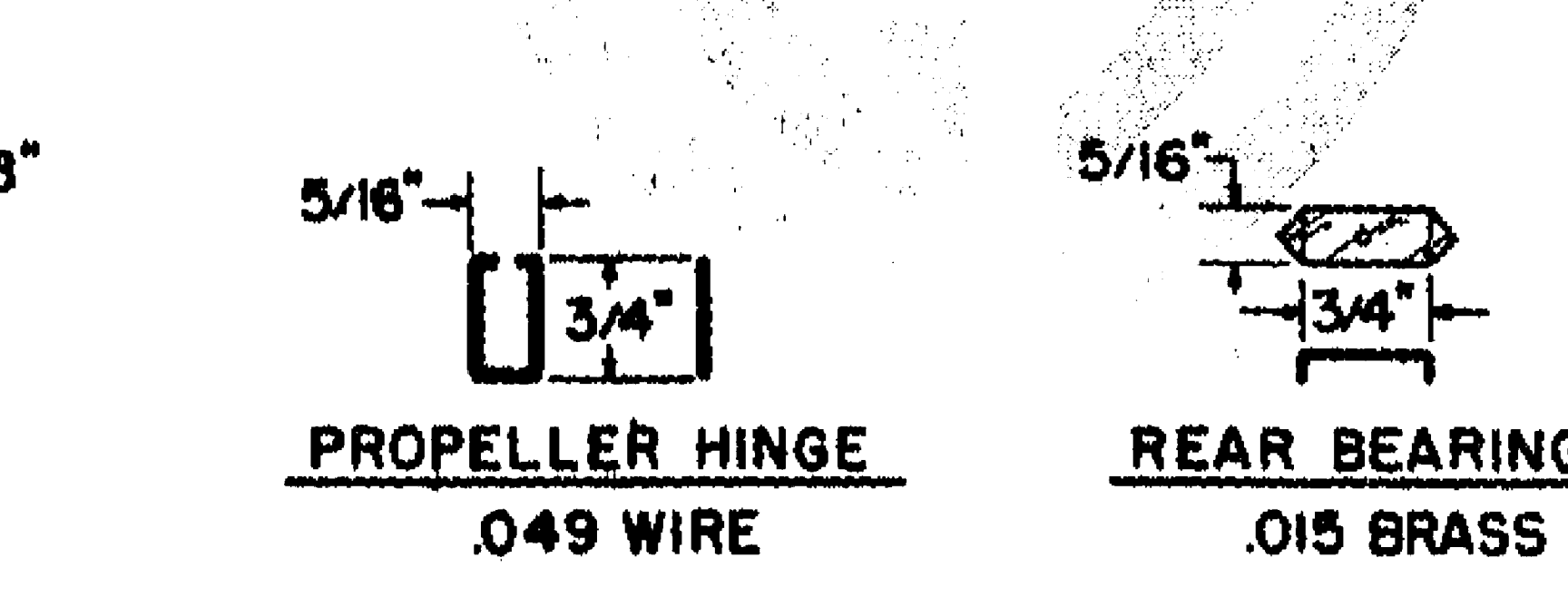
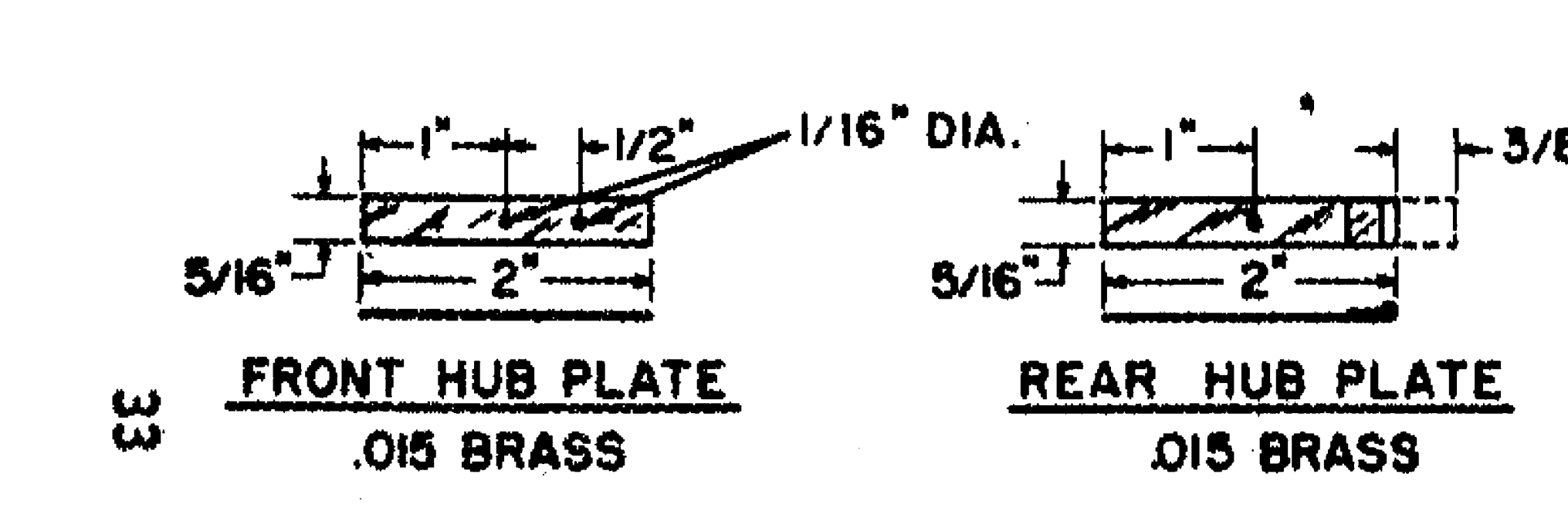
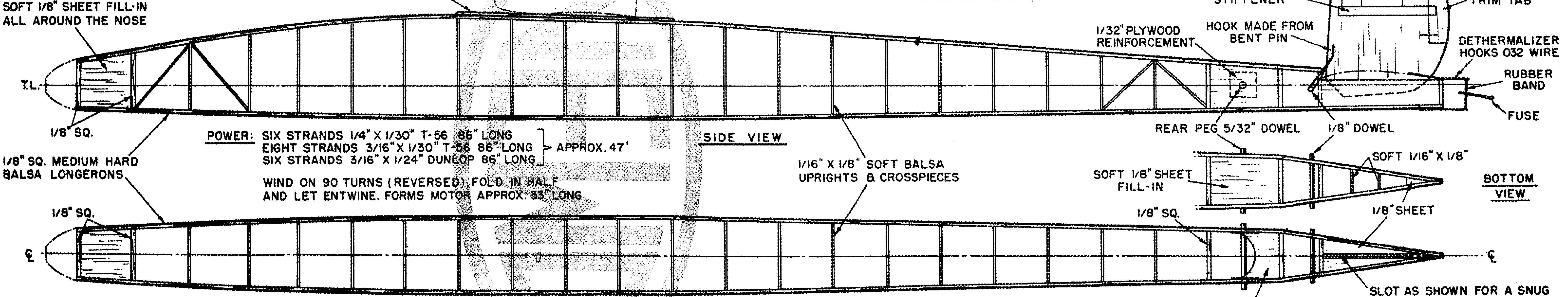
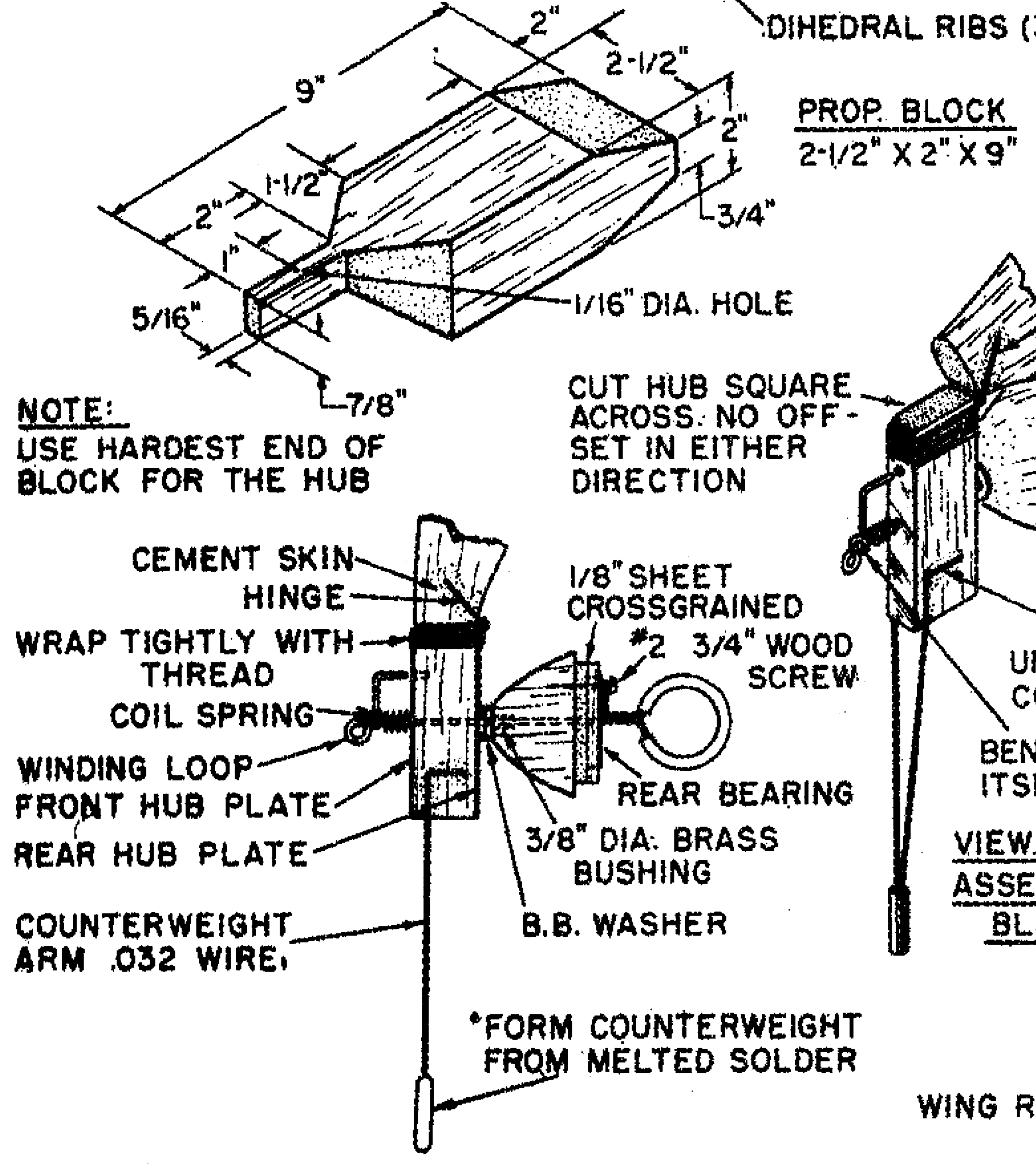
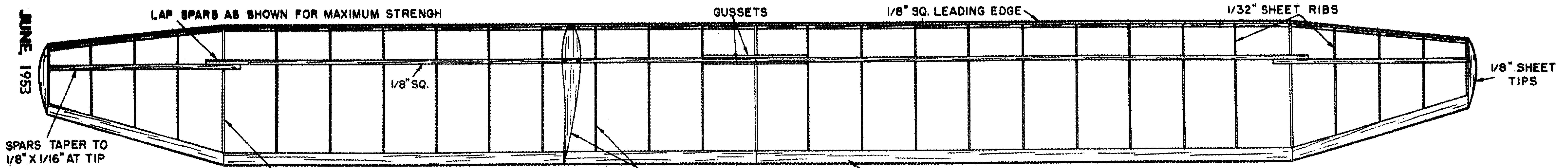
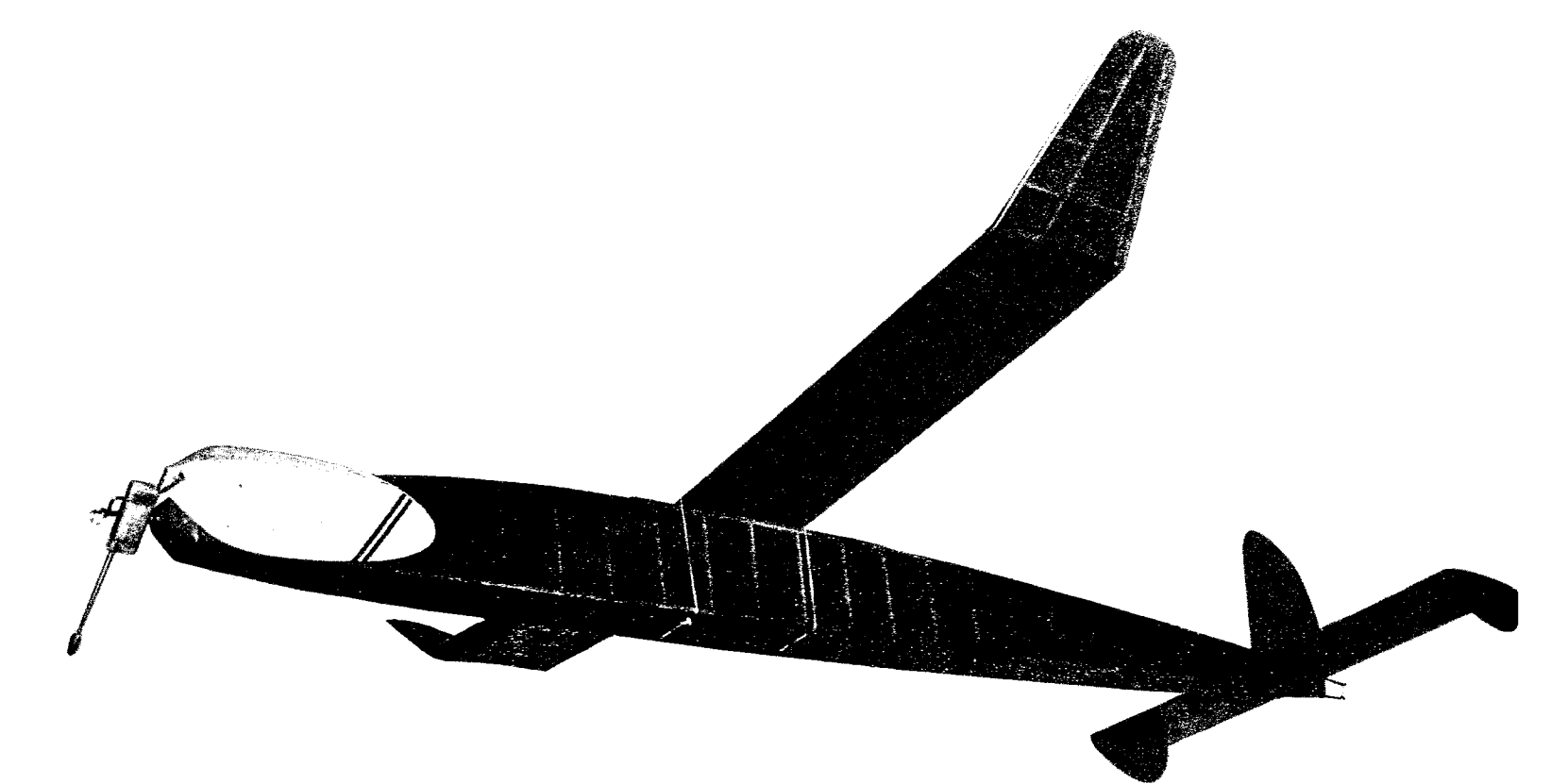


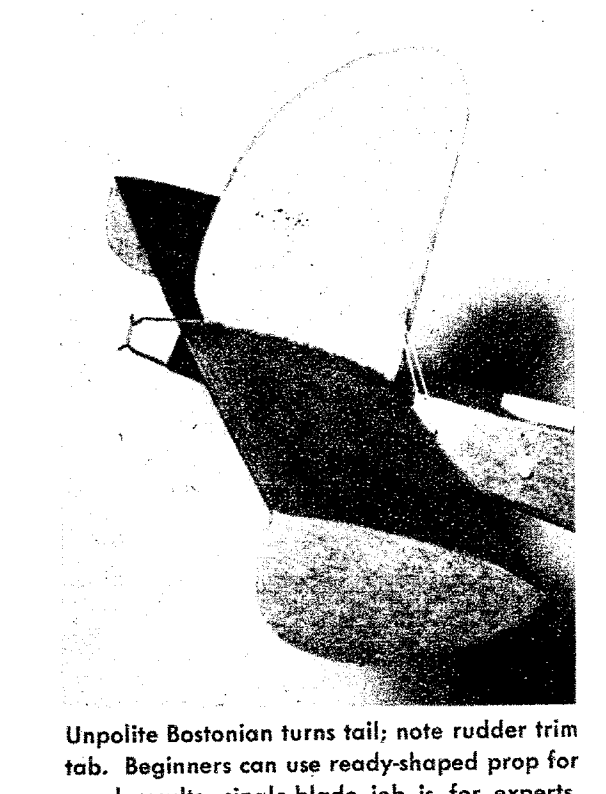
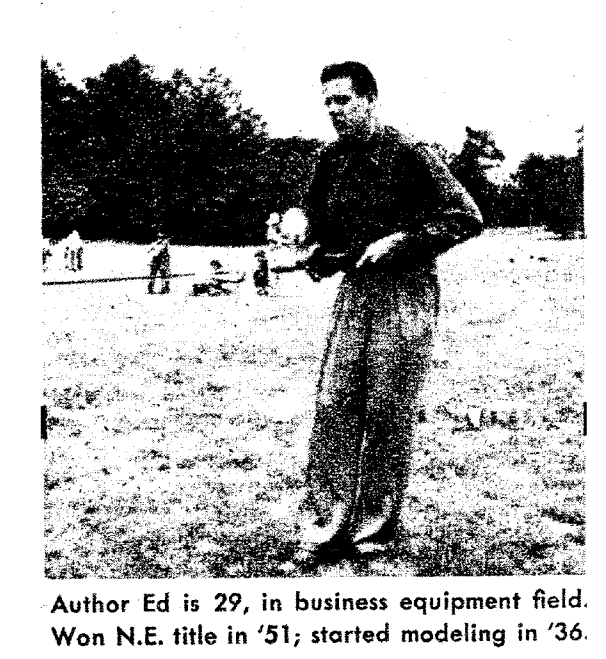
JUNE 1953



FOR THE NEW AMERICAN LIMITED RUBBER EVENT
THE BOSTONIAN
 Exactly the model you need for Plymouth events, AMA contests; this plane has already won in big meets



By EDWARD G. DOLBY
 With the active cooperation of the New England Wakefield Group, renowned designer-flyers and contest winners.



The new rubber rules will require a different airplane for contest goers. The 1953-54 limited rubber event allows a maximum of 200 square inches of lifting surfaces (wing and tail). This does not necessarily mean a small model; in fact, we have produced just the opposite, the largest airplane the rules would allow. The reason is that this type of model will win the meets because of the natural advantages of larger models. However, the new rules give us a model that can be more easily and quickly built, and is simpler for the average modeler to fly. This model incorporates all these features as well as a good-size fuselage, which is the trend in design, for those who want to go ahead and add more power and still have an airplane that will be able to take it in its stride, with a minimum of adjusting.

The New England Wakefield Group has tried, tested and suggested many of the features incorporated in the Bostonian. It is truly a "Boston model," which means that possible rough weather has to be considered in the design. For this reason the ship will perform equally well in all kinds of weather. Medium wood of even strength is used throughout unless otherwise specified.

Complete construction details are available on the full-size plans.

Bill of Materials
 (All balsa, and 36" long unless indicated otherwise)

10 pcs. 1/8" sq. medium	11 pcs. 3/8" x 1/16" medium	2 pcs. 3/32" x 3/8" tapered T.E. medium	2 pcs. 3/32" x 3/8" sheet medium	1 1/16" x 2" x 18" medium	1 pc. 1/4" x 3" x 18" soft	1 pc. 3/32" x 3" x 12" soft	2 1/2 sheets light model tissue	1 prop block 2 1/2" x 2" x 9" soft	Miscellaneous: 1/32" plywood, brass sheet, wire, dowels, ball bearing, spring, rubber tubing, med. face bushing, solder.
-------------------------	-----------------------------	---	----------------------------------	---------------------------	----------------------------	-----------------------------	---------------------------------	------------------------------------	--