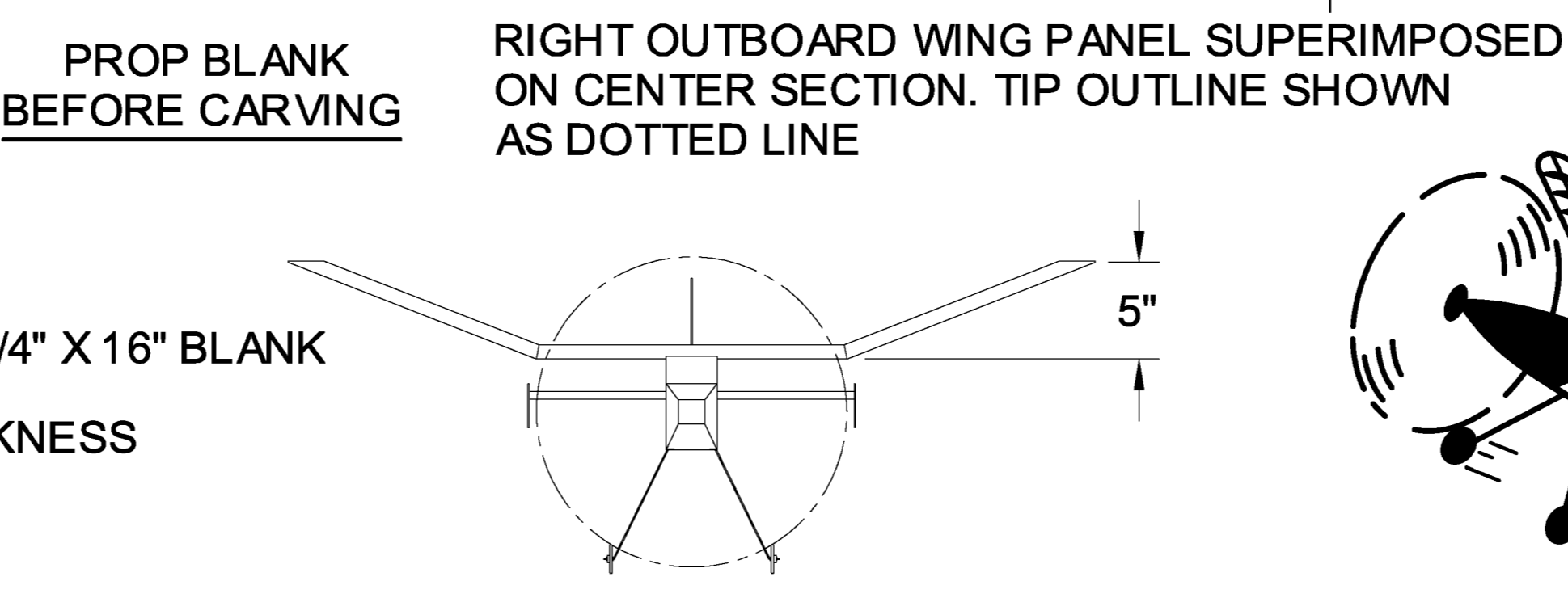
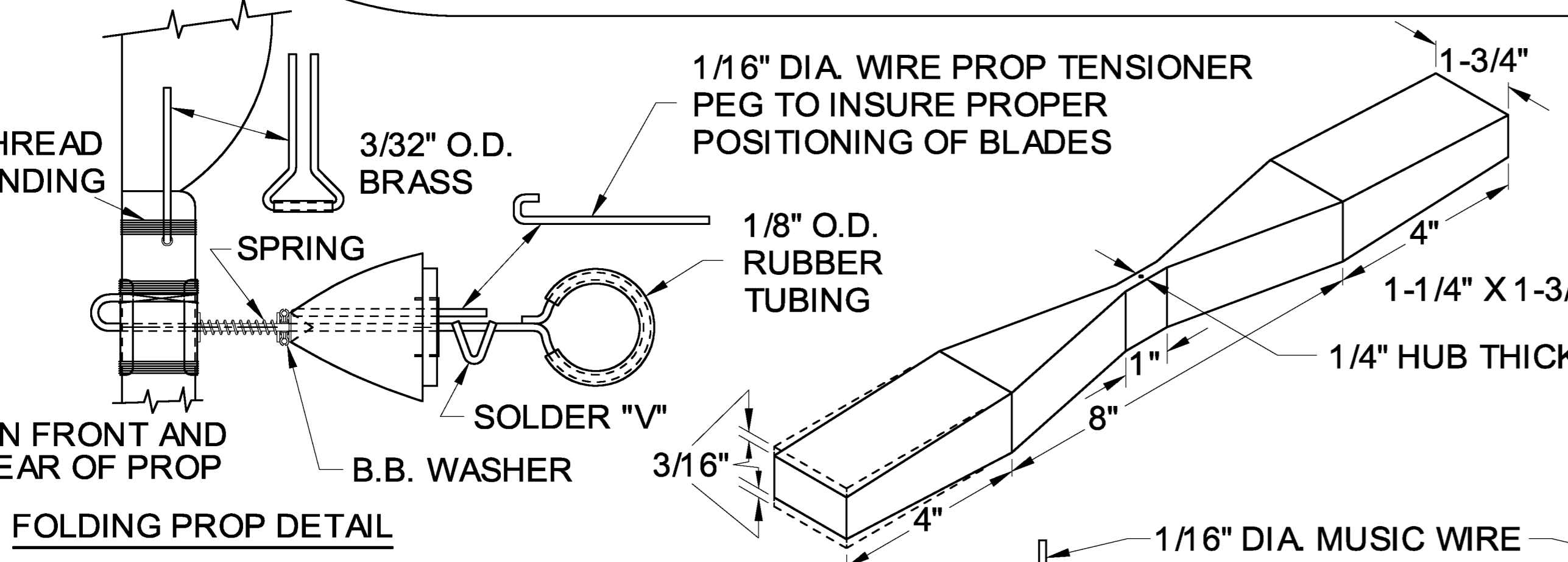
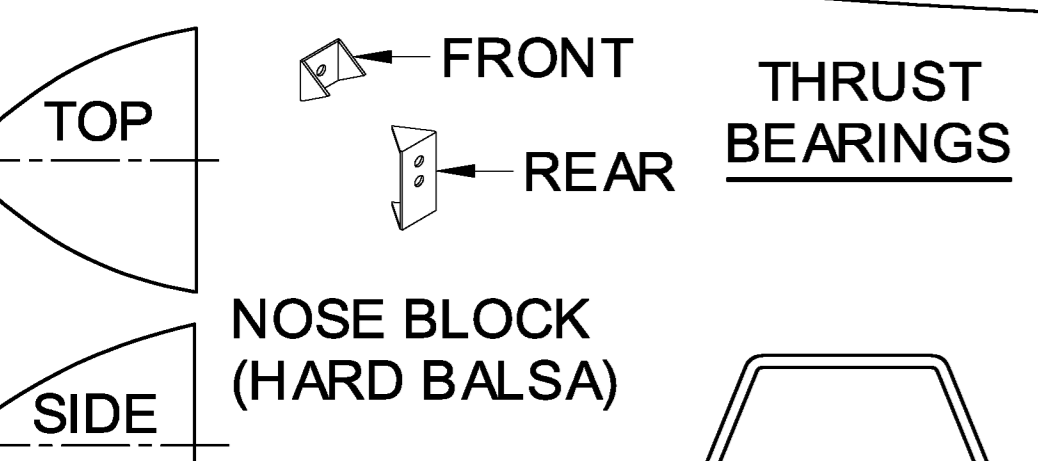
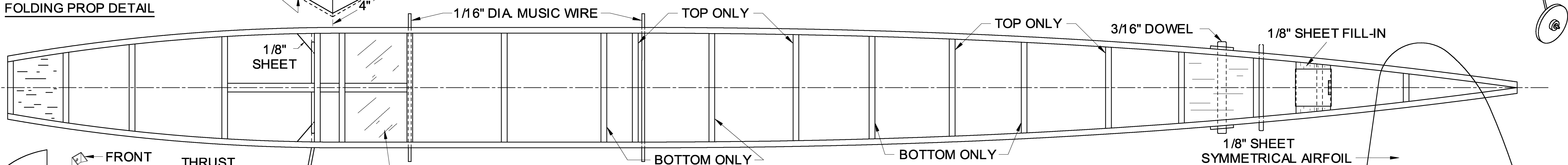
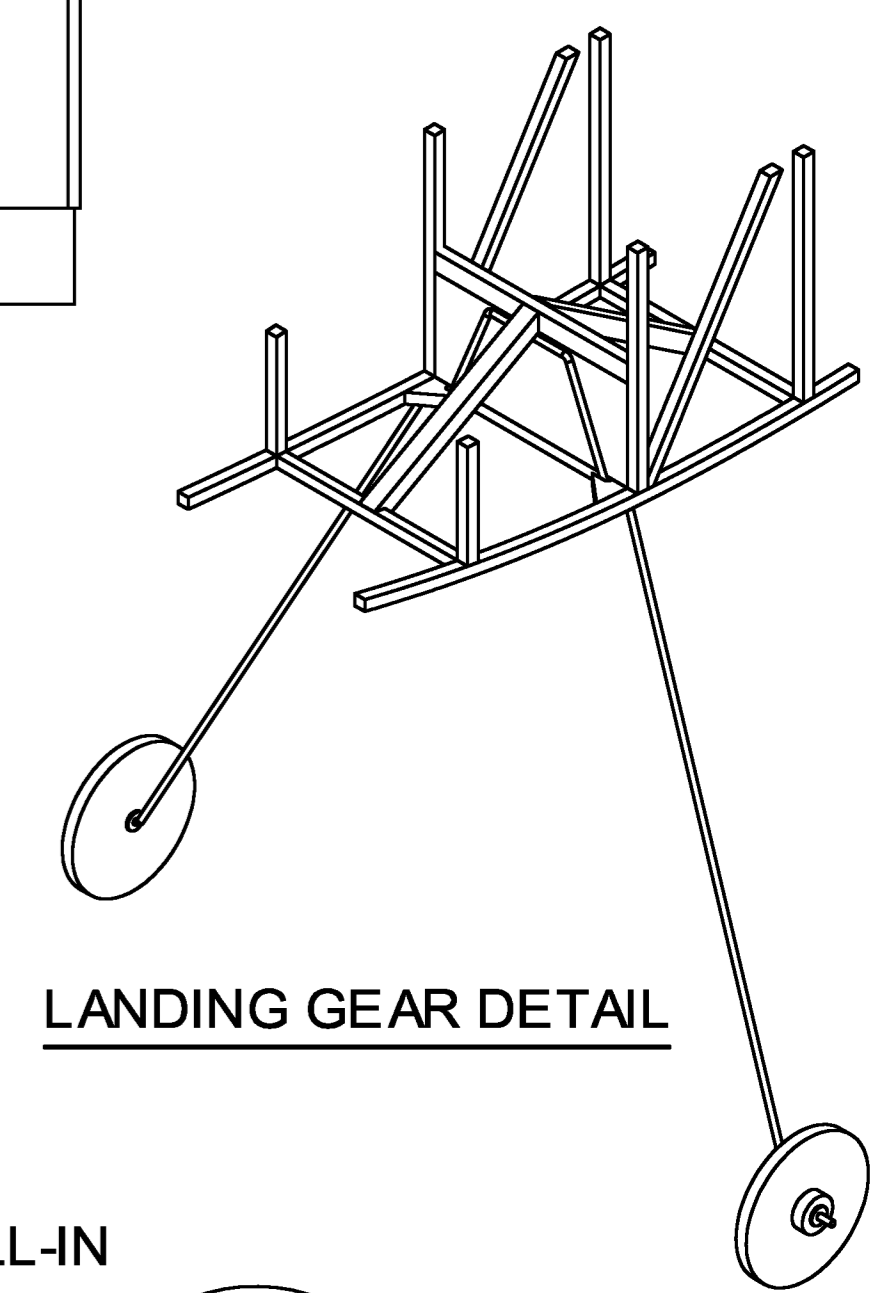


ENTIRE MODEL COVERED WITH JAP TISSUE AND GIVEN 3 COATS OF DOPE

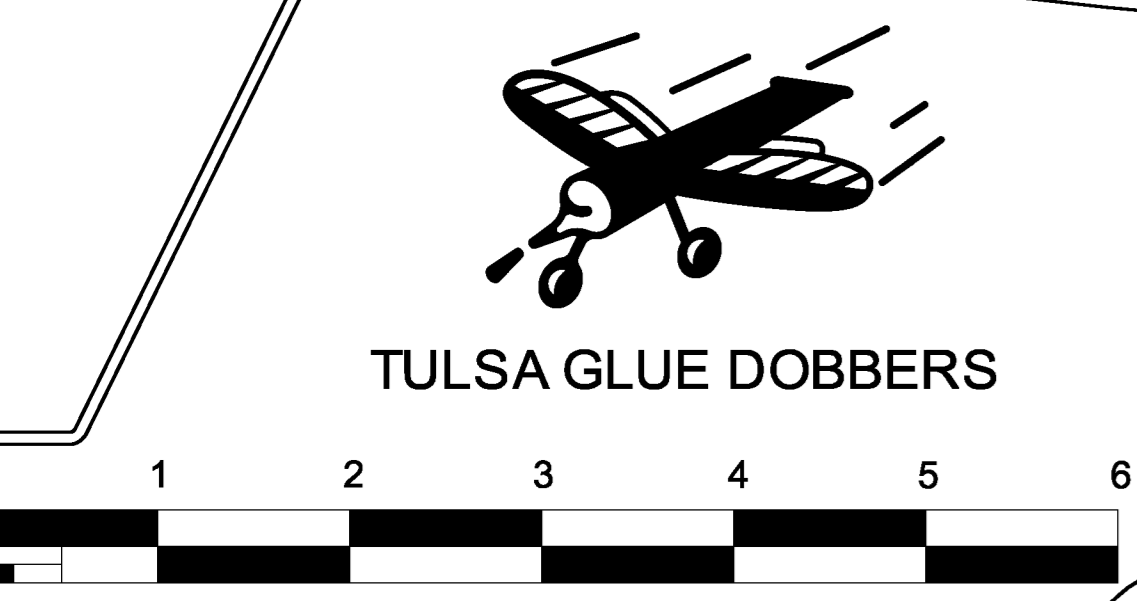
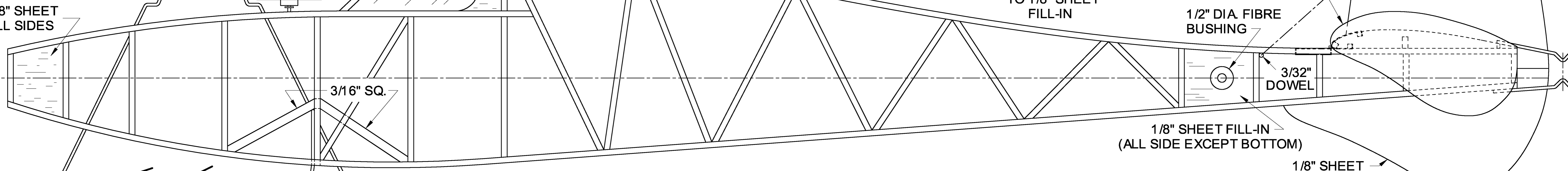
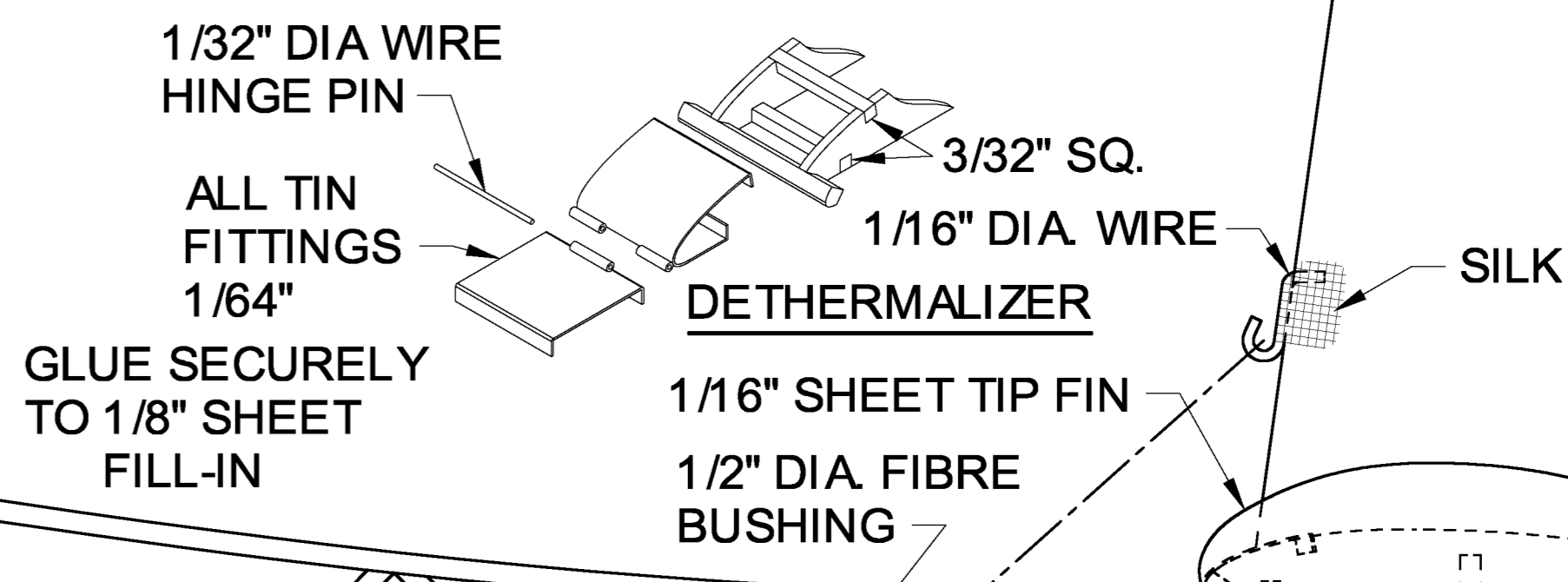


GLUE LANDING GEAR WIRE SECURELY TO 1/8" SHEET FILL-IN. COAT LIBERALLY WITH 3-4 COATS OF GLUE

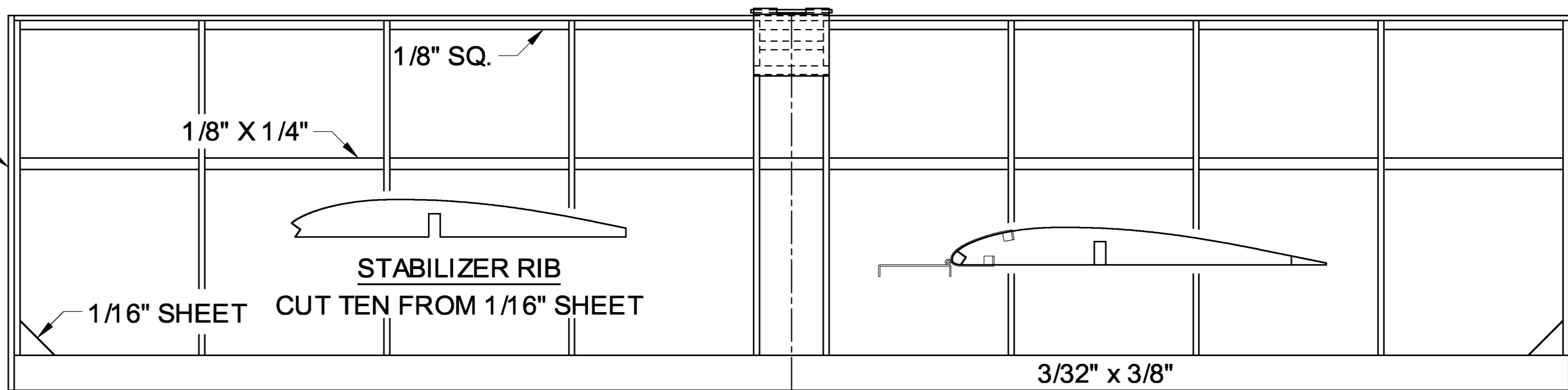
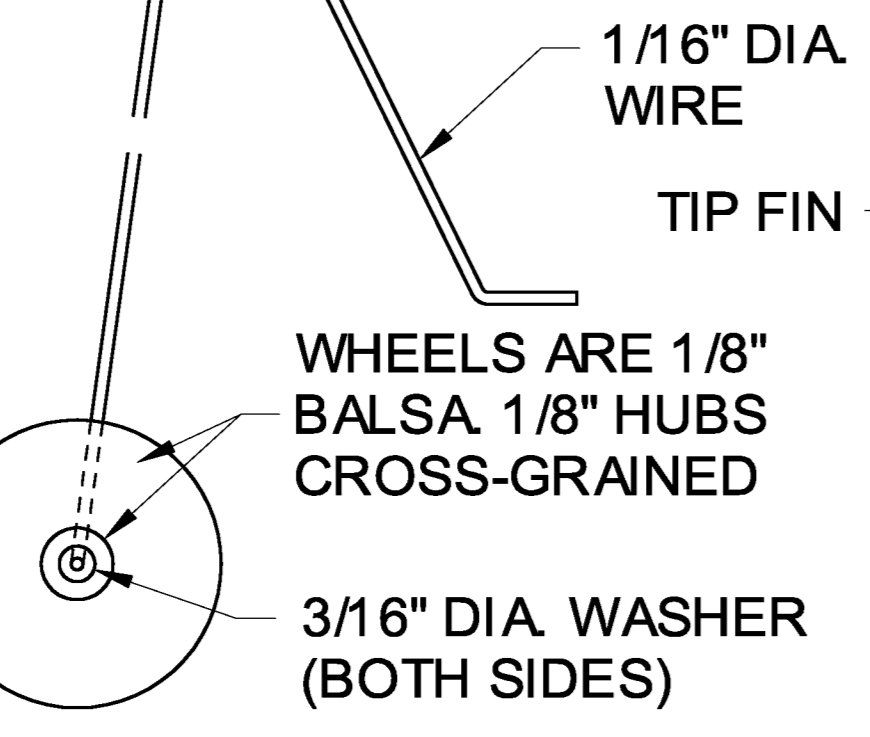


USE 24 STRANDS 3/16" FLA BROWN (T-56) RUBBER LENGTH APPROXIMATELY 33". SHOULD SAFELY TAKE 800 OR 900 TURNS

FUSELAGE LONGERONS 1/8" SQ. HARD CROSS BRACES 1/8" SQ. MED. HARD



ALL AMERICAN RUBBER MODEL BY: ROBERT DUNHAM Air Trails Model Annual 1952



DETHERMALIZER FUSE, 1/8" DIA. CORD SOAKED IN SALTPETER SOLUTION FOR 15 MIN. USE RUBBER BAND TO SECURE. USE SHORT PIECE OF THREAD TO STOP STABILIZER TRAVEL. THIS ANGLE SHOULD BE ABOUT 30 TO 40 DEGREES FOR SLOWEST DESCENT.

ACTUAL WING AREA: 210.22 SQ. IN. ELEVATOR AREA: 68 SQ. IN. FUSELAGE X SECTION: 12.63 SQ. IN. MEETS ALL WAKEFIELD REQ. BEST OFFICIAL TIME: 10:23.6 BEST UNOFFICIAL TIME: 50:20

DRAWN BY JOE D. KEHR Cad By Gene Rock 2-2005