

ALL LONGERONS AND BRACING MEMBERS IN FUSELAGE OF 16 SQ. MEDIUM GRADE Balsa

EACH CABANE STRUT OF SINGLE PIECE BENT AT CENTER

SEE CYLINDER DETAIL

ATTACH WINDER HERE DETAILED

#11 WIRE SHAFT

WASHERS

NOSE OF LIGHT Balsa SHAPED AND WELL HOLLOWED

16 SQ. BAMBOO

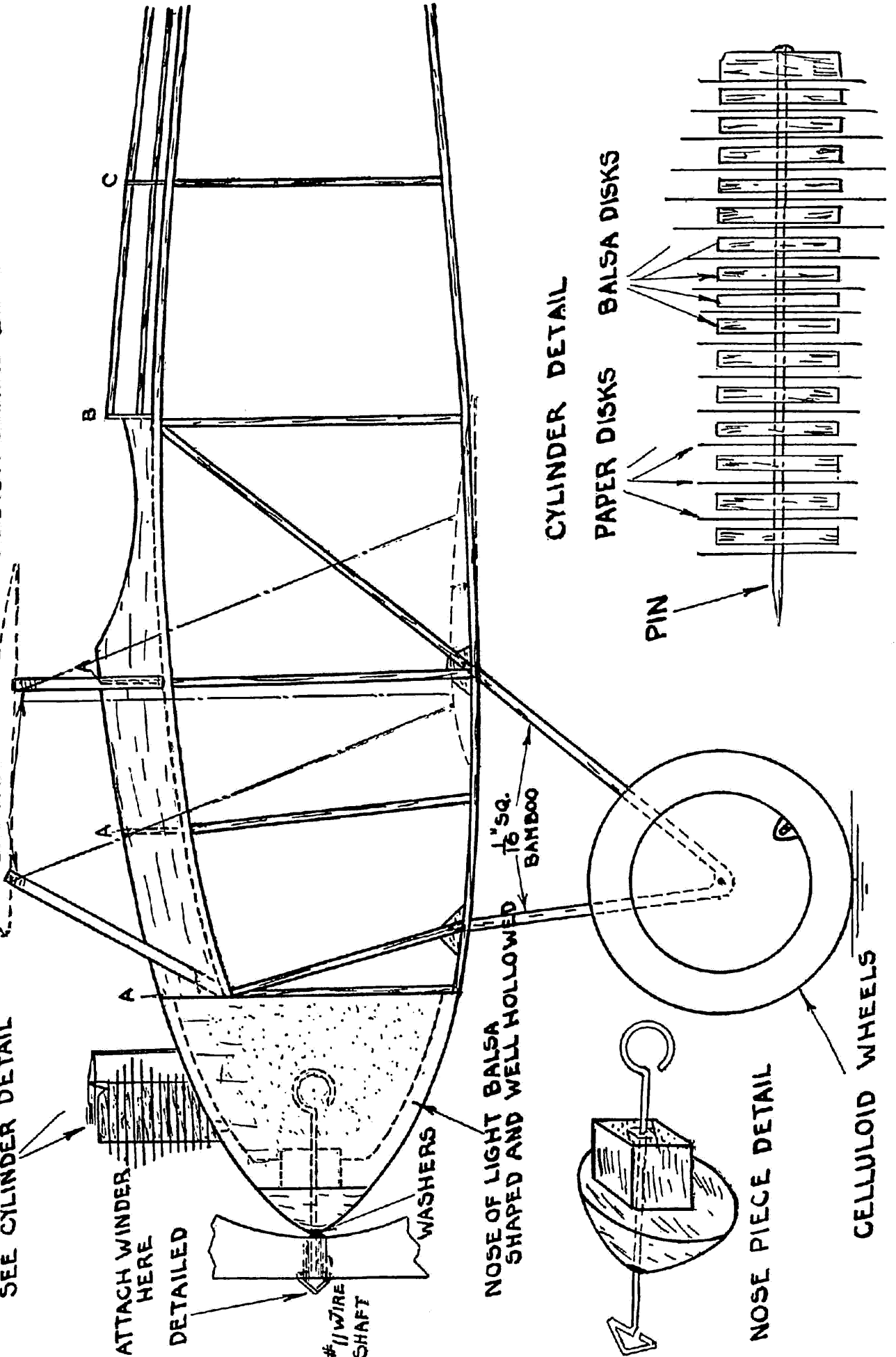
CYLINDER DETAIL

PAPER DISKS Balsa DISKS

PIN

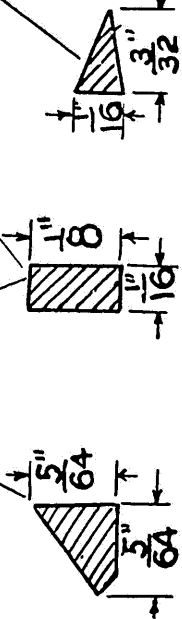
NOSE PIECE DETAIL

CELLULOIDE WHEELS

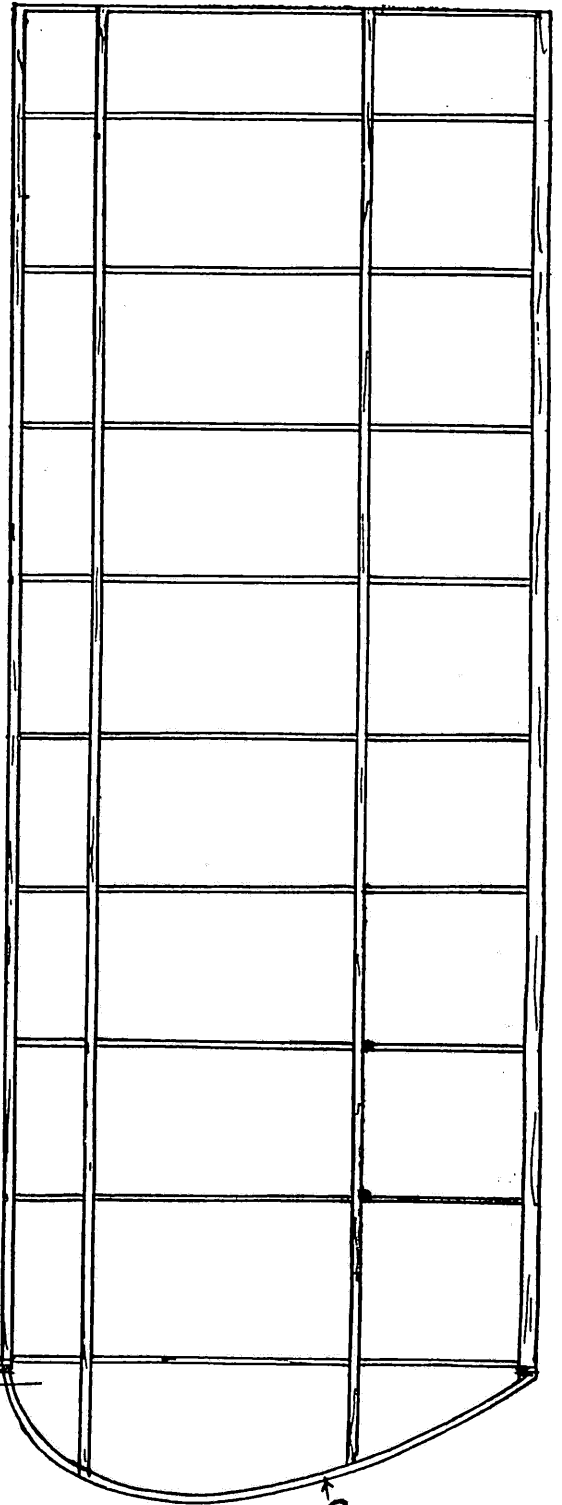
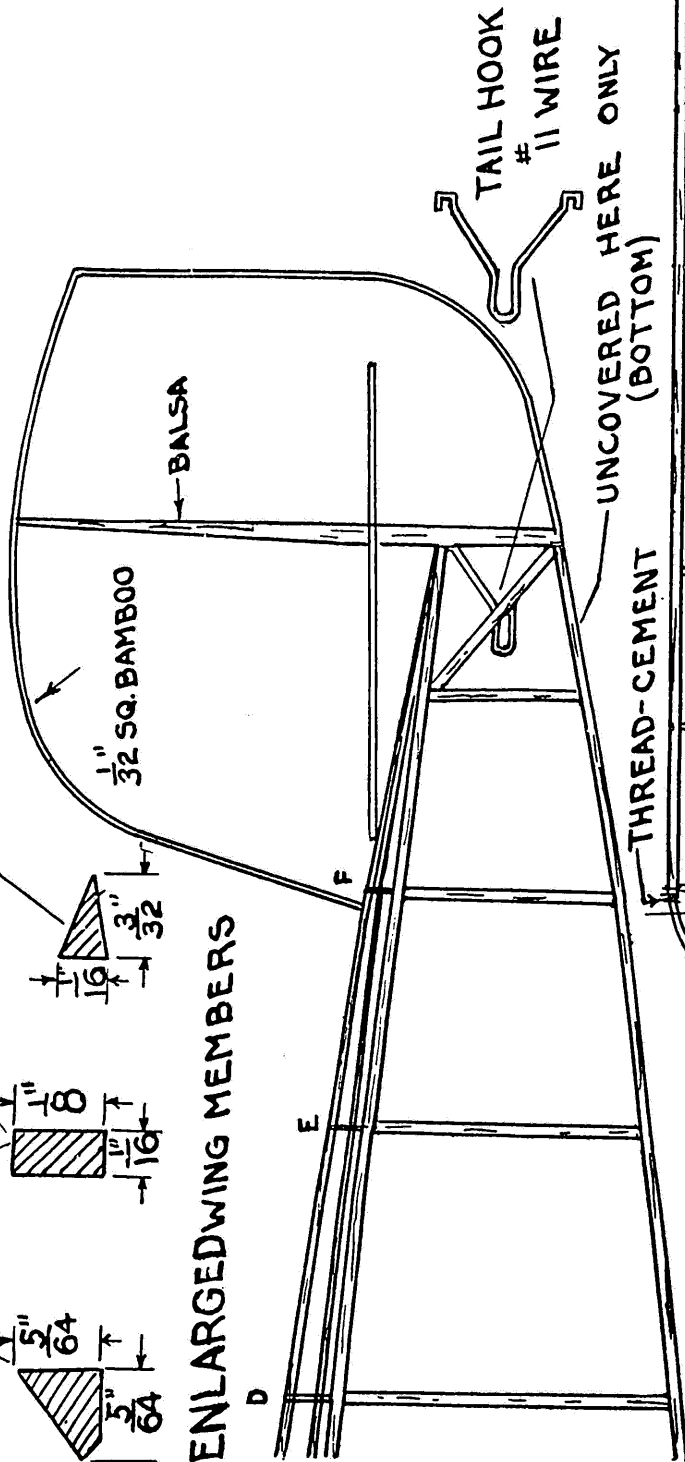


2

③
MAKE 42 RIBS FROM "MINUS" $\frac{1}{32}$ "
BALSA SHEET



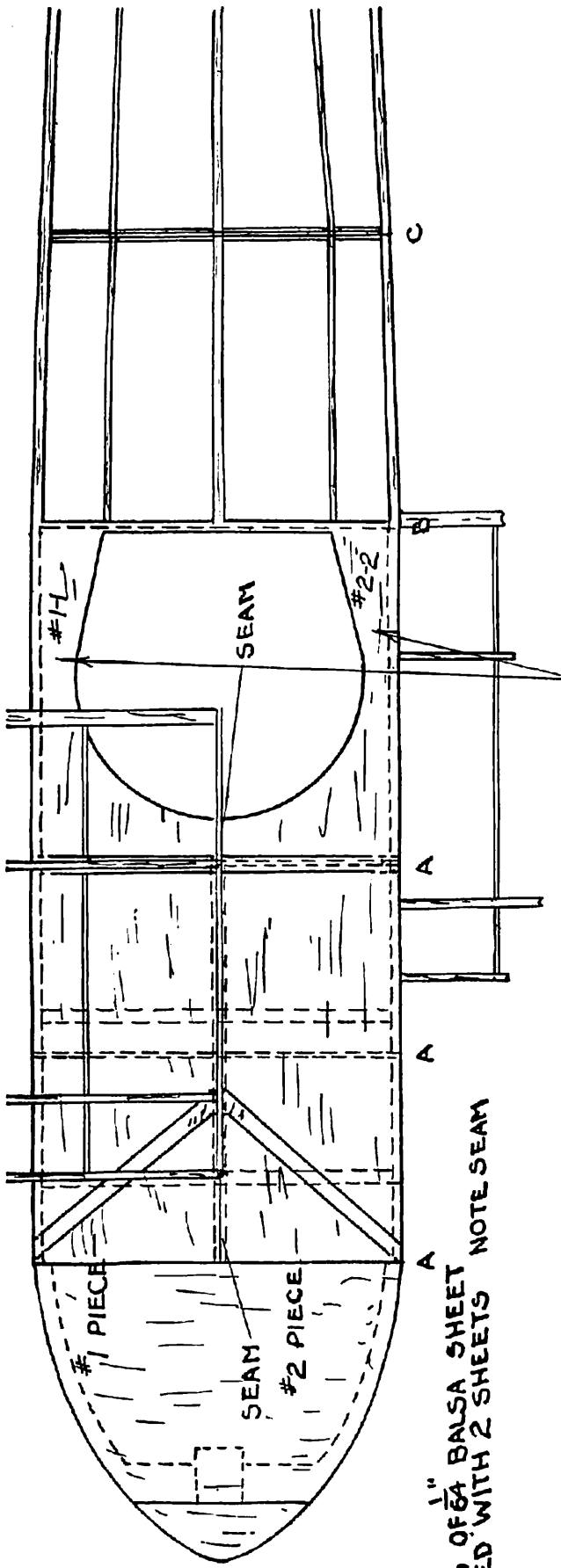
ENLARGED WING MEMBERS



BOTTOM HALF WING
LEFT SIDE - FOR
BOTTOM RIGHT SIDE
SIMPLY REVERSE
DRAWING OR POSITION
OF WING TIP AND END
RIB

$\frac{1}{32}$ " SQ. BAMBOO

SEE PLATE # 4 FOR
WING DETAILS

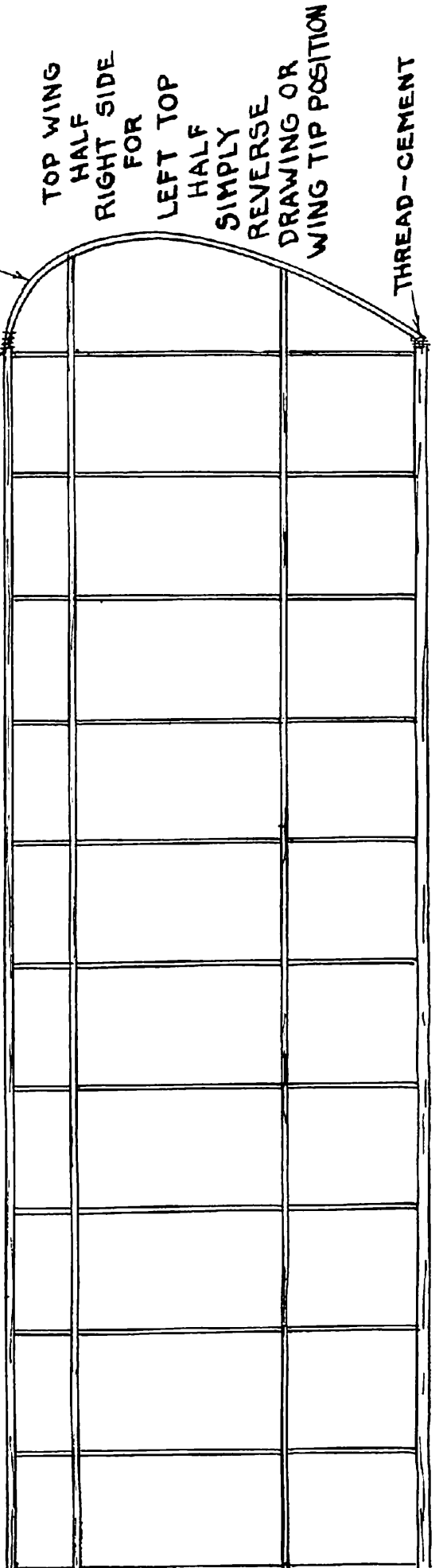


COWLING OF $\frac{1}{64}$ BALSA SHEET COVERED WITH 2 SHEETS NOTE SEAM

COCKPIT PORTION COVERED WITH 2 CUT OUT $\frac{1}{64}$ BALSA SHEETS

SEE PLATE # FOR WING DETAILS

WING TIP OF $\frac{1}{32}$ SQ. BAMBOO



TOP WING HALF RIGHT SIDE FOR LEFT TOP HALF SIMPLY REVERSE DRAWING OR WING TIP POSITION

THREAD-CEMENT

THREAD-CEMENT

