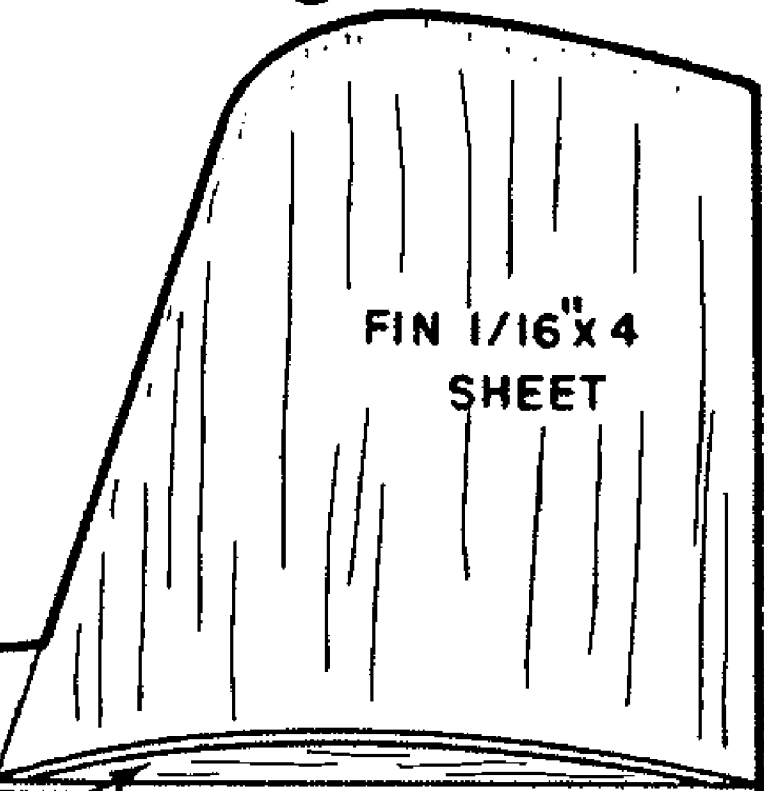
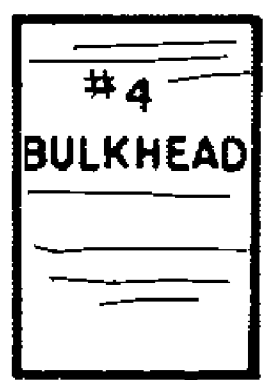
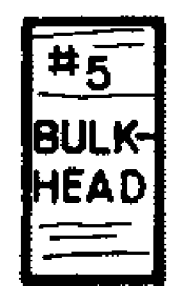
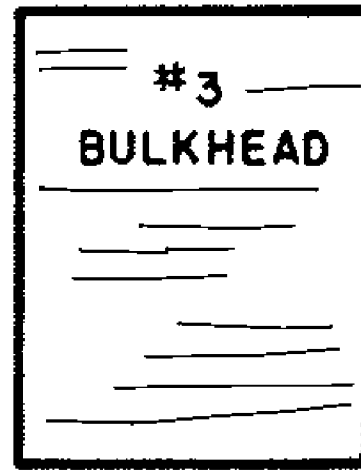
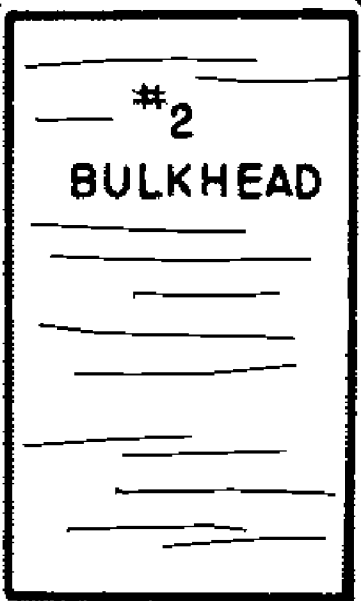
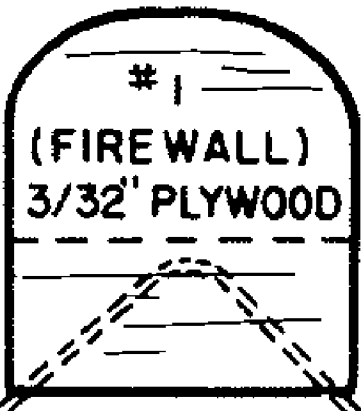


BOTTOM VIEW  
OF LEFT WING  
(REVERSE FOR RIGHT WING)

RIBS 1/8" SHEET STOCK

MAKE WING FROM 3/32" X 6" X 30"  
SHEET STOCK (OR FROM TWO  
PIECES 3/32" X 3" X 30" BUTT JOINTED  
AT ONE EDGE); CUT APART BETWEEN  
RIBS AT THE CENTER LINE. USE  
TRAILING EDGE STOCK TO  
ESTABLISH DIHEDRAL.

CUT AWAY TRAILING EDGE AFTER GLUEING  
RIBS TO SHEET STOCK



WING RIB TEMPLATE

CENTER SECTION  
(SEE TEXT)

CENTER SECTION BLOCK

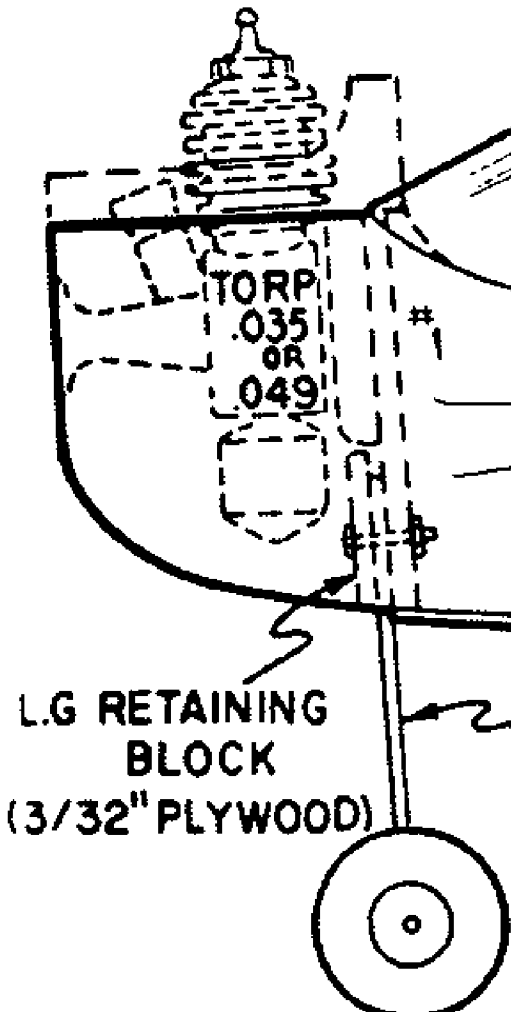
DOWEL

DORSAL FIN

DOWEL

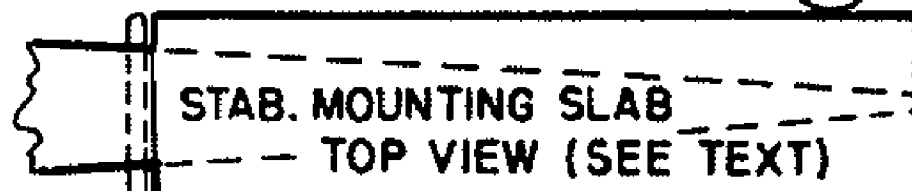
STAB. RIB TEMPLATE

FUSELAGE SIDE 1/16" SHEET



L.G. RETAINING  
BLOCK  
(3/32" PLYWOOD)

LANDING GEAR 1/16" WIRE



STAB. MOUNTING SLAB  
TOP VIEW (SEE TEXT)

STABILIZER 1/16" X 4" X 13"

RIBS 1/8" SHEET STOCK

FULL SIZE PLANS