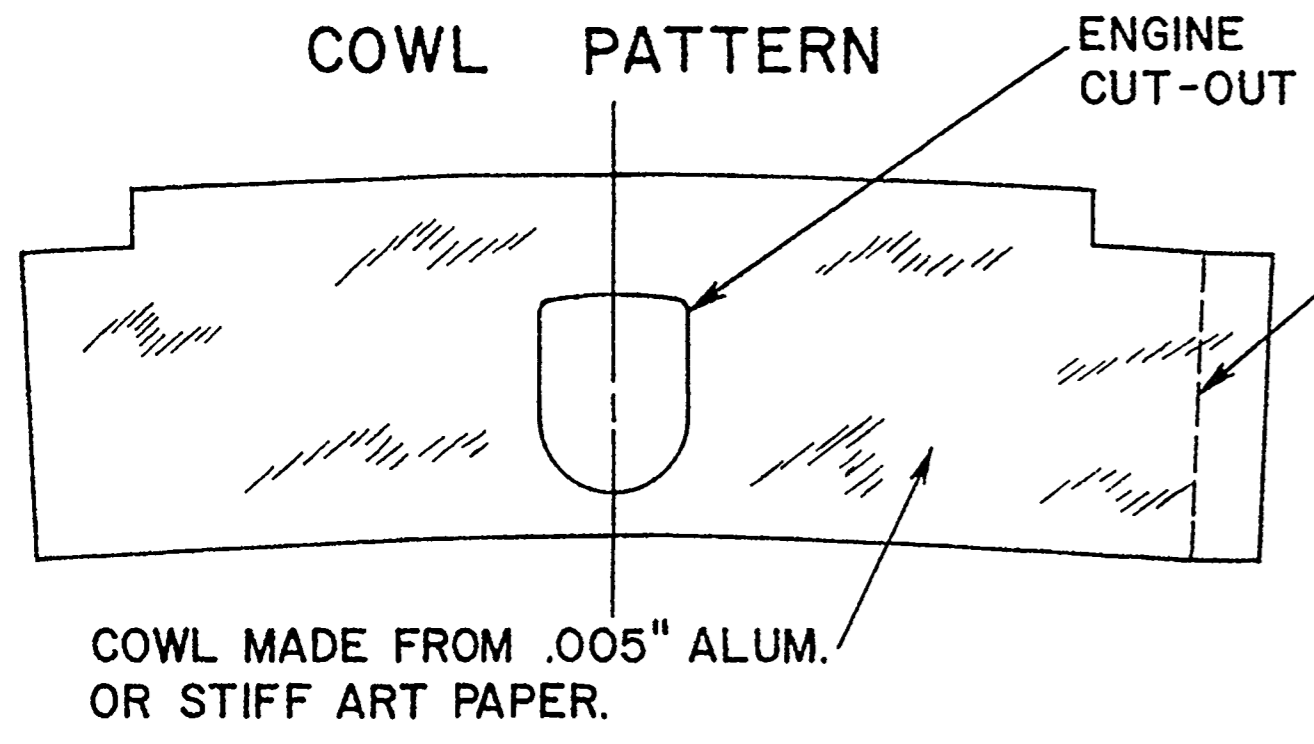
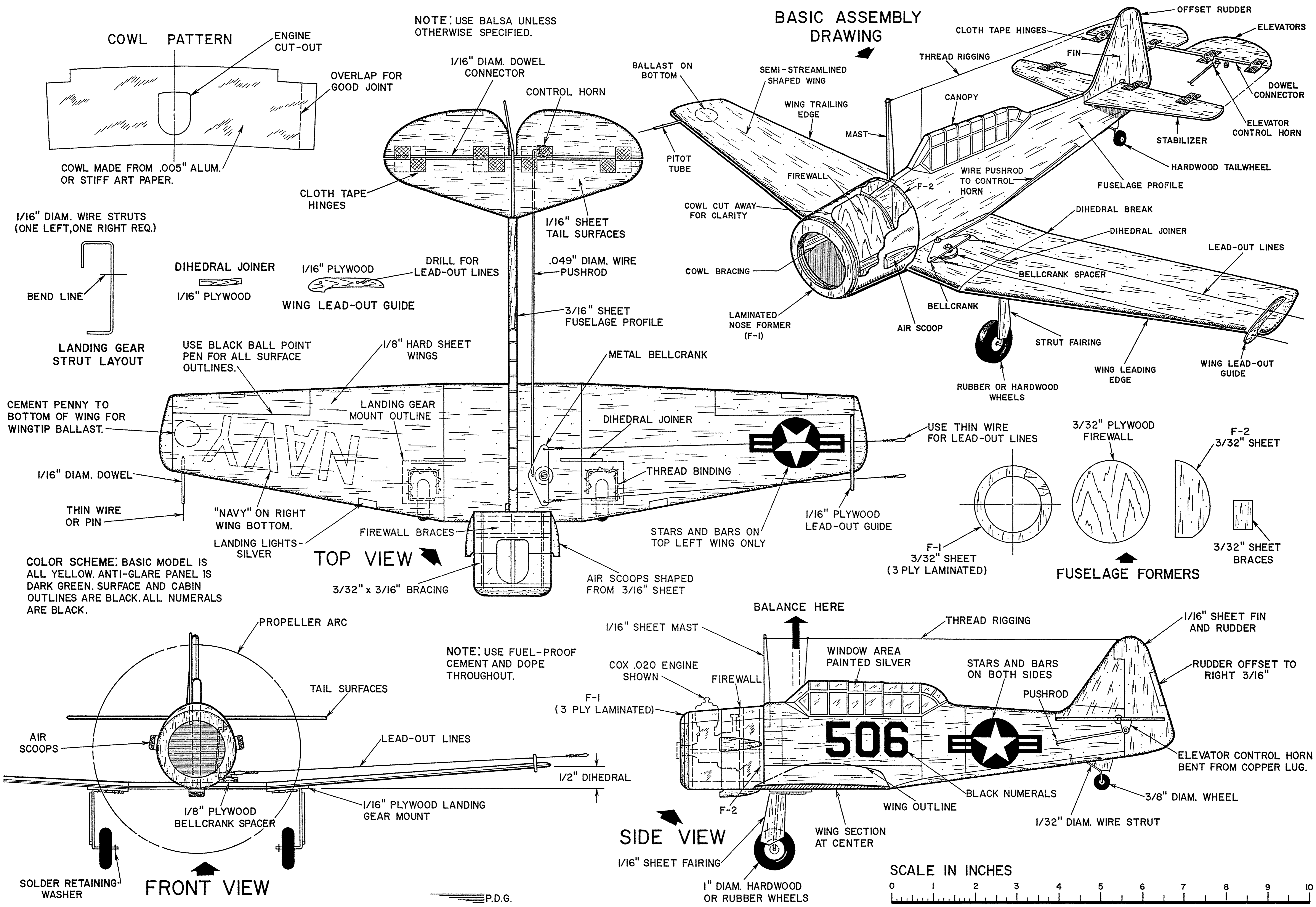
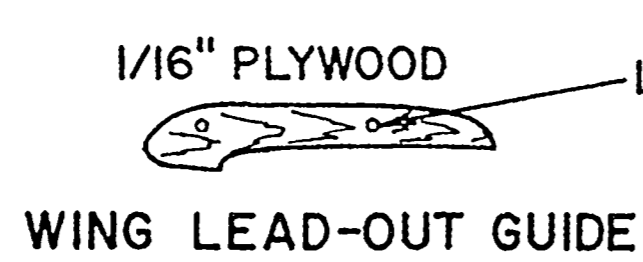
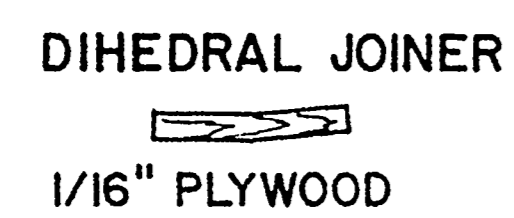
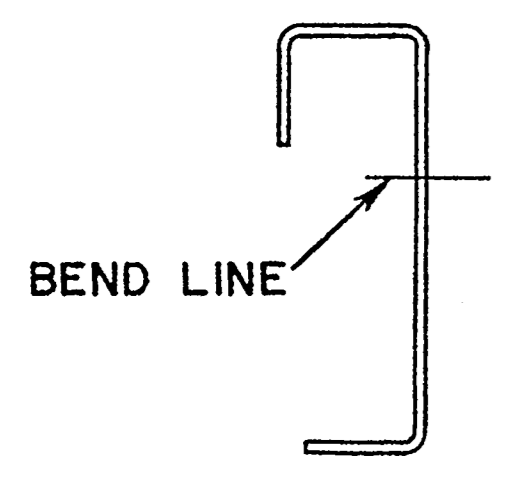


NOTE: USE Balsa UNLESS OTHERWISE SPECIFIED.

BASIC ASSEMBLY DRAWING



1/16" DIAM. WIRE STRUTS (ONE LEFT, ONE RIGHT REQ.)



USE BLACK BALL POINT PEN FOR ALL SURFACE OUTLINES.

CEMENT PENNY TO BOTTOM OF WING FOR WINGTIP BALLAST.

1/16" DIAM. DOWEL

THIN WIRE OR PIN

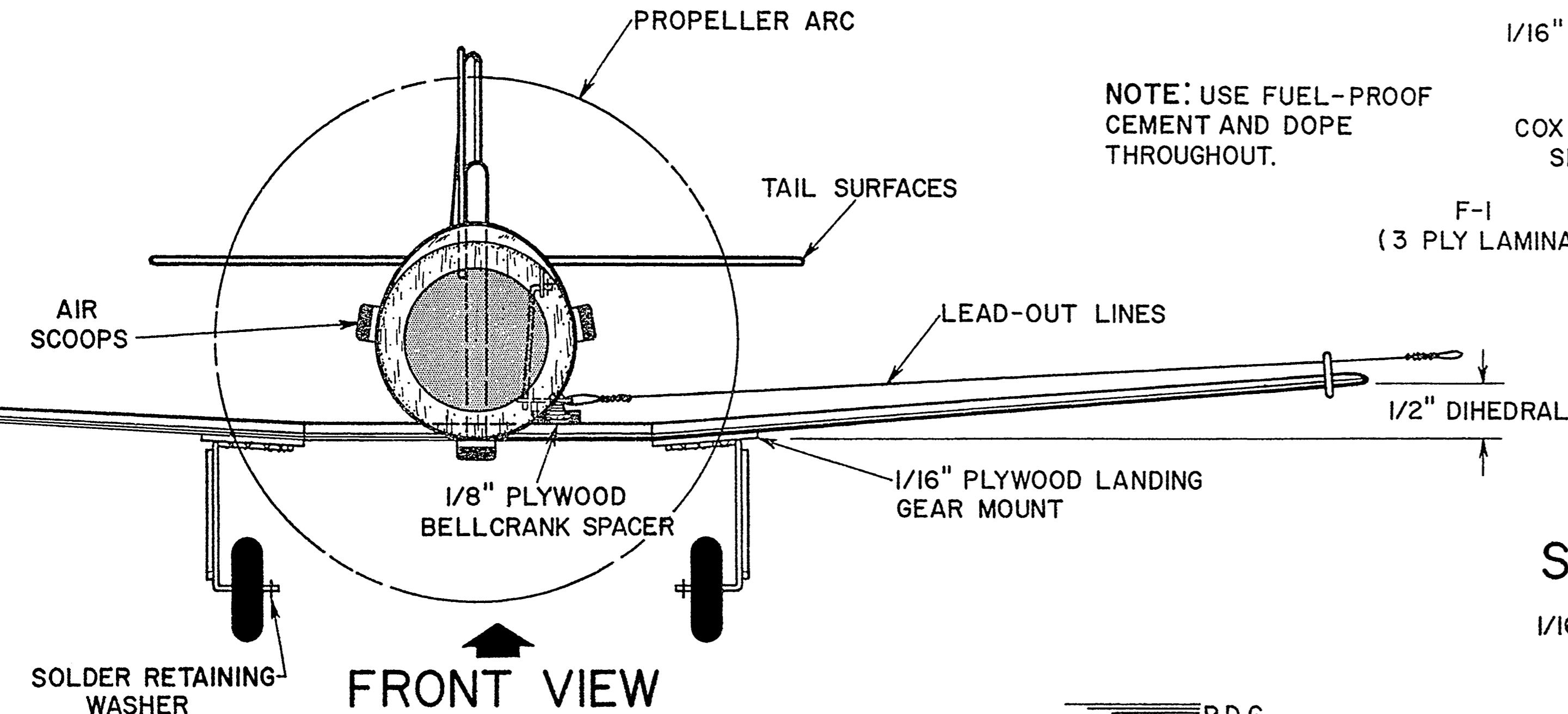
"NAVY" ON RIGHT WING BOTTOM.

LANDING LIGHTS - SILVER

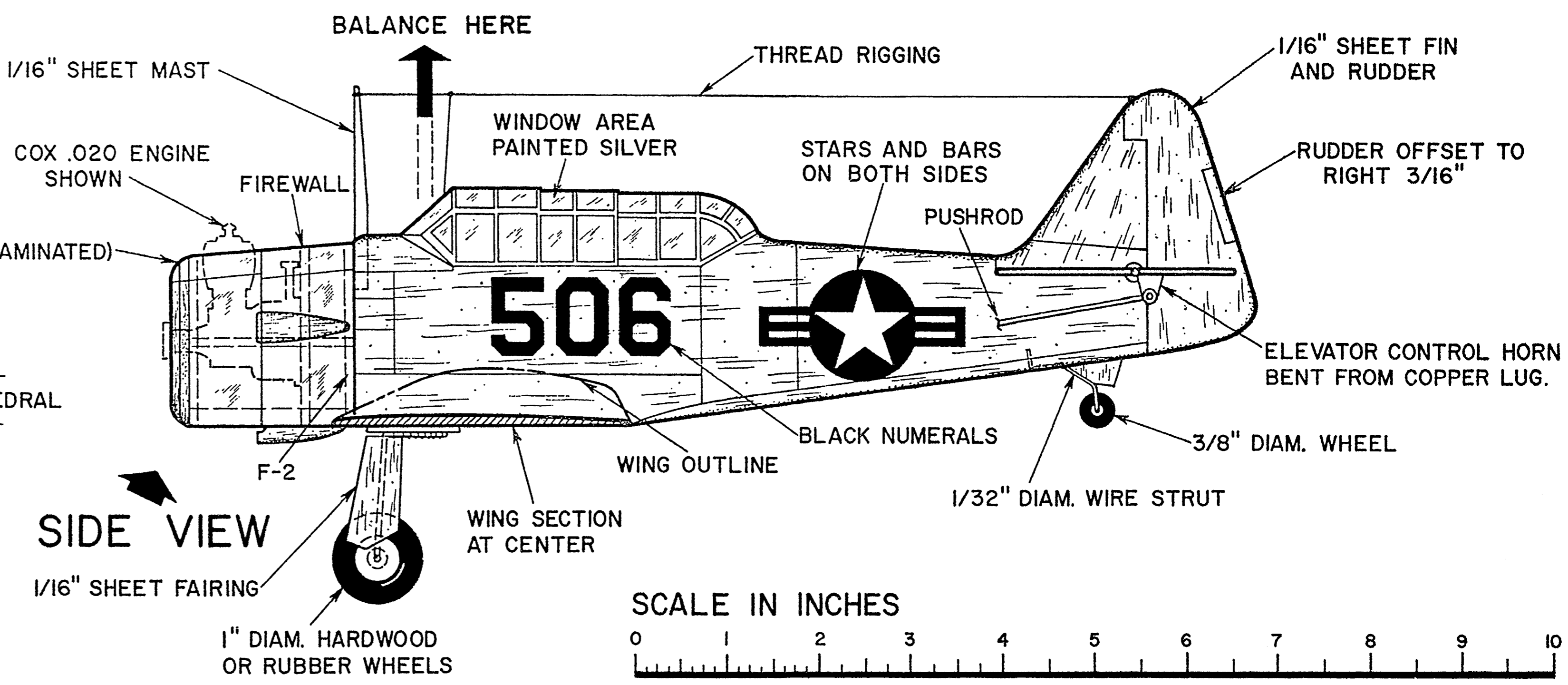
COLOR SCHEME: BASIC MODEL IS ALL YELLOW. ANTI-GLARE PANEL IS DARK GREEN. SURFACE AND CABIN OUTLINES ARE BLACK. ALL NUMERALS ARE BLACK.

TOP VIEW

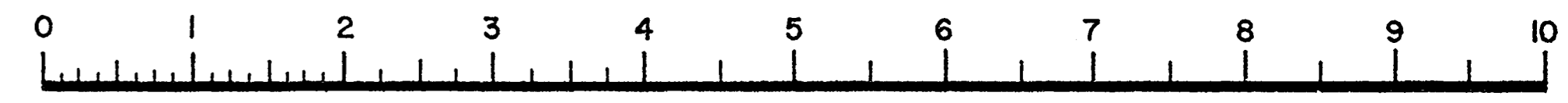
3/32" x 3/16" BRACING



NOTE: USE FUEL-PROOF CEMENT AND DOPE THROUGHOUT.



SCALE IN INCHES



P.D.G.