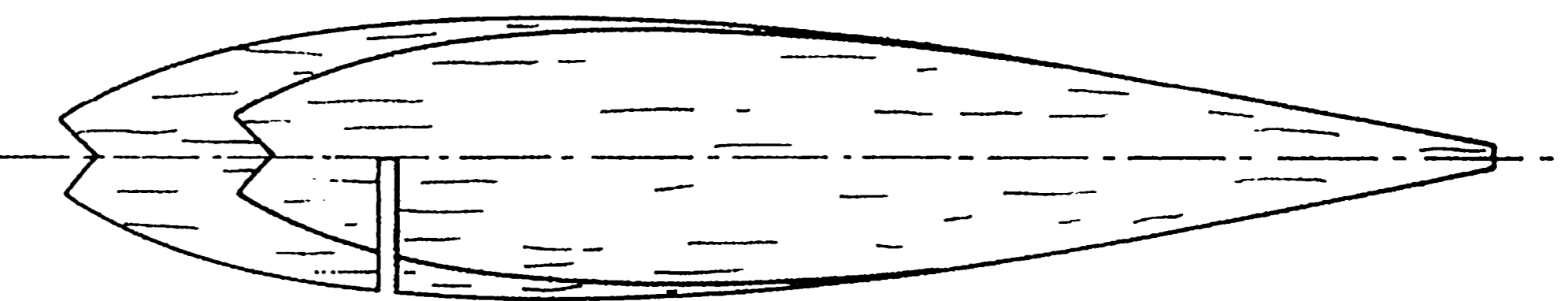


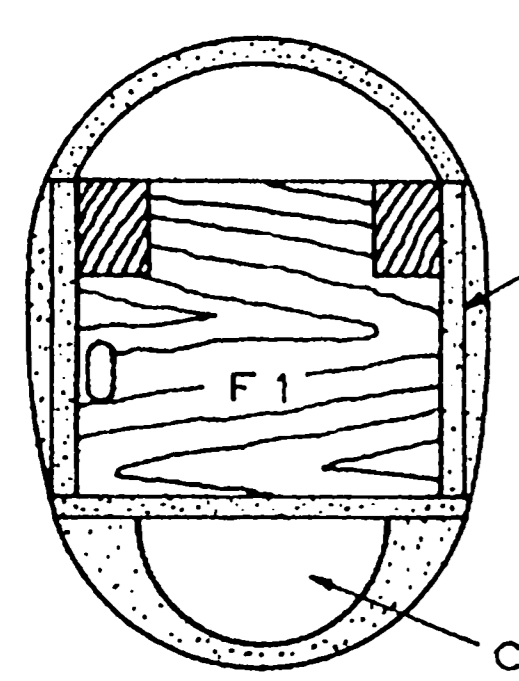
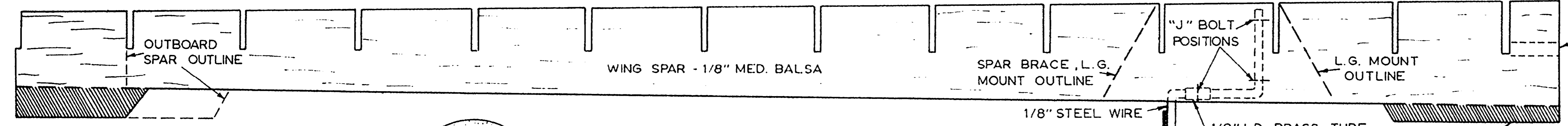
NOTE - OUTBOARD WING IS 2" SHORTER THAN INBOARD WING. ADD 1 OUNCE OF LEAD TO OUTBOARD TIP TO BALANCE WING. WING TIPS ARE CARVED FROM SOFT BLOCKS AND HOLLOWED TO 1/8" WALL.

ALL TAIL SURFACES ON PROTOTYPE COVERED WITH 1/32" SHEET. SILK MAY ALSO BE USED IF PREFERRED.

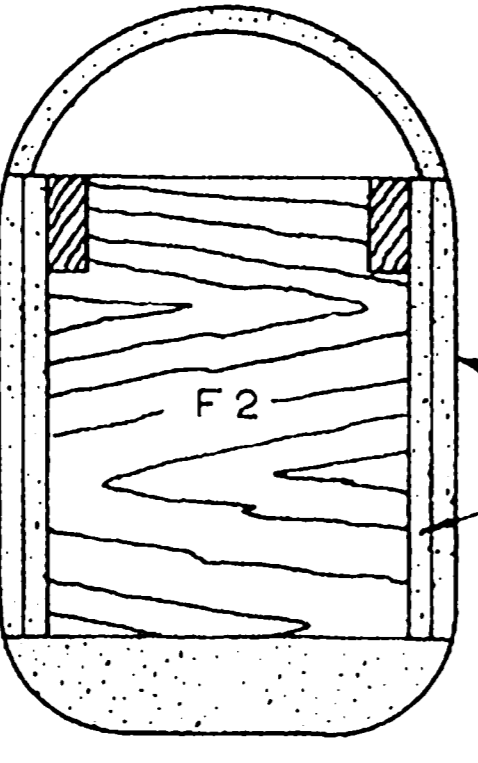
COLOR SCHEME : SILVER WILL MAGNIFY SURFACE BLEMISHES AND IS NOT RECOMMENDED. ORIGINAL WAS DOPED WHITE. WING AND TAIL TIPS AND COWL AND AIR SCOOP MOUTHS WERE DOPED RED. GREEN ANTI-GLARE PANEL. RED STARS (1/8" AND 1/4" DECALS) AT RANDOM ON WHEEL COVERS AND RUDDER TIP. AIR FORCE STARS AND BARS - STANDARD DECALS. DETAIL DECALS ("NO STEP", ETC.) BY WONDERCAL.



SANDWICH 14 RIB BLANKS BETWEEN RIB PATTERNS AND SAND TO SHAPE. REPEAT PROCEDURE USING 13 BLANKS FOR OUTBOARD WING RIBS.

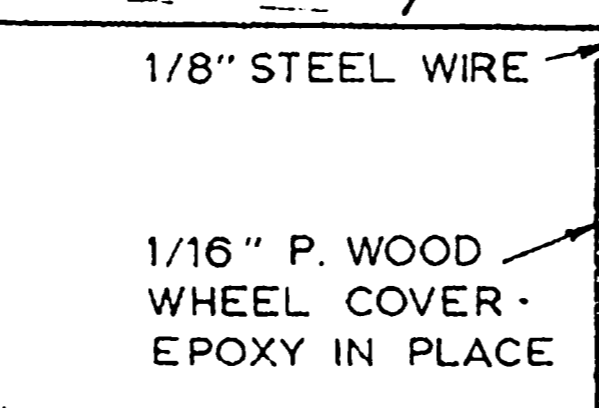


LAYER OF SILK JOIN TO FUSELAGE DOUBLERS AND SIDES WITH FIBER-GLASS RESIN. ALSO USE RESIN TO ATTACH TOP AND BOTTOM BLOCKS TO FUSELAGE SIDES.

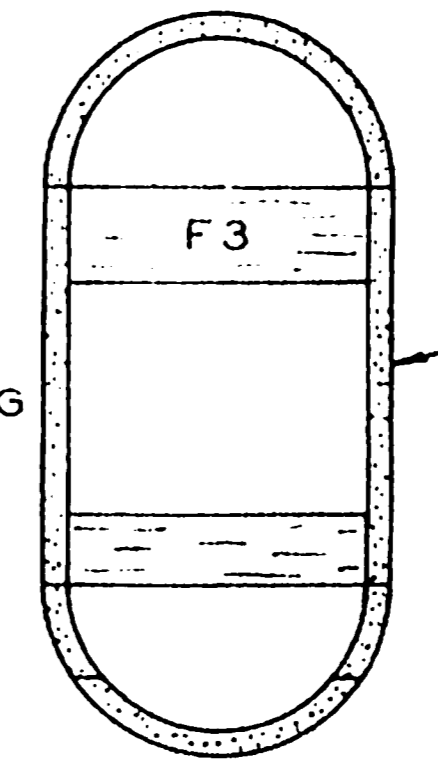


THE OPTIMUM WEIGHT OF THIS MODEL, FOR USE AT AN ALTITUDE OF 1500 FEET ABOVE SEA LEVEL IS 43-45 OUNCES THE OPTIMUM WEIGHT DECREASES AS ALTITUDE INCREASES.

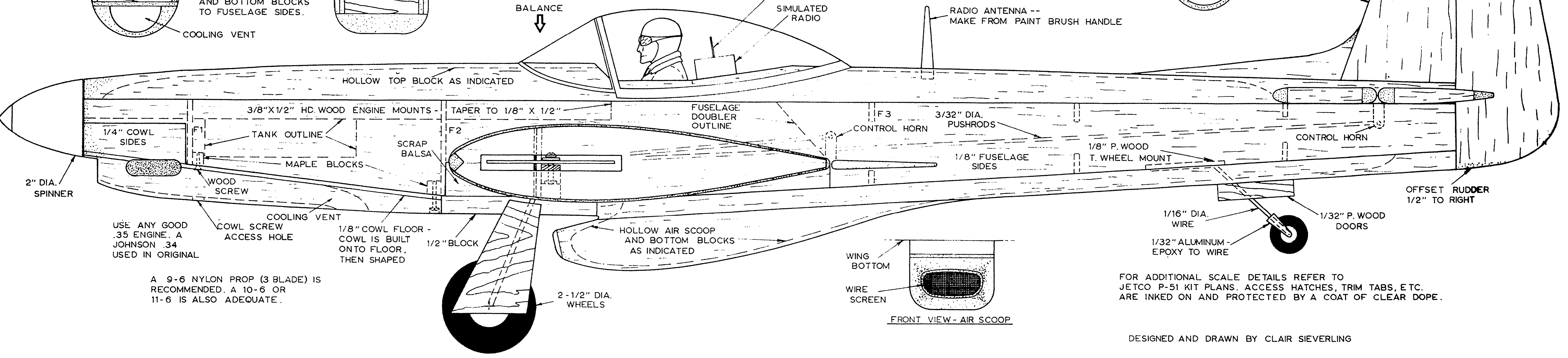
BALANCE



SHADED AREAS - PIN TO BENCH DURING WING CONSTRUCTION AND TRIM OFF AFTER REMOVING WING FROM BENCH

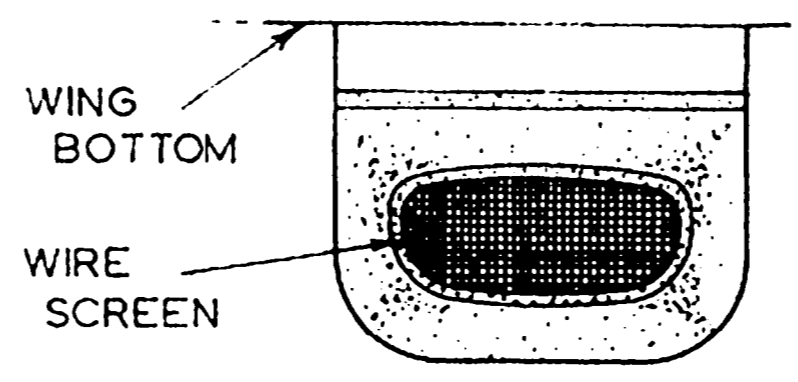


1/4" SOFT SHEET



USE ANY GOOD .35 ENGINE. A JOHNSON .34 USED IN ORIGINAL

A 9-6 NYLON PROP (3 BLADE) IS RECOMMENDED. A 10-6 OR 11-6 IS ALSO ADEQUATE.



FRONT VIEW - AIR SCOOP

FOR ADDITIONAL SCALE DETAILS REFER TO JETCO P-51 KIT PLANS. ACCESS HATCHES, TRIM TABS, ETC. ARE INKED ON AND PROTECTED BY A COAT OF CLEAR DOPE.

DESIGNED AND DRAWN BY CLAIR SIEVERLING