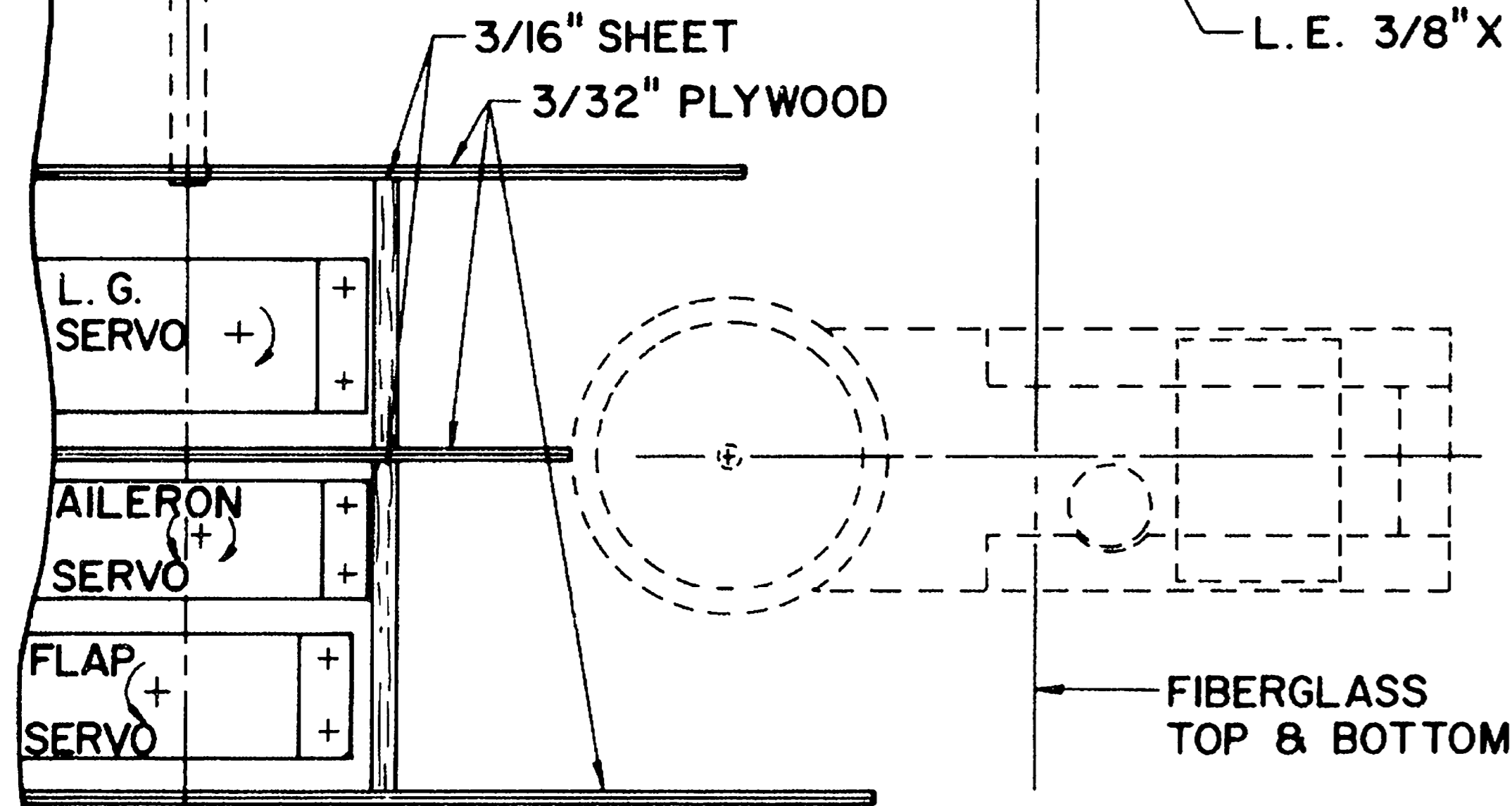


WING TIP SECTION

WING ROOT SECTION

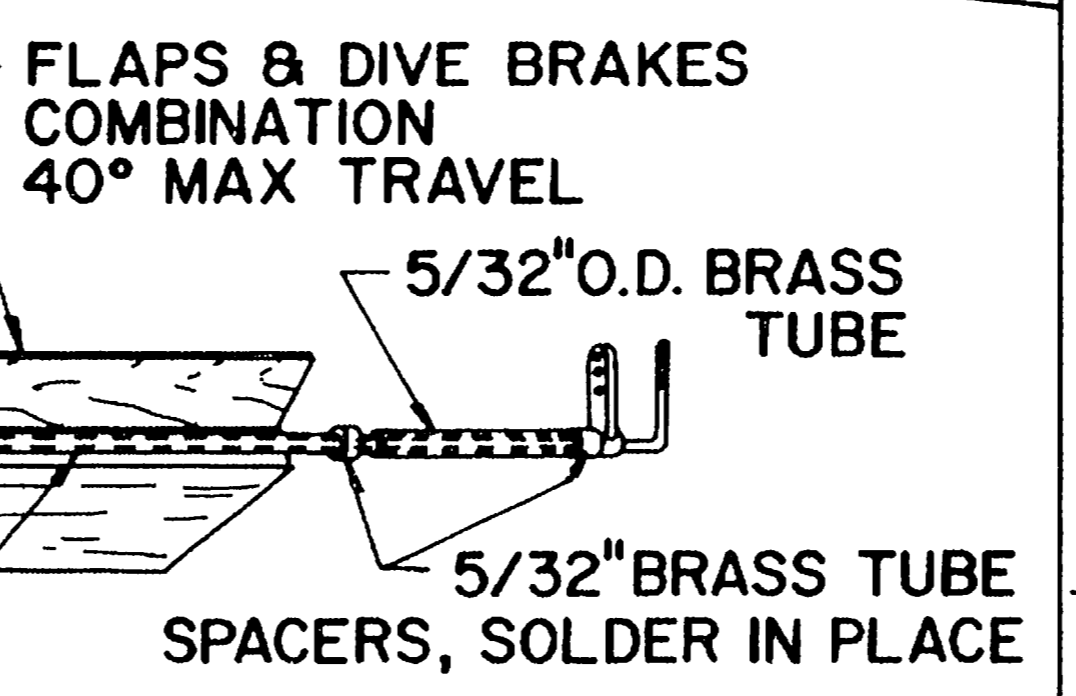
STAB ROOT SECTION

STAB TIP SECTION



HARDWOOD L. G. RAILS

AILERON



DETAIL OF FLAP AILERON CONTROL

SECTION AT COMBINATION FLAPS-DIVE BRAKES

3/32\"/>

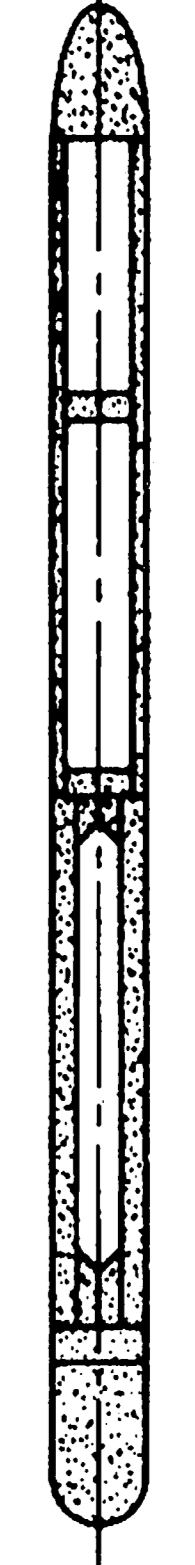
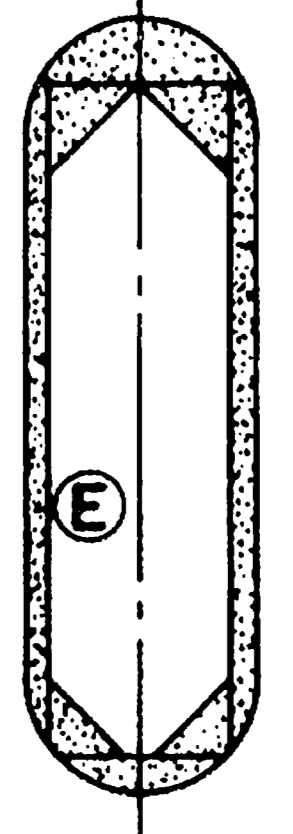
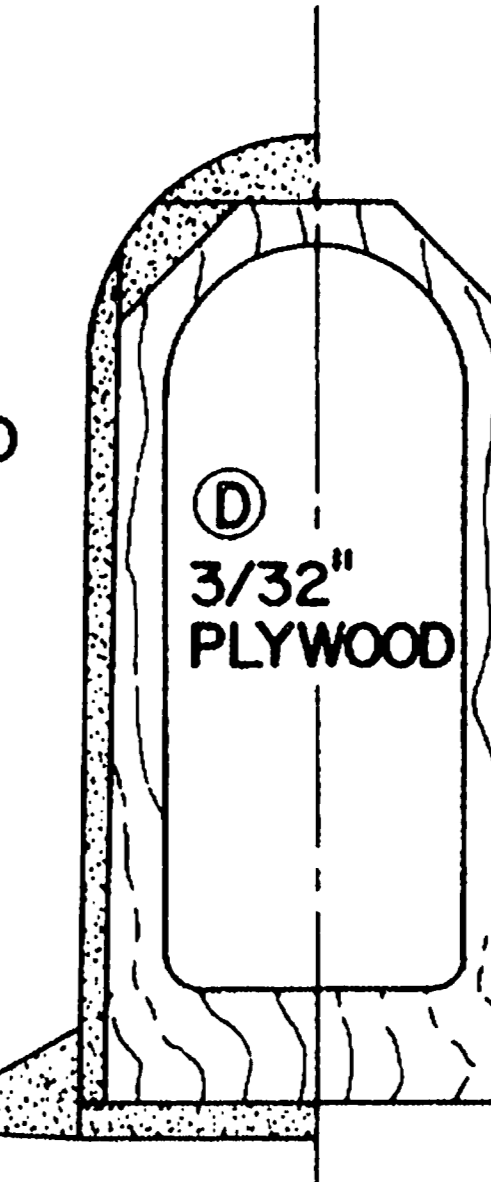
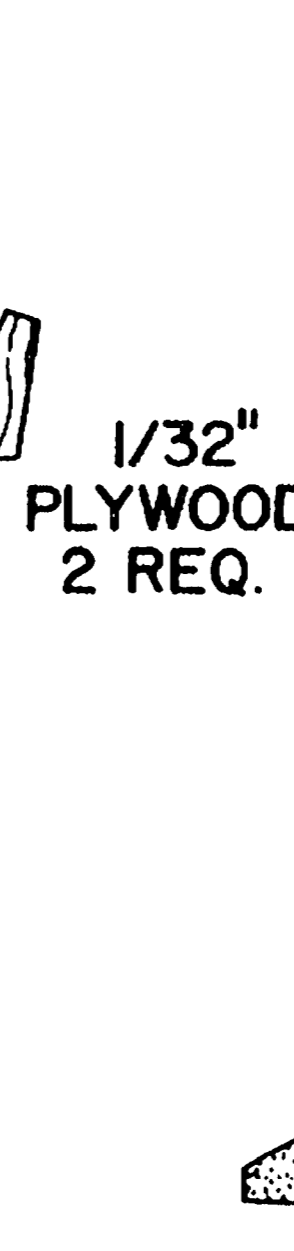
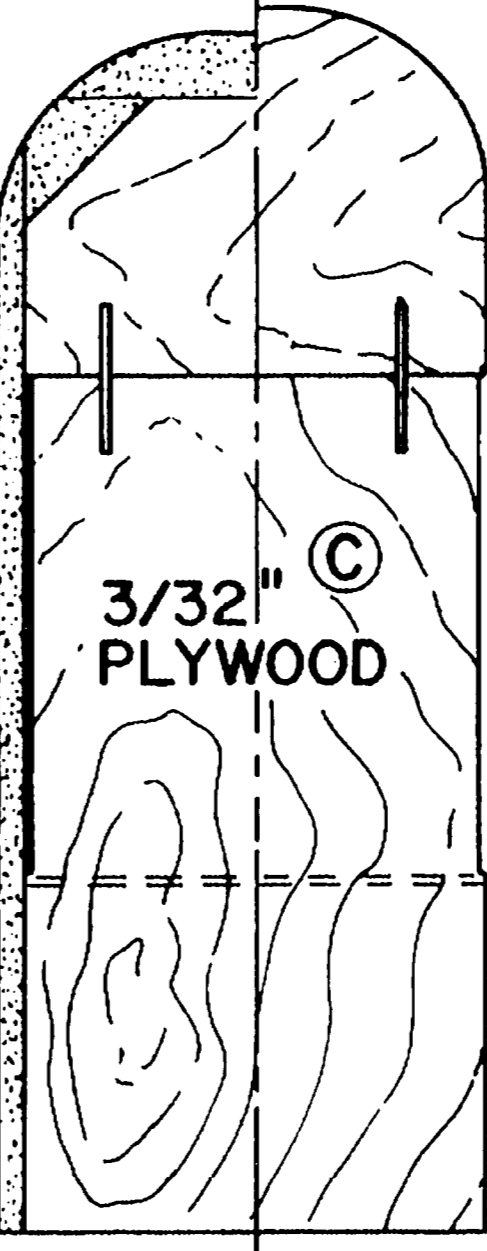
1/16\"/>

T.E. 3/8\"/>

SOFT BLOCK

3/8\"/>

SOFT BLOCK



3 3/8\"/>

STAB ANHEDRAL DETAIL

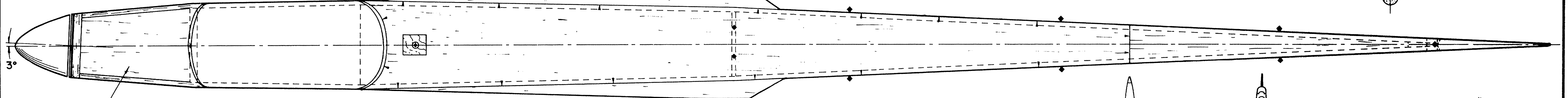
CLEARANCE FOR #10 SCREWS

3/8\"/>

WING DIHEDRAL DETAIL

2 3/16\"/>

1/16\"/>



SOFT BLOCK TOP & BOTTOM

- ▲ FUSELAGE SIDE 1/8\"/>
- ▼ FUSELAGE TOP 5/16\"/>
- ◆ FUSELAGE BOTTOM 3/16\"/>
- △ FUSELAGE DOUBLER 1/32\"/>

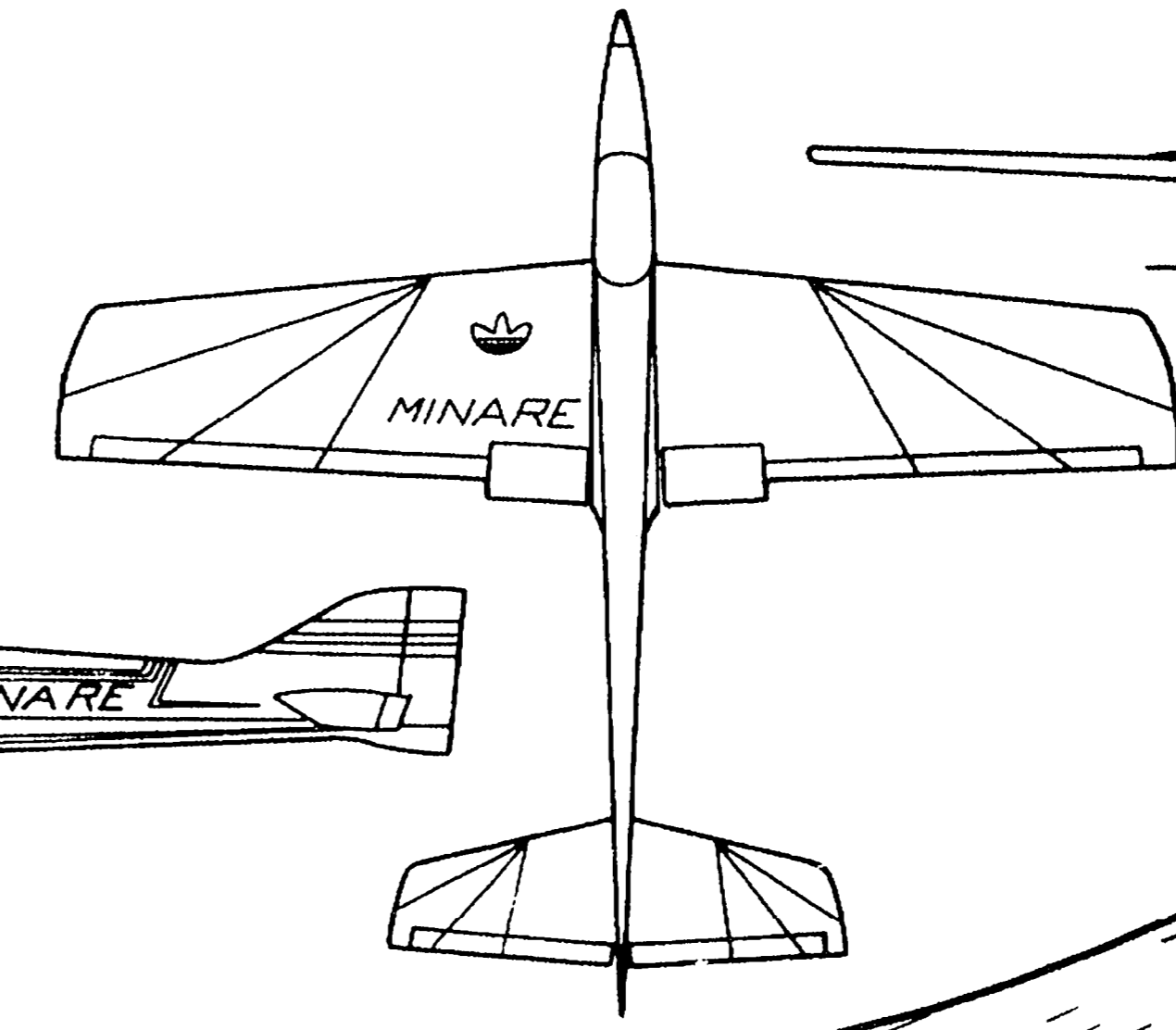
1/32\"/>

TRIANGLE STOCK



3/32\"/>

HARDWOOD



1/8\"/>

SOFT BLOCK

1/16\"/>

3/8\"/>

MINARE

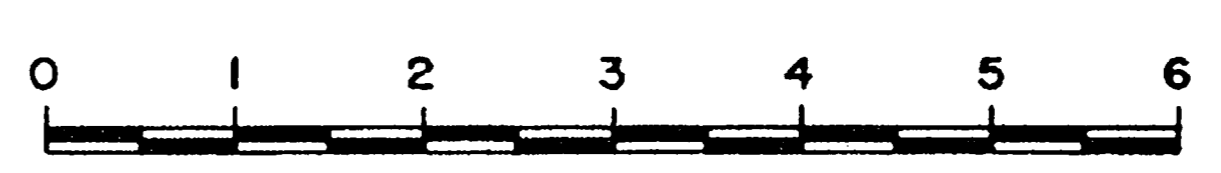
HARD BLOCK

5/16\"/>

WING SPAN: 56"
 FUSELAGE LENGTH: 49 1/2"
 WEIGHT: 5.5-6 LB
 ENGINE: WEBRA SPEED 40-61 RC

DESIGNED & DRAWN BY HANS & HANNO PRETTNER

TRACED FOR M.A.N. BY RAY BORDEN



Scanning Scaling and Digitization by Hlsat

MATERIAL Balsa or SPECIFIED DIMENSIONS ARE IN INCHES					
IN.	MM	IN.	MM	IN.	MM
1/64	.5	1/8	3	1/2	13
1/32	1.0	3/16	5	5/8	16
1/16	1.5	1/4	6.5	3/4	19
3/32	2.5	3/8	9.5		25

