

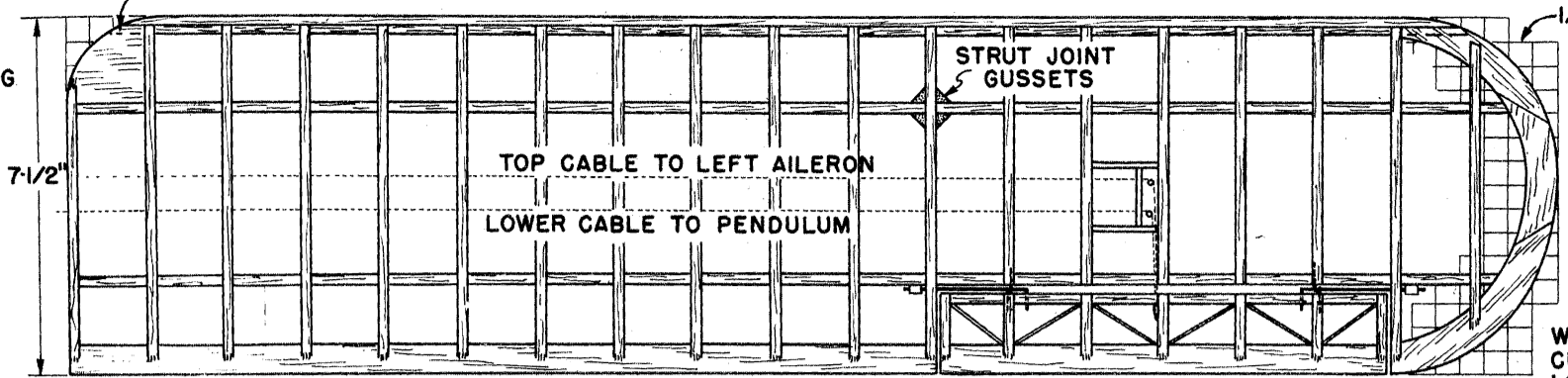
CARVED FROM Balsa BLOCK

ALL WING RIBS SPACED 1-5/8"

RIB CAPSTRIPS ARE 1/16 X 3/16"

LEADING EDGE IS 1/4" SQUARE

SPAN OF SINGLE WING PANEL IS 31-1/4"



1/2" SQUARES

WING TIP IS CUT FROM 1/4" SHEET

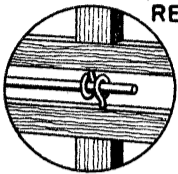
FRONT WING SPAR IS 3/16 X 5/8" REAR SPAR IS 3/16 X 5/16"

WING TRAILING EDGE IS 3/16 X 5/8"

CUT OUT 28 RIBS TO FULL LENGTH AS ILLUSTRATED

CUT OUT THIS PORTION OF RIB FOR PASSAGE OF CONTROL CABLES

CUT OUT 10 RIBS TO THIS LENGTH



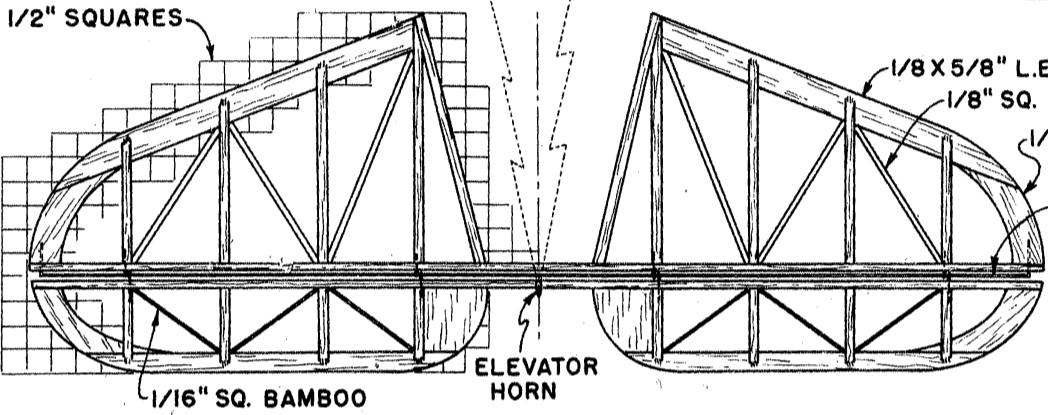
HINGE DETAIL

TOP CABLE CONNECTS UPPER ELEVATOR HORN TO AFT END OF PENDULUM

LOWER CABLE CONNECTS ELEVATOR HORN TO FIREWALL PULLEY, THEN TO FRONT OF PENDULUM.

WING RIB OUTLINE IS GIVEN FULL SIZE ALL OTHER LAYOUTS ARE 1/4 ACTUAL SIZE

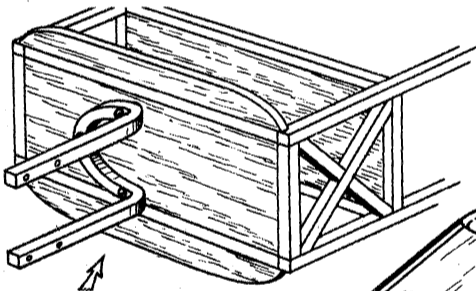
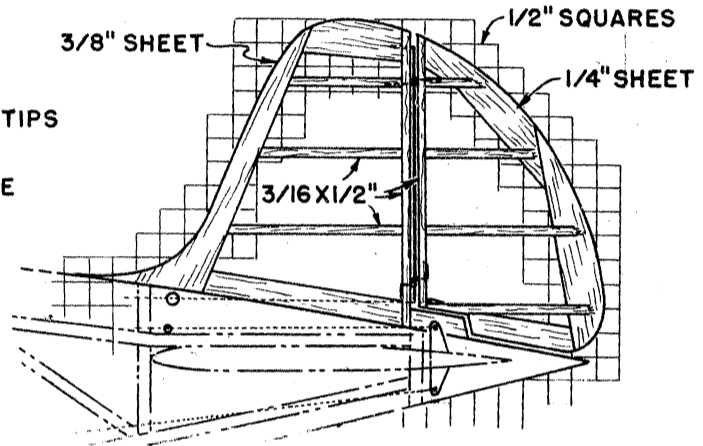
1/2" SQUARES



STABILIZER SPARS ARE 1/8 X 1/2"

TRAILING EDGE IS 1/16 X 3/8"

3/8" SHEET

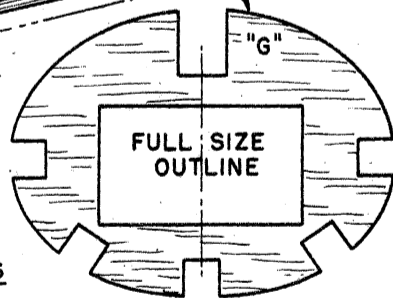
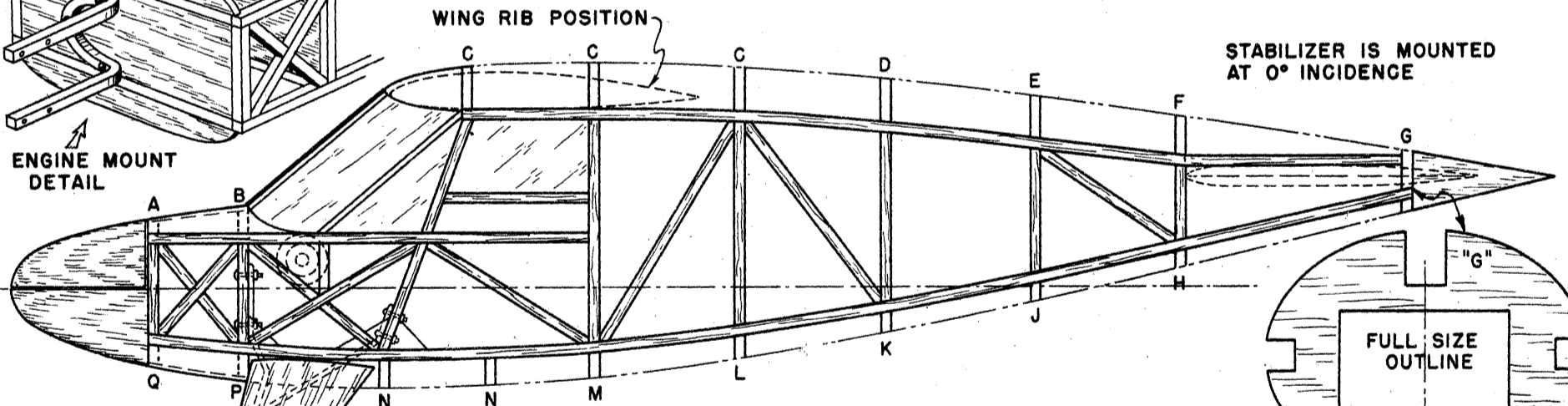


ENGINE MOUNT DETAIL



(FULL SIZE OUTLINE)

STABILIZER IS MOUNTED AT 0° INCIDENCE



FULL SIZE OUTLINE

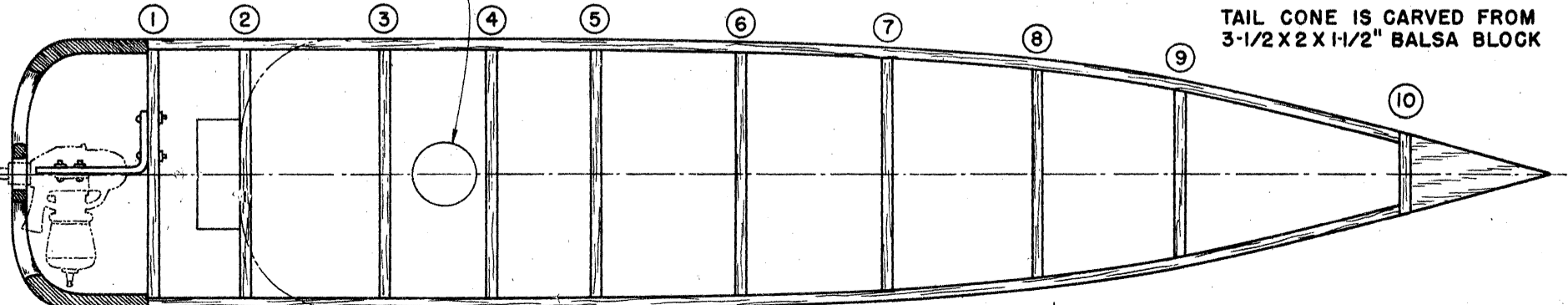
DISTANCE FROM C to OUTSIDE EDGES OF LONGERONS

	1	2	3	4	5	6	7	8	9	10
UPPER	1-3/8	1-3/8	—	4-1/2	4-1/2	4-3/8	4-1/8	3-3/4	3-1/4	3-1/4
LOWER	1-3/8	1-5/8	1-3/4	1-3/4	1-5/8	1-1/4	5/8	-1/8	-7/8	2-1/8
SIDES	3-3/8	← CONSTANT →		3-3/8	35/16	3-1/8	2-7/8	2-3/8	1"	

FUSELAGE SIDE AND TOP VIEWS ARE 1/4 ACTUAL SIZE.

PENDULUM MOUNTING POSITION

TAIL CONE IS CARVED FROM 3-1/2 X 2 X 1-1/2" Balsa BLOCK



"P" FULL SIZE OUTLINE