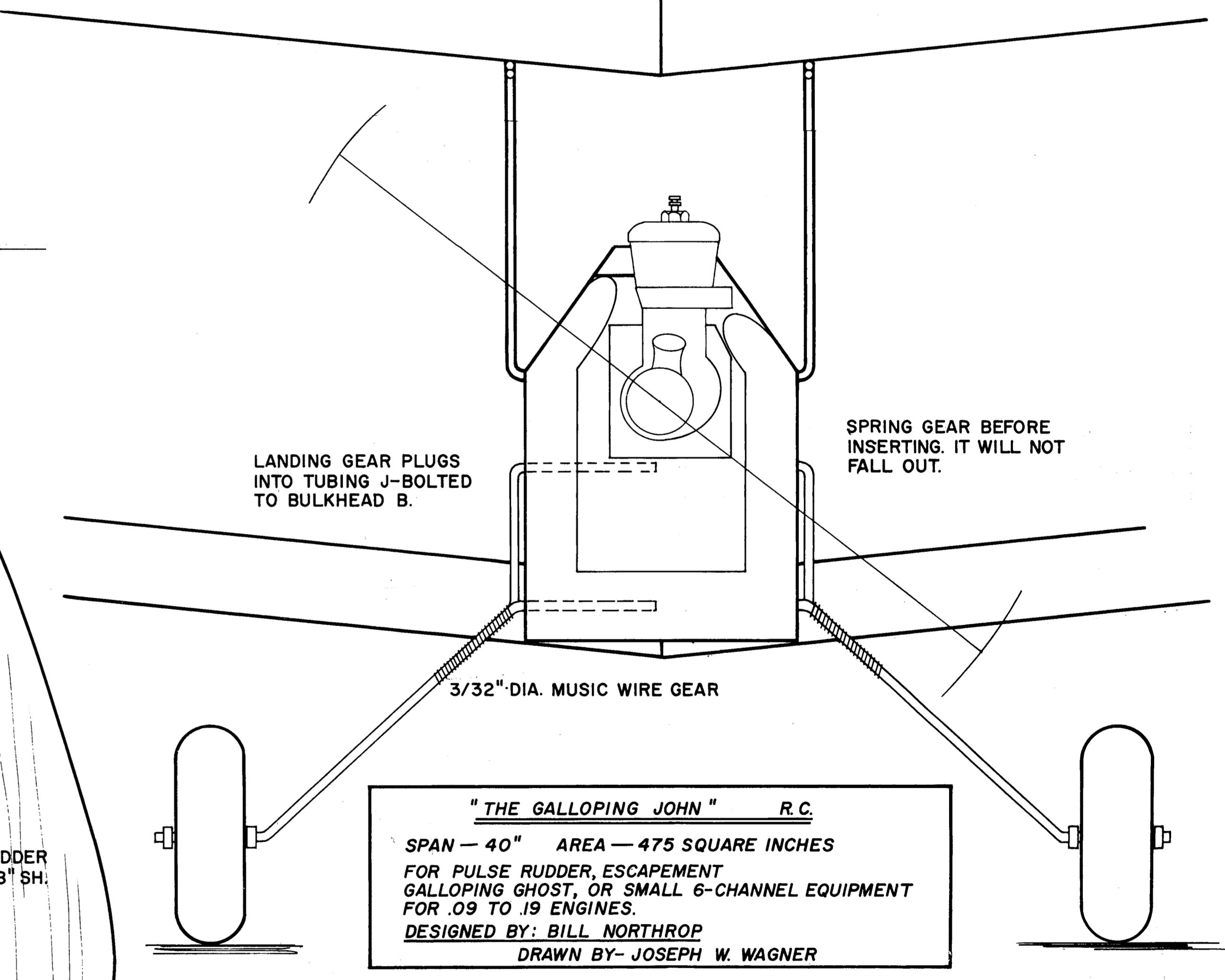
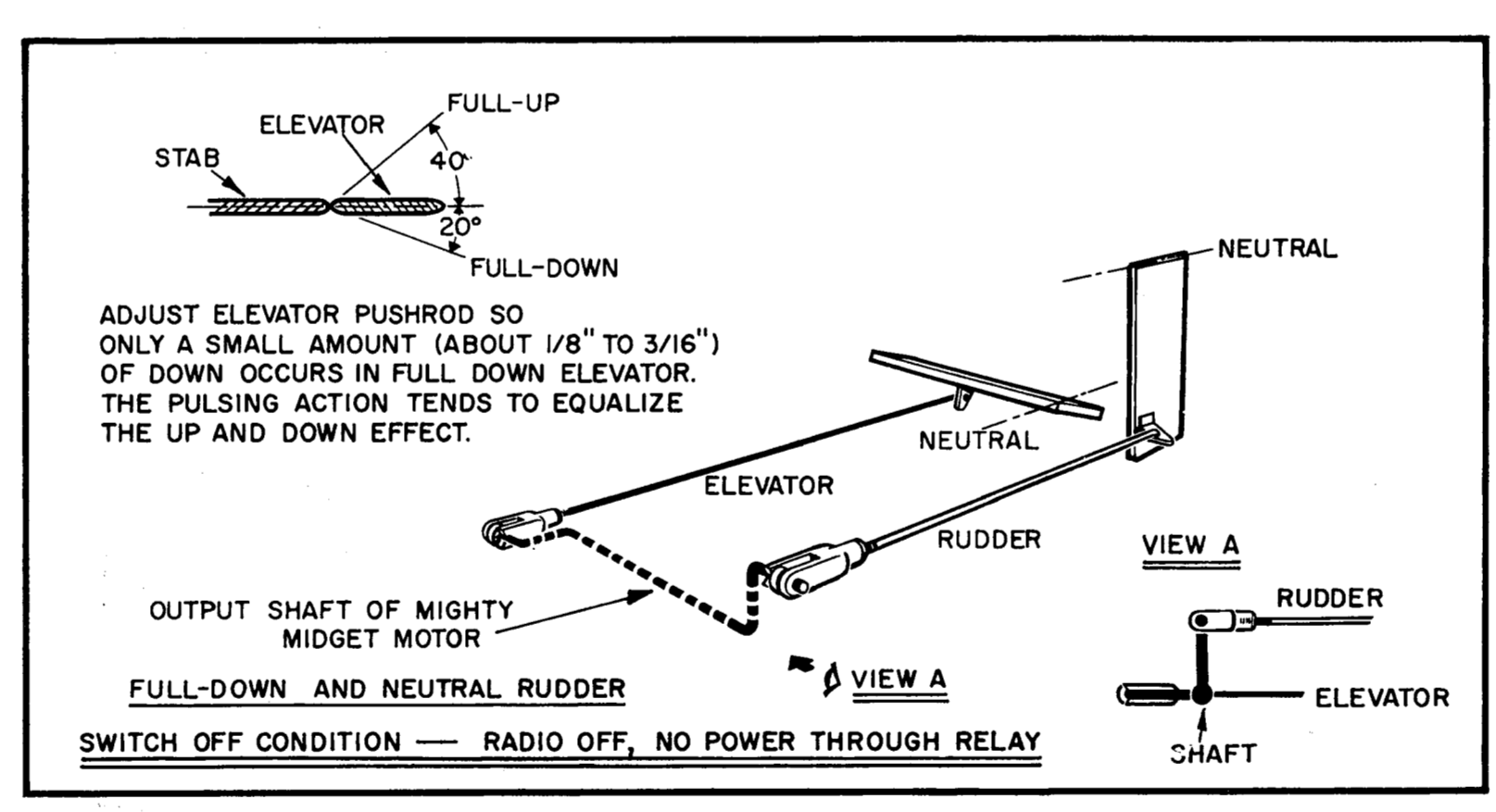
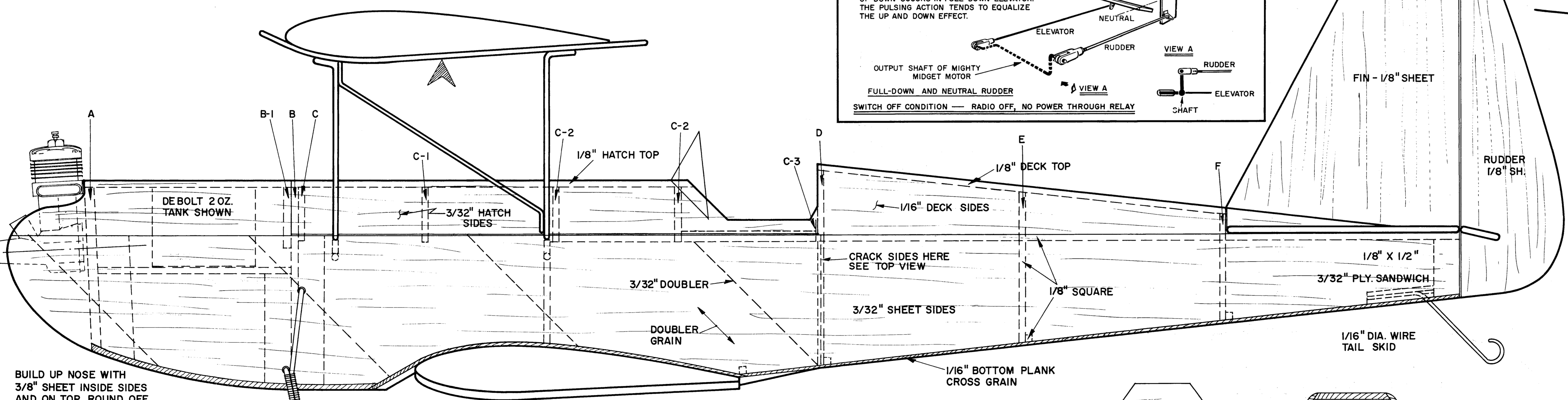


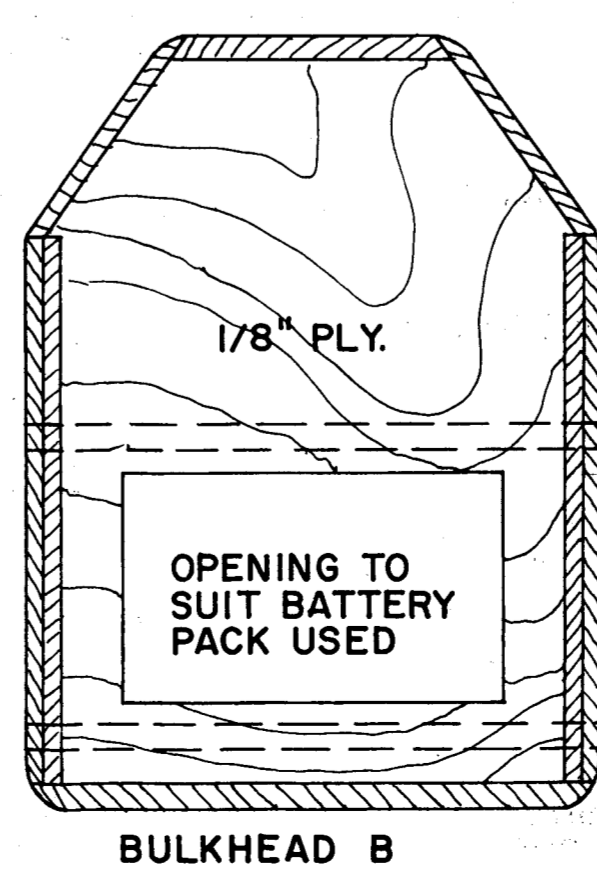
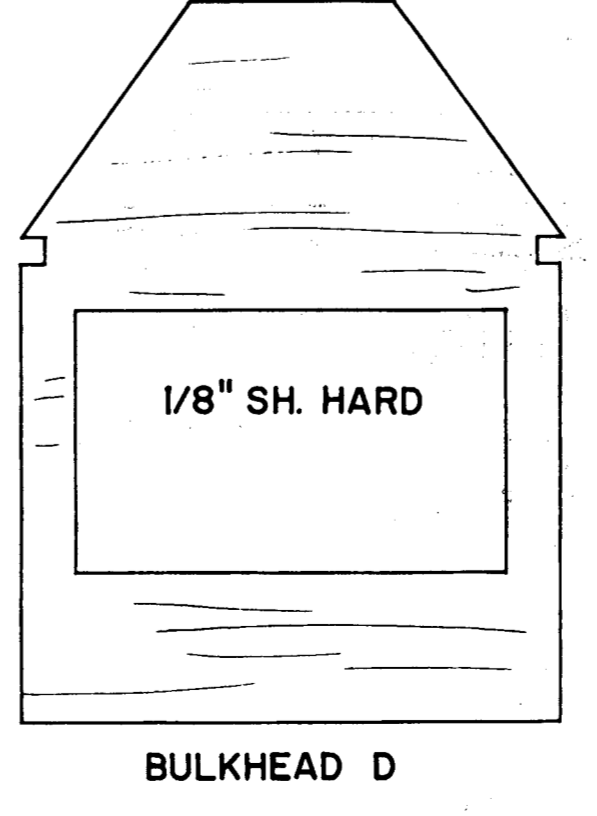
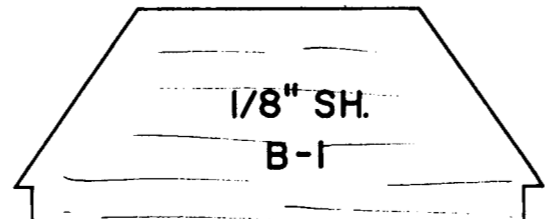
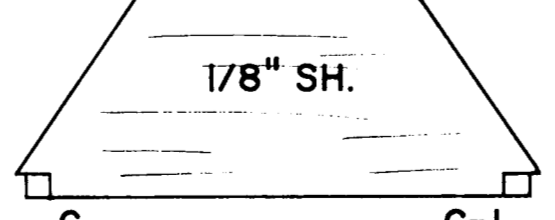
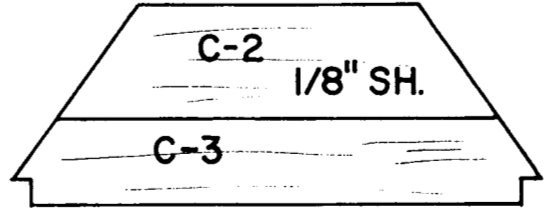
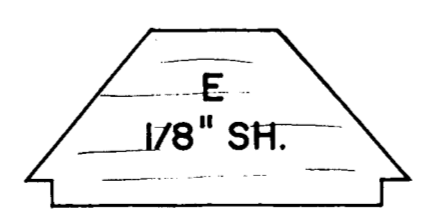
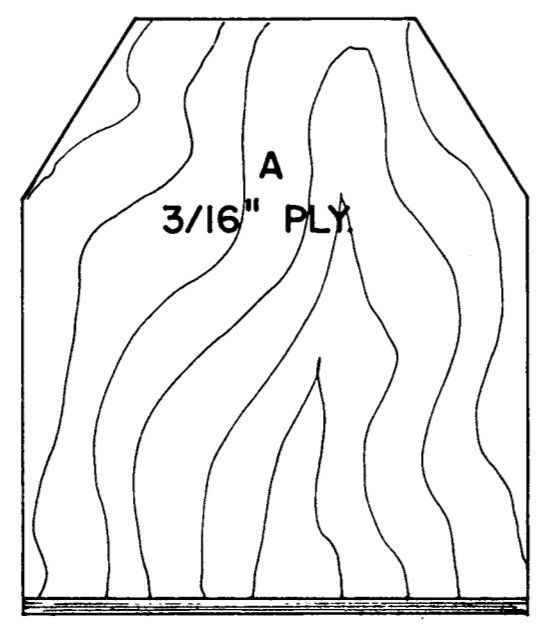
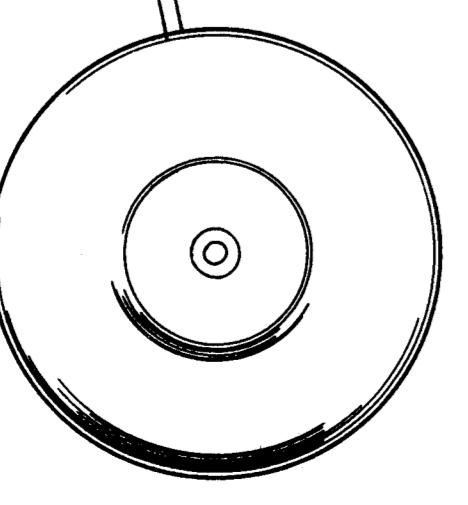
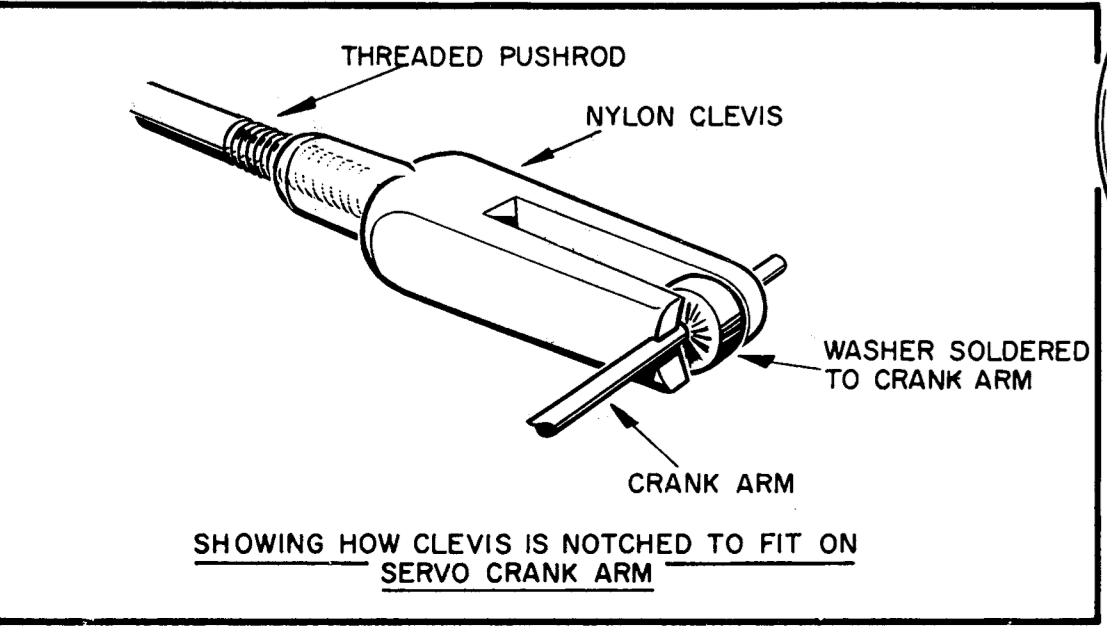
CRACK SIDES BY SCORING INSIDE AT LINE X. FORCE GLUE INTO CRACK. INSERT BULKHEAD D AND ALIGN FUSELAGE FOR DRYING. A FILLET OF GLUE CAN BE ADDED LATER.



**"THE GALLOPING JOHN" R.C.**  
 SPAN - 40" AREA - 475 SQUARE INCHES  
 FOR PULSE RUDDER, ESCAPEMENT GALLOPING GHOST, OR SMALL 6-CHANNEL EQUIPMENT FOR .09 TO .19 ENGINES.  
 DESIGNED BY: BILL NORTROP  
 DRAWN BY: JOSEPH W. WAGNER



BUILD UP NOSE WITH 3/8\"/>



1/16\"/>