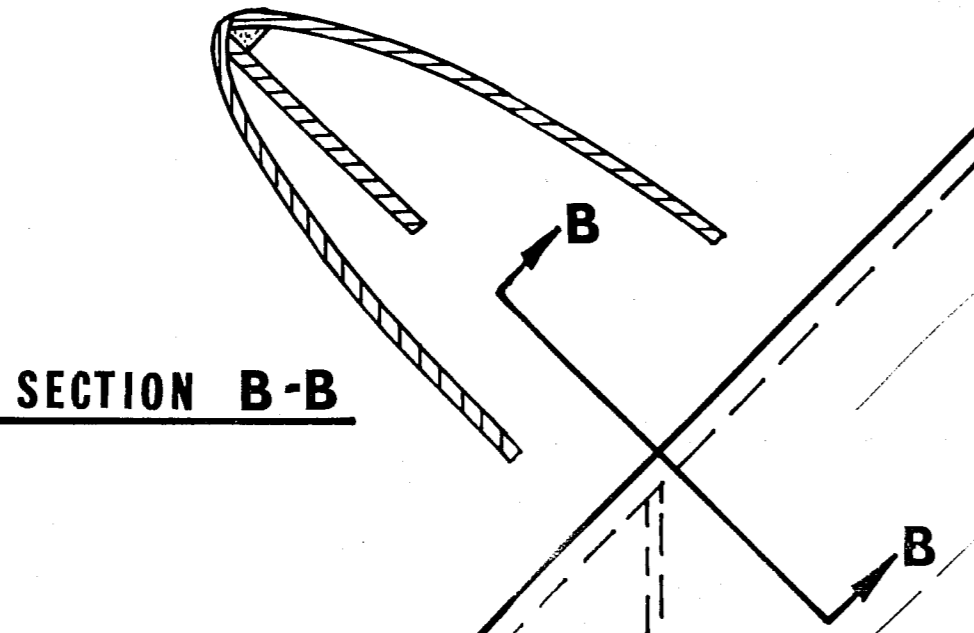
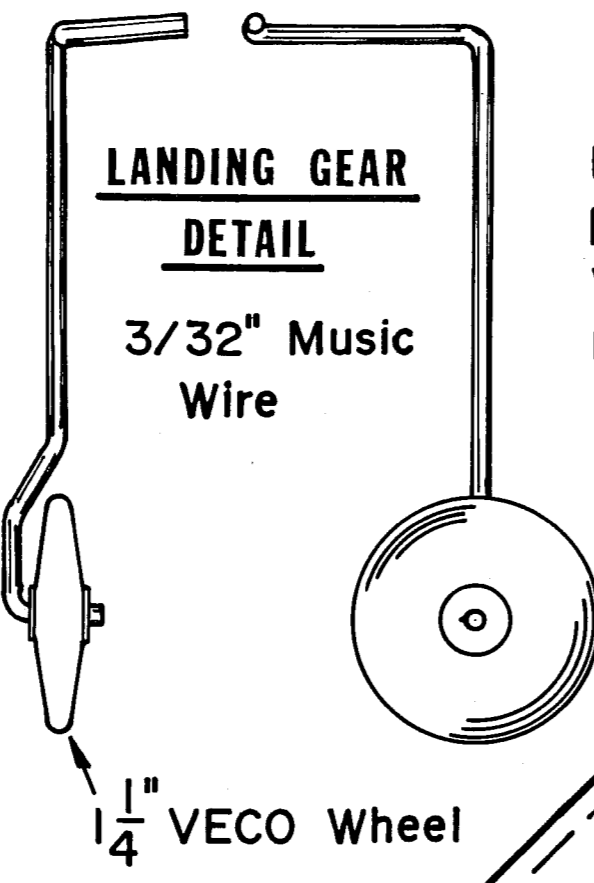
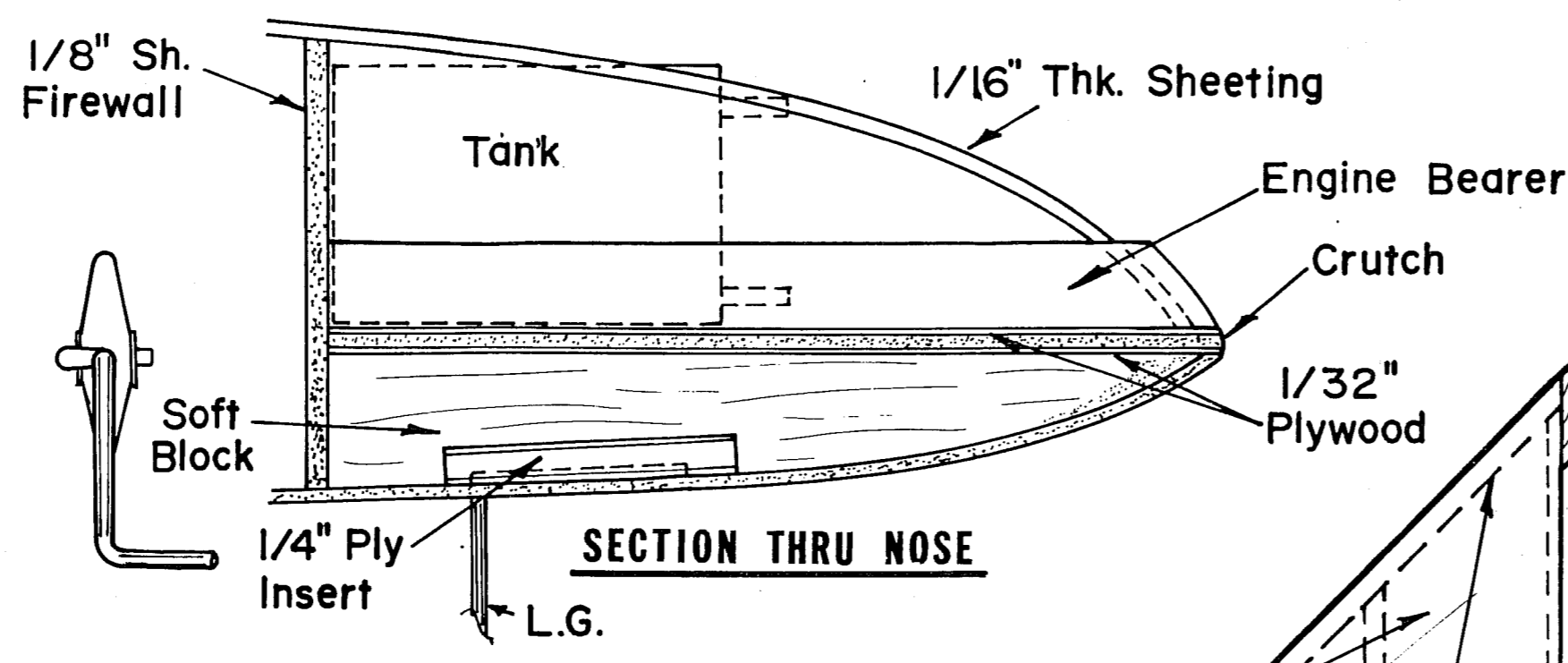
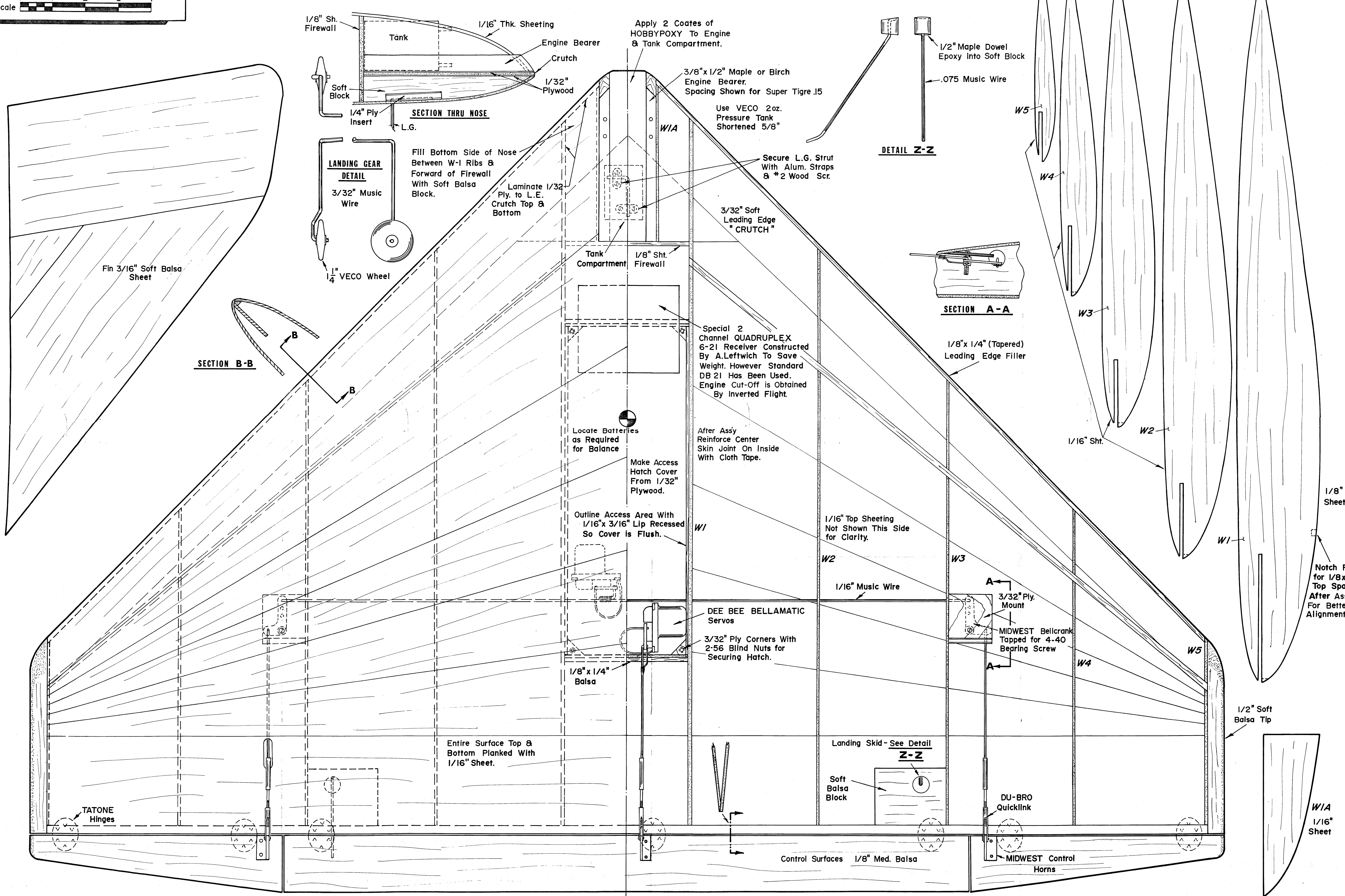
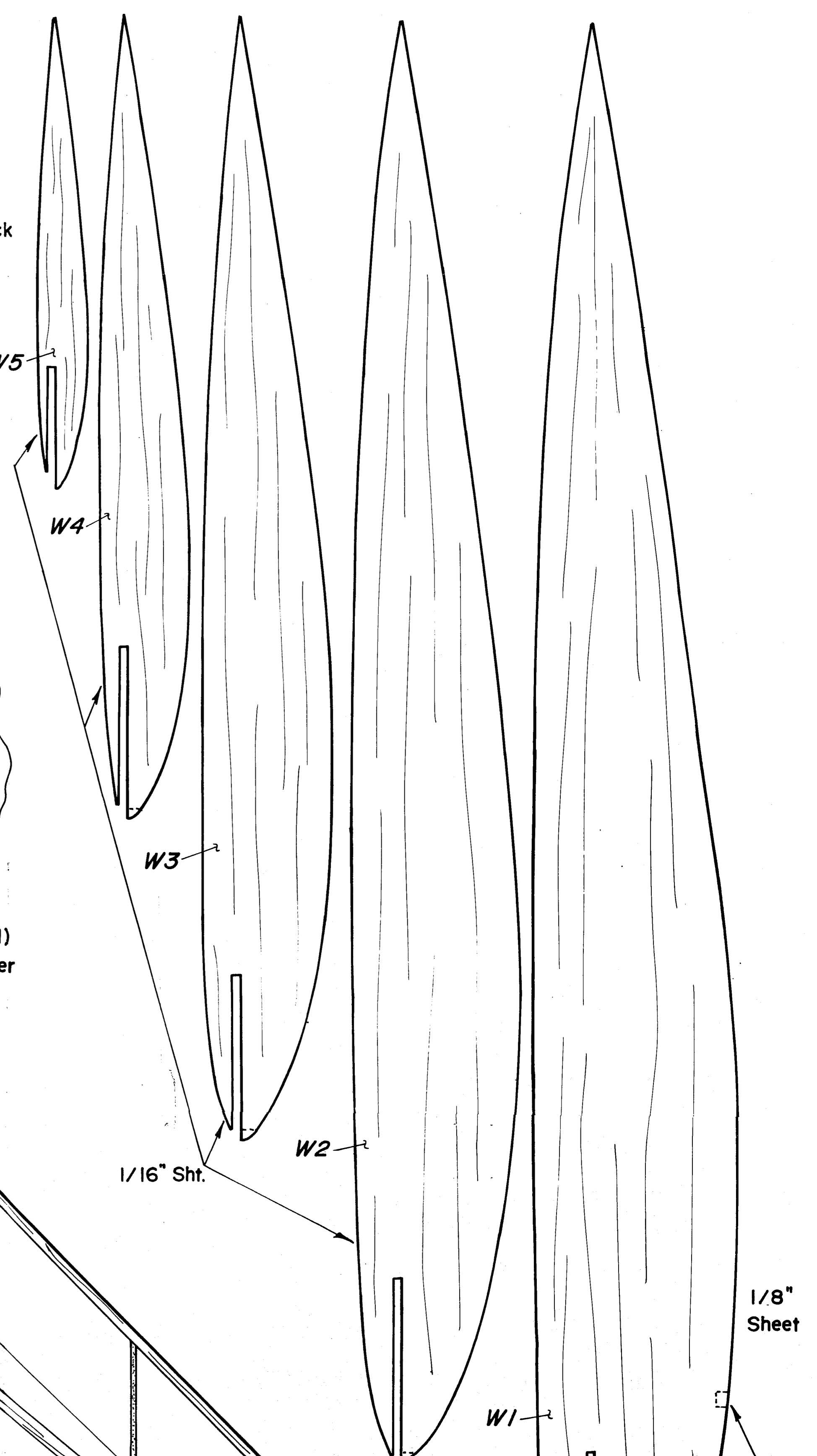
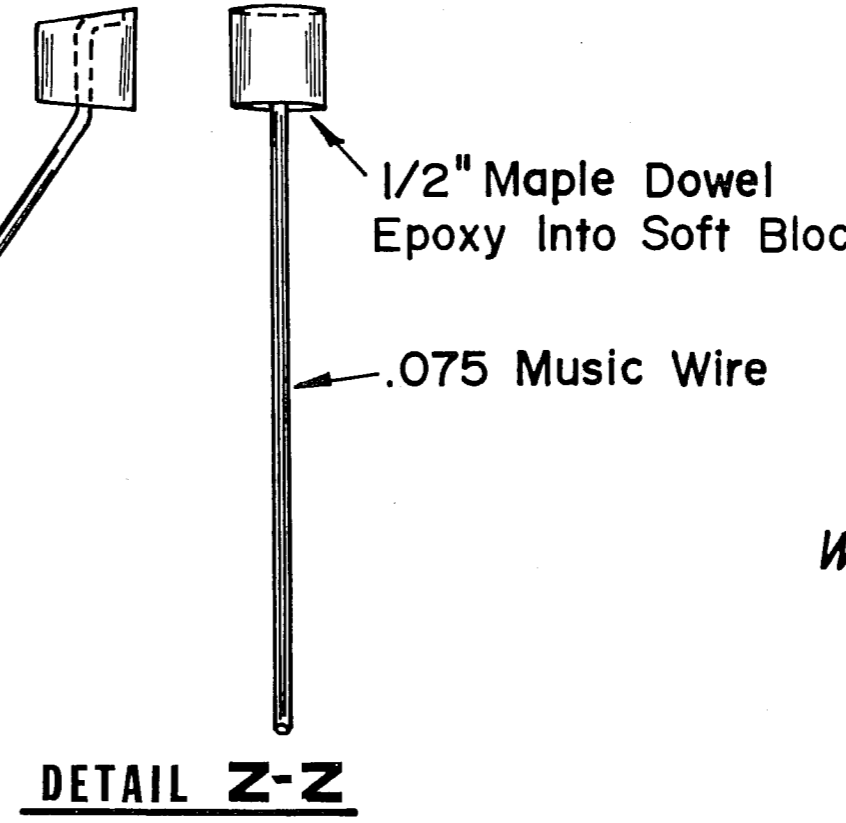


# Δ - TOO (DELTA-TOO)

Designed & Drawn By A.W. LEFTWICH  
Traced For M.A.N. By Al. Novotnik



Apply 2 Coates of HOBBYPOXY To Engine & Tank Compartment.  
3/8" x 1/2" Maple or Birch Engine Bearer. Spacing Shown for Super Tigre .15  
Use VECO 2oz. Pressure Tank Shortened 5/8"



Secure L.G. Strut With Alum. Straps & #2 Wood Scr.  
3/32" Soft Leading Edge "CRUTCH"  
Special 2 Channel QUADRUPLEX 6-21 Receiver Constructed By A.Leftwich To Save Weight. However Standard DB 21 Has Been Used. Engine Cut-Off is Obtained By Inverted Flight.

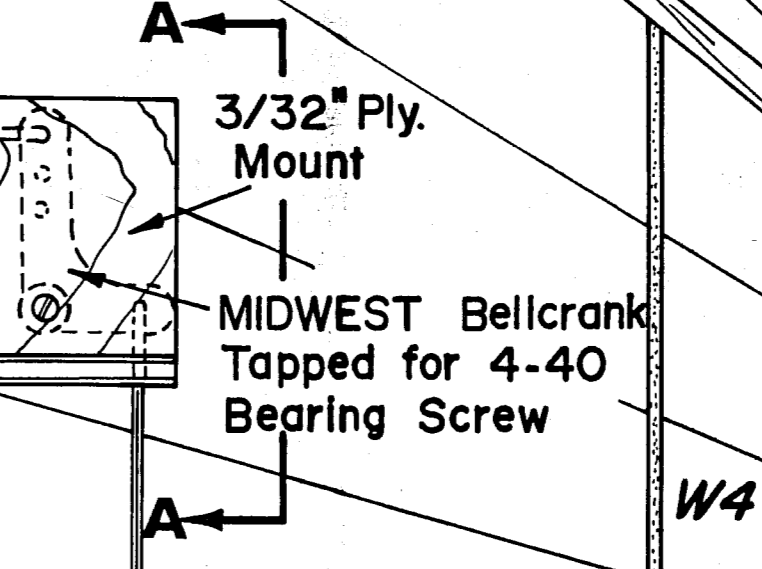
Locate Batteries as Required for Balance  
Make Access Hatch Cover From 1/32" Plywood.

Outline Access Area With 1/16" x 3/16" Lip Recessed So Cover is Flush.

After Assy Reinforce Center Skin Joint On Inside With Cloth Tape.

1/16" Top Sheeting Not Shown This Side for Clarity.

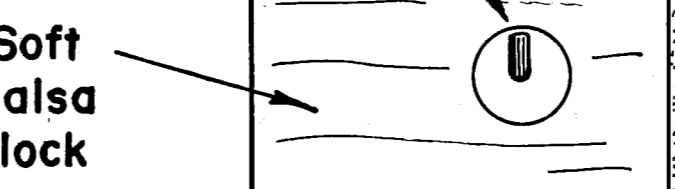
DEE BEE BELLAMATIC Servos  
3/32" Ply Corners With 2-56 Blind Nuts for Securing Hatch.



1/8" x 1/4" Balsa

Entire Surface Top & Bottom Planked With 1/16" Sheet.

Landing Skid - See Detail Z-Z



DU-BRO Quicklink

MIDWEST Control Horns

Control Surfaces 1/8" Med. Balsa

1/2" Soft Balsa Tip

W1A 1/16" Sheet

Notch Ribs for 1/8x3/16 Top Spar After Assy For Better Alignment.

Fin 3/16" Soft Balsa Sheet

TATONE Hinges