

No 1

NO. 2

FIN

LONGERONS ARE
 $\frac{1}{16}$ " x $\frac{1}{16}$ " WHITE HOLLY

JOIN NO. 1
← HERE

TAIL SKID
.032 WIRE

SEE NO. 3
FOR SHOCK-
ABSORBER
DETAILS

LANDING GEAR DETAIL

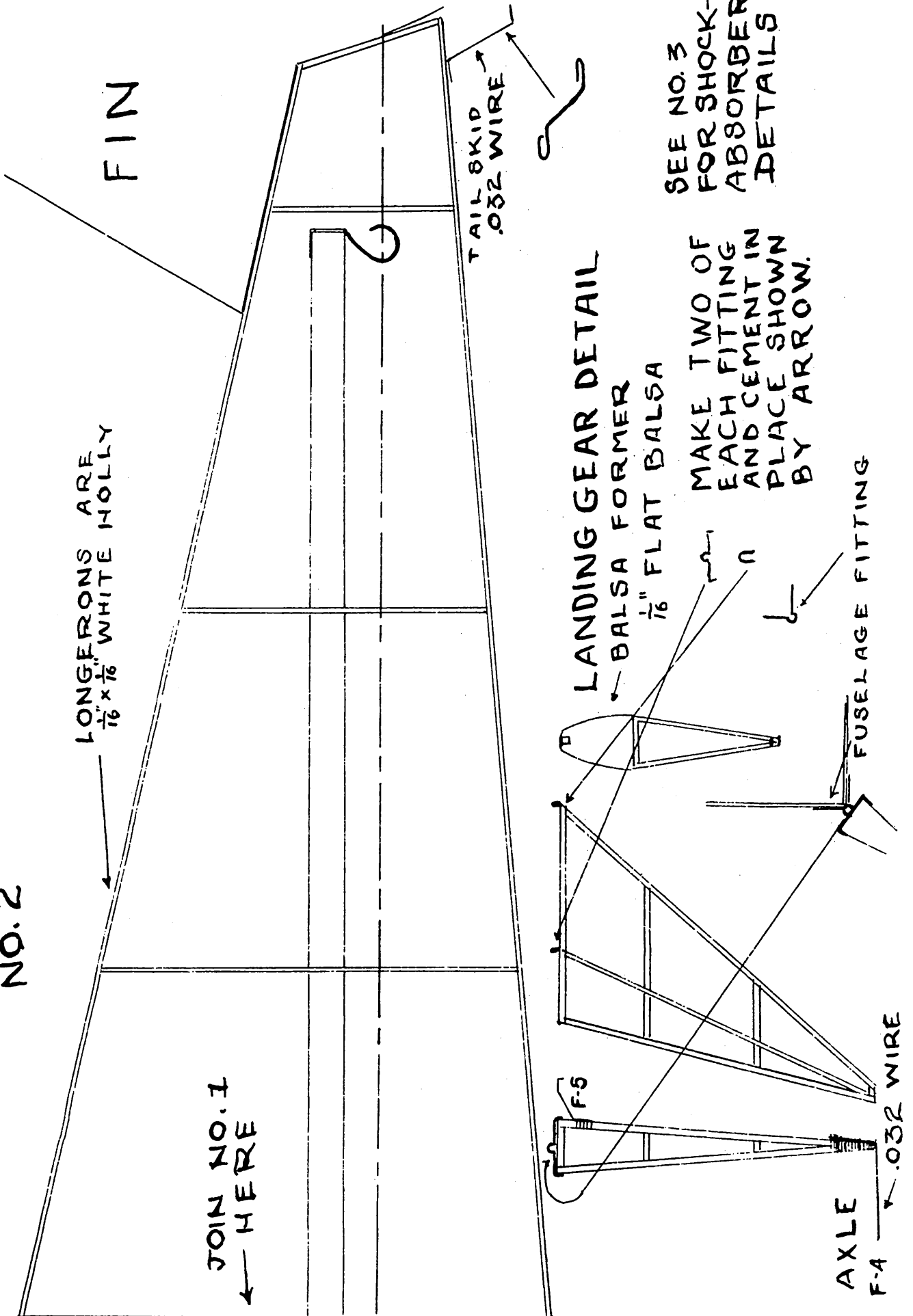
← Balsa FORMER

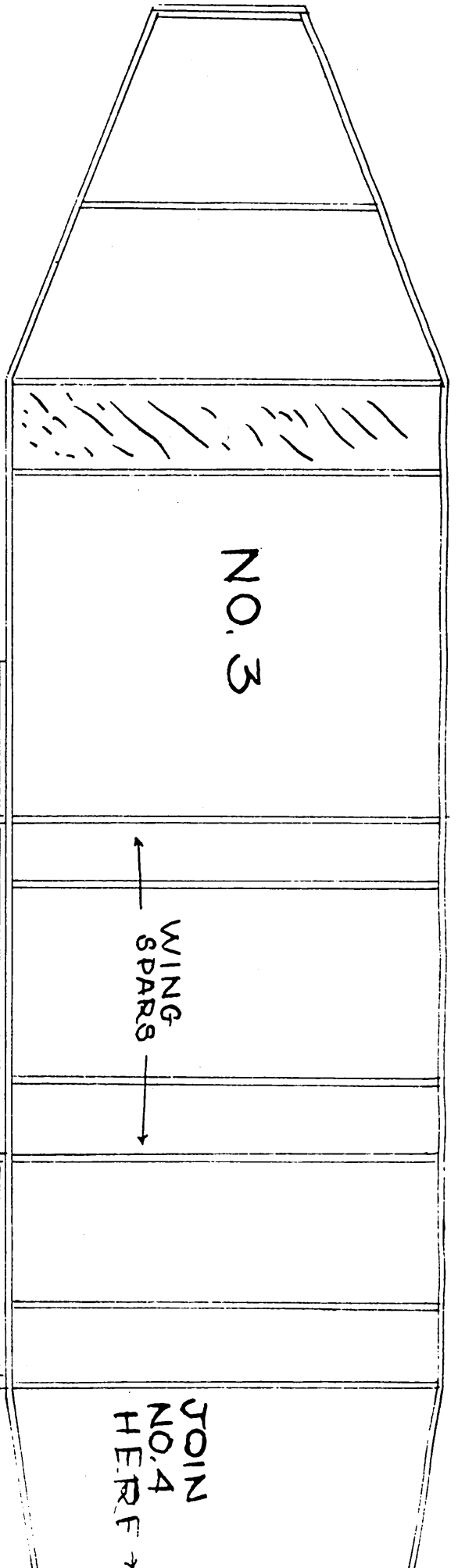
$\frac{1}{16}$ " FLAT BALSA

MAKE TWO OF
EACH FITTING
AND CEMENT IN
PLACE SHOWN
BY ARROW.

FUSELAGE FITTING

AXLE
F-4 ← .032 WIRE

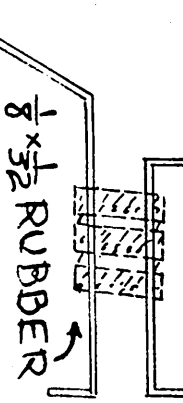




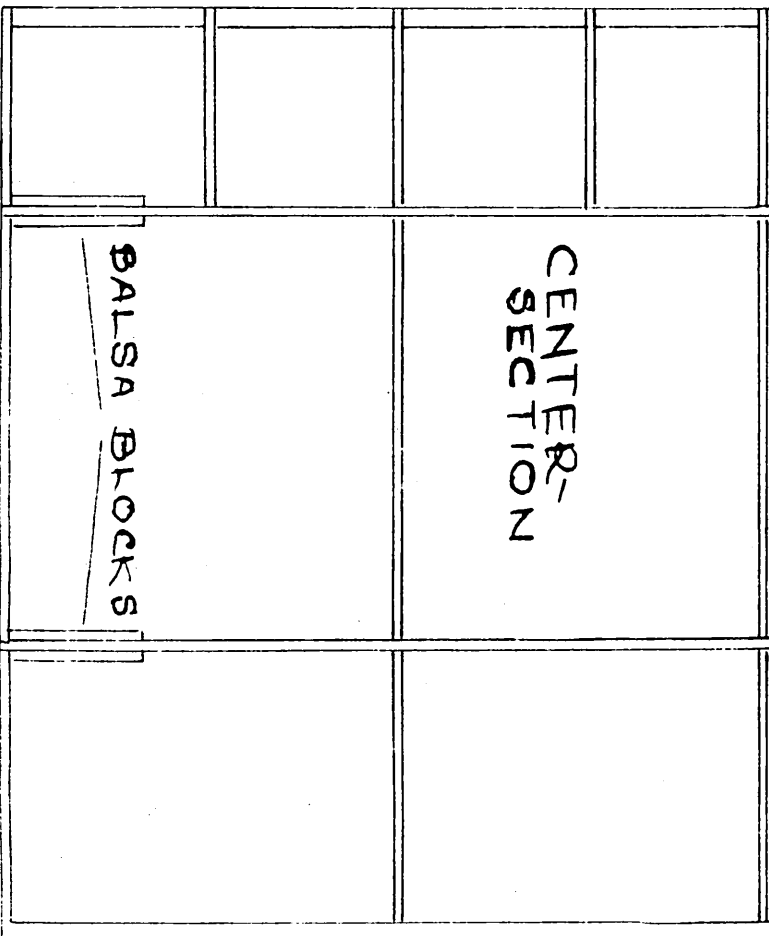
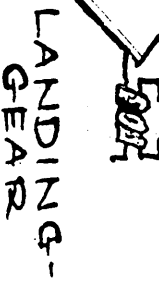
JOIN WING TO THIS CENTER-SECTION WITH 2 PINS

SHOCK-ABSORBER FOR LANDING GEAR

FITTINGS (ENLARGED)



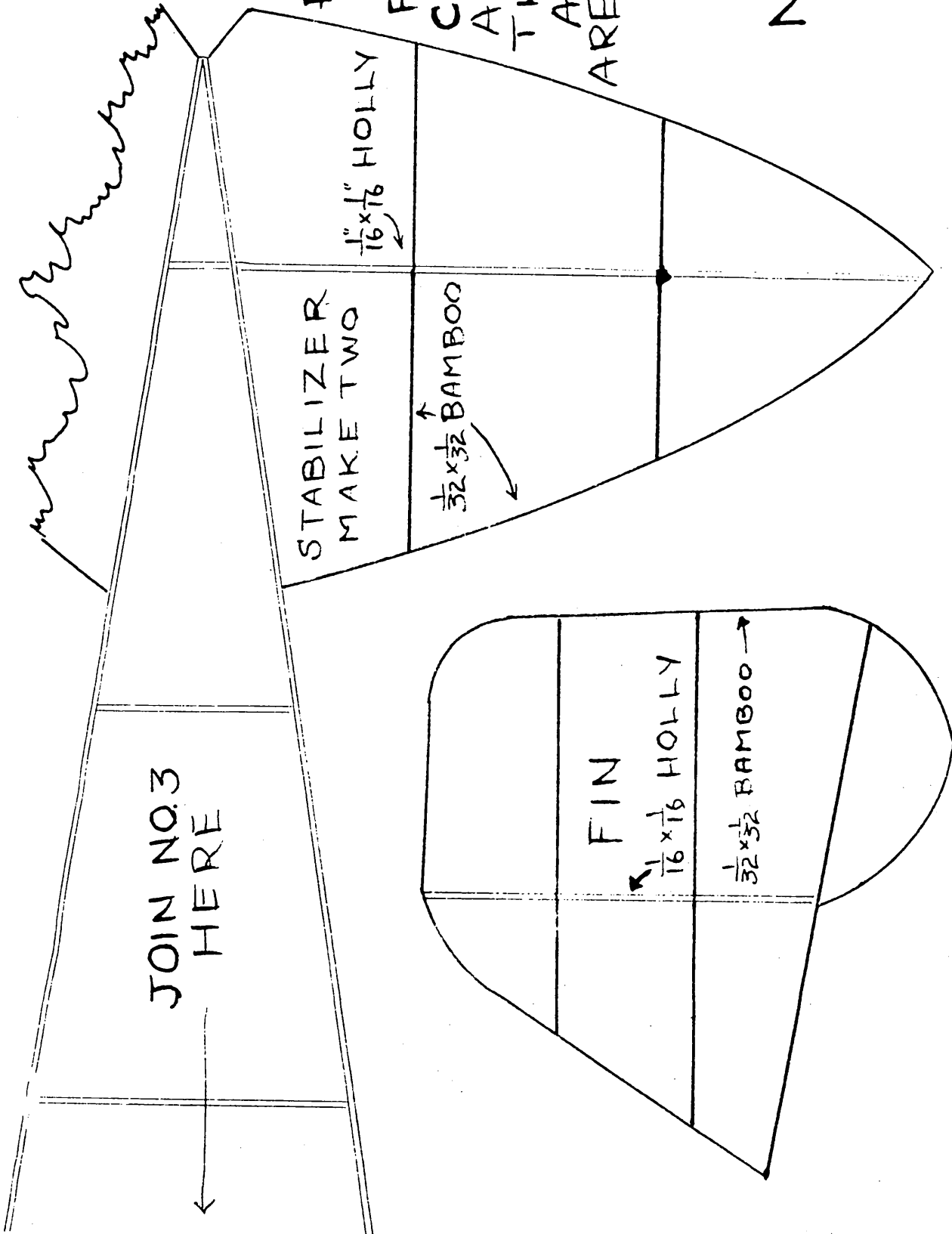
FUSELAGE

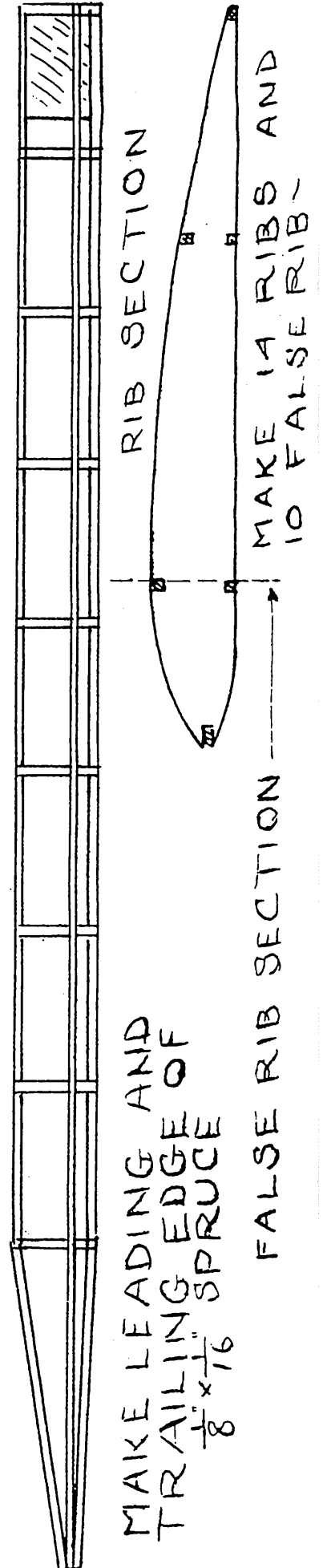
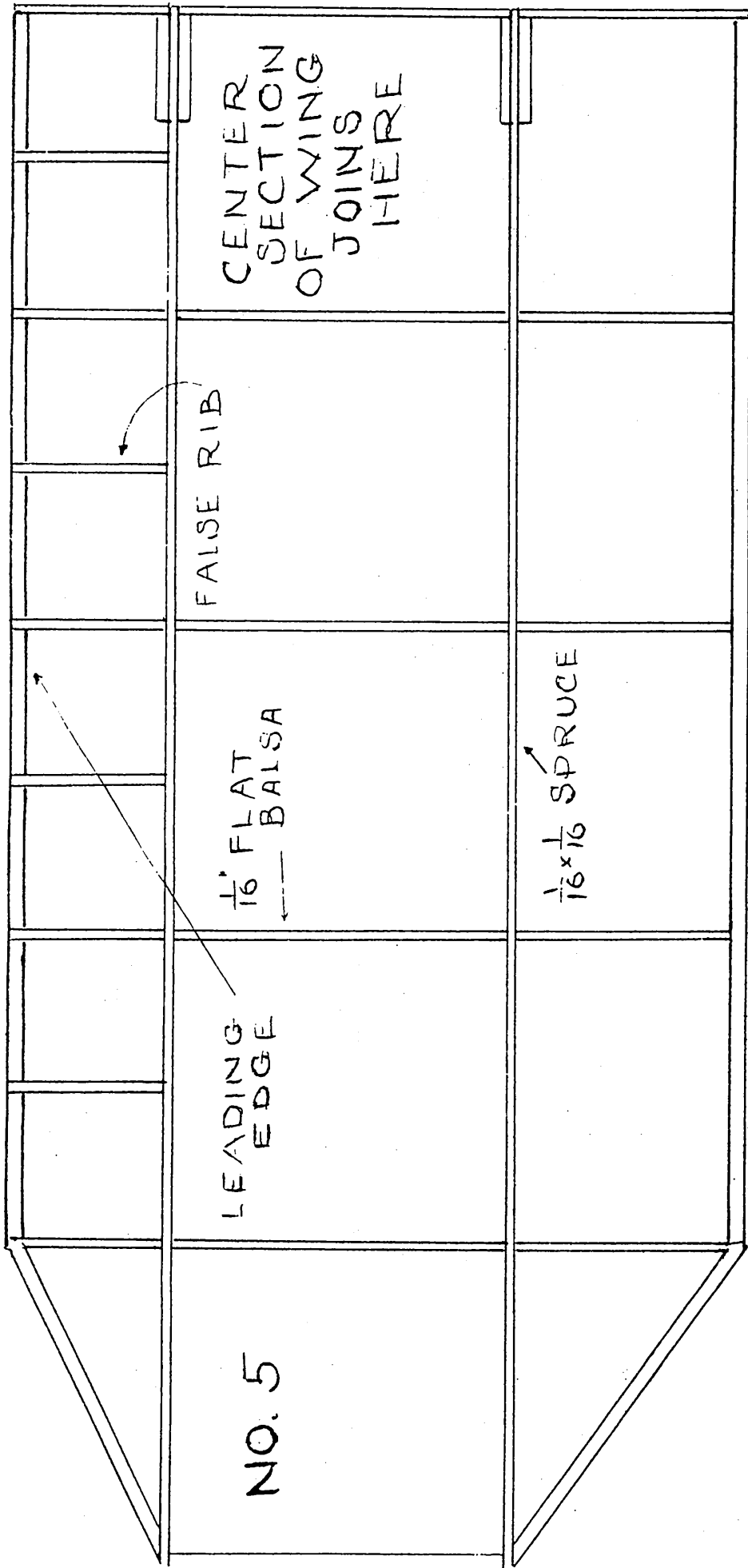


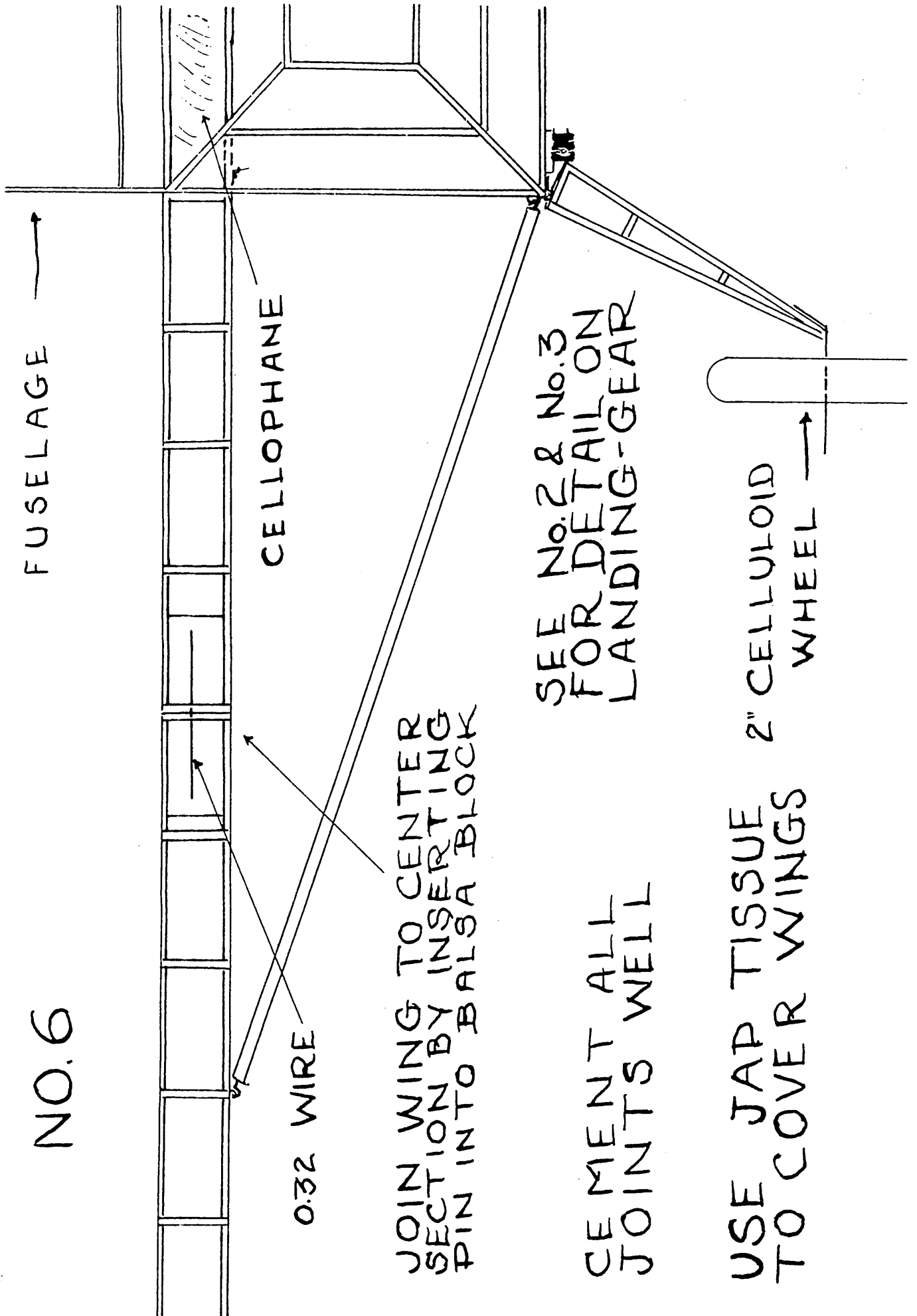
JOIN NO. 4 HERE

NOTE
TO GET A
FULL-SIZE
PLAN OF
THE
FUSELAGE,
CUT OUT
AND PASTE
THE PAGES
AS THEY
ARE NUMBERED

NO. 4







NO. 6

FUSELAGE

CELLOPHANE

0.32 WIRE

JOIN WING TO CENTER SECTION BY INSERTING PIN INTO Balsa BLOCK

SEE No. 2 & No. 3 FOR DETAIL ON LANDING-GEAR

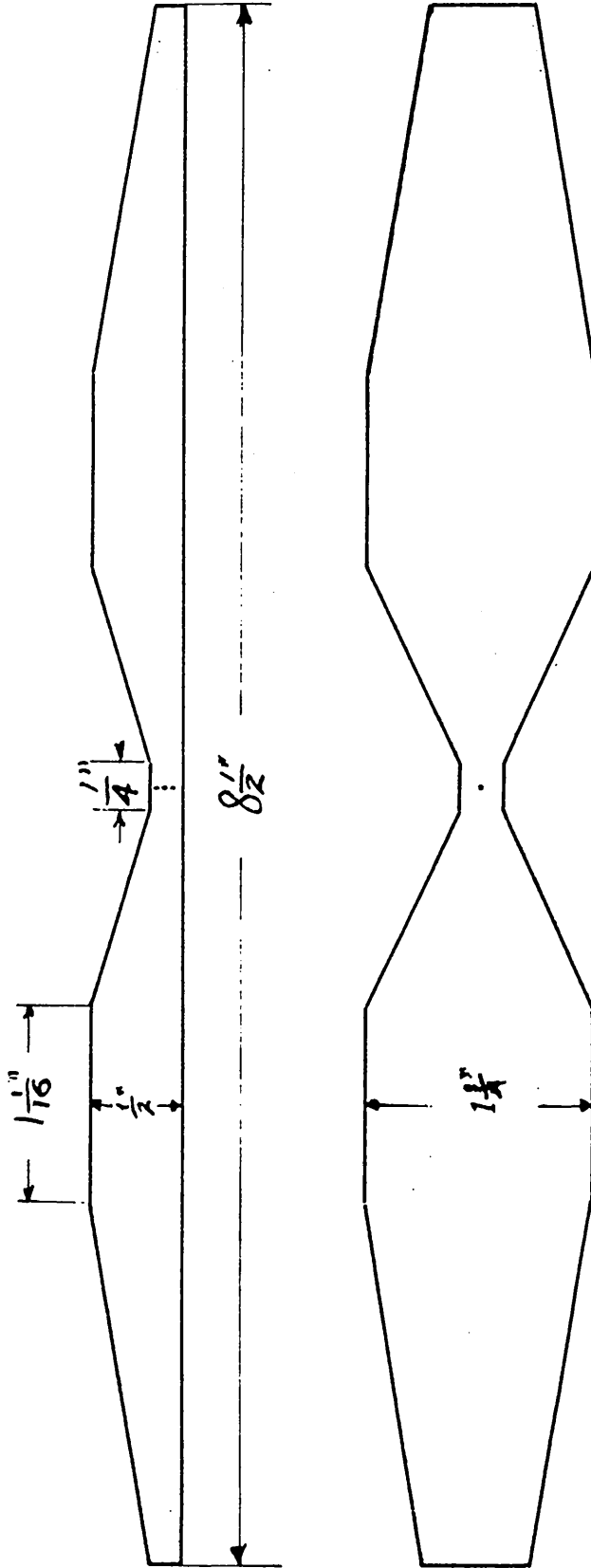
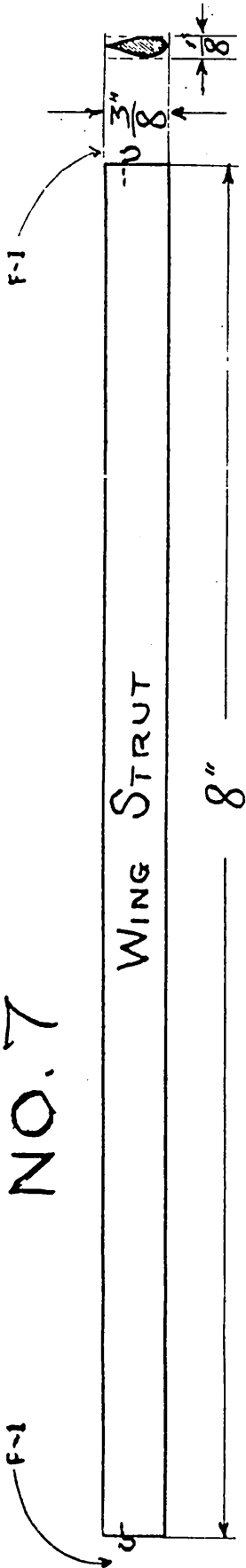
CEMENT ALL JOINTS WELL

USE JAP TISSUE TO COVER WINGS

2" CELLULOID

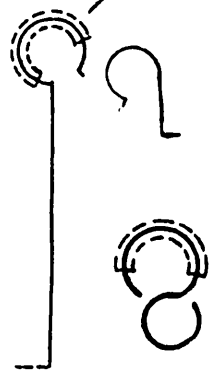
WHEEL

NO. 7



PROP

PROP SHAFT'S HOOK, REAR HOOK ARE MADE FROM .032 MUSIC WIRE



RUBBER TUBING OR SPAGHETTI WIRE