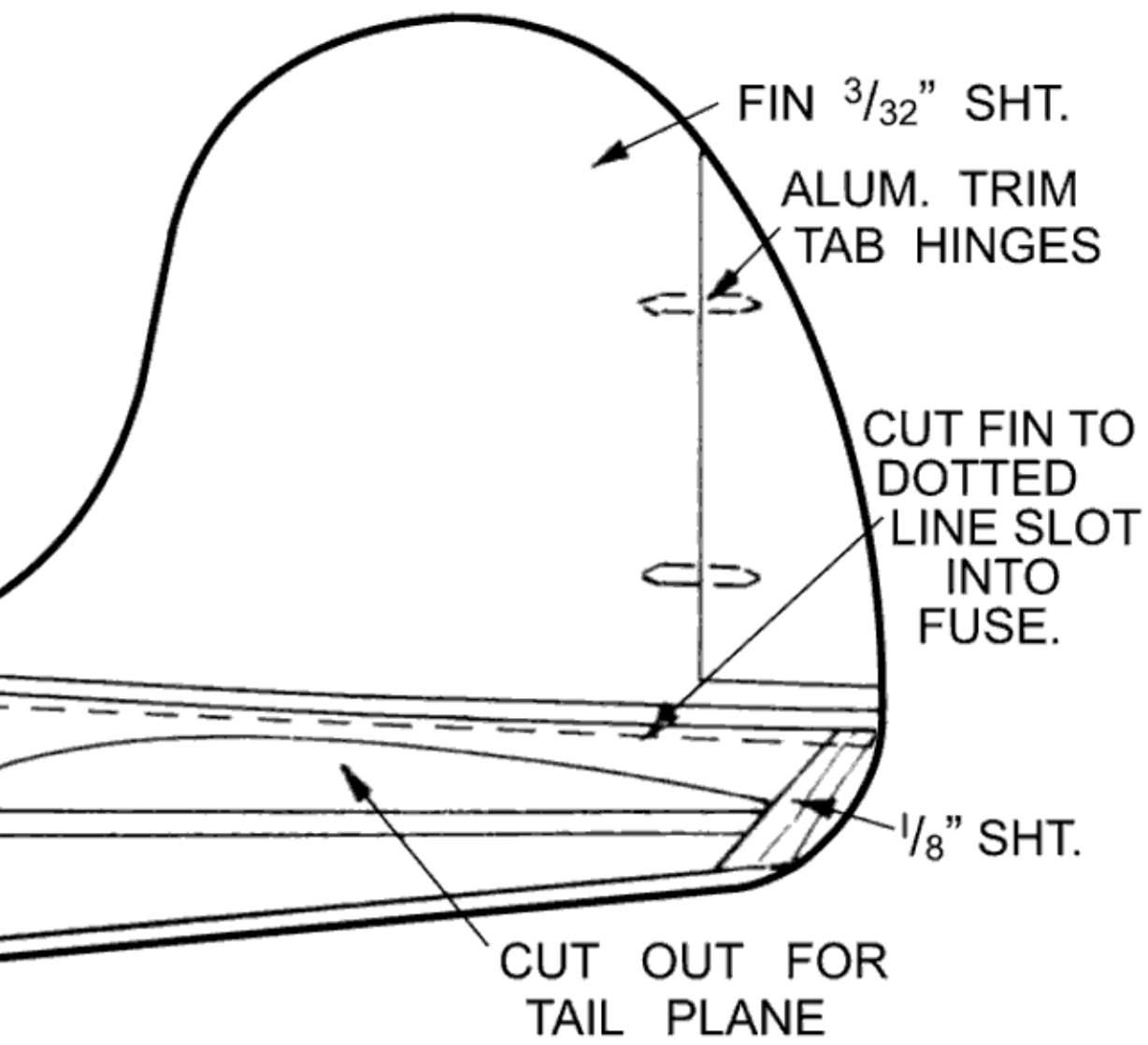
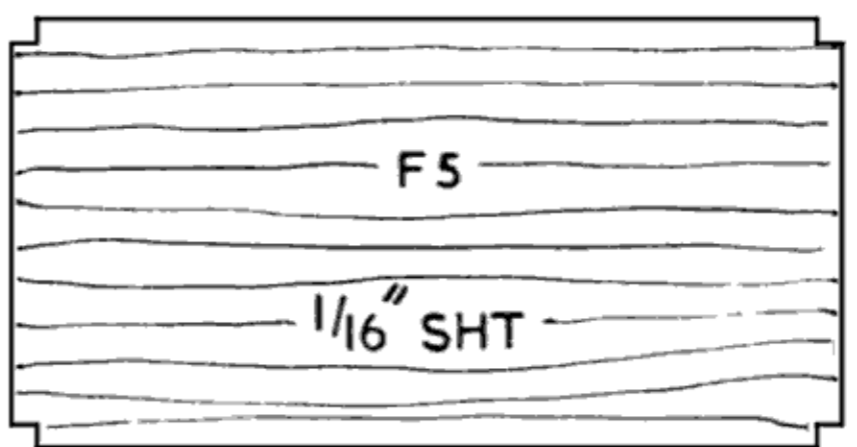


COWL FORWARD OF F1 REINFORCED WITH 1/16" SHT. GRAIN VERTICAL

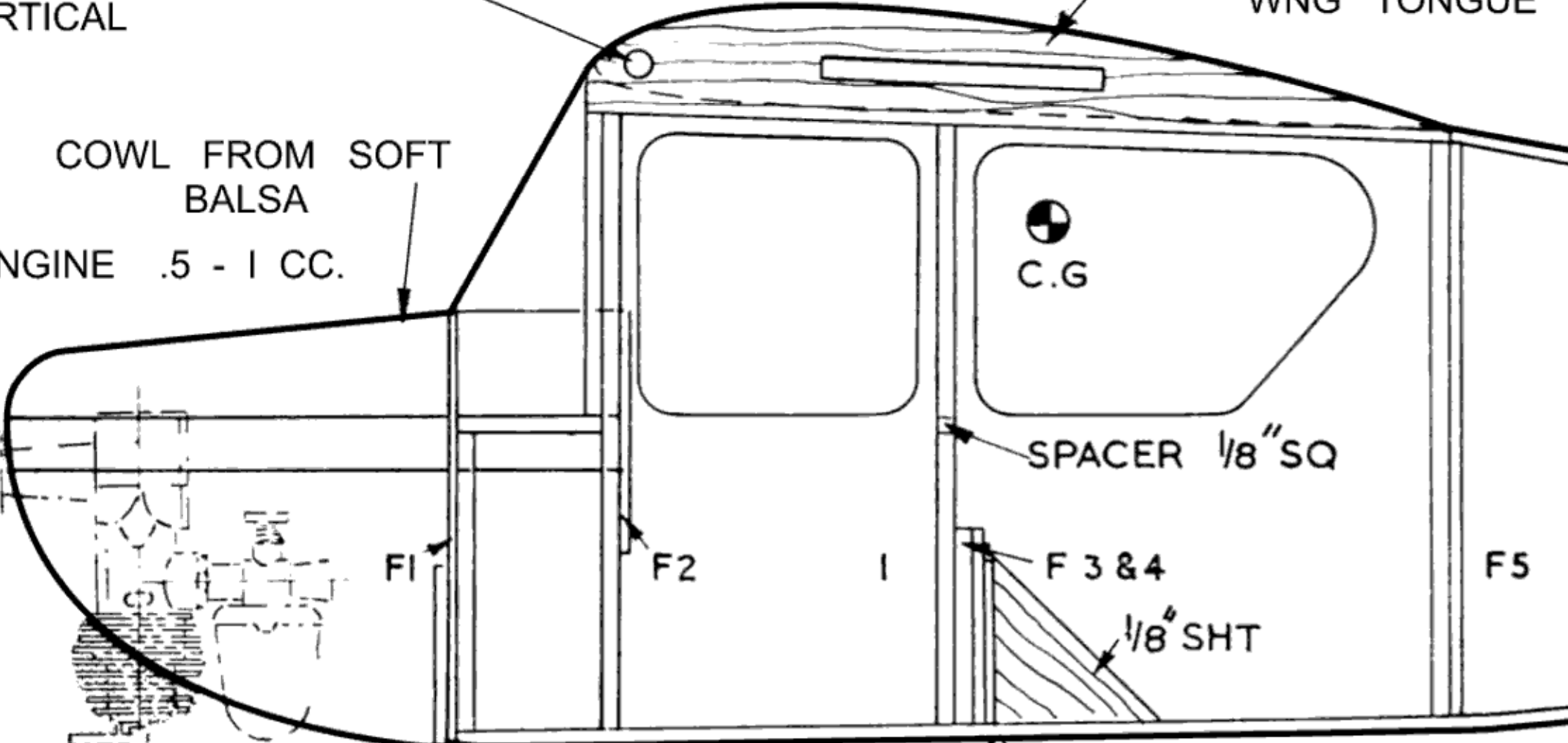
HOLE FOR RUBBER RETAINING BAND

CUT F6 FROM 1/8" SHT. CEMENTED INSIDE OF 1/16" SHT. REINFORCING FOR WNG TONGUE

ALL LONGERONS AND UPRIGHTS OF 1/8" SQ.



COWL FROM SOFT BALS
ENGINE .5 - 1 CC.



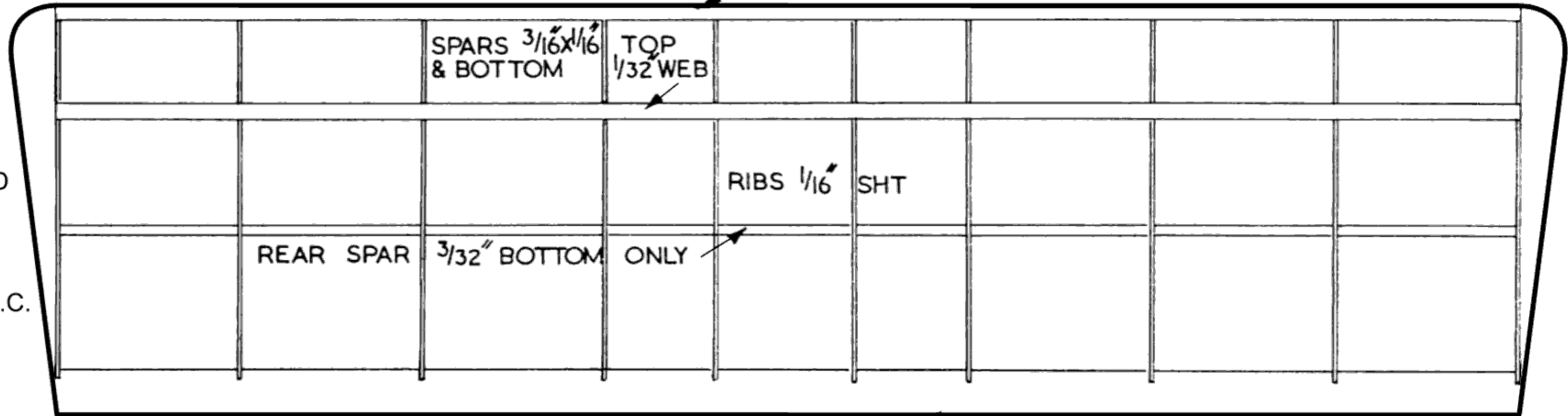
SIDES TOP & BOTTOM OF 1/16" SHT

3/8" x 1/8"

OVERLAP TO ALLOW FOR UNDERSHEETING

14 G. WIRE

WHEELS 1 1/2" D



DEVELOPMENT OF FRONT U.C. BIND & CEMENT TO F1

WING TONGUE 1/8" HARD BALS

DEVELOPMENT OF U.C.

BEARER 3/8" x 1/4"

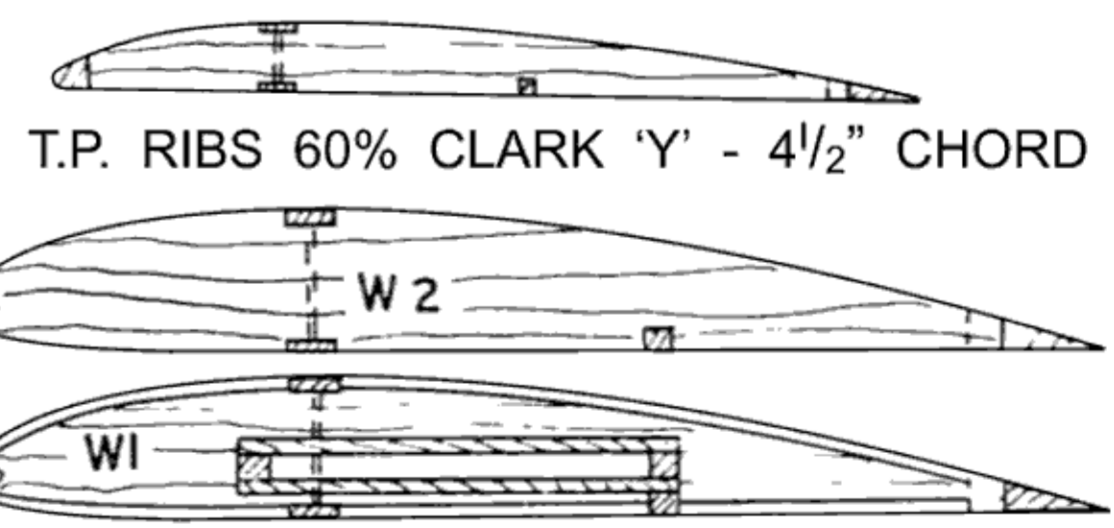
DIRECTION OF GRAIN ON CABIN ONLY

COVER 1 ST. BAY WITH 1/16" SHT.

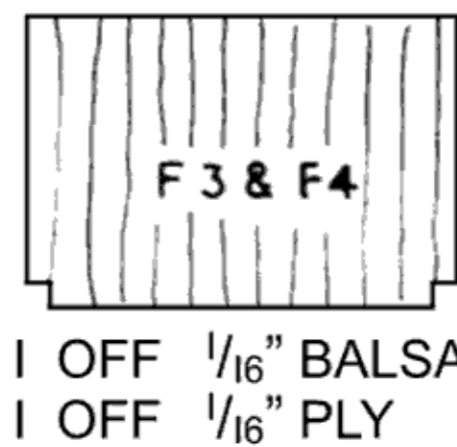
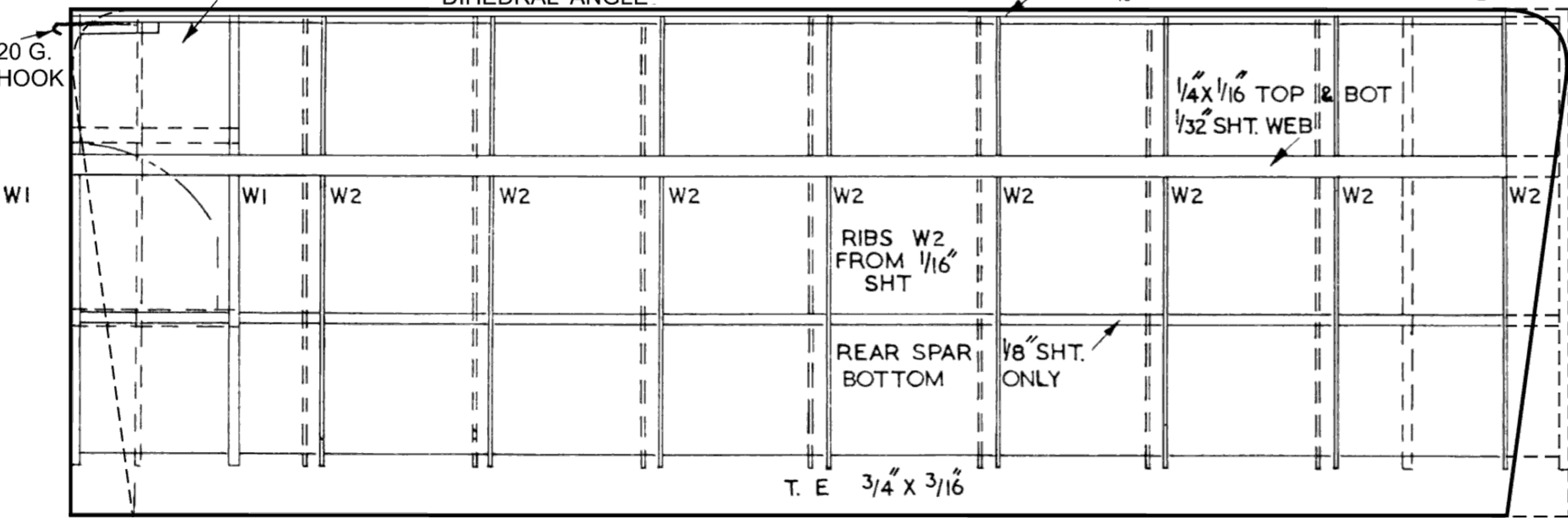
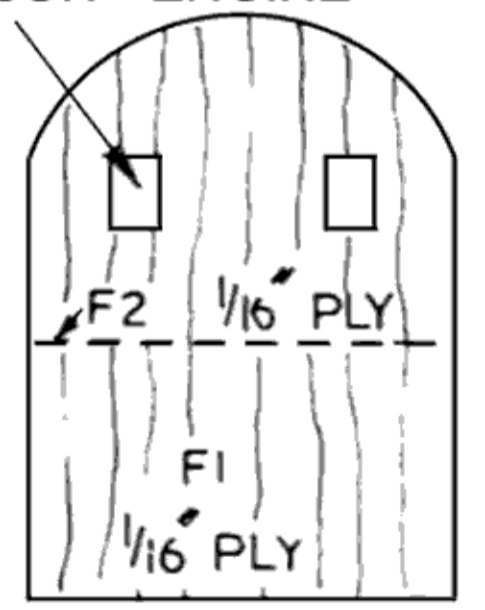
CRACK & CEMENT TO CORRECT DIHEDRAL ANGLE

L.E. 3/16" SHT.

1/2" DIHEDRAL



POSITION BEARER TO SUIT ENGINE



FANTASM
P CAMPBELL
SPAN 38" LENGTH 27"
COPYRIGHT MODEL AIRCRAFT
19-20 NOEL ST LONDON W1