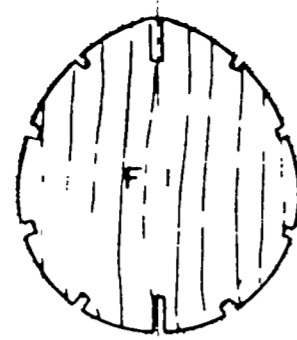
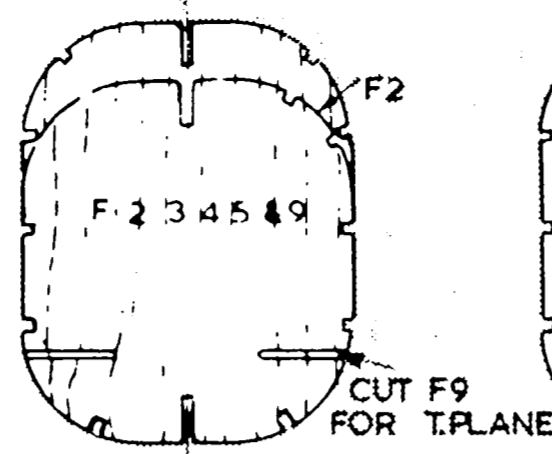


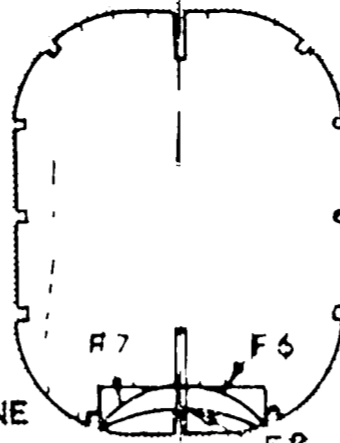
NOSE BLOCK



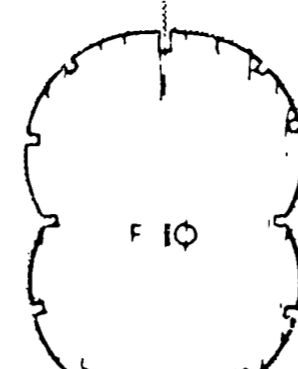
F1
1/8" SHT.



F2 3 4 5 6 9
CUT F9 FOR T.PLANE



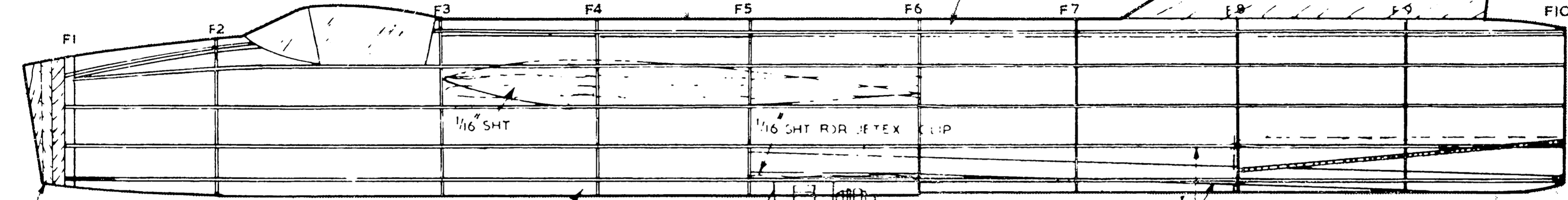
F7 F6 F8



F10

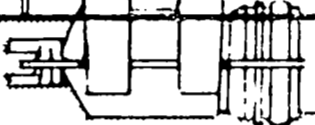
FORMERS F2-F9 1/32" SHT.
FORMERS F5 & F10 1/16" SHT.

1/16" SHT RUDDER



LAMINATED 1/8" SHT

BOTTOM KEEL 1/4" x 1/16"



JETEX 50 OR 500 UNIT

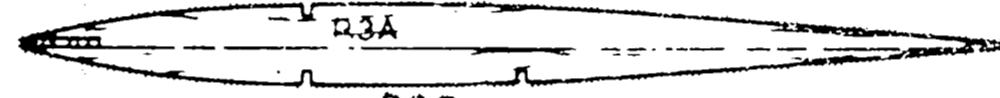
ALL STRINGERS 1/16" SQ.



R1A

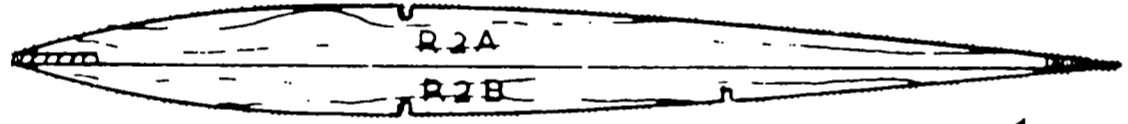
R1B

RIB R1A & B. 1/16" SHT
ALL OTHERS 1/32" SHT



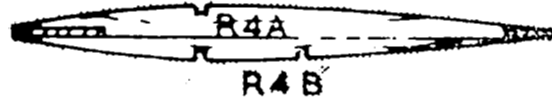
R3A

R3B



R2A

R2B



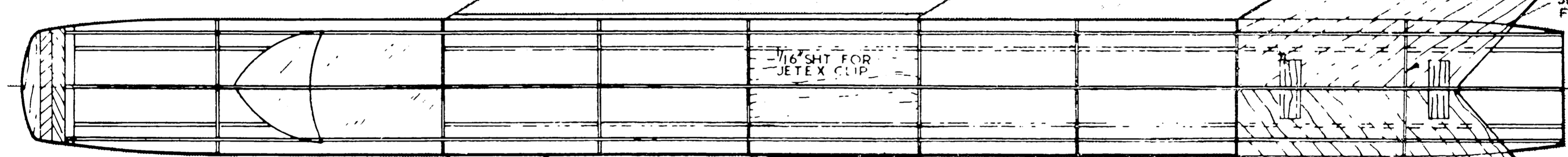
R4A

R4B

TAIL PLANE 1/16" SHT.
IN HALVES. JOIN ON
C.L.

1/4" x 1/16" SHT SCRAP
STRENGTHENING
PIECES

SLOT T.P. TO
FIT IN SLOT
IN F9



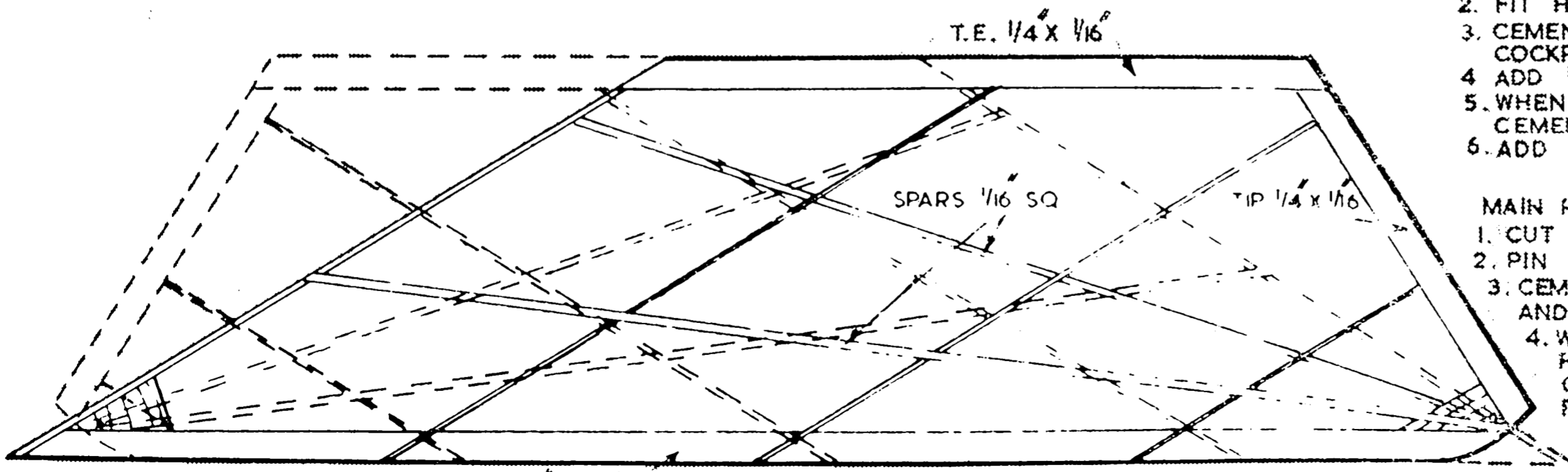
COVER FUSELAGE WITH LIGHT TISSUE
WATER SPRAY AND APPLY CLEAR DOPE

FUSELAGE CONSTRUCTION:-

1. PIN KEELS TO PLAN
2. FIT HALF FORMERS F1-F10 AND CEMENT
3. CEMENT STRINGERS IN POSITION & CUT AWAY COCKPIT SECTION
4. ADD 1/16" SHT. AT MAIN PLANE ROOT POSITION
5. WHEN CEMENT IS SET REMOVE FROM PLAN AND CEMENT OTHER HALF FORMERS & STRINGERS IN PLACE
6. ADD NOSE BLOCK & JET MOUNTING

MAIN PLANE CONSTRUCTION -

1. CUT OUT RIBS, L.E. & T.E.
2. PIN L.E., T.E. & TIP TO PLAN
3. CEMENT TOP HALVES OF RIBS IN PLACE AND ADD TOP SPAR
4. WHEN CEMENT HAS SET REMOVE FROM PLAN & ADD BOTTOM HALVES OF RIBS & SPARS. MAKE GUSSETS FROM SCRAP & CEMENT IN PLACE



T.E. 1/4" x 1/16"

SPARS 1/16" SQ

TIP 1/4" x 1/16"

L.E. 1/4" x 1/16"

ENGLISH ELECTRIC
P.1A
M.A.
202 C.F. BASSETT 2/16
SPAN 13 1/2" LENGTH 19"
COPYRIGHT MODEL AIRCRAFT
19-20 NOEL ST. LONDON W1