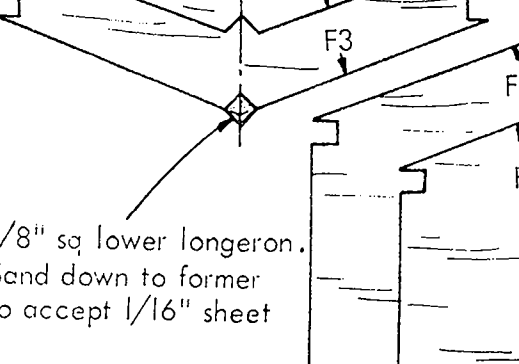
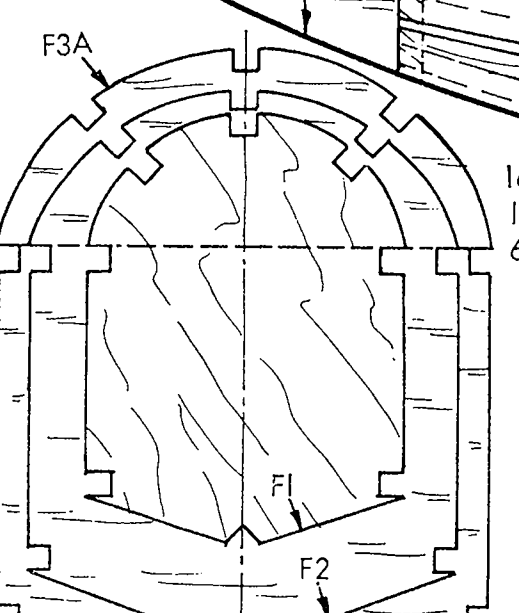
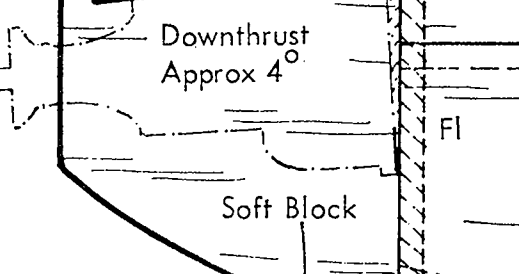
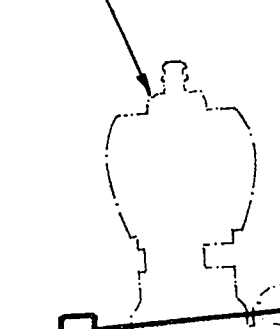


PLAN VALUE
3/6

Cox Babe Bee



Formers
F1 1/8" ply
Remainder
from 1/8" she

FRONT WING POSITION.

Fin Spar 1/8" sheet

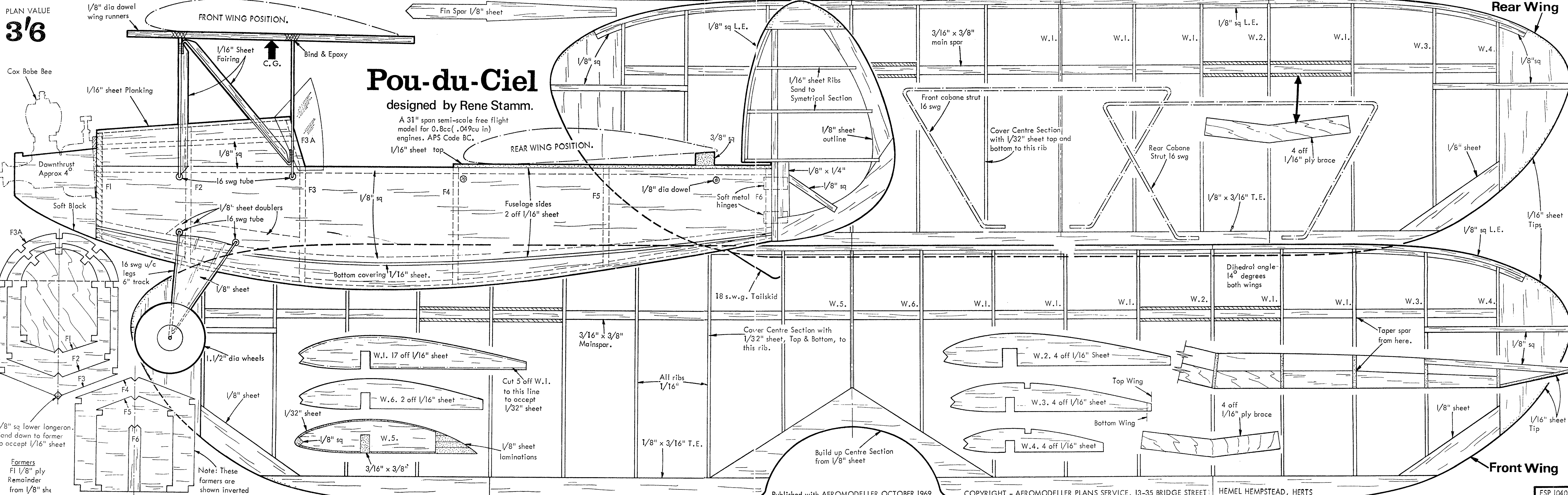
Pou-du-Ciel

designed by Rene Stamm.

A 31" span semi-scale free flight model for 0.8cc (.049cu in) engines. APS Code BC.

REAR WING POSITION.

Rear Wing



1/8" dia dowel wing runners

1/16" Sheet Fairing

Bind & Epoxy

C.G.

1/16" sheet Planking

Downthrust Approx 4°

Soft Block

16 swg tube

1/8" sheet doublers

16 swg tube

16 swg u/c legs

6" track

1.1/2" dia wheels

1/8" sheet

1/8" sq lower longeron. Sand down to former to accept 1/16" sheet

Note: These formers are shown inverted

1/16" sheet top

Bottom covering 1/16" sheet.

Fuselage sides 2 off 1/16" sheet

W.1. 17 off 1/16" sheet

W.6. 2 off 1/16" sheet

1/32" sheet

3/16" x 3/8"

1/8" sheet laminations

3/16" x 3/8" Mainspar.

All ribs 1/16"

1/8" x 3/16" T.E.

Cover Centre Section with 1/32" sheet, Top & Bottom, to this rib.

Build up Centre Section from 1/8" sheet

18 s.w.g. Tailskid

1/8" dia dowel

Soft metal hinges

1/8" x 1/4"

1/8" sq

1/8" sq L.E.

1/16" sheet Ribs Sand to Symetrical Section

1/8" sheet outline

Front cabane strut 16 swg

Cover Centre Section with 1/32" sheet top and bottom to this rib

Rear Cabane Strut 16 swg

4 off 1/16" ply brace

1/8" x 3/16" T.E.

Dihedral angle 14° degrees both wings

W.2. 4 off 1/16" Sheet

W.3. 4 off 1/16" sheet

W.4. 4 off 1/16" sheet

Top Wing

Bottom Wing

4 off 1/16" ply brace

1/8" sheet

1/16" sheet Tip

Front Wing

1/16" sheet Tips

1/8" sq L.E.

1/8" sheet

W.3.

W.1.

W.2.

W.1.

W.1.

W.1.

3/16" x 3/8" main spar

1/8" sq

W.4.

W.3.

W.1.

1/8" sq L.E.

W.2.

W.1.

W.1.

3/16" x 3/8" main spar

1/8" sq

W.4.

W.3.

W.1.

1/8" sq L.E.

W.2.

W.1.

W.1.

3/16" x 3/8" main spar

1/8" sq

W.4.

W.3.

W.1.

1/8" sq L.E.

W.2.

W.1.

W.1.

3/16" x 3/8" main spar

1/8" sq

W.4.

W.3.

W.1.

1/8" sq L.E.

W.2.

W.1.

W.1.

3/16" x 3/8" main spar

1/8" sq

W.4.

W.3.

W.1.

1/8" sq L.E.

W.2.

W.1.

W.1.

3/16" x 3/8" main spar

1/8" sq

W.4.

W.3.

W.1.

1/8" sq L.E.

W.2.

W.1.

W.1.

3/16" x 3/8" main spar

1/8" sq

W.4.

W.3.

W.1.

1/8" sq L.E.

W.2.

W.1.

W.1.

3/16" x 3/8" main spar

1/8" sq

W.4.

W.3.

W.1.

1/8" sq L.E.

W.2.

W.1.

W.1.

3/16" x 3/8" main spar

1/8" sq

W.4.

W.3.

W.1.

1/8" sq L.E.

W.2.

W.1.

W.1.

3/16" x 3/8" main spar

1/8" sq

W.4.

W.3.

W.1.

1/8" sq L.E.

W.2.

W.1.

W.1.

3/16" x 3/8" main spar

1/8" sq

W.4.

W.3.

W.1.

1/8" sq L.E.

W.2.

W.1.

W.1.

3/16" x 3/8" main spar

1/8" sq

W.4.

W.3.

W.1.

1/8" sq L.E.

W.2.

W.1.

W.1.

3/16" x 3/8" main spar

1/8" sq

W.4.

W.3.

W.1.

1/8" sq L.E.

W.2.

W.1.

W.1.

3/16" x 3/8" main spar

1/8" sq

W.4.

W.3.

W.1.

1/8" sq L.E.

W.2.

W.1.

W.1.

3/16" x 3/8" main spar

1/8" sq

W.4.

W.3.

W.1.

1/8" sq L.E.

W.2.

W.1.

W.1.

3/16" x 3/8" main spar

1/8" sq

W.4.

W.3.

W.1.

1/8" sq L.E.

W.2.

W.1.

W.1.

3/16" x 3/8" main spar

1/8" sq

W.4.

W.3.

W.1.

1/8" sq L.E.

W.2.

W.1.

W.1.

3/16" x 3/8" main spar

1/8" sq

W.4.

W.3.

W.1.

1/8" sq L.E.

W.2.

W.1.

W.1.

3/16" x 3/8" main spar

1/8" sq

W.4.

W.3.

W.1.

1/8" sq L.E.

W.2.

W.1.

W.1.

3/16" x 3/8" main spar

1/8" sq

W.4.

W.3.

W.1.

1/8" sq L.E.

W.2.

W.1.

W.1.

3/16" x 3/8" main spar

1/8" sq

W.4.

W.3.

W.1.

1/8" sq L.E.

W.2.

W.1.

W.1.

3/16" x 3/8" main spar

1/8" sq

W.4.

W.3.

W.1.

1/8" sq L.E.

W.2.

W.1.

W.1.

3/16" x 3/8" main spar

1/8" sq

W.4.

W.3.

W.1.

1/8" sq L.E.

W.2.

W.1.

W.1.

3/16" x 3/8" main spar

1/8" sq

W.4.

W.3.

W.1.

1/8" sq L.E.

W.2.

W.1.

W.1.

3/16" x 3/8" main spar

1/8" sq

W.4.

W.3.

W.1.

1/8" sq L.E.

W.2.

W.1.

W.1.

3/16" x 3/8" main spar

1/8" sq

W.4.

W.3.

W.1.

1/8" sq L.E.

W.2.

W.1.

W.1.

3/16" x 3/8" main spar

1/8" sq

W.4.

W.3.