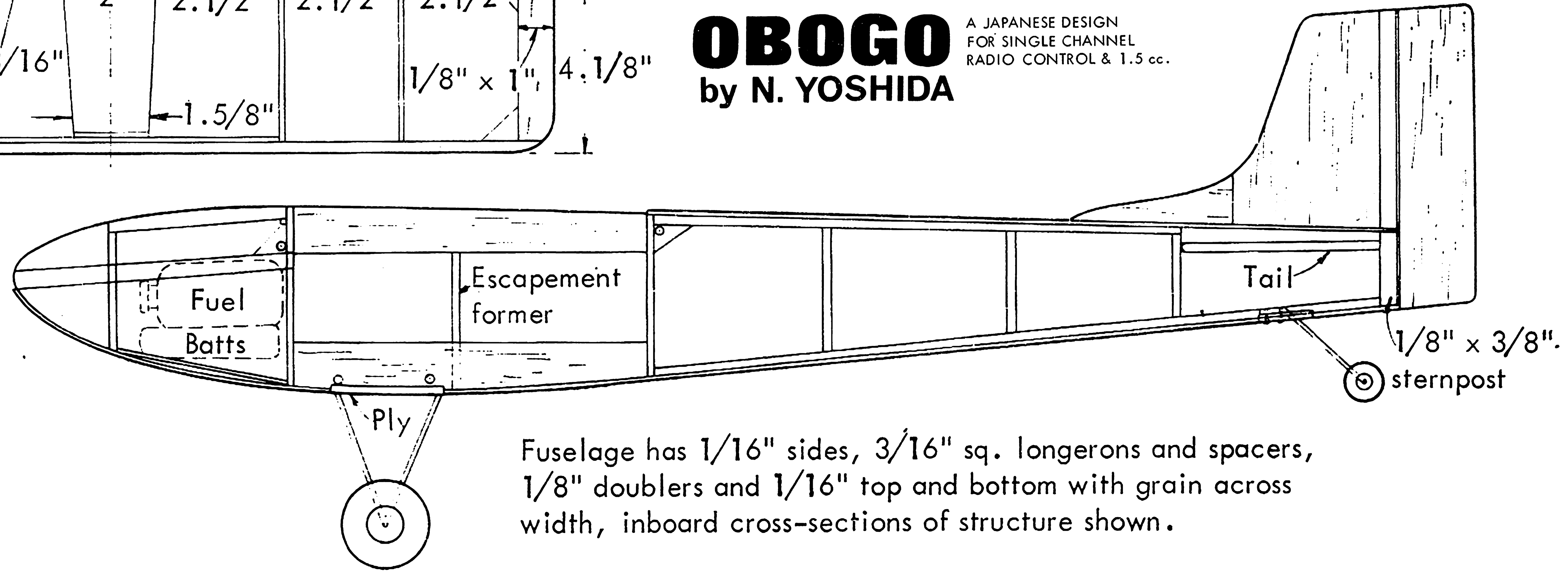


OBOGO
by N. YOSHIDA

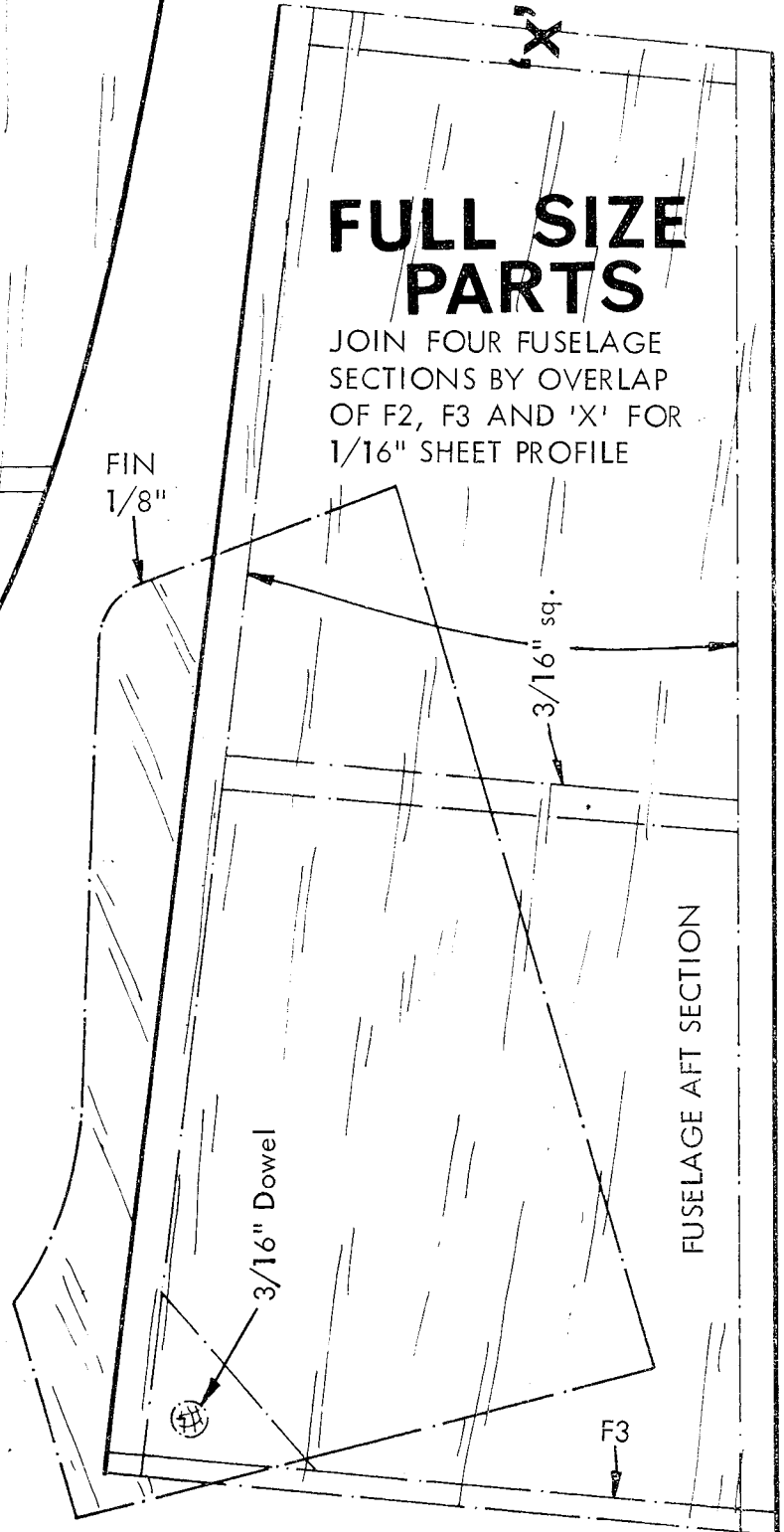
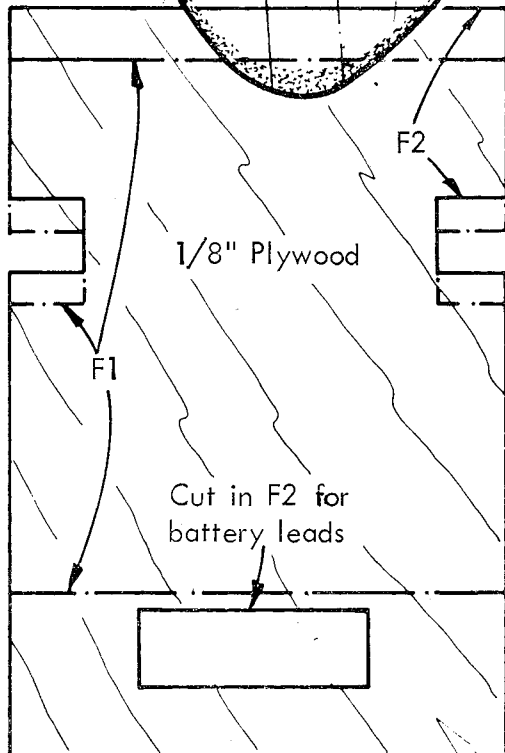
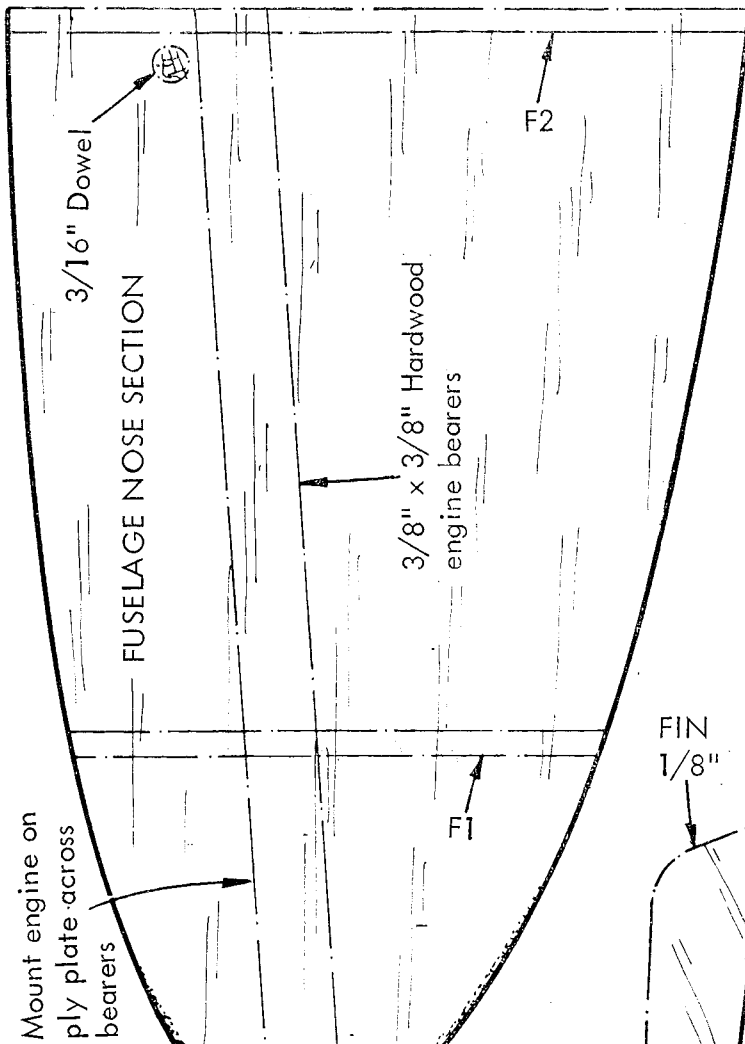
A JAPANESE DESIGN
FOR SINGLE CHANNEL
RADIO CONTROL & 1.5 cc.

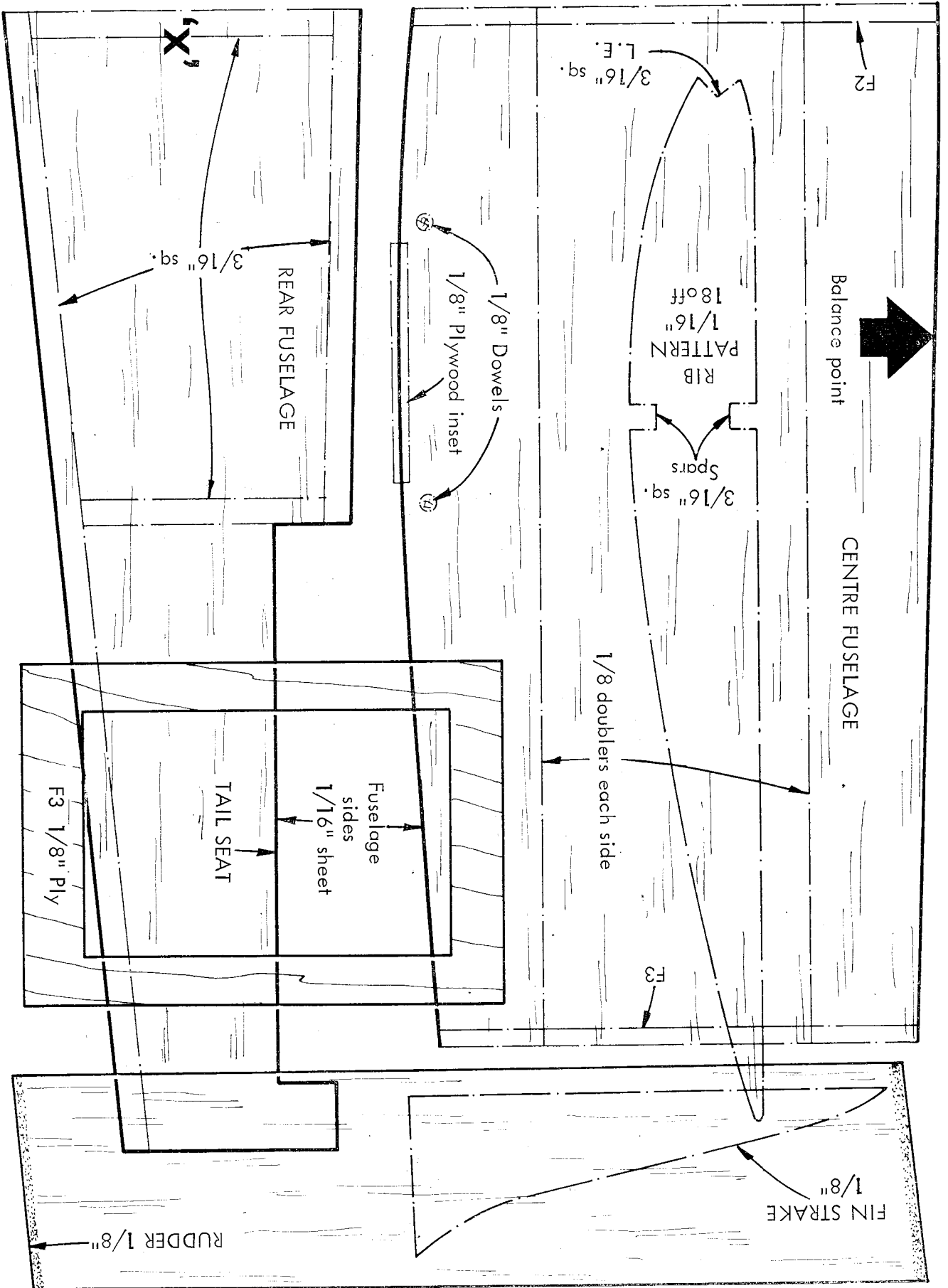


Fuselage has 1/16" sides, 3/16" sq. longerons and spacers, 1/8" doublers and 1/16" top and bottom with grain across width, inboard cross-sections of structure shown.

OBOGO

SINGLE CHANNEL R/C SPORTS
DESIGN FOR 1.5 cc. ENGINES
BY N. YOSHIDA (JAPAN)





Balance point

CENTRE FUSELAGE

REAR FUSELAGE

TAIL SEAT

Fuselage sides
1/16" sheet

F3 1/8" Ply

FIN STRAKE
1/8"

RUDDER 1/8"

RIB
1/16"
18 off

3/16" sq.
Spars

3/16" sq.
L.E.

1/8" Dowels
1/8" Plywood inset

1/8 doublers each side

3/16" sq.

X

F2

F3