

PLATE I.

CUT 3 BLADES FROM HARDWOOD TO ABOVE SHAPE AND GLUE TOGETHER TO FORM PROPELLER. DRILL FOR SHAFT

SKETCH SHOWING WINDSCREEN.

COVER FUSELAGE FROM 'F1' TO 'F4' WITH 1/32 AFTER GLUING CENTRE-SECTION IN POSITION. SEE INSTRUCTIONS.

SKETCH OF AIR INTAKE. CARVE FROM BLOCK Balsa.

1" DIA. HARDWOOD WHEELS.

RIBS 'D' & 'E' PAPER.

FRONT VIEW OF UNDER-CARRIAGE LEG. USE 20 S.W.G. WIRE, BIND & SOLDER AS SHOWN.

CUP WASHERS.

SKETCH SHOWING NOSE PLUG. BUILD UP FROM 'CUT OUT' OF 'C2' AND 3 PIECES OF 1/16 Balsa. USE BRASS TUBE FOR BEARING.

USE 1/16 SHEET & 1/8x1/16 Balsa FOR OUTLINES. RIBS ARE CUT FROM 1/8x1/32 Balsa.

SKETCH SHOWING TAILPLANE AND RUDDER CONSTRUCTION.

CUT OUTLINES FROM 1/16 SHEET & 1/8x1/16 SQ. Balsa. CUT RIBS FROM 1/8x1/32 Balsa.

GLUE 1/64 SHEET Balsa UNDER TAILPLANE TO FORM BASE & GLUE ONTO STRINGER.

TOP STRINGER 1/8x1/16 Balsa. SIDE & BOTTOM STRINGERS 1/16 SQ. Balsa.

CUT LOWER STRINGER ON EACH SIDE OF FUSELAGE TO FIT ONTO RIBS 'A' OF CENTRE SECTION. [SEE 'CHAIN-DOT' LINES ABOVE.]

GLUE 1/64 Balsa ONTO BOTTOM OF RUDDER AS SHOWN HERE.

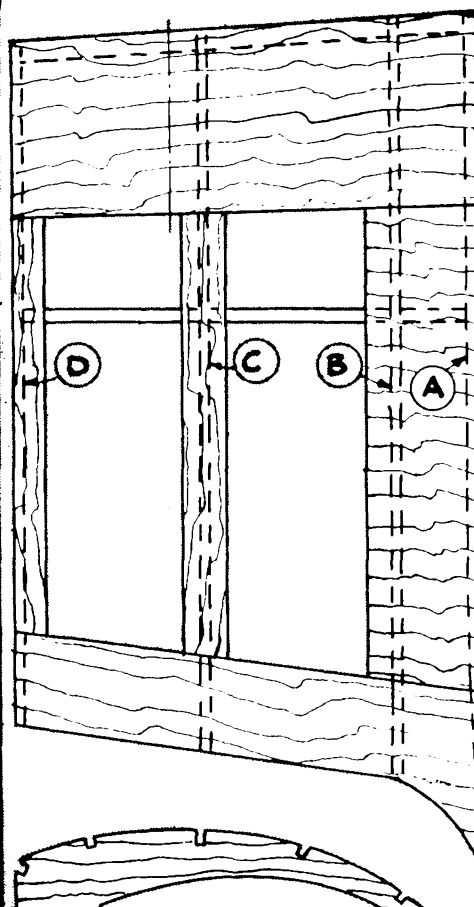
1/2" DIA. TAIL-WHEEL. BIND WIRE ONTO LOWER STRINGER.

CUT CENTRE-SECTION SPAR 'S' FROM 1/16 HARD SHEET Balsa.

CUT 2 KEEL MEMBERS 'K' FROM 1/16 HARD SHEET Balsa.

CUT ALL WING RIBS FROM 1/16 HARD SHEET Balsa.

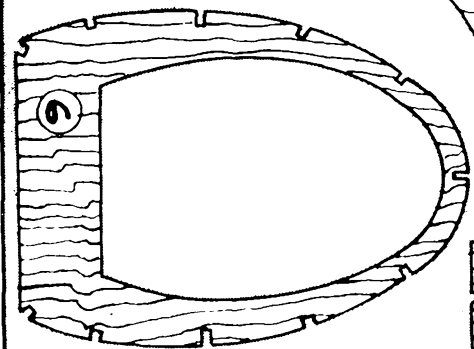
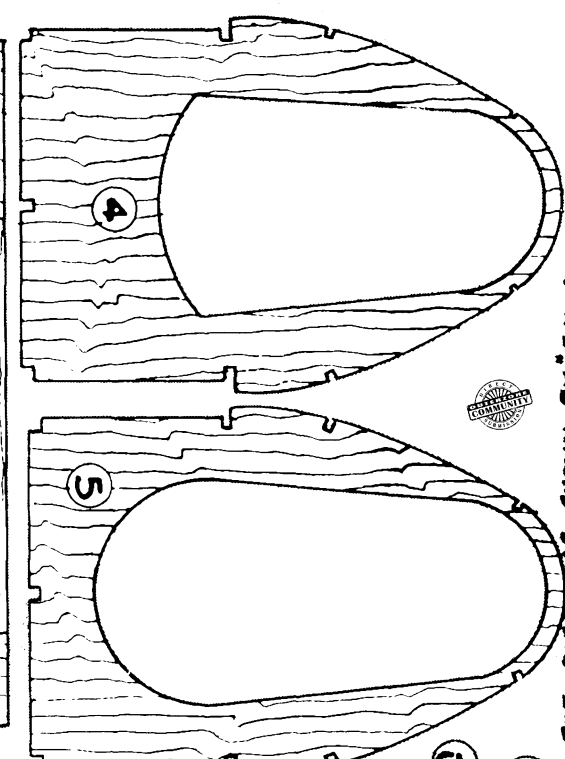
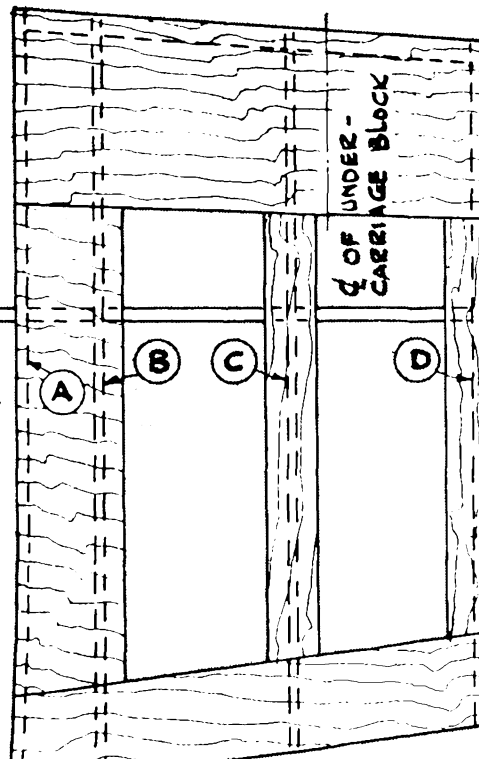
MILES "MASTER II" FLYING SCALE MODEL.



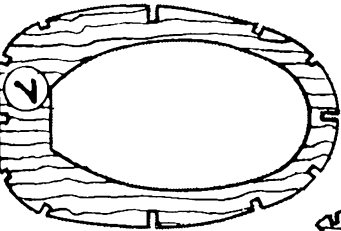
LEADING EDGES OF WING & CENTRE SECTION ARE CUT FROM 1/8 SQ Balsa. CUT TRAILING EDGES FROM 1/32 SHEET Balsa & GLUE ABOVE & BELOW WING RIBS. GLUE 1/32 SHEET Balsa ON TOP & BOTTOM SURFACES ON LEADING EDGES.

CAPPING STRIPS OF 1/32 SHEET Balsa ARE GLUED ONTO UPPER & LOWER SURFACES OF WING & CENTRE SECTION RIBS.

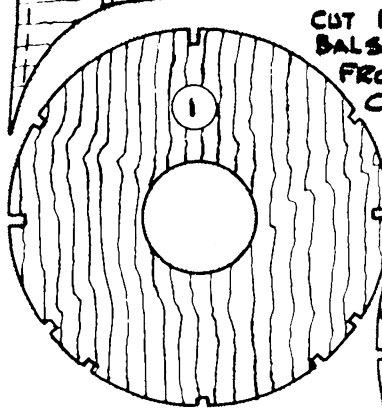
BUILD UP CONING AS SHOWN ON PLATE 1. USE 1/16 SHEET Balsa FOR ACTUAL CONE. GLUE ONTO 1/32 DISC & ONTO 1/32 SHEET COVERING ON FUSELAGE.



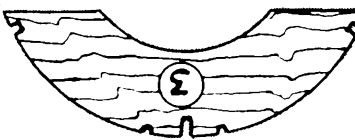
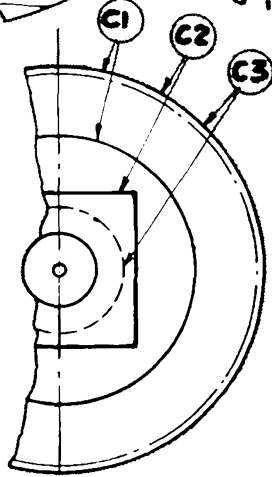
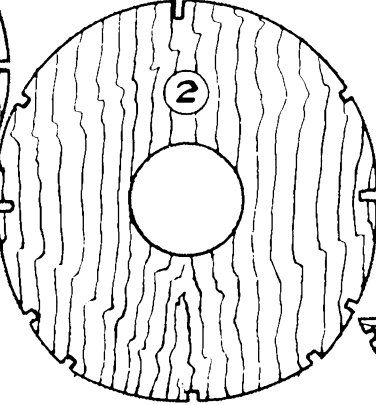
CUT 'R5' FROM 1/16 SHEET Balsa.



CUT 'TS' FROM 1/32 SHEET Balsa.



CUT F1 & F2 FROM 1/8 SHEET Balsa. CUT FORMERS F3 TO F8 FROM 1/16 SHEET Balsa. CUT C1, C2, C3 FROM 1/8 HARD SHEET Balsa.



CUT DISC AS SHOWN BY DASHING - DOT LINE & GLUE TO REAR OF 'C3' [USE 1/32 SHEET]

PLATE 2.