

CUT WINDOW SCREENS FROM CELLULOSE & GLUE IN PLACE.

HOOK 18 SWG. WIRE

COVER TOP, BOTTOM & SIDES OF FUSELAGE TO CURVED LINE WITH 1/32 SHEET BALSAS.

BRASS BUSH

GLUE LENGTH OF STRING ALONG EDGE OF BOTH COCKPITS

COVER WITH 1/32 SHEET BALSAS.

COVER FUSELAGE FROM TOP KEEL TO TOP 1/8 SQ STRINGERS FROM FORMER A TO FORMER E WITH 1/32 SHEET BALSAS.

MAKE EXHAUST PIPES FROM 3/32 ROUND CANN.

CUT ALL WING RIBS FROM 3/32 HARD SHEET BALSAS.

UNDERCARRIAGE DETAILS.
GLUE LEGS 'L' ONTO 3/32 PLYWOOD 'M' AND 1/8" FORWARD EDGE ONTO LEADING EDGE OF CENTRE-SECTION. GLUE PIECE OF 3/16 SQ. BALSAS TO REAR OF 'M' AND THEN GLUE SMALL PIECE OF 3/32 PLYWOOD ONTO SAME TO FORM 'HOOK'. ATTACH RUBBER BAND 'S' AS SHOWN. NOTE: UNDERCARRIAGE MAY BE GLOE UP IF DESIRED.

TOP & BOTTOM KEEL MEMBERS TO BE CUT FROM 1/8 HARD SHEET BALSAS.

1" SCALE MILES 'MAGISTER' - DESIGNED BY - RUSSELL W. DENNY

BUILD UP UNDERCARRIAGE LEG AND SPATS AS SHOWN ON PLATE 4.

WHEELS 1 1/2" DIAM.

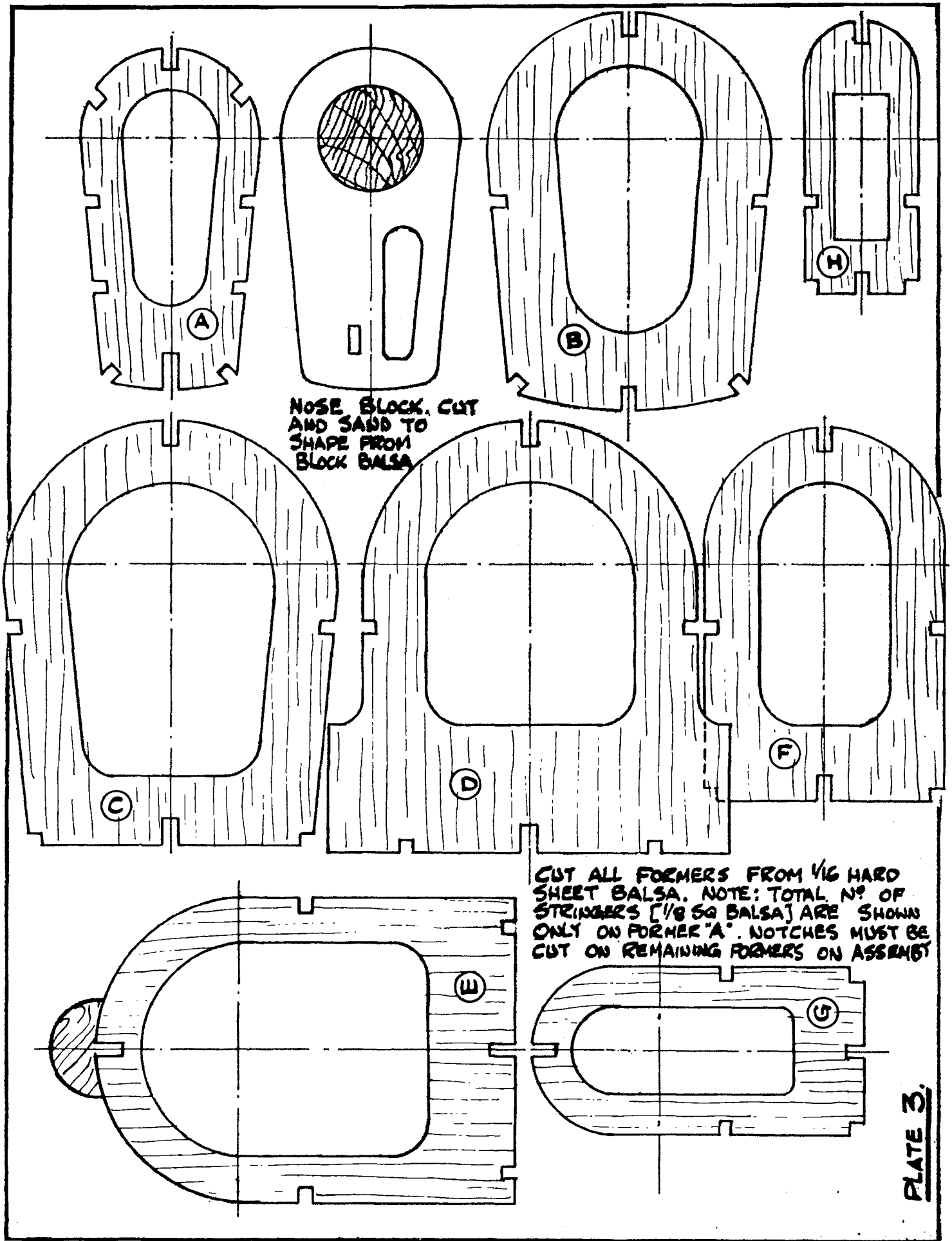
TAIL WHEEL 3/4" DIAM. BIND TAIL WHEEL FORWARD TO ROOBER SPAR AND FUSELAGE STERN-POST AS SHOWN HERE.

CUT PIECES 'RA' FROM 1/8 SHEET BALSAS AS GLOE AS SHOWN HERE.

NOTE: DRAWING MUST BE CUT AND JOINED AT FORMER 'F' FOR WORKING ARRANGMENT.

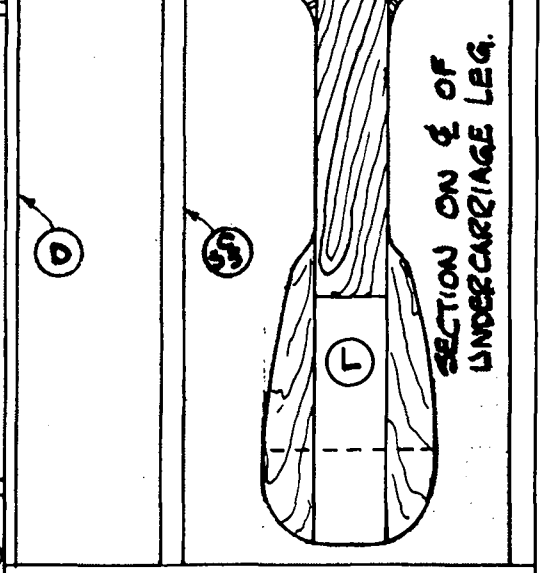
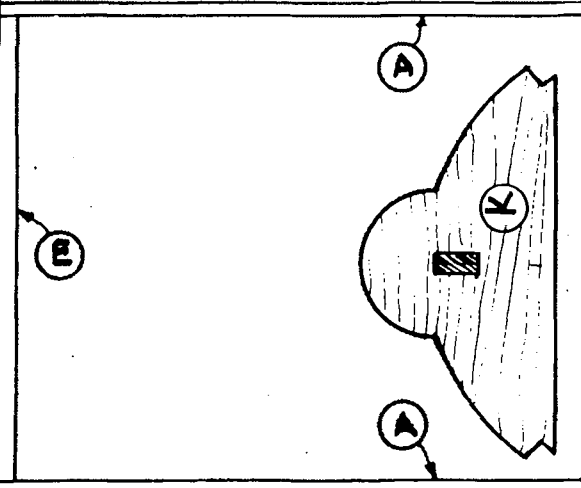
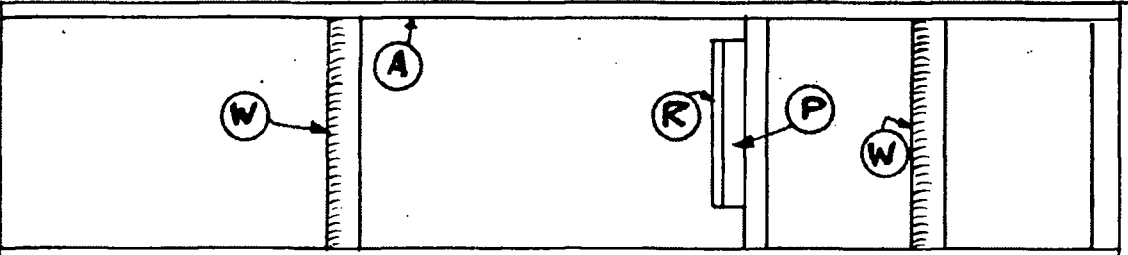
BUILD UP AS PER INSTRUCTIONS.

CUT SPAR FROM 1/8 HARD SHEET BALSAS.

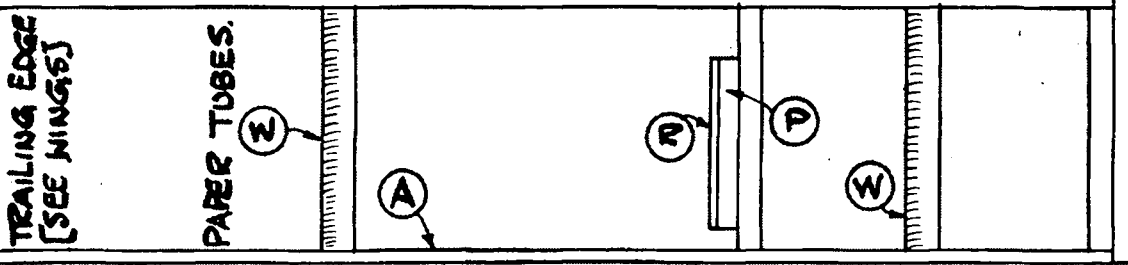


NOSE BLOCK. CUT AND SAND TO SHAPE FROM BLOCK BALSA

CUT ALL FORMERS FROM 1/16 HARD SHEET BALSA. NOTE: TOTAL N° OF STRINGERS [1/8 SQ BALSA] ARE SHOWN ONLY ON FORMER "A". NOTCHES MUST BE CUT ON REMAINING FORMERS ON ASSEMBY



RIBS 'A' ARE CUT ALONG DOTTED [SEE BELOW] AND GLOED ONTO FORMERS 'D' & 'E' AS SHOWN HERE. CENTRE-SECTION IS TO BE BOLTED ONTO THE FUSELAGE AS PER INSTRUCTIONS.



CUT RIBS 'A' [SEE ABOVE] AT DOTTED LINE.

RIBS 'A' & 'L' CUT FROM 3/32 HARD SHEET BALSA.

