

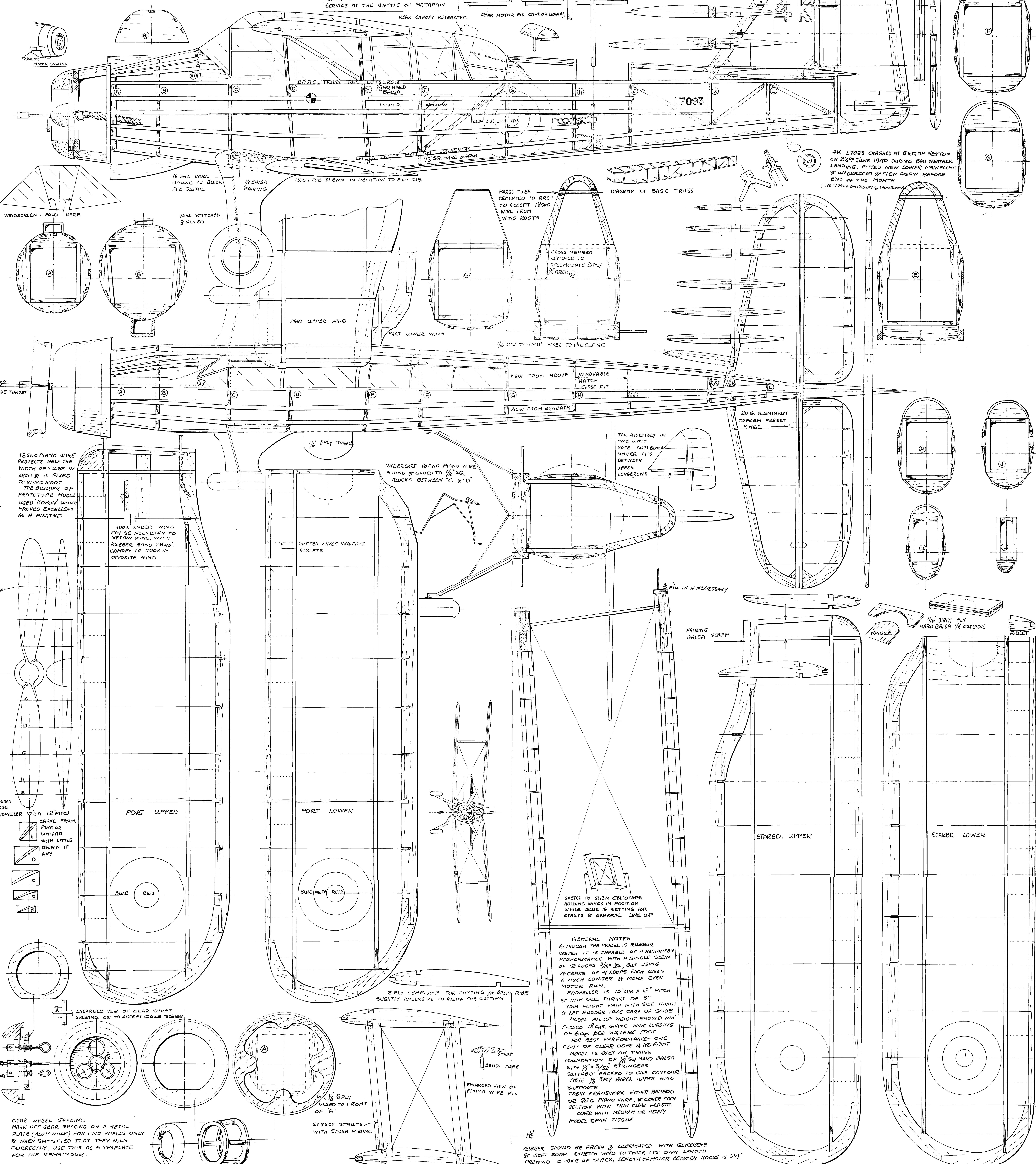
FAIREY ALBACORE

43 inch span Flying scale Model for RUBBER

with or without Gears Designed and Drawn by Harold J. Townes

ALBACORE SUCCESSOR TO THE SWORDFISH WAS A THREE SEAT TORPEDO-SPOTTER, RECCO AIRCRAFT FOR OPERATION FROM CARRIERS & LIGHT BOMBER FOR LAND NAVAL AIR STATIONS. ONE TAURUS II AIRCOOLED RADIAL SLAVE VALVE MOTOR, ONE BROWNING M.G. FORWARD & TWIN BROWNING'S ON MOVABLE MOUNTING IN REAR COCKPIT. WELL KNOWN FOR ITS SERVICE AT THE BATTLE OF MATAPAN

COLOR SCHEME: BATTLESHIP GREY. UPPER SURFACES. SEA GREEN CAMOUFLAGE. LOWER SURFACES DUCKEGG GREEN



AK. L7093 CRASHED AT BIRCHAM NEWTON ON 23RD JUNE 1940 DURING BAD WEATHER LANDING. FITTED NEW LOWER MAIN PLANE & UNDERCART SYSTEM AGAIN BEFORE END OF THE MONTH (SEE CHAPTER ON GROUPS & 1400 BOMBS)

18 SWG PIANO WIRE PROJECTS HALF THE WIDTH OF TUBE IN ARCH R IS GIMED TO WING ROOT THE BUILDER OF PROTOTYPE MODEL USED 'ISOPON' WHICH PROVED EXCELLENT AS A FIXATIVE

HOOK UNDER WING MAY BE NECESSARY TO RETAIN WING WITH RUBBER BAND THRO' CANOPY TO HOOK IN OPPOSITE WING

UNDERCART 16 SWG PIANO WIRE BOUND & GIMED TO 1/4" SQ. SLICKS BETWEEN 'C' & 'D'

TAIL ASSEMBLY IN ONE UNIT NOTE SOFT BLOCK UNDER FITS BETWEEN UPPER LONGERONS

SKETCH TO SHOW CELLOTAPE HOLDING WINGS IN POSITION WHILE GLUE IS SETTING FOR STRUTS & GENERAL LINE UP

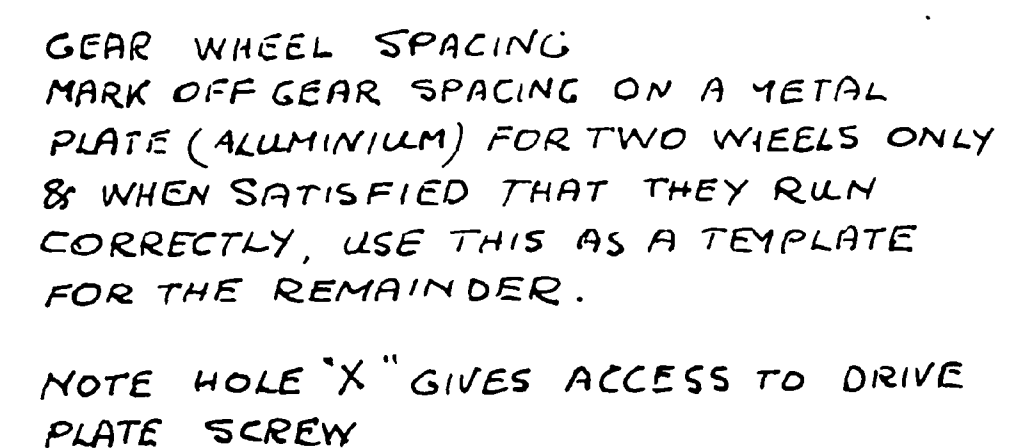
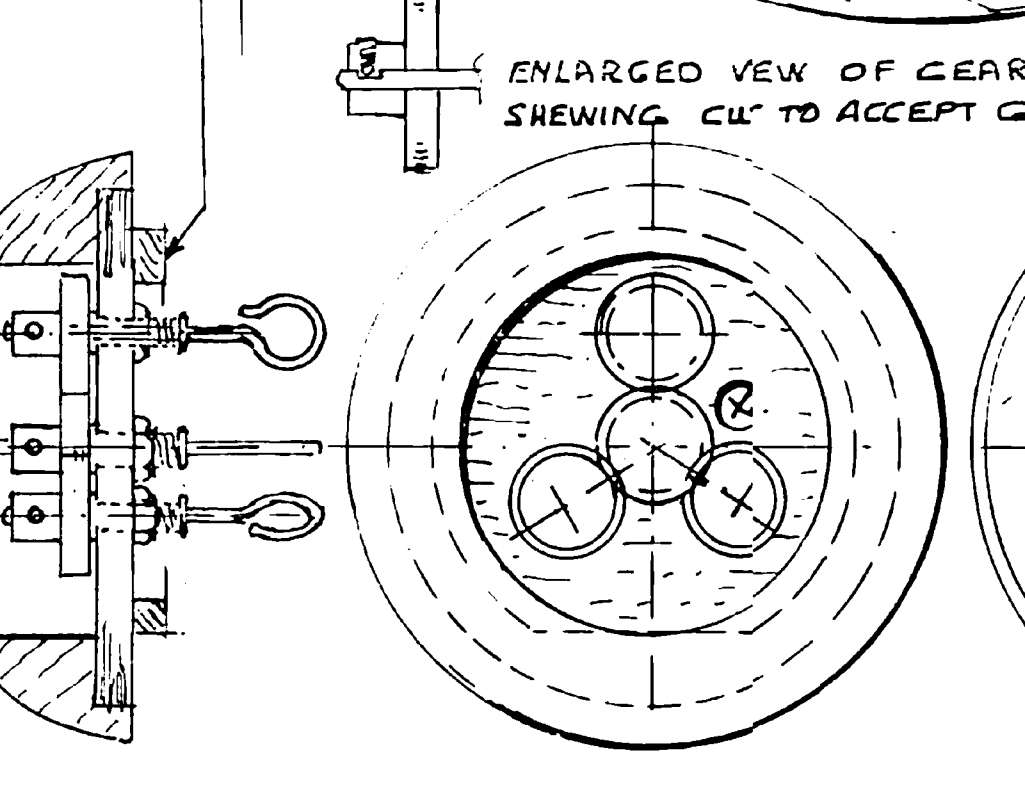
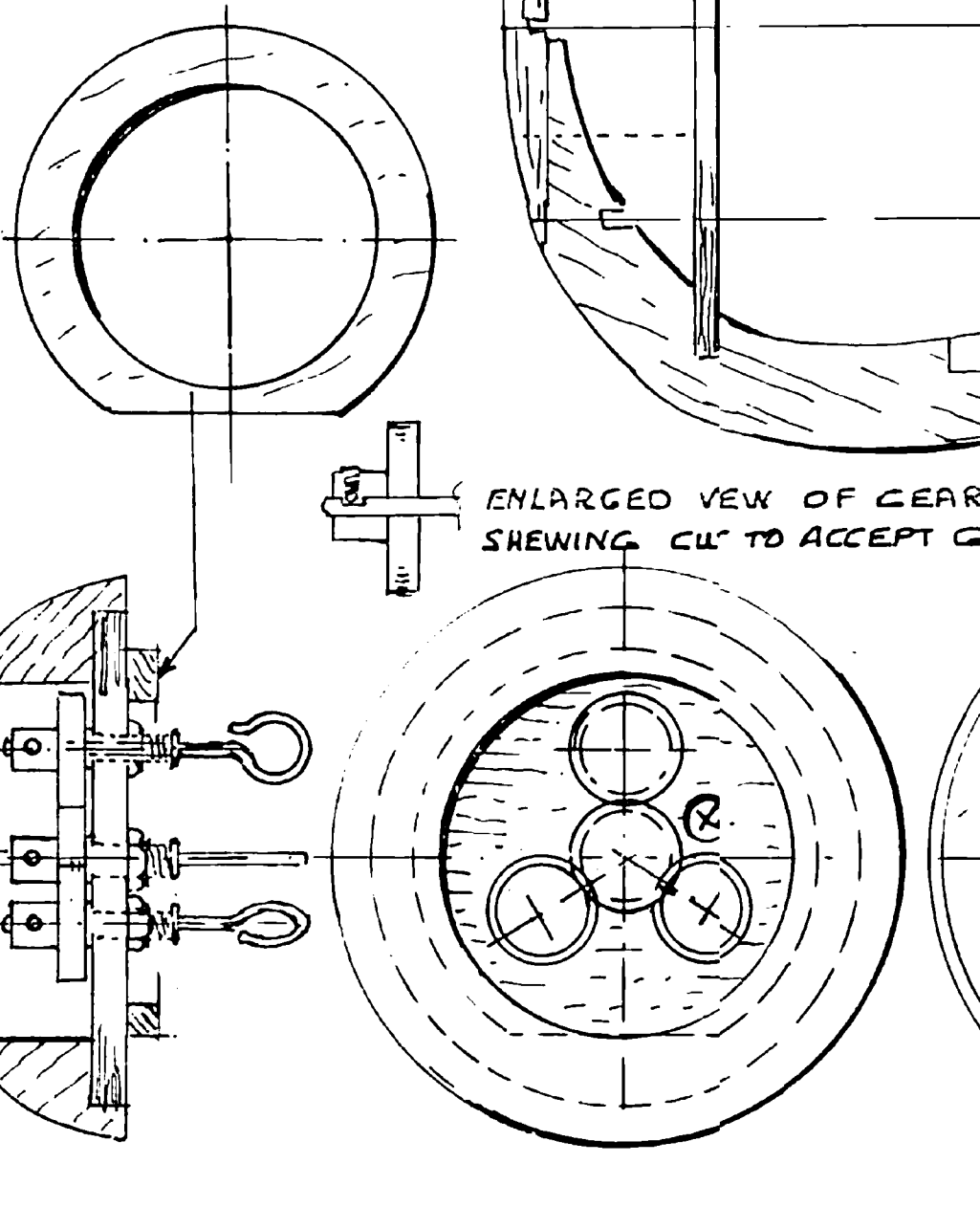
GENERAL NOTES
ALTHOUGH THE MODEL IS RUBBER DRIVEN IT IS CAPABLE OF A REASONABLE PERFORMANCE WITH A SINGLE SKELIN OF 12 LOOPS 3/16 X 3/32, BUT USING 4 GEARS OF 4 LOOPS EACH GIVES A MUCH LONGER & MORE EVEN MOTOR RUN.
PROPELLER IS 10" DIA X 12" PITCH 5/8" WITH SIDE THRUST OR 3/4" TRIM FLIGHT PATH WITH SIDE THRUST & LET RUDDER TAKE CARE OF GLIDE MODEL ALL UP WEIGHT SHOULD NOT EXCEED 18 GMS. GIVING WING LOADING OF 6 GMS PER SQUARE FOOT FOR BEST PERFORMANCE - ONE COAT OF CLEAR ODFE & NO PAINT
MODEL IS BUILT ON TRUSS FOUNDATION OF 1/8" SQ HARD Balsa WITH 1/8" X 3/32 STRINGERS SUITABLY PACKED TO GIVE CONTOUR
NOTE 1/8" 3PLY BIRCH UPPER WING SUPPORTS CABIN FRAMEWORK EITHER BAMBOO OR 25 G PIANO WIRE & COVER EACH SECTION WITH THIN CLEAR PLASTIC COVER WITH MEDIUM OR HEAVY MODEL SPAN TISSUE

RUBBER SHOULD BE FRESH & LUBRICATED WITH GLYCERINE & SOFT SOAP. STRETCH WIND TO TWICE ITS OWN LENGTH PREWIND TO TAKE UP SLACK. LENGTH OF MOTOR BETWEEN HOOKS IS 2 1/2"

MAXIMUM SAFE TURNS 1/8" X 1/2" 4 STRANDS - 50 TURNS PER INCH (4 MOTORS) - 3 MOTORS ONLY CAN BE USED TO GET REQUIRED RESULTS 12 STRANDS - 36 (SINGLE MOTOR) OR 10 STRANDS (LOOPS) GIVES 40 TURNS PER INCH. SAFE.

GEAR WHEEL SPACING MARK OFF GEAR SPACING ON A METAL PLATE (ALUMINIUM) FOR TWO WHEELS ONLY & WHEN SATISFIED THAT THEY RUN CORRECTLY, USE THIS AS A TEMPLATE FOR THE REMAINDER.
NOTE HOLE 'X' GIVES ACCESS TO DRIVE PLATE SCREW

LOADING EDGE PROPELLER 10" DIA 12" PITCH CARVE FROM PINE OR SIMILAR WITH LITTLE GRAIN IF ANY



NOTE HOLE 'X' GIVES ACCESS TO DRIVE PLATE SCREW