

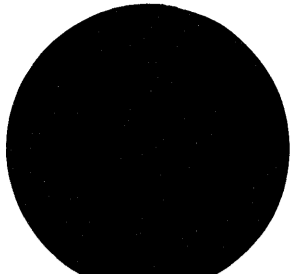
THE AMBASSADOR

DESIGNED BY

A. HEWITT

COPYRIGHT OF

THE AEROMODELLER PLANS SERVICE

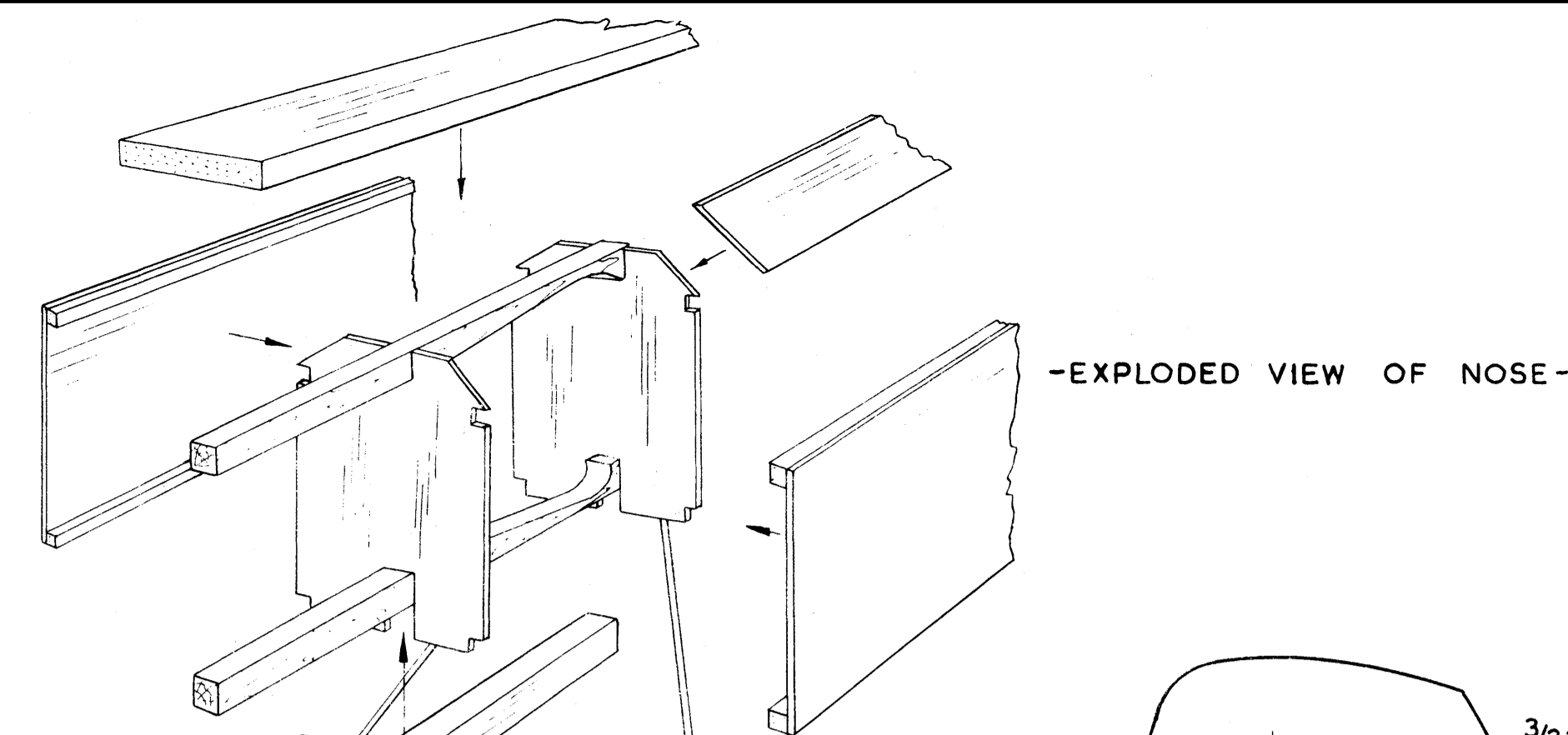


TECHNICAL DATA.

SPAN 35 1/2"
 AREA 248 SQ. IN.
 TAILPLANE SPAN 13"
 " AREA 16 SQ. IN.
 ELEVATOR " 19 " "
 LENGTH 23 3/8"
 WEIGHT 11 OZ.
 POWER 2.5 C.C.
 LINE LENGTH 52 1/2' - 60'
 C.G. POSITION - 1" BACK FROM L.E.

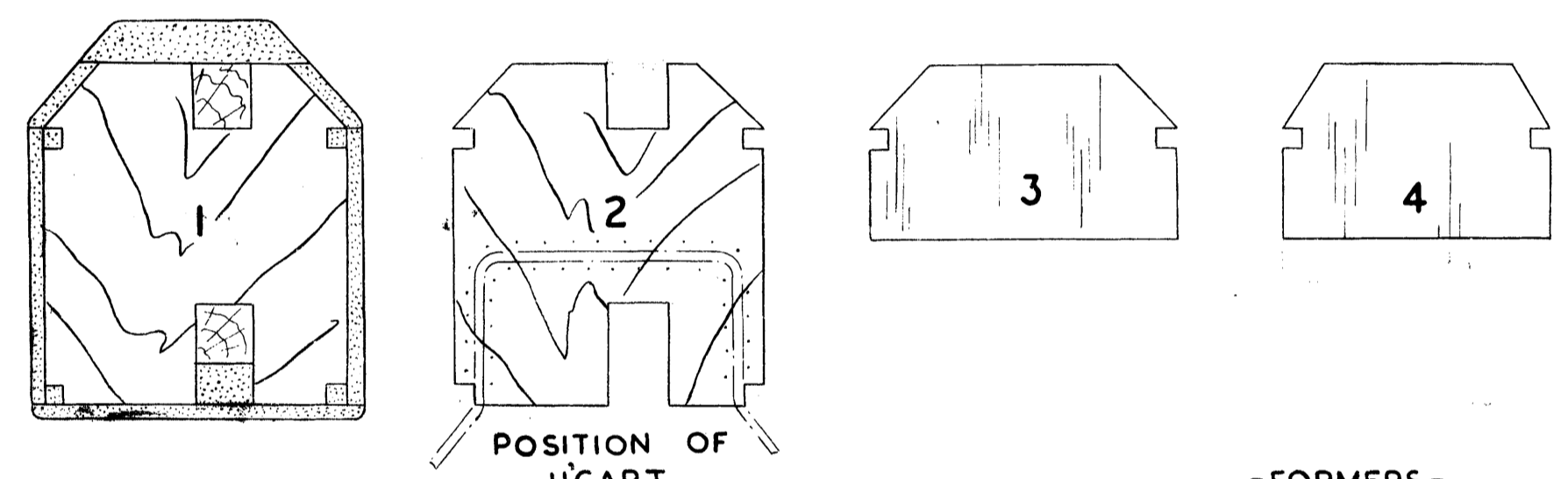
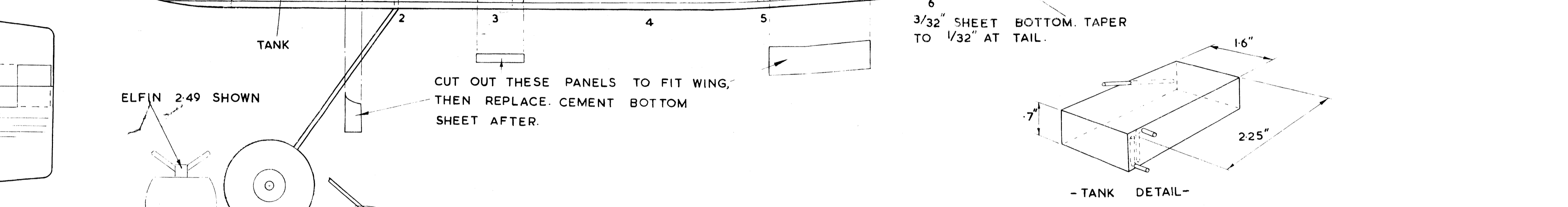
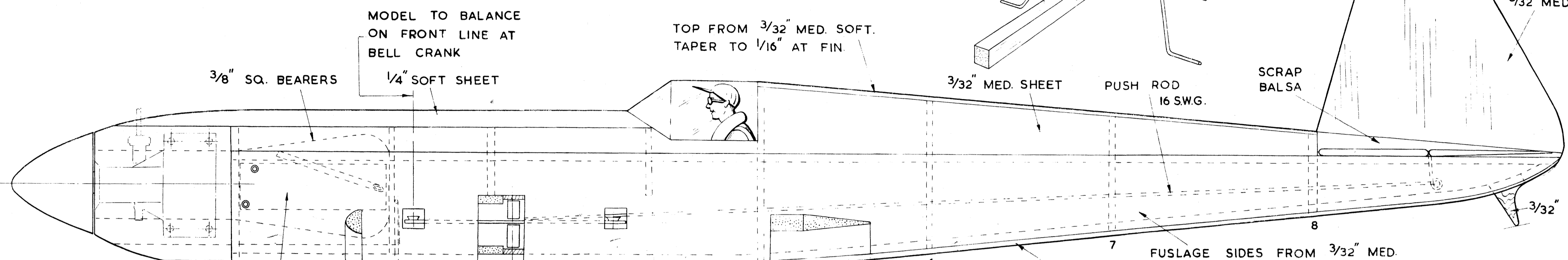
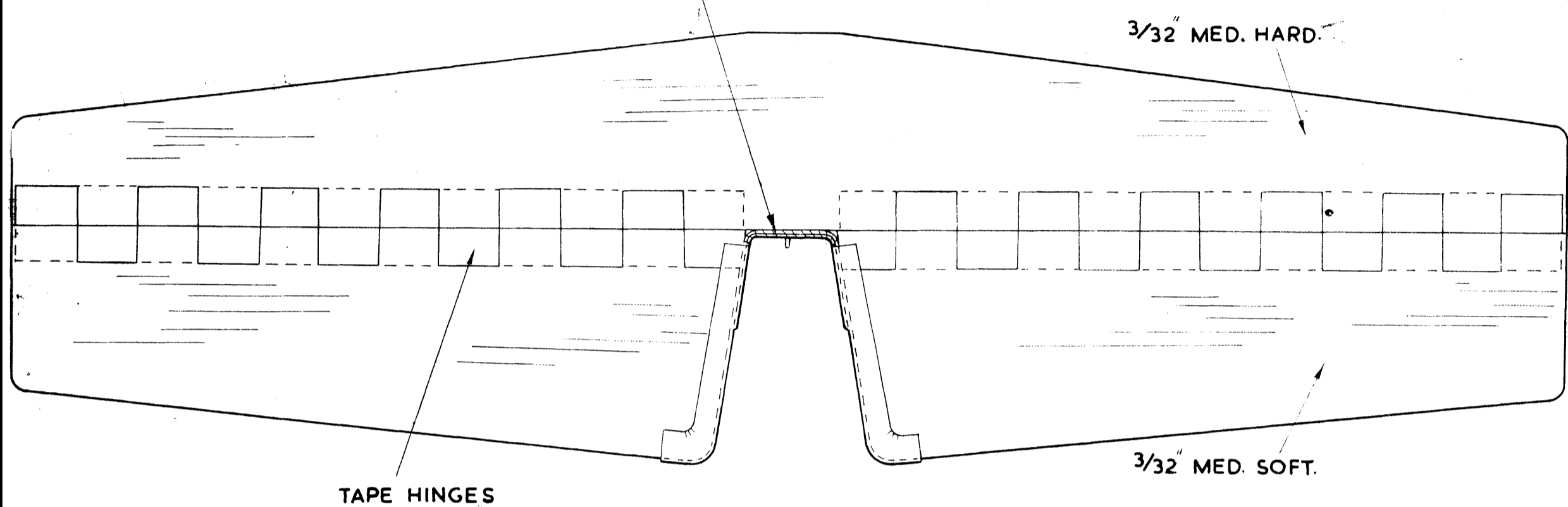
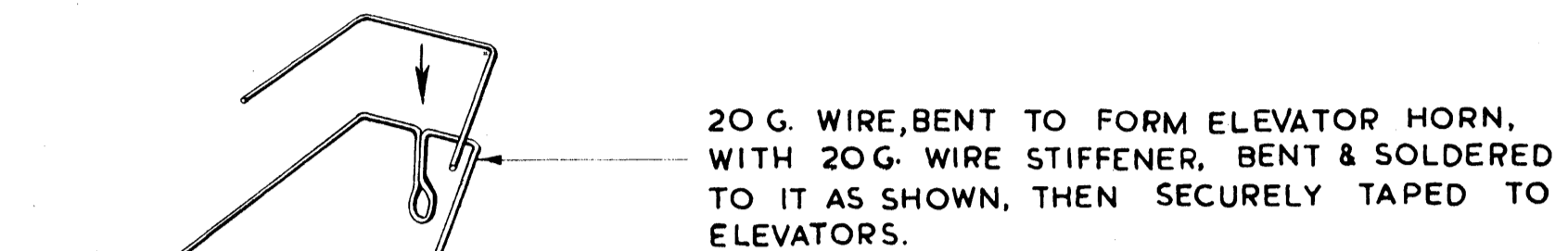
MATERIALS

BALSA.
 3 STRIPS OF 1/8" X 1/8" X 36" HARD.
 1 STRIP " 3/8" X 1/4" X 36" "
 1 SHEET " 3/32" X 3" X 36" MED. HARD.
 " " 3/32" X 3" X 36" " SOFT.
 " " 1/4" X 3" X 36" " "
 " " 1/16" X 3" X 36" " "
 " " 1/8" X 3" X 36" " HARD.
 1 BLOCK " 3/4" X 7/8" X 12 1/2" SOFT.
 MISCELLANEOUS.
 10" OF 3/8" X 3/8" HARDWOOD
 14" " 16 SWG. PIANO WIRE.
 10" " 20 " "
 SMALL PIECE OF 1/16" PLY.
 " " 1/8" "

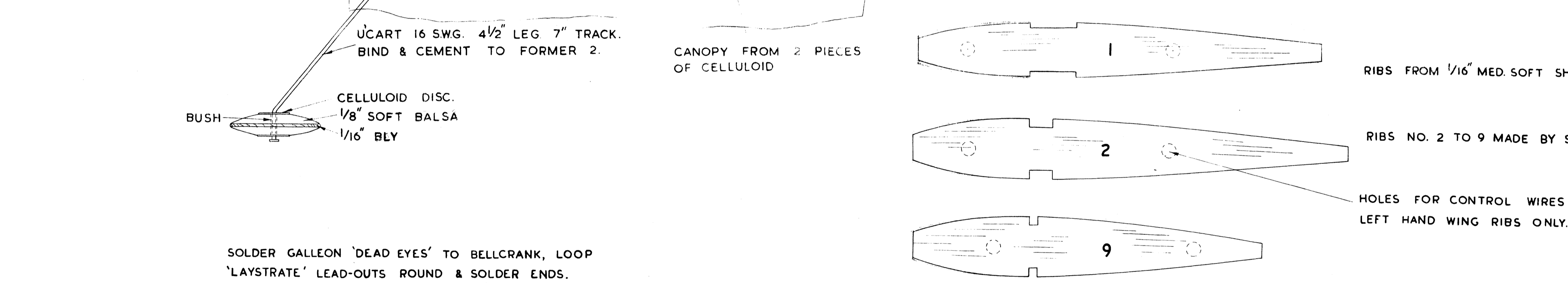
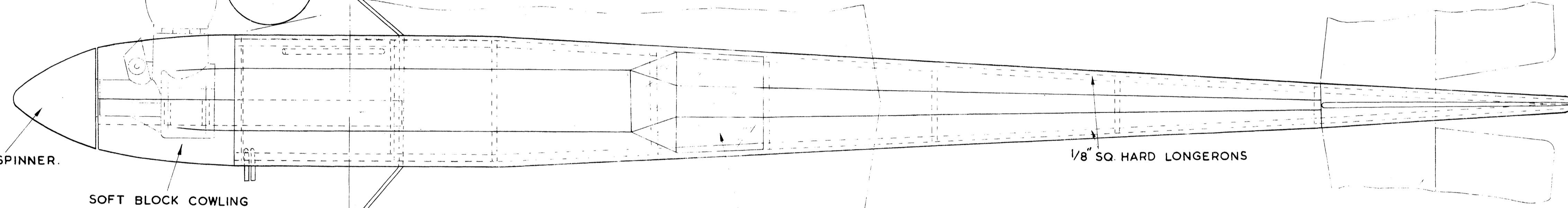
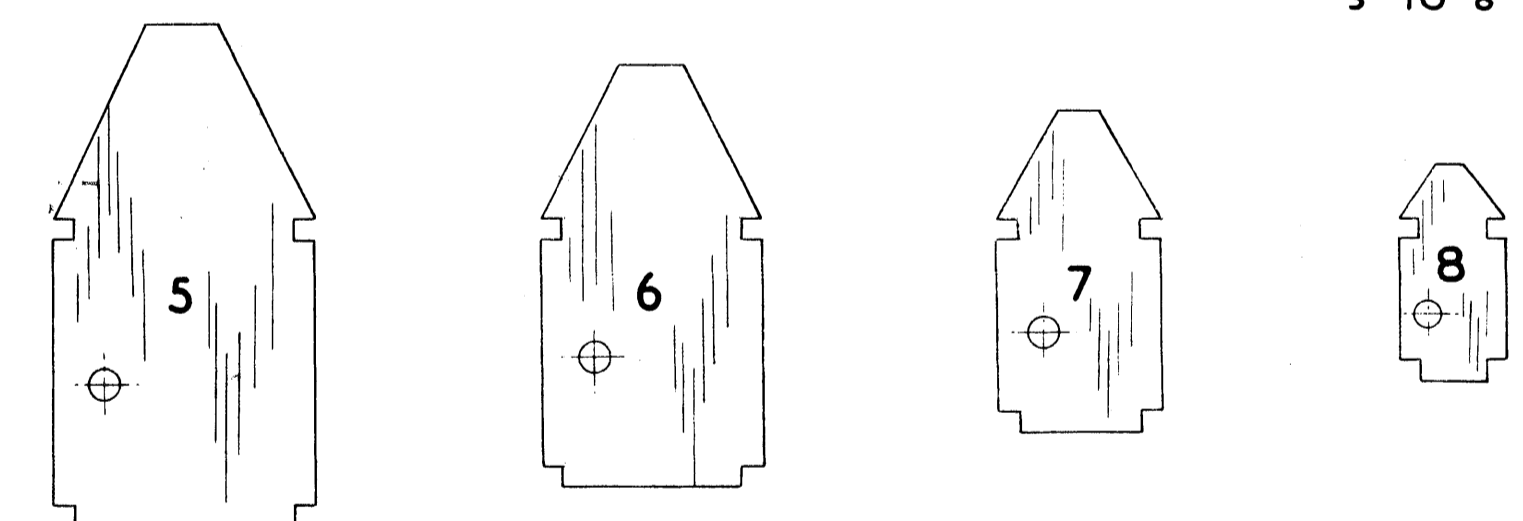


-CONTEST RECORD-

- 1ST. GOLD TROPHY. 1951.
- 1ST. STUNT & CONCOURS. KNOKKE-SUR-MER. 1951.
- 1ST. DEANSON CUP. WALSALL. 1951.



-FORMERS-
 NO'S 1 & 2 OF 1/8" PLY.
 3 TO 8 OF 1/8" BALSA.



SOLDER GALLEON 'DEAD EYES' TO BELLCRANK, LOOP 'LAYSTRATE' LEAD-OUTS ROUND & SOLDER ENDS.

