

# "A.V. 10"

DESIGNED BY

GUY BORGÉ.

COPYRIGHT OF

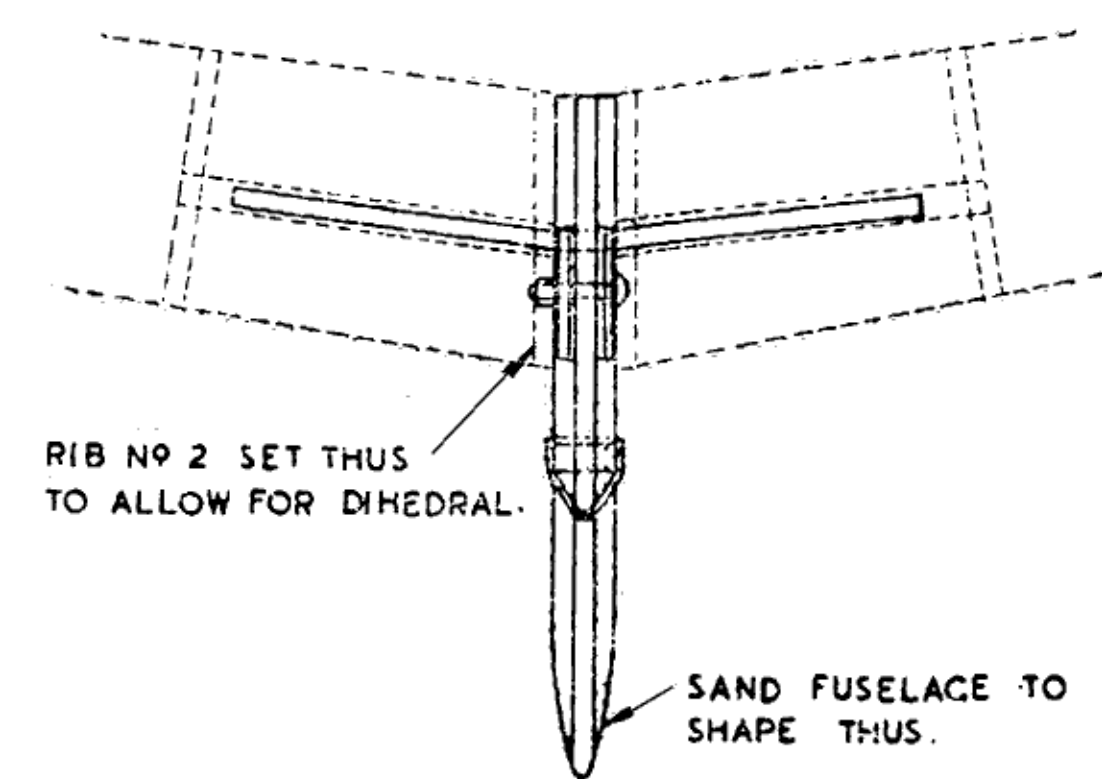
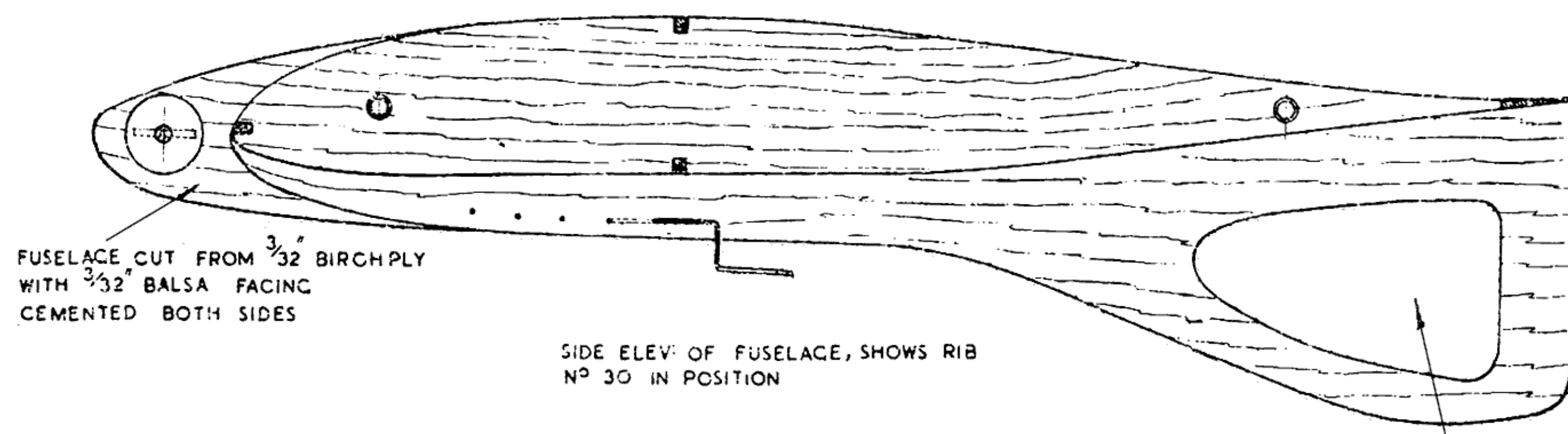
2/6

THE AEROMODELLER PLANS SERVICE LTD.

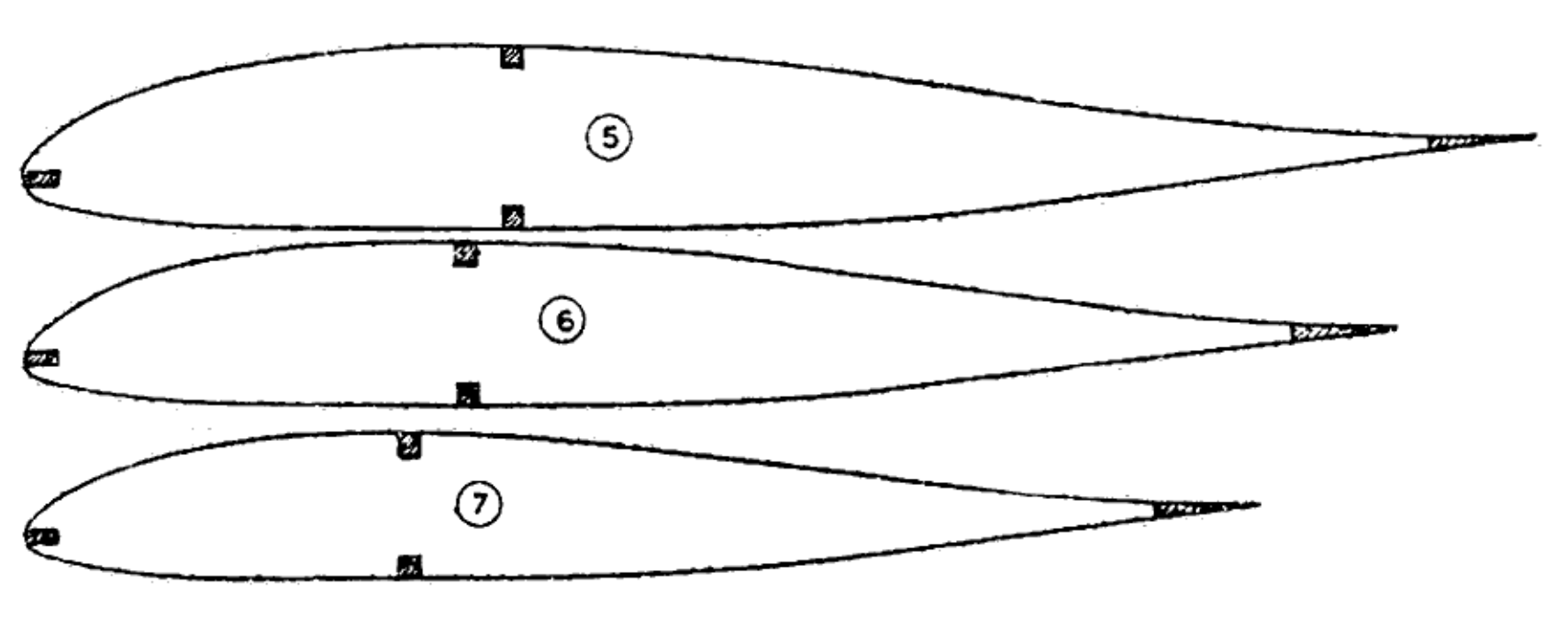
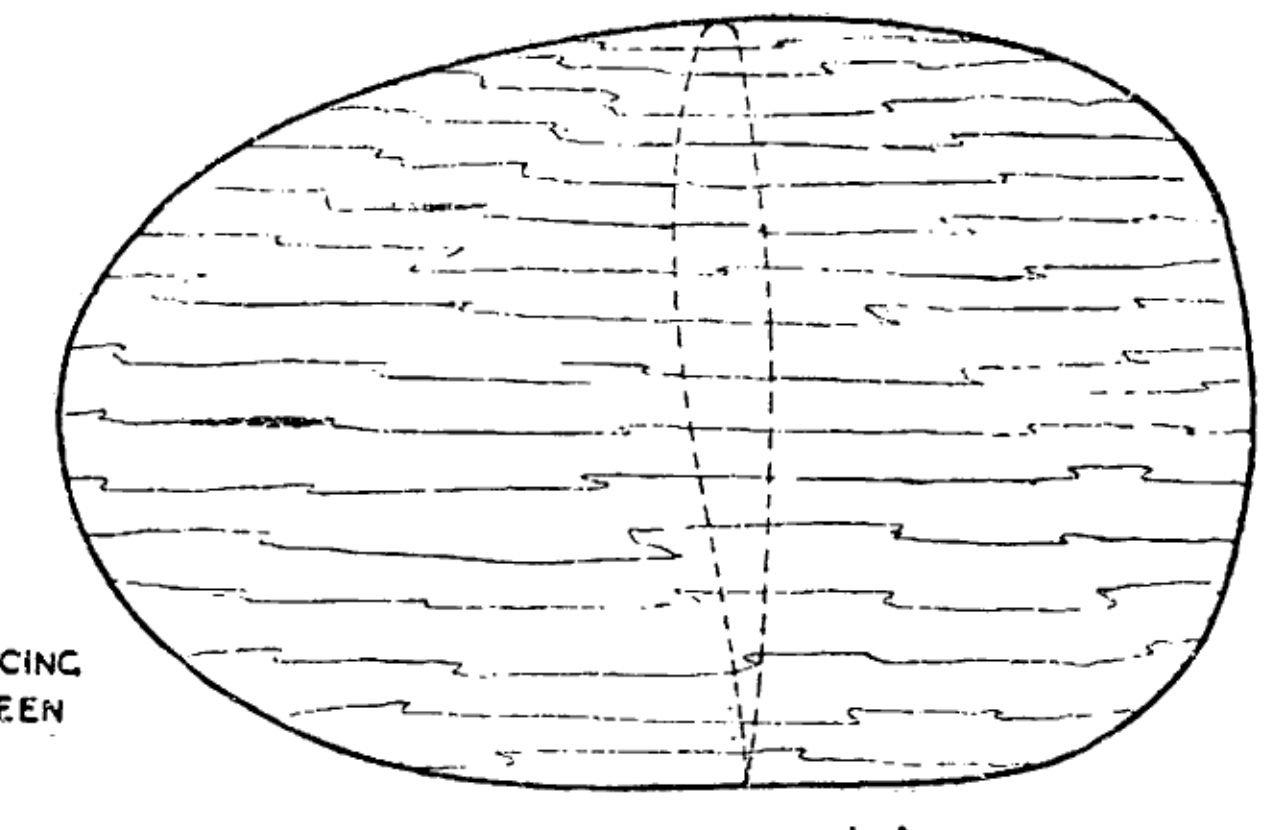
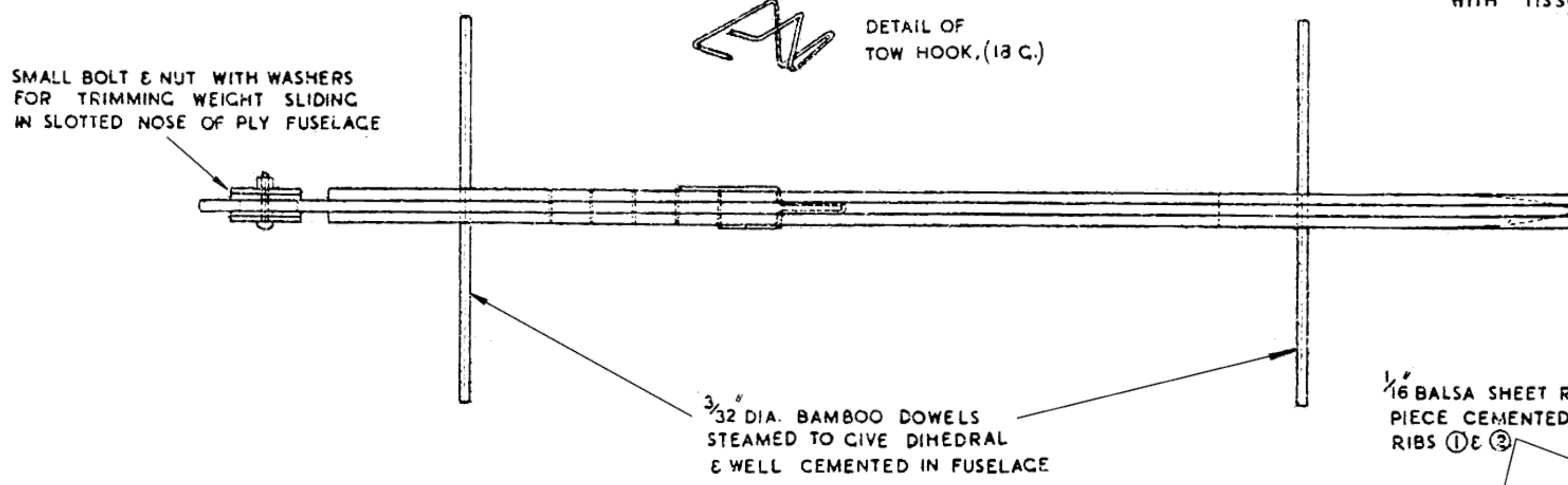
ALLEN HOUSE, NEWARKE STREET, LEICESTER.

## MATERIALS REQUIRED.

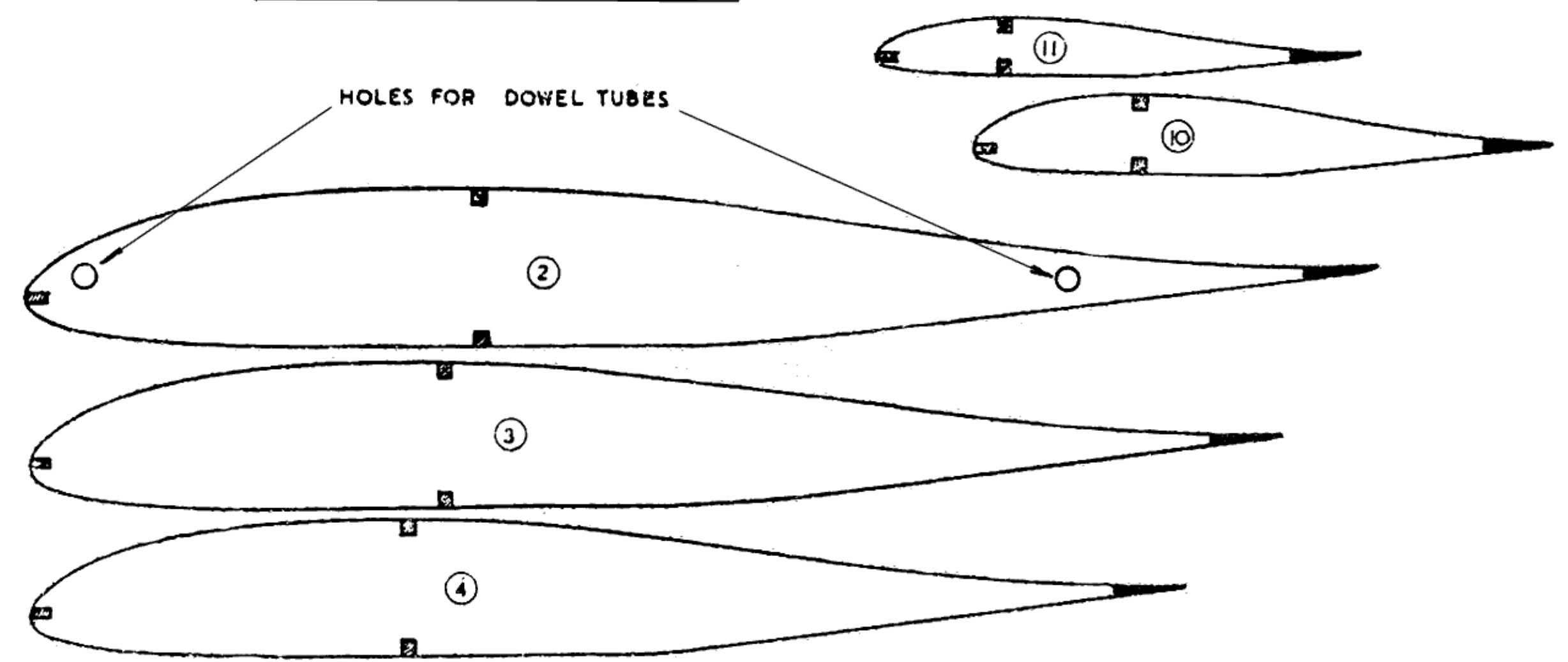
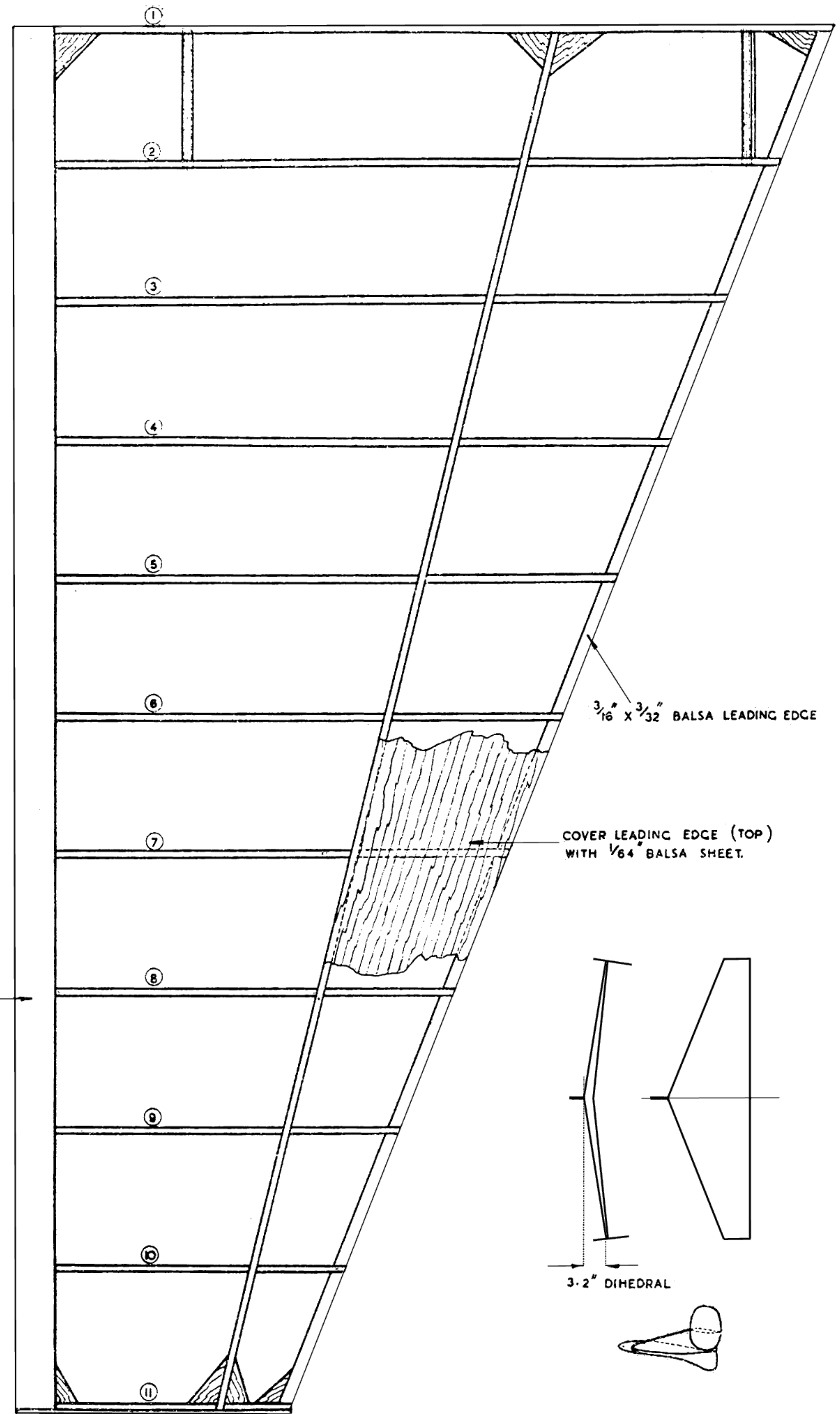
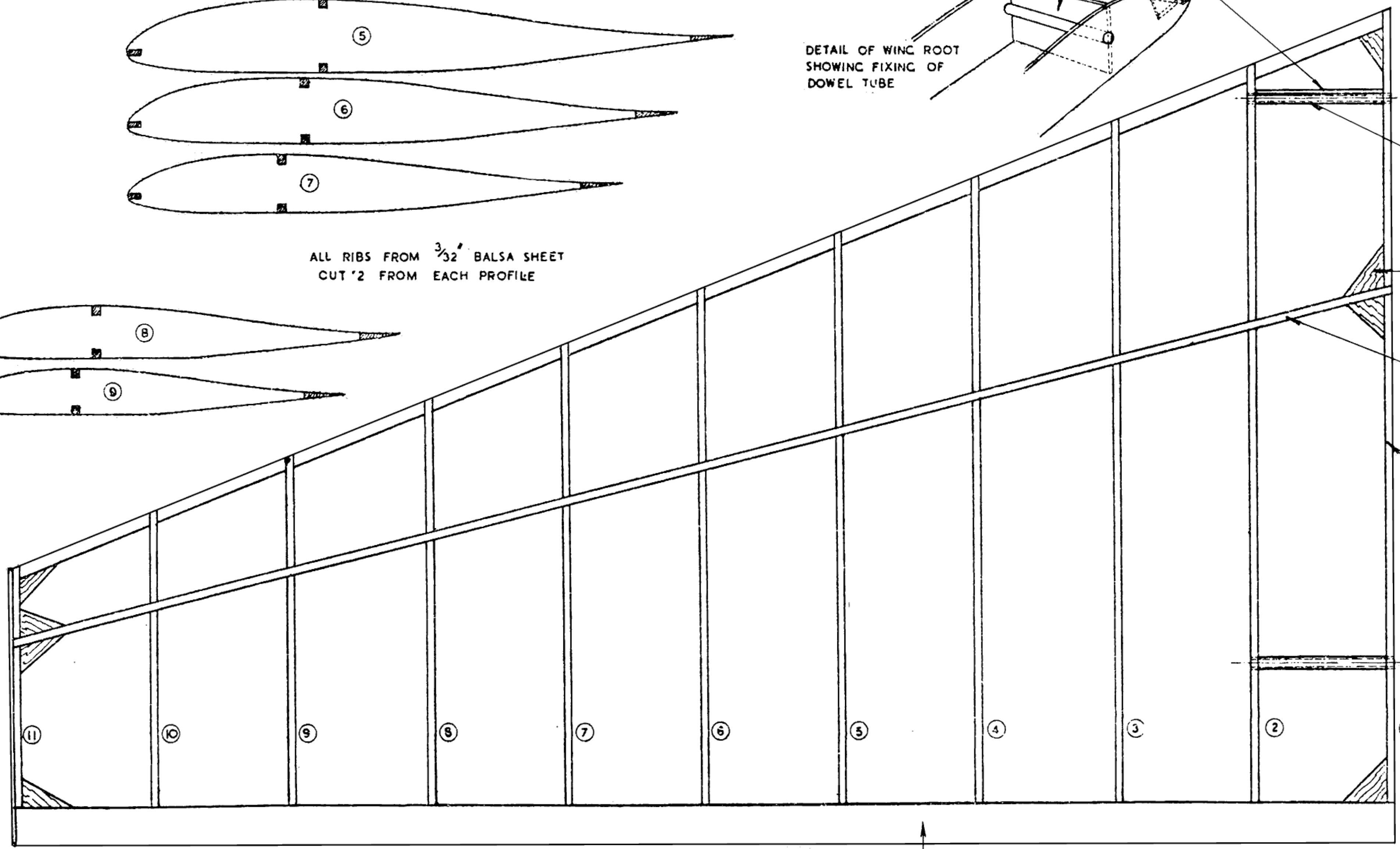
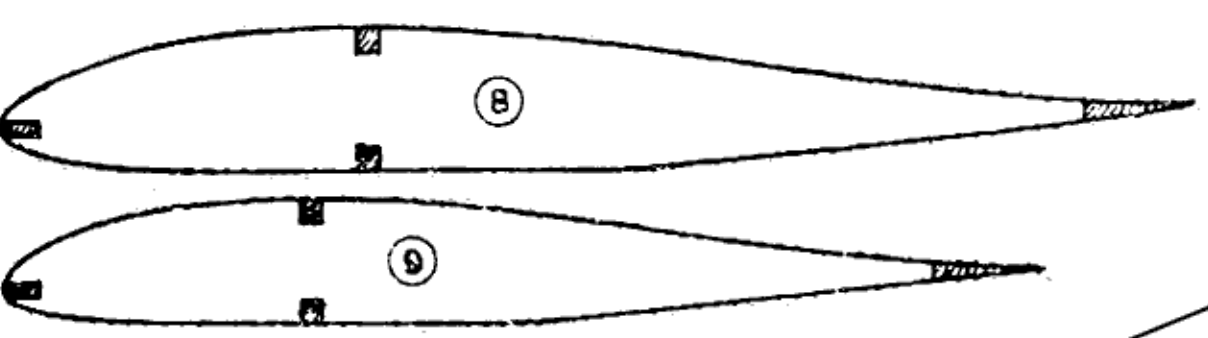
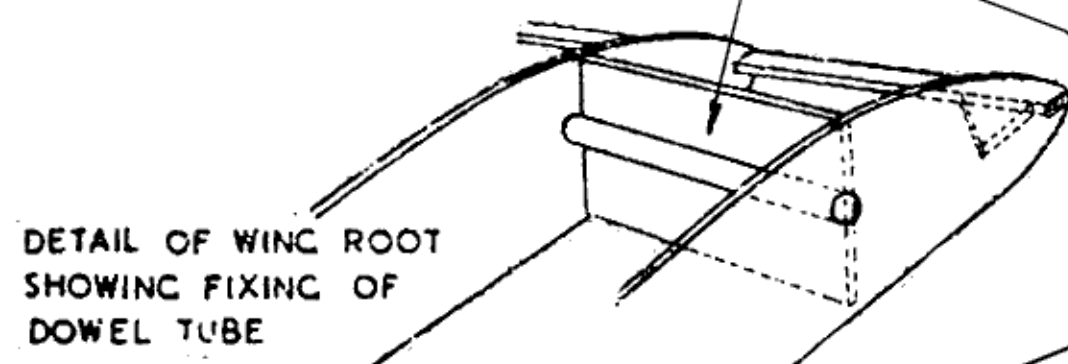
- |          |  |                      |
|----------|--|----------------------|
| 4 STRIPS | $\frac{1}{8} \times \frac{1}{8} \times 2'-0"$ Balsa.       | BAMBOO STRIP         |
| 2        | $\frac{3}{16} \times \frac{3}{32} \times 2'-0"$            | 6 OF 18C WIRE        |
| 2        | $\frac{9}{16} \times \frac{3}{32} \times 2'-0"$            | 3 SHEETS TISSUE.     |
| 2 SHEETS | $3' \times \frac{3}{32} \times 3'-0"$                      | 2 TUBES CEMENT.      |
| 2        | $4 \frac{1}{2} \times \frac{1}{4} \times 2'-0"$            | 1 TIN DOPE.          |
| 1        | $4 \frac{1}{2} \times \frac{1}{16} \times 1'-6"$           | BOLT, NUT & WASHERS. |
| 1 SHEET  | $3 \frac{1}{2} \times \frac{3}{32} \times 1'-3"$ BIRCHPLY. |                      |



COVER UNDERFIN CUT-OUT WITH TISSUE



ALL RIBS FROM  $\frac{3}{32}$ " Balsa SHEET CUT '2 FROM EACH PROFILE



$\frac{9}{16} \times \frac{3}{32}$  TRAILING EDGE SANDED TO SHAPE.