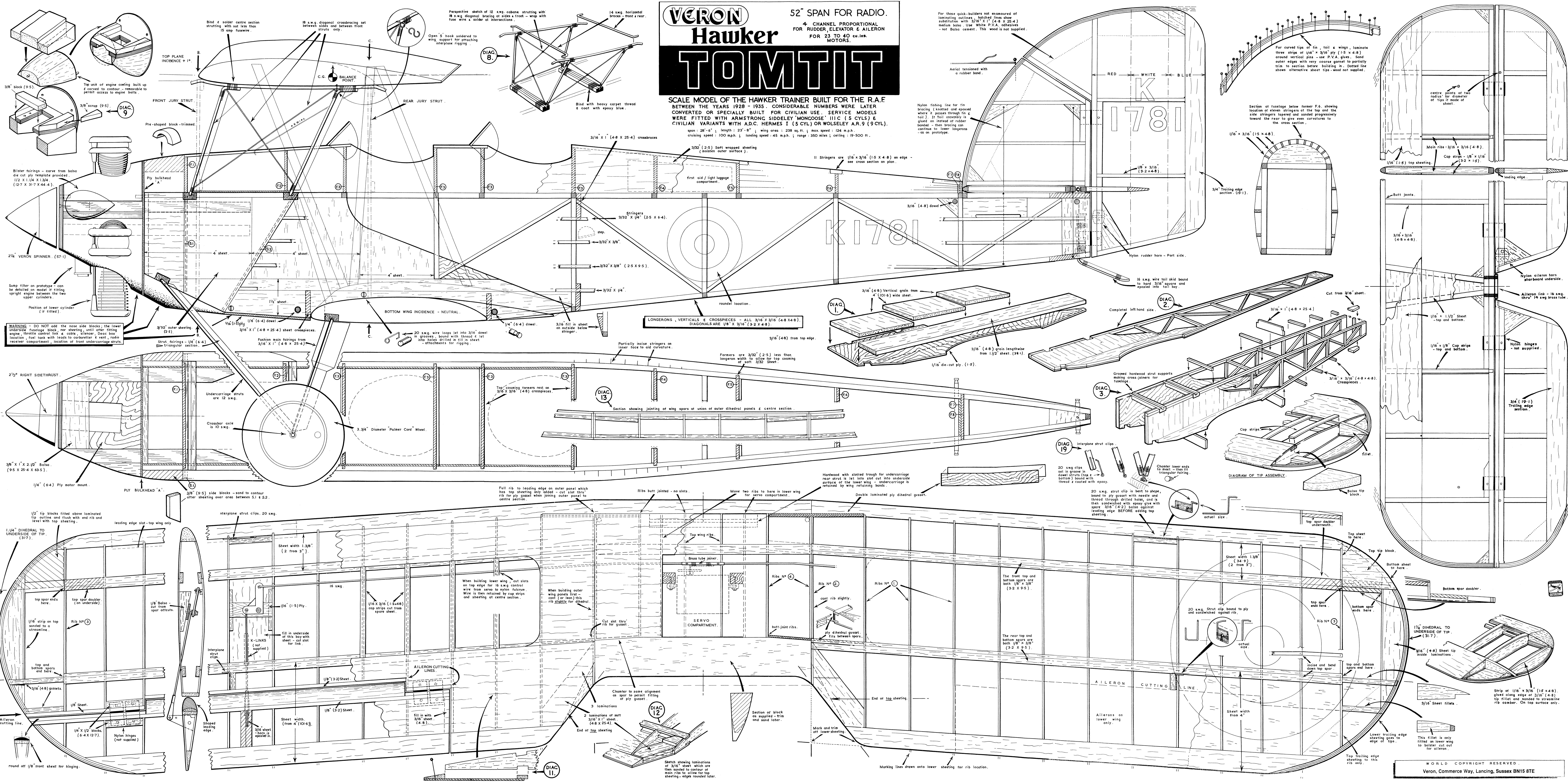


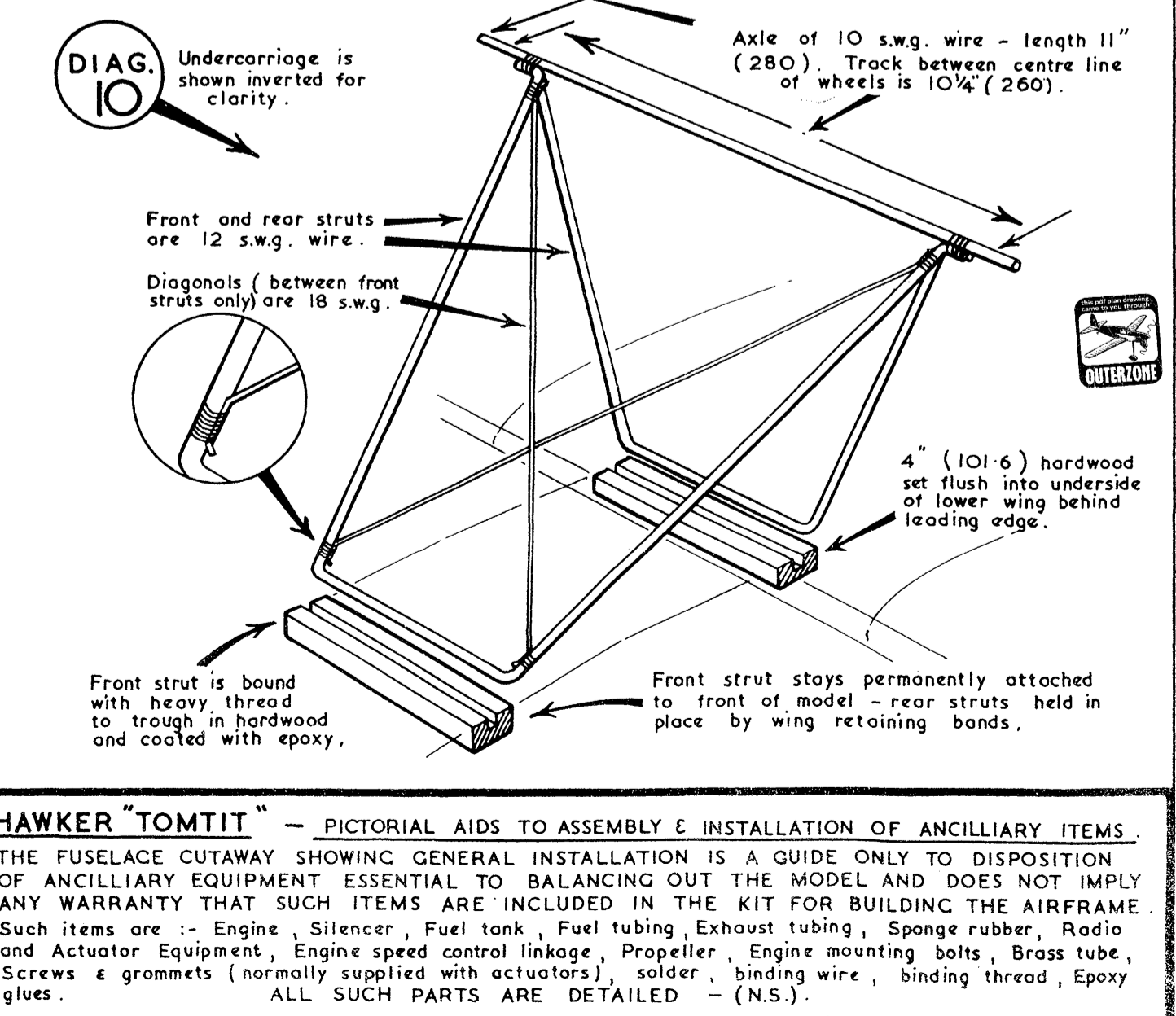
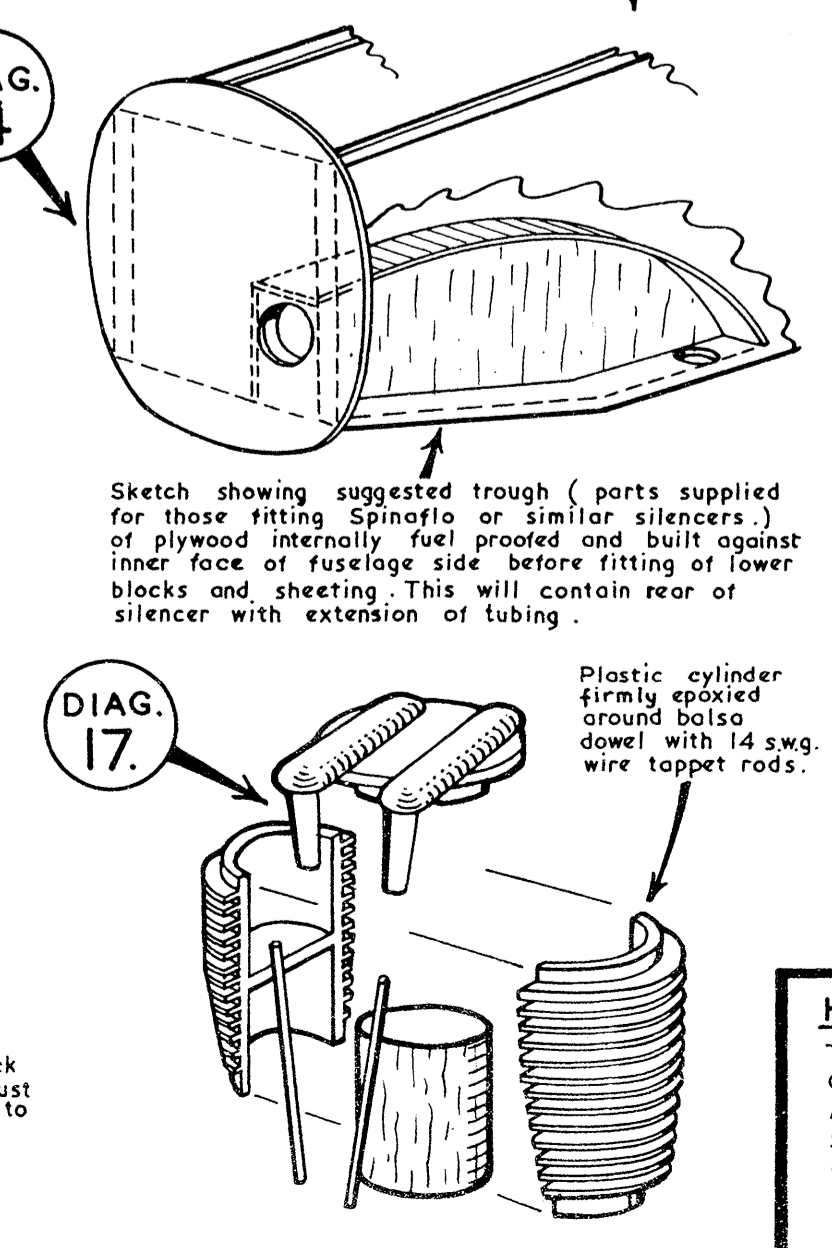
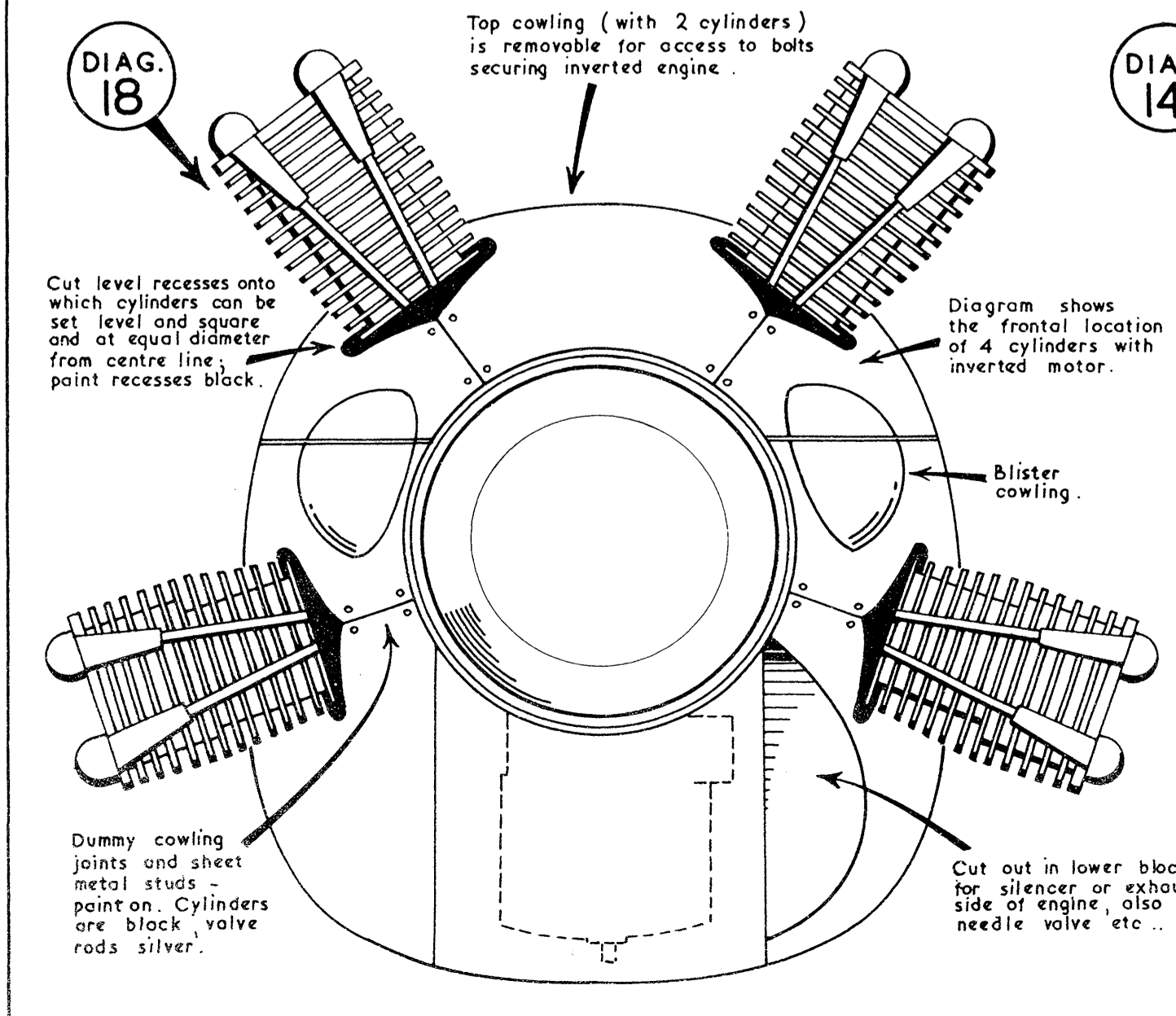
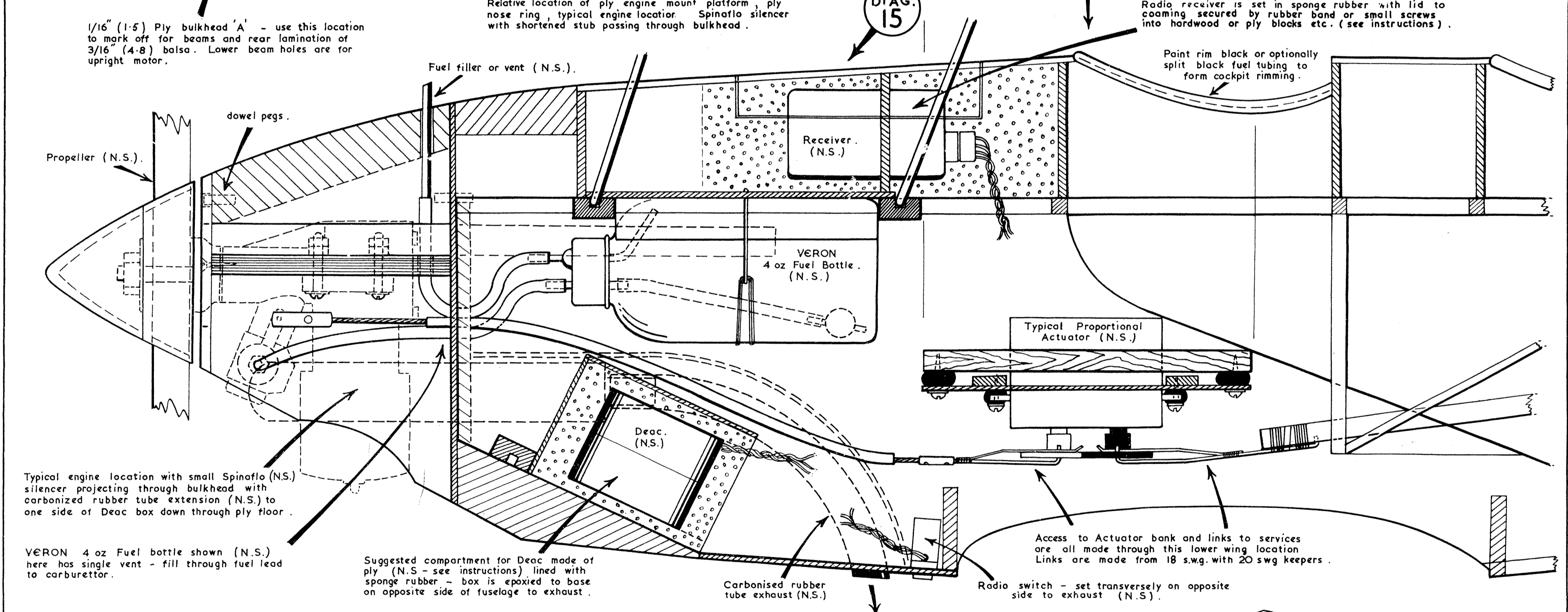
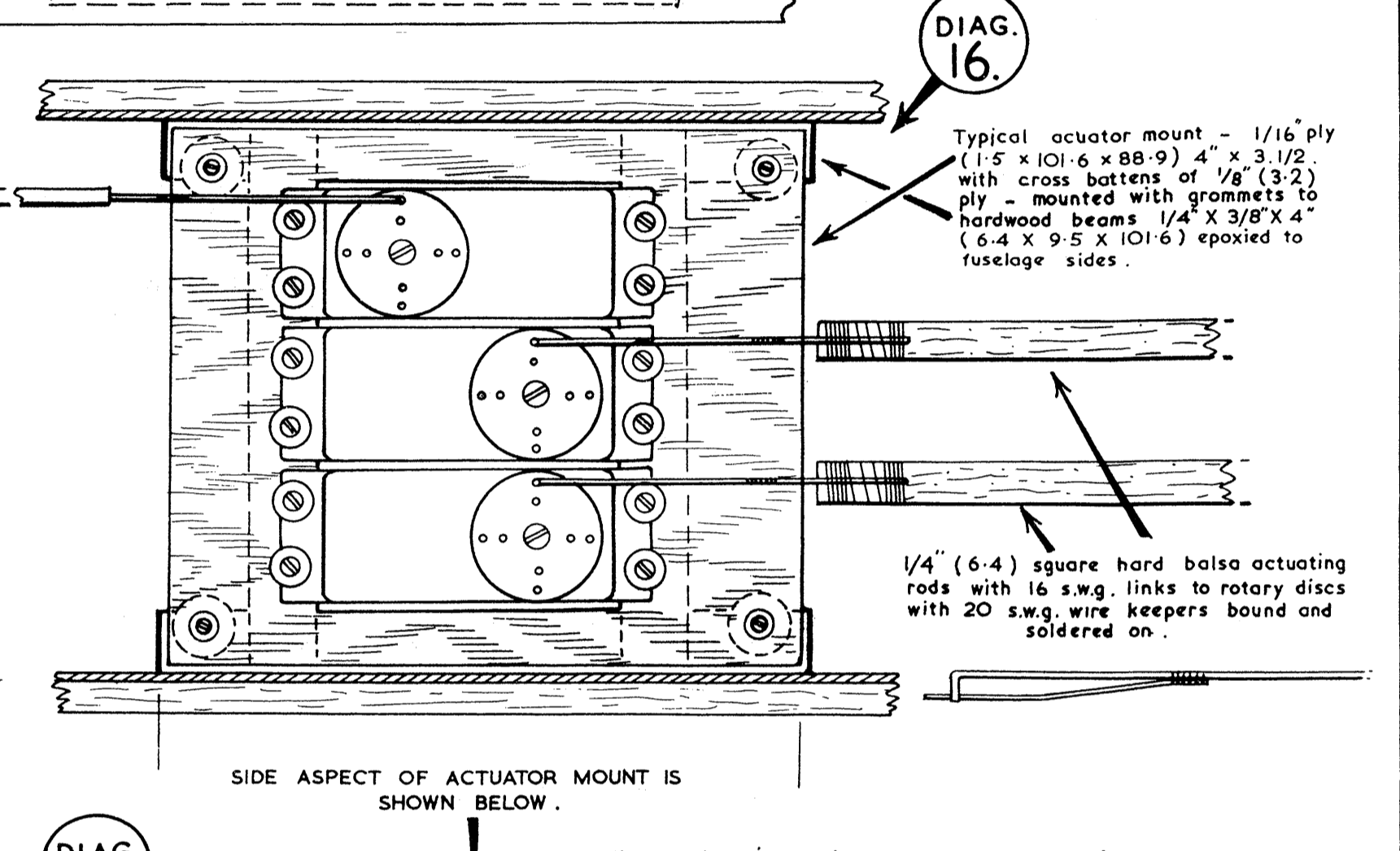
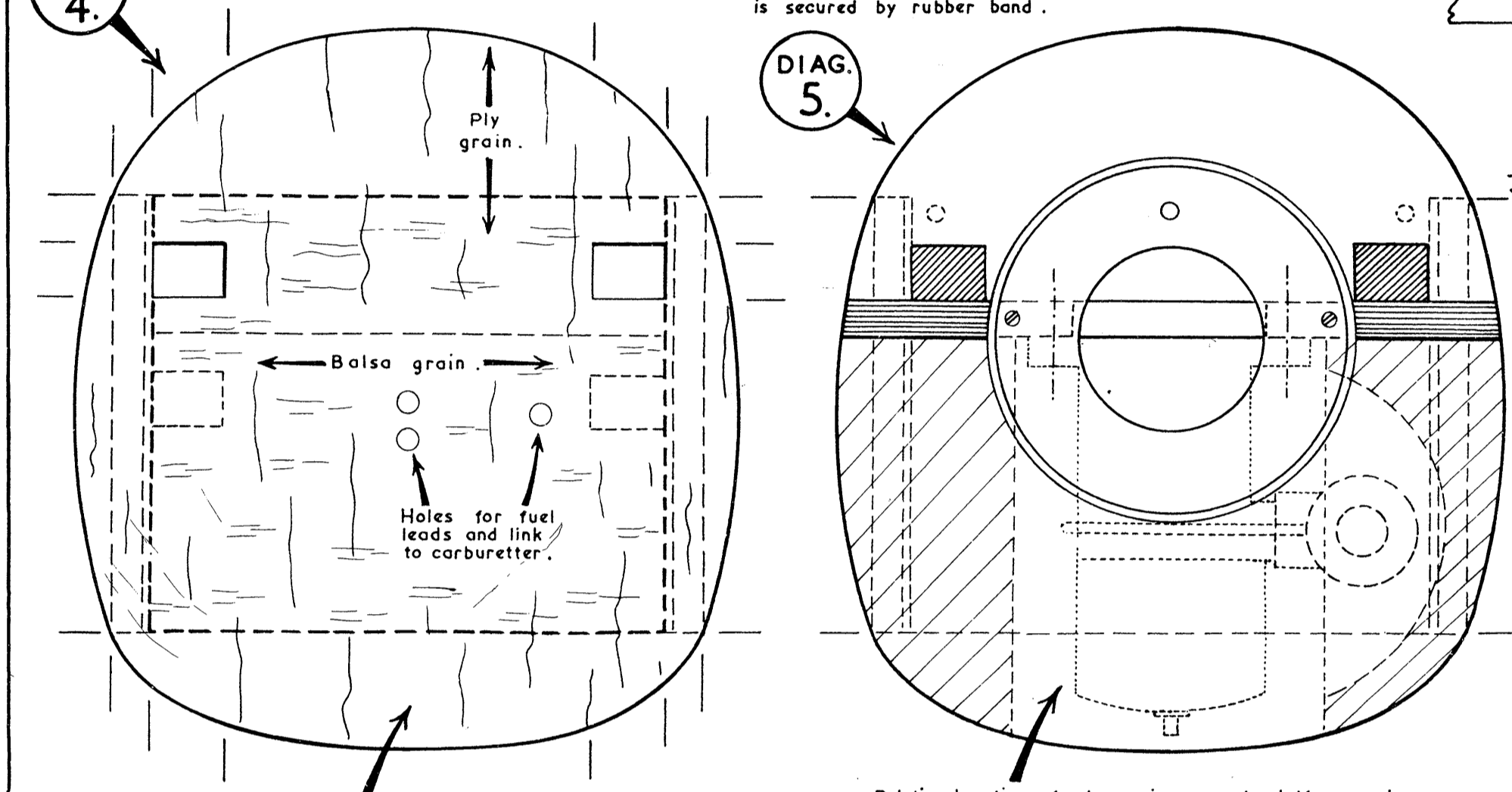
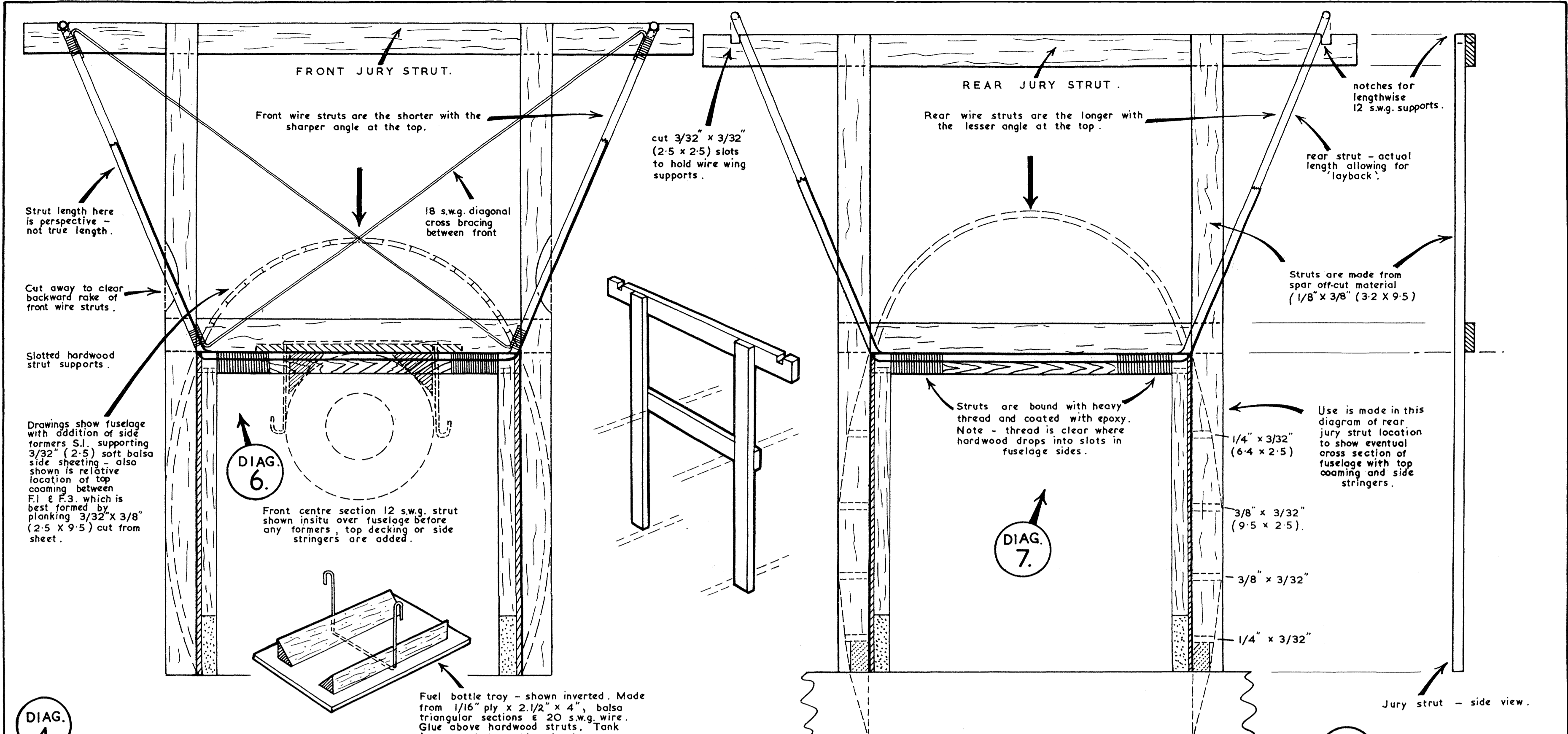
VERON Hawker TOMTIT

52" SPAN FOR RADIO.
4 CHANNEL PROPORTIONAL FOR RUDDER, ELEVATOR & AILERON FOR 23 TO 40 cu.ins. MOTORS.

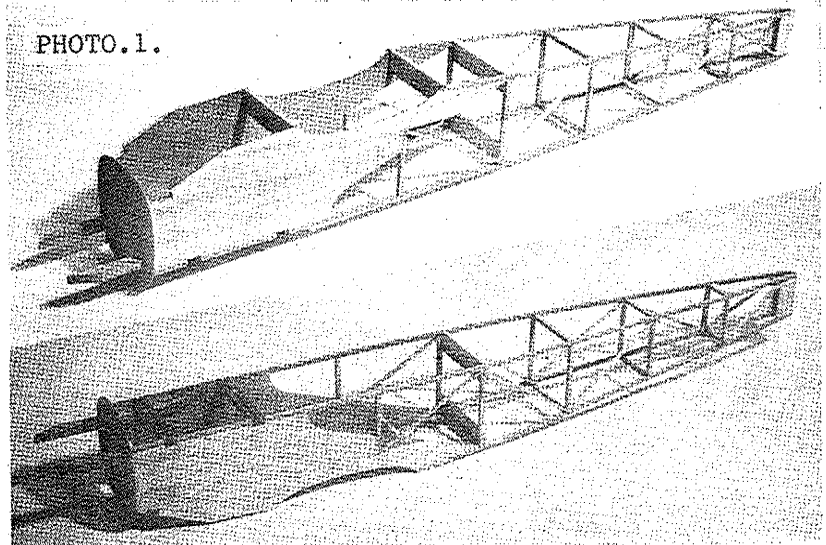
SCALE MODEL OF THE HAWKER TRAINER BUILT FOR THE R.A.F. BETWEEN THE YEARS 1928 - 1935. CONSIDERABLE NUMBERS WERE LATER CONVERTED OR SPECIALLY BUILT FOR CIVILIAN USE. SERVICE MODELS WERE FITTED WITH ARMSTRONG SIDDELEY 'MONGOOSE' 111C (5 CYL.) & CIVILIAN VARIANTS WITH A.D.C. HERMES I (5 CYL.) OR WOLSELEY A.R.9 (9 CYL.)

span: 26'-6"; length: 23'-8"; wing area: 238 sq. ft.; max. speed: 124 m.p.h. cruising speed: 100 m.p.h.; landing speed: 45 m.p.h.; range: 350 miles; ceiling: 19,500 ft.

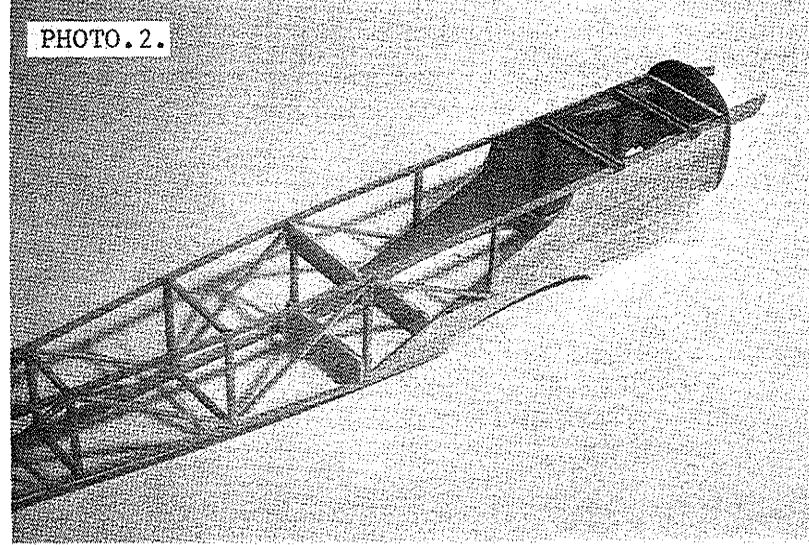




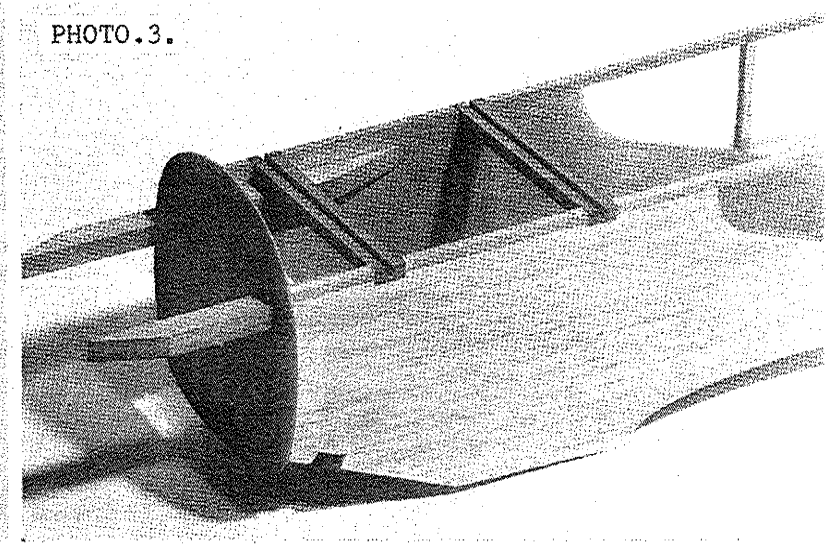
HAWKER "TOMTIT" - PICTORIAL AIDS TO ASSEMBLY & INSTALLATION OF ANCILLARY ITEMS.
THE FUSELAGE CUTAWAY SHOWING GENERAL INSTALLATION IS A GUIDE ONLY TO DISPOSITION OF ANCILLARY EQUIPMENT ESSENTIAL TO BALANCING OUT THE MODEL AND DOES NOT IMPLY ANY WARRANTY THAT SUCH ITEMS ARE INCLUDED IN THE KIT FOR BUILDING THE AIRFRAME. Such items are - Engine, Silencer, Fuel tank, Fuel tubing, Exhaust tubing, Sponge rubber, Radio and Actuator Equipment, Engine speed control linkage, Propeller, Engine mounting bolts, Brass tube, Screws & grommets (normally supplied with actuators), solder, binding wire, binding thread, Epoxy glues.
ALL SUCH PARTS ARE DETAILED - (N.S.).



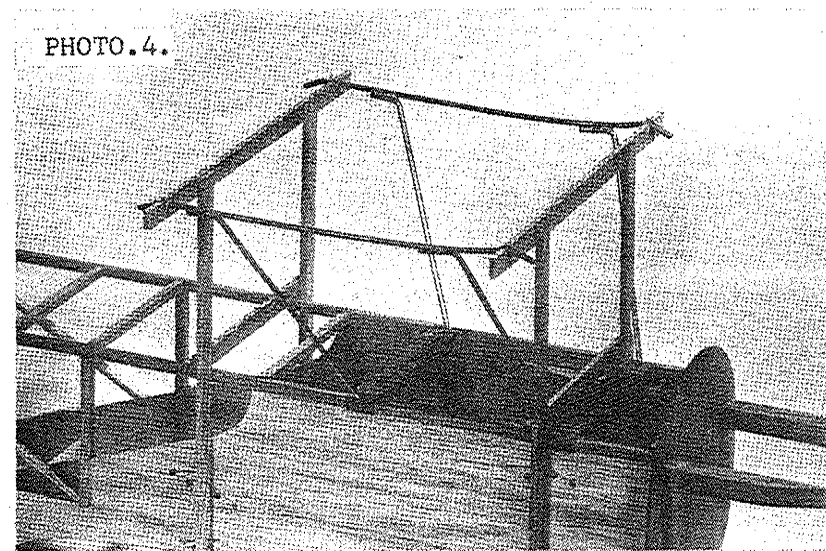
BASIC FUSELAGE STRUCTURE



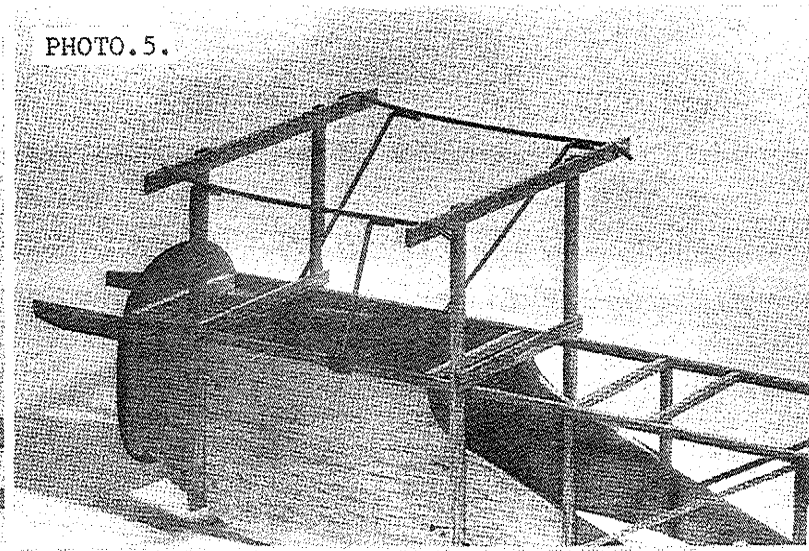
TOP & BOTTOM CROSSBRACES



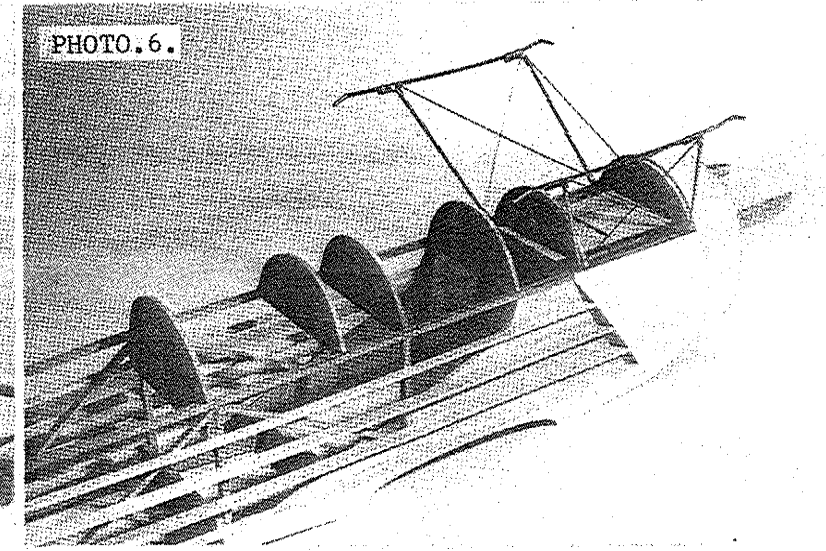
GROOVED HARDWOOD STRUT SUPPORTS



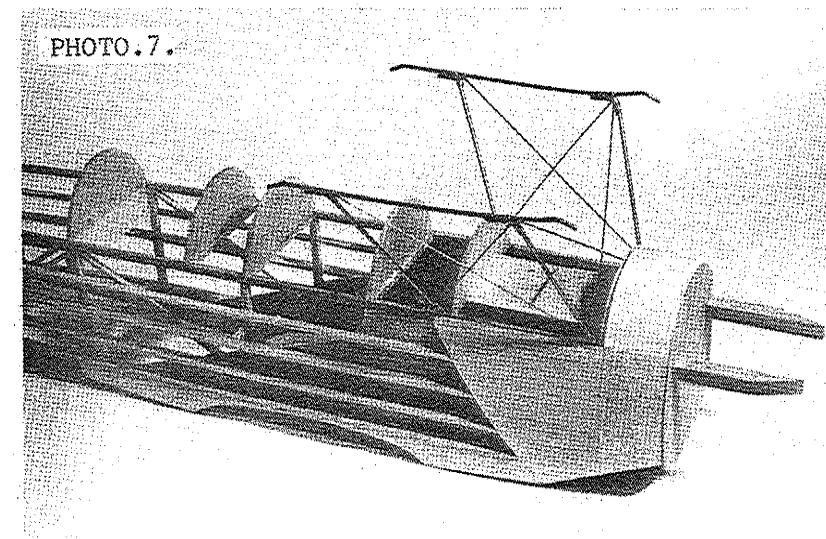
LOCATION OF JURY STRUTS



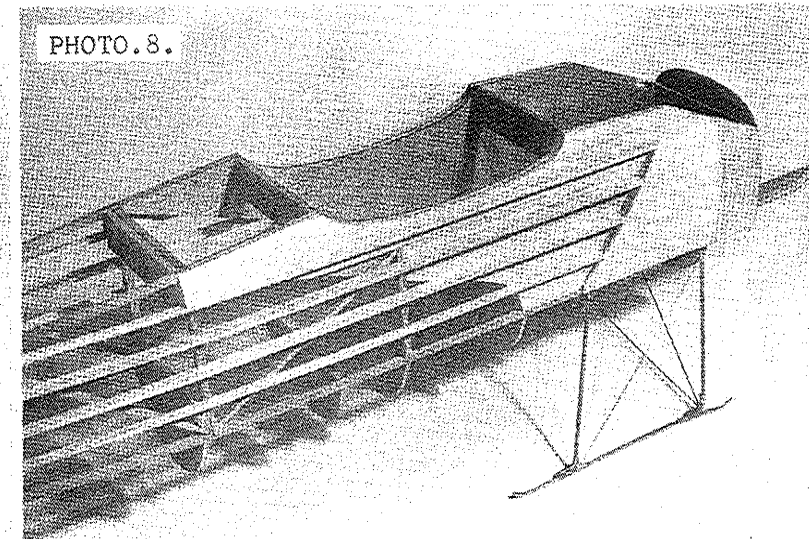
WIRE CABANE STRUTS TOUCH SOLDERED



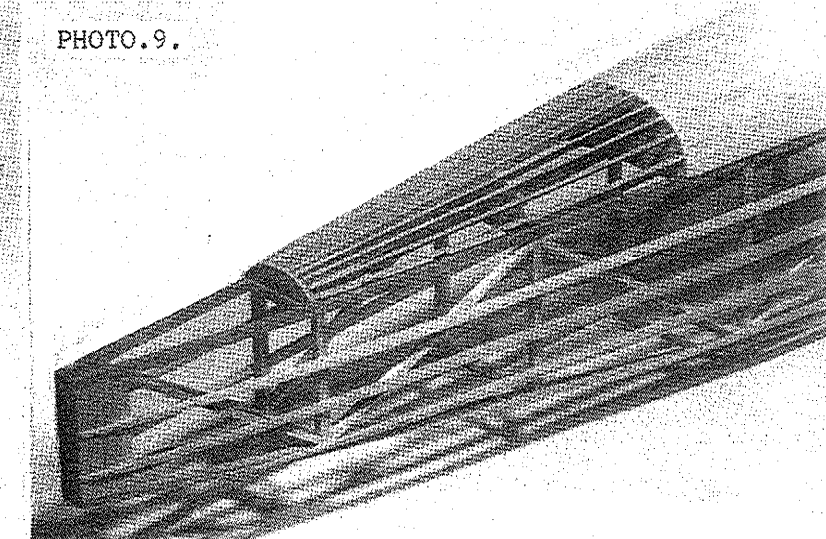
CABANE COMPLETE & COAMING FORMERS



FRONT FUSELAGE BLOCKS, SHEETING



STRINGERS & WING SEAT LOCATION



STERN BAY & TOP STRINGERS

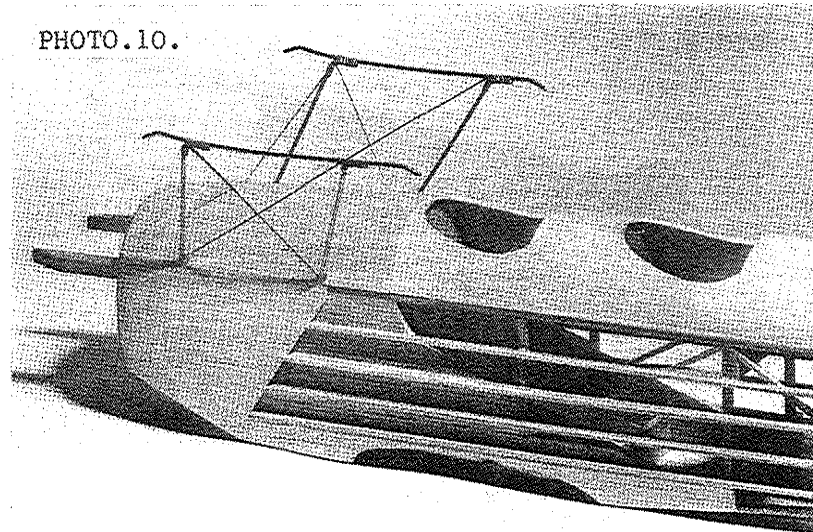


PHOTO.10.

COAMING & COCKPIT SHEETING

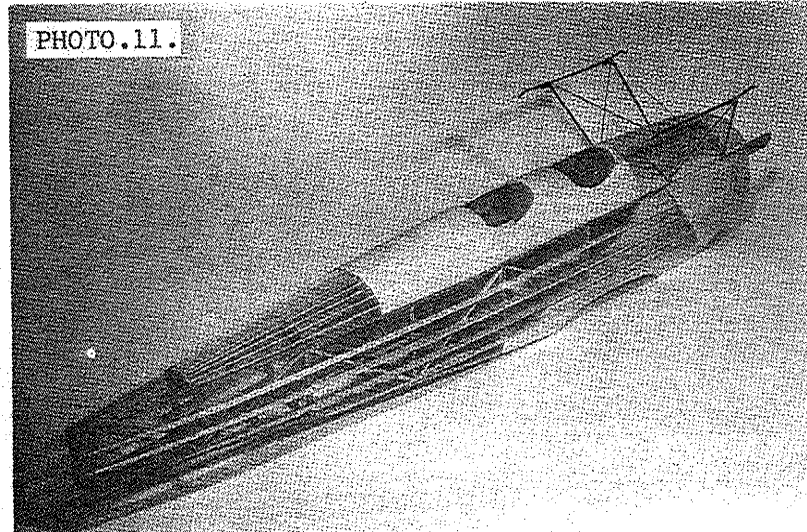


PHOTO.11.

COMPLETE FUSELAGE READY FOR COVERING

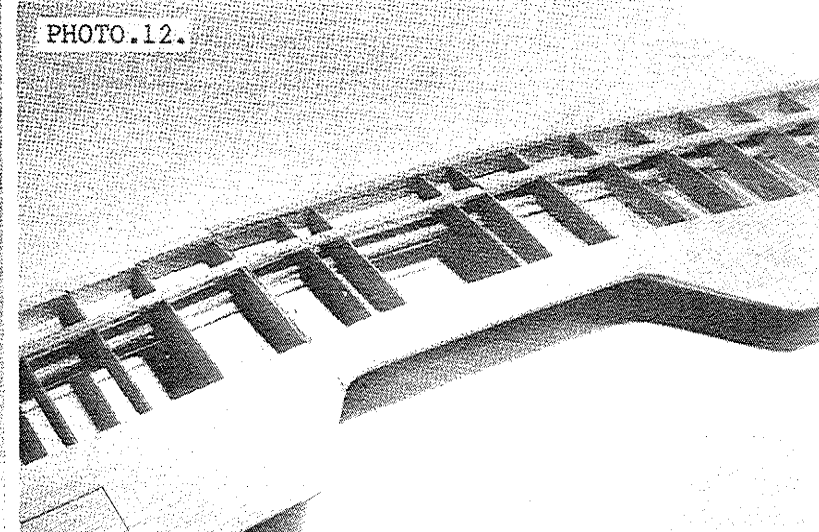


PHOTO.12.

WING CENTRE-SECTION UNDERSIDE

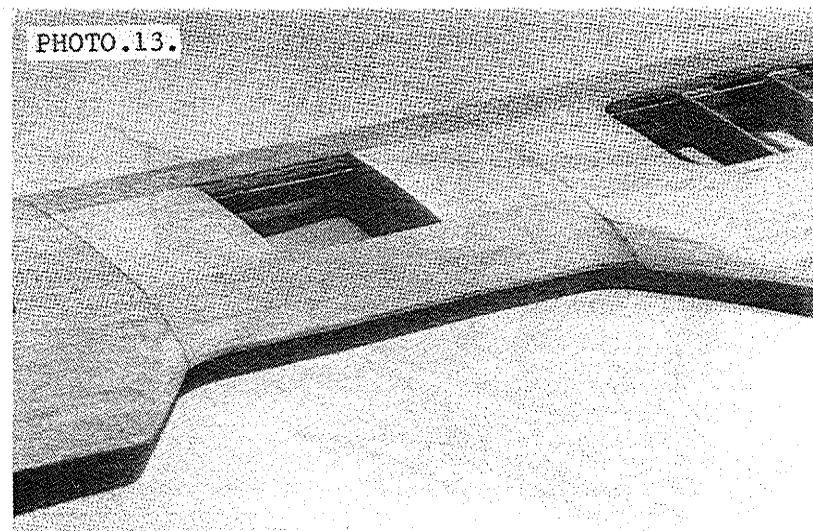


PHOTO.13.

CENTRE-SECTION TOPSIDE COMPLETED

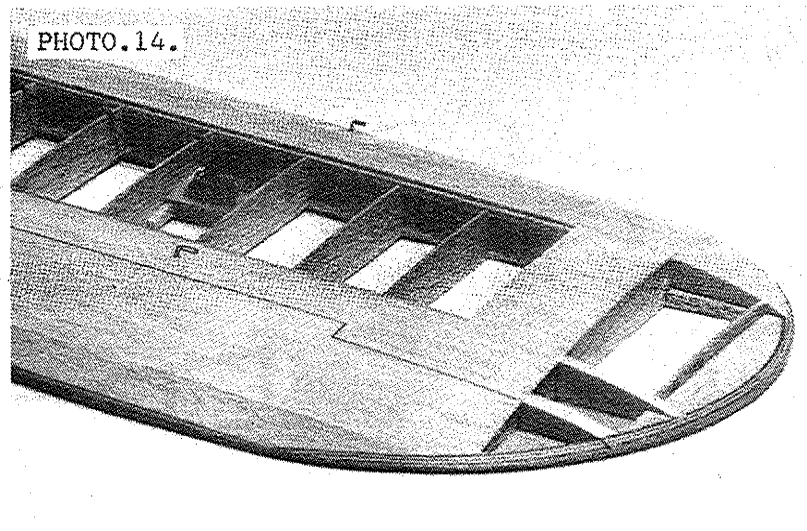


PHOTO.14.

WING TIP STRUCTURE TOP SIDE

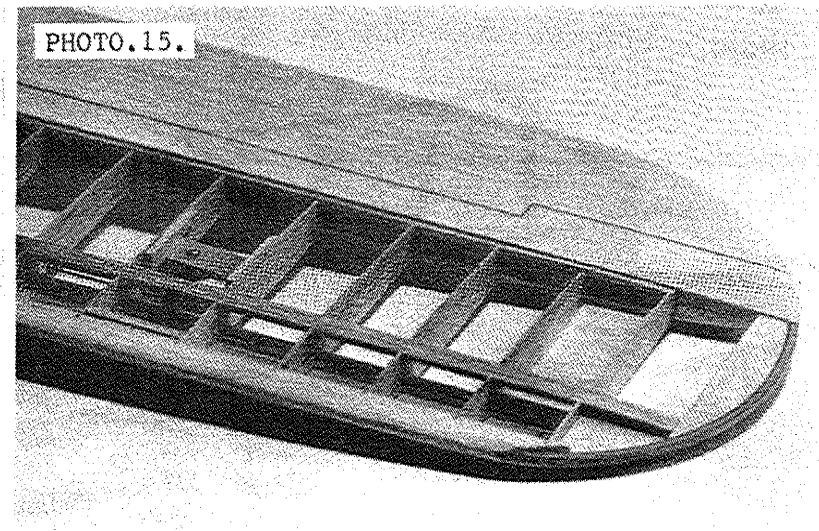


PHOTO.15.

WING TOP STRUCTURE UNDERSIDE

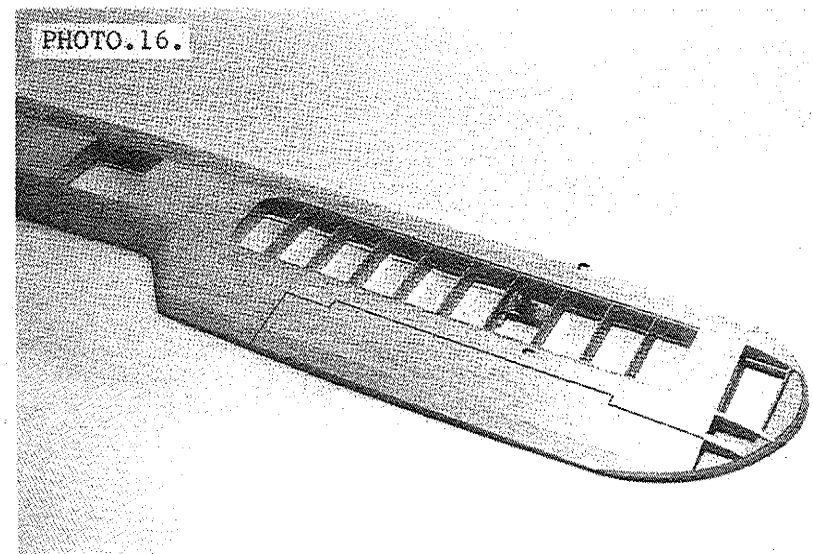


PHOTO.16.

COMPLETE LOWER WING STRUCTURE

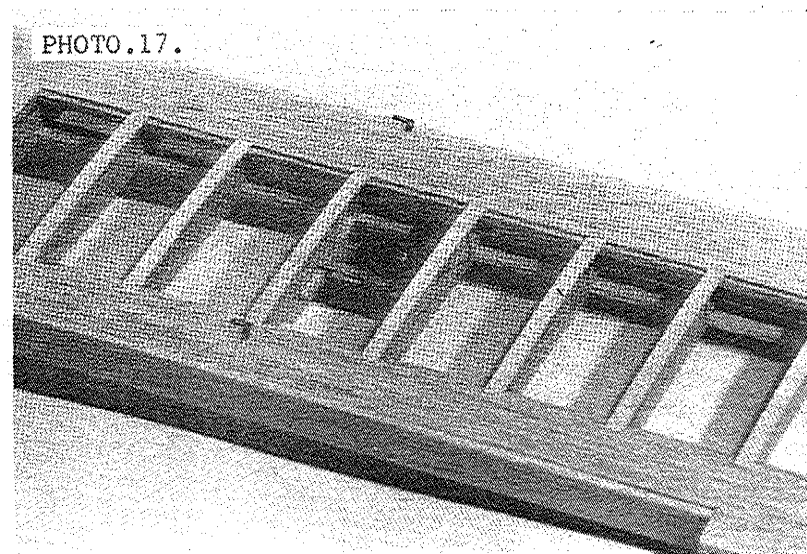


PHOTO.17.

FULCRUM & AILERON CUT OUT

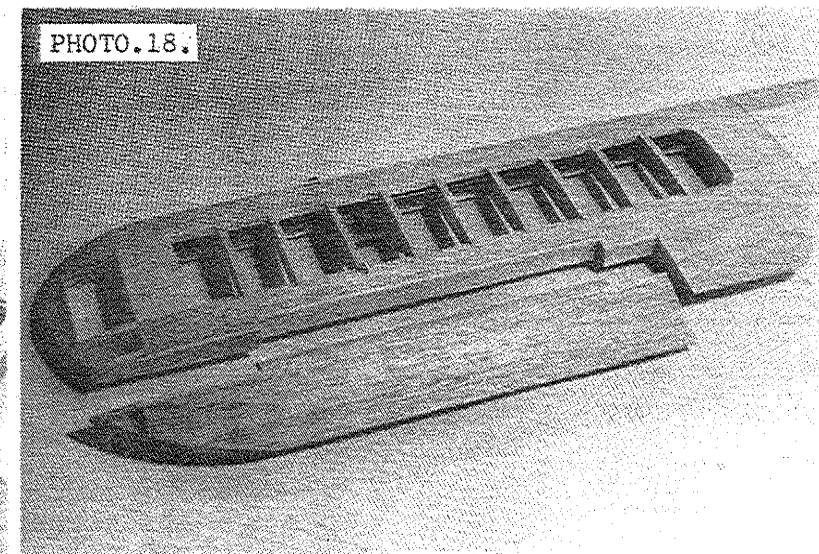
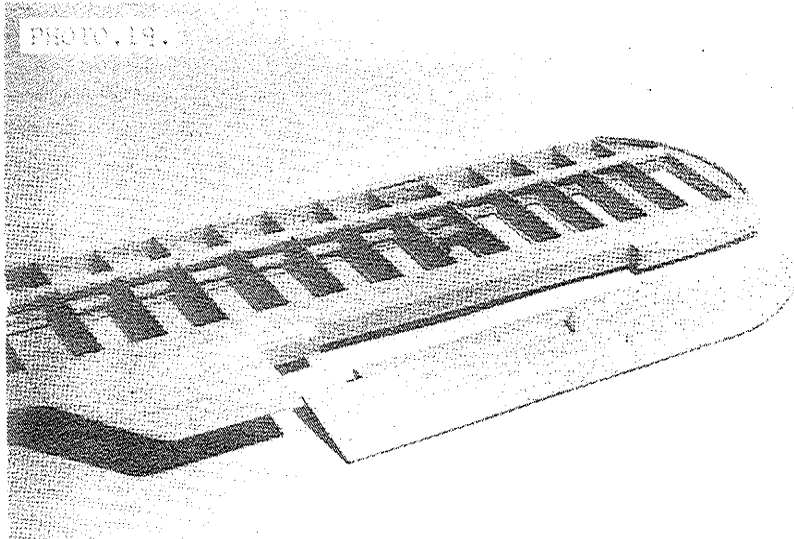
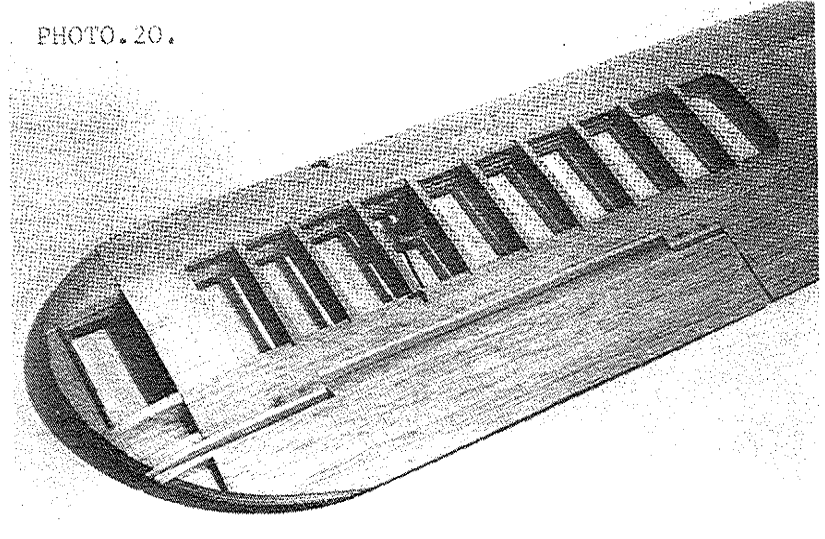


PHOTO.18.

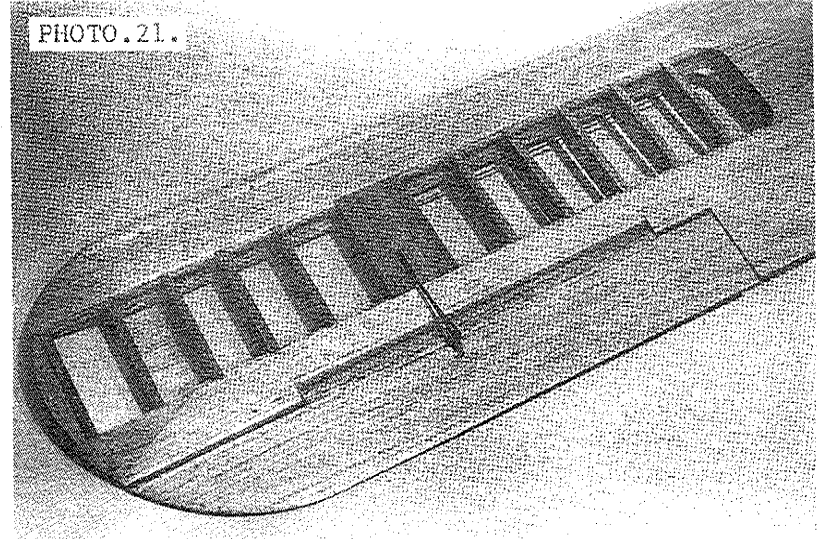
AILERON COMPLETE READY FOR HINGING



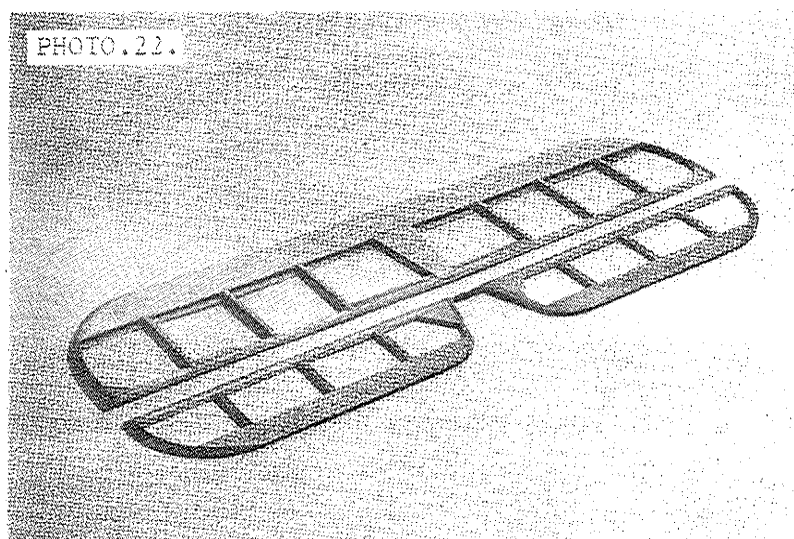
AILERON ASSEMBLY-UNDERSIDE



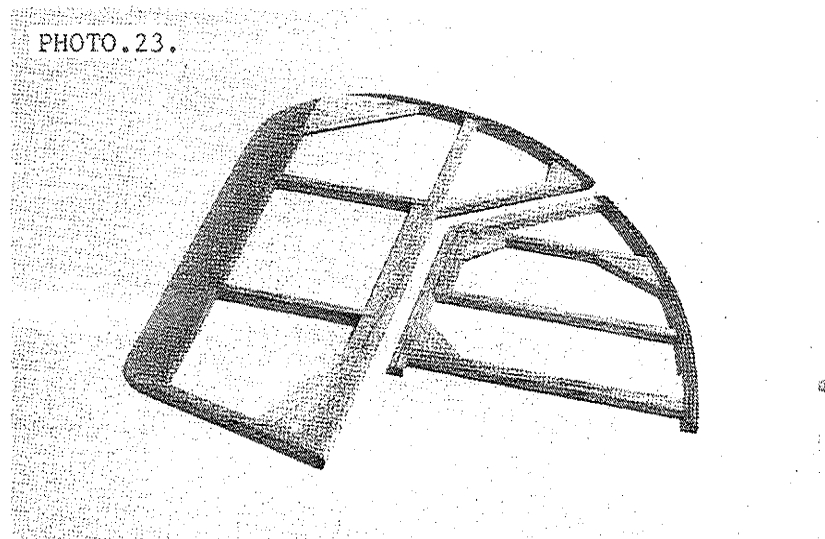
AILERON FITTED & HINGED-TOPSIDE



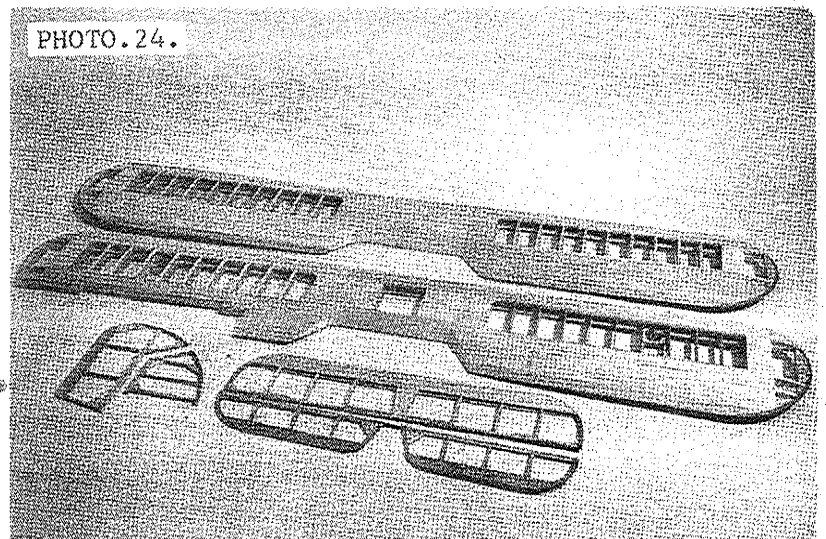
AILERON LINKAGE-UNDERSIDE



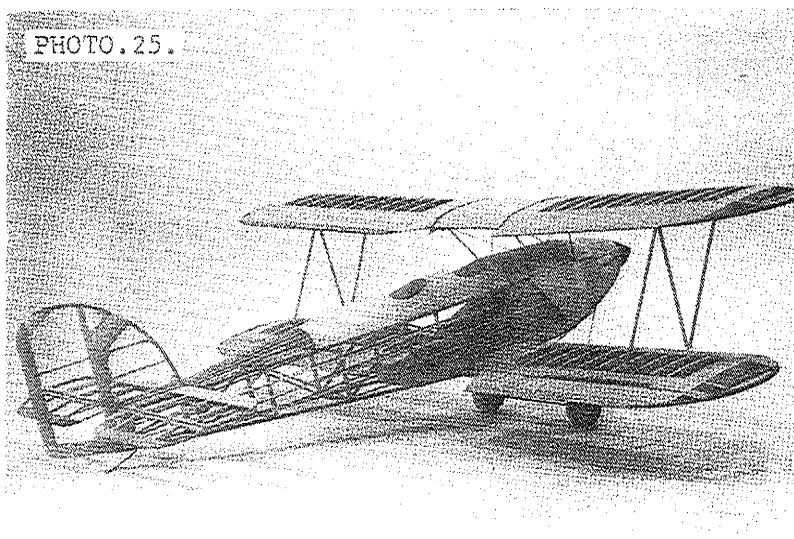
TAILPLANE & ELEVATOR COMPLETED



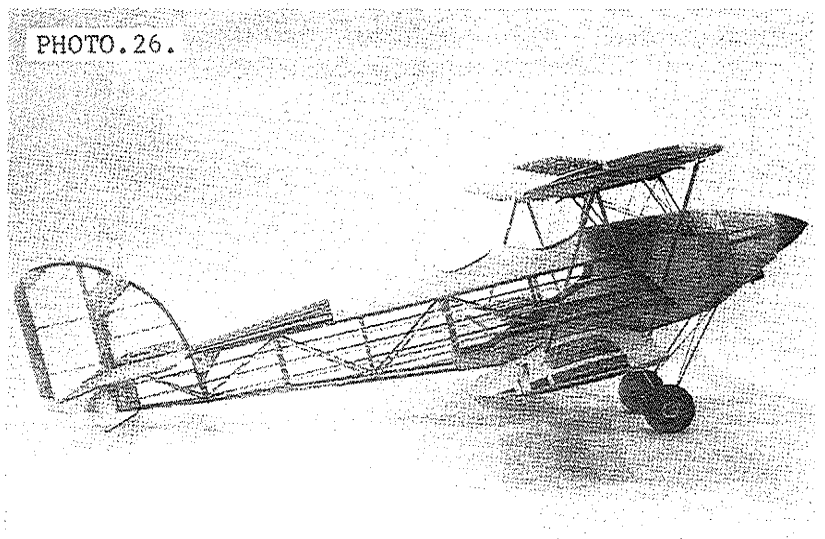
FIN & RUDDER STRUCTURE



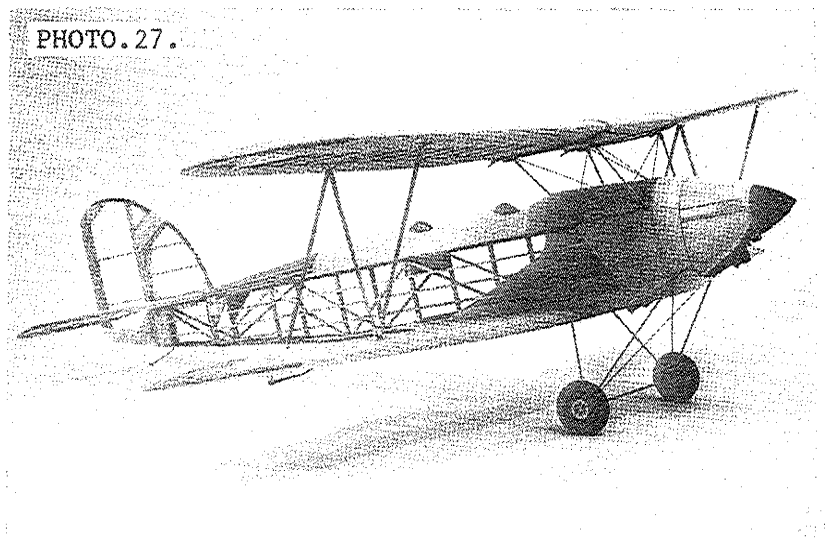
WINGS & TAIL-READY FOR COVERING



PRE-COVERING & RIGGED STRUCTURE



SIDE SHOWING NEAT ENGINE COWLING



SHOWING INTERPLANE STRUTTING & UNDERCART

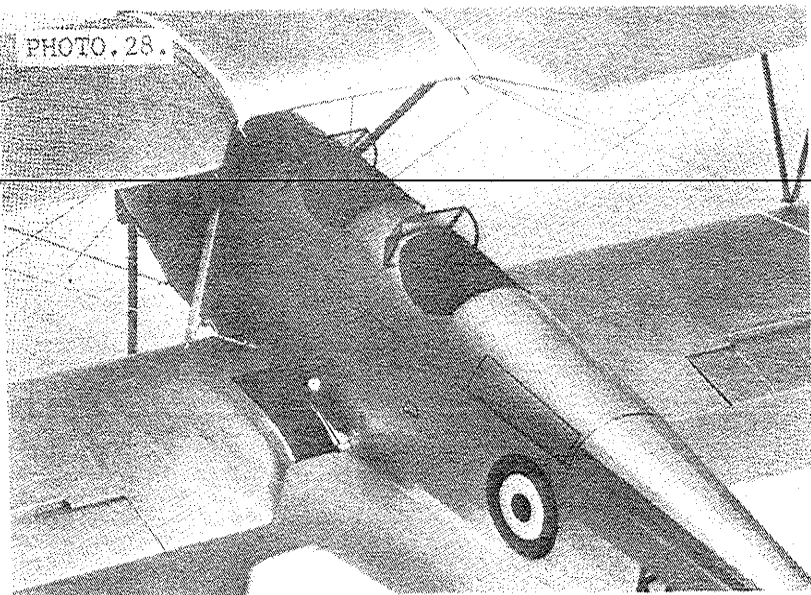


PHOTO. 28.

COCKPIT AREA DETAIL & RIGGING

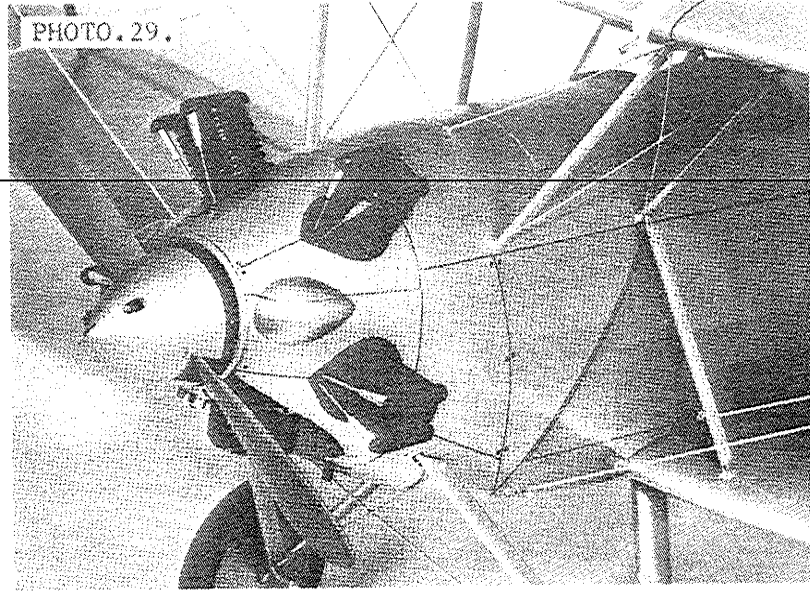


PHOTO. 29.

COWLING INSTALLATION & CYLINDER ASSEMBLY

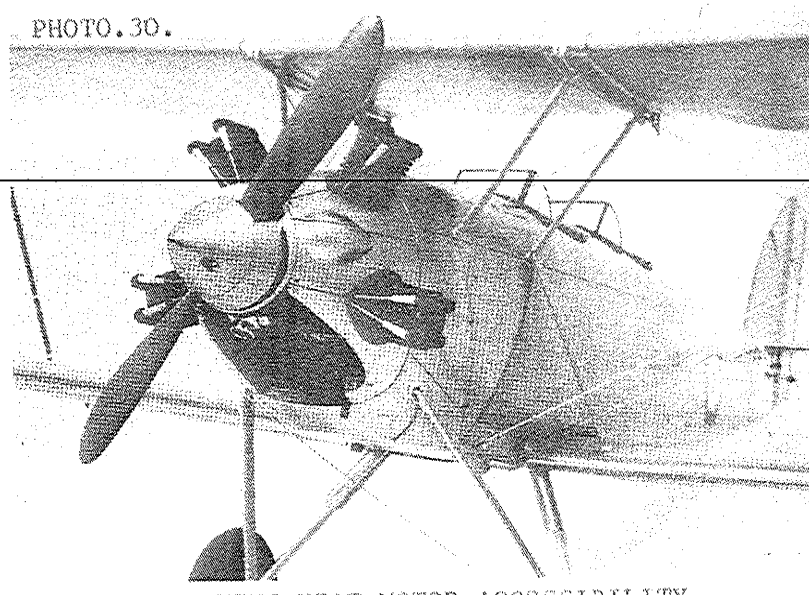


PHOTO. 30.

SHOWING NEAT MOTOR ACCESSIBILITY

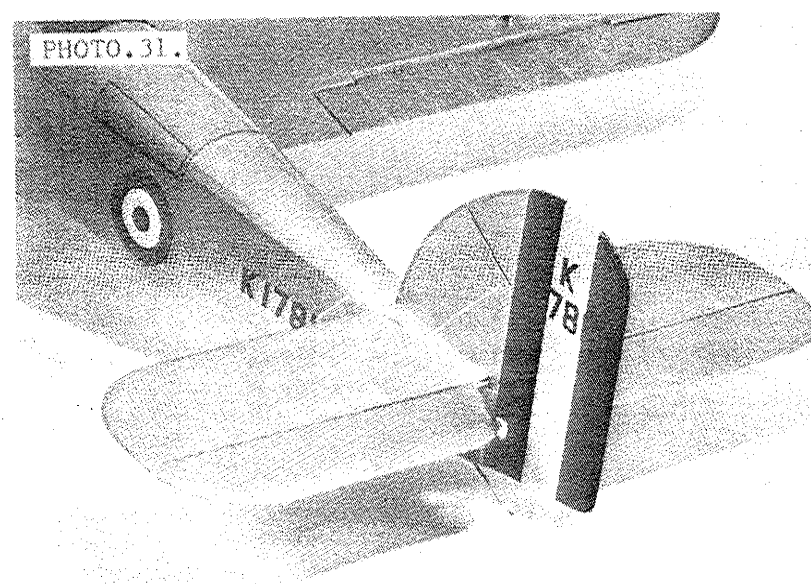


PHOTO. 31.

TAIL ASSEMBLY - NOTE NYLON RIGGING

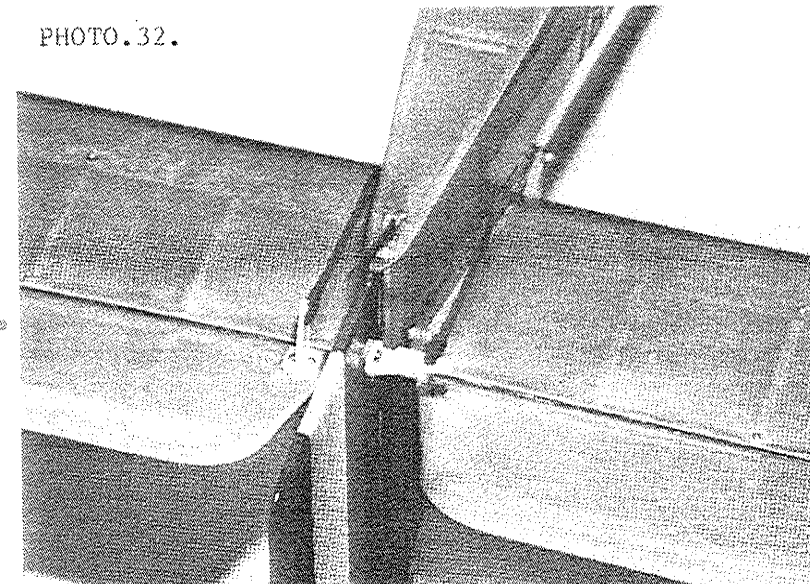


PHOTO. 32.

RUDDER & ELEVATOR LINKAGE.

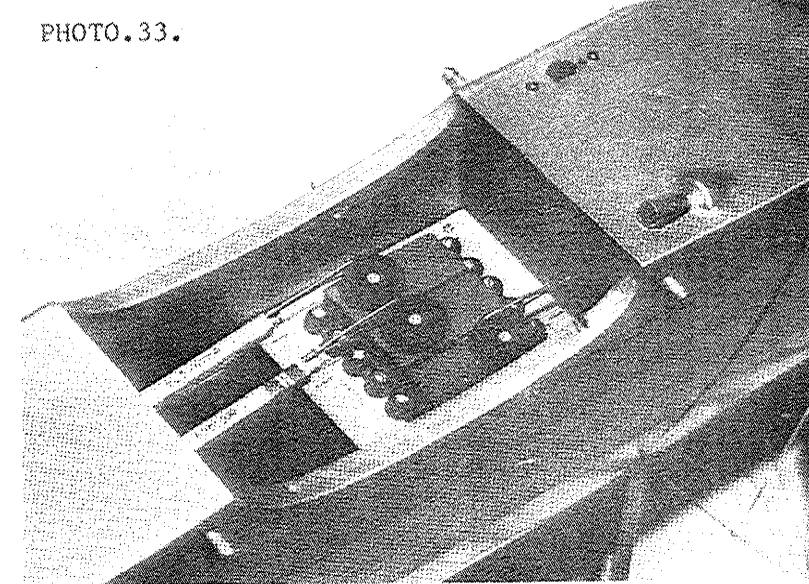
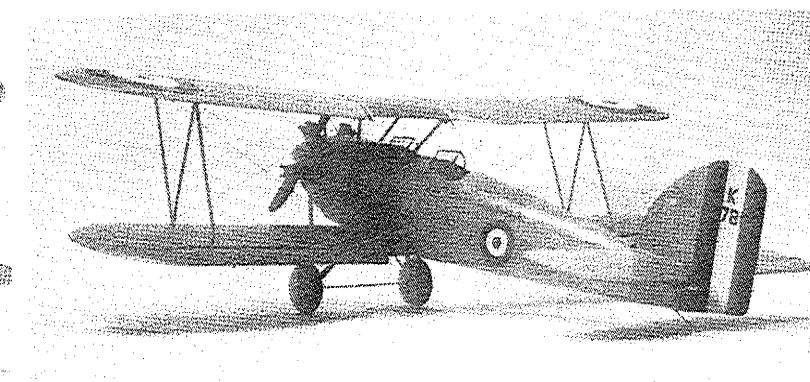
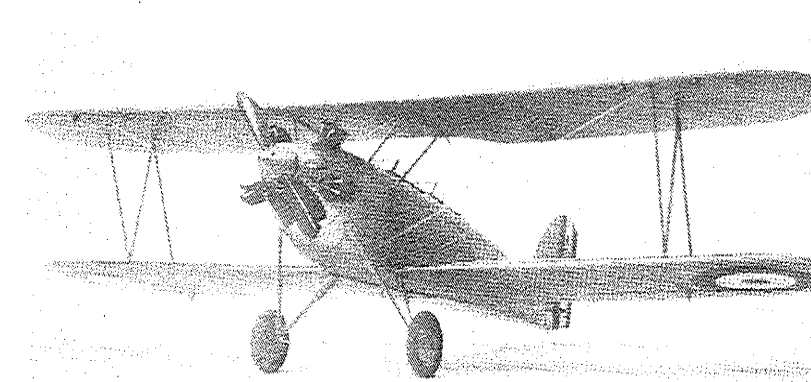


PHOTO. 33.

ACTUATOR INSTALLATION, SWITCH & EXHAUST



THREE VIEWS SHOWING ELEGANT PROPORTIONS OF MODEL IN 1928 ROYAL AIR FORCE MARKINGS.