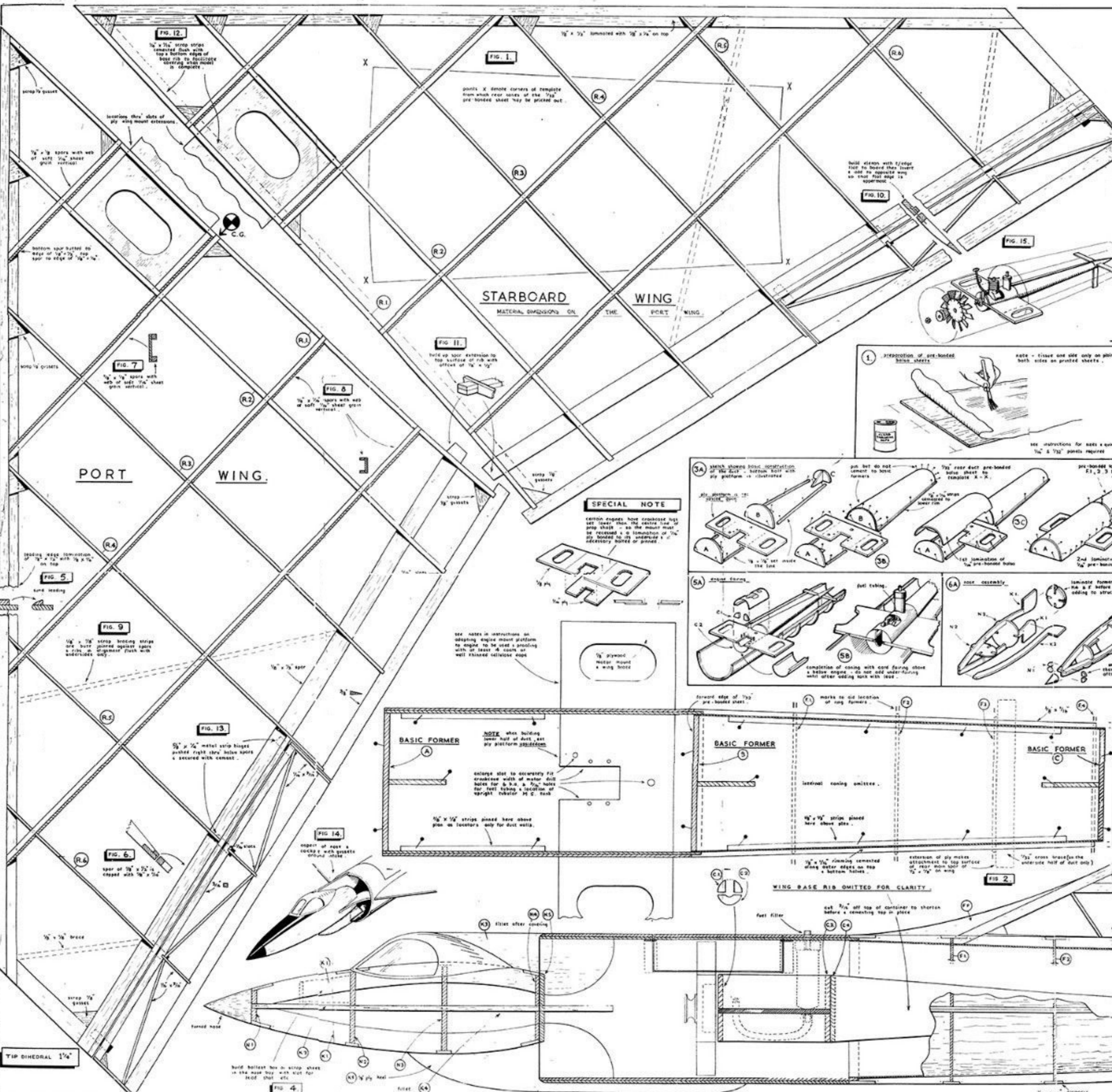
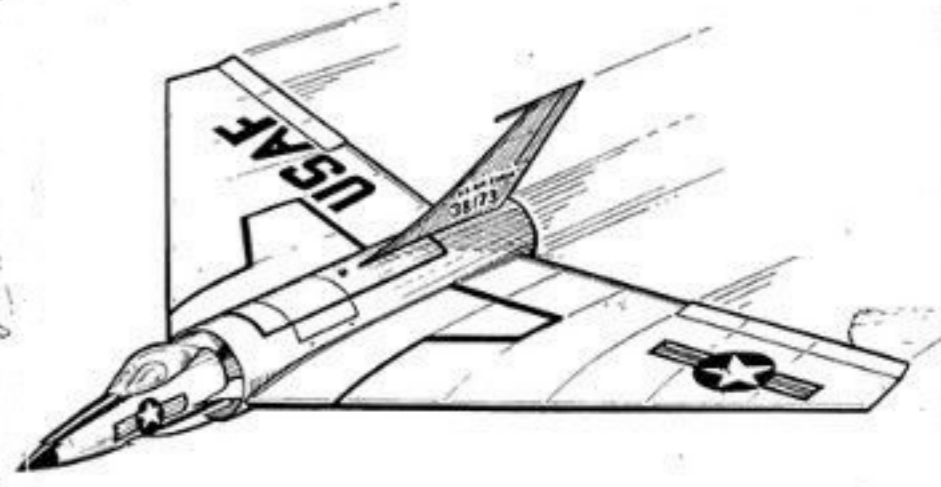


# Deltaceptor

A MODERNISTIC DELTA-FORM RAM-JET INTERCEPTOR for the 'IMP' SYSTEM of DUCTED FAN PROPULSION.

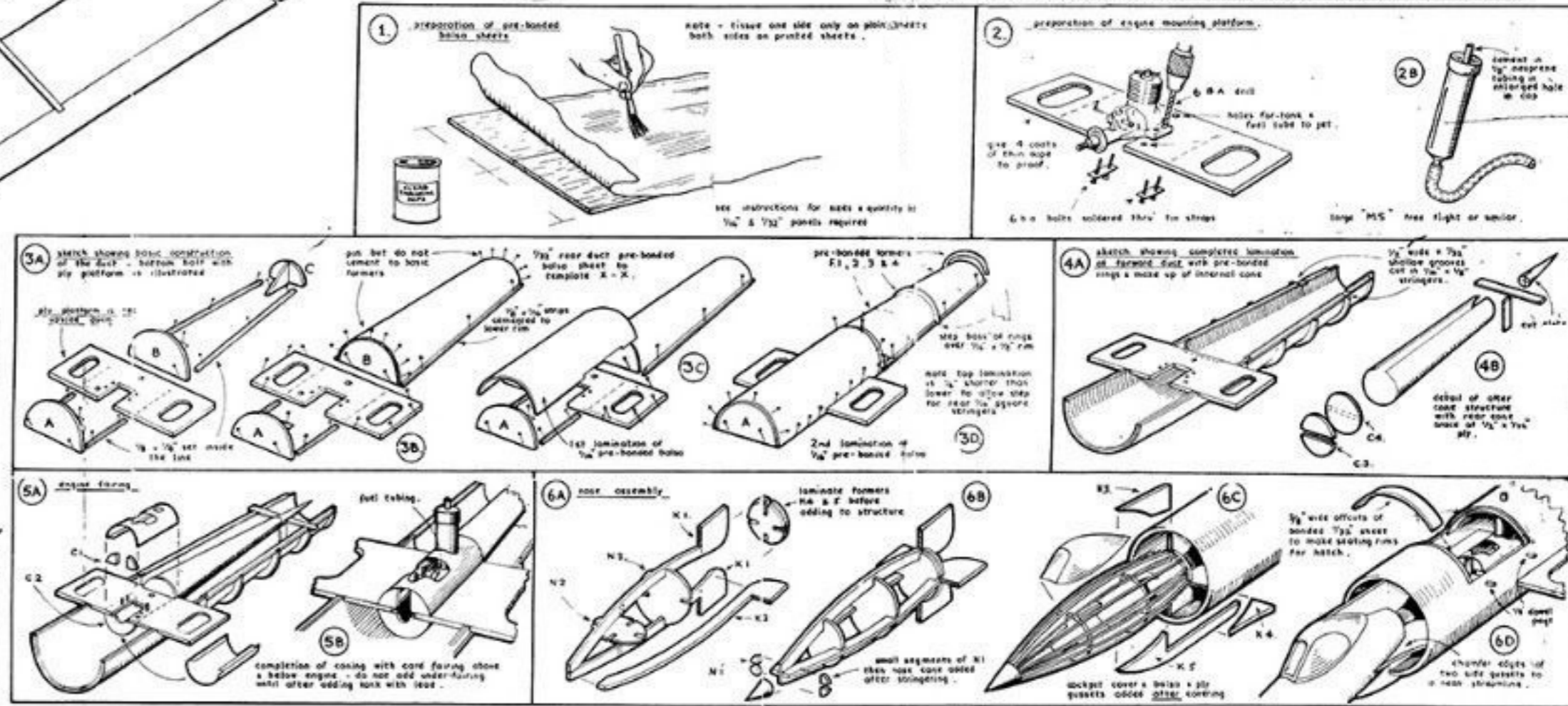
FOR 76 cc 1 c.c. DIESELS (& limited 149 cc.) WITH 'B' & 'C' VERON IMPELLERS



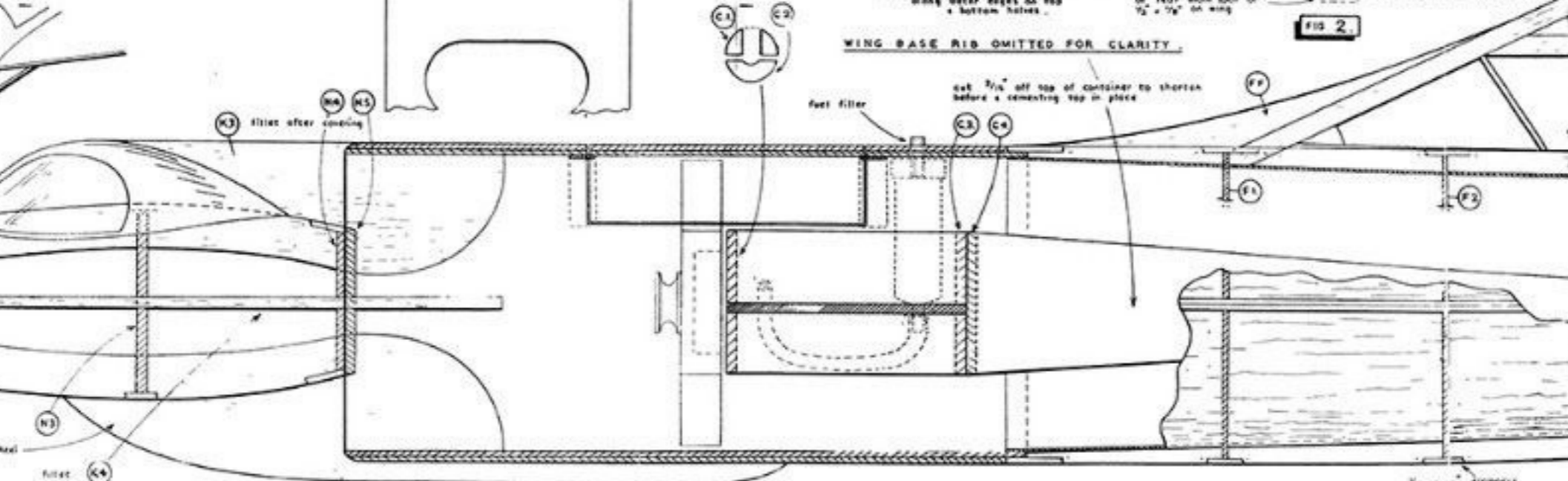
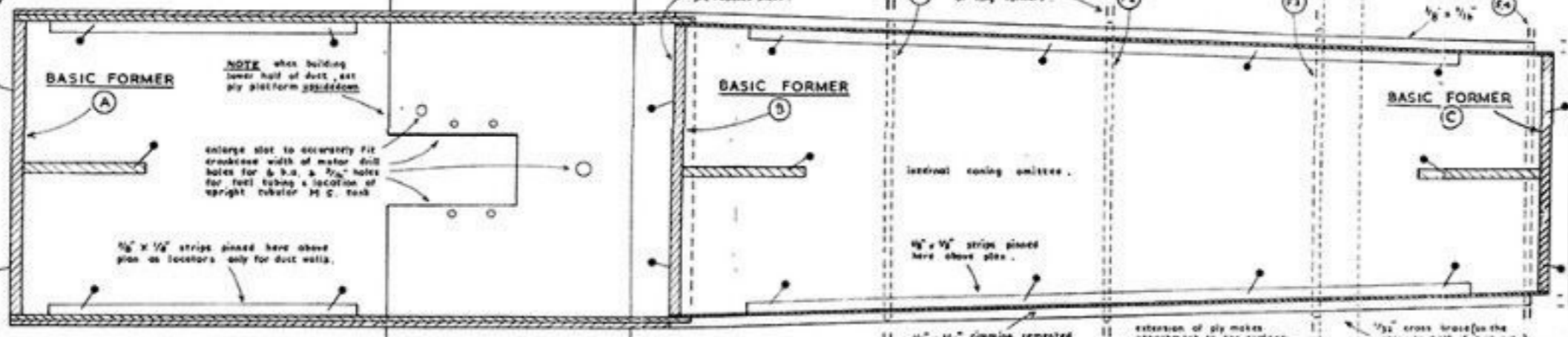
STARBOARD WING MATERIAL DIMENSIONS ON THE PORT WING

### SPECIAL NOTE

VERON engines have a propeller that set lower than the centre line of prop shaft - so the mount must be recessed a distance of 1/8" to 1/4" to allow the propeller to rotate freely.



THE 'DELTACEPTOR' IS DESIGNED FOR USE WITH THE FOLLOWING:-  
1) 76 cc TO 1 CC (0.41 TO 0.41 CU IN) ENGINES USING 3/2" DIAM TYPE 'B' IMPELLERS ALLISON 'MERLIN' & SUPER 'MERLIN', FROG 80, MILLS '75' ALLISON SPYGLASS 1 & 2, E.D. 'BEE' I.C.C. & SIMILAR CAPACITIES OF AMERICAN & CONTINENTAL ENGINES.  
2) RACING 1 CC (0.1 CU IN) ENGINES WITH 3/16" DIAM TYPE 'C' IMPELLERS - 'A.M.' 10' ETC.  
3) CERTAIN MEDIUM POWER OUTPUT ENGINES OF 1-49 cc CAPACITY & LIMITED OVERALL DIMENSIONS CAN BE USED WITH 3/2" DIAM TYPE 'C' IMPELLERS, SUCH AS ALLISON 'SABRE' 1-49 CC. & E.D. 'HORNET' 1-49 CC.



TIP DIHEDRAL 1 1/4"