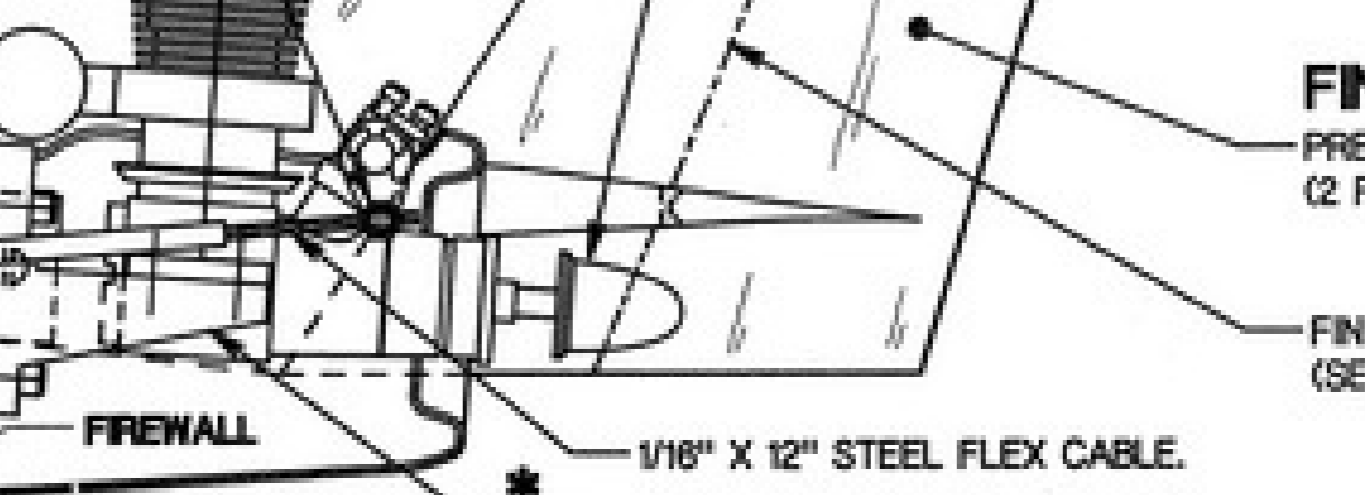
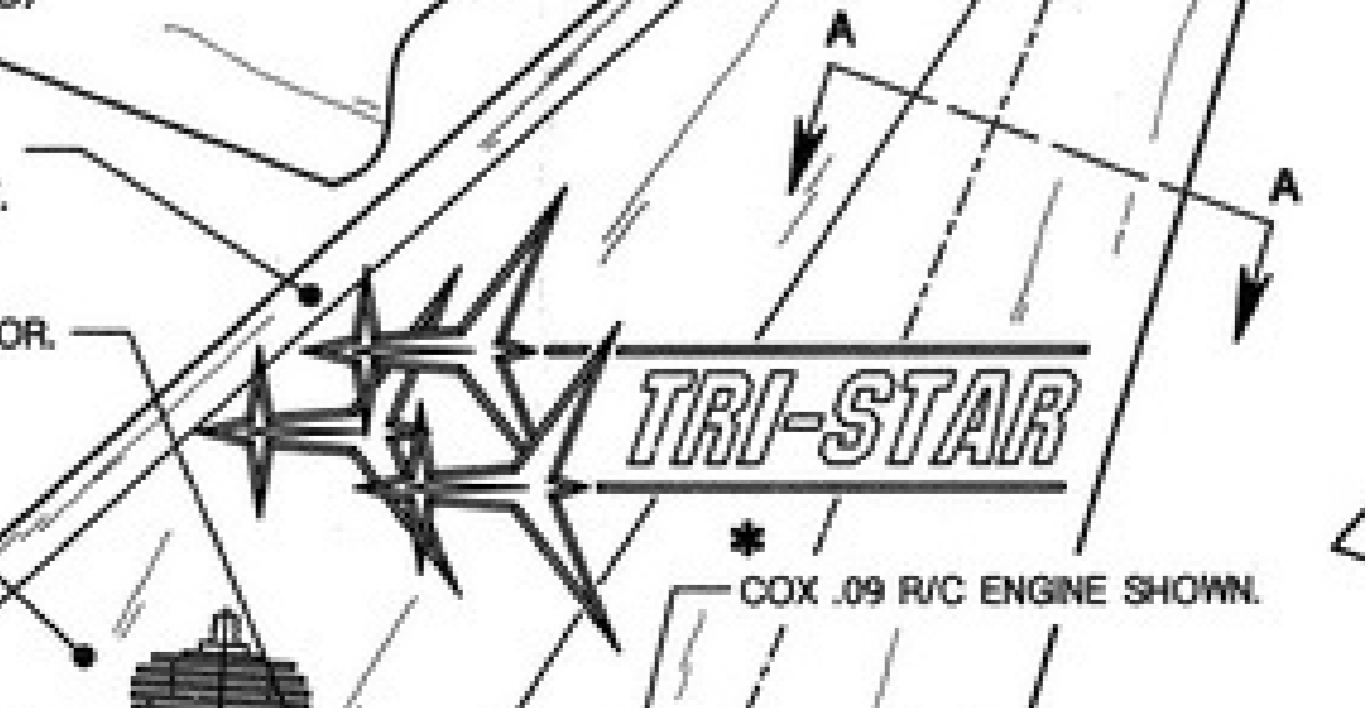
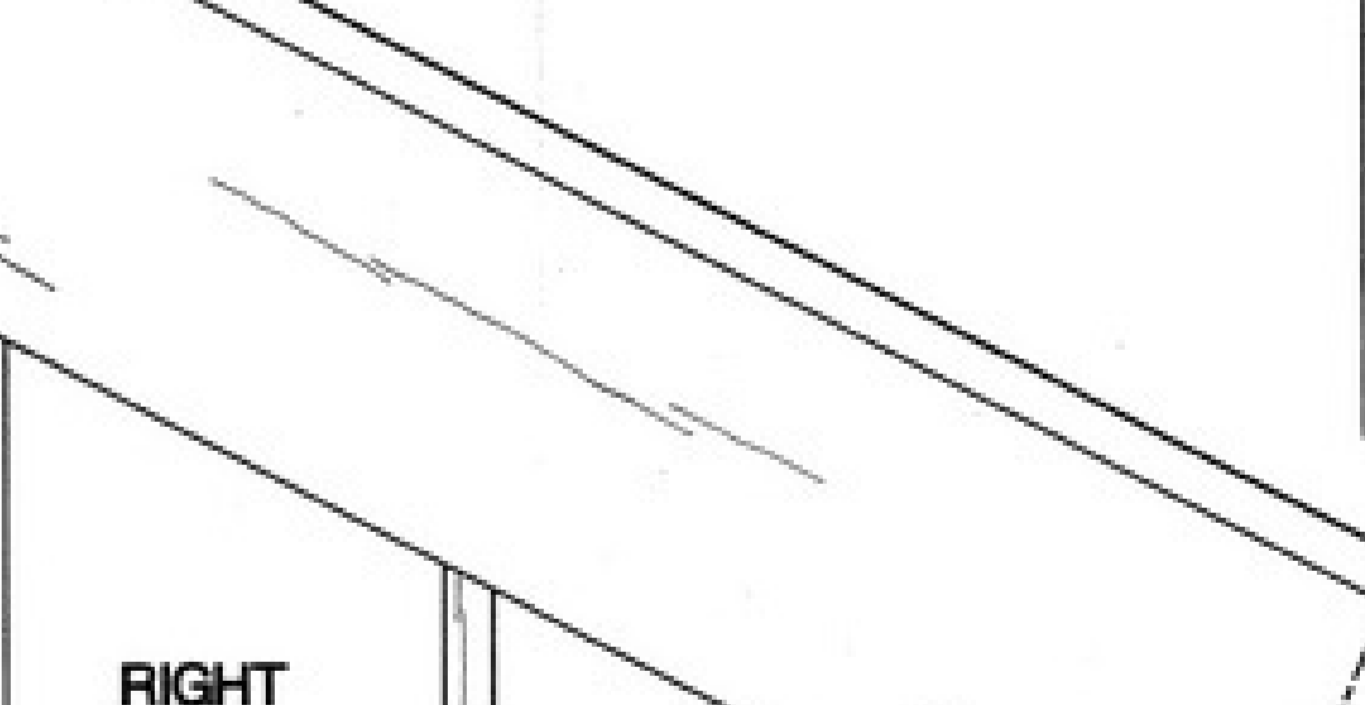
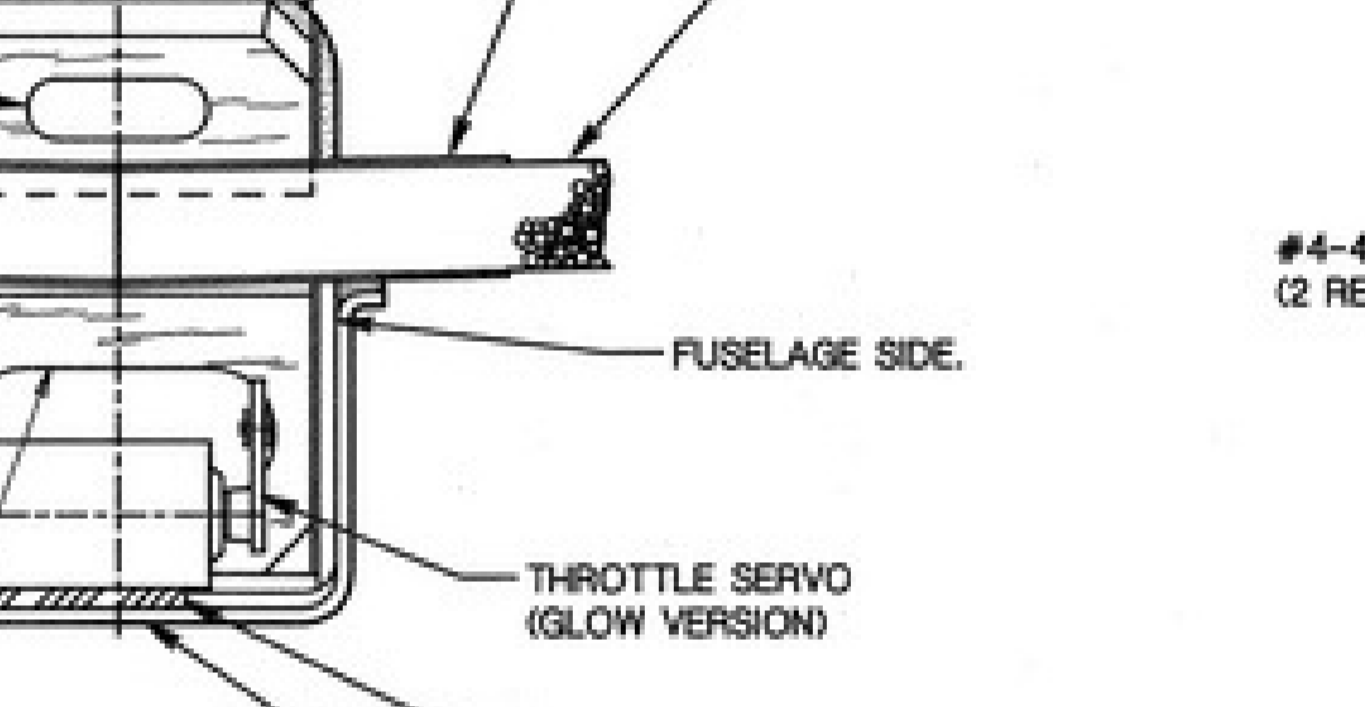
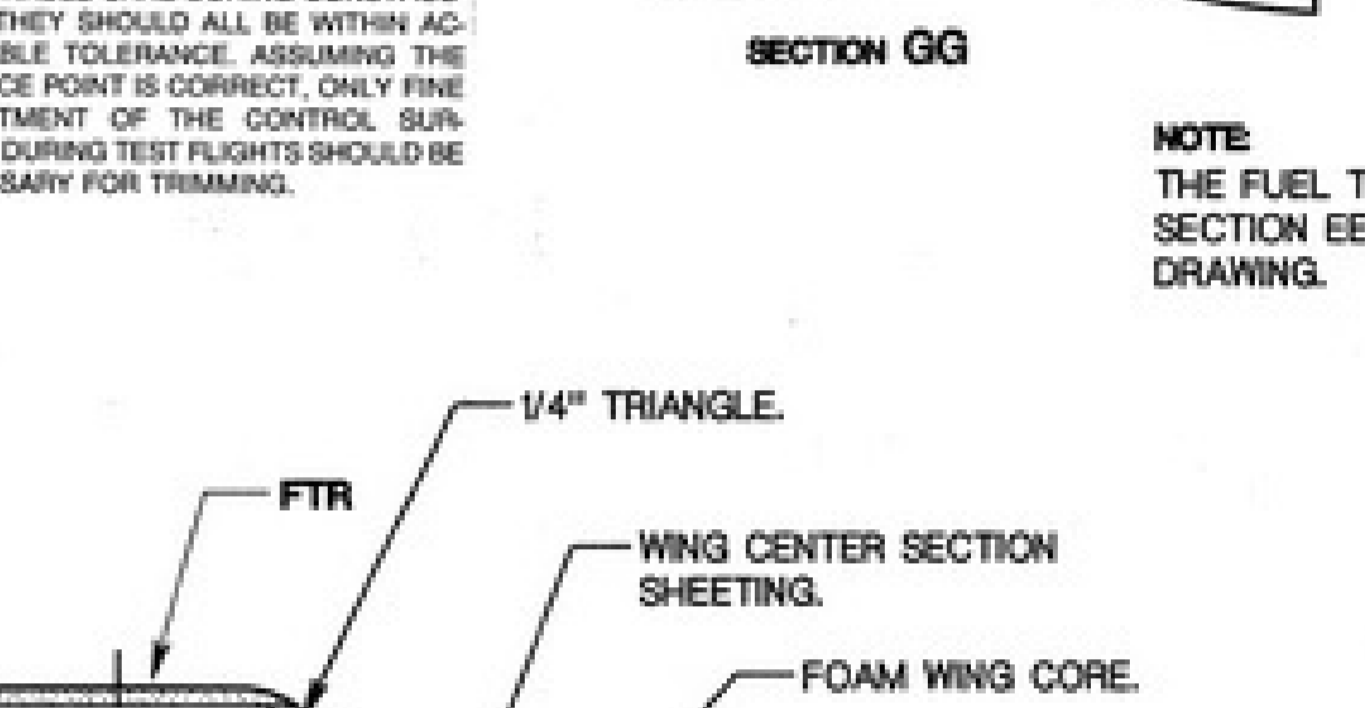
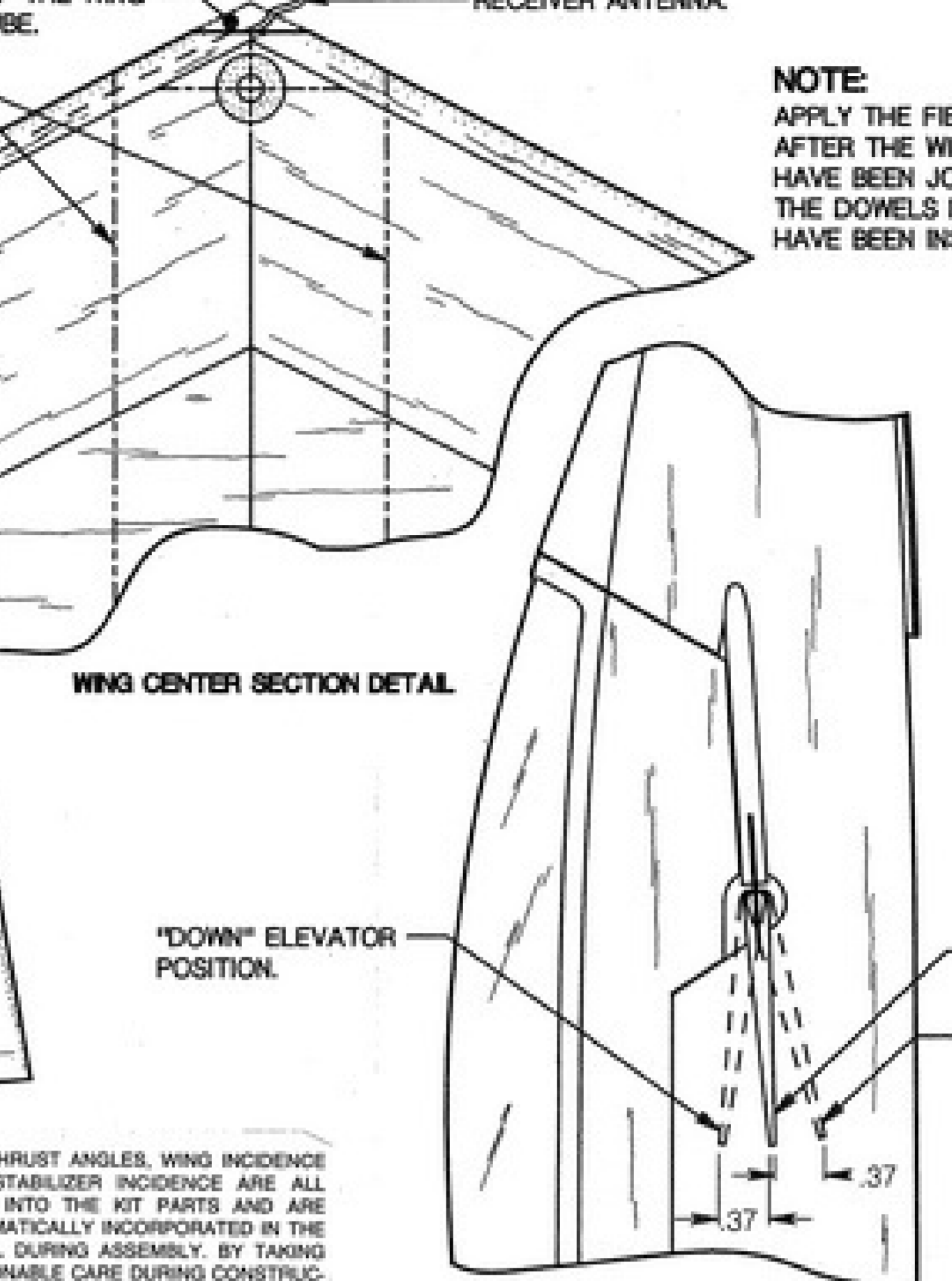
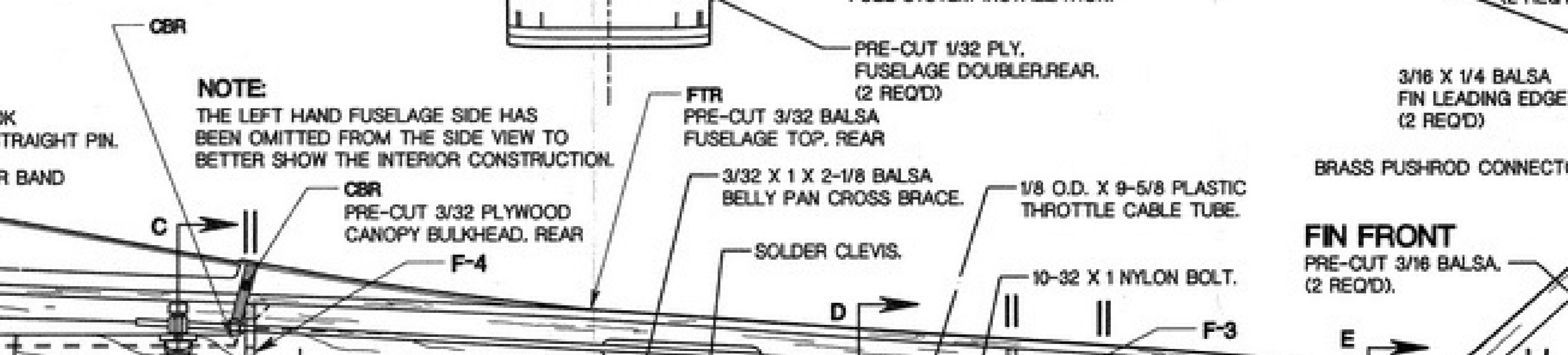
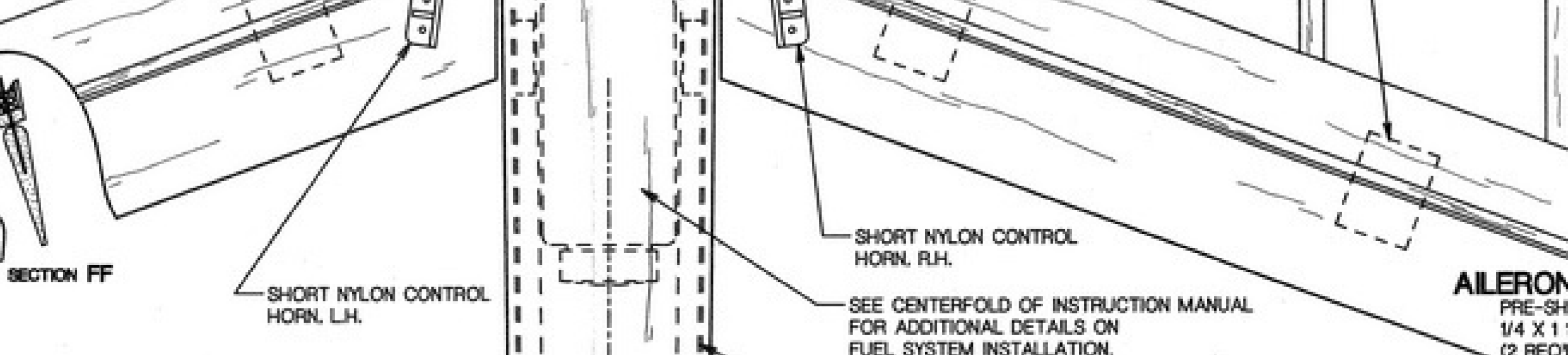
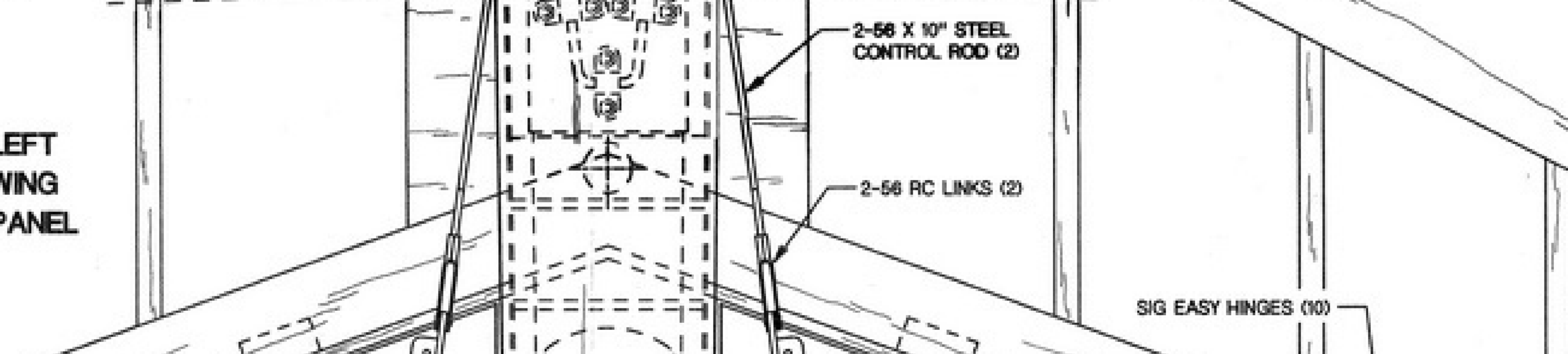
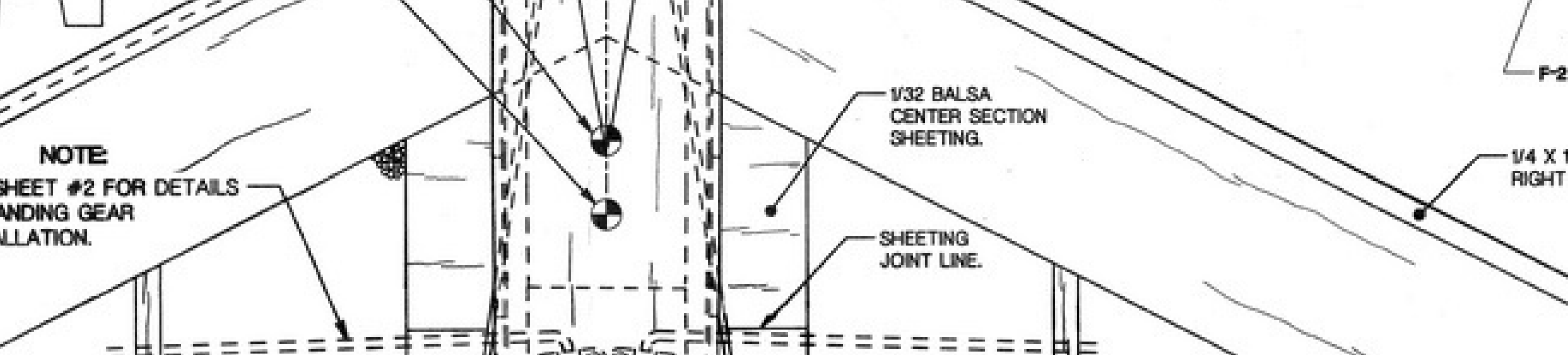
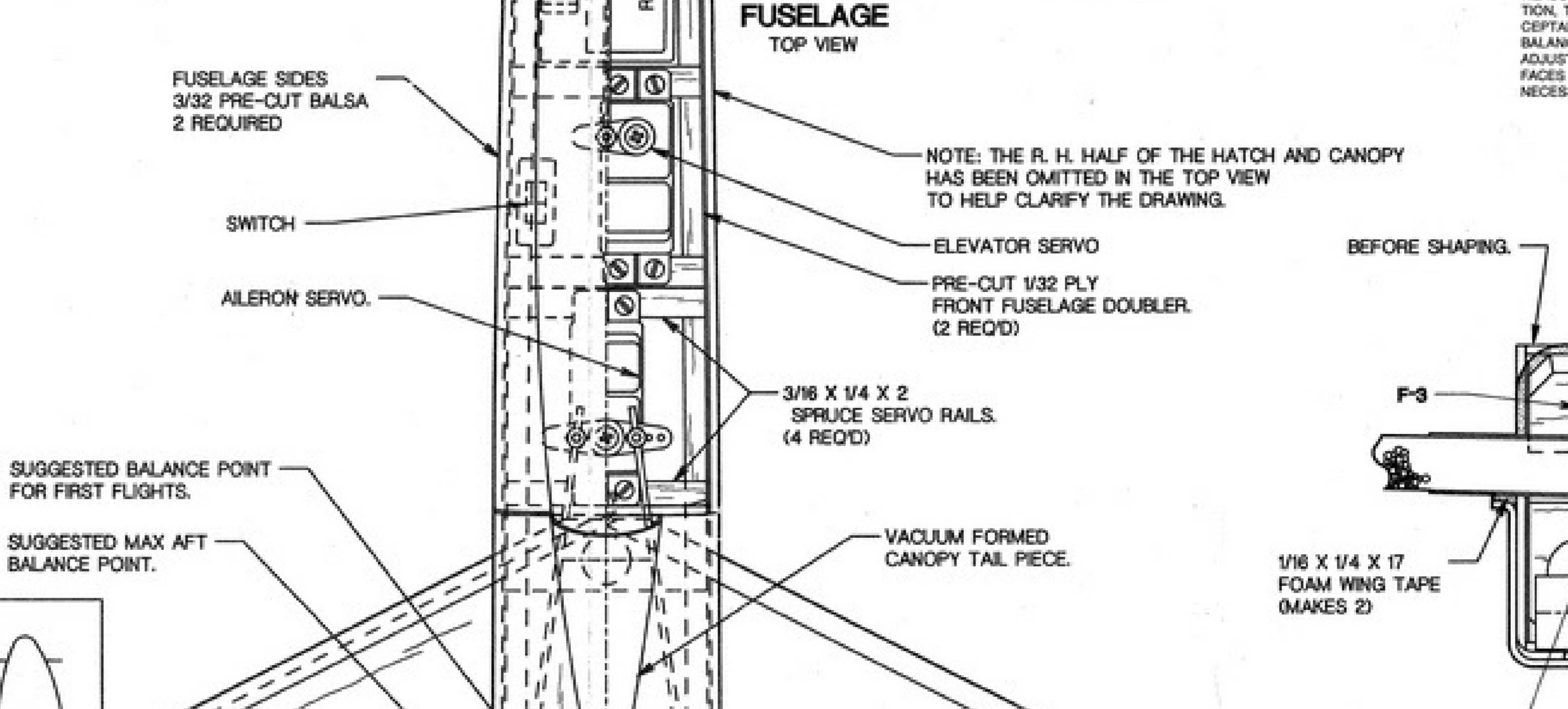
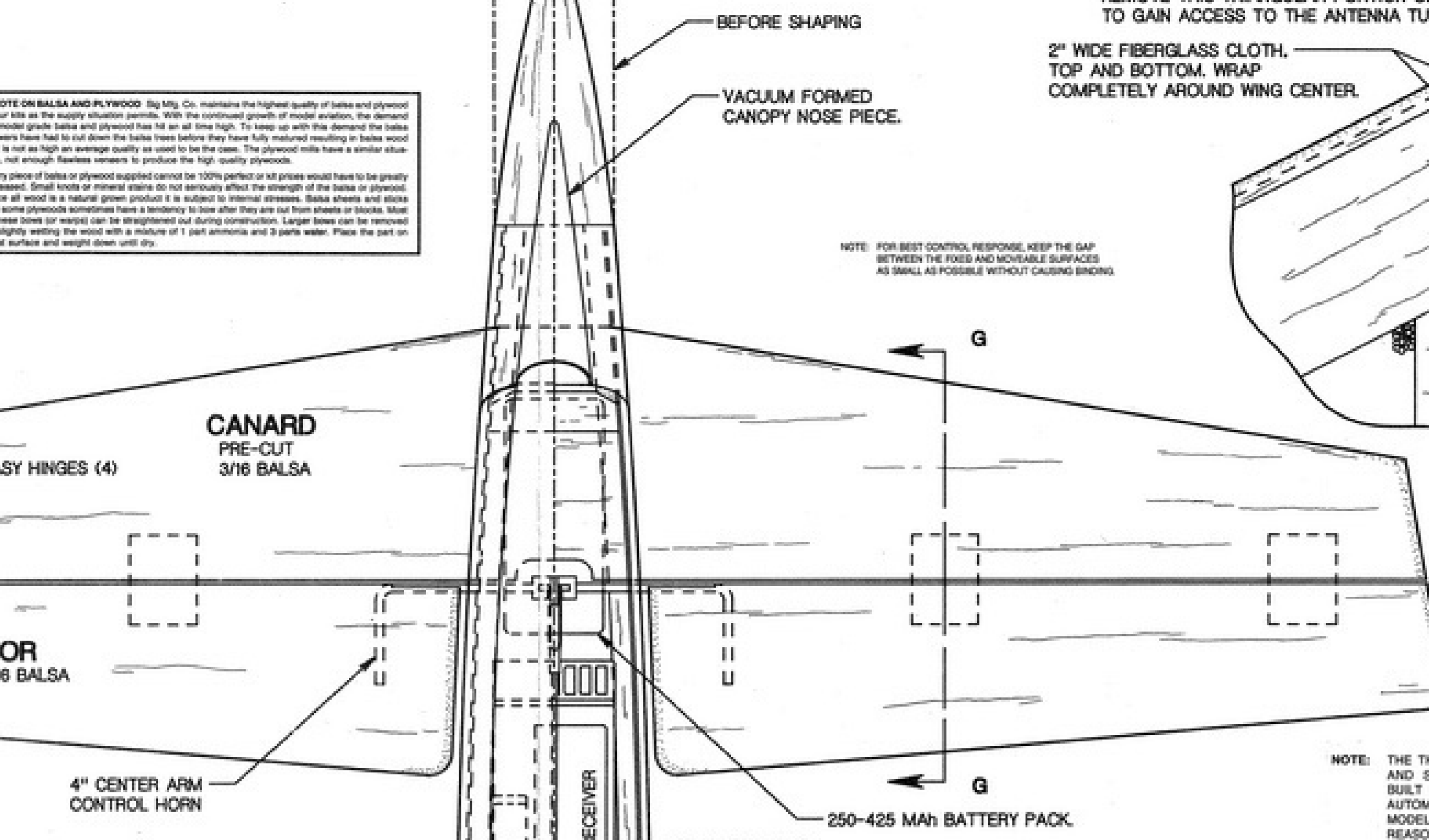
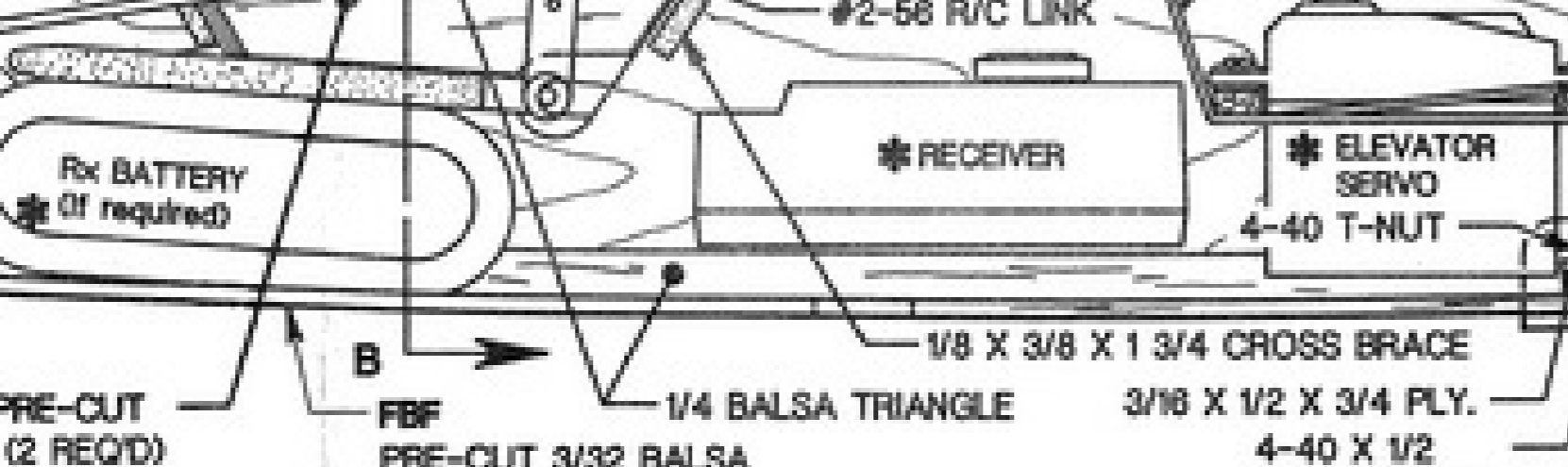
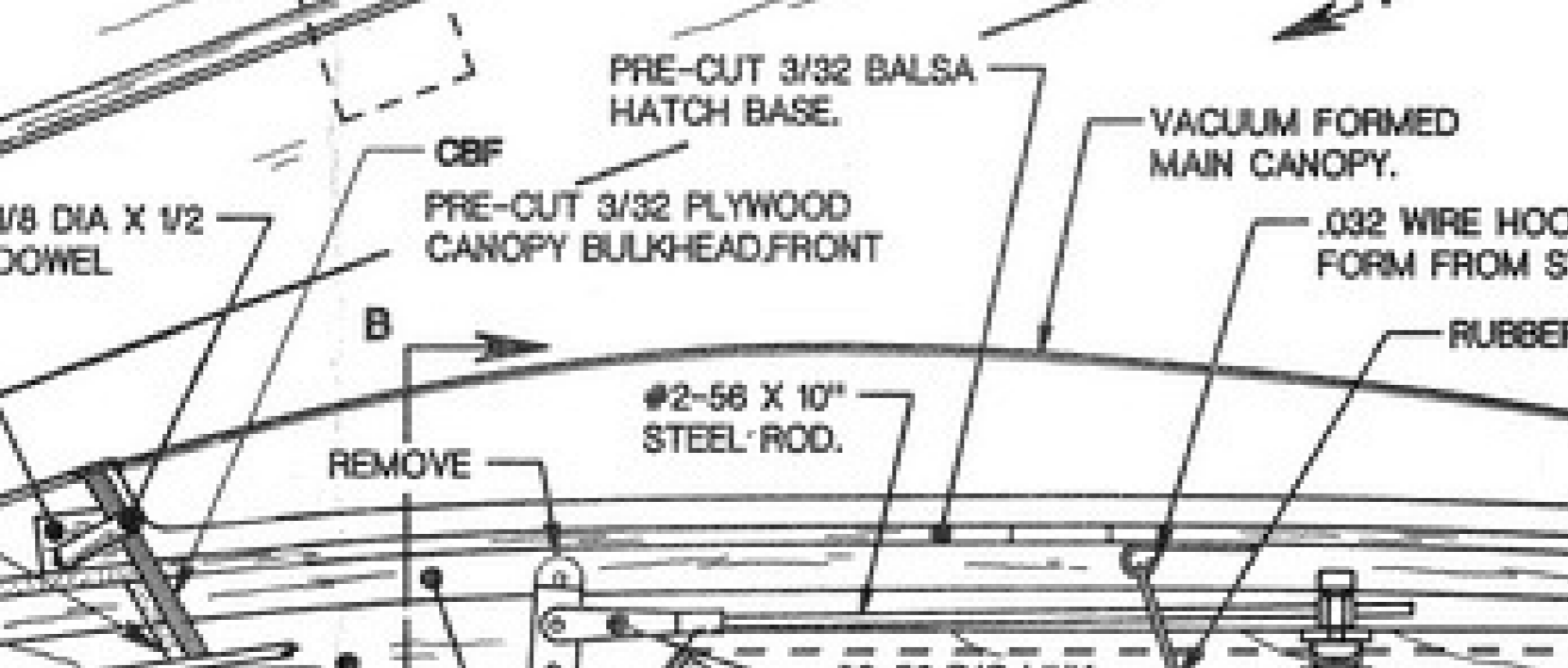
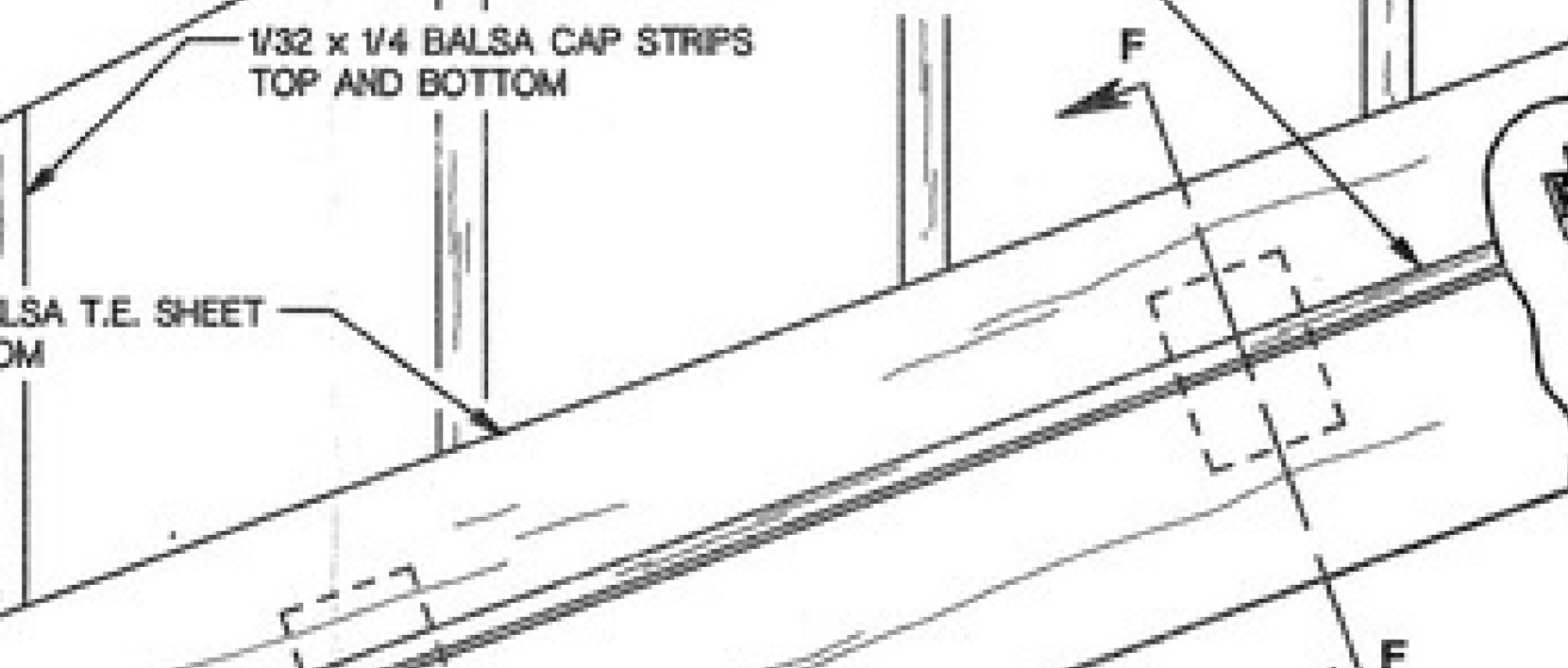
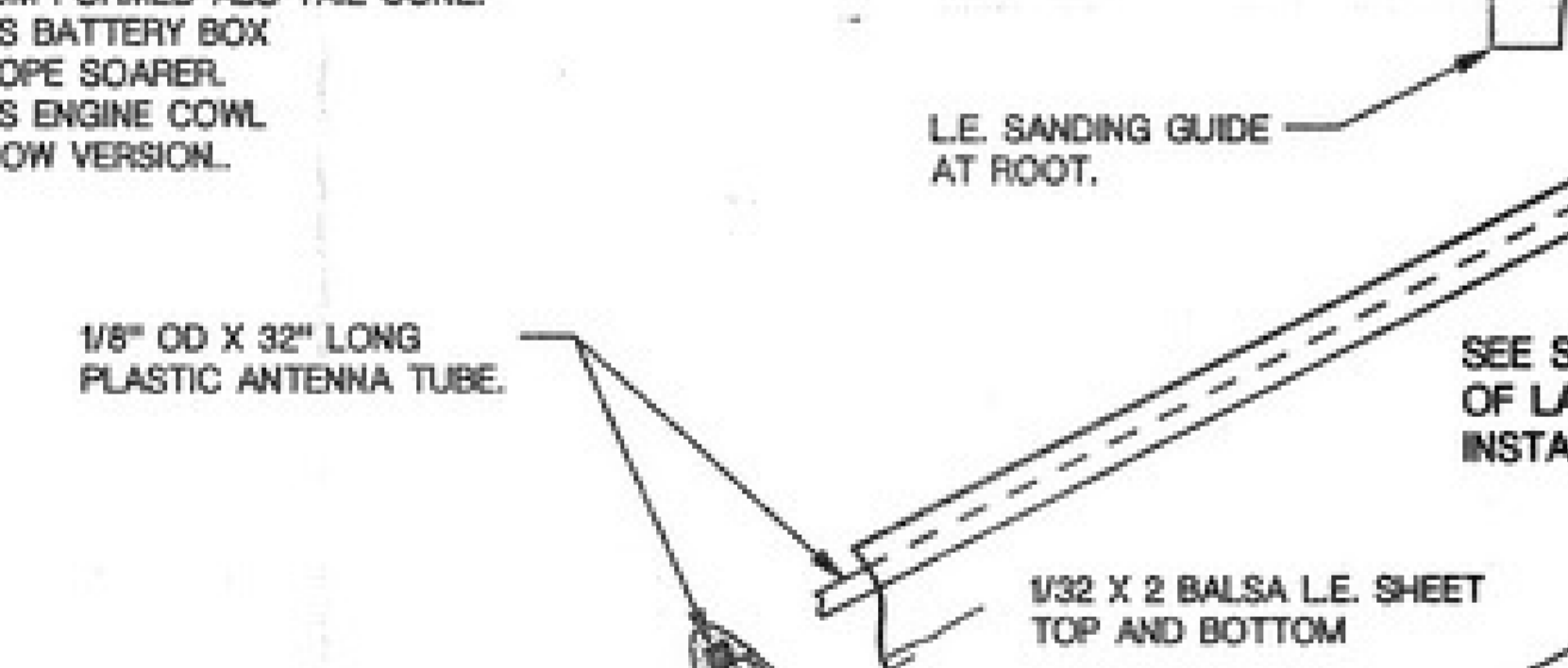
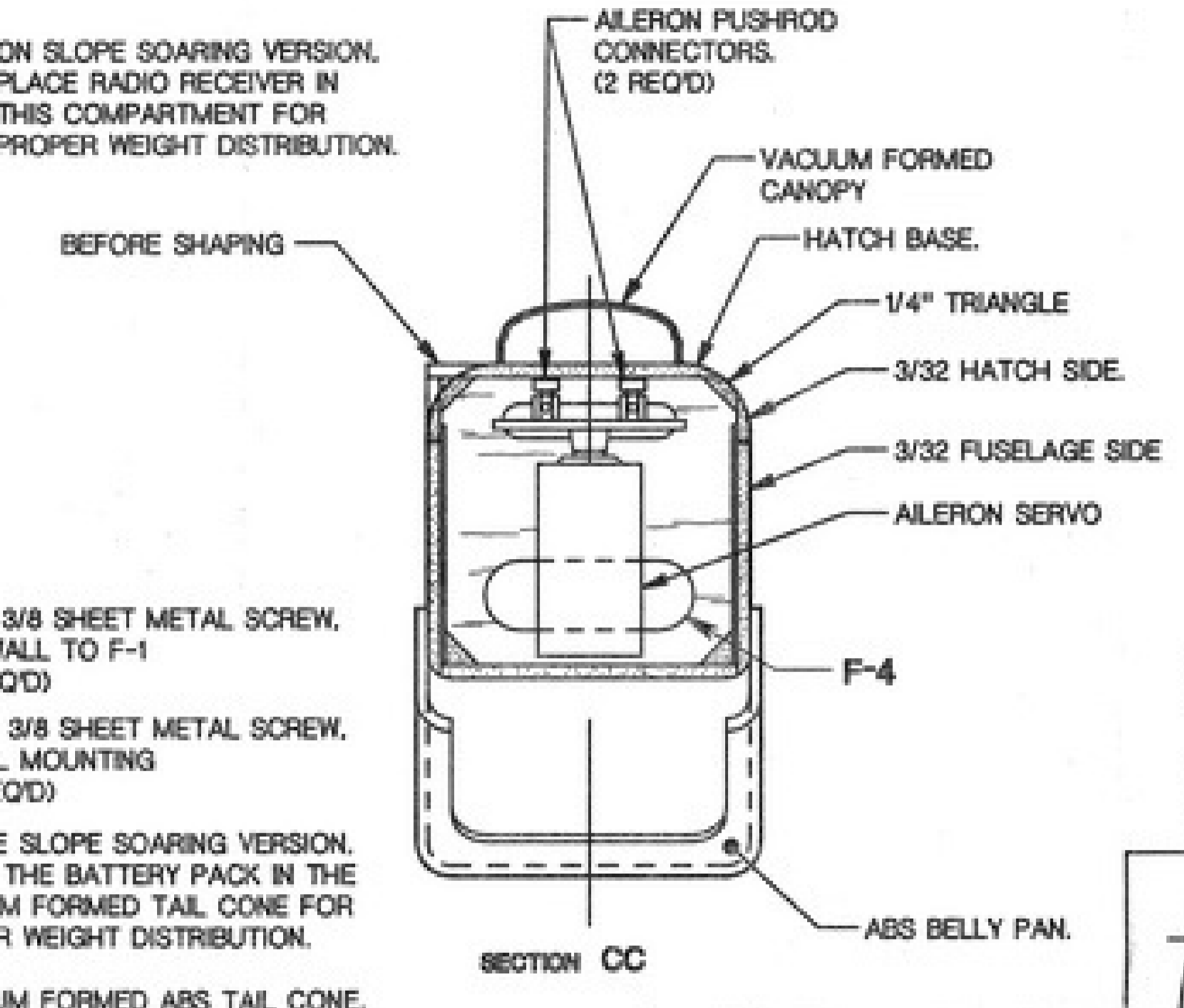
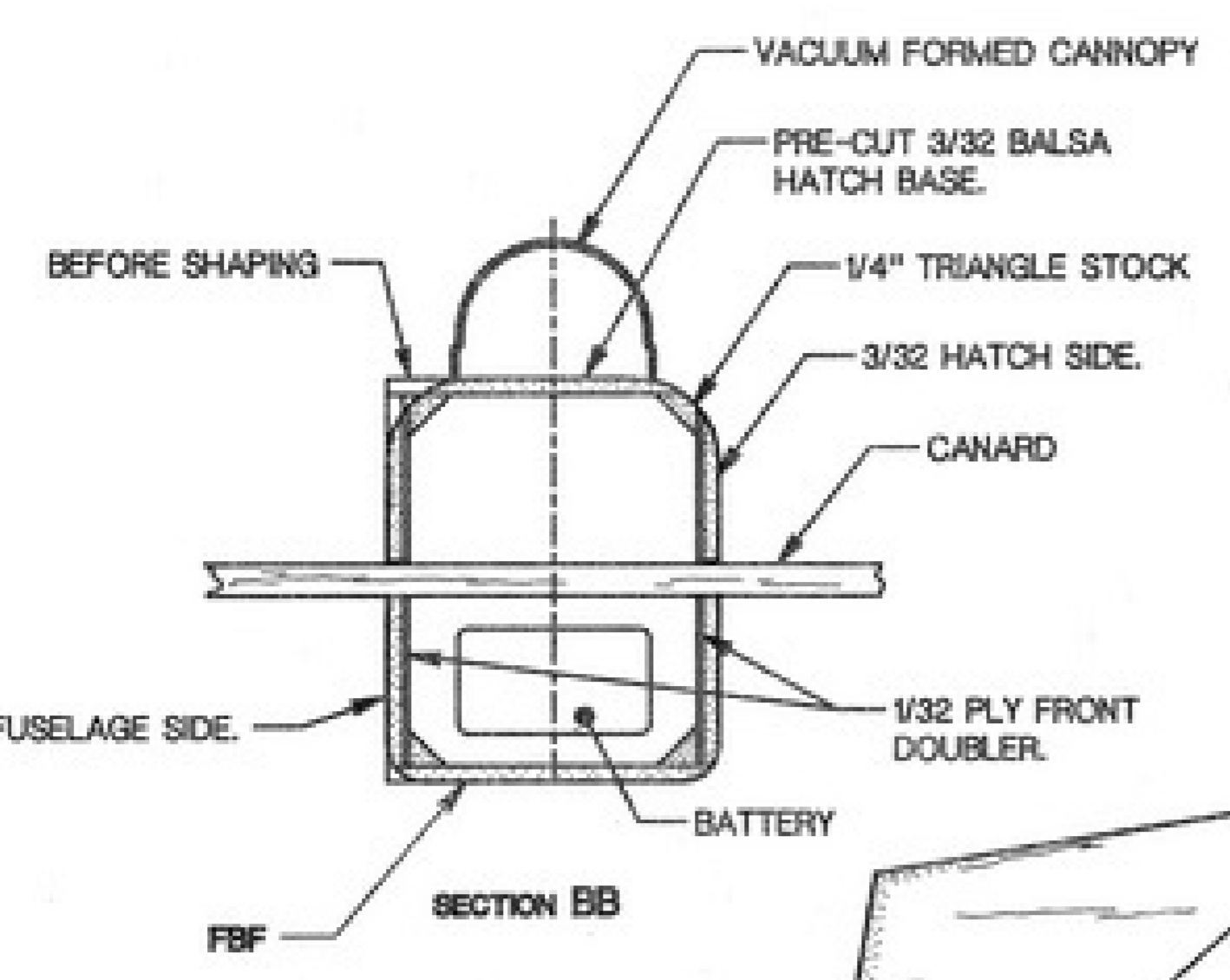


**LIMIT OF LIABILITY**  
 The manufacturer of this model airplane kit is not responsible for any damage or injury to persons or property resulting from the use of this model airplane kit. The user assumes all liability for the use of this model airplane kit.

**A NOTE ON Balsa and Plywood**  
 Buy the highest quality of balsa and plywood available in your area. The quality of the materials used in this model airplane kit is critical to its performance. The balsa should be well-dried and free of knots. The plywood should be a minimum of 1/8" thick and free of voids. Every piece of balsa or plywood used in this model airplane kit should be cut to size and sanded smooth. Do not use any other materials for the fuselage, wings, or tail. The use of other materials may affect the performance of the model airplane.



**NOTE:** APPLY THE FIBERGLASS CLOTH AFTER THE WING HALVES HAVE BEEN JOINED AND THE DOWELS FOR THE BOLTS HAVE BEEN INSTALLED.

**NOTE:** THE FIBERGLASS CLOTH SHOULD BE APPLIED SLIGHTLY WITH CHANGES IN TEMPERATURE AND HUMIDITY. IF A BUBBLE OR BLEMISH FORMS IN THE FIBERGLASS CLOTH, THIS IS PROBABLY THE CAUSE. SINCE THE PARTS ARE LASER CUT FROM THE MASTER COMPUTER FILES...

**NOTE:** THE THRUST ANGLE, WING INCIDENCE AND STABILIZER INCIDENCE ARE ALL BUILT INTO THE KIT PARTS AND ARE AUTOMATICALLY INCORPORATED IN THE MODEL DURING ASSEMBLY. BY TAKING REASONABLE CARE DURING CONSTRUCTION, THEY SHOULD ALL BE WITHIN ACCEPTABLE TOLERANCE. ASSUMING THE BALANCE POINT IS CORRECT, ONLY FINE ADJUSTMENT OF THE CONTROL SURFACES DURING TEST FLIGHTS SHOULD BE NECESSARY FOR TRIMMING.

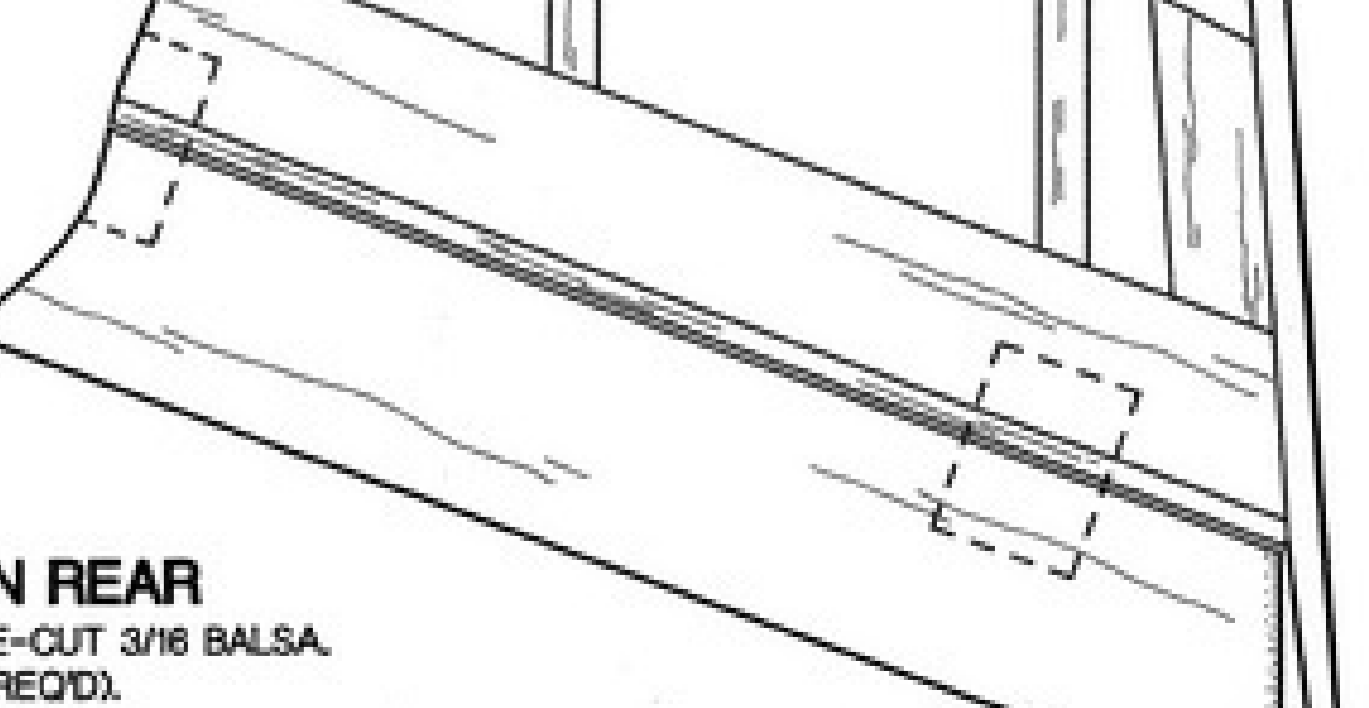
**NOTE:** THE FUEL TANK IS NOT SHOWN IN SECTION EE, TO CLARIFY THE DRAWING.

**WARNING - DANGER!**  
 Important: Read These Warnings:  
 A model airplane motor gets very hot and can cause serious burns. Do not touch the motor during or after operation. Read clear of the propeller. It can catch on finger or cut an eye. Make sure the propeller is securely fastened in place and is not cracked. Model airplane fuel is flammable and poisonous. Take the same precautions while transporting and using it that you would with a can of gasoline or a fuel tank of a car. Remember that it is possible to lose control of a model airplane. Do not fly in locations where the model may hit people or damage property if loss of control occurs. Check your model and equipment regularly to insure it is in safe operating condition.

**TRI-STAR**  
 A TRIPLE THREAT SPORT MODEL FOR GLOW, SLOPE, OR ELECTRIC  
 DESIGNED AND DRAWN BY: LEROY SATTERLEE

WING SPAN: 47.5 in.	WING AREA: 420 sq in.	RECOMMENDED POWER: 09 -15 2-Stroke Engine
LENGTH: 35 in.	WEIGHT: 29-44 oz.	05 Electric

IN ANY CONFLICT BETWEEN THE PLAN AND THE BOOKLET, FOLLOW THE BOOKLET INSTRUCTIONS. THEY ARE REVISED MORE FREQUENTLY THAN THE PLAN.



**SIG CRAFTSMAN'S KIT**  
 KIT NO. RC-70