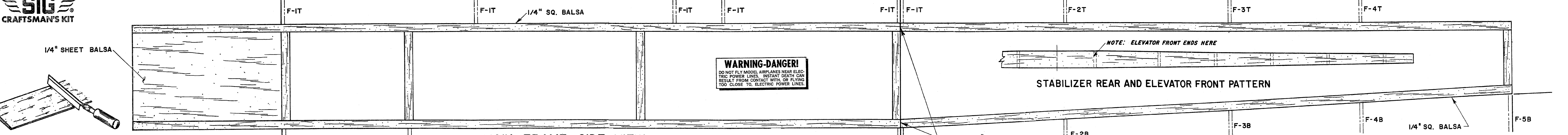
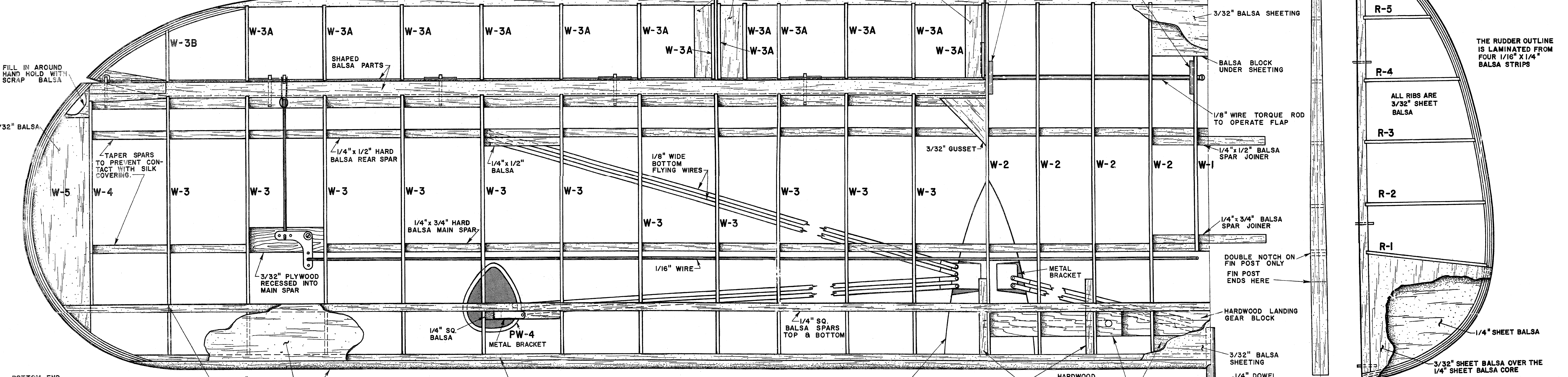
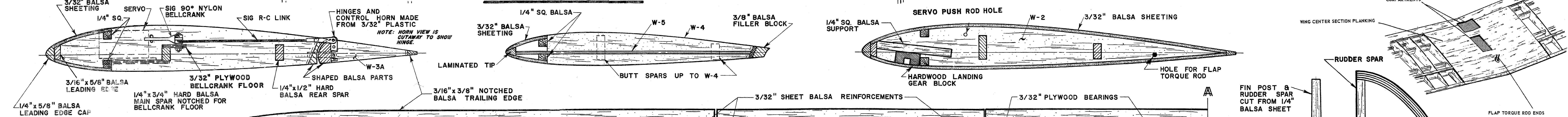


WARNING-DANGER!
DO NOT FLY MODEL AIRPLANES NEAR ELECTRIC POWER LINES. INSTANT DEATH CAN RESULT FROM CONTACT WITH, OR FLYING TOO CLOSE TO, ELECTRIC POWER LINES.

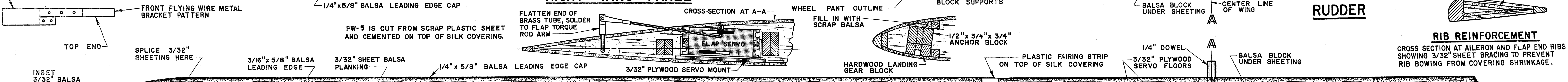
NOTE: ELEVATOR FRONT ENDS HERE



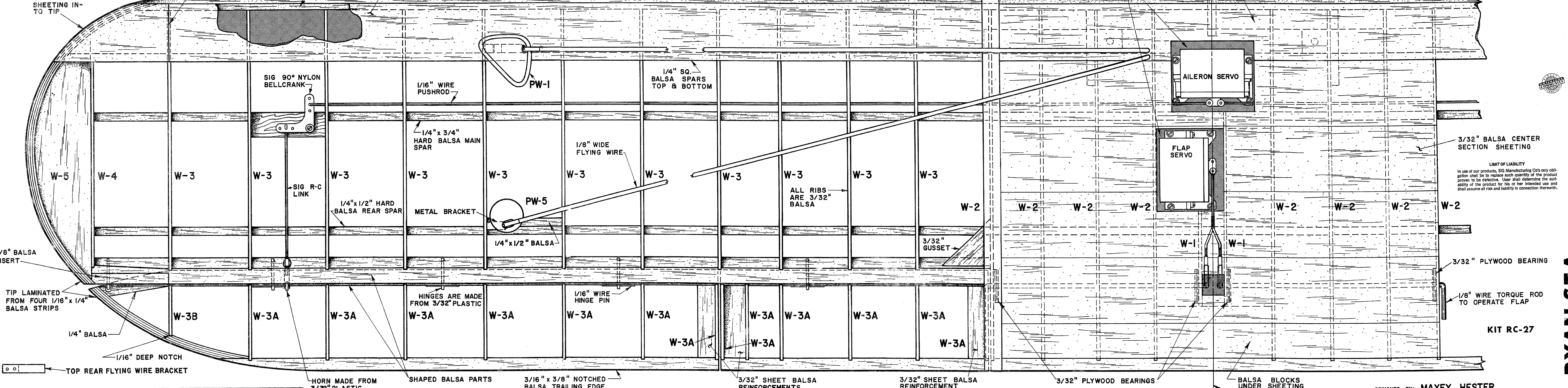
MAIN FRAME SIDE VIEW



RIGHT WING PANEL



RUDDER



LEFT WING PANEL

NOTE: CUT FLYING WIRE BRACKETS TO EXACT LENGTH AFTER INSTALLATION. DRILL HOLES FOR FLYING WIRES WHILE FITTING WIRES AND PLASTIC COVERS.

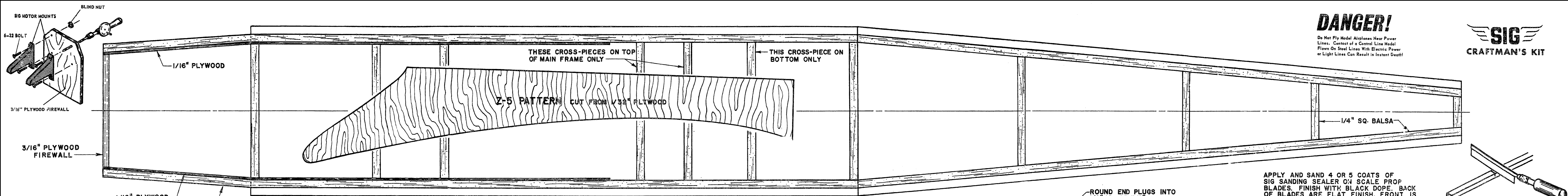
LIMIT OF LIABILITY
In use of our products, SIG Manufacturing Co.'s only obligation shall be to replace such quantity of the product shown to be defective. User shall determine the suitability of the product for his or her intended use and shall assume all risk and liability in connection therewith.

KIT RC-27

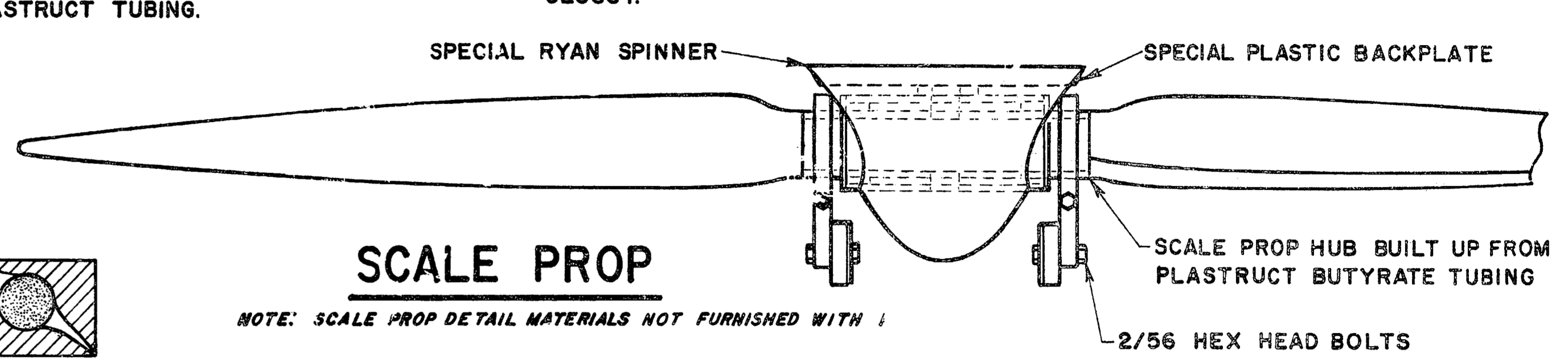
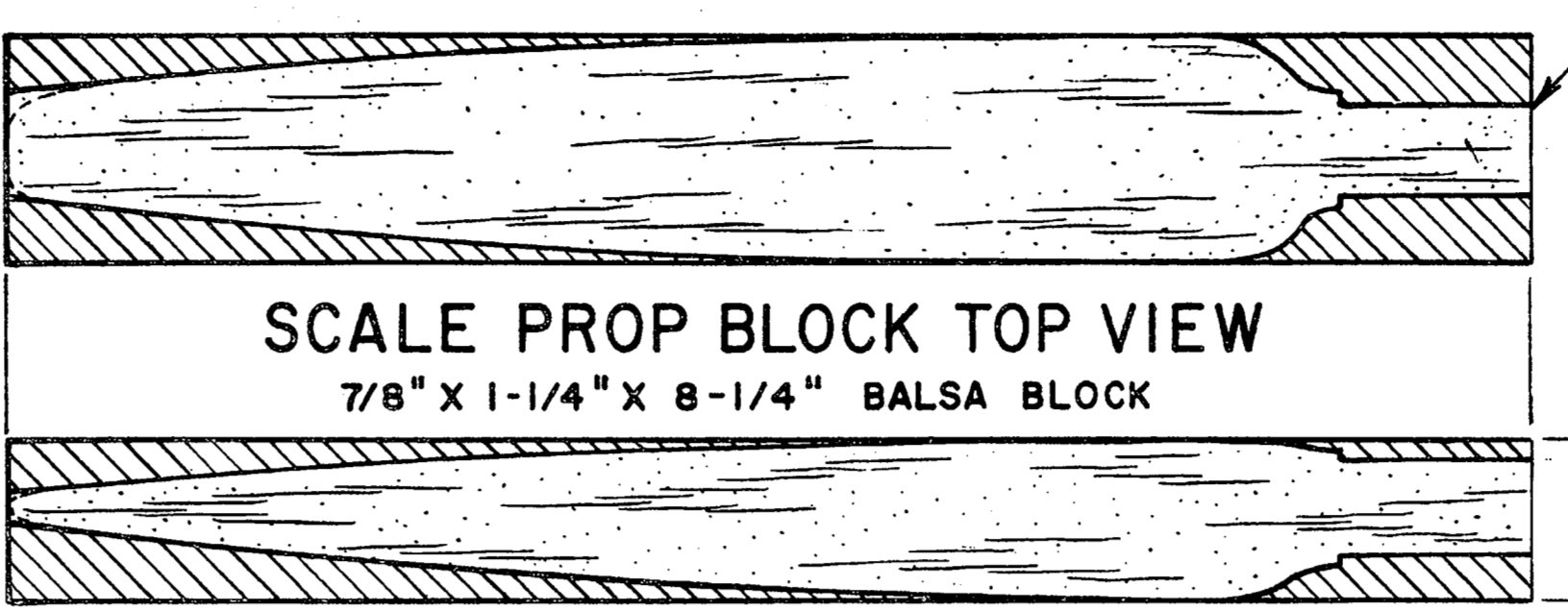
DANGER!

Do Not Fly Model Airplanes Near Power Lines. Contact of a Control Line Model Plane On Steel Lines With Electric Power or Light Lines Can Result in Instant Death!

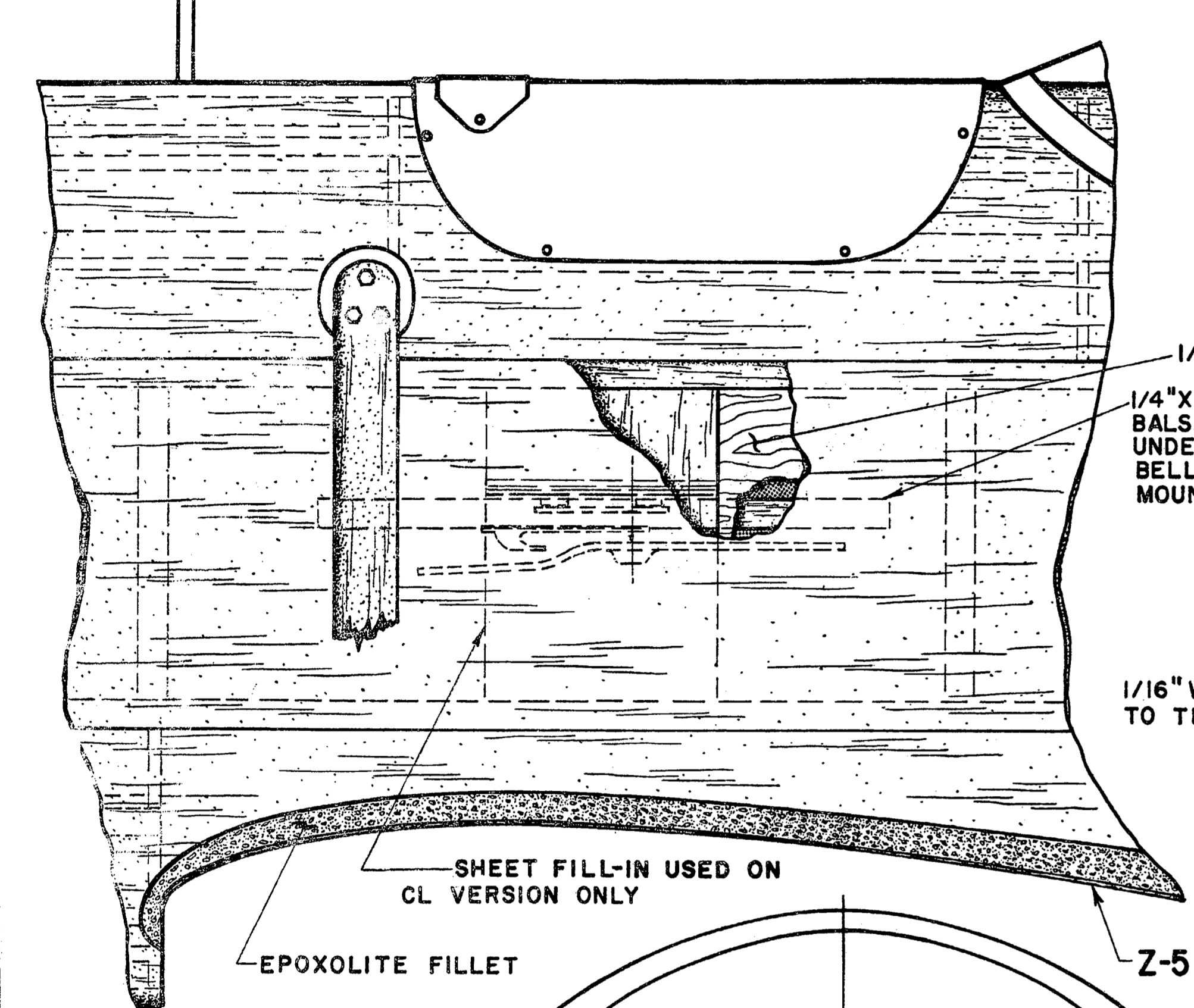
SIG
CRAFTMAN'S KIT



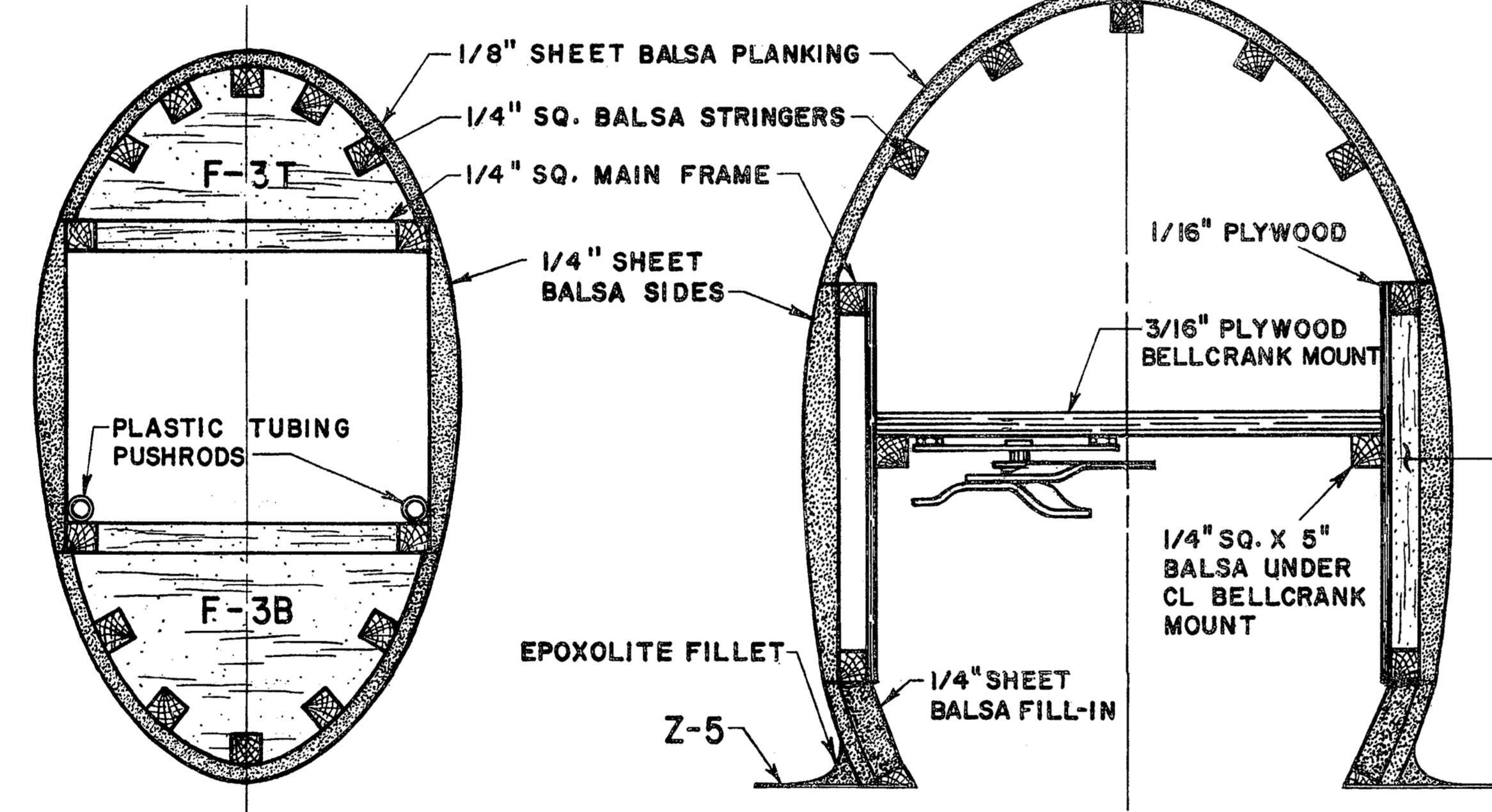
FUSELAGE MAIN FRAME TOP VIEW



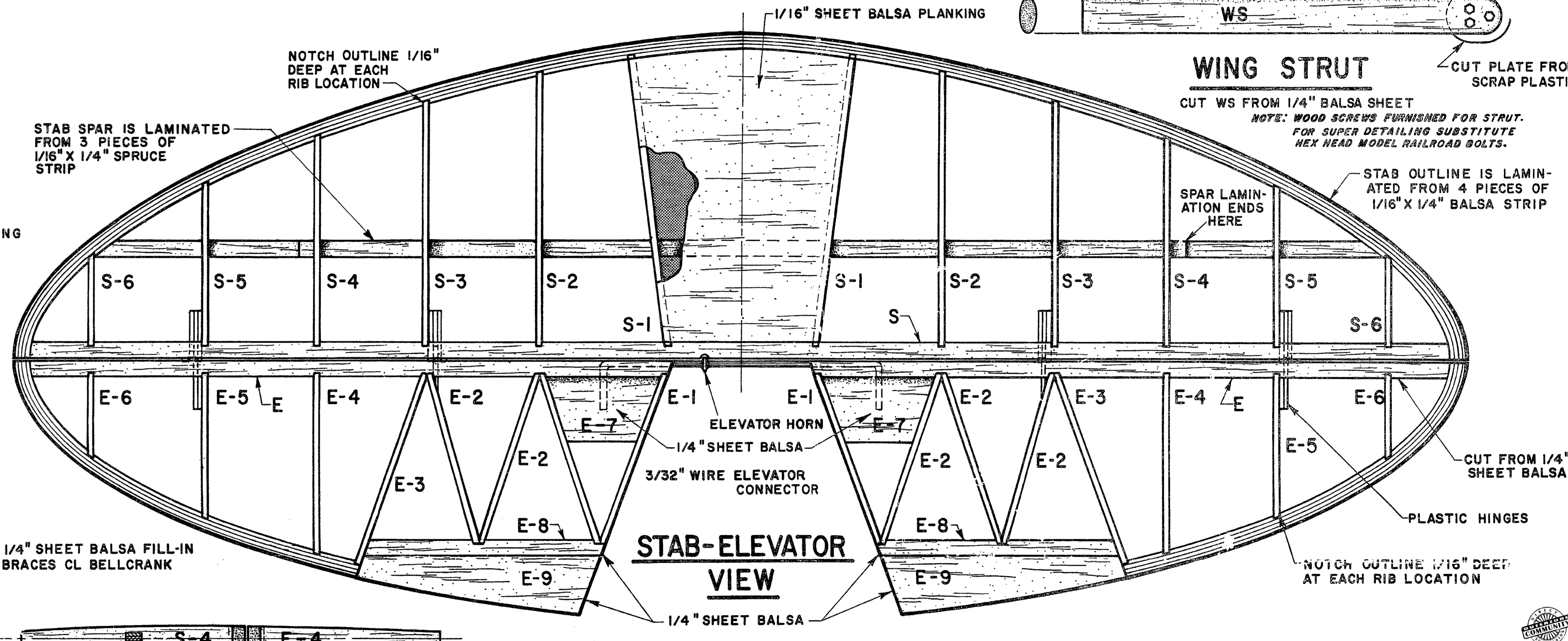
SCALE PROP



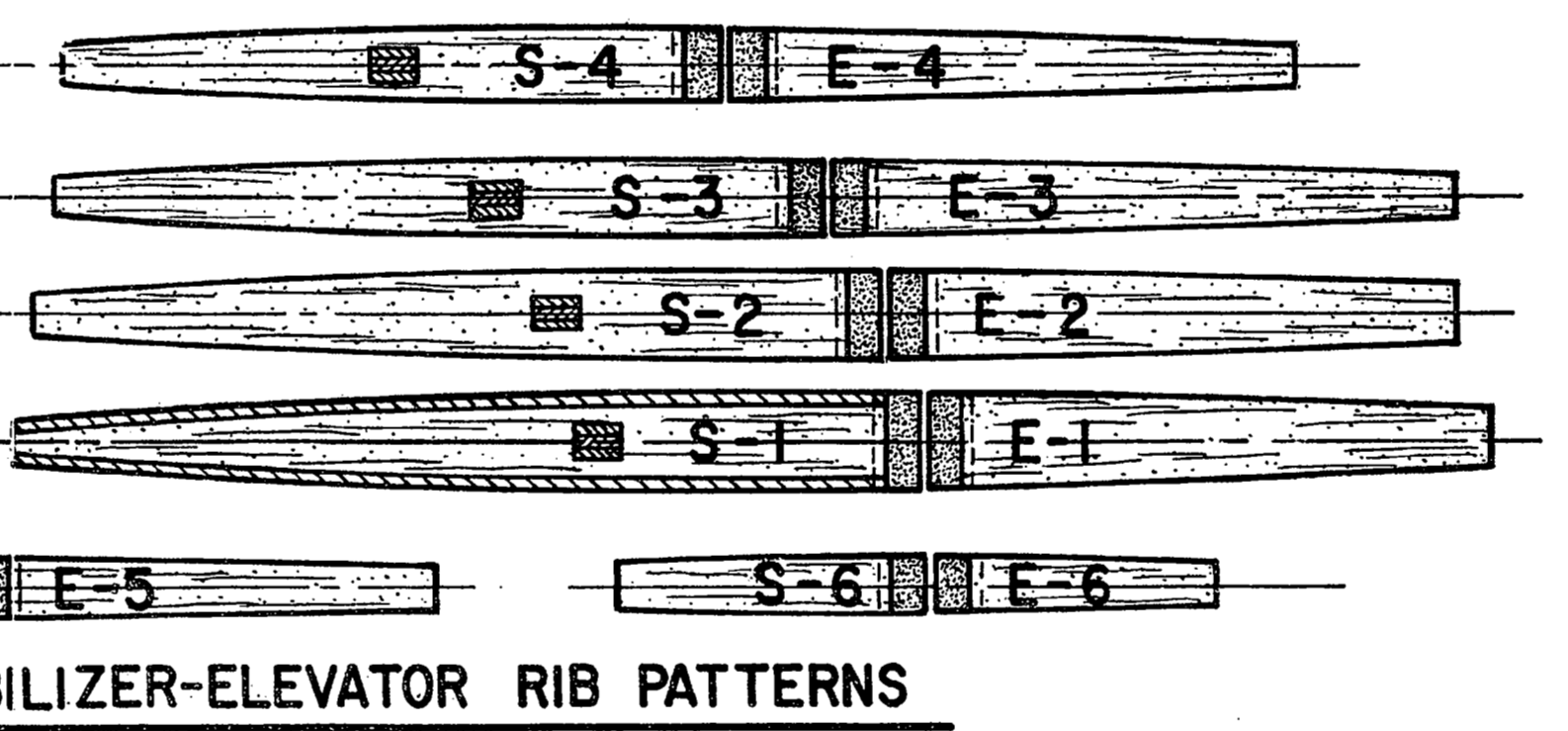
CL BELLCRANK INSTALLATION



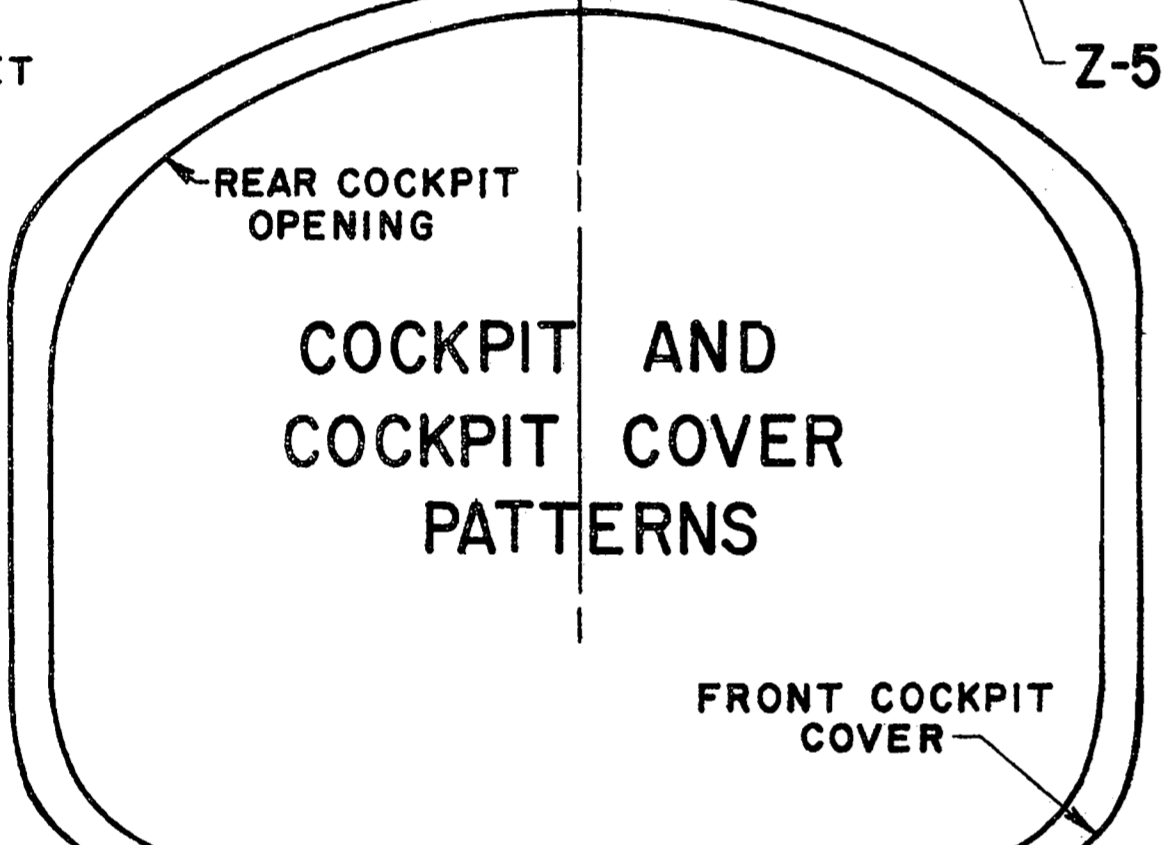
TYPICAL FUSELAGE CROSS SECTIONS



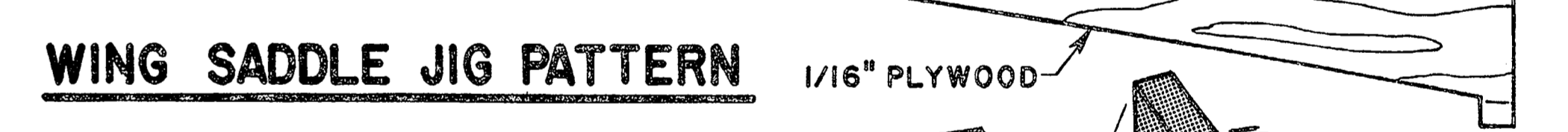
STAB-ELEVATOR VIEW



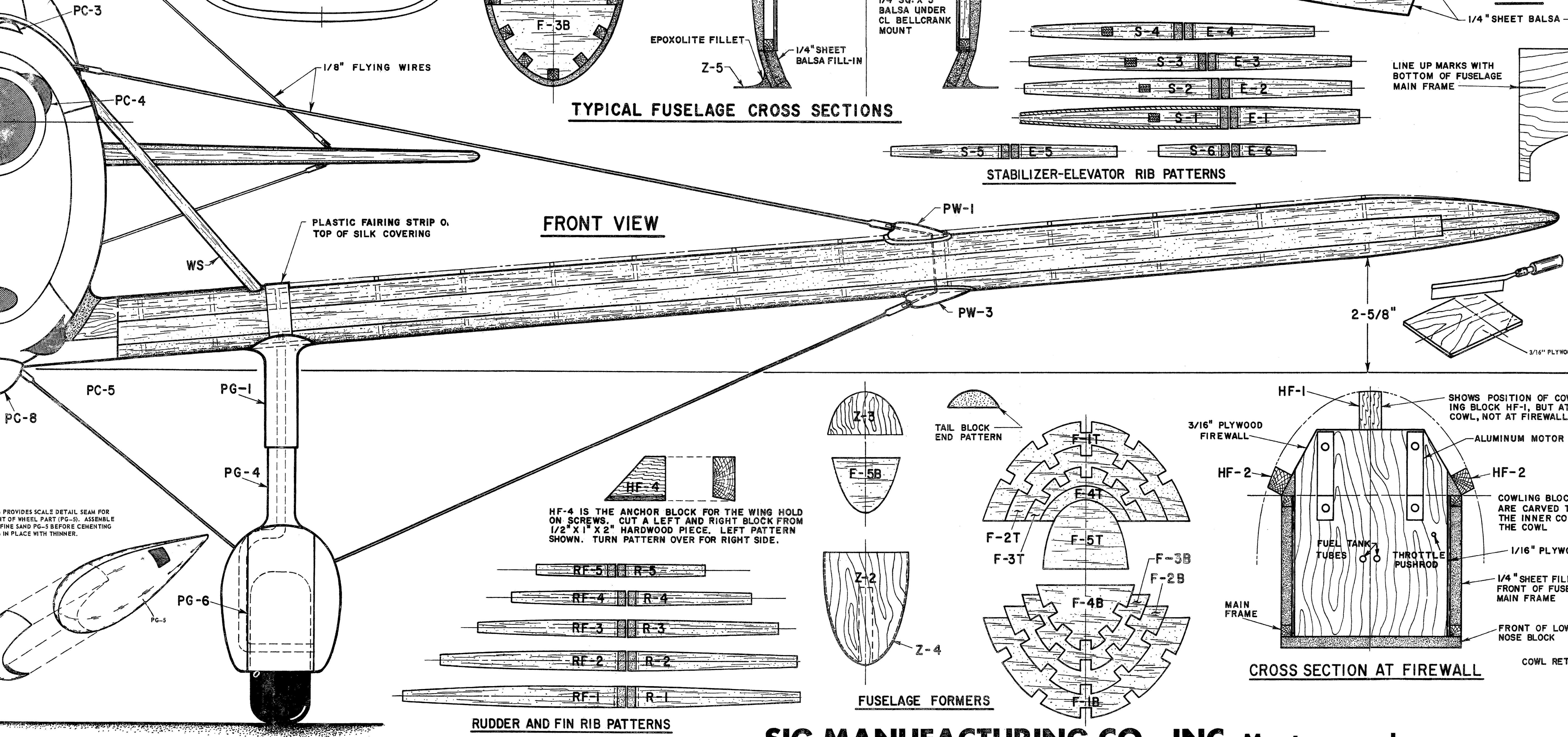
STABILIZER-ELEVATOR RIB PATTERNS



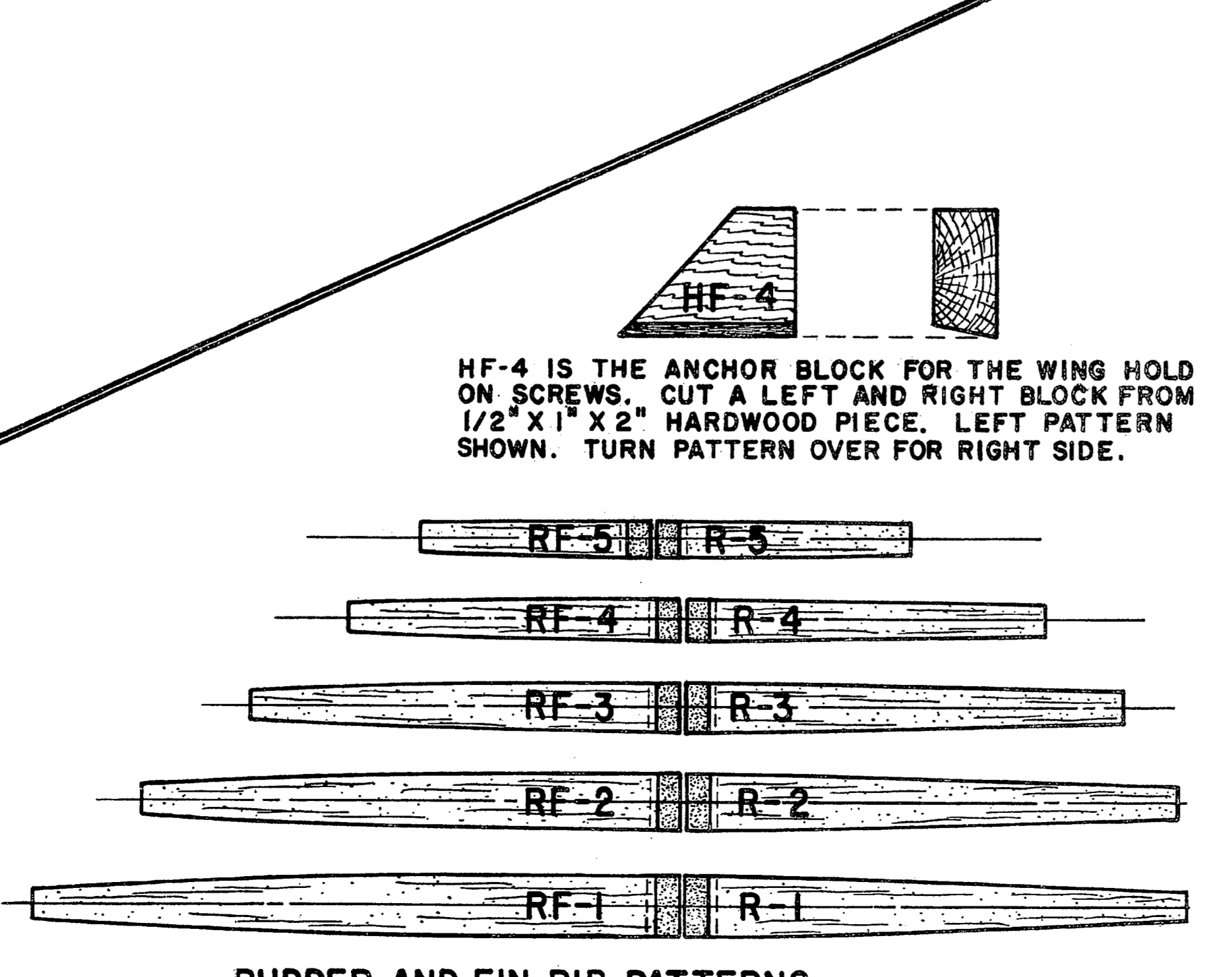
COCKPIT AND COCKPIT COVER PATTERNS



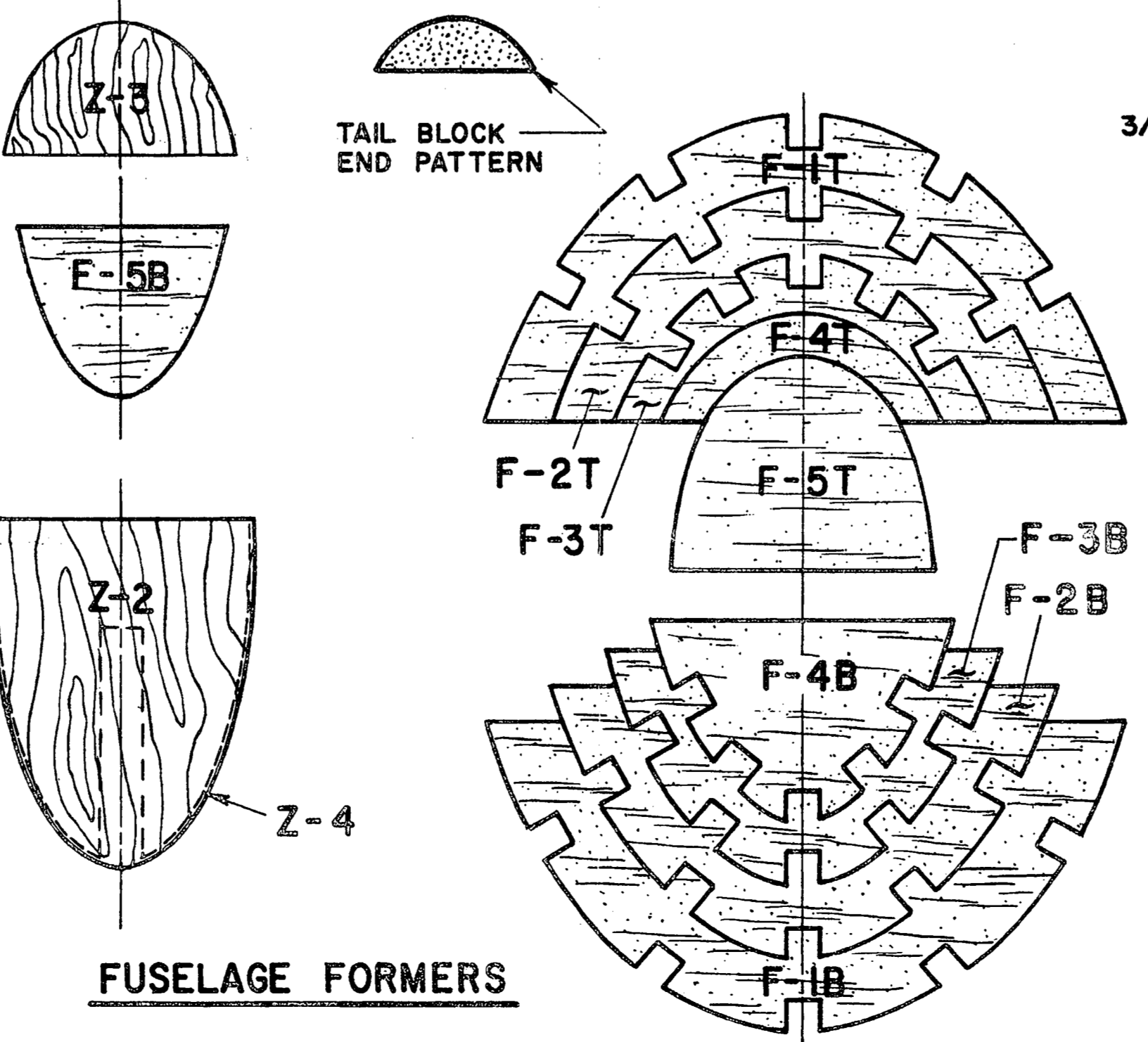
WING SADDLE JIG PATTERN



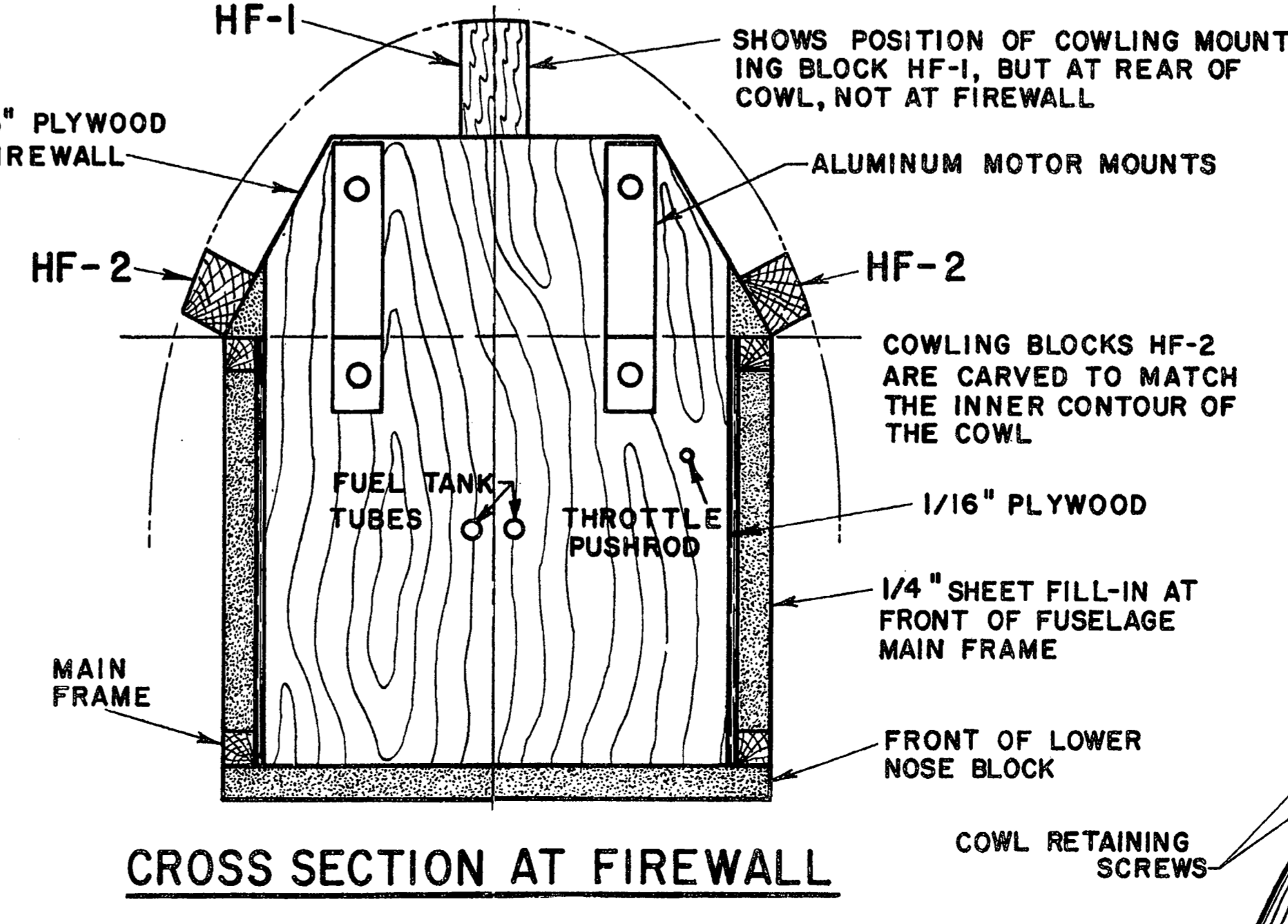
FRONT VIEW



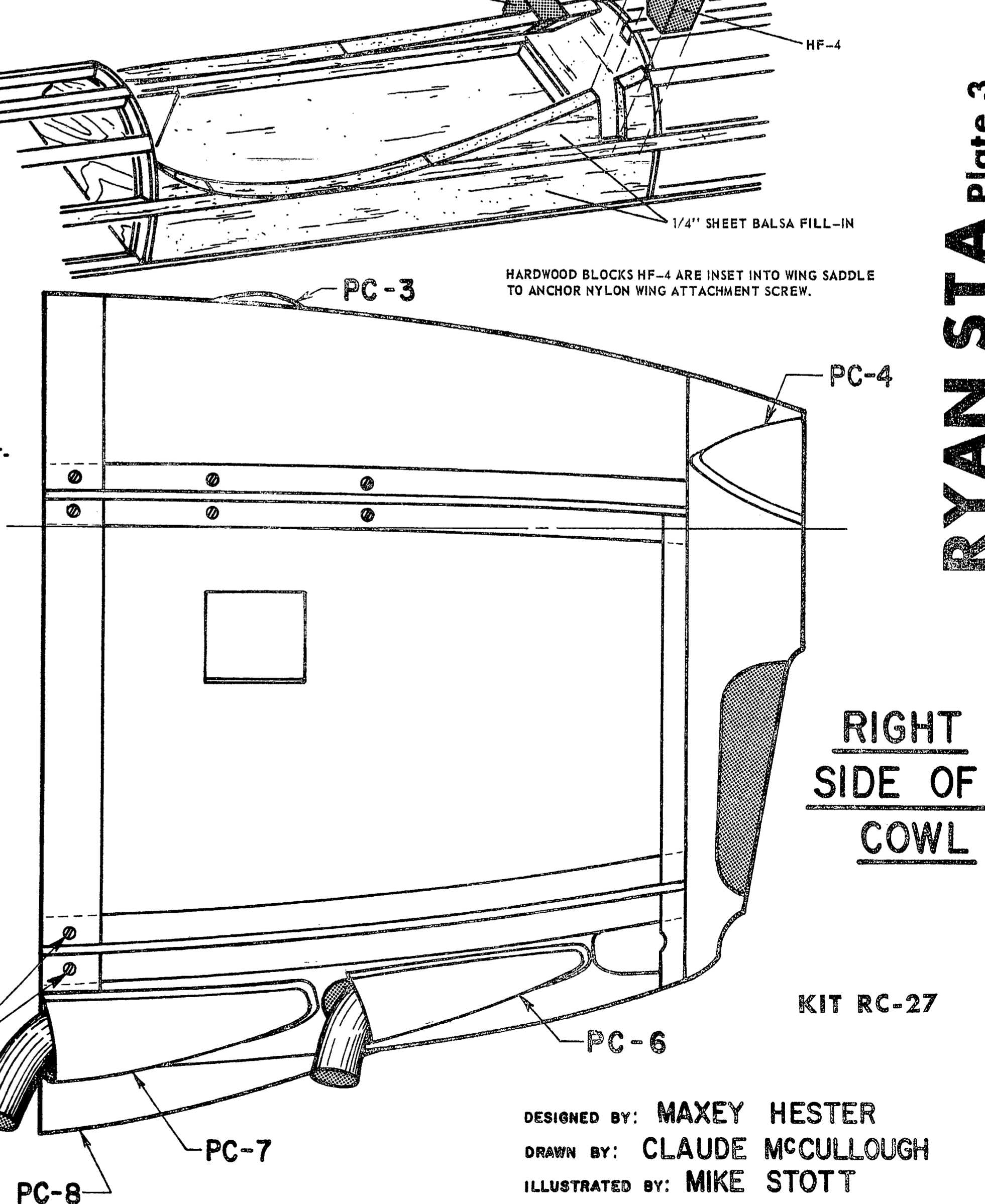
RUDDER AND FIN RIB PATTERNS



FUSELAGE FORMERS



CROSS SECTION AT FIREWALL



RIGHT SIDE OF COWL

SIG MANUFACTURING CO., INC. Montezuma, Iowa

DESIGNED BY: MAXEY HESTER
DRAWN BY: CLAUDE MCCULLOUGH
ILLUSTRATED BY: MIKE STOTT

COPYRIGHT 1971

RYAN STA Plate 3