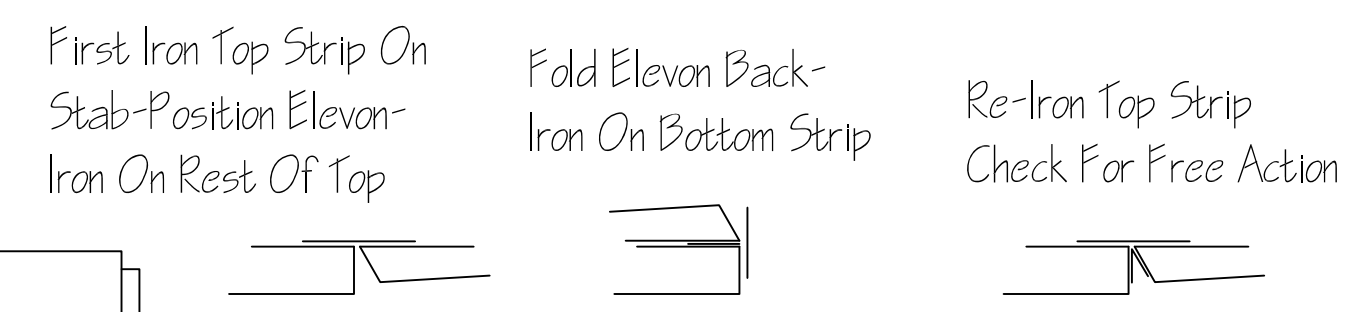


FORMER LAYOUTS

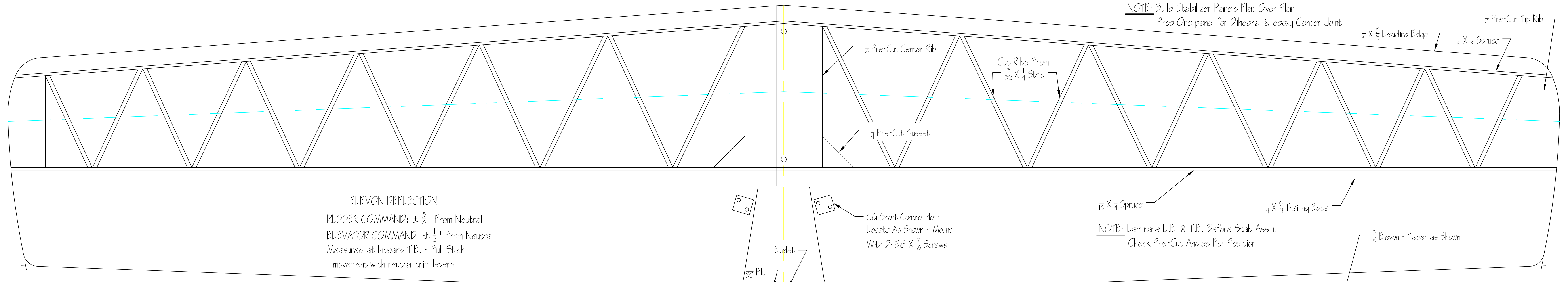
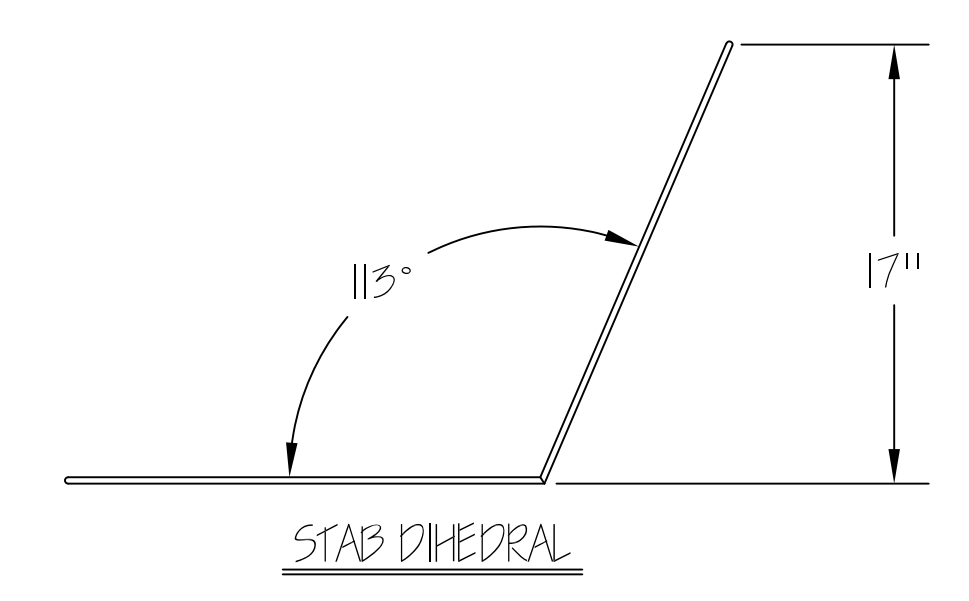
WE THANK THE FOLLOWING FRIENDS AND MODELERS THROUGHOUT THE UNITED STATES WHO PARTICIPATED IN THE DEVELOPMENT OF THIS KIT. THEIR HELP, TESTING, AND SUGGESTIONS HAVE MADE THE GRAND ESPRIT A THOROUGHbred R/C SAILPLANE.

Bill Anderson (who built and flew the first one)
 John Camp Denny Darnell Mike Fox Jack Josaitis
 Dale Nutter Bill O'Brien Gil Rifken John Simone
 Jim Simpson Bev Smith Fred Weaver

Special thanks to our Chief Test Pilot whose help & encouragement throughout the project have made this kit possible. His hours of testing the design and building and testing developmental changes have been invaluable. Thanks Bill Davidson with great appreciation Lee Renaud

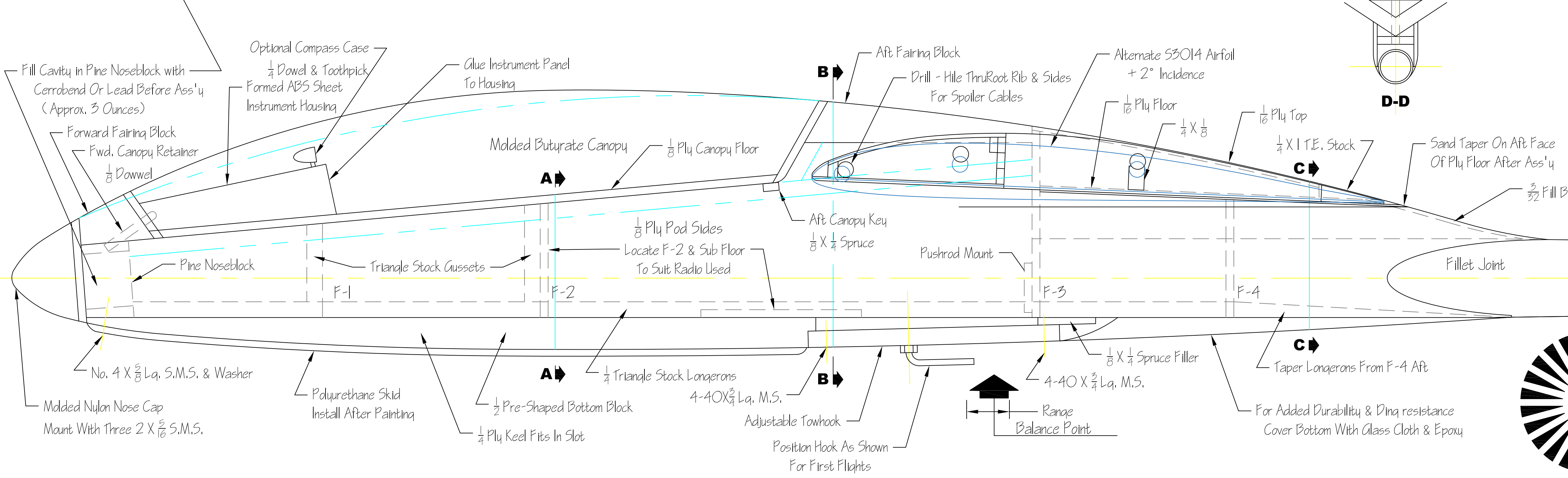
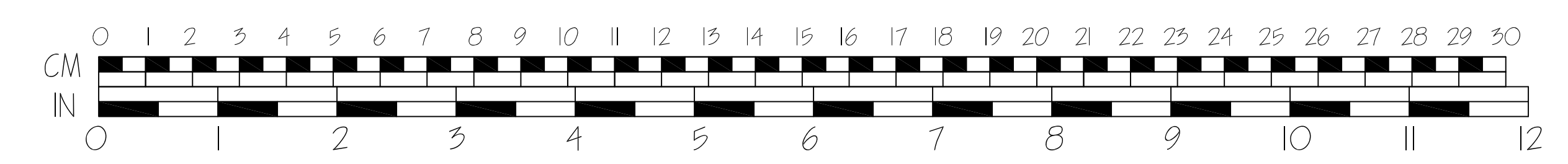
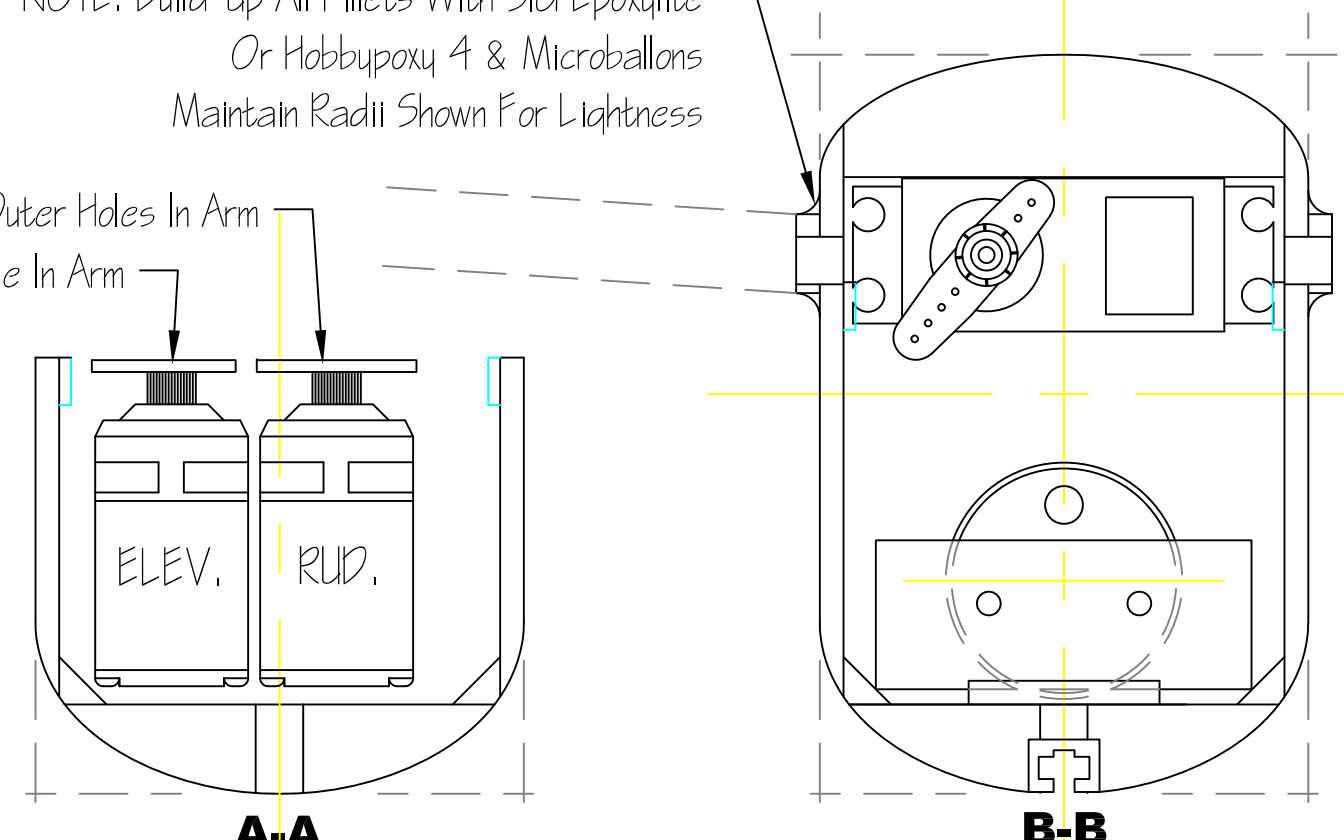
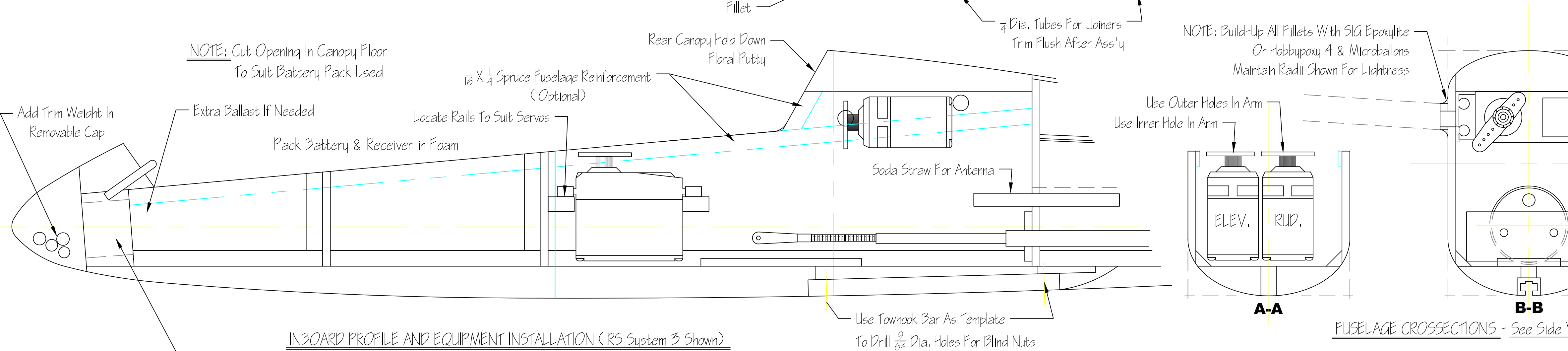
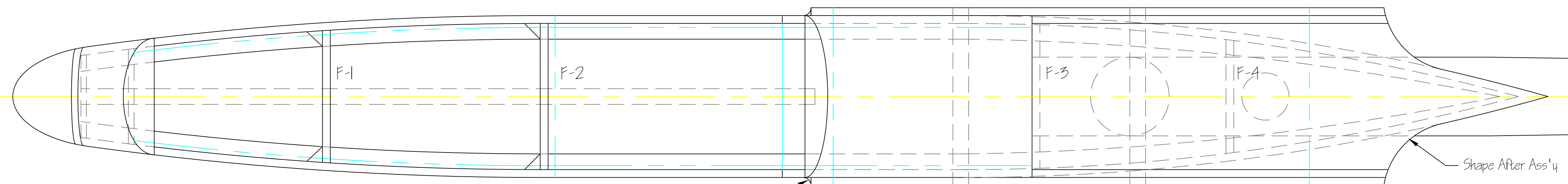
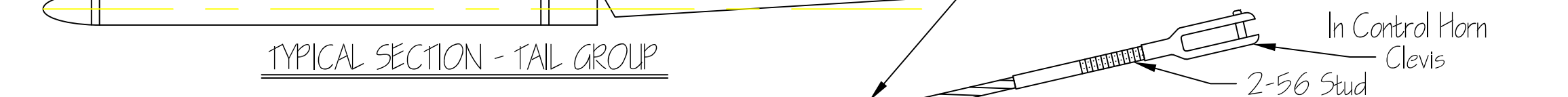


FULL SPAN HINGE DETAILS (SPOILERS SIMILAR)



ELEVON DEFLECTION
 RUDDER COMMAND: ± 3/4" From Neutral
 ELEVATOR COMMAND: ± 1/2" From Neutral
 Measured at Inboard T.E. - Full Stick movement with neutral trim levers

STAB CENTER JOINT DETAIL AFTER JOINING



GRAND ESPRIT

Revised and CAD Conversion REV. - A 9/20/2020
 by Alan Sinclair - wizardoflight@comcast.net

NOTE: IMPROVED PUSHROD ASSEMBLY Suggested By E. Pell & J. Simone

