

MOTOR SIDE & DOWN THRUST 0°

RUDDER TRAVEL 25° RIGHT & LEFT

FLAP TORQUE TUBE 1/4 ALUMINUM  
3" WIDE FIBERGLASS REINFORCING TAPE ON BOTTOM OF FUSELAGE

ELEVATOR TRIM BELLCRANK

NYLON BUSHING

ELEVATOR CONTROL HORN

1/4 ALUM TUBING

FIBERGLASS ARROWSHAFT PUSHROD

3/16 PLYWOOD

LOWER COWLING PATTERN CUT FROM 010 ALUMINUM

SCALE PROP

TWISTED 1/4 ALUM

CLOCKWISE ROTATION

TOP WING ROOT FAIRING 1/32 BALS

3/32 PLY RIB

AILERON PUSHROD CONNECT WITH DUBRO BALL JOINTS

3/32" SHEET

CUT FROM 1/4 SHEET

1/2 BALS

FIN & RUDDER SPAR

1/8 SHEET

1/8 PLY

DUBRO KWIK-LINK

ALUM. TRIM TAB

1/4 ALUM. TUBING

NYLON BUSHING

ALUM TUBING

1/2 SPRUCE

5/32 ALUM TUBING

3/16 MUSIC WIRE

THIS SECTION OF KEEL REMOVED

BLUE  
WHITE  
RED

1° POSITIVE INCIDENCE

GUSSET F-9

CARVE TAILCONE FROM SOFT BALS

BLSA PLY

ELEVATOR TRAVEL 25° UP & DOWN

ELEVATOR TRIM TAB CONTROL. FISH LINE. RUN THROUGH SMALL NYROD EPOXY TO INNER WALL OF FUSELAGE

REMOVE

TOP FLITE AILERON BELLCRANK

DRILL 1/4

WHITE LIGHT

1 FROM 3/32 PLY ONE PIECE

1 FROM 1/8 BALS TWO PIECE

3/32 MUSIC WIRE TAIL WHEEL STRUT

KRAFT MT.

KRAFT 12 OZ FUEL TANK

Chipmunk

SECTION F-2 TO F-5 COVERED WITH 1/64 PLYWOOD BEFORE BALS PLANKING

SEAT POSITION

NYLON PUSHROD GUIDE

KEEL 1/4" M BALS

1/4 SQUARE "H" BALS PUSHRODS

BALS BLOCK FAIRING

SCALE FUEL TANK VENT (WING HOLD DOWN BOLT)

PLANK TO HERE

KPS-14 SERVO

HATCH FOR AILERON SERVO

WINGS 2° POSITIVE INCIDENCE

FUSELAGE PLANKED WITH 1/8 SOFT BALS

BUILD UP SCALE LG WITH DOWEL AND TUBING OVER 3/16 MUSIC WIRE

INSTRUMENT PANEL

1/8 "H" BALS

1/8 BALS

1/8 PLY

F-5

F-6

F-7

F-8

COOLING BAFFLE

RADIO ACCESS HATCH

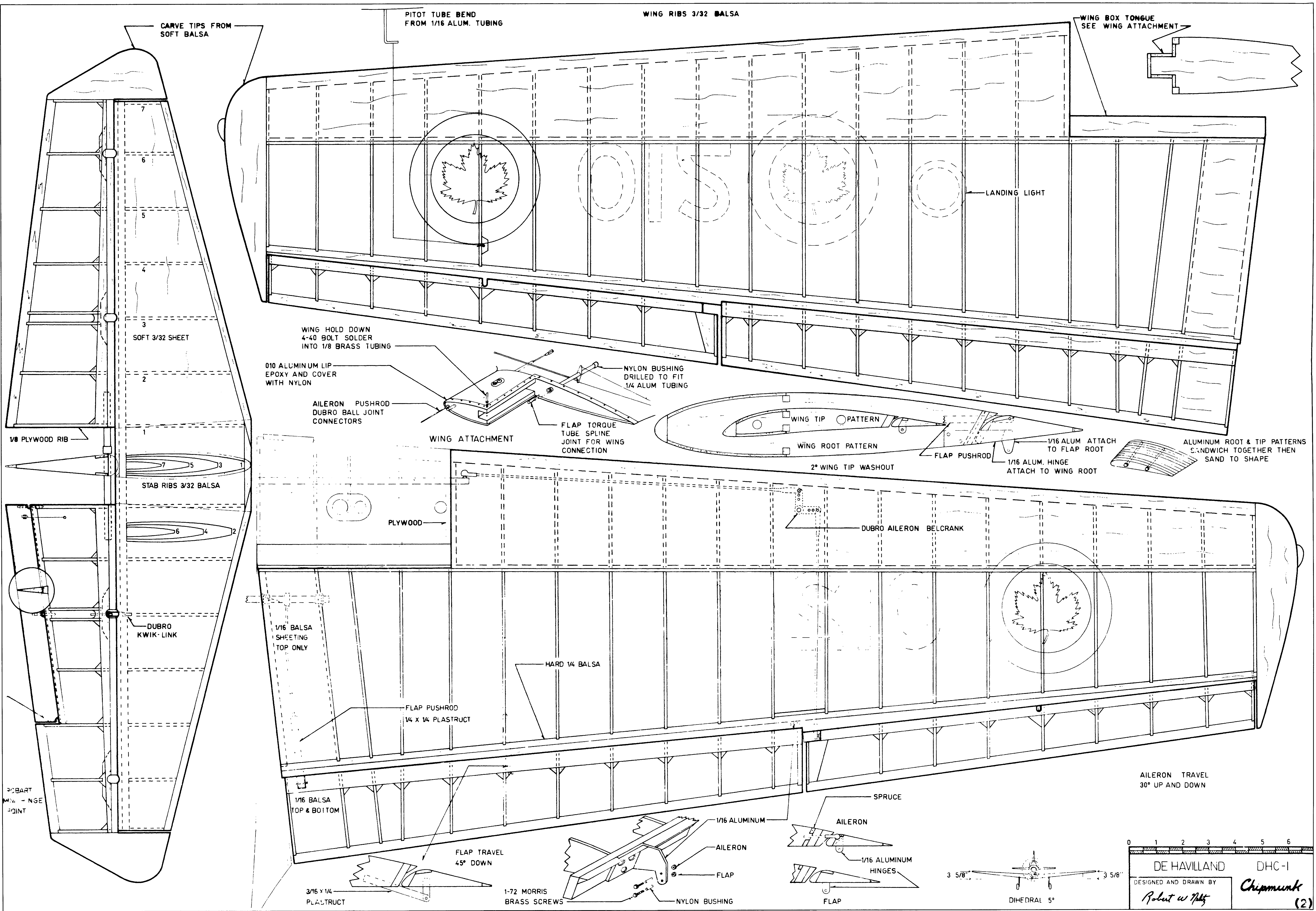
RADIO SWITCH

SECTION F-1 TO COWL LINE MADE FROM FIBERGLASS

3 1/2 ROBERT WHEELS

SPRING

THREADED 2-56

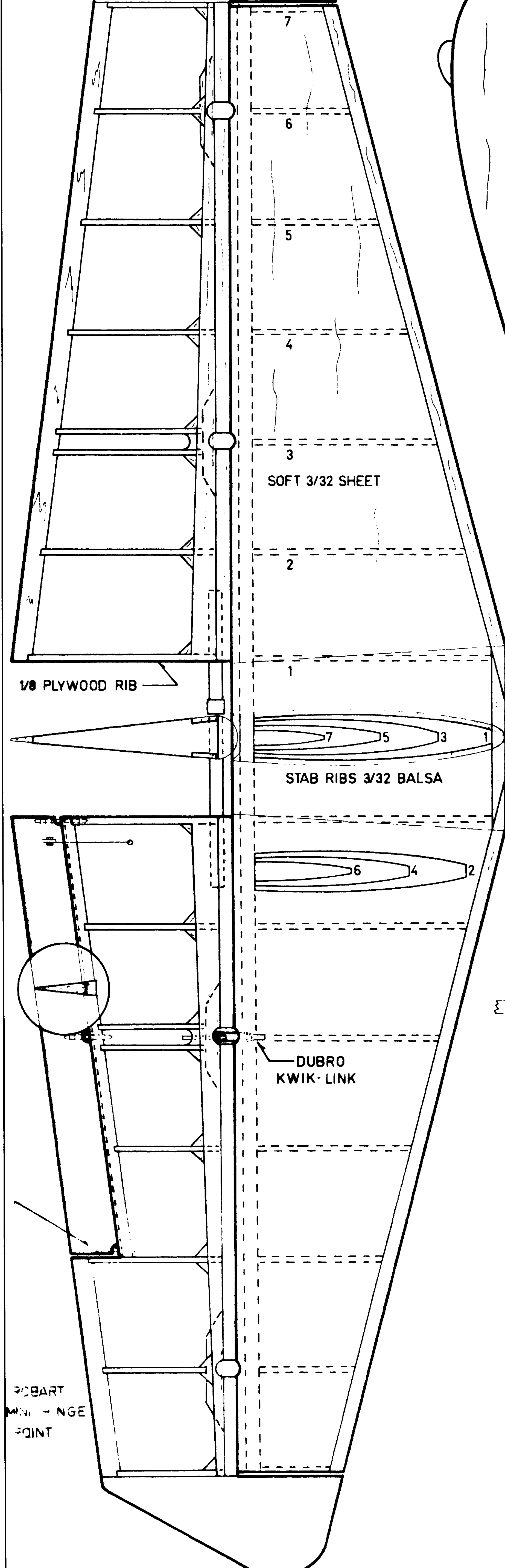


CARVE TIPS FROM SOFT BALS

PITOT TUBE BEND FROM 1/16 ALUM. TUBING

WING RIBS 3/32 Balsa

WING BOX TONGUE SEE WING ATTACHMENT



SOFT 3/32 SHEET

WING HOLD DOWN 4-40 BOLT SOLDER INTO 1/8 BRASS TUBING

010 ALUMINUM LIP EPOXY AND COVER WITH NYLON

NYLON BUSHING DRILLED TO FIT 1/4 ALUM TUBING

AILERON PUSHROD DUBRO BALL JOINT CONNECTORS

FLAP TORQUE TUBE SPLINE JOINT FOR WING CONNECTION

WING ATTACHMENT

WING TIP PATTERN

WING ROOT PATTERN

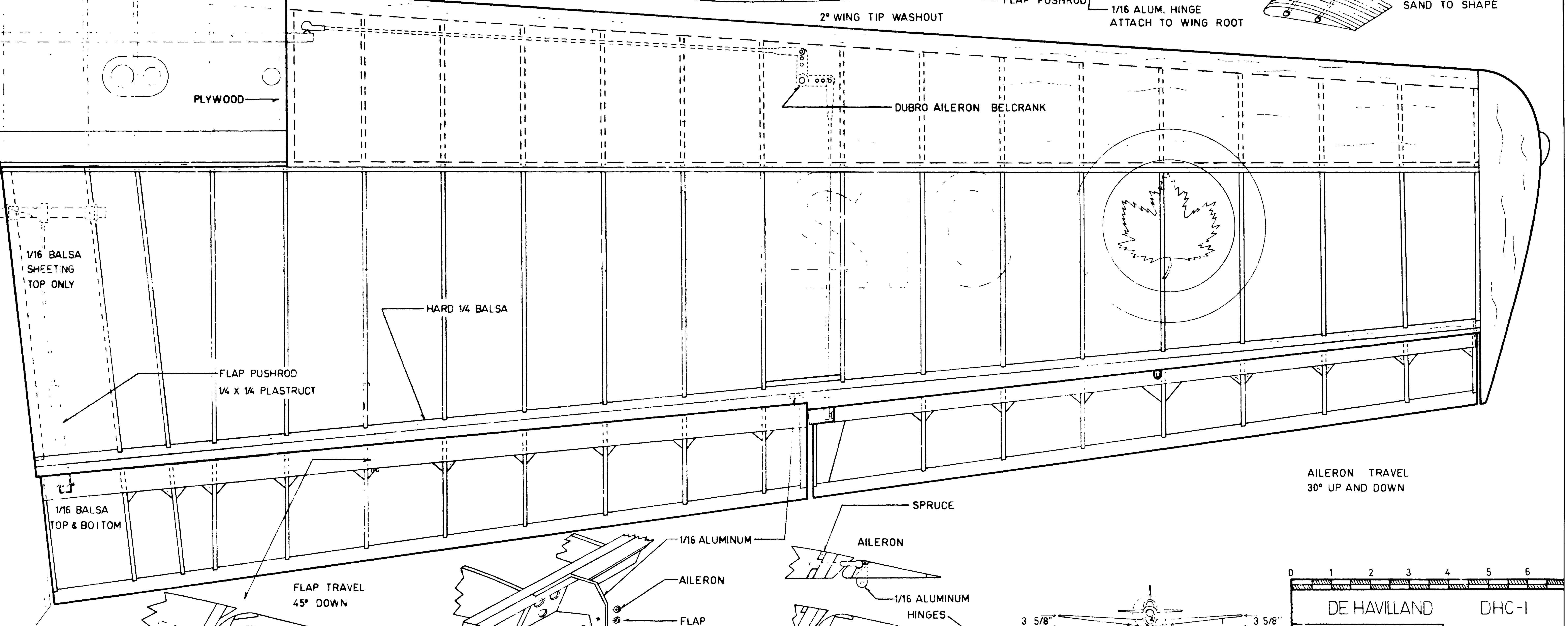
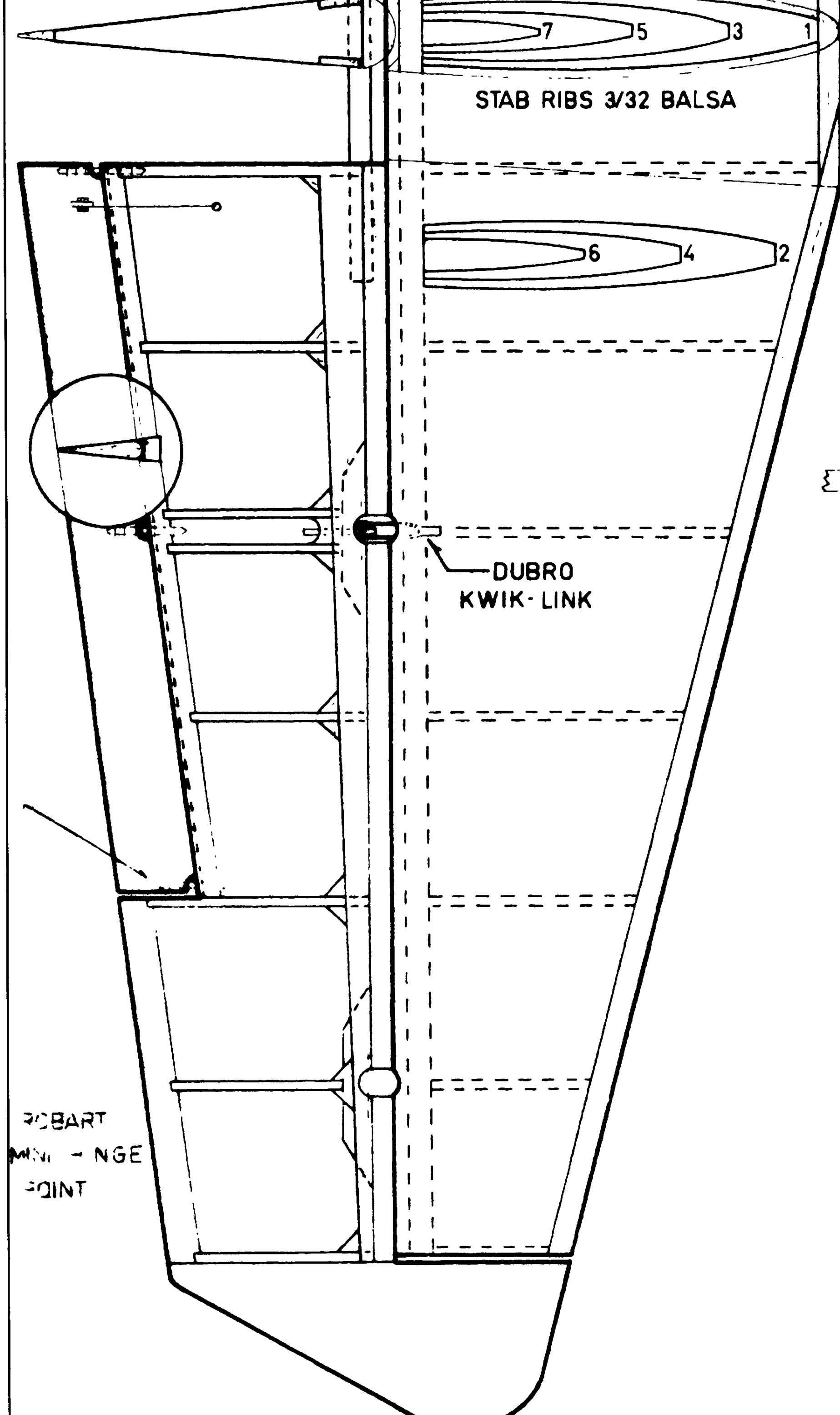
1/16 ALUM ATTACH TO FLAP ROOT

ALUMINUM ROOT & TIP PATTERNS SANDWICH TOGETHER THEN SAND TO SHAPE

FLAP PUSHROD

1/16 ALUM. HINGE ATTACH TO WING ROOT

2° WING TIP WASHOUT



AILERON TRAVEL 30° UP AND DOWN

3/16 x 1/4 PLASTRUCT

1-72 MORRIS BRASS SCREWS

3 5/8" DIHEDRAL 5°

0 1 2 3 4 5 6

DE HAVILLAND DHC-1

DESIGNED AND DRAWN BY Robert W. Hilly

Chipmunk (2)